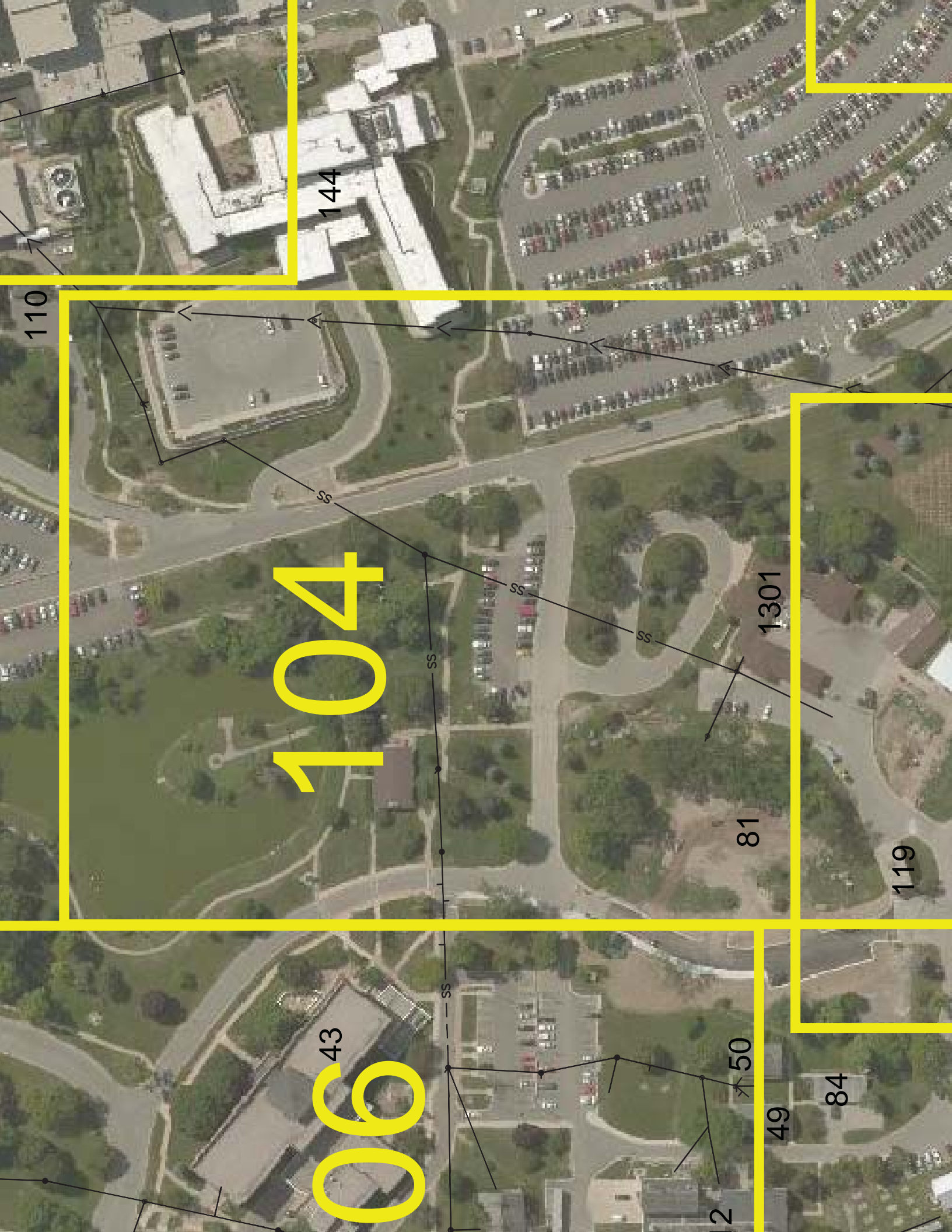


<p> E WILL RESUME WITHIN CONTROL DEVICES, AS MAY BE DURING UTILITY CONSTRUCTION. GRADED, AND STABILIZED UTILITY INSTALLATION. CONTROL DEVICES TO BE INTENDED. AFTER CONTRACTOR SHALL REMOVE ALL HAS BEEN ESTABLISHED REMOVAL OF THE REMAINING ARE ESTABLISHED. INSPECTED EVERY SEVEN (7) CE THAT EXCEEDS EFFECTIVE DEVICES SHALL BE </p>	<p> DIA DIFF DIM DIP DIST DOM DOT DS DW EA EC EG EJ ELEV EP EPA ESMT EQ EQL SP EQUIP EQUIV ES ESMT EW EX EXP F/F FES FFE FHA FNC FOC FPM FPS FPW FSP FT G GA GAL GEN GPD GT GV GUT </p>	<p> DROP INLET DIAMETER DIFFERENCE OR DIFFERENTIAL DIMENSION DUCTILE IRON PIPE DISTANCE DOMESTIC DEPARTMENT OF TRANSPORTATION DOWNSPOUT DOMESTIC WATER EACH EDGE OF CURB EXISTING GRADE EXPANSION JOINT ELEVATION EDGE OF PAVEMENT (PAVING) ENVIRONMENTAL PROTECTION AGENCY EASEMENT EQUAL EQUALLY SPACED EQUIPMENT EQUIVALENT EDGE OF SHOULDER EASEMENT END WALL EXISTING EXPANSION FACE TO FACE FLARED END SECTION FINISH FLOOR ELEVATION FIRE HYDRANT ASSEMBLY FENCE FACE OF CURB FEET PER MINUTE FEET PER SECOND FIRE PROTECTION WATER SUPPLY FIRE STANDPIPE FEET OR FOOT NATURAL GAS OR GAS LINE GAGE GALLON GENERATOR GALLONS PER DAY GREASE TRAP GATE VALVE GUTTER </p>	<p> PRESS POUNDS PIPE S POINT (C POLYVIN RADIUS REINFO REINFO REINFO ROAD C REDUCE RIM EL REQUIR REQUEST RIGHT (C RAILROAD RIGHT SANITARI SPLASH SCHEDULE STORM SADDLE SECTION SEPARATE SQUARE SINGLE SHOULDER SHUT C SPECIFI SQUARE SANITARI STATION STANDAR STEAM SURFAC SURVEY SIDEWALK SQUARE TELEPH TEMPO TEST B TRENCH TOP EL TEMPO THICKNE TOP OF TOP OF TOPOGR </p>

	12	24	43	0	REPLACE		12	CONCRETE PIPE EMPITIES
	24	327.1	0	REPLACE				
	24	54.2	0	LINE				
	24	128.6	0	REPLACE				
	24	97.6	0	LINE				PIPE CHANGE
	6	111.5	0	REPLACE				
	4	77	0	REPLACE				
	8	135.2	0	LINE				
	6	93.7	2	REPLACE				
	6	36.3	0	REPLACE				
	6	84	0	REPLACE				
	6	99.6	0	REPLACE				
	12 & 8	231.5	3	REPLACE				PIPE HAS MULTIPLE HOLES IN IT / ONE HOLE IN THE PIPE
	12 & 8	173.8	0	REPLACE				
	12	88.3	0	LINE				PIPE IS QUARTERED
	12	230	0	LINE				
	12	249.3	0	LINE				
	8	357	0	LINE				
	6	75.6	0	NO ACTION				
	12	208.8	0	CAP AND ABANDON				
	12	72	0	N/A				
	8	93.8	0	LINE				
	8 & 6	34.9	0	REPLACE				PIPE SEGMENT CHANGES DIAMETER FROM 12" TO 10"
	12	94.8	0	LINE				
	12	190	0	NO ACTION				
	6	26.9	0	NO ACTION				
E	6	235.8	2	REPLACE				
	8	146.2	1	LINE				
	8	135.1	0	NO ACTION				
	8	108.9	0	LINE				VERIFY IF THIS IS THE SAME PIPE
	8	-	0	ABANDON				
	8	215	0	N/A				
	8	196	0	N/A				
	8	186.5	0	LINE				REMOVED
	6	69.9	0	ABANDON				PIPE SEGMENT IS DRY / VERIFIED
	8 & 10	74.1	0	LINE				PIPE DIA. CHANGES TO 10"
	8	151.9	0	LINE				THIS IS THE SAME PIPE
	8	244.2	0	LINE				THE PIPE IS QUARTERED
	8	22.6	0	LINE				THIS IS THE SAME PIPE
	8	210.9	0	LINE				THIS IS THE SAME PIPE
	8 & 10	234.8	0	LINE				PIPE IS QUARTERED IN MULTIPLE PLACES
	8	57.2	0	NO ACTION				

VCP	6	43.4	REPLACE	LATERAL TO BUILDING 1 / LATERAL ORIGINAL
VCP	6	49.6	ABANDON	LATE
C / VCP	6	50.7	NO ACTION	
VCP	6	1	ABANDON	LATERAL HAS A LARGE OFFSET ON
VCP	6	7.9	ABANDON	LATERAL IS COLLAPSED 8 FT F
VCP	6	50.9	NO ACTION	LATERAL
VCP	4	13.1	ABANDON	LATERAL TO BUILDING 105 / LATERAL PLUGGED WITH
VCP	4	0.9	ABANDON	LAT
VCP	4	4.4	ABANDON	LATERAL IS FULL OF DEEE
VCP	6	6.6	ABANDON	VERIFY LA
VCP	6	16.4	REHABILITATION	
C / VCP	4	106.8	NO ACTION	
CI	8	14.3	LINE	
VCP	6	51.1	REHABILITATION	LATERAL
VCP	6	18.5	REHABILITATION	LATERAL TO BUILDING 49 / RC
VCP	6	5.1	REHABILITATION	LATERAL TO B
VCP	6 & 4	24.2	REPLACE	LATERAL TO BUILDING
VCP	6	38.9	ABANDON	LATERAL IS BROKEN @ 38.9 FT FRM MH 7048 / MULTIPLE SPOT REPAIR L
PVC	12 & 8	4.9	NO ACTION	LATERAL TO BUILDING 43
VCP	6	33.6	REPLACE	LATERAL TO BUILDING 45 / S
CI	6	40.6	ABANDON	LATERAL TO BUILDING
VCP	6	30.8	LINE	LATERAL
PVC	4	17.1	NO ACTION	
PVC	6	113	NO ACTION	
VCP	8	1.1	ABANDON	LATERAL TO GREAS
PVC	6	39.4	NO ACTION	
NCRETE	8	13.3	REPLACE	LATERAL TO BU
NCRETE	6	25.4	ABANDON	LATERAL TO BUILDING
VCP	10	1.5	ABANDON	LATERAL TO GREAS
PVC	6	69.7	LINE	
VCP	6	23.5	NO ACTION	
/ CI / VCP	4	45	LINE	
PVC	6	2.4	ABANDON	LATERAL FULL OF DEBRIS @ 2.4 FT
CI	6	48.9	LINE	
NCRETE	8	4.8	LINE	LATERAL TO BUILD
PVC	4	38.8	NO ACTION	
VCP	8	58.4	REHABILITATION	RR
PVC	4	22.8	REPLACE	LATERAL TO ELECTRIC BOX / REROUTE LATERAL TO
VCP	6	92.4	LINE	LATERAL TO BUILDING 4 / PIPE QUARTERED AND DEFORMED @ 18.1 FT FROM
P / CONCRETE	6	98.6	NO ACTION	
CI	6	33.7	LINE	

SHOP RD.	GRASS	36	BRICK	12.17	5	REPLACE
SHOP RD.	GRASS	36	BRICK	14.8	8	REPLACE
SHOP RD.	ASPHALT	42	BLOCK	8.3	3	NO ACTION
SHOP RD.	GRASS	48	PRECAST	10.69	2	-
SHOP RD.	GRASS	36	BRICK	11.4	5	REPLACE
-	-	-	-	-	-	-
SHOP RD.	GRASS	42	BRICK	13.51	3	REPLACE
SHOP RD.	ASPHALT	42	BRICK	11.97	3	REPLACE
SHOP RD.	GRASS	40	BRICK	6.5	5	REPLACE
EMENT	GRASS	48	PRECAST	7.31	2	NO ACTION
EMENT	GRASS	48	PRECAST	16.86	3	NO ACTION
EMENT	GRASS	48	PRECAST	7.84	3	NO ACTION
EMENT	GRASS	36	BRICK	9.35	4	REPLACE
EMENT	GRASS	42	BRICK	6.85	3	REPLACE
EMENT	ASPHALT	42	BRICK	7.05	2	REPLACE
WER DR.	ASPHALT	38	BRICK	6.98	5	REPLACE
WER DR.	GRASS	36	BRICK	9.38	6	REPLACE
ES BLVD.	GRASS	32	BRICK	5.28	2	REPLACE
EMENT	GRASS	48	BRICK	6.62	3	REPLACE
EMENT	GRASS	30	PRECAST & BLOCK	13.12	3	LINE
ES BLVD.	ASPHALT	48	PRECAST	6	4	NO ACTION
EMENT	GRASS	48	PRECAST	8.39	2	NO ACTION
EMENT	ASPHALT	30	BRICK	12.23	6	REPLACE
EMENT	ASPHALT	40	BRICK	9.21	7	REPLACE
EMENT	ASPHALT	36	BRICK	6.52	2	REPLACE
EMENT	GRASS	36	BRICK	15.12	5	REPLACE
EMENT	GRASS	22	BRICK	14.92	6	REPLACE
EMENT	GRASS	48	BRICK	6.72	3	REPLACE
EMENT	GRASS	36	BRICK	6.62	2	REPLACE
EMENT	GRASS	48	PRECAST	9.45	2	-
EMENT	GRASS	48	PRECAST	10.36	2	-
EMENT	GRASS	36	BRICK	9.31	3	REPLACE
EMENT	GRASS	48	PRECAST	6.7	2	-
ES BLVD.	GRASS	-	-	-	-	-
ES BLVD.	GRASS	42	PRECAST	8.69	3	NO ACTION
ROW CIR.	GRASS	48	PRECAST	9.41	2	NO ACTION
ROW CIR.	ASPHALT	36	BRICK	9.64	3	REPLACE
RON CT.	GRASS	-	-	-	1	-
ROW CIR.	GRASS	32	BRICK	6.82	3	REPLACE
SHOP RD.	GRASS	38	BRICK	8.46	2	REPLACE



110

144

104

1301

81

119

43

06

50

49

84

12



S WASHINGTON ST

SS-7010
RE=663.32
IE=644.26 (N)
IE=644.22 (E)
IE=657.59 (NW)

REMOVE
WITH 12"
(SEE S

LINE SEWER
311 LF OF
12" CIPP