

CHAIN LINK FENCE

EXISTING/PROPOSED  
GRADE

TELEPHONE LINE

APPROX. LOCATION AND DEPTH  
CONTRACTOR TO FIELD VERIFY

GAS LINE

APPROX. LOCATION AND DEPTH  
CONTRACTOR TO FIELD VERIFY

ELECTRICAL LINE

APPROX. LOCATION AND DEPTH  
CONTRACTOR TO FIELD VERIFY

152 LF OF 8" PVC

SS-7036 MANHOLE  
RE=636.77  
IE=631.77 (E)  
IE=631.77 (W)

EXISTING/PROPOSED  
GRADE

WATER LINE  
APPROX. LOCATION AND DEPTH  
CONTRACTOR TO FIELD VERIFY

ELECTRIC LINE  
APPROX. LOCATION AND DEPTH  
CONTRACTOR TO FIELD VERIFY

TELEPHONE LINE

.47%

EX. 15" VCP

635

630

625

620

630

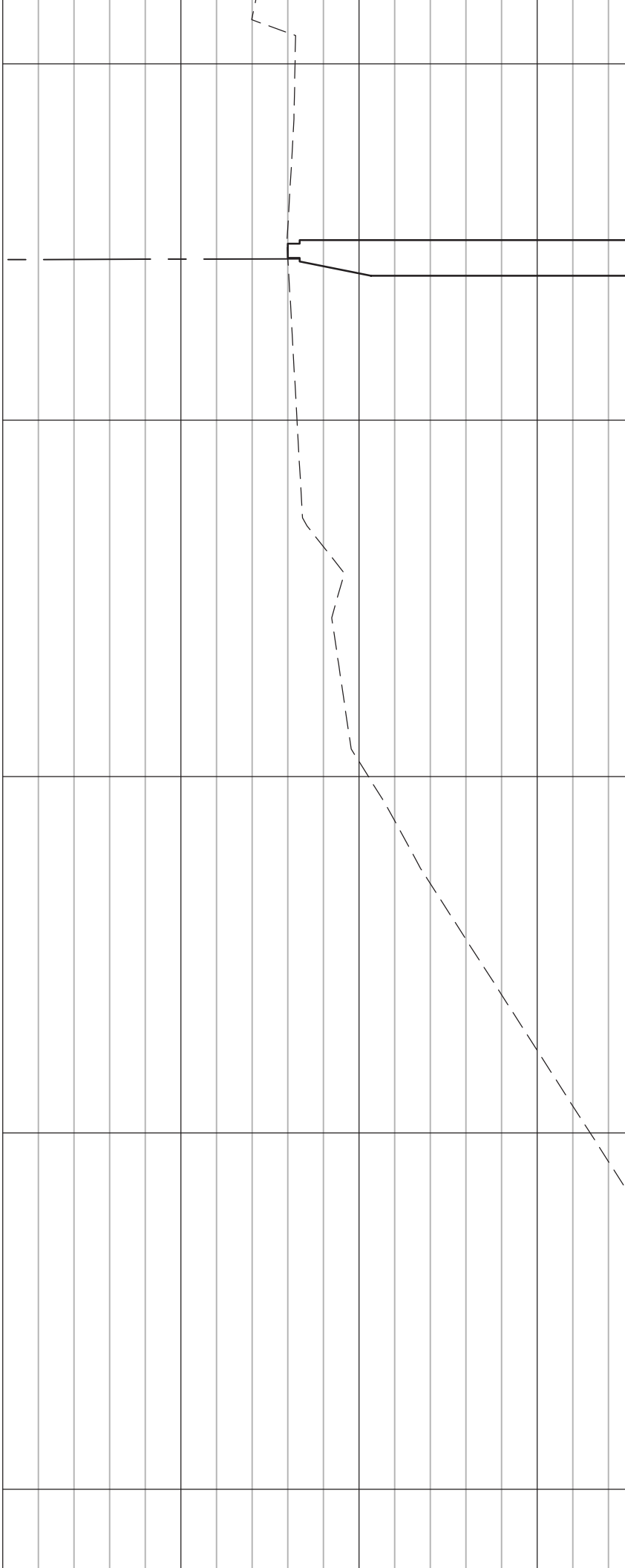
625

620

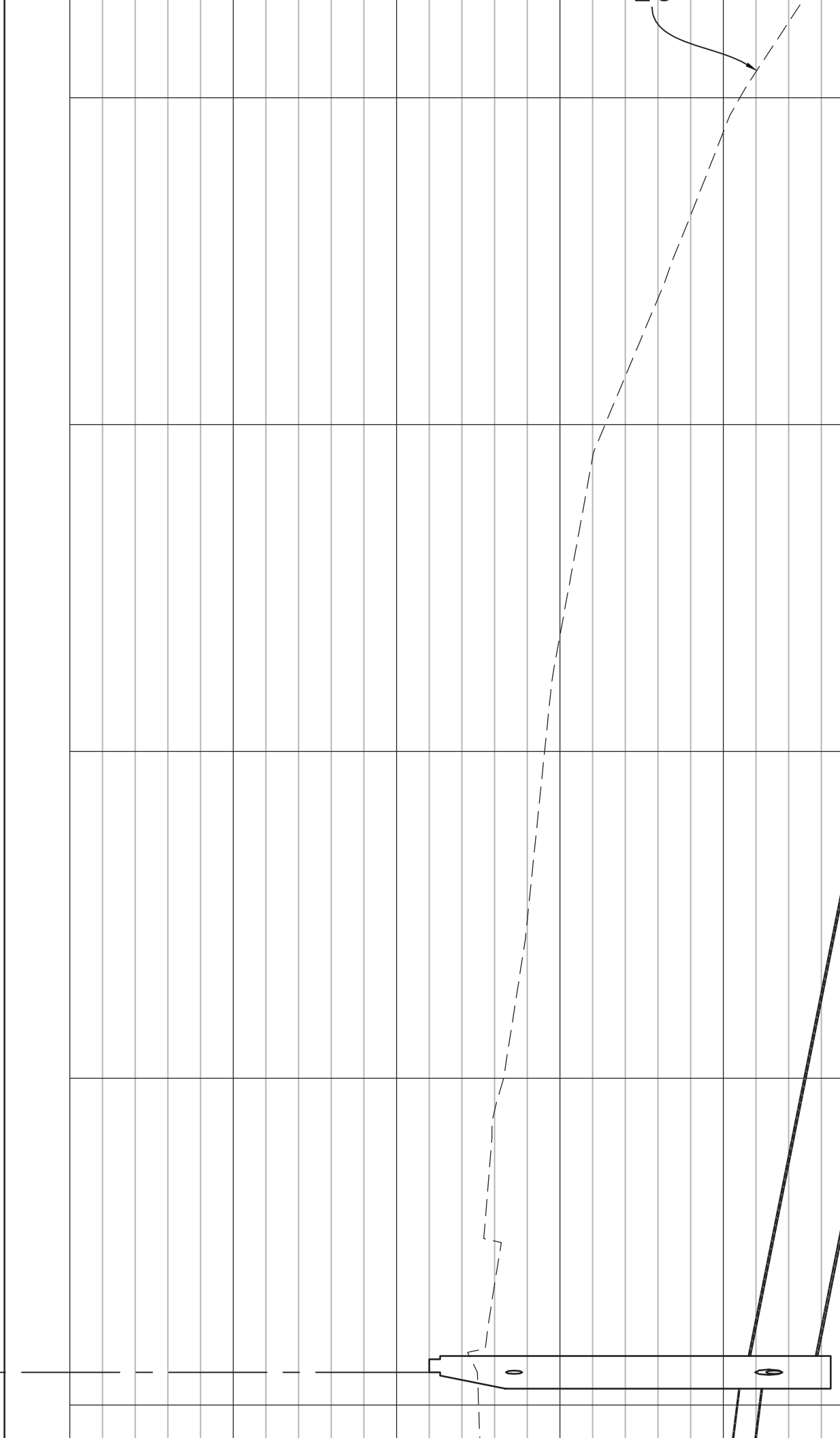
SS-7042 MANHOLE  
RE=627.08  
IE=615.13 (E)  
IE=615.38 (W)  
IE=622.83 (S)

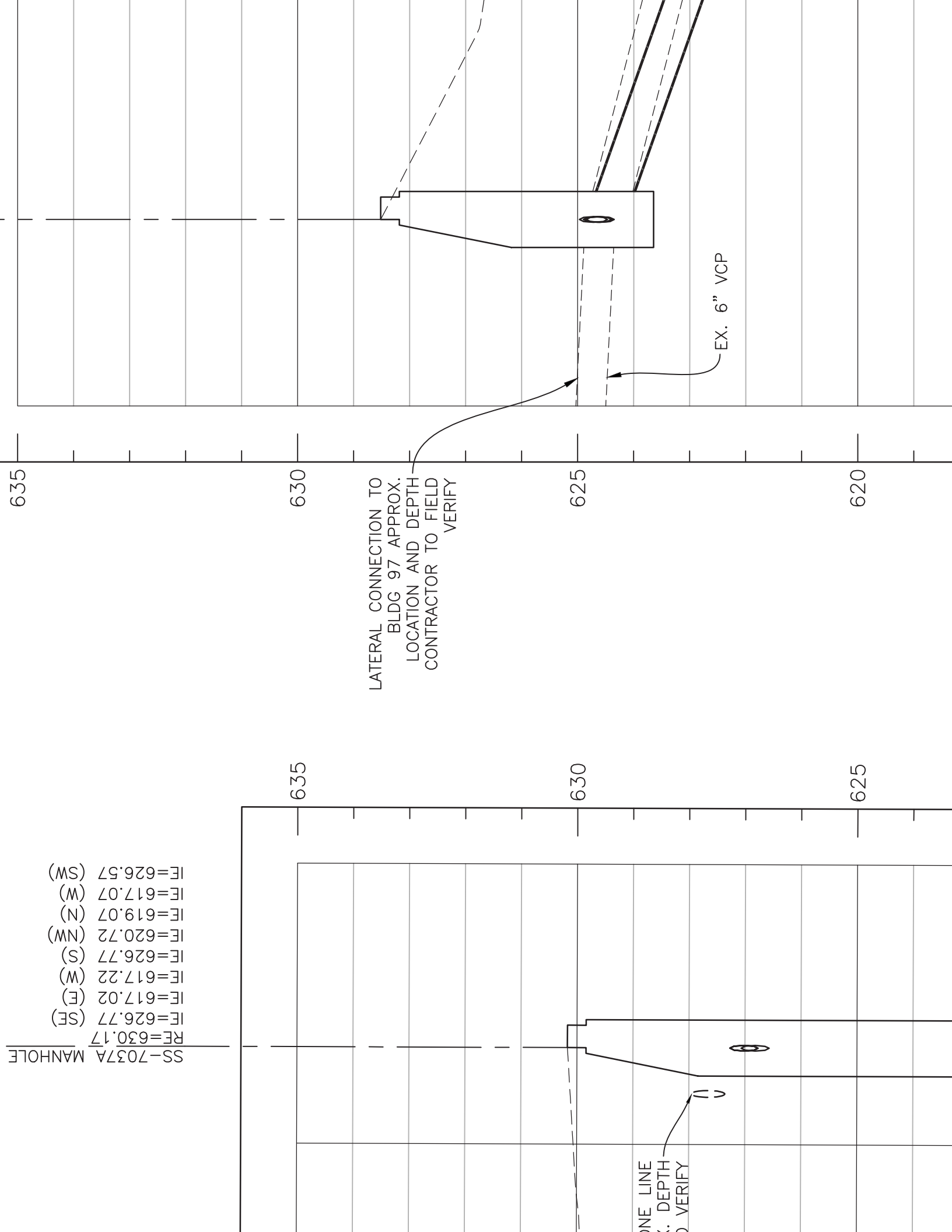
SS-7203 MANHOLE  
RF=637.00  
IE=617.93 (S)  
IE=617.93 (N)

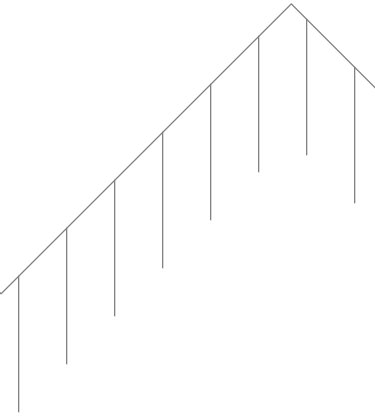
IE=618.91 (W)  
IE=618.91 (NE)  
IE=620.56 (SE)

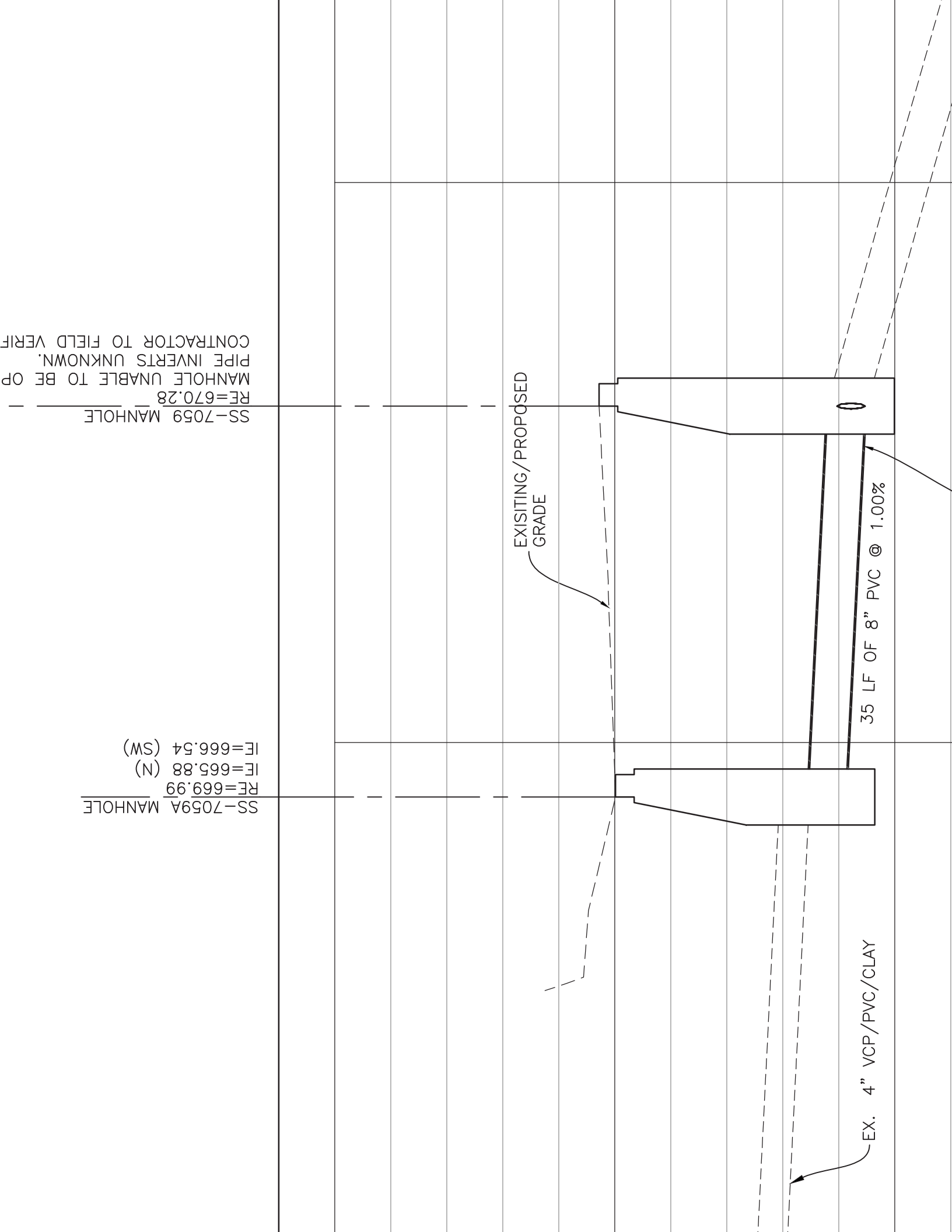


SS-7041 MA  
RE=624.00  
IE=613.32 (V)  
IE=612.27 (N)  
IE=621.15 (V)  
IE=613.19 (S)  
IE=613.19 (S)  
IE=613.77 (S)





[illegible]



35 LF OF 8" PVC @ 1.00%

EXISTING/PROPOSED  
GRADE

EX. 4" VCP/PVC/CLAY

SS-7059A MANHOLE

RE=669.99  
IE=665.88 (N)  
IE=666.54 (SW)

SS-7059 MANHOLE

RE=670.28

MANHOLE UNABLE TO BE OPENED.  
PIPE INVERTS UNKNOWN.  
CONTRACTOR TO FIELD VERIFY