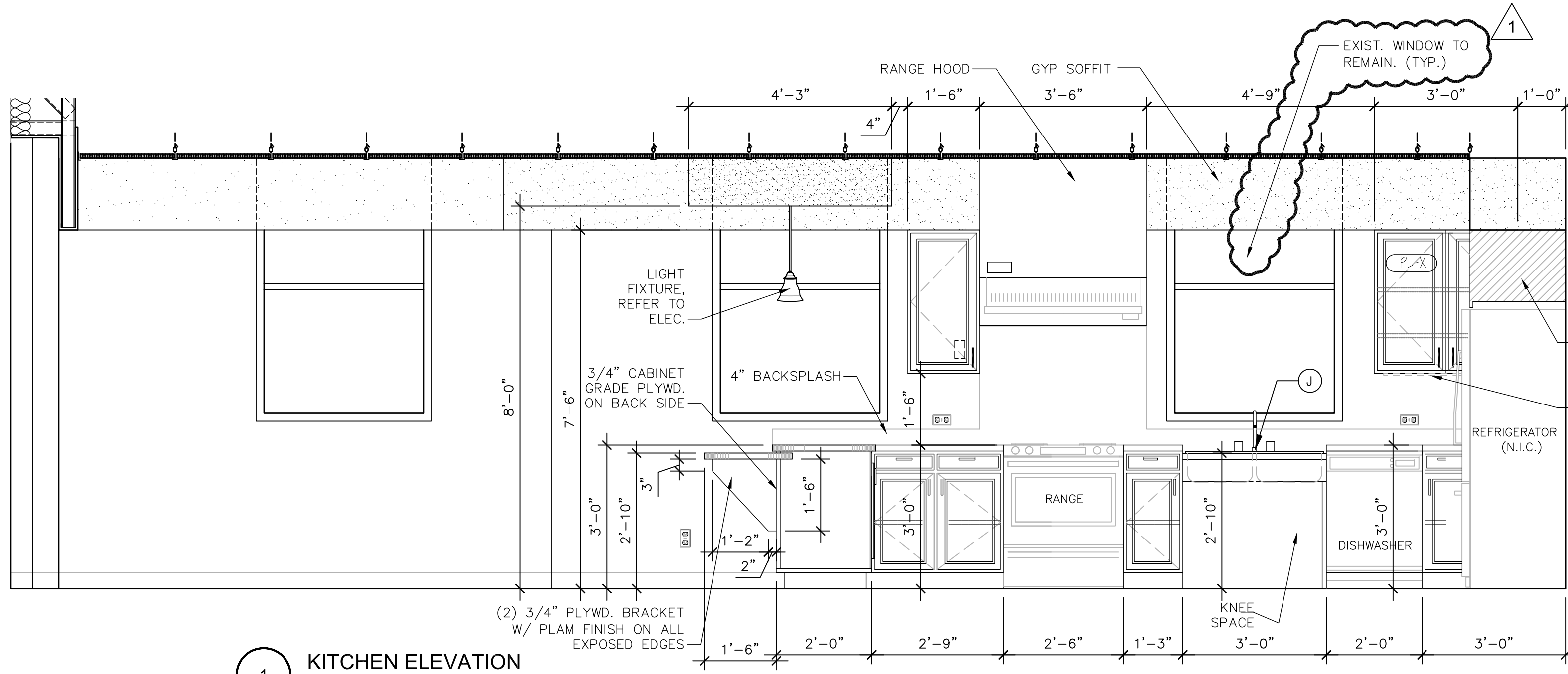
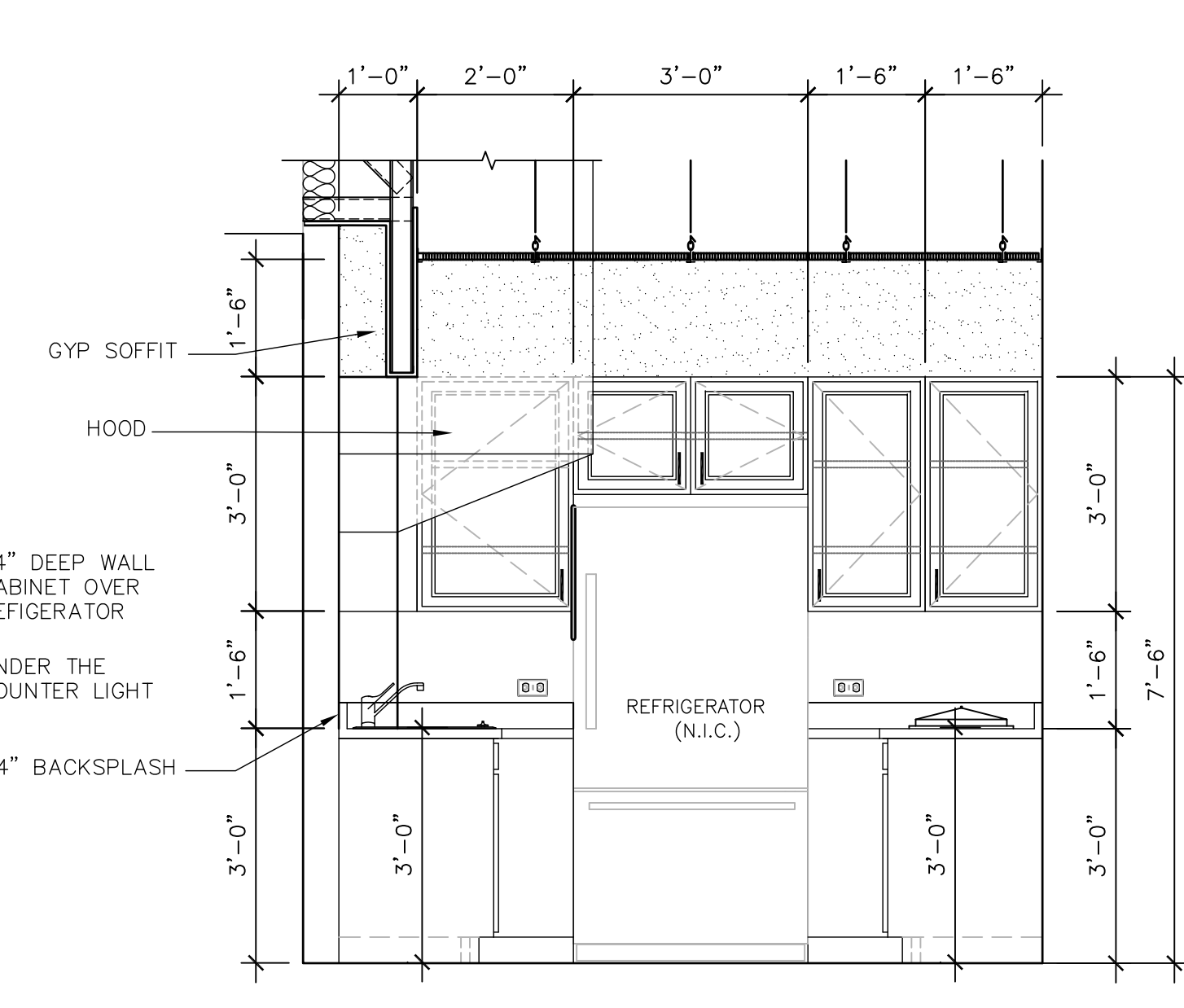


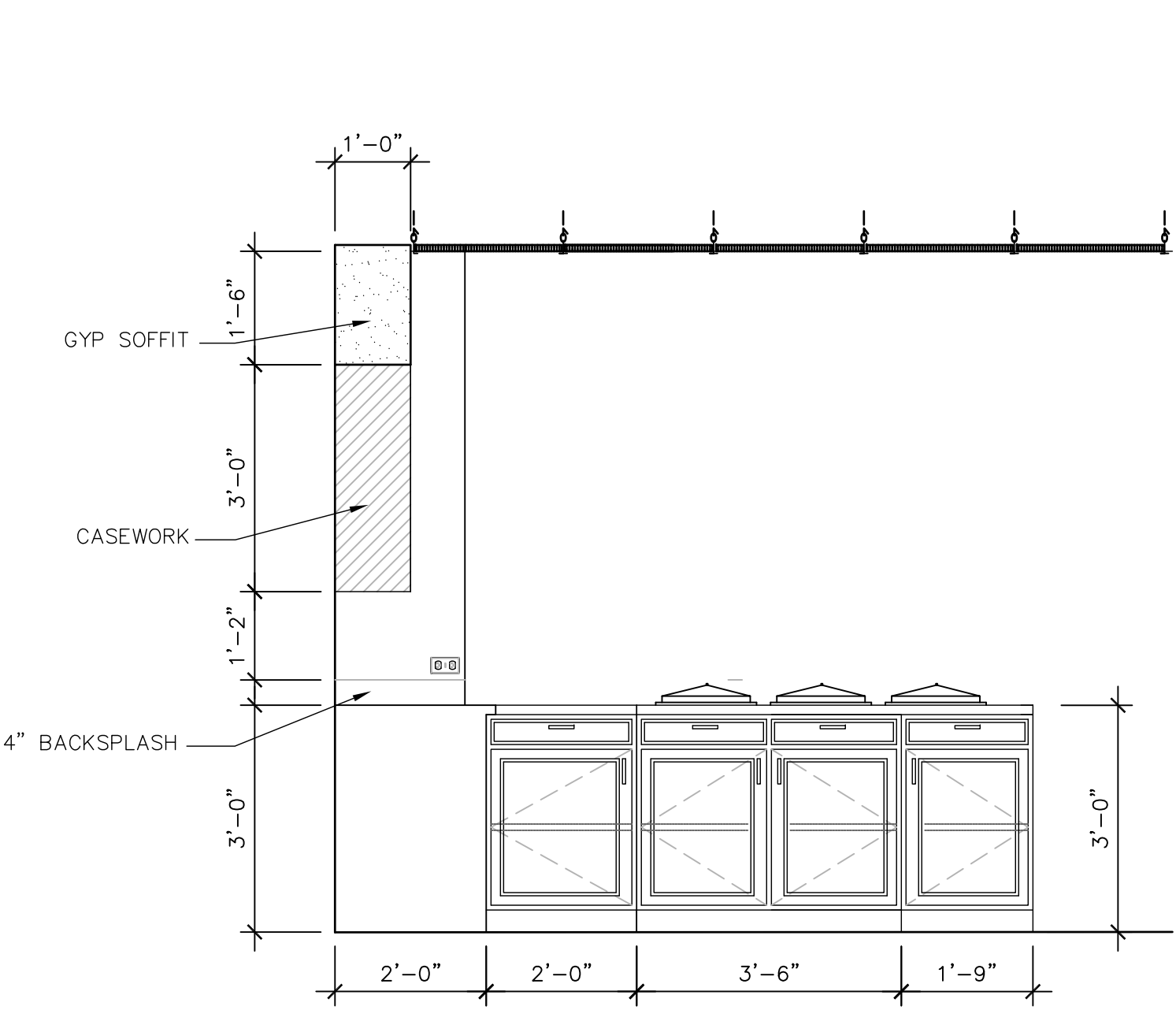
one-eighth inch = one foot  
one-quarter inch = one foot  
three-eighths inch = one foot  
one-half inch = one foot  
three-quarters inch = one foot  
one inch = one foot  
one and one-half inch = one foot  
two inches = one foot  
three inches = one foot



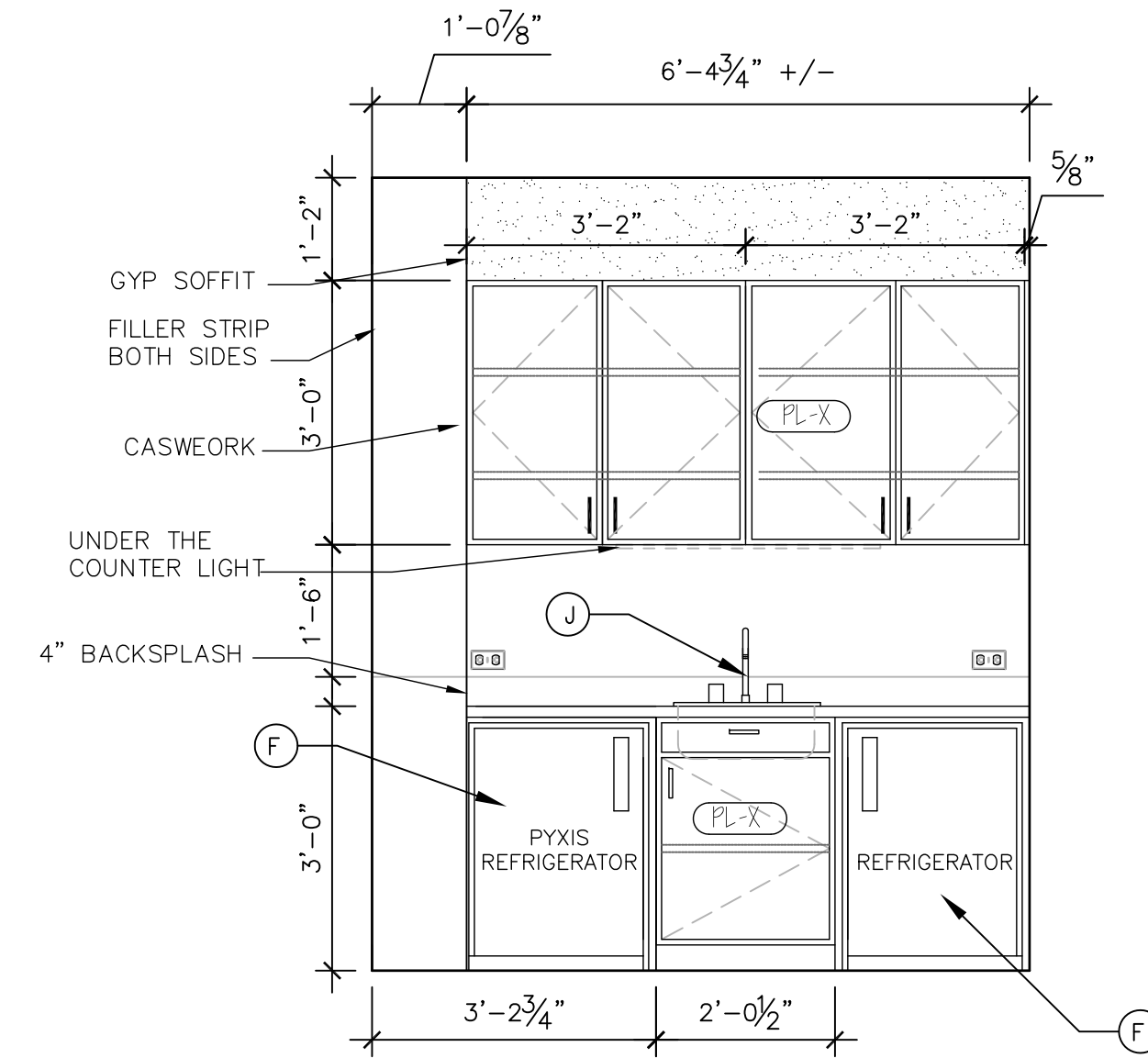
1 KITCHEN ELEVATION  
1/2" = 1'-0"



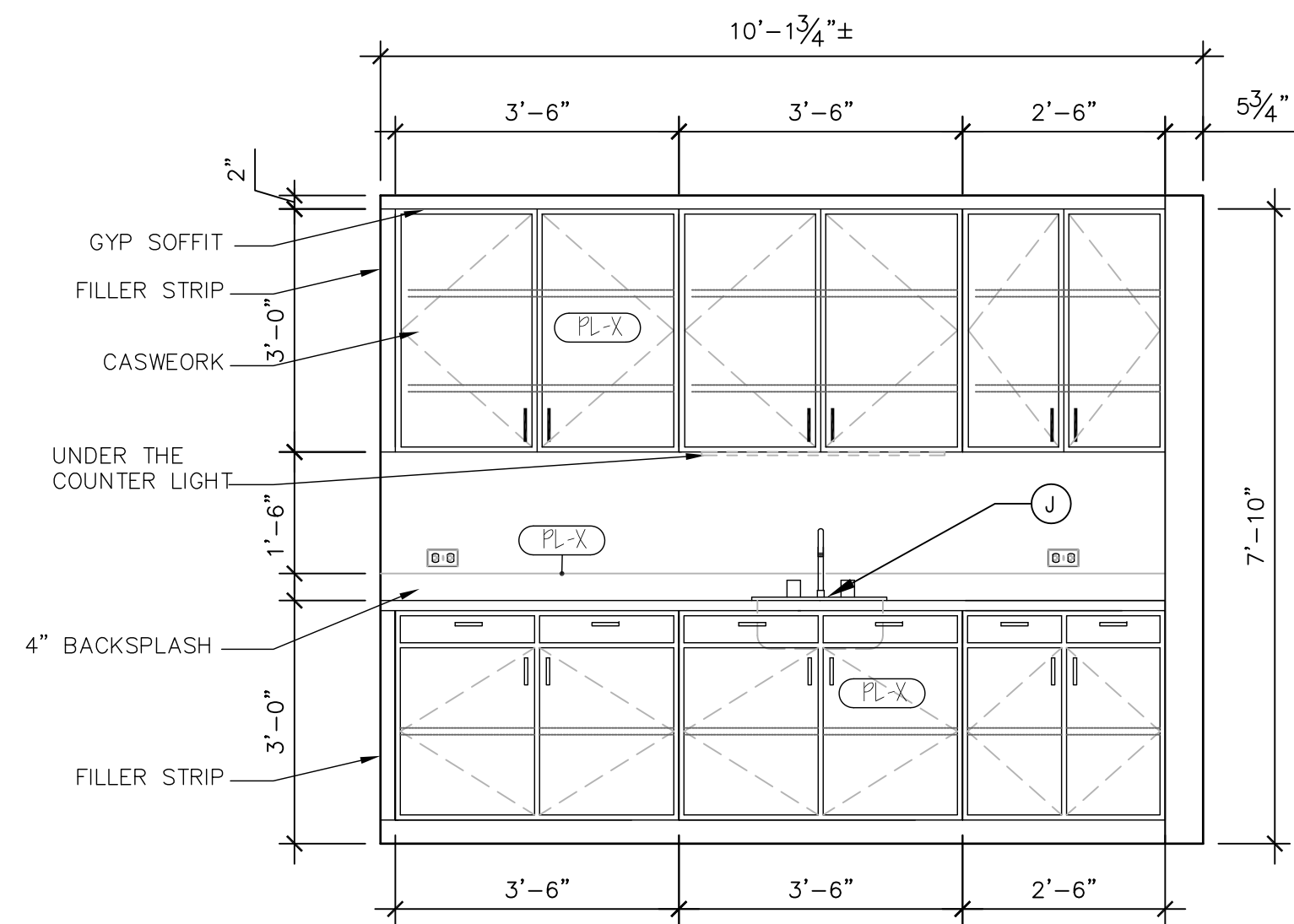
2 KITCHEN ELEVATION  
1/2" = 1'-0"



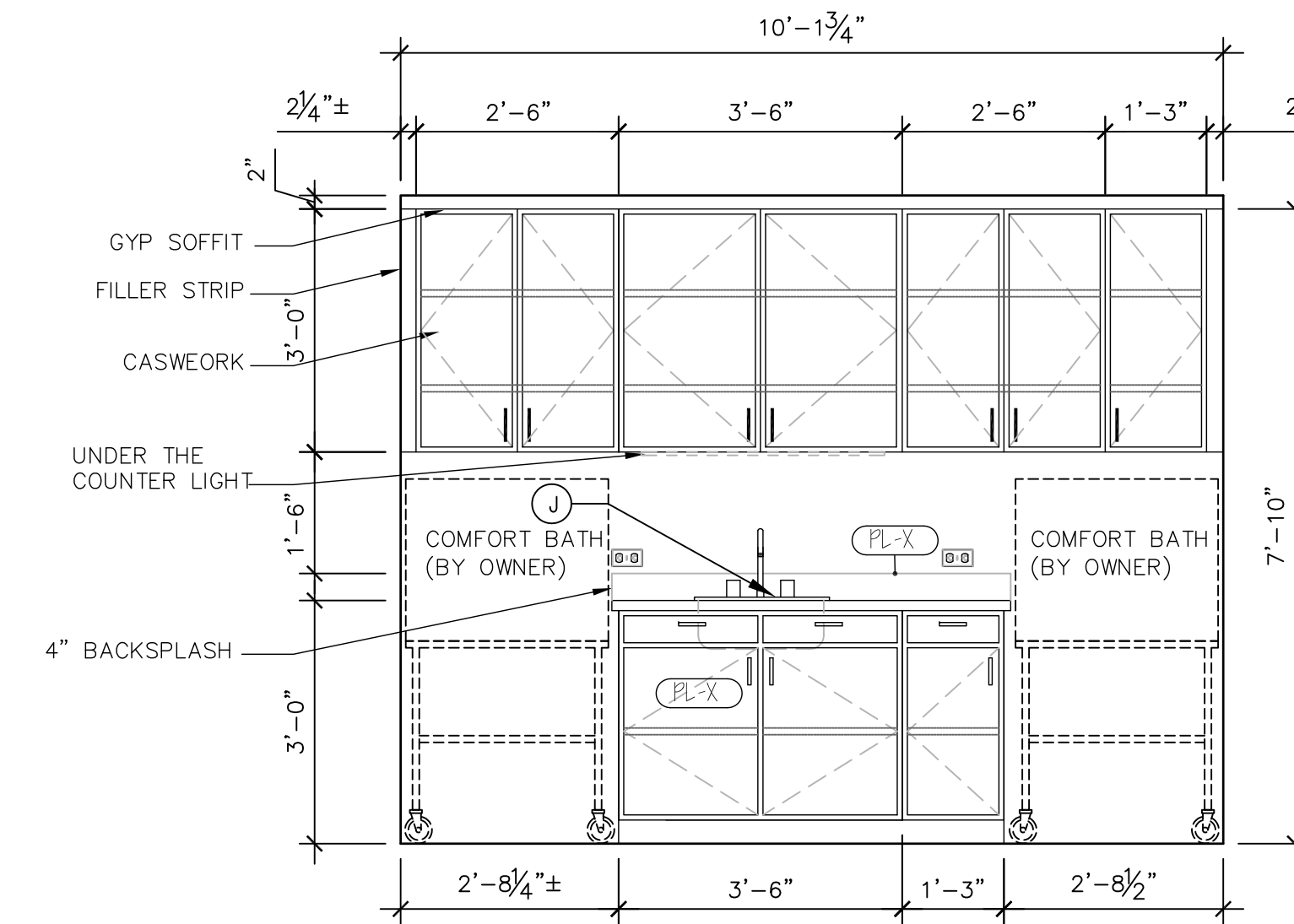
3 KITCHEN ELEVATION  
1/2" = 1'-0"



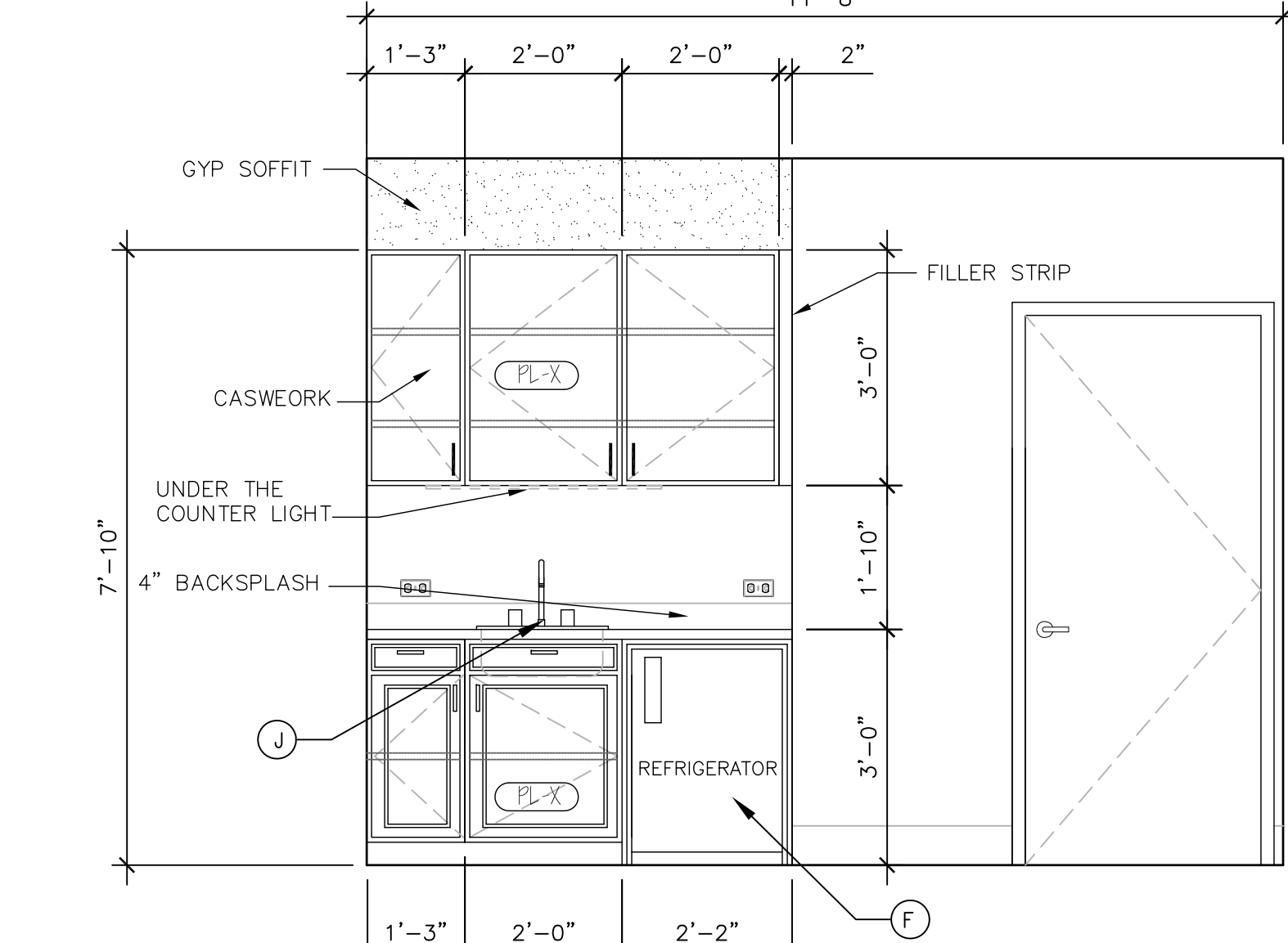
4 MEDS/ MEDS & PYXIS CARTS  
1/2" = 1'-0"



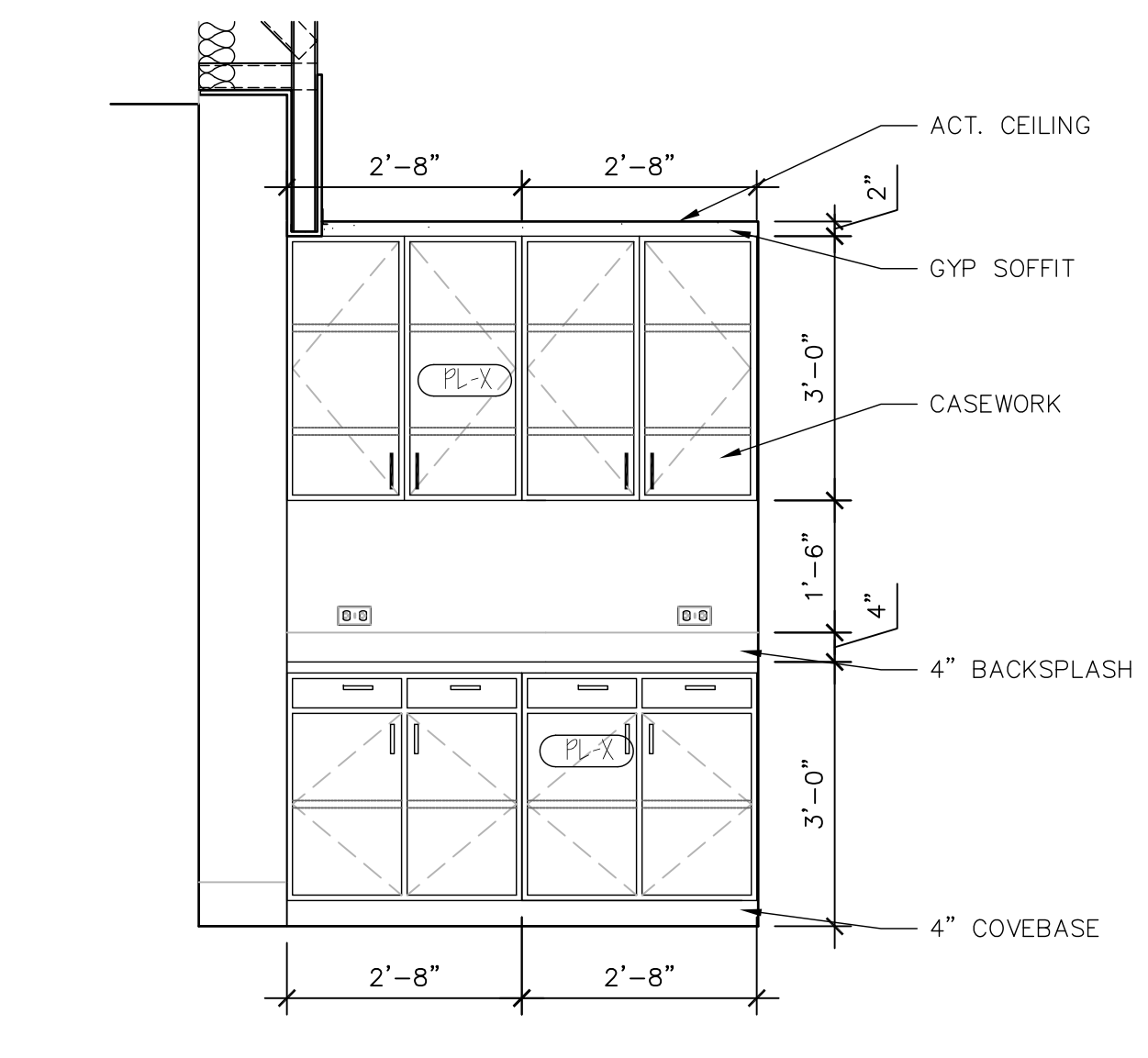
5 SOILED UTILITY ROOM  
1/2" = 1'-0"



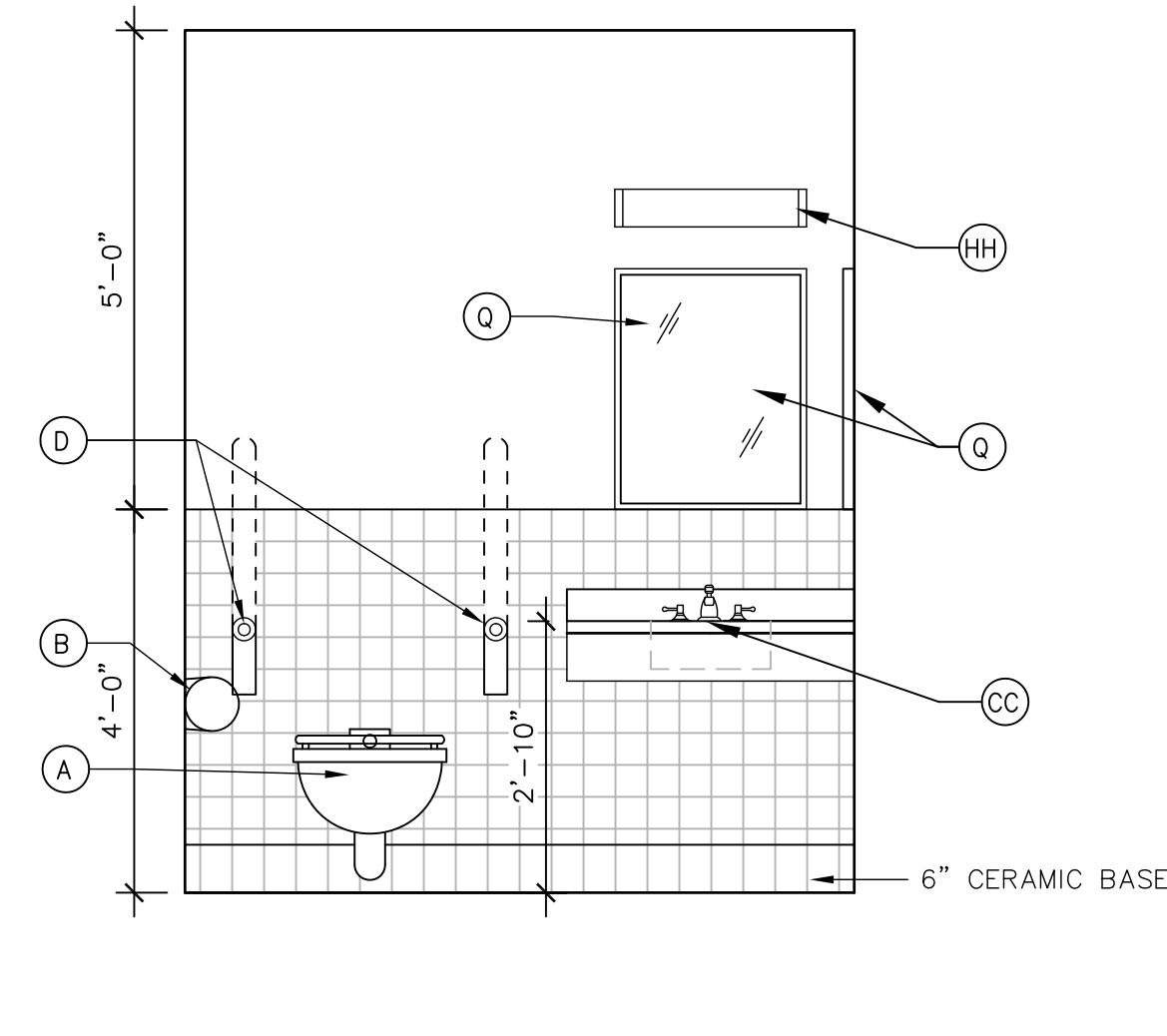
6 CLEAN UTILITY ROOM  
1/2" = 1'-0"



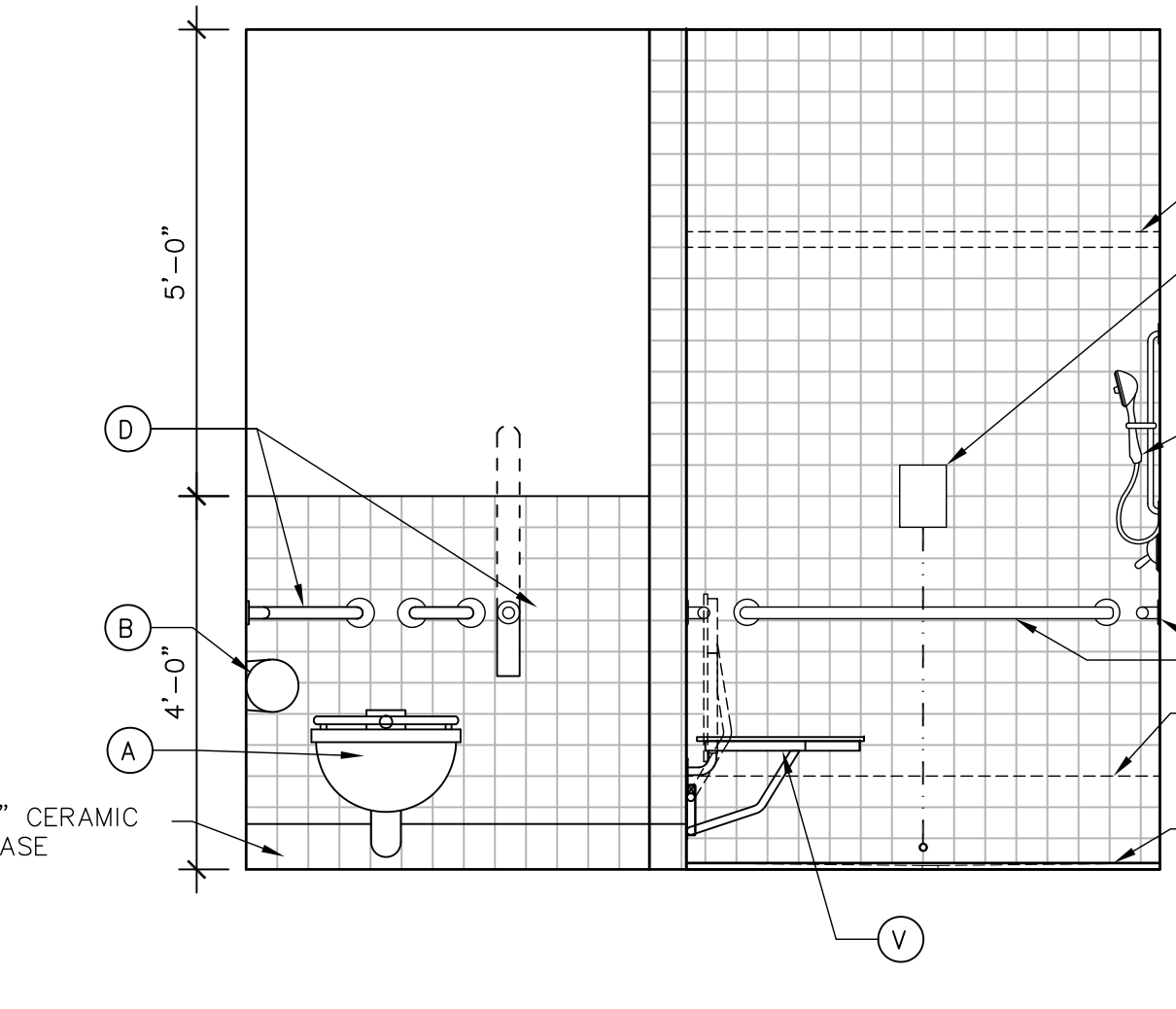
7 STAFF LOUNGE  
1/2" = 1'-0"



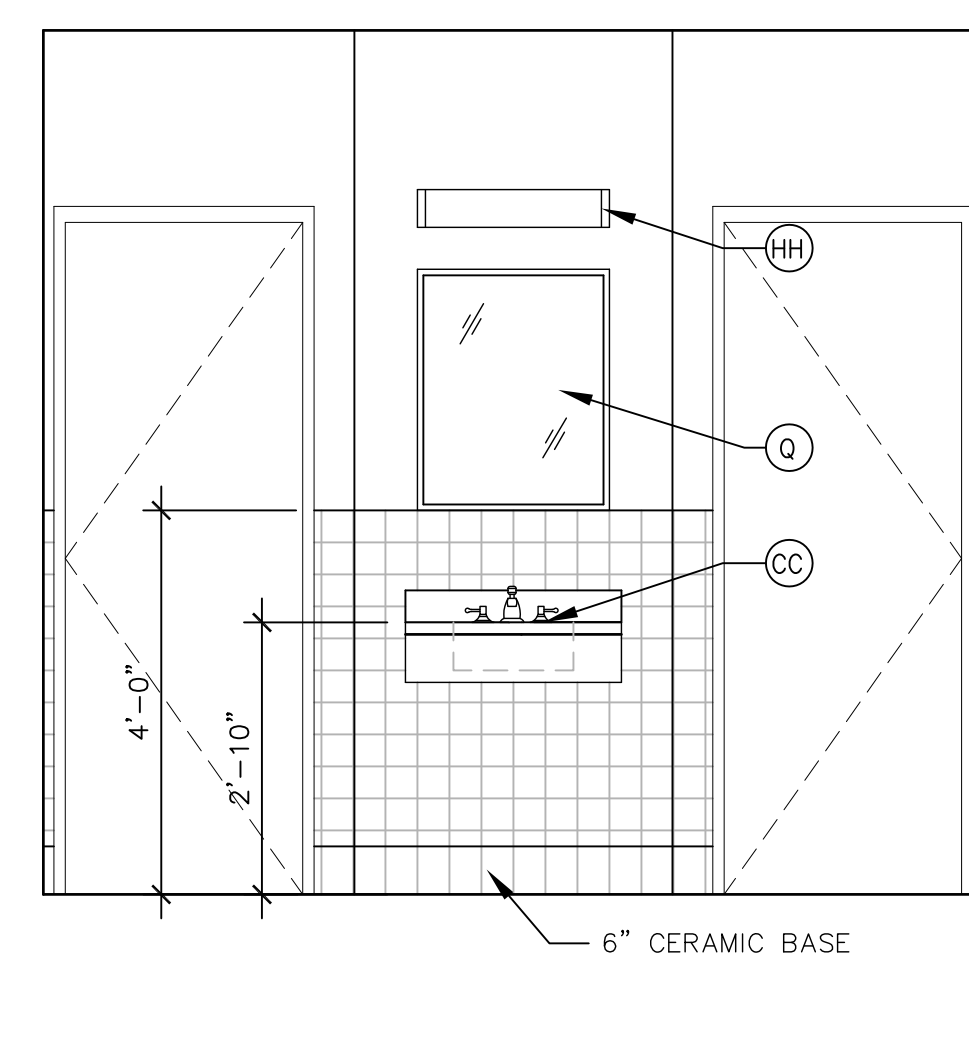
8 PRINT ROOM  
1/2" = 1'-0"



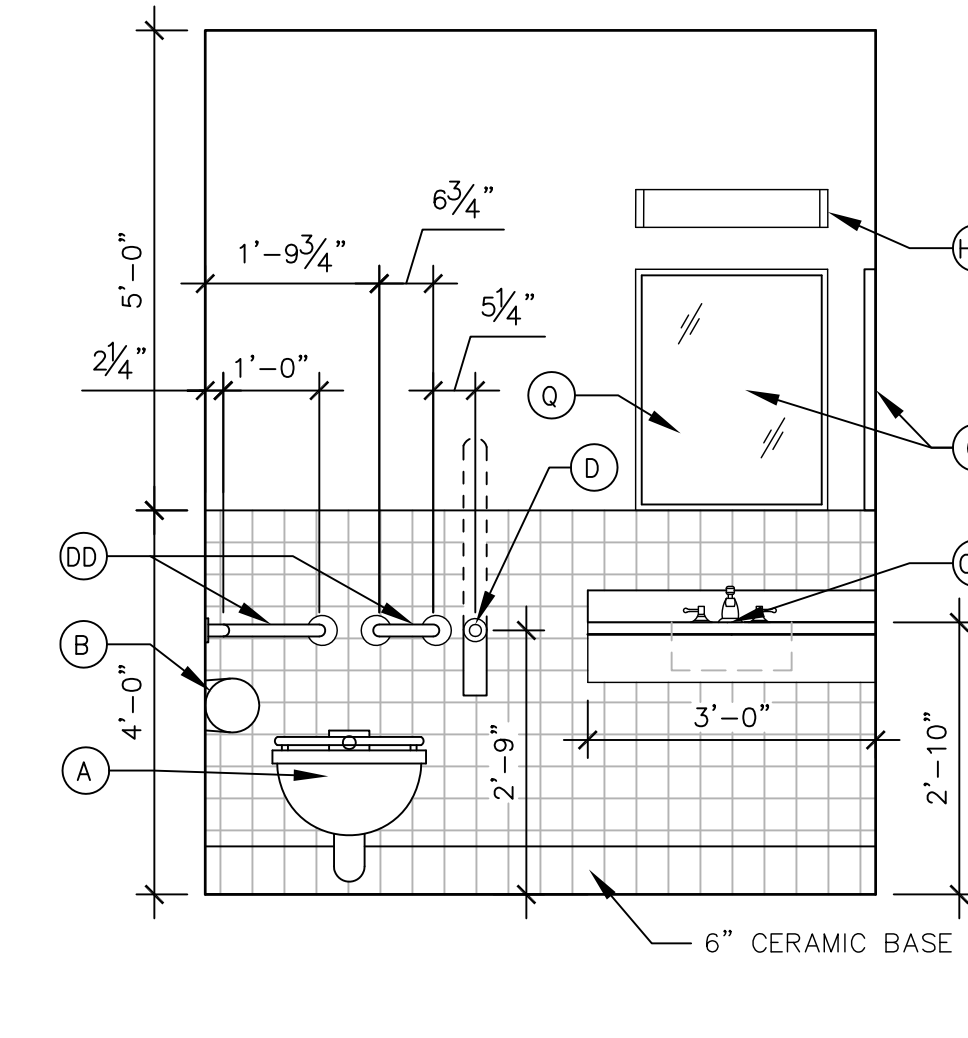
9 PATIENT TOILET ROOM  
1/2" = 1'-0"



10 PATIENT TOILET ROOM 132  
1/2" = 1'-0"



11 PATIENT TOILET ROOM 132  
1/2" = 1'-0"



12 PATIENT TOILET ROOM  
1/2" = 1'-0"

- LEGEND
- (A) WALL MOUNTED WATER CLOSET
  - (B) TOILET TISSUE DISPENSER
  - (C) BARRIER FREE WALL MOUNTED SINK
  - (D) FLIP UP BARRIER FREE GRAB BAR
  - (E) UTILITY SINK
  - (F) UNDER COUNTER REFRIGERATOR
  - (G) CASEWORK (SEE ELEVATION DRAWINGS)
  - (H) SURFACE MOUNTED HAND DRYER
  - (J) COUNTERTOP SINK
  - (K) DECK MOUNTED SOAP DISPENSER
  - (L) WALL MOUNTED WHITE BOARD/ CORK BOARD
  - (M) CURTAIN & CURTAIN TRACK
  - (N) BARRIER FREE SHOWER HEAD
  - (P) FLOOR DRAIN
  - (Q) WALL MOUNTED MIRROR & MEDICINE CABINET
  - (R) HOOKS AND/OR SHELVES
  - (S) LOCKERS
  - (T) SHOWER STALL
  - (U) TOWEL BAR
  - (V) SHOWER SEAT
  - (W) MEDS CARTS/ PYXIS CARTS
  - (X) ARJO TUB
  - (Y) RANGE
  - (Z) REFRIGERATOR
  - (AA) WARMING TRAY
  - (BB) FLOOR MOUNTED WATER CLOSET
  - (CC) INTEGRAL SOLID RESIN SINK W/ BACKSPLASH AND APRON
  - (DD) BARRIER FREE GRAB BAR
  - (EE) HEADBOARD
  - (FF) NURSE CALL W/ PULL CORD
  - (GG) CURTAIN AND CURTAIN ROD
  - (HH) LIGHT FIXTURE (SEE ELEC. DRAWINGS)

NOTE:  
REFER TO INTERIOR ELEVATIONS FOR  
MOUNTING HEIGHTS

Addendum 1	6/21/12
100% Submission	7/02/10
90% Submission	5/27/10
60% Submission	4/22/10
Revisions	Date

VA WESTERN NEW YORK HEALTHCARE SYSTEM  
3495 BAILEY AVENUE  
BUFFALO, NEW YORK 14215

**URS**  
Architect

BUFFALO, NY.,  
77 GOODELL ST  
716-856-5636

stamp

CARDIOLOGY	DATE	ENGINEERING MANAGER	DATE
INFECTION CONTROL	DATE	CARELINE MANAGER	DATE
SAFETY OFFICER	DATE	CHIEF OF STAFF	DATE

Drawing Title	INTERIOR ELEVATIONS
MEDICAL CENTER DIRECTOR	DATE
ASSOCIATE MEDICAL CENTER DIRECTOR	DATE

Project Title	RENOVATION OF BLDG #1, 2ND FLOOR, B-WARD
Building Number	1
Checked	JAC
Drawn	AMA
Location	V.A.M.C. BATAVIA, NEW YORK

Date	JULY 2, 2010 (UPDATED 10/07/10)
Station No.	528
09-352 AS-900	

