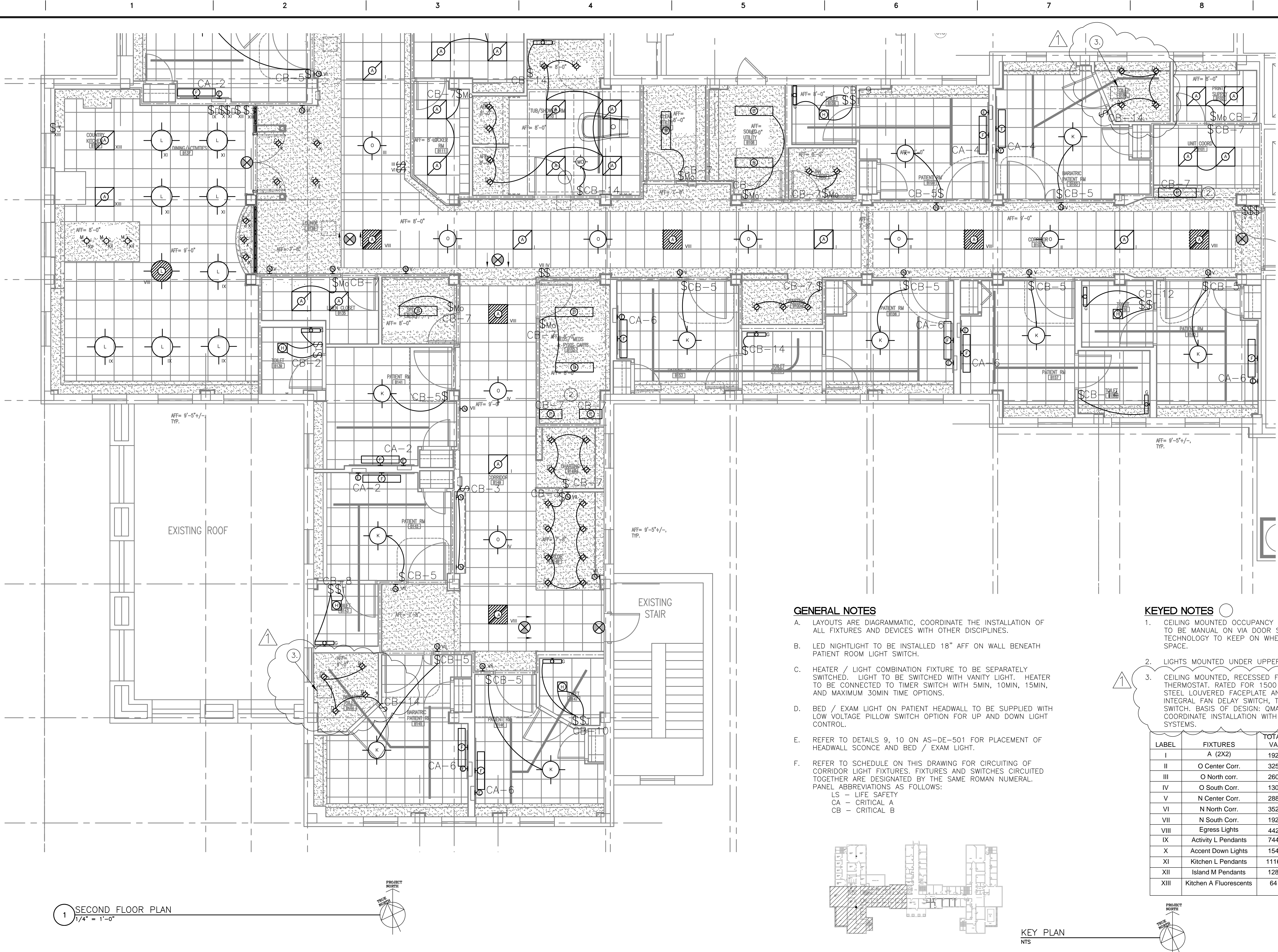


three inches = one foot
one and one-half inch = one foot
one inch = one foot
three-quarters inch = one foot
one-half inch = one foot
three-eighths inch = one foot
one-quarter inch = one foot
one-eighth inch = one foot



Revisions	Date
Addendum 1	6/21/12
100% Submission	7/02/10
90% Submission	5/27/10
60% Submission	4/22/10

VA WESTERN NEW YORK HEALTHCARE SYSTEM
3495 BAILEY AVENUE
BUFFALO, NEW YORK 14215

URS

BUFFALO, NY.,
77 GOODELL ST
716-856-5636

Architect

stamp

CARDIOLOGY	DATE	ENGINEERING MANAGER	DATE
INFECTION CONTROL	DATE	CARELINE MANAGER	DATE
SAFETY OFFICER	DATE	CHIEF OF STAFF	DATE

Drawing Title PARTIAL SECOND FLOOR ("WARD B") LIGHTING PLAN	
MEDICAL CENTER DIRECTOR	DATE
ASSOCIATE MEDICAL CENTER DIRECTOR	DATE

Project Title RENOVATION OF BLDG #1, 2ND FLOOR, B-WARD	
Building Number	Checked
Location V.A.M.C. BATAVIA, NEW YORK	

Date JULY 2, 2010 (UPDATED 10/07/10)
Station No. 528
09-352 EL-201

Office of Facilities

Department of Veterans Affairs

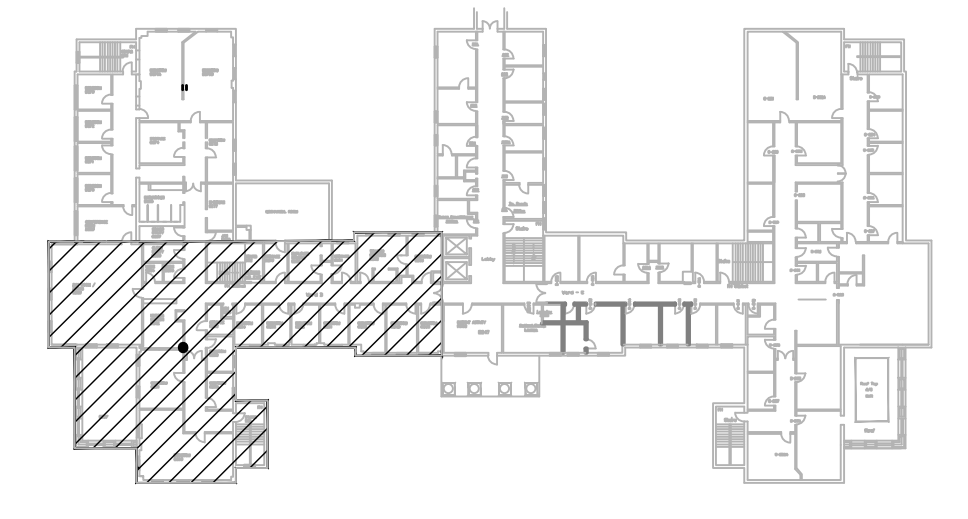
GENERAL NOTES

- A. LAYOUTS ARE DIAGRAMMATIC, COORDINATE THE INSTALLATION OF ALL FIXTURES AND DEVICES WITH OTHER DISCIPLINES.
- B. LED NIGHTLIGHT TO BE INSTALLED 18" AFF ON WALL BENEATH PATIENT ROOM LIGHT SWITCH.
- C. HEATER / LIGHT COMBINATION FIXTURE TO BE SEPARATELY SWITCHED. LIGHT TO BE SWITCHED WITH VANITY LIGHT. HEATER TO BE CONNECTED TO TIMER SWITCH WITH 5MIN, 10MIN, 15MIN, AND MAXIMUM 30MIN TIME OPTIONS.
- D. BED / EXAM LIGHT ON PATIENT HEADWALL TO BE SUPPLIED WITH LOW VOLTAGE PILLOW SWITCH OPTION FOR UP AND DOWN LIGHT CONTROL.
- E. REFER TO DETAILS 9, 10 ON AS-DE-501 FOR PLACEMENT OF HEADWALL SCONCE AND BED / EXAM LIGHT.
- F. REFER TO SCHEDULE ON THIS DRAWING FOR CIRCUITING OF CORRIDOR LIGHT FIXTURES. FIXTURES AND SWITCHES CIRCUITED TOGETHER ARE DESIGNATED BY THE SAME ROMAN NUMERAL. PANEL ABBREVIATIONS AS FOLLOWS:
LS - LIFE SAFETY
CA - CRITICAL A
CB - CRITICAL B

KEYED NOTES

1. CEILING MOUNTED OCCUPANCY SENSOR IS TO BE PROGRAMMED TO BE MANUAL ON VIA DOOR SWITCH AND AUTO OFF, DUAL TECHNOLOGY TO KEEP ON WHEN OBSTACLES ARE IN MOVED INTO SPACE.
2. LIGHTS MOUNTED UNDER UPPER CABINETS OR SHELF.
3. CEILING MOUNTED, RECESSED FAN FORCED HEATER WITH BUILT-IN THERMOSTAT. RATED FOR 1500 WATTS, 5120 BTU/HR, 14 GA STEEL LOUVERED FACEPLATE AND TAMPER-RESISTANT SCREWS, INTEGRAL FAN DELAY SWITCH, THERMAL CUTOFF, AND DISCONNECT SWITCH. BASIS OF DESIGN: QMARK - TYPE EFF, MODEL EFF1500. COORDINATE INSTALLATION WITH MECHANICAL, LIGHTING AND LIFT SYSTEMS.

LABEL	FIXTURES	TOTAL VA	CIRCUIT	SWITCH LOCATION
I	A (2X2)	192	CB-1	Ward Entrance
II	O Center Corr.	325	CB-1	Ward Entrance
III	O North corr.	260	CB-1	Begin North Corridor
IV	O South Corr.	130	CB-1	Begin South Corridor
V	N Center Corr.	288	CB-1	Ward Entrance
VI	N North Corr.	352	CB-1	Begin North Corridor
VII	N South Corr.	192	CB-1	Begin South Corridor
VIII	Egress Lights	442	LS-4	NONE
IX	Activity L Pendants	744	CB-3	Near Dining Entrance
X	Accent Down Lights	154	CB-3	Near Dining Entrance
XI	Kitchen L Pendants	1116	CB-4	Near Dining Entrance
XII	Island M Pendants	128	CB-4	Near Dining Entrance
XIII	Kitchen A Fluorescents	64	CB-4	3-Way Kitchen / Entrance



KEY PLAN
NTS

0' 2' 4' 6' 8'
SCALE: 1/4" = 1'-0"