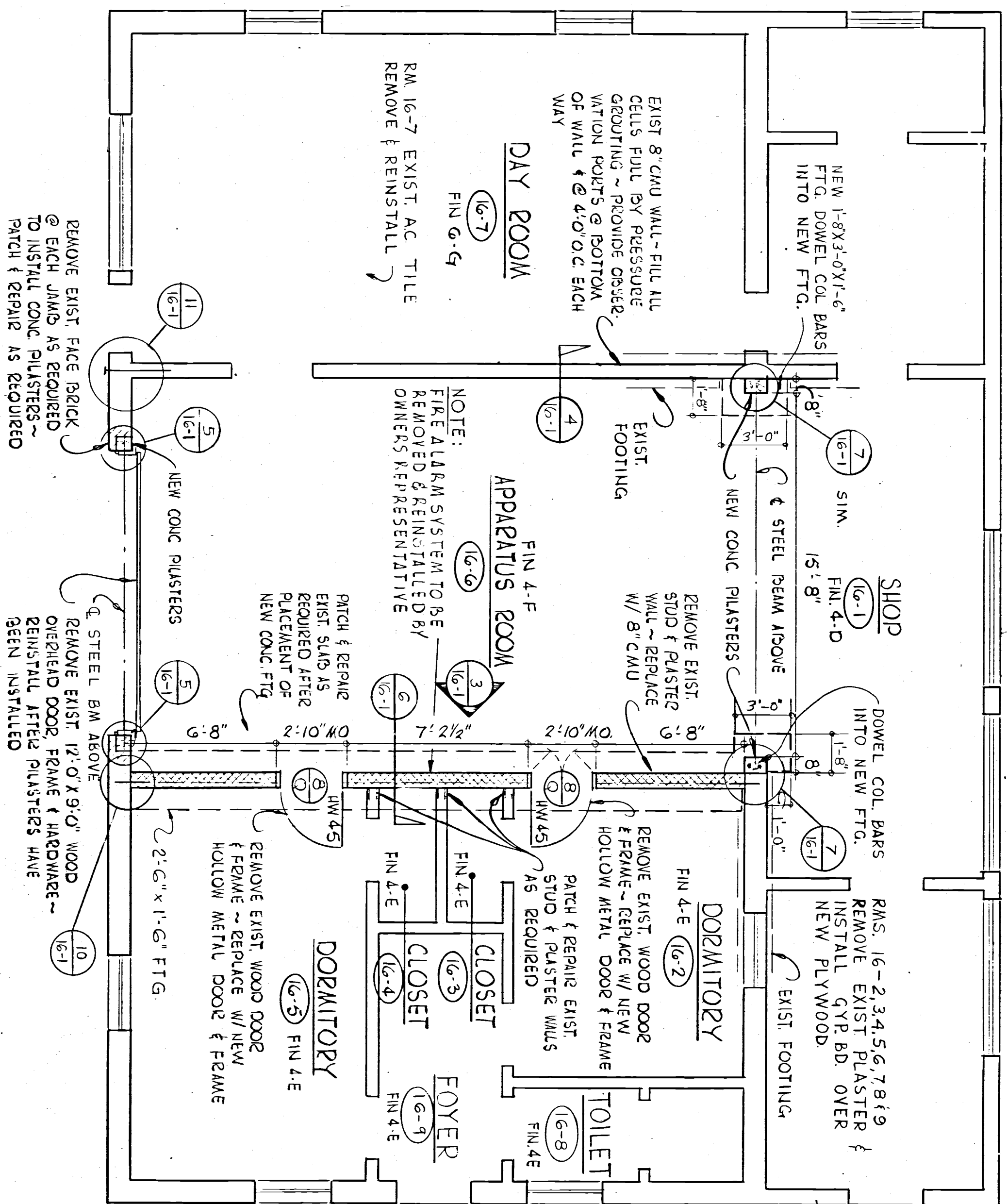


NOTES

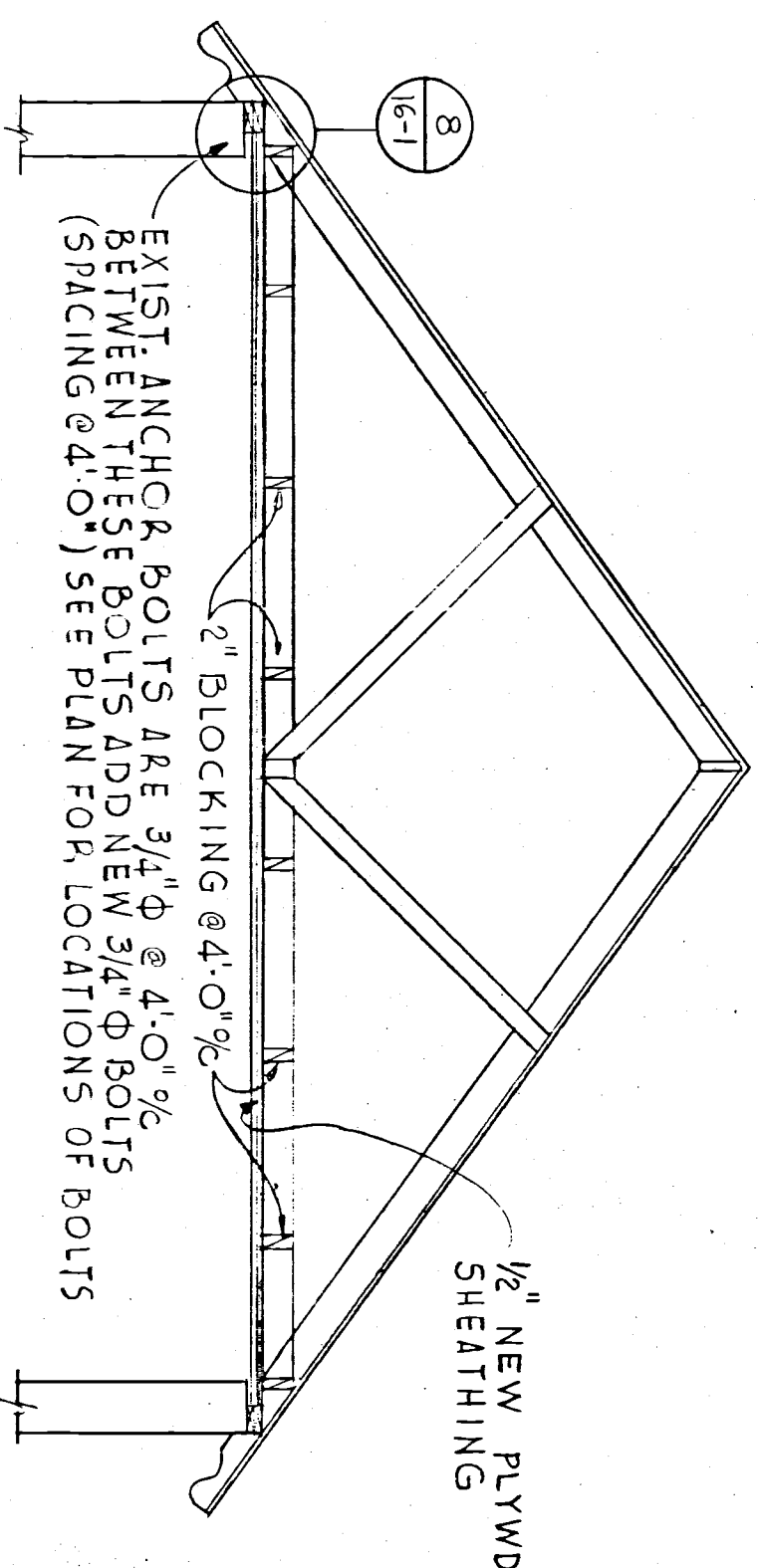
- New attic diaphragm shall be 1/2" Structural Grade II plywood and shall be nailed as follows, unless otherwise noted:
 - 8d at 2' 0" O.C.-----Along diaphragm boundaries and continuous panel edges.
 - 8d at 3' 0" O.C.-----Along other panel edges.
 - 8d at 10' 0" O.C.-----Along intermediate framing members.
- New concrete masonry unit walls shall have all cells grouted full and shall be reinforced as follows, unless otherwise noted:
 - Vertical - 2 #5 bars at each corner, and at ends of walls.
 - Horizontal - 2 #4 bars at top and bottom of walls and at 40' O.C. in between.
- Openings - Trim bars around openings shall be 2 #5 bars, both horizontal and vertical. Horizontal bars shall be placed in bond beam units.

- Remove existing wall footings to install both new concrete pilasters and 8 inch CMU wall footings. Dowels between new and existing footings are not necessary. Bottom of both new concrete pilasters and 8 inch CMU wall footings are 2'-0" below top of existing floor slab.



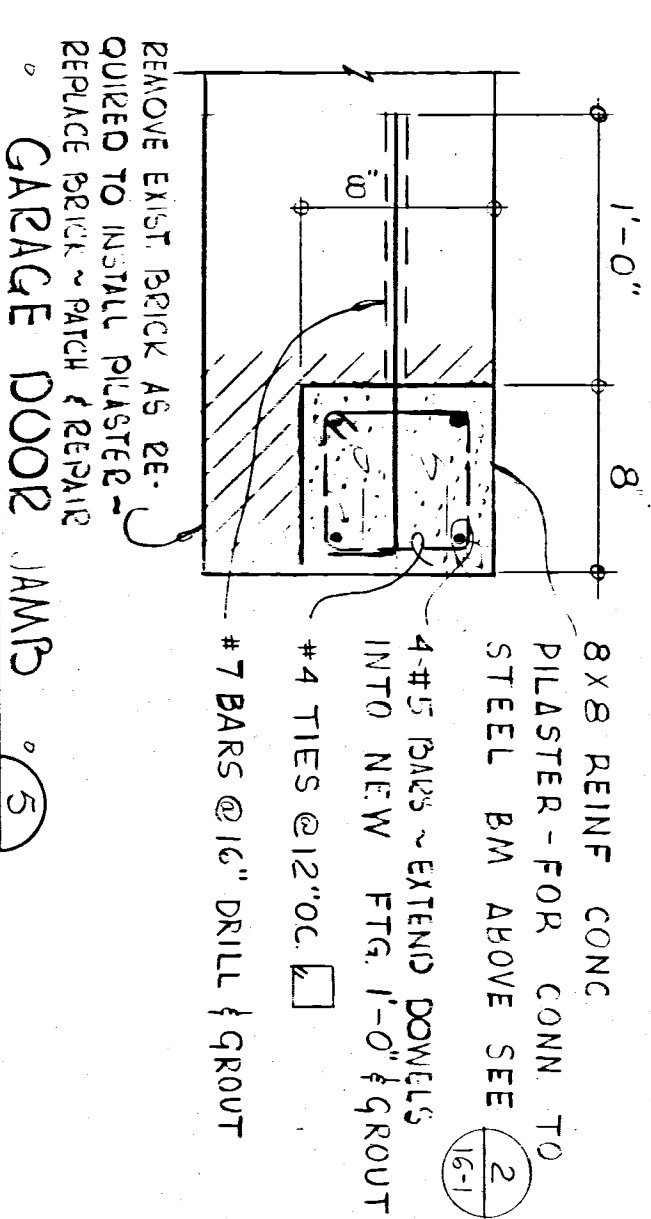
MAIN FLOOR PLAN

SCALE: 1/4" = 1'-0"



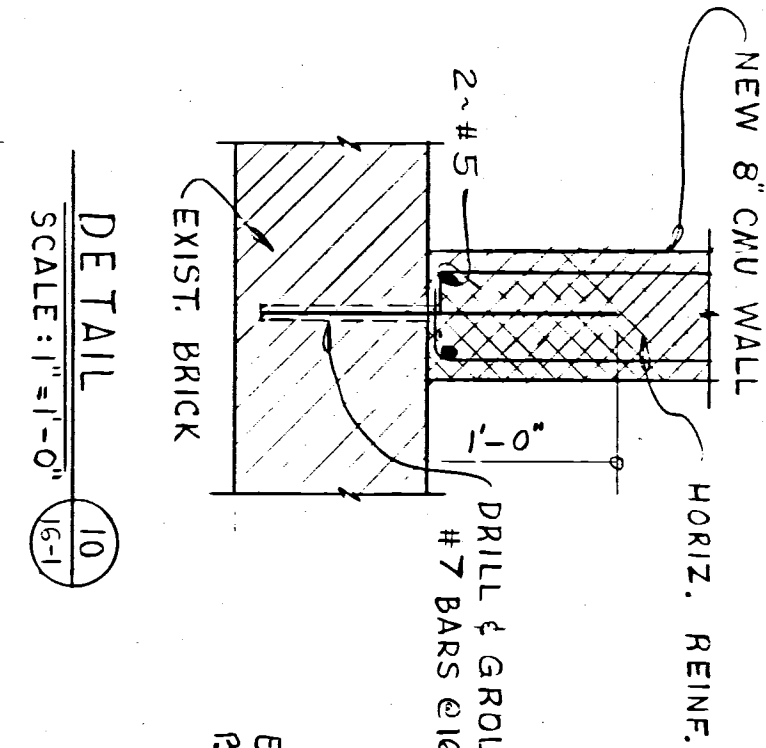
PARTIAL BUILDING SECTION

SCALE: 1/2" = 1'-0"



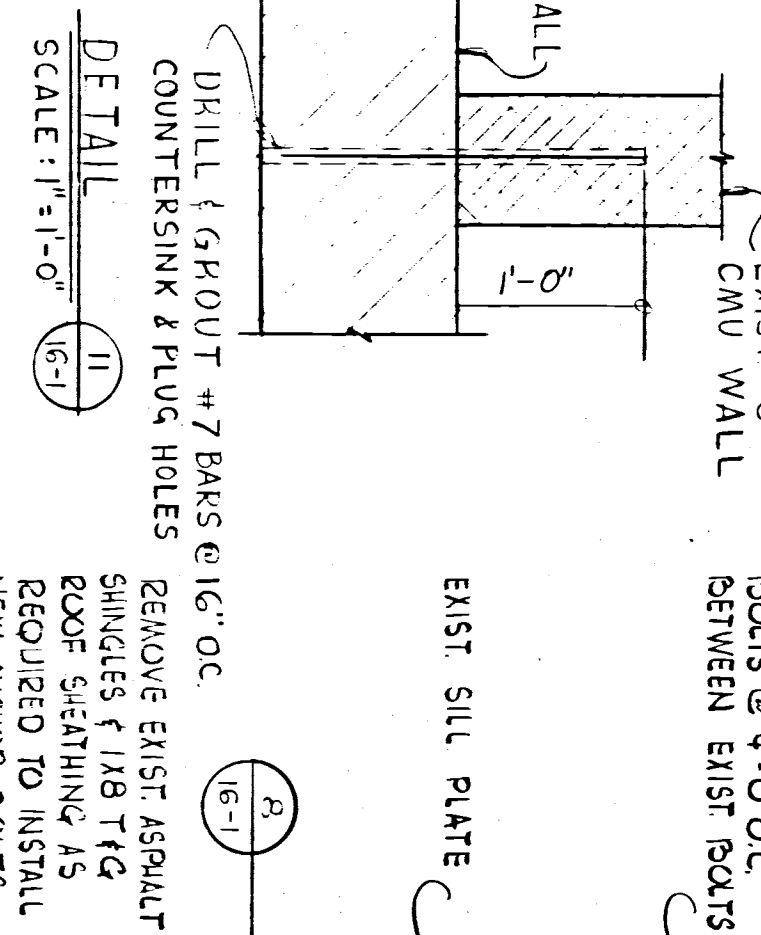
SECTION

SCALE: 1/2" = 1'-0"



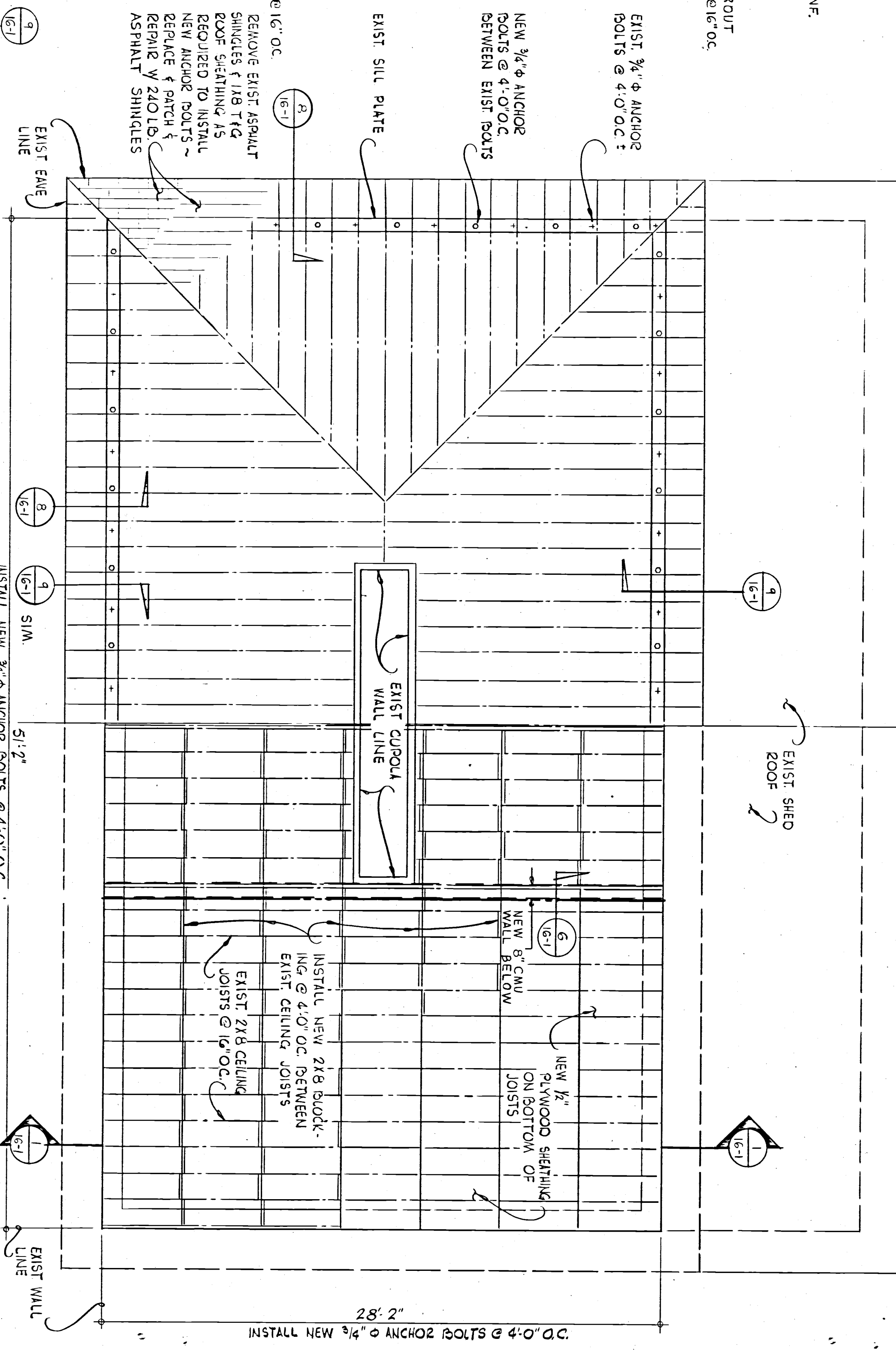
DETAIL

SCALE: 1/2" = 1'-0"



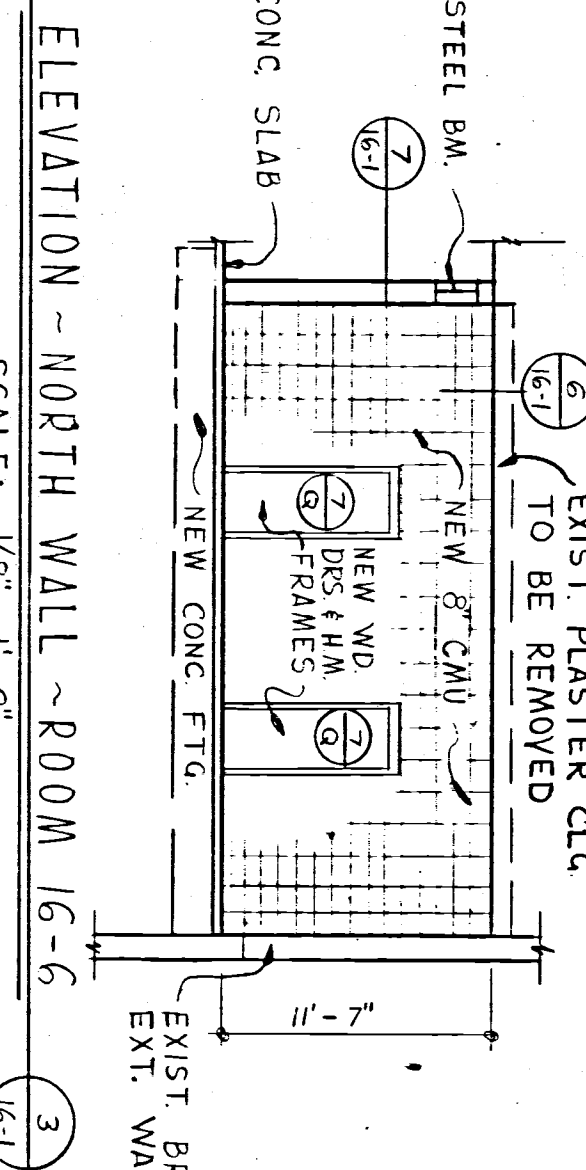
DETAIL

SCALE: 1/2" = 1'-0"



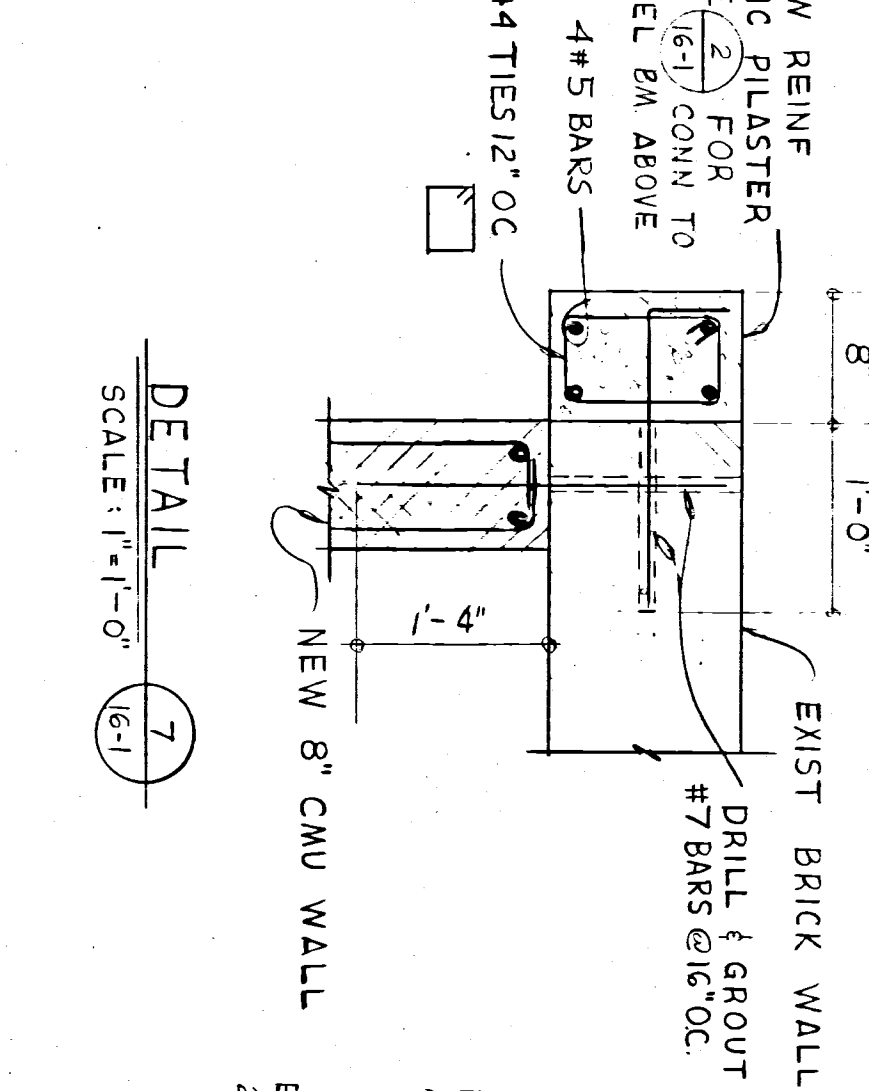
ROOF & CEILING FRAMING PLAN

SCALE: 1/4" = 1'-0"



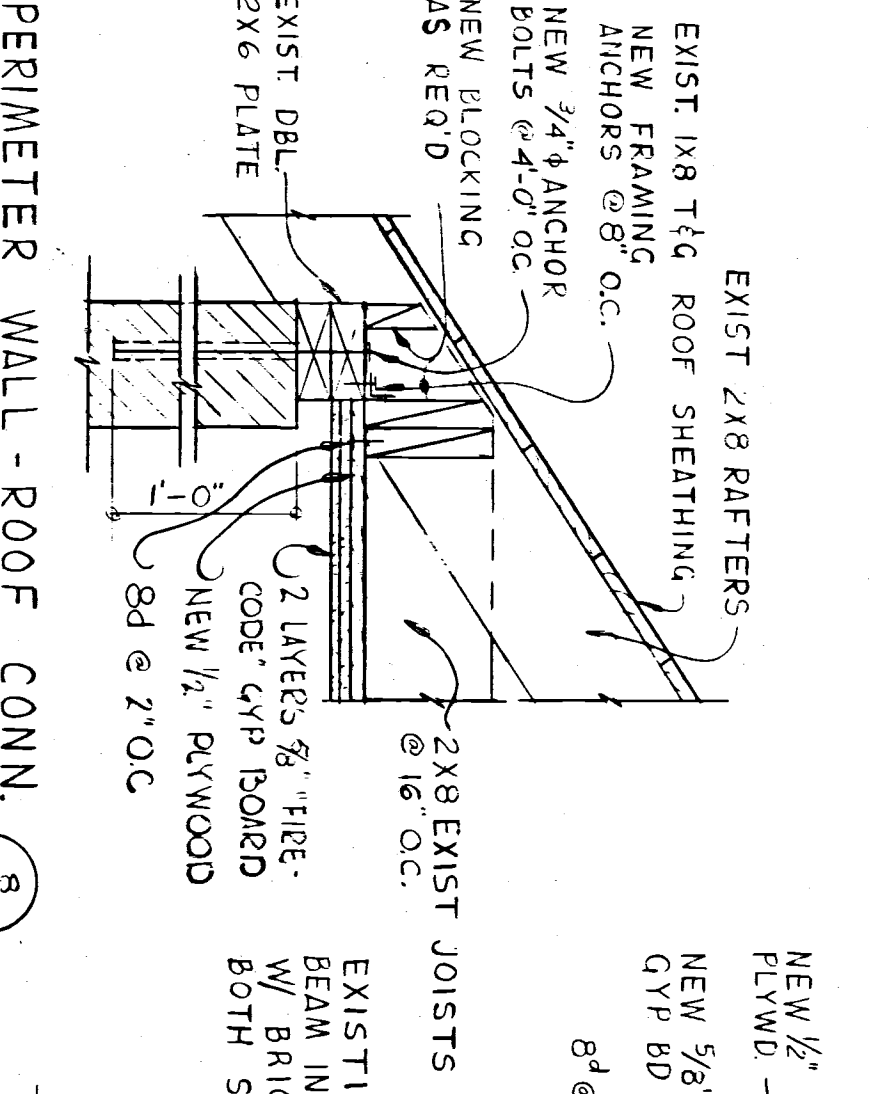
ELEVATION - NORTH WALL - ROOM 16-6

SCALE: 1/2" = 1'-0"



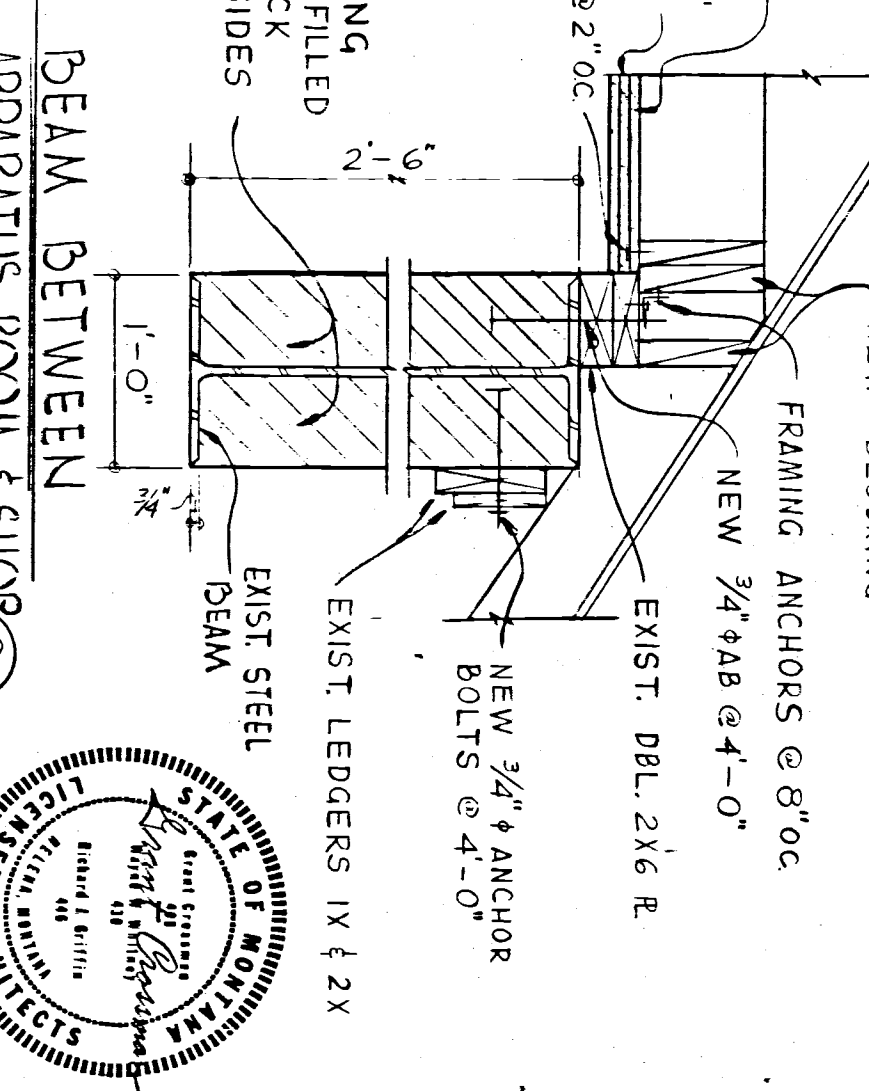
SECTION

SCALE: 1/2" = 1'-0"



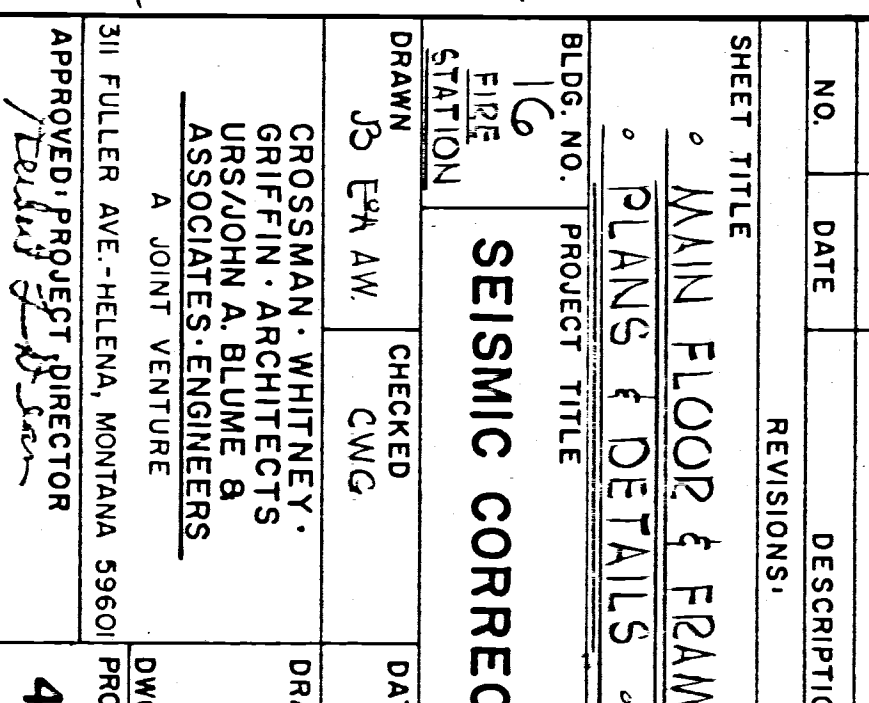
DETAIL

SCALE: 1/2" = 1'-0"



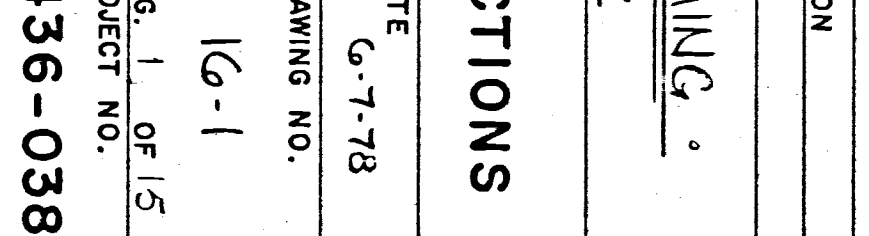
DETAIL

SCALE: 1/2" = 1'-0"



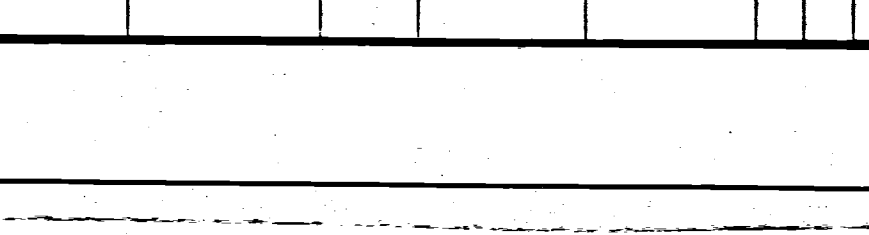
DETAIL

SCALE: 1/2" = 1'-0"



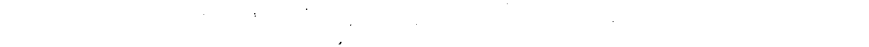
DETAIL

SCALE: 1/2" = 1'-0"



DETAIL

SCALE: 1/2" = 1'-0"



DETAIL

SCALE: 1/2" = 1'-0"

DETAIL

SCALE: 1/2" = 1'-0"

DETAIL

SCALE: 1/2" = 1'-0"

DETAIL

SCALE: 1/2" = 1'-0"

DETAIL

SCALE: 1/2" = 1'-0"

DETAIL

SCALE: 1/2" = 1'-0"

DETAIL

SCALE: 1/2" = 1'-0"

DETAIL

SCALE: 1/2" = 1'-0"

DETAIL

SCALE: 1/2" = 1'-0"

DETAIL

SCALE: 1/2" = 1'-0"

DETAIL

SCALE: 1/2" = 1'-0"

DETAIL

SCALE: 1/2" = 1'-0"

DETAIL

SCALE: 1/2" = 1'-0"

DETAIL

SCALE: 1/2" = 1'-0"

DETAIL

SCALE: 1/2" = 1'-0"

DETAIL

SCALE: 1/2" = 1'-0"

DETAIL

SCALE: 1/2" = 1'-0"

DETAIL

SCALE: 1/2" = 1'-0"

DETAIL

SCALE: 1/2" = 1'-0"

DETAIL

SCALE: 1/2" = 1'-0"

DETAIL

SCALE: 1/2" = 1'-0"

DETAIL

SCALE: 1/2" = 1'-0"

DETAIL

SCALE: 1/2" = 1'-0"

DETAIL

SCALE: 1/2" = 1'-0"

DETAIL

SCALE: 1/2" = 1'-0"

DETAIL

SCALE: 1/2" = 1'-0"

DETAIL

SCALE: 1/2" = 1'-0"

DETAIL

SCALE: 1/2" = 1'-0"

DETAIL

SCALE: 1/2" = 1'-0"

DETAIL

SCALE: 1/2" = 1'-0"

DETAIL

SCALE: 1/2" = 1'-0"

DETAIL

SCALE: 1/2" = 1'-0"

DETAIL

SCALE: 1/2" = 1'-0"

DETAIL

SCALE: 1/2" = 1'-0"

DETAIL

SCALE: 1/2" = 1'-0"

DETAIL

SCALE: 1/2" = 1'-0"

DETAIL

SCALE: 1/2" = 1'-0"

DETAIL

SCALE: 1/2" = 1'-0"

DETAIL

SCALE: 1/2" = 1'-0"

DETAIL

SCALE: 1/2" = 1'-0"

DETAIL

SCALE: 1/2" = 1'-0"

DETAIL

SCALE: 1/2" = 1'-0"

DETAIL

SCALE: 1/2" = 1'-0"

DETAIL

SCALE: 1/2" = 1'-0"

