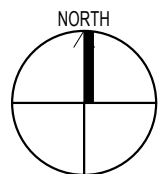
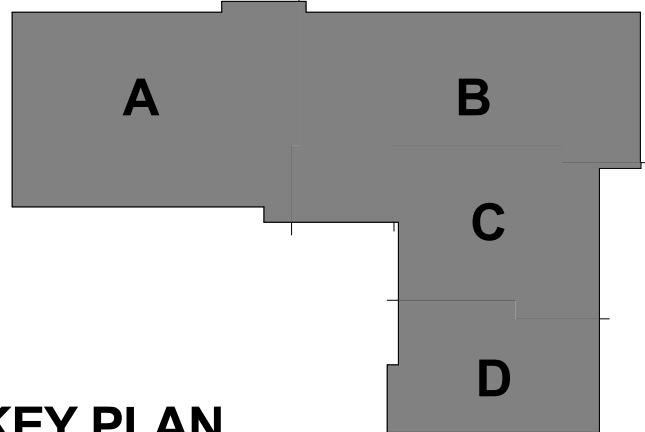


Department Legend

1-LOGISTICS	2,744 SF
2-PACT MODULE #1	
2-PACT MODULE #1, #2 & #3	26,562 SF
2-PACT MODULE #1 AND #2	
3-PACT MODULE #2	
4-PACT MODULE #3	
5-CANTEEN	979 SF
6-CLINIC MANAGEMENT	3,208 SF
7-ENGINEERING	1,288 SF
8-LOBBY	1,843 SF
8-LOBBY /COMMON AREA	14,04 SF
9-MENTAL HEALTH	6,301 SF
10-PATHOLOGY AND LABORATORY MEDICINE (PLM)	3,943 SF
11-PHARMACY	3,364 SF
12-POLICE AND SECURITY	823 SF
13-MULTI-SPECIALTY CAR/ANCILLARY DIAGNOSTIC SERVICES	5,732 SF
14-RADIOLOGY	6,788 SF
15-BUSINESS SERVICES	1,484 SF
16-OPC: SUPPLY, PROCESS AND DISTRIBUTION (SPD)	1,431 SF
18-OPC: VOLUNTARY SERVICE	144 SF
19-OPC-ENDOSCOPY	544 SF
20-ENVIRONMENTAL MANAGEMENT(EMS)	1,114 SF
21-OPC-EMS: LOCKERS, LOUNGES, TOILETS, AND SHOWERS	868 SF
23-EDUCATION AREA	490 SF
25-PROSTHETICS AND SENSORY AIDS	297 SF
26-URGENT CARE	5875 SF
BLDG CIRCULATION	16,948 SF
BLDG MEP	1,143 SF

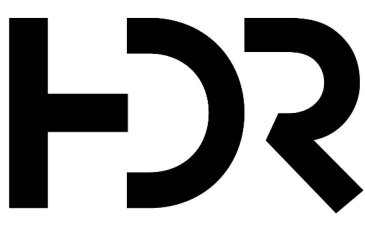


1 DEPARTMENT FLOOR PLAN 16
1/16" = 1'-0"

Project Status
NOT FOR CONSTRUCTION-FULLY SPRINKLERED

CONSULTANTS:

ARCHITECTS/ENGINEERS:



601 UNION STREET, SUITE 700
SEATTLE, WA 98101
P: 206.836.4700
F: 206.836.4701

Drawing Title
FIRST FLOOR DEPARTMENTS PLAN

Approved: Project Director

Project Title
VA COMMUNITY BASED
OUTPATIENT CLINIC

Location
Redding, CA

Date
11/20/2015

Checked by
Checker

Drawn
Author

Drawing number
A-301

Office of
Construction
and Facilities
Management



C:\MY01502601\VA\VA-CBC-REDDING-OUTPATIENT\JH.M
10/4/2017 4:07:29 PM