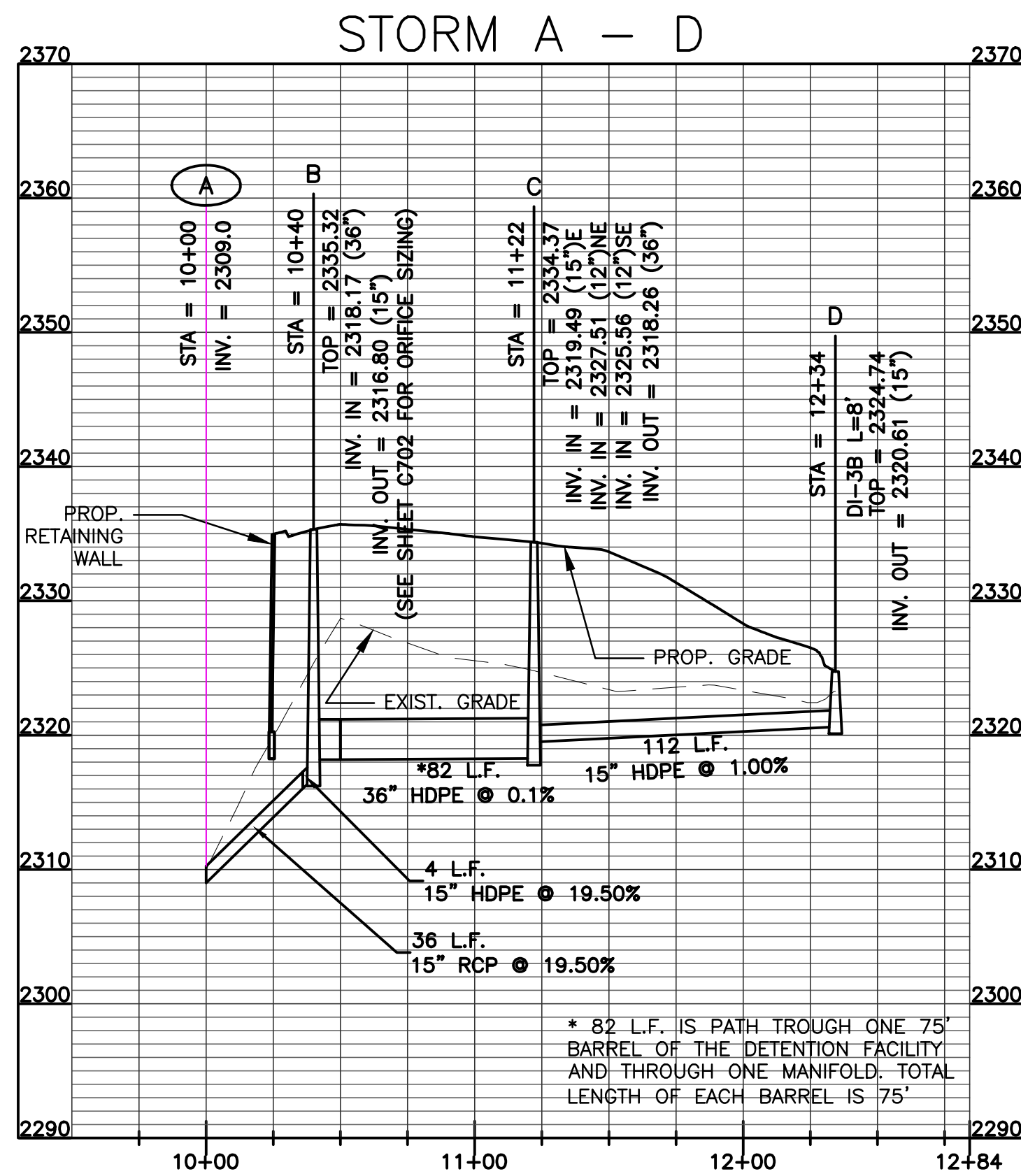
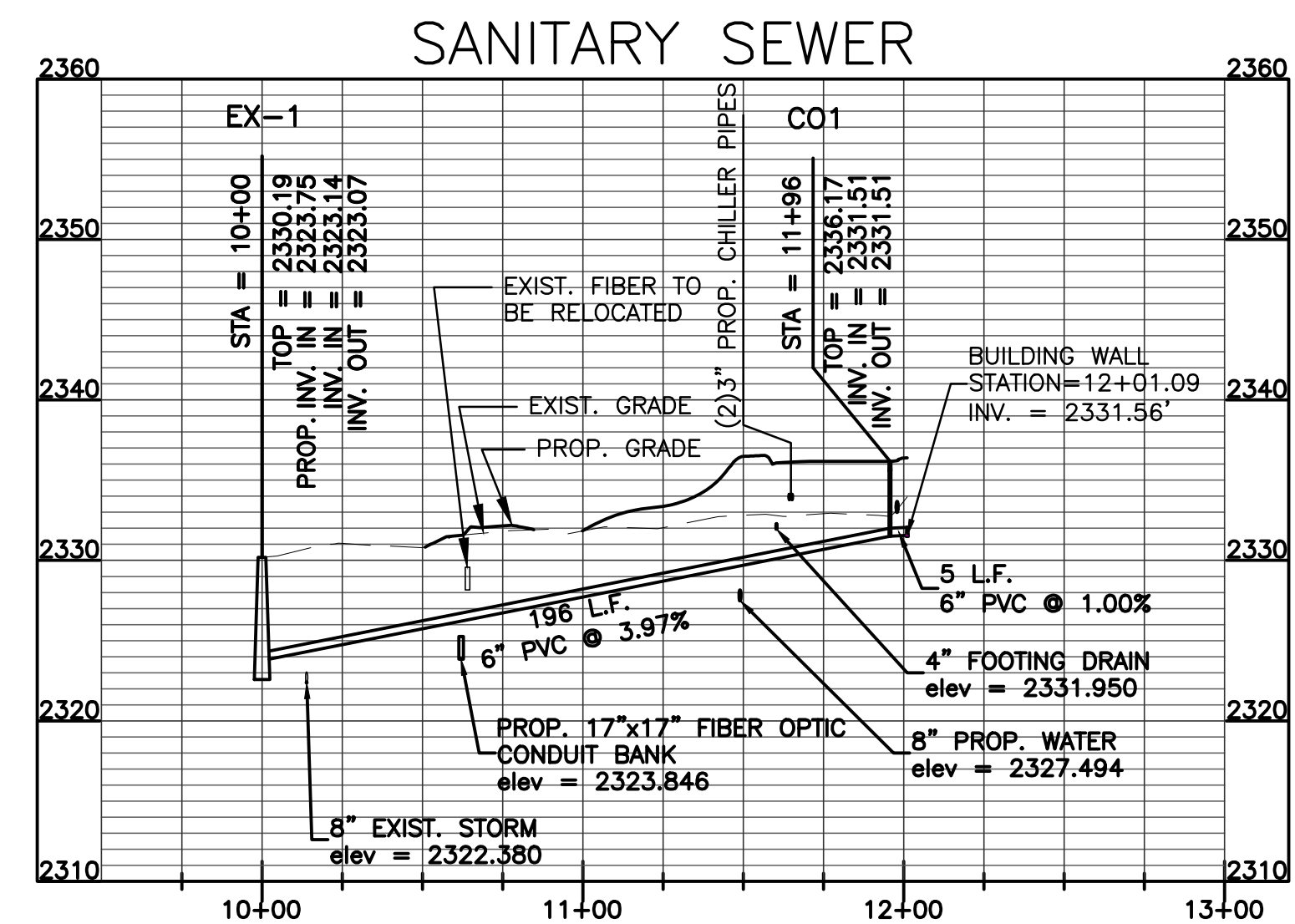
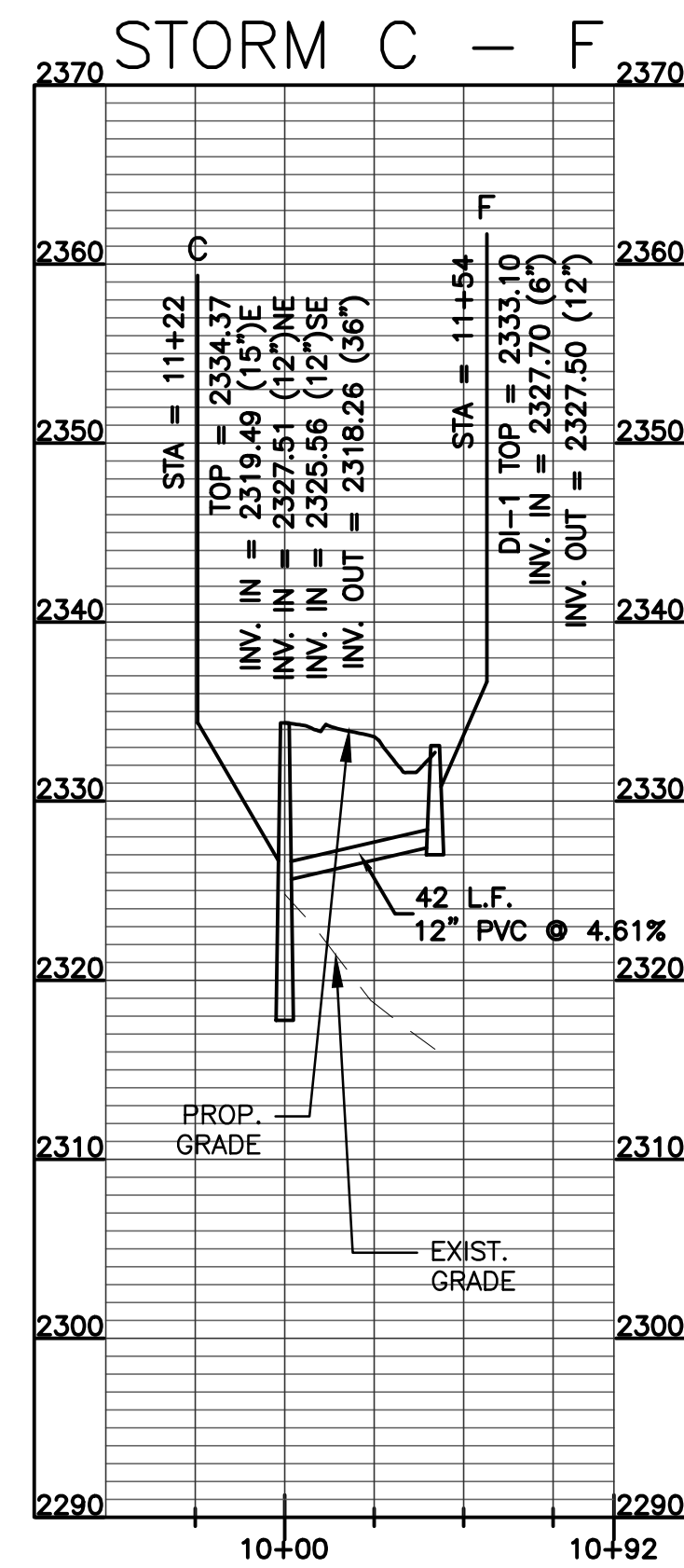
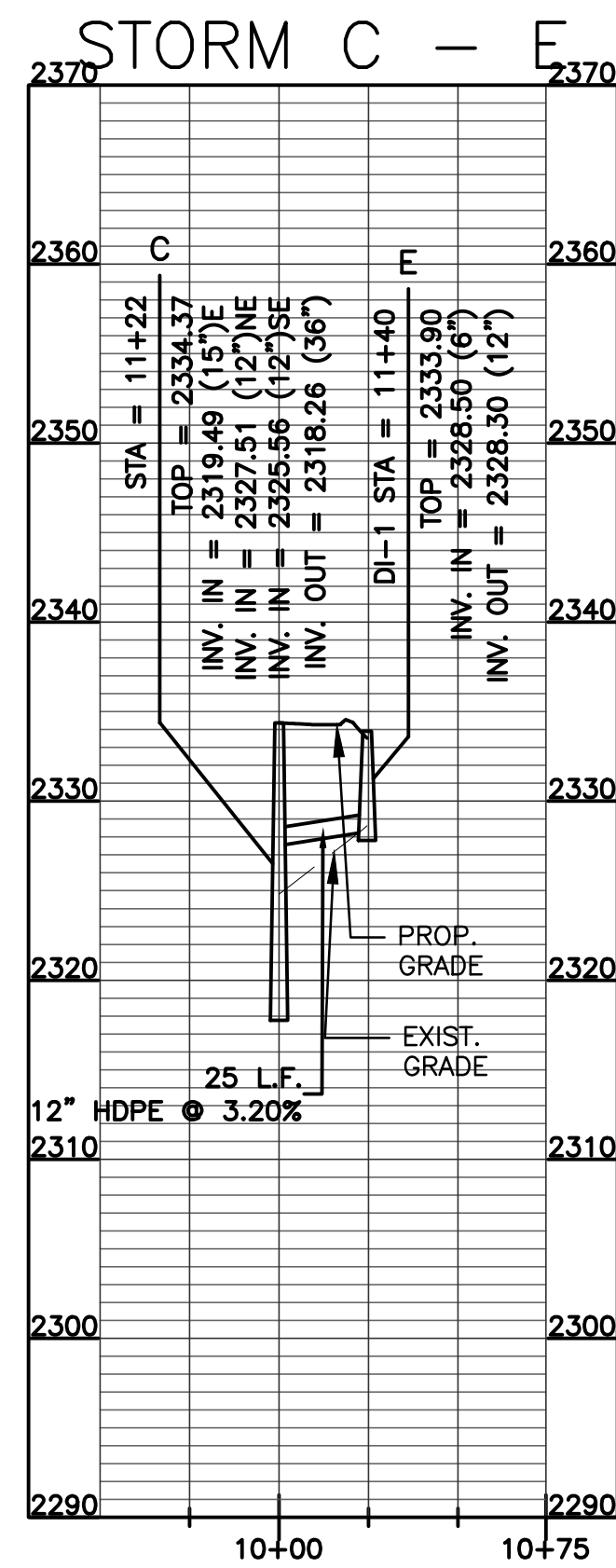


three inches = one foot  
one and one half inches = one foot  
one inch = one foot  
three quarters inch = one foot  
one half inch = one foot  
three eighths inch = one foot  
one quarter inch = one foot  
one eighth inch = one foot

Cooper / Aug 05, 2011 2:49pm / V:\PROJECTS\Projects\24\24463\24463\_ENGINEERING\Design\Plans\24463\_Sheet Utility\_Profile.dwg: Utility Profiles



- NOTE:
- 15" HDPE PIPE SHALL BE CONNECTED TO 15" CLASS IV RCP PIPE USING MAR MAC COUPLING FOR DISSIMILAR MATERIALS. COUPLING SHALL BE INSTALLED PER MANUFACTURER'S RECOMMENDATIONS.
  - ALL THREE 75' LINER FOOT, 36" DIAMETER, PIPE DETENTION BARRELS SHALL BE INSTALLED WITH A LINER SLOPE OF 0.1% TO ALLOW POSITIVE FLOW FROM STRUCTURE C TO STRUCTURE B

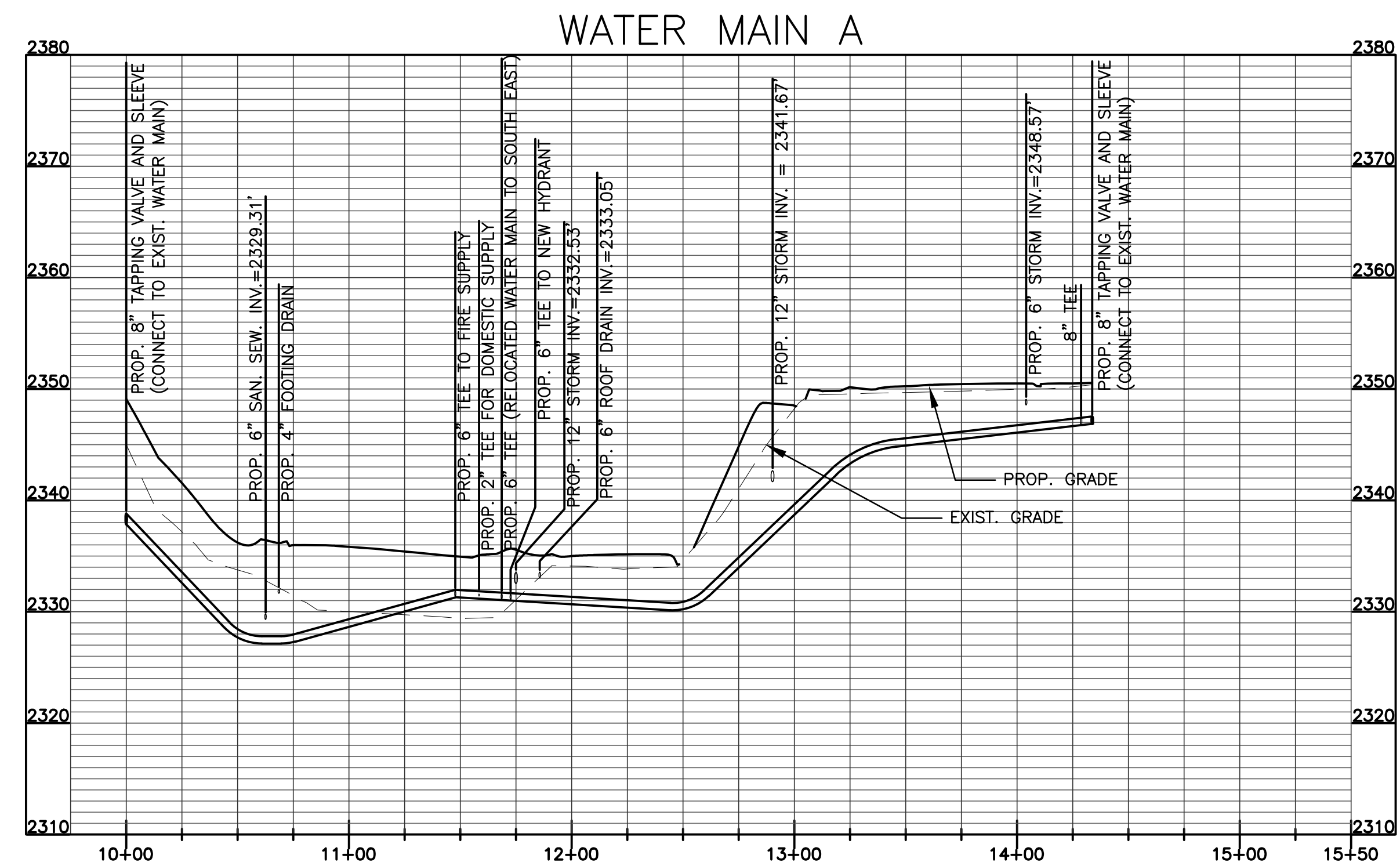
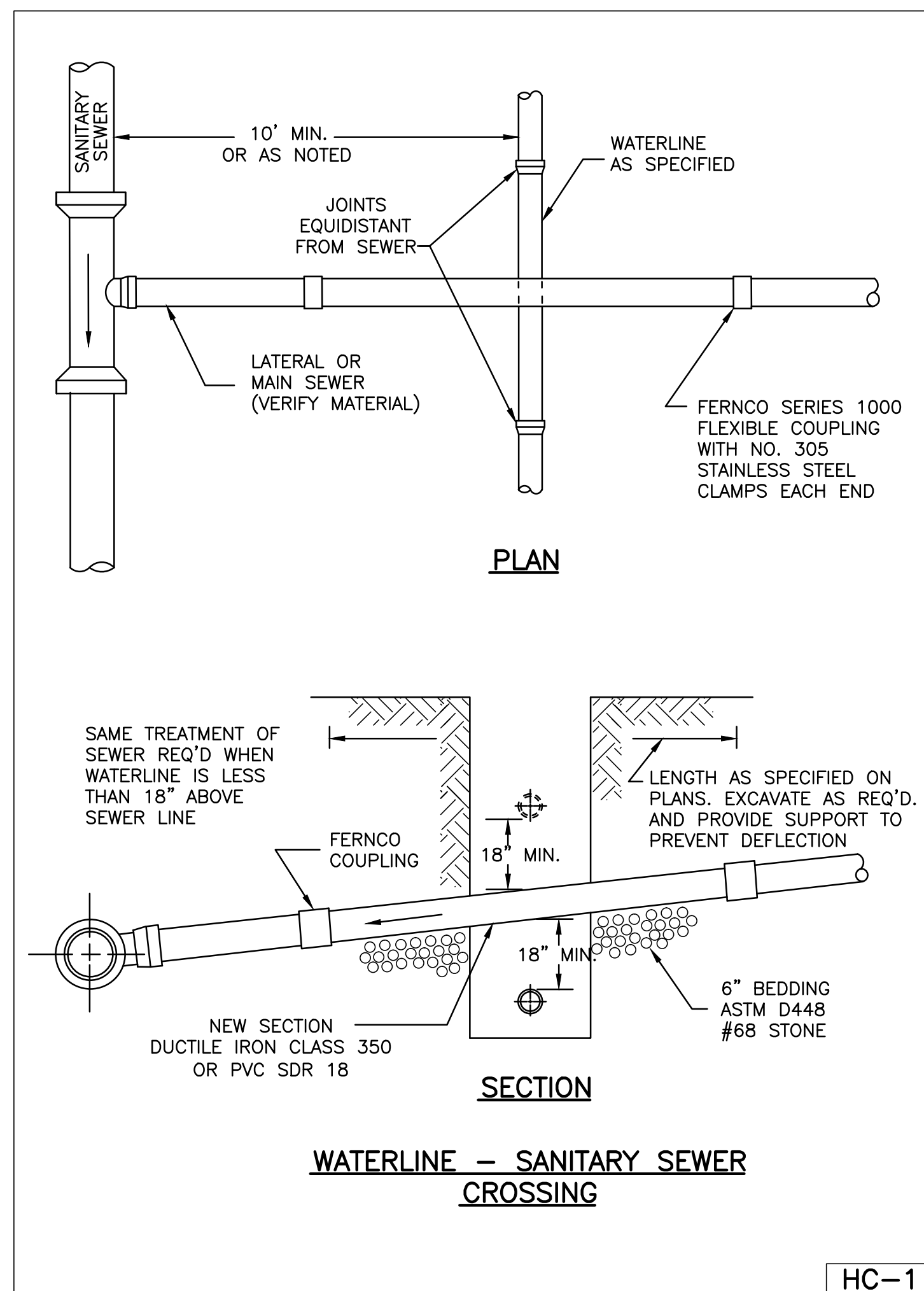


HORIZONTAL SCALE= 1"=50'

0 50 100  
SCALE IN FEET

VERTICAL SCALE= 1"=20'

0 10 20  
SCALE IN FEET



CONSULTANTS:



**ANDERSON & ASSOCIATES, INC.**  
Professional Design Services  
www.andassoc.com

100 Ardmore St.  
Blacksburg, VA 24060  
540-552-5592

ARCHITECT/ENGINEERS:

**SFC**

SFC Inc. 305 South Jefferson Street  
Roanoke, Virginia 24011.2003  
540.344.6664 Fax 540.343.6925  
www.sfc.com

Drawing Title  
UTILITY PROFILES

Approved Project Director

Project Title  
Adult Day Care Building  
VA Medical Center  
Comm No.1010.00

Location  
Beckley, West Virginia

Date  
05/AUG/2011

Checked  
---

Drawn  
SMH/EC

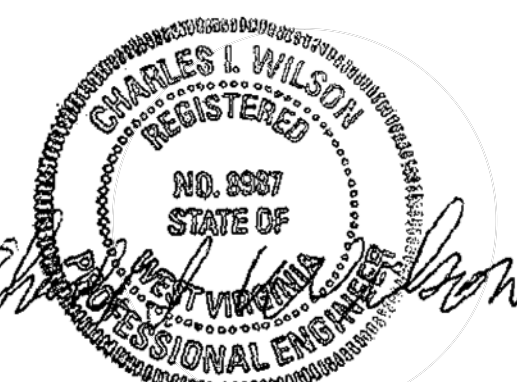
Project Number  
VA246-P-0568

Building Number  
-

Drawing Number

C302  
Dwg. 7 of 77

Office of  
Construction  
and Facilities  
Management



Department of  
Veterans Affairs