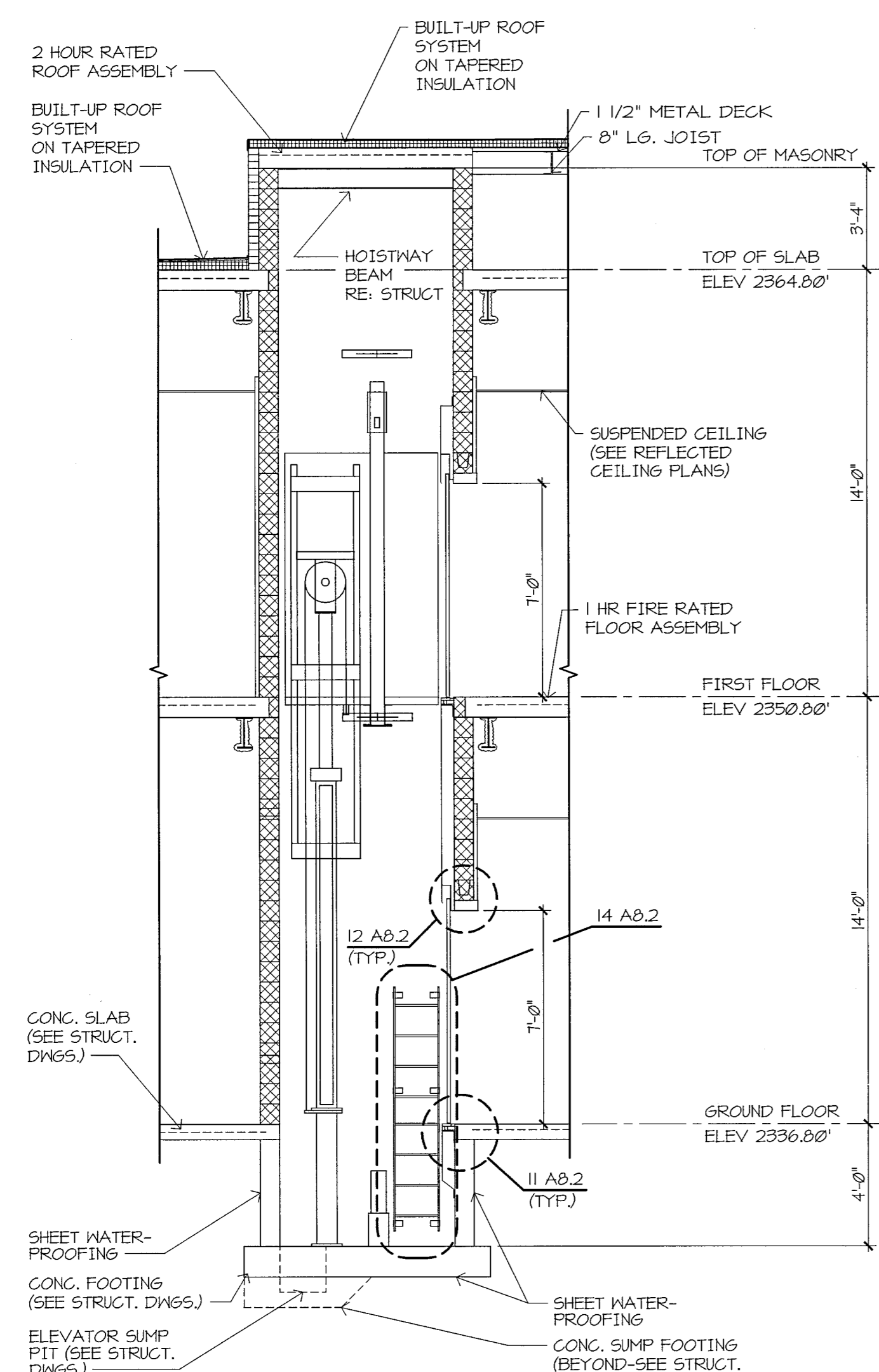
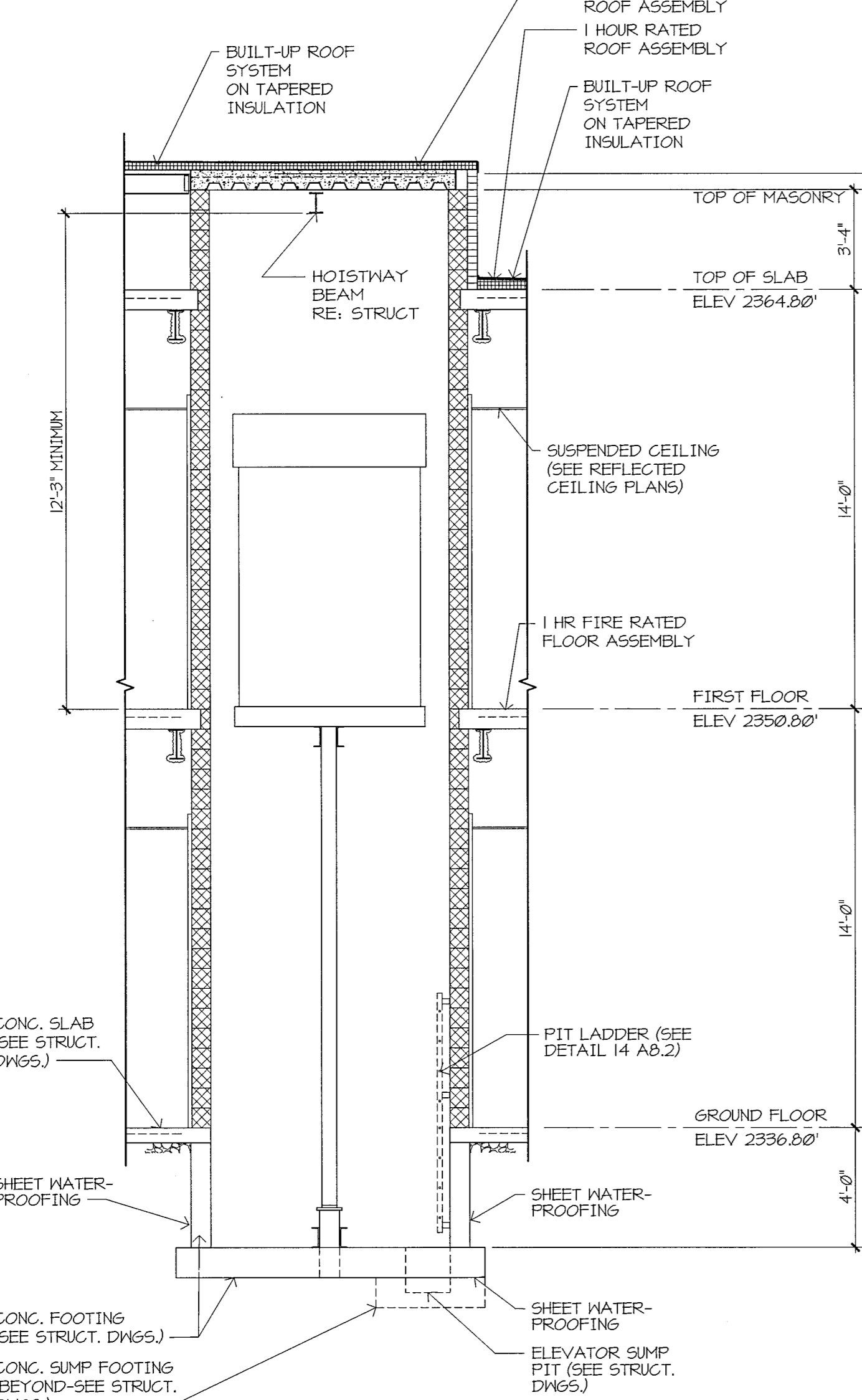


three inches = one foot
one and one half inches = one foot
one inch = one foot
one inch = one foot
three quarters inch = one foot
one half inch = one foot
one eighth inch = one foot
one quarter inch = one foot
one eighth inch = one foot



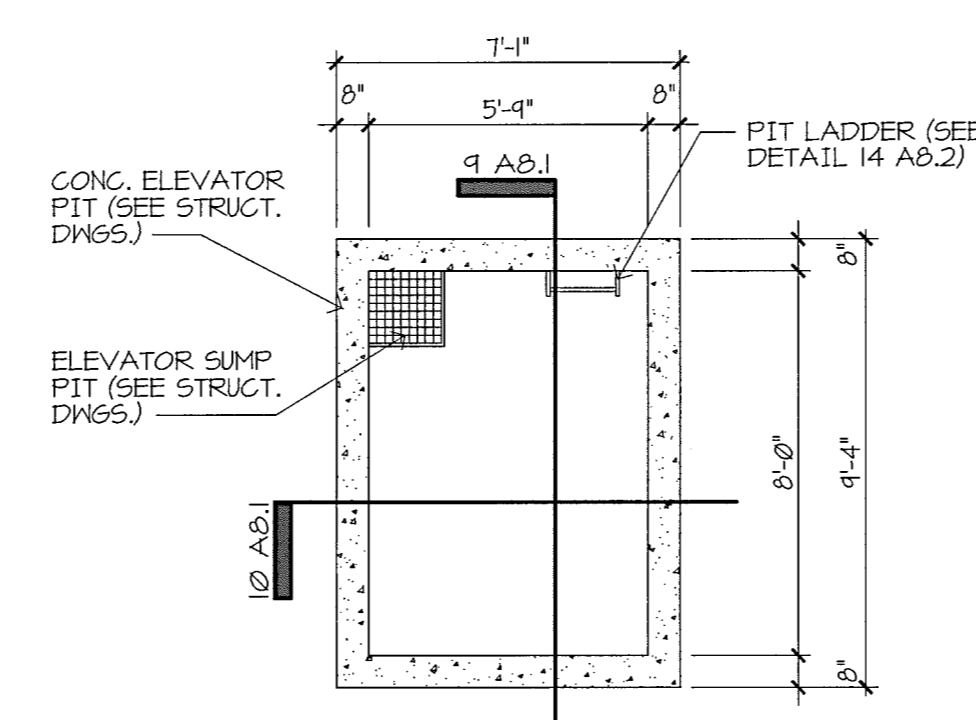
ELEVATOR SECTION - EAST TO WEST

1/4" = 1'-0"



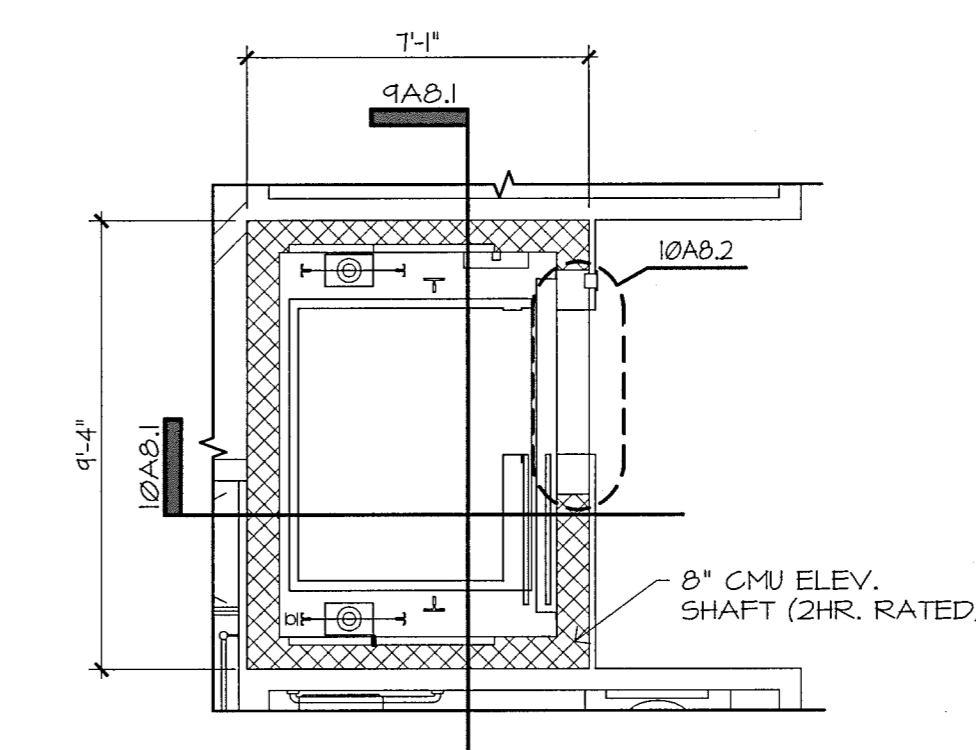
ELEVATOR SECTION - NORTH TO SOUTH

1/4" = 1'-0"



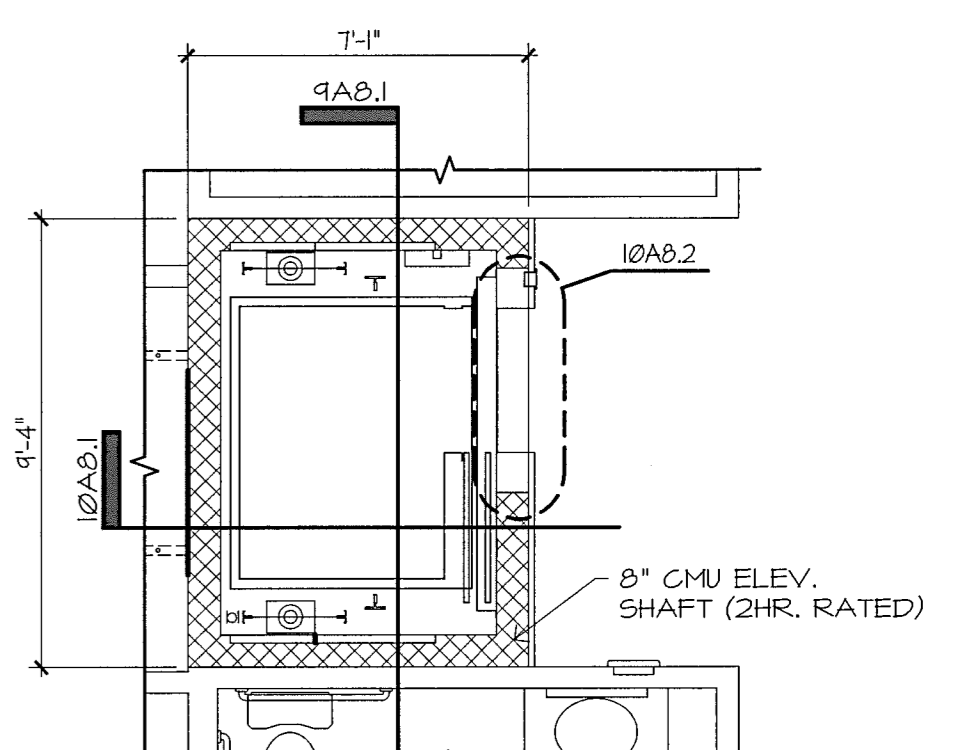
ELEVATOR PIT PLAN

1/4" = 1'-0"



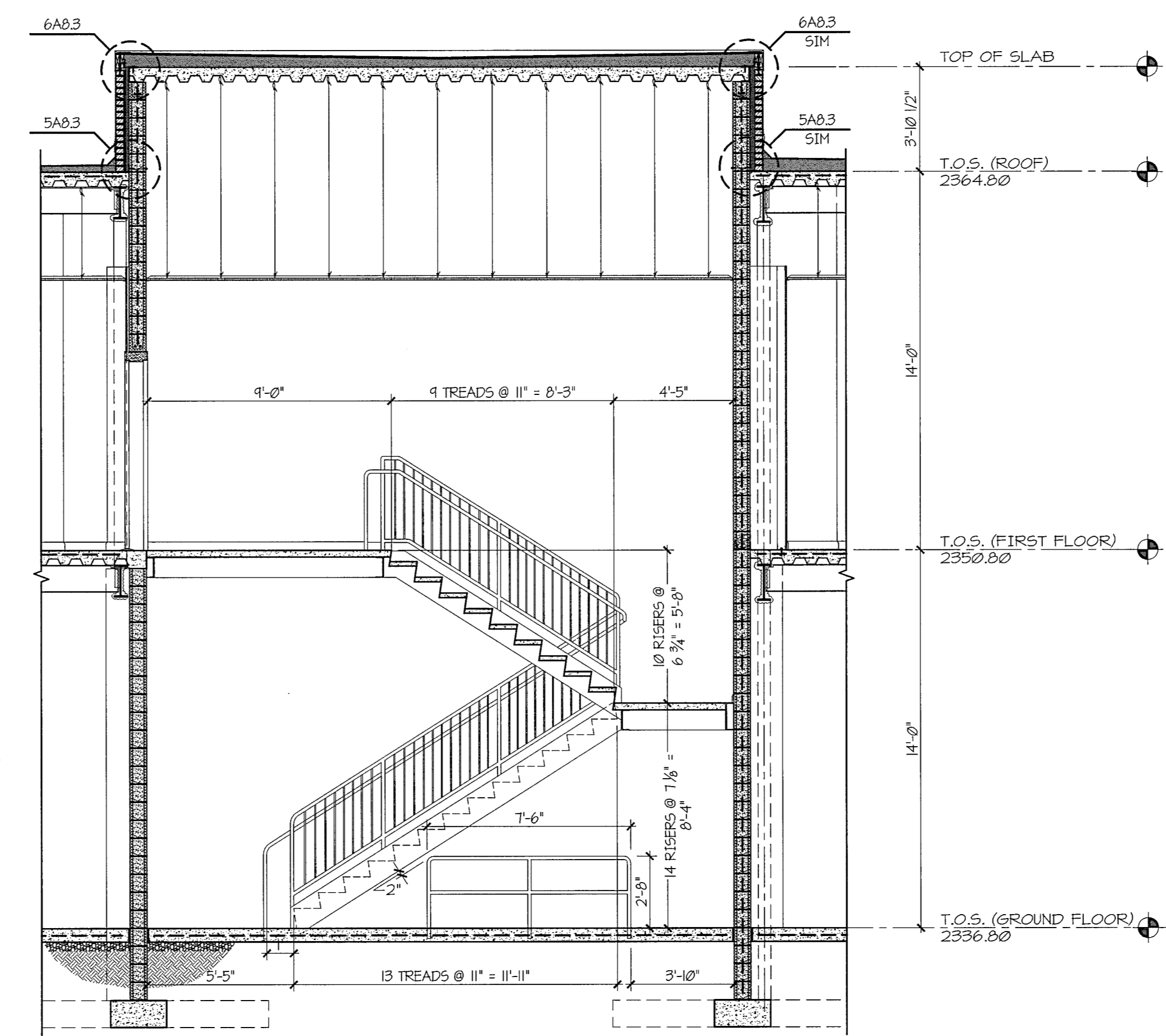
FIRST FLR. ELEV. PLAN

1/4" = 1'-0"



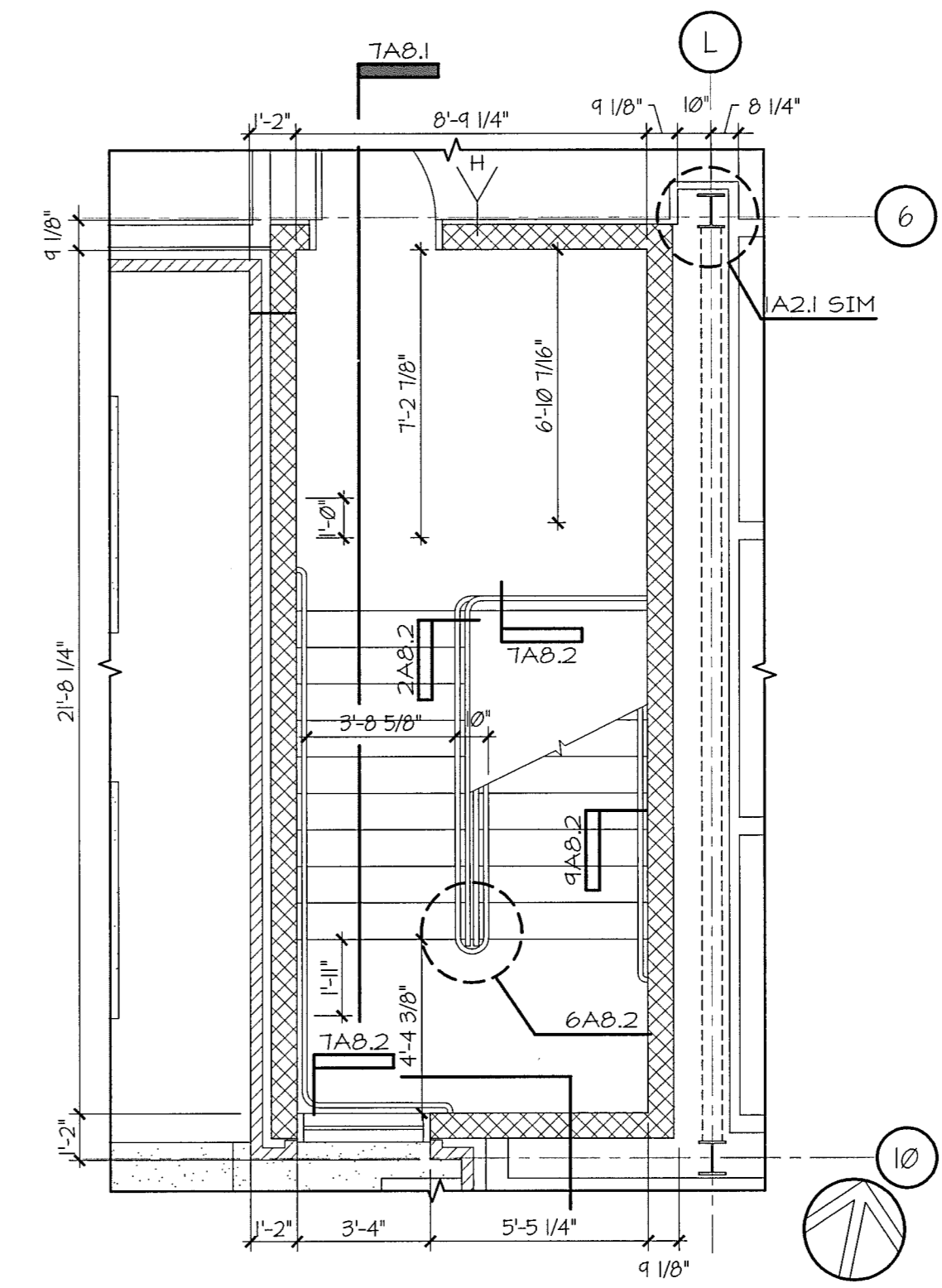
GRND. FLR. ELEV. PLAN

1/4" = 1'-0"



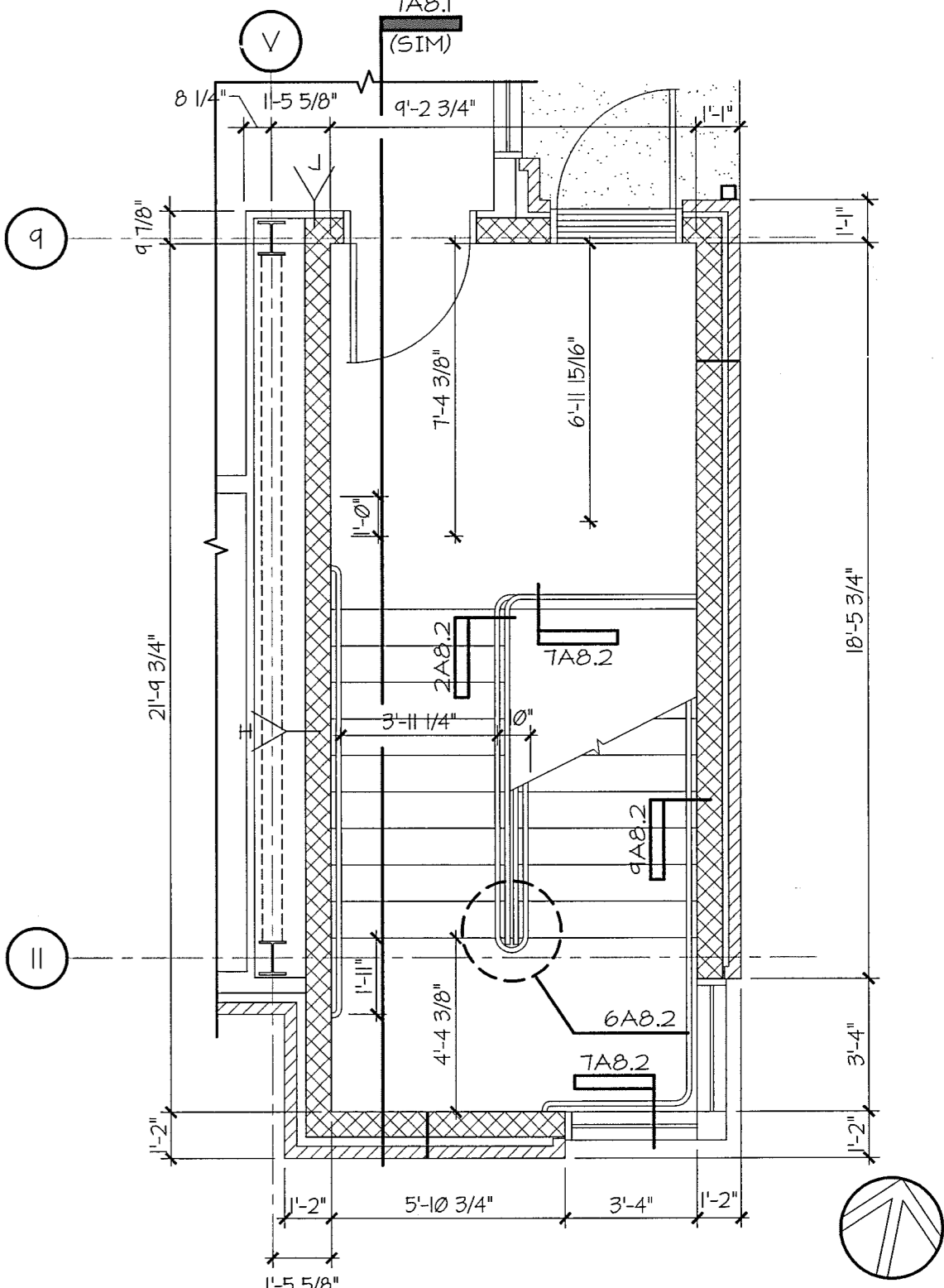
STAIR 1 AND 2 SECTION - NORTH TO SOUTH

1/4" = 1'-0"



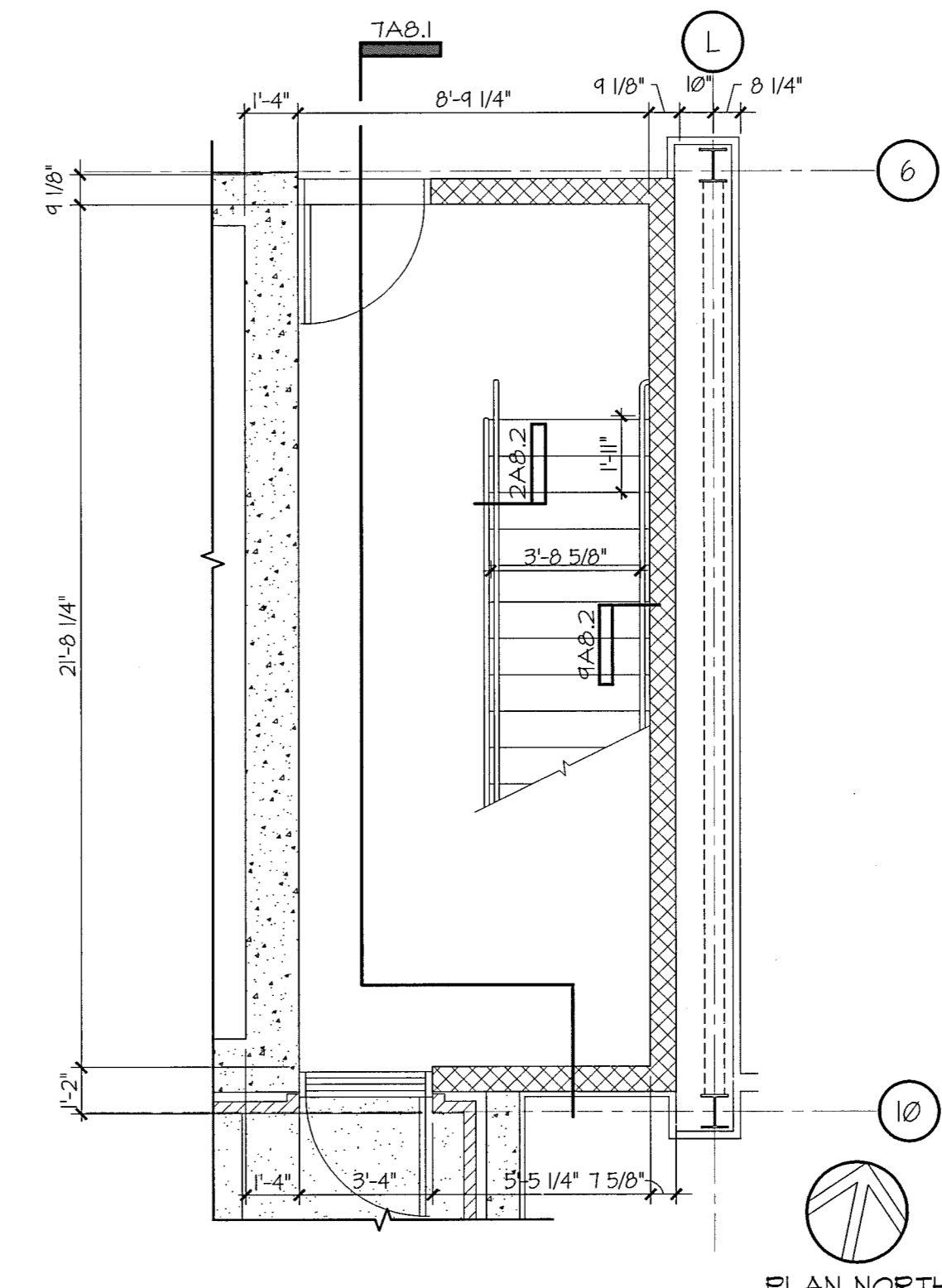
STAIR 1 - FIRST FLOOR

1/4" = 1'-0"



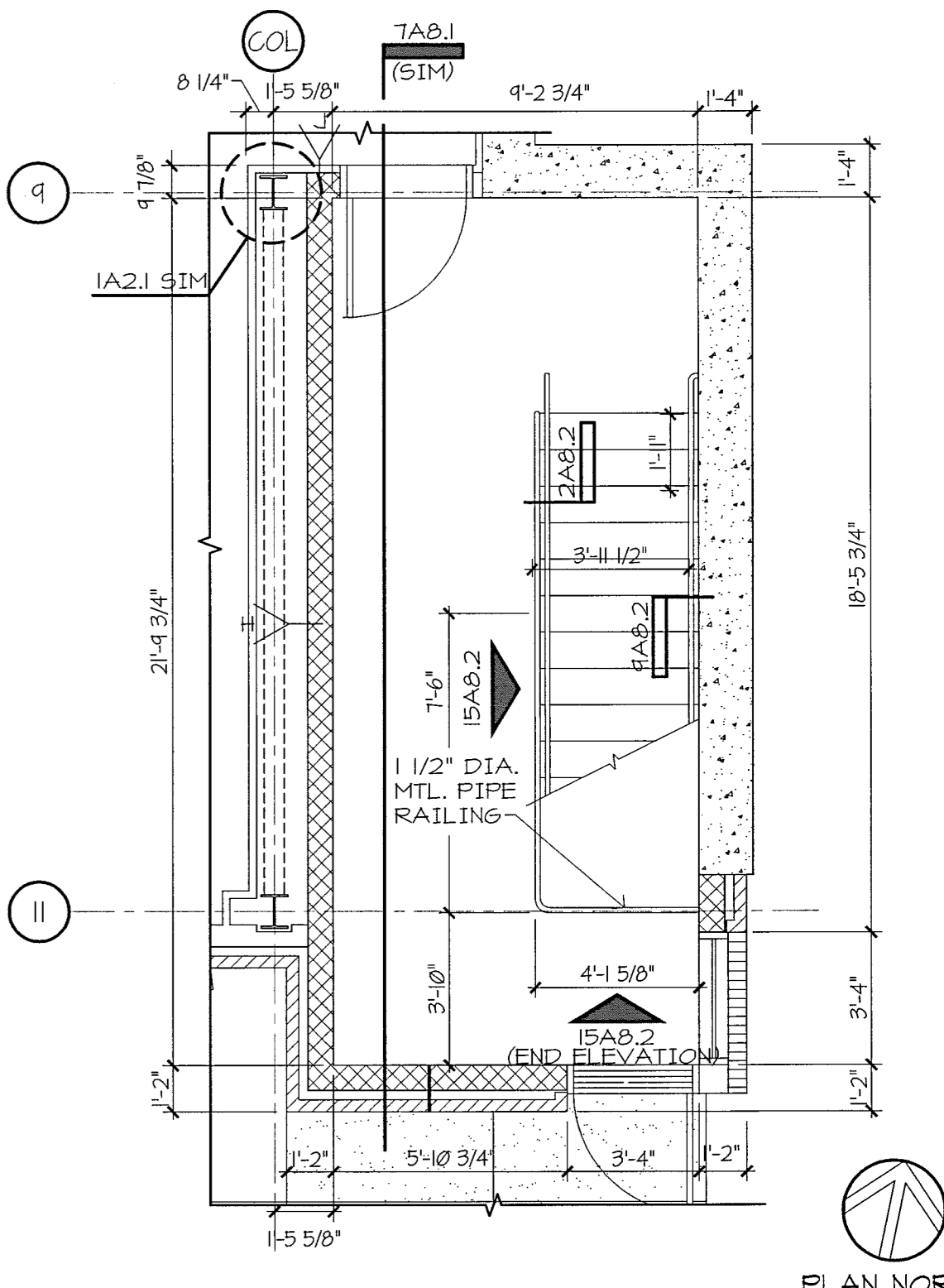
STAIR 2 - FIRST FLOOR

1/4" = 1'-0"



STAIR 1 - GROUND FLR.

1/4" = 1'-0"

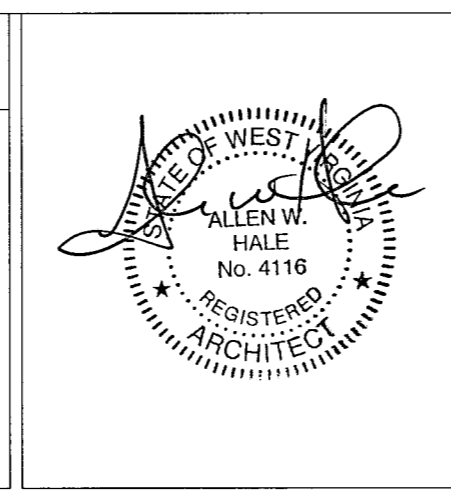


STAIR 2 - GROUND FLR.

1/4" = 1'-0"

| Revisions | Date |
|-----------|------|
| | |
| | |
| | |
| | |
| | |

| CONSULTANTS: |
|--------------|
| |
| |
| |
| |
| |



ARCHITECT/ENGINEERS:

SFCS Architecture Engineering Planning Interiors

SFCS Inc. • 305 South Jefferson Street
Roanoke, Virginia 24011.2003
540.344.6664 • Fax 540.343.6925
www.sfcs.com

ANDERSON & ASSOCIATES, INC.
Professional Design Services
180 Adams St.
Buckingham, VA 24000
940.521.6922
www.andassoc.com

| |
|---|
| Drawing Title STAIR AND ELEVATOR PLANS AND SECTIONS |
| Approved: Project Director |

| |
|--|
| Project Title Adult Day Care Building VA Medical Center Comm No. 10110.00 |
| Location Beckley, West Virginia |
| Date 08/05/2011 |
| Checked - |
| Drawn - |

| |
|--|
| Project Number VA246-P-0568 |
| Building Number - |
| Drawing Number A8.1 Dwg. 38 of 77 |

Office of Construction and Facilities Management

Department of Veterans Affairs