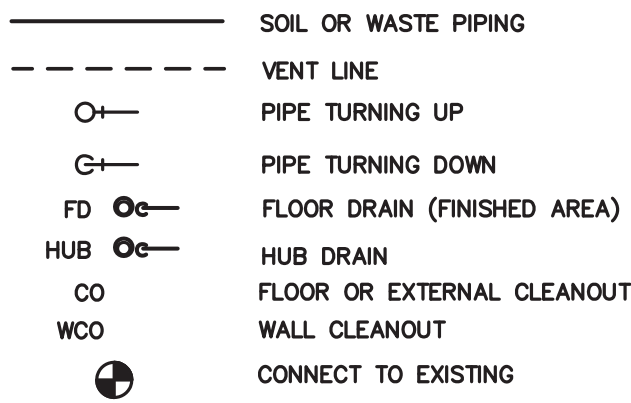


PLUMBING LEGEND

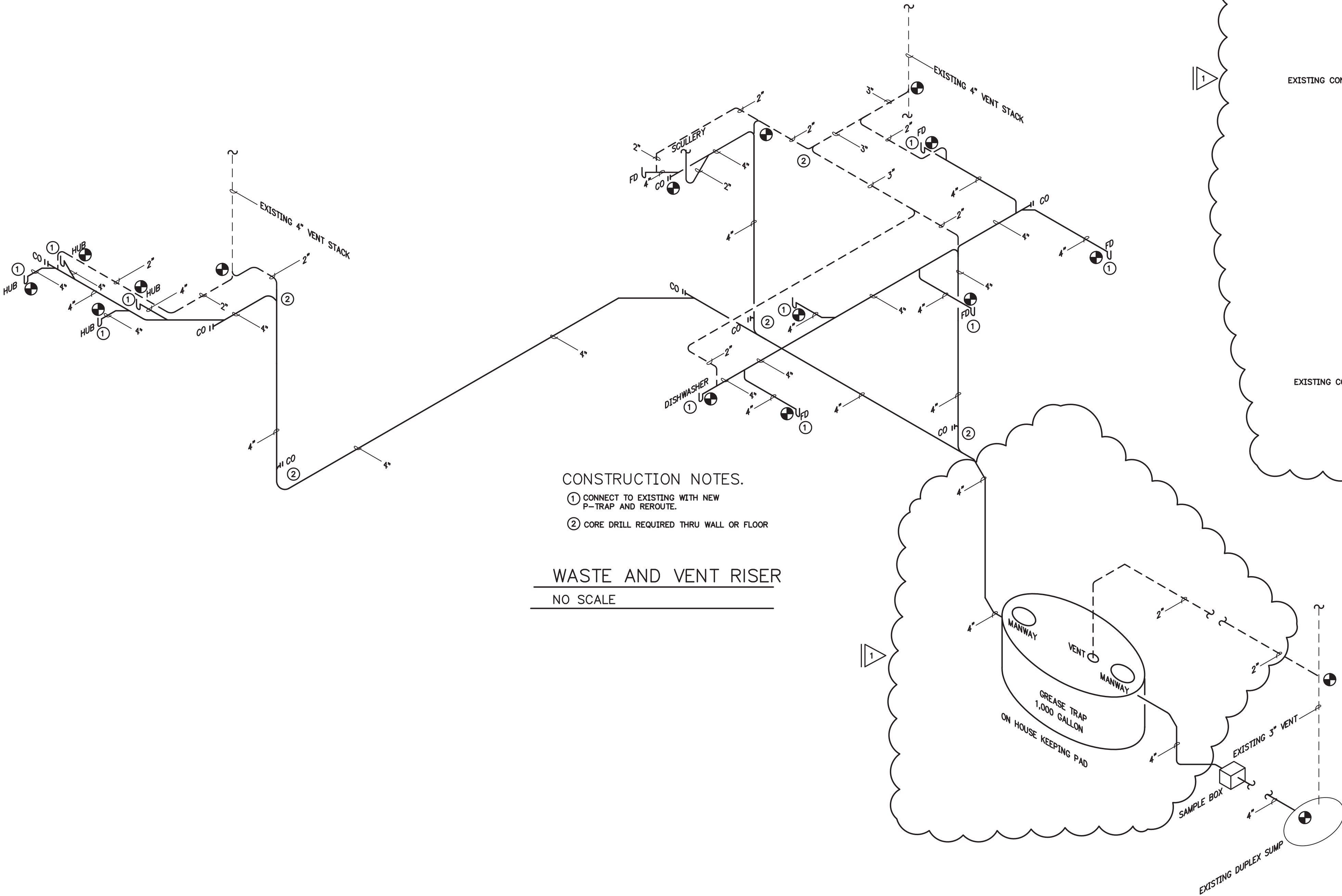


1. VERIFY EXISTING CONDITIONS IN FIELD PRIOR TO BEGINNING WORK.
2. OBTAIN PERMITS AND NOTIFY AUTHORITIES FOR INSPECTIONS.
3. PROVIDE 1 YEAR WARRANTY ON ALL WORK.
4. PROVIDE RECORD "AS-BUILT" PRINTS TO THE OWNER.
5. INSTALL FIRE-STOPPING FOR PENETRATIONS OF ALL RATED WALLS AND FLOORS.
6. REPAIR ALL AREAS DAMAGED BY PERFORMING OR REMOVING WORK UNDER THIS CONTRACT.
7. PERFORM WORK ACCORDING TO:
A. INTERNATIONAL MECHANICAL CODE (IMC)
B. INTERNATIONAL PLUMBING CODE (IPC)
C. SHEET METAL AND AIR CONDITIONING CONTRACTORS NATIONAL ASSOCIATION (SMACNA)
D. MANUFACTURER'S STANDARDIZATION SOCIETY OF THE VALVE AND FITTINGS INDUSTRY, INC. (MSS)
E. NATIONAL FIRE PROTECTION ASSOCIATION (NFPA 90A)

8. PLUMBING PIPING:
SANITARY, WASTE AND VENT PIPING
1. SANITARY WASTE AND VENT PIPING ABOVE GROUND SHALL BE NO-HUB SOIL PIPE, CISPI STANDARD 301 WITH COUPLING ASSEMBLY CISPI STANDARD 310. HORIZONTAL PIPING FOR FIXTURE ROUGH-INS MAY BE DNV COPPER, ASTM B-306.
2. FITTINGS ABOVE GROUND SHALL BE NO-HUB CAST IRON SOIL PIPE FITTINGS WITH COUPLING ASSEMBLY CISPI STANDARD 310. COUPLINGS SHALL BE HEAVY DUTY AND RATED FOR ELEVATED TEMPERATURE.
UNIONS
1. SOLDER UNIONS SHALL BE WROT COPPER, WITH COPPER GROUND JOINT. ASTM B75, ANSI B16.22. DIELECTRIC, EPSO, 250 LB. WOG.
2. SOLDER METAL SHALL CONFORM TO ASTM B32-ALLOY GRADE 95TA: 95 PERCENT TIN, 5 PERCENT ANTIMONY. JOINTS SHALL BE MADE WITH APPROVED SOLDER CONTAINING NOT MORE THAN 0.2 PERCENT LEAD.

PLUMBING SPECIFICATIONS

9. INSULATION:
INSULATE BODY OF FLOOR DRAIN, FLOOR SINK, OR HUB DRAIN. WITH ARMAFLEX INSULATION.
10. PIPE HANGERS AND SUPPORT:
1. ADJUSTABLE STEEL CLEVIS HANGER AND THREADED ROD SUPPORTED FROM STEEL JOIST OR BEAM.
2. HANGER SYSTEM: GRINNELL OR B-LINE.
11. LABELING
PROVIDE LABELS FOR SANITARY WASTE AND VENT.
12. TESTING
1. SANITARY WASTE AND VENT PIPING SHALL BE TESTED IN ACCORDANCE WITH WATER AND AIR TESTS AS SPECIFIED IN THE INTERNATIONAL PLUMBING CODE, IN ADDITION TO ANY TESTS REQUIRED BY THE LOCAL PLUMBING OFFICIAL. (10 FEET OF HEAD WITH NO APPARENT LEAKS. HOLD FOR 30 MINUTES MINIMUM). FLUSH ALL GRAVITY PIPING INCLUDING FLOOR DRAINS PRIOR TO TURNING OVER TO THE OWNER.



- CONSTRUCTION NOTES.
1. CONNECT TO EXISTING WITH NEW P-TRAP AND REROUTE.
2. CORE DRILL REQUIRED THRU WALL OR FLOOR

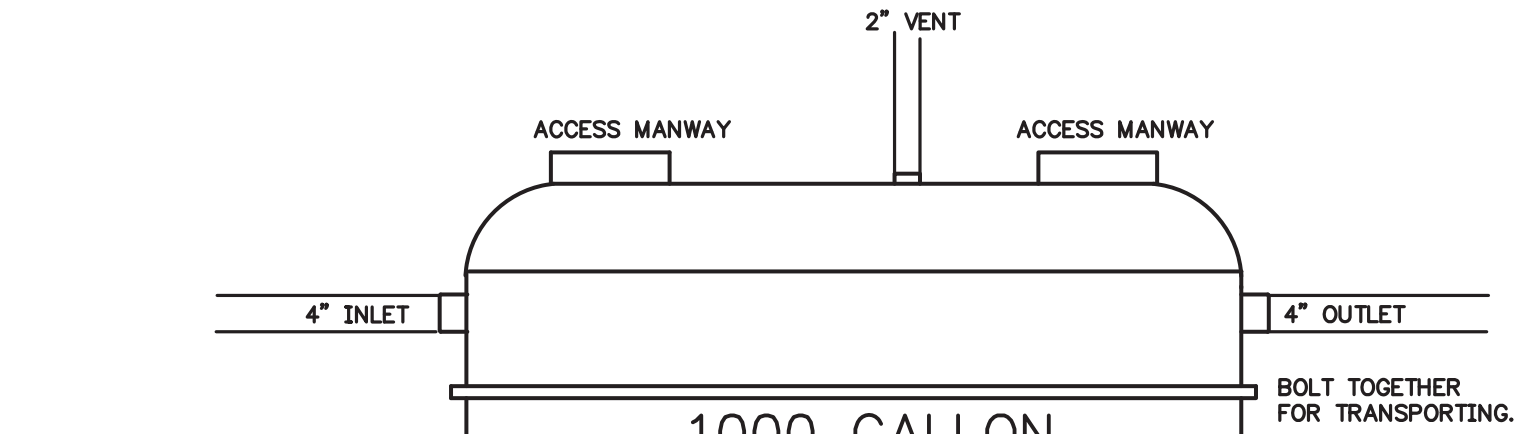
WASTE AND VENT RISER
NO SCALE

GREASE INTERCEPTOR

ITEM	DESCRIPTION	FLOW GPM	WASTE (IN.)	VENT (IN.)	REMARKS
G INT	PROCEPTOR GMC-1000-UPC SYSTEM 3	200	4	2	577 GALLON GREASE HOLDING CAPACITY SYSTEM 3 UNIT WITH TWIN MANWAYS AND INTERNAL CLEANOUTS.

NOTE: INTERCEPTOR SHALL BE TWO PIECE BOLT TOGETHER FOR TRANSPORT THROUGH EXISTING BUILDING. THE TWO PIECE UNIT IS A FACTORY OPTION.

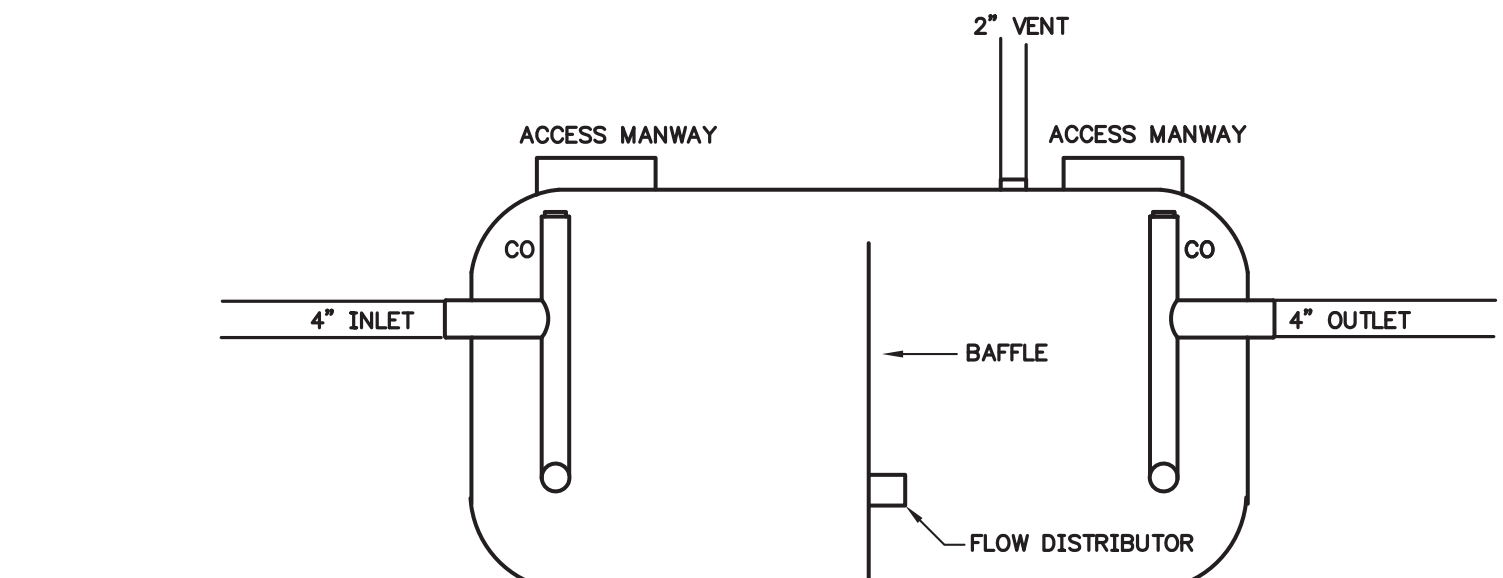
REP CONTACT: BILL CONE AT VCM SALES (205) 324-0669



PROCEPTOR GREASE INTERCEPTOR

NO SCALE

REFER TO MANUFACTURER'S DATA SHEETS AND DETAILS FOR INSTALLATION PROCEDURES.



PROCEPTOR GREASE INTERCEPTOR

NO SCALE

REFER TO MANUFACTURER'S DATA SHEETS AND DETAILS FOR INSTALLATION PROCEDURES.

CALCULATED FLOW SYSTEM

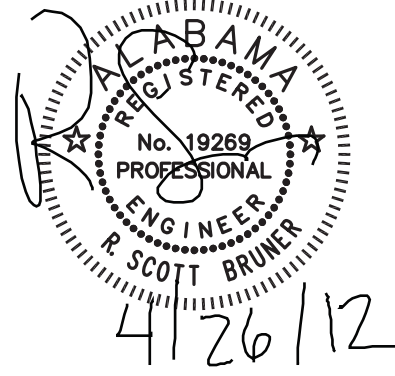
BASED ON PDI-G101 SIZING STANDARD AND METHODS

FIXTURE TYPE	NUMBER	VOLUME GALLONS	FLOW PERIOD	FLOW GPM EACH	TOTAL FLOW GPM	GREASE INTERCEPTOR FLOW RATE REQUIRED
TWO COMP SINK	1	90 TOTAL	2 MINUTES	45	45	192 GPM FLOW TOTAL MINIMUM
FLOOR DRAIN	6	----	10% DIVERSITY	45	27	
ISLAND HUB	4	----	50% DIVERSITY	45	90	
DISHWASHER	1	----	----	30	30	

C.R.S.

Engineering and Design Consultants™
3504 7th Avenue South
Birmingham AL 35222
P:205-323-2373 F:205-322-2731
web: www.crsegr.com

SEAL:



MECHANICAL RENOVATIONS TO:

VAMC BIRMINGHAM

BIRMINGHAM, ALABAMA

TITLE:

DATE: 05-10-06

NOT FOR CONSTRUCTION
RELEASED FOR CONSTRUCTION

REV DESCRIPTION DATE
1 JEFF CO COMMENT 4-25-12

JOB NUMBER: 12046

DRAWN BY: CF

CHECKED BY: RSB

CAD FILE: 12046W01.dwg

SHEET TITLE:

PLUMBING SCHEDULES
DETAILS, NOTES,
RISERS,
SPECIFICATION

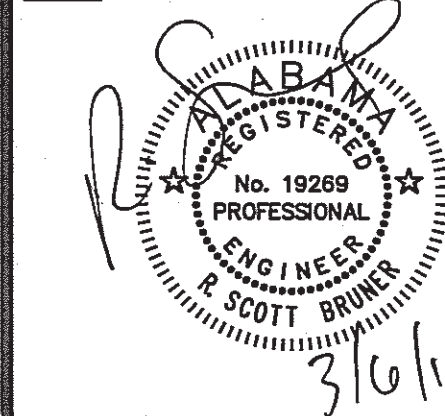
SHEET NUMBER:

P0.00

C·R·S

Engineering and
Design Consultants
3504 7th Avenue South
Birmingham AL 35222
P:205-323-2373 F:205-322-2731
web: www.crsegr.com

SEAL:



MECHANICAL RENOVATIONS TO:

VAMC BIRMINGHAM

BIRMINGHAM, ALABAMA

TITLE:

DATE: 03-06-12

NOT FOR CONSTRUCTION
RELEASED FOR CONSTRUCTION ☐

REV	DESCRIPTION	DATE

JOB NUMBER: 12046

DRAWN BY: CF

CHECKED BY: RSB

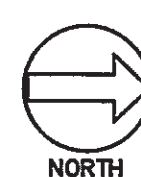
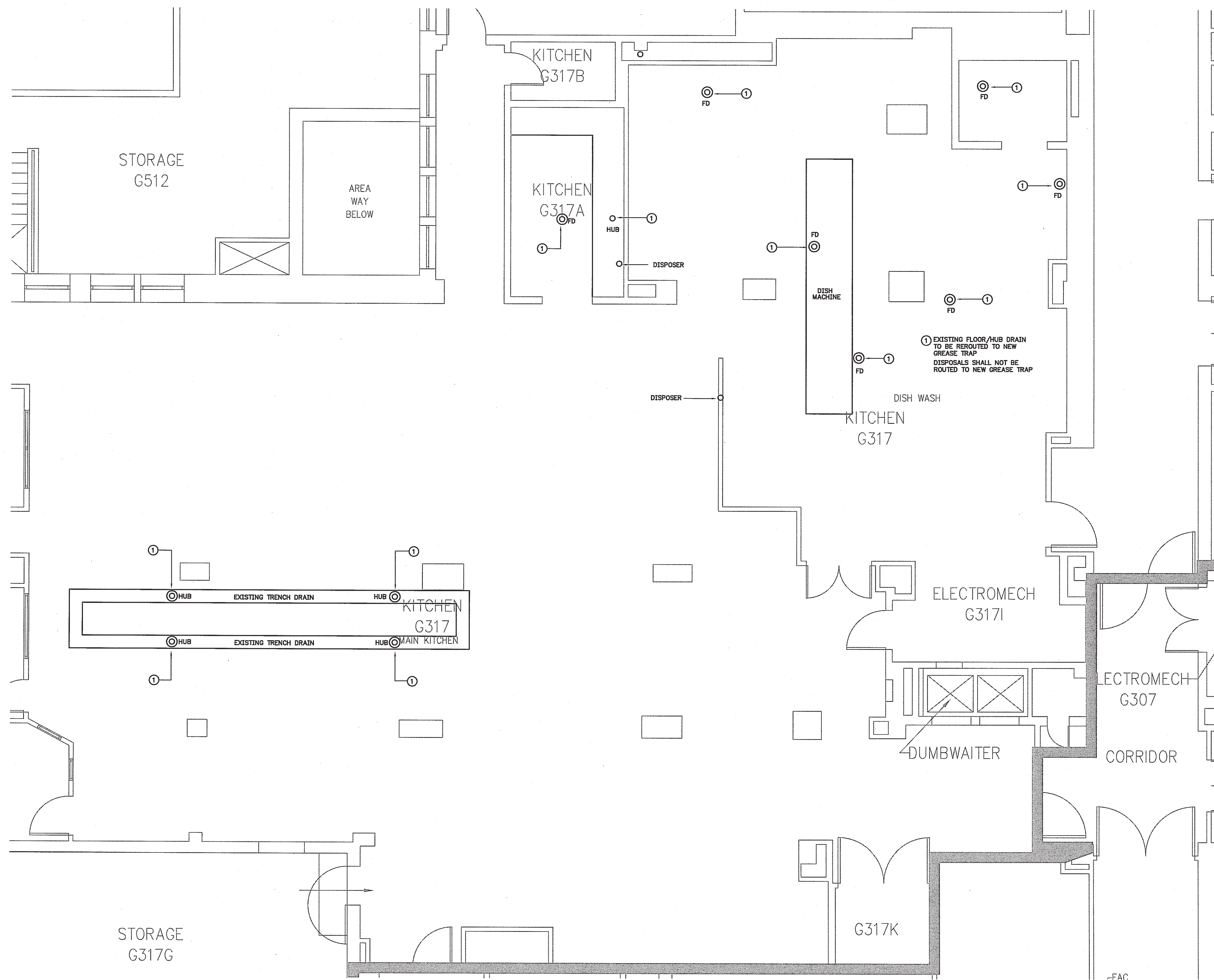
CAD FILE: 12046U01.dwg

SHEET TITLE:

GROUND FLOOR PLAN
PLUMBING

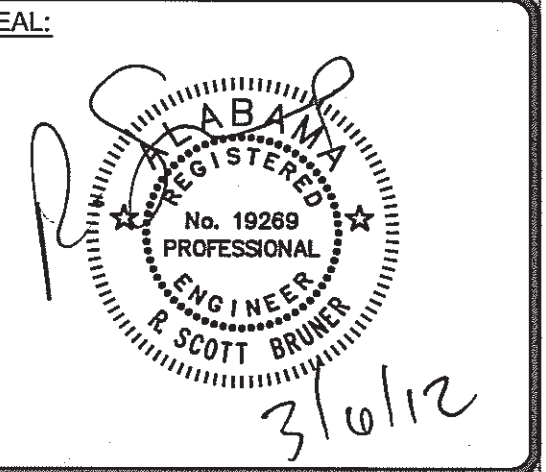
SHEET NUMBER:

P1.01



GROUND FLOOR PLAN
PLUMBING

0 1 2 3 4 8
SCALE: 1/4" = 1'-0"



MECHANICAL RENOVATIONS TO:

VAMC BIRMINGHAM

BIRMINGHAM, ALABAMA

TITLE:

DATE: 03-06-12

NOT FOR CONSTRUCTION
RELEASED FOR CONSTRUCTION

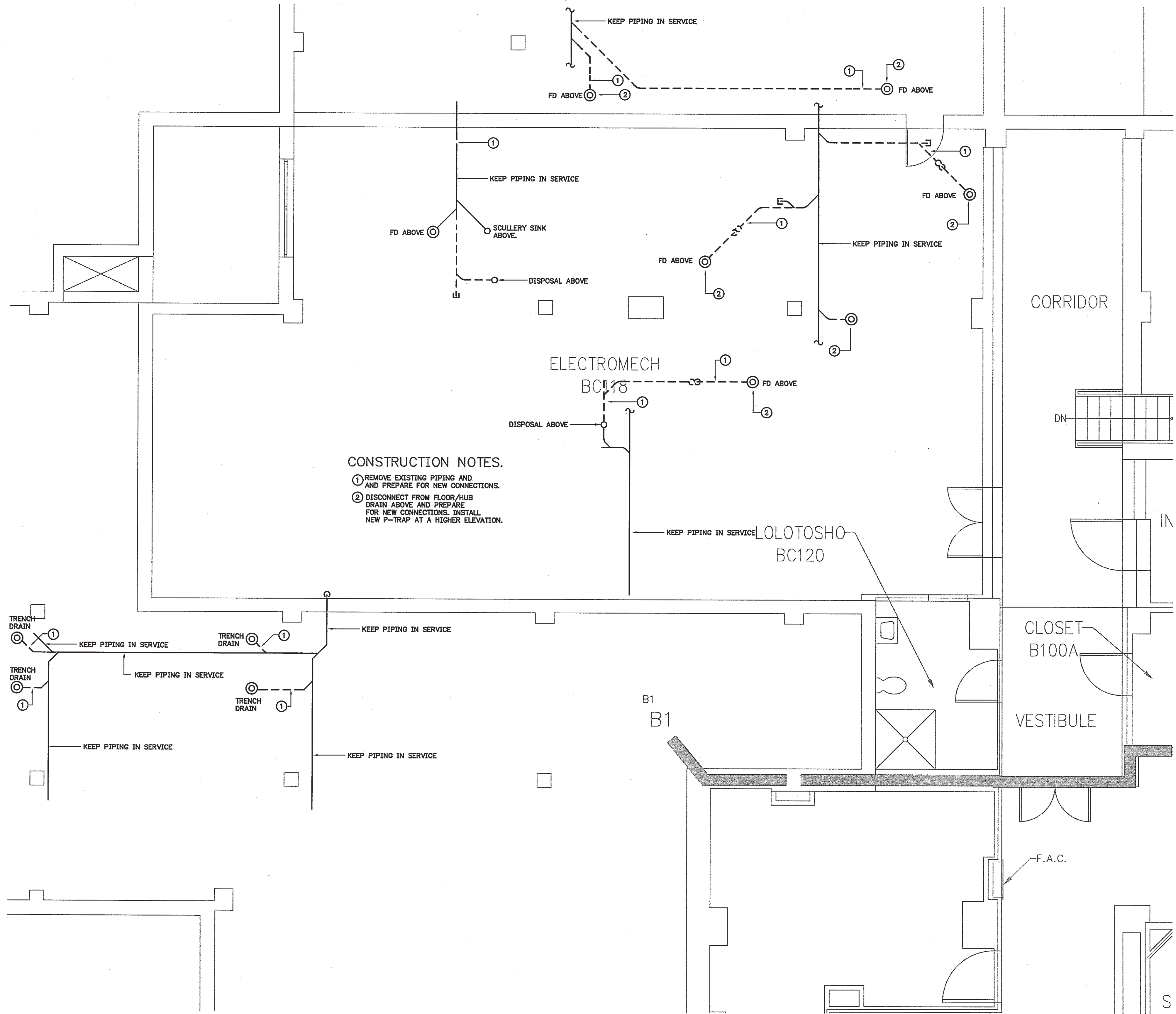
REV	DESCRIPTION	DATE

JOB NUMBER: 12046
DRAWN BY: CF
CHECKED BY: RSB
CAD FILE: 12046U02.dwg

SHEET TITLE:
BASEMENT FLOOR
PLAN
PLUMBING DEMOLITION

SHEET NUMBER:

P2.01



CONSTRUCTION NOTES.
① REMOVE EXISTING PIPING AND
AND PREPARE FOR NEW CONNECTIONS.
② DISCONNECT FROM FLOOR/HUB
DRAIN ABOVE AND PREPARE
FOR NEW CONNECTIONS. INSTALL
NEW P-TRAP AT A HIGHER ELEVATION.

BASEMENT FLOOR PLAN
PLUMBING DEMOLITION
NORTH
0 1 2 3 4 8
SCALE: 1/4" = 1'-0"

VAMC BIRMINGHAM

BIRMINGHAM, ALABAMA

TITLE:

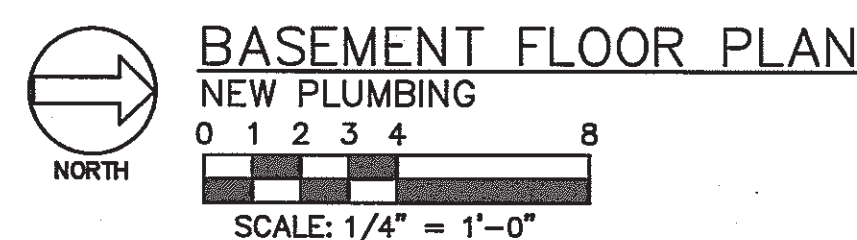
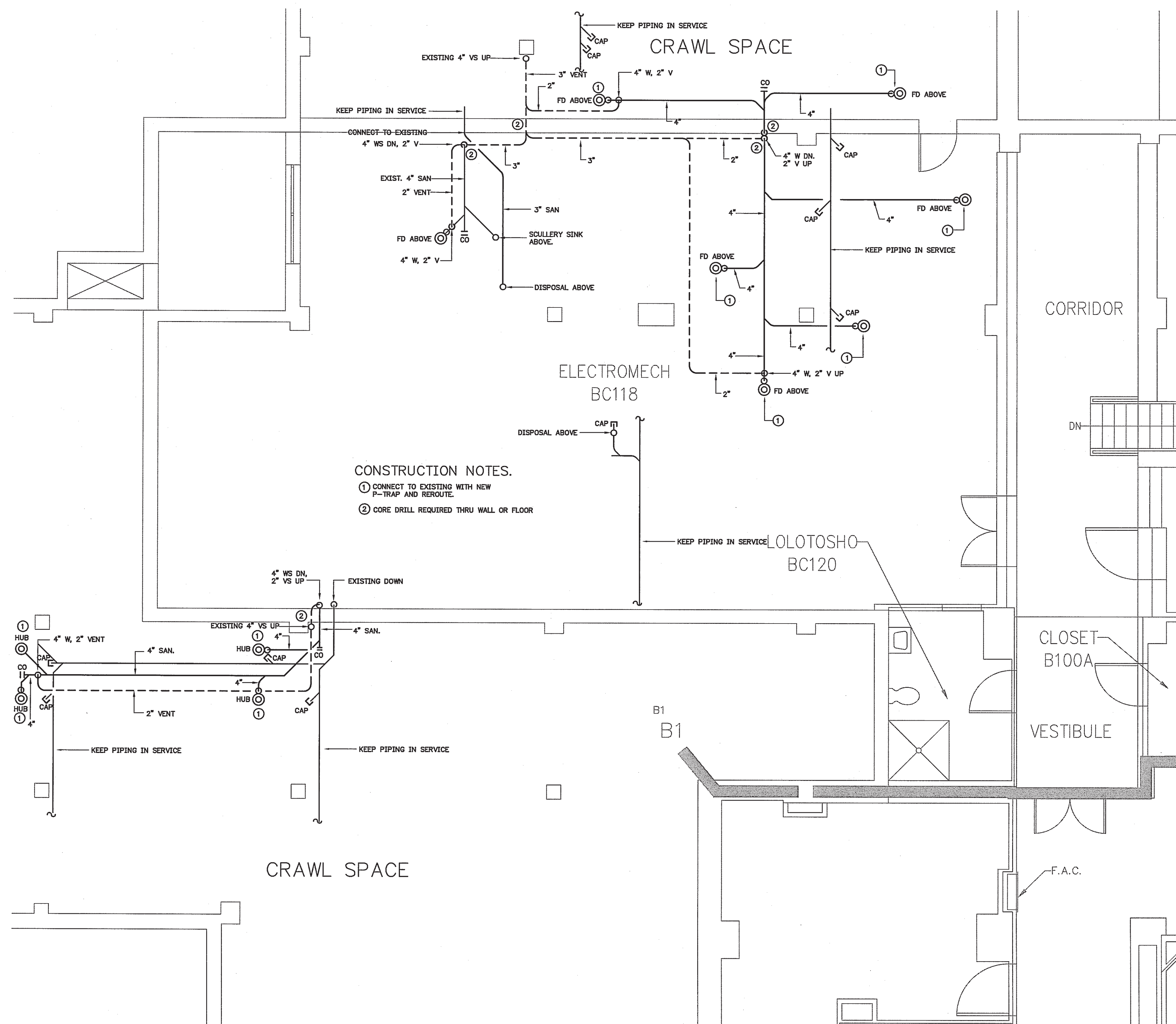
NOT FOR CONSTRUCTION
RELEASED FOR CONSTRUCTION

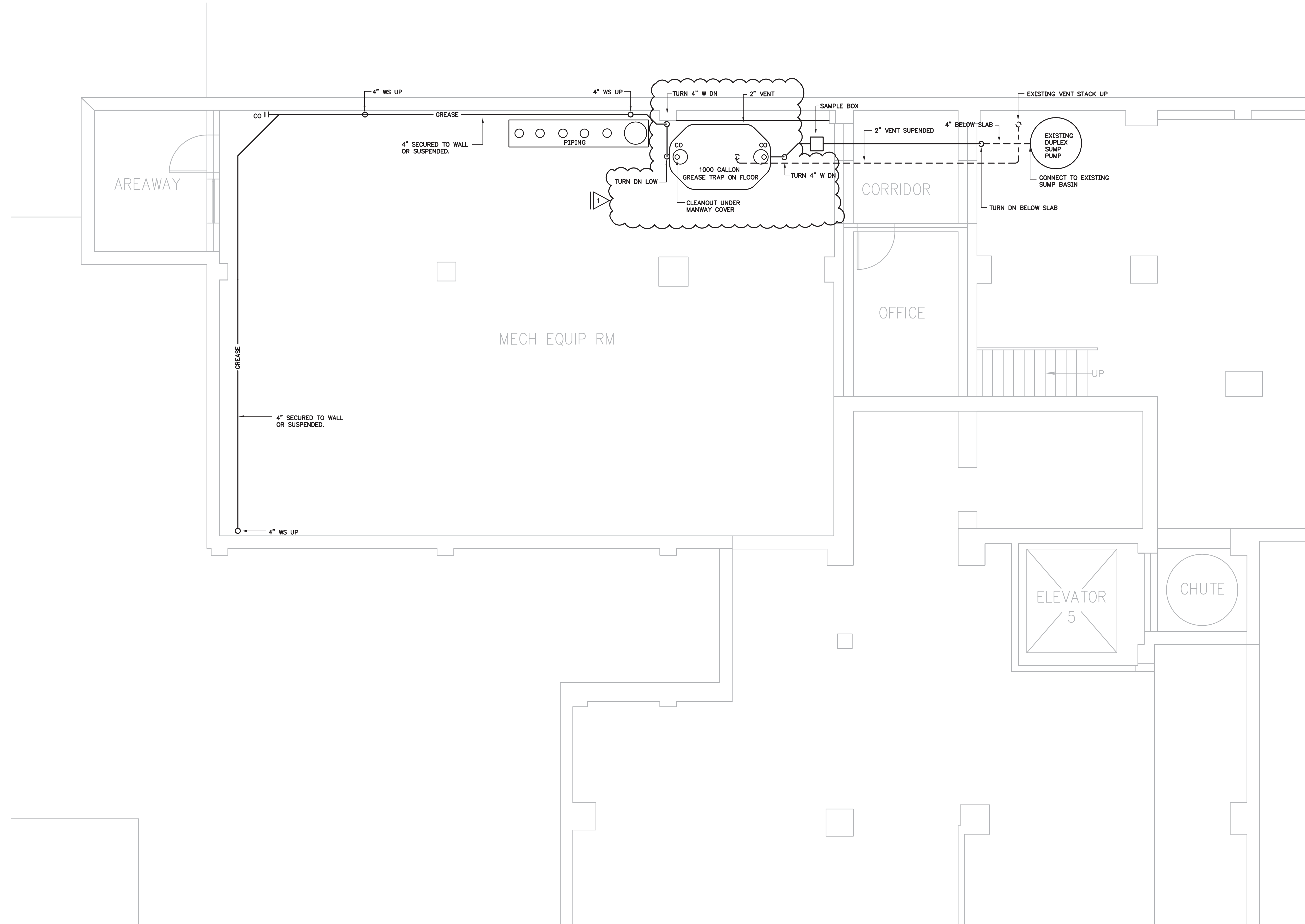
[illegible]

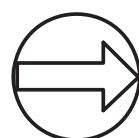
JOB NUMBER:	12046
DRAWN BY:	XXX
CHECKED BY:	RSB
CAD FILE:	12046U02.dwg

SHEET TITLE:
BASEMENT FLOOR
PLAN
NEW PLUMBING

P2.02






NORTH

SUB-BASEMENT FLOOR PLAN
GRAVITY

0 1 2 3 4 8

SCALE: 1/4" = 1'-0"

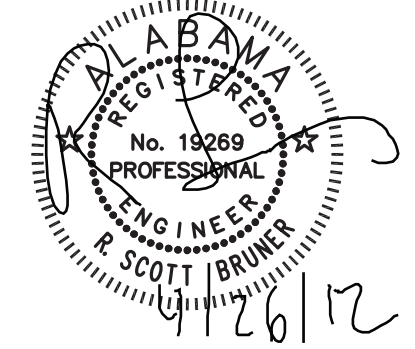
C·R·S

▲ ■ ● ▲ ■ ● ▲ ■

Engineering and
Design Consultants™

3504 7th Avenue South
Birmingham AL 35222
P:205-323-2373 F:205-322-2731
web: www.crsegr.com

SEAL:



MECHANICAL RENOVATIONS TO:

VAMC BIRMINGHAM

BIRMINGHAM, ALABAMA

TITLE:

DATE:		05-10-06
NOT FOR CONSTRUCTION		<input type="checkbox"/>
RELEASED FOR CONSTRUCTION		<input checked="" type="checkbox"/>
REV	DESCRIPTION	DATE
1	JEFF CO COMMENT	4-25-12
JOB NUMBER:		12046
DRAWN BY:		CF
CHECKED BY:		RSB
CAD FILE:		12046U03.dwg

SHEET TITLE:

SUB-BASEMENT
FLOOR PLAN
GRAVITY

SHEET NUMBER:

P3.01