

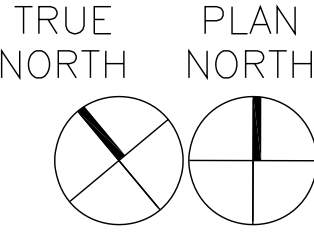
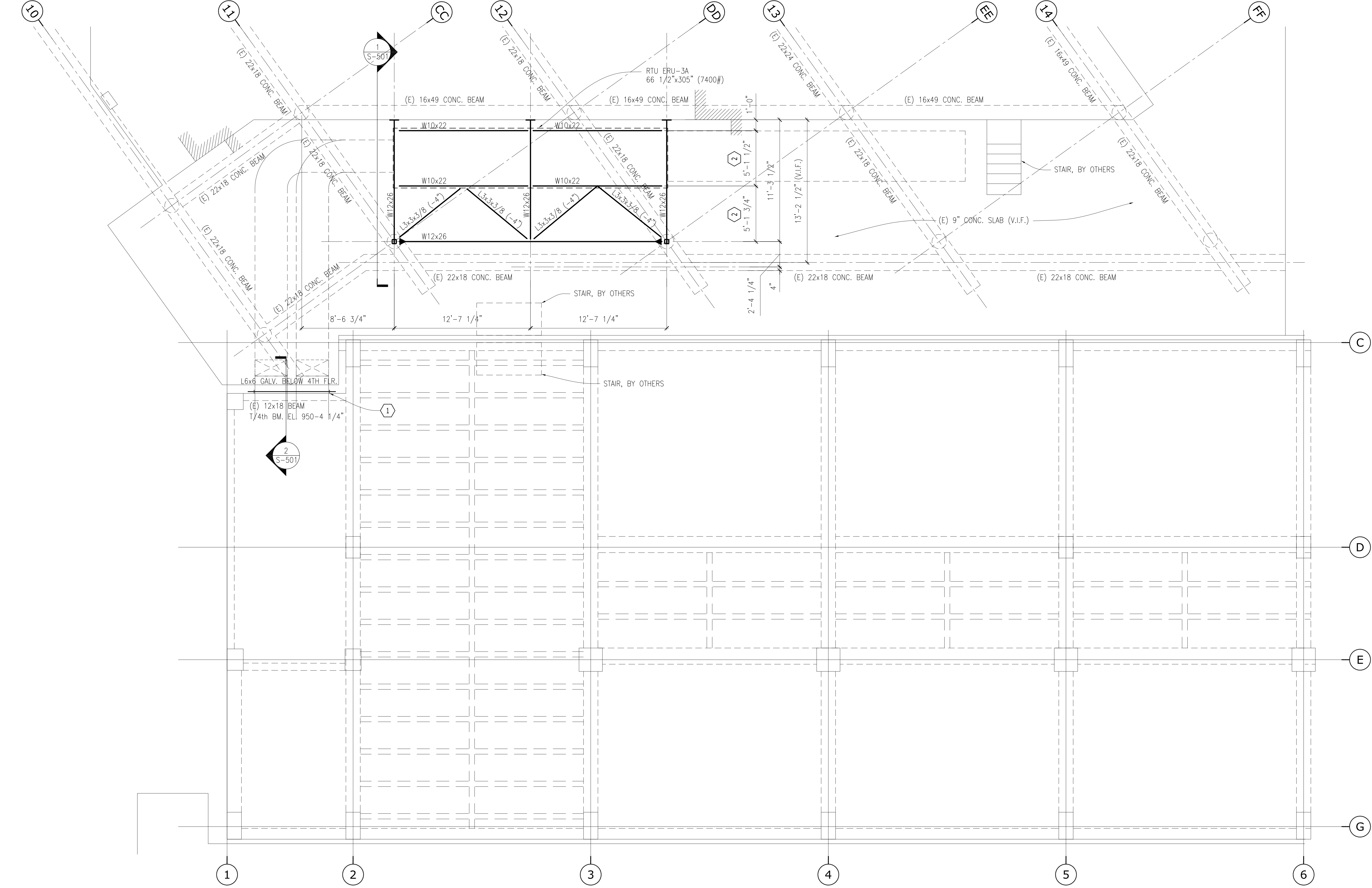
100% CONSTRUCTION DOCUMENTS - 11/04/2016

GENERAL SHEET NOTES

- A. ALL STEEL SHALL BE GALVANIZED
B. TOP OF STEEL SHALL BE 6" BELOW TOP OF EXISTING PARAPET.
INDICATES MOMENT CONNECTION

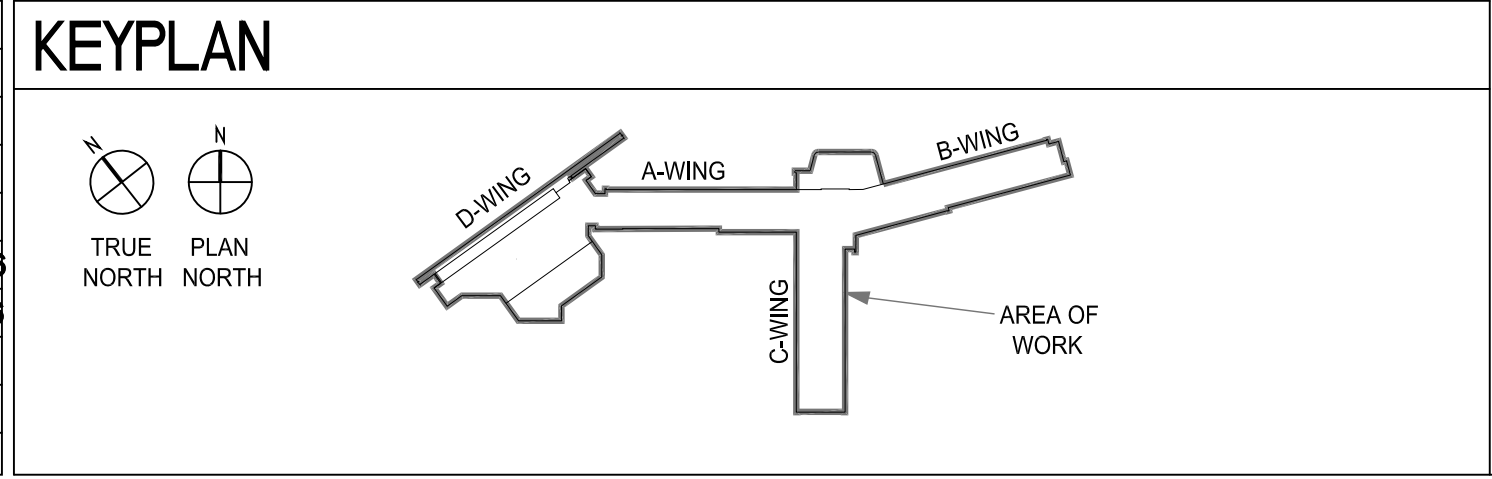
ROOF KEY NOTES

1. L6x6x3/8 (GALV.) W/ 1/2" HILT RE500 SD W/ 4 1/4" EMBED. @ 12" O.C. SEE SECTION 2/S-501. VERIFY IN FIELD EDGE OF BRICK VENEER AND ADJUST OUTSTANDING LEG OF ANGLE TO BE FLUSH WITH VENEER EDGE.
2. STEEL FRAMING TO ALIGN WITH ROOF TOP UNIT CURB CENTERLINE. ADJUST LOCATION AS REQUIRED BASED ON ROOF TOP UNIT SUBMITTALS.



2A WING - ENLARGED PARTIAL STRUCTURAL FRAMING PLAN

100% CONSTRUCTION DOCUMENT SUBMITTAL	11/04/2016
95% CONSTRUCTION DOCUMENT SUBMITTAL	07/06/2016
65% CONSTRUCTION DOCUMENT SUBMITTAL	04/27/2016
35% DESIGN DEVELOPMENT	02/18/2016
25% SCHEMATIC DESIGN SUBMITTAL	8/3/2015
Revisions:	Date



ENGINEERS + CONSULTANTS:

JOHNSONWILBUR ADAMS, INC.
STRUCTURAL ENGINEERING
175 N. Washington St.
Wheaton, Illinois 60187
Telephone 630-653-9060
Fax 630-653-9059
www.jwase.com

ARCHITECT + ENGINEERS:

Bancroft
BANCROFT ARCHITECTS + ENGINEERS
700 Nicholas Blvd., Suite 403
Elk Grove Village, IL 60007
T: 847.952.9362 F: 847.952.9403

Drawing Title
ROOF EQUIPMENT STRUCTURAL FRAMING PLAN

Approved Project Director

Project Title
RENOVATE 3A + 3C FOR AMBULATORY CARE

Location
WILLIAM S. MIDDLETON VA HOSPITAL
MADISON, WI

Date
11/04/2016

Checked

Drawn

Project Number
607-14-106

Building Number
1

Drawing Number
S-101

Office of
Construction
and Facilities
Management

Department of
Veterans Affairs

A

1

2

3

4

5

6

7

three inches = one foot
one and one half inches = one foot
one inch = one foot
three quarters inch = one foot
one half inch = one foot
three eighths inch = one foot
one quarter inch = one foot
one eighth inch = one foot
one sixteenth inch = one foot

A

1

2

3

4

5

6

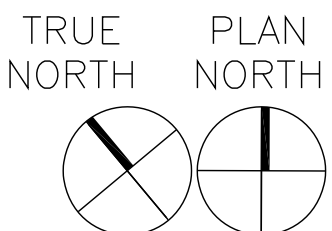
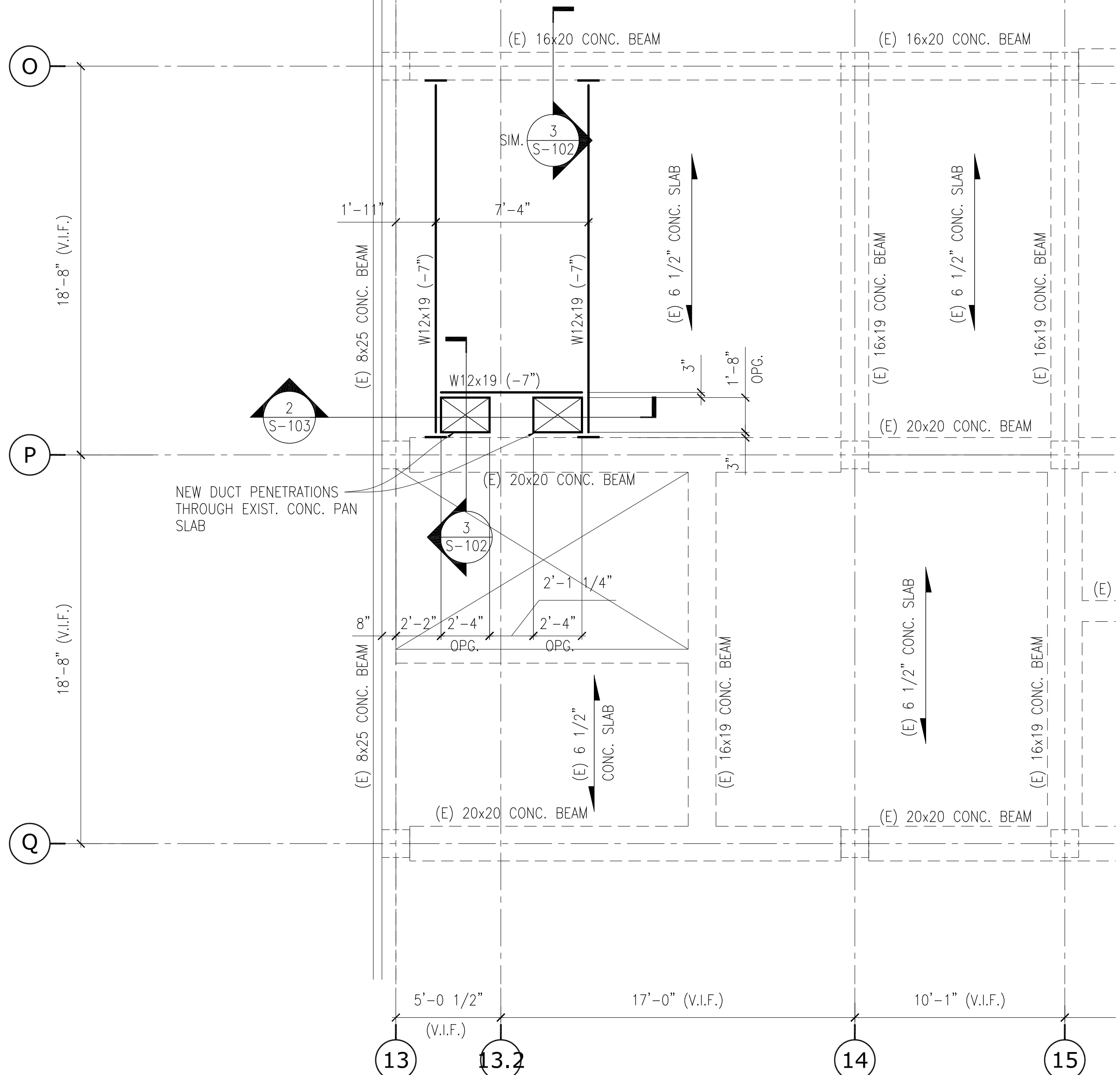
7

GENERAL SHEET NOTES

A. ALL STEEL SHALL BE GALVANIZED

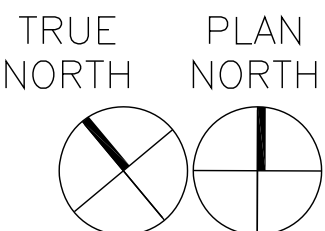
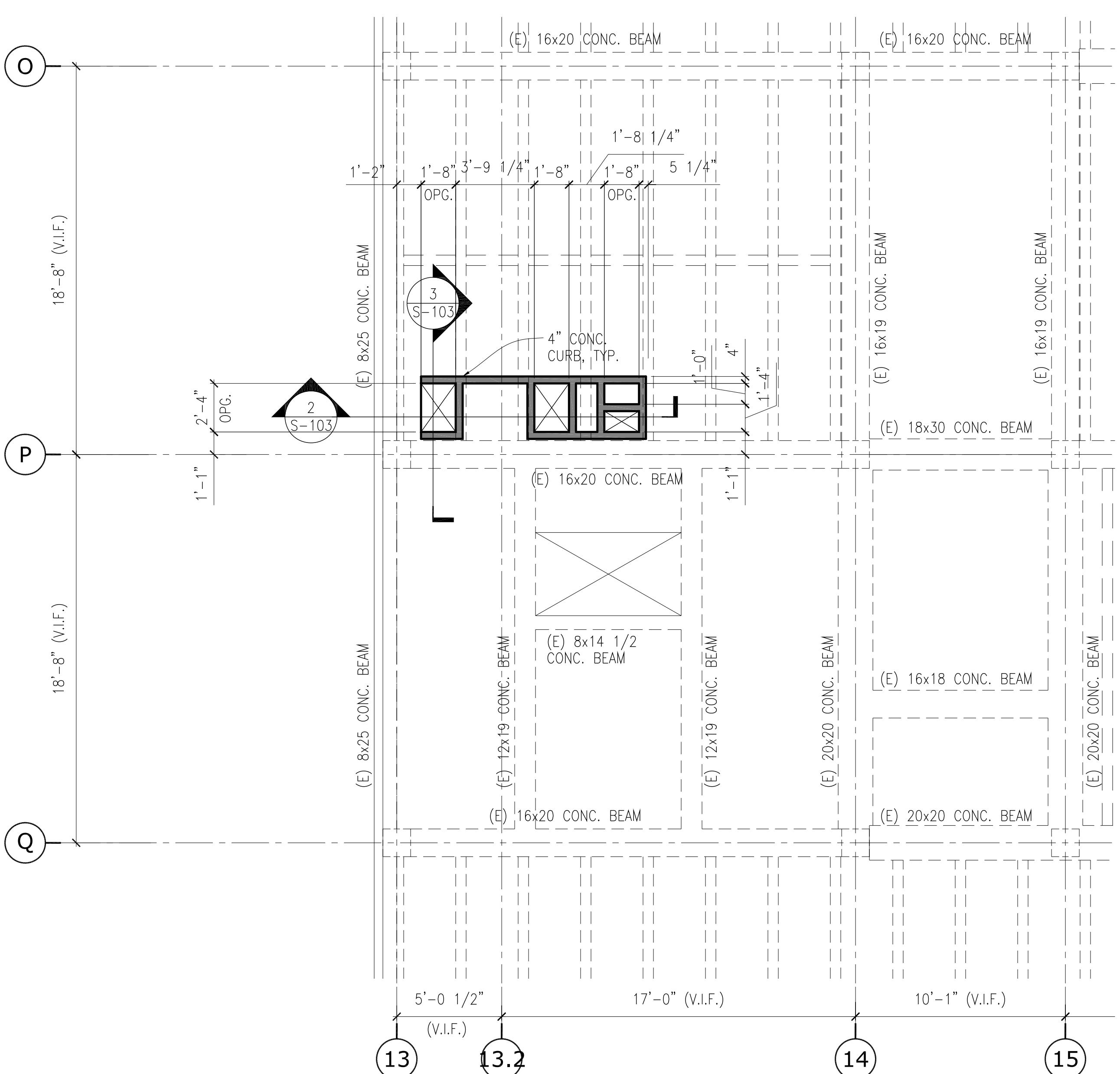
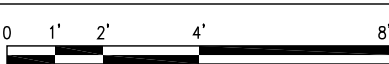
ROOF KEY NOTES

1. NEW OPENINGS IN ROOF REFER TO ARCHITECTURAL SHEETS FOR SIZES. DRILL PILOT HOLES IN CORNERS. SAWCUT OPENINGS. DO NOT OVERCUT OPENINGS.



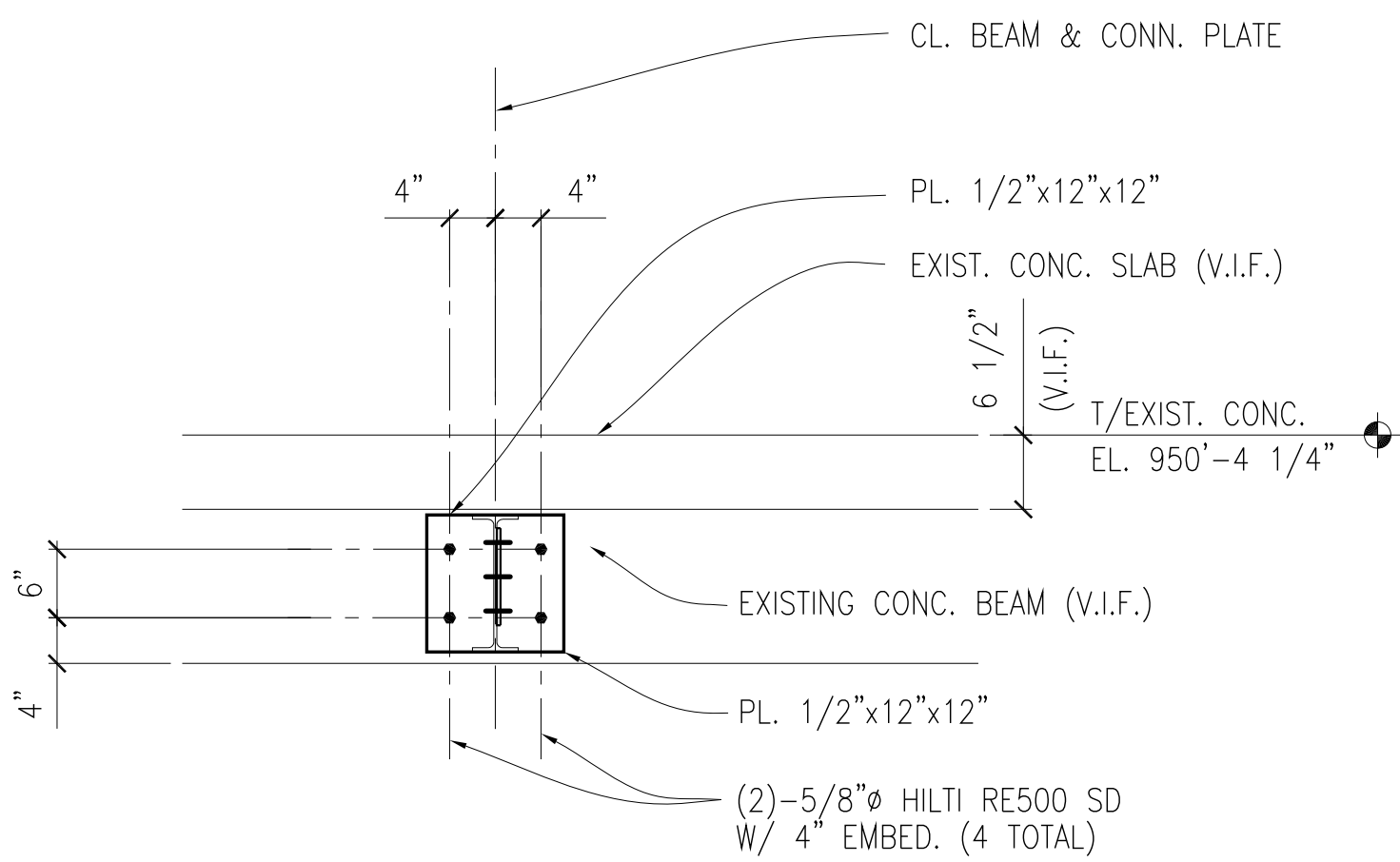
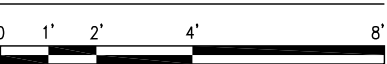
5C WING - ENLARGED PARTIAL EXISTING FOURTH FLOOR PLAN

1/4"=1'-0"



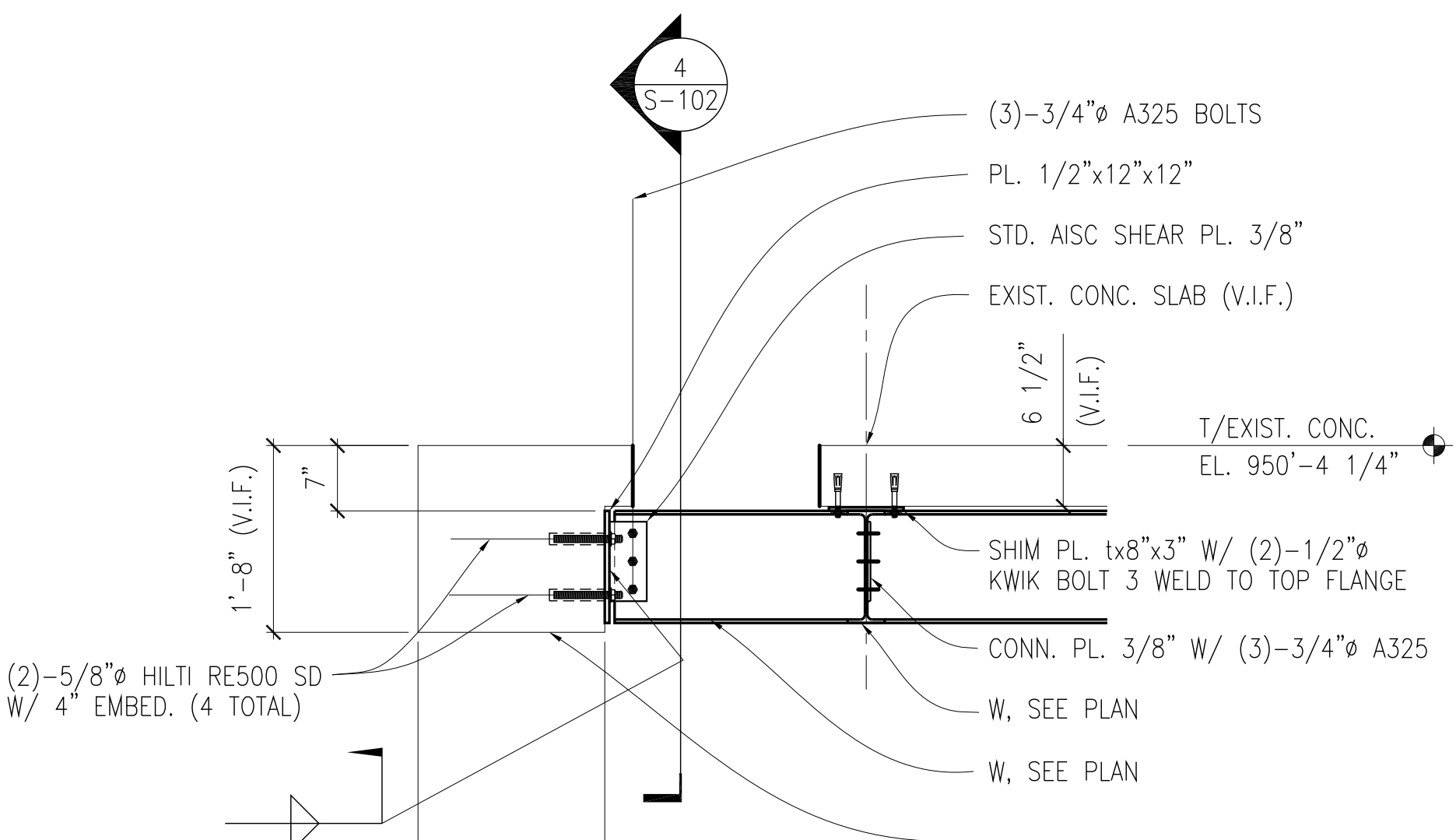
5C WING - ENLARGED PARTIAL EXISTING ROOF PLAN

1/4"=1'-0"



SECTION 4

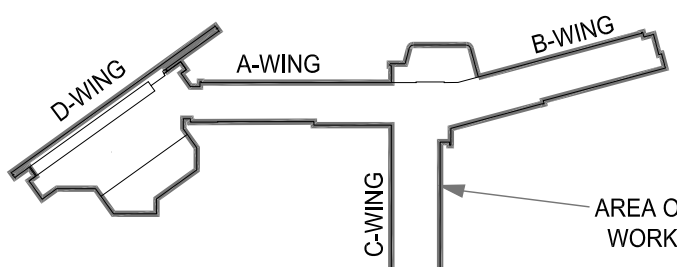
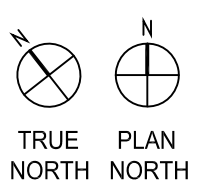
3/4"=1'-0"



SECTION 3

3/4"=1'-0"

KEYPLAN



ENGINEERS + CONSULTANTS:

JOHNSONWILBUR ADAMS, INC.
STRUCTURAL ENGINEERING
175 N. Washington St.
Wheaton, Illinois 60187
Telephone 630-653-9060
Fax 630-653-9059
www.jwase.com

ARCHITECT + ENGINEERS:

Bancroft Architects + Engineers
700 Nicholas Blvd., Suite 403
Elk Grove Village, IL 60007
T: 847.952.9362 F: 847.952.9403

Drawing Title
5C WING - ENLARGED PARTIAL EXISTING
ROOF FRAMING PLAN

Approved Project Director

Project Title
RENOVATE 3A + 3C FOR AMBULATORY CARE
Location
WILLIAM S. MIDDLETON VA HOSPITAL
MADISON, WI

Date
11/04/2016

Checked

Drawn

Project Number
607-14-106

Building Number
1

Drawing Number
S-102

Office of
Construction
and Facilities
Management

Department of
Veterans Affairs

A

three inches = one foot

B

one and one half inches = one foot

C

one inch = one foot

D

one inch = one foot

E

three quarters inch = one foot

F

one half inch = one foot

G

one half inch = one foot

H

three eighths inch = one foot

I

one quarter inch = one foot

J

one eighth inch = one foot

K

one eighth inch = one foot

L

one eighth inch = one foot

M

one eighth inch = one foot

A

B

C

D

E

F

G

H

I

J

K

L

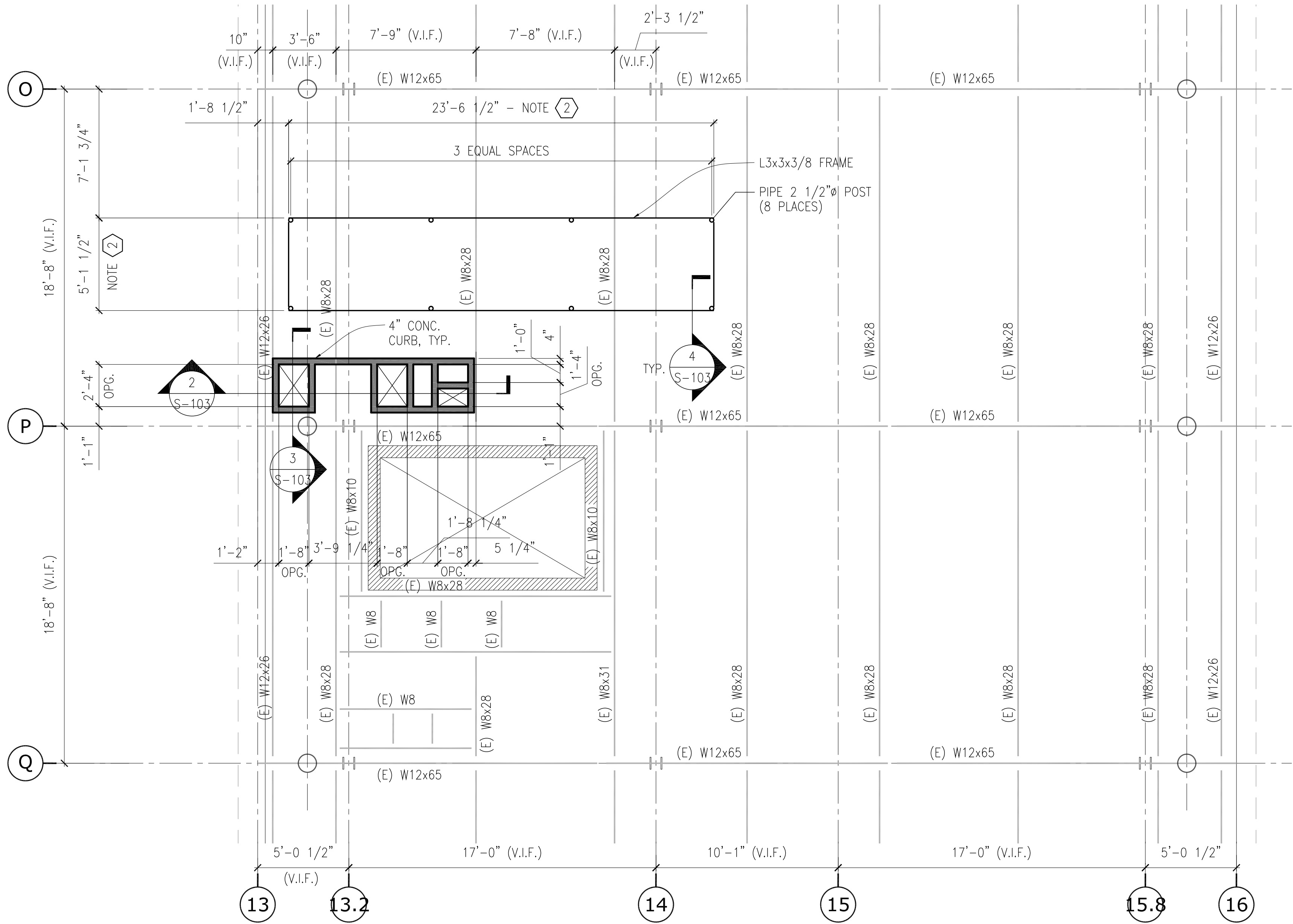
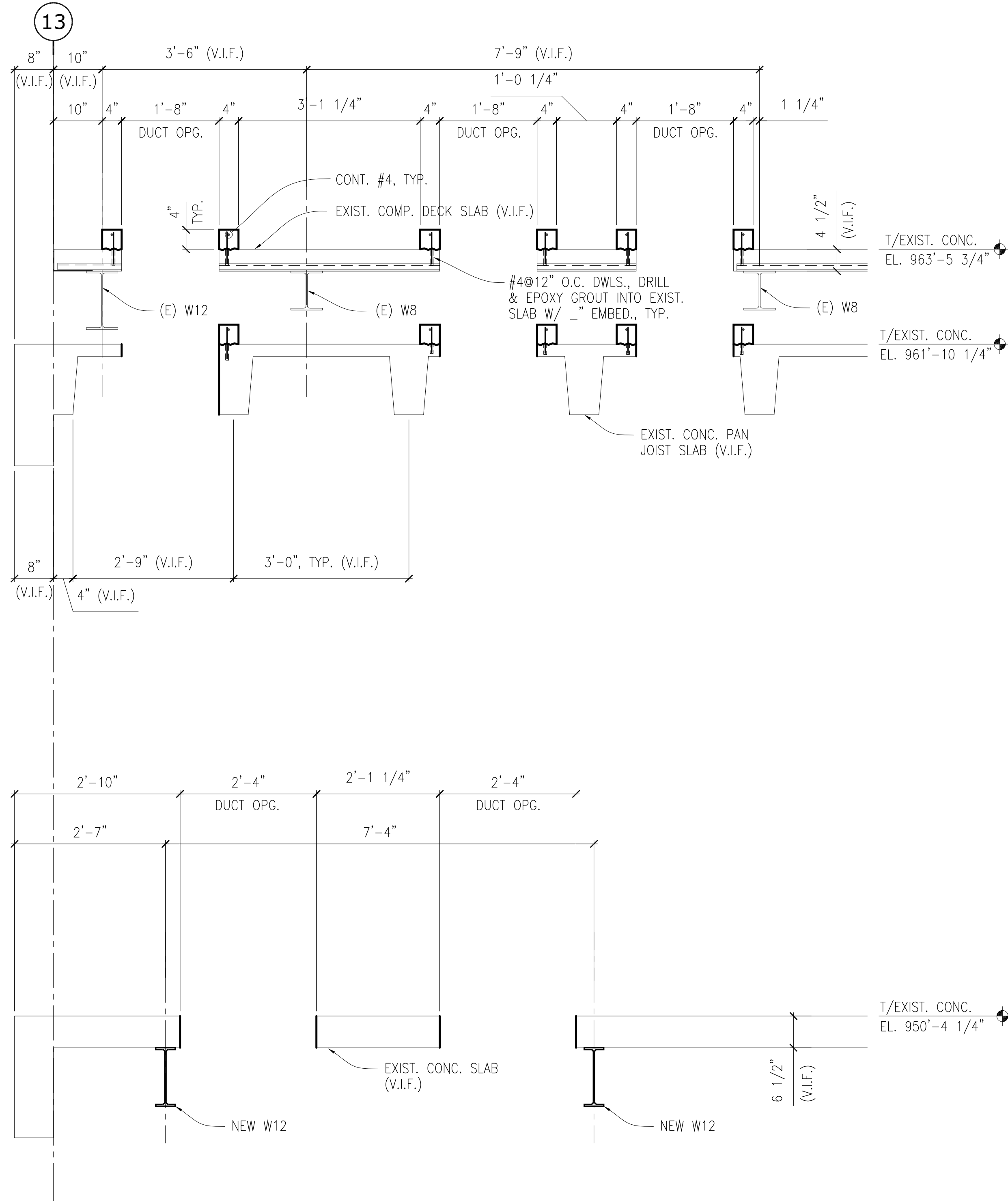
M

GENERAL SHEET NOTES

- A. ALL STEEL SHALL BE GALVANIZED
- INDICATES 3/16"x1 1/2" SERRATED GALVANIZED 19W4 GRATING WITH CROSS BARS @ 4" O.C.. GRATING SHALL BE Banded AND MECHANICALLY FASTENED.
- INDICATES MOMENT CONNECTION
- () - INDICATES VERTICAL DISTANCE ABOVE ROOF DECK ELEVATION

ROOF KEY NOTES

1. NEW OPENINGS IN ROOF REFER TO ARCHITECTURAL SHEETS FOR SIZES. DRILL PILOT HOLES IN CORNERS. SAWCUT OPENINGS. DO NOT OVERCUT OPENINGS. PROVIDE CARBON FIBER REINFORCING ON ALL SIDES OF OPENING EQUIVALENT TO 2-#5 BARS
2. COORDINATE FRAME SIZE WITH MECHANICAL UNIT DRAWINGS. ADJUST FRAME SIZE AND LOCATION ACCORDINGLY.



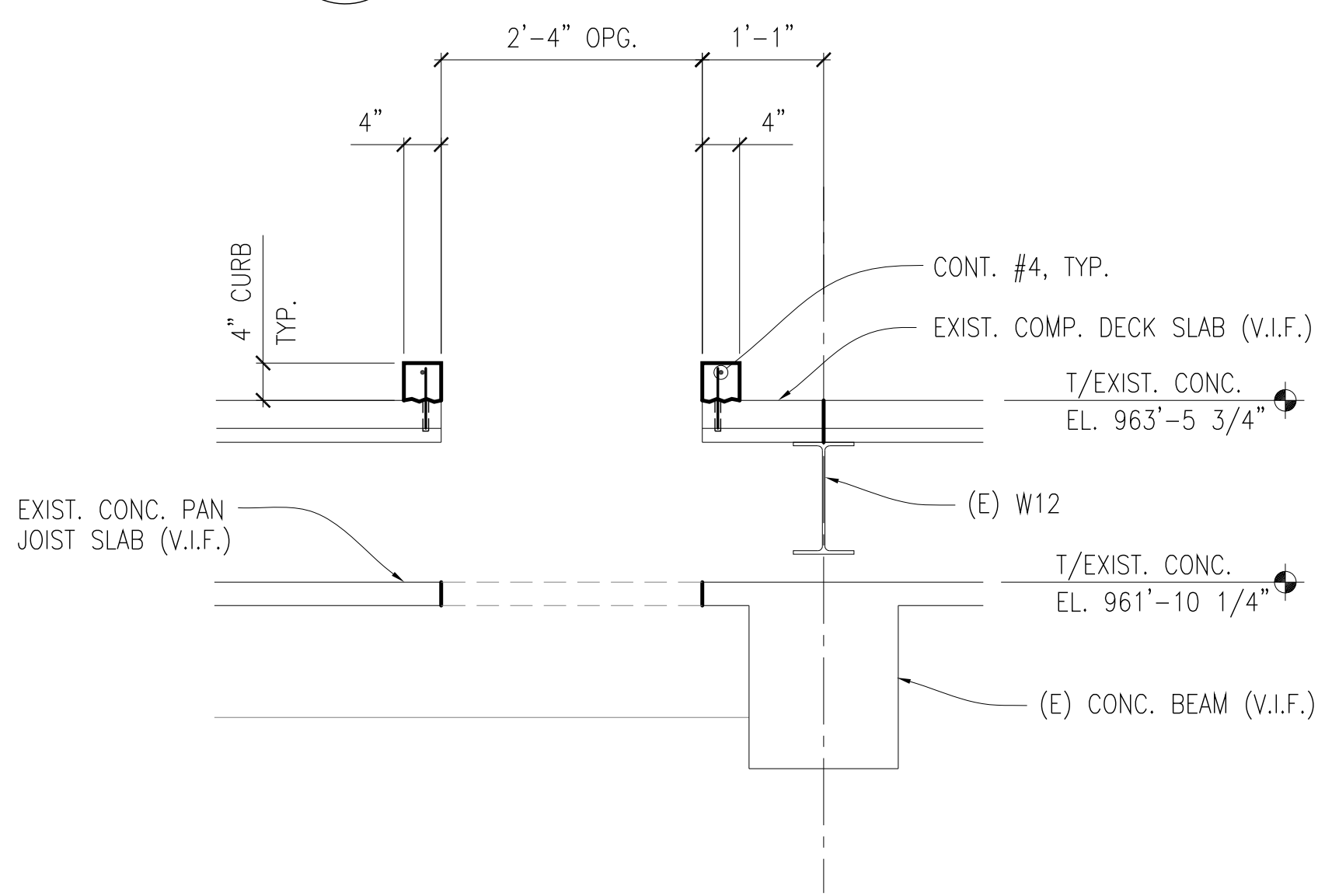
5C WING - ENLARGED PARTIAL PENTHOUSE FLOOR PLAN

1/4"=1'-0"

T/ STEEL EL. 963'-1 1/4" (V.I.F.)
T/ CONC. EL. 963'-5 3/4" (V.I.F.)

SECTION 2

3/4"=1'-0"

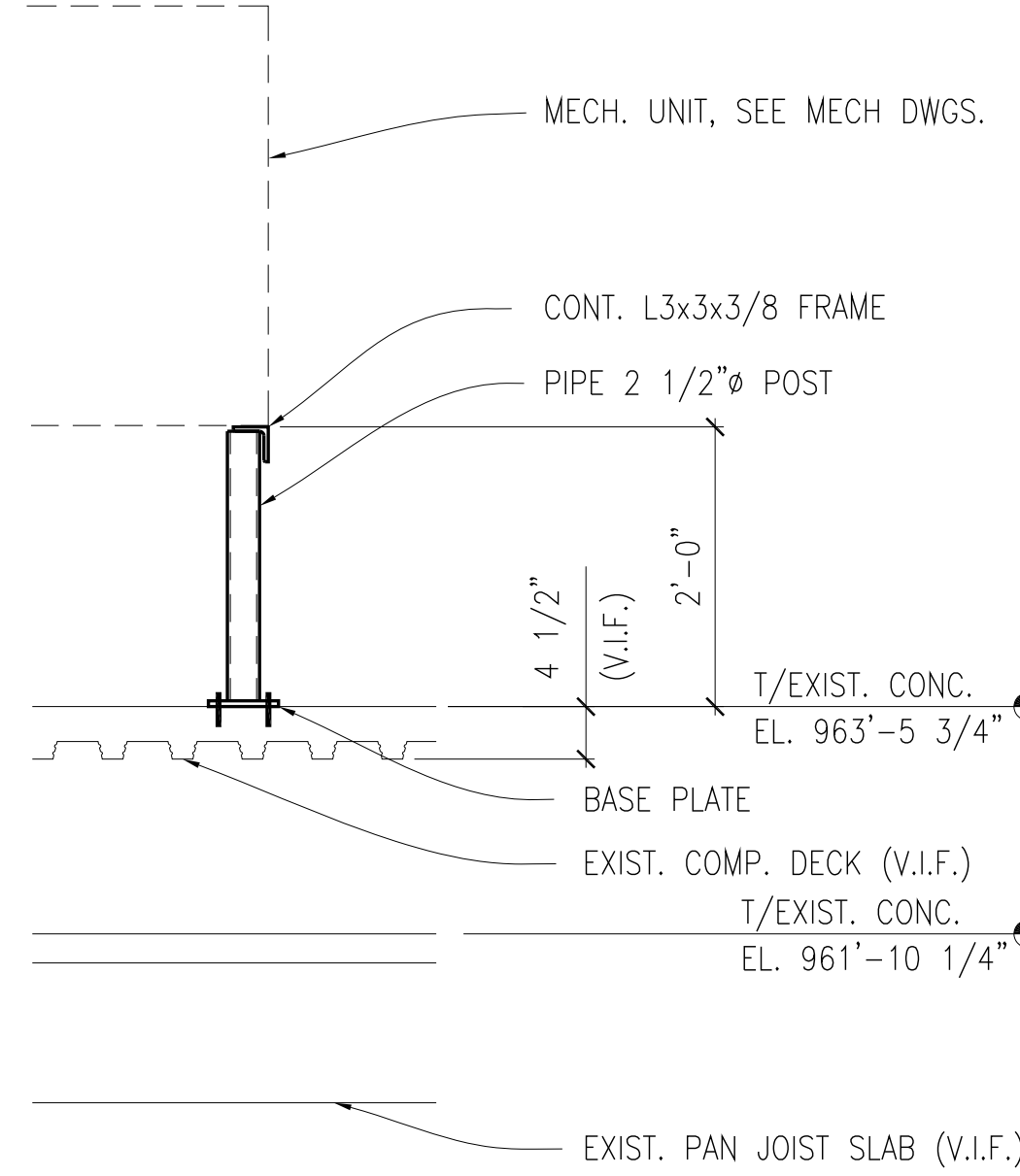


SECTION 3

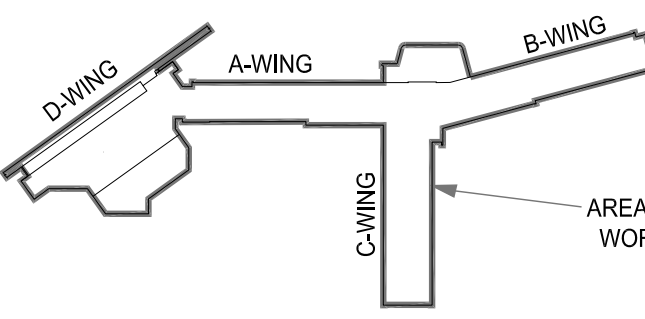
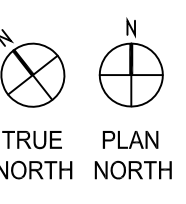
3/4"=1'-0"

SECTION 4

3/4"=1'-0"



KEYPLAN



ENGINEERS + CONSULTANTS:

JOHNSONWILBUR ADAMS, INC.
STRUCTURAL ENGINEERING
175 N. Washington St.
Wheaton, Illinois 60187
Telephone 630-653-9060
Fax 630-653-9059
www.jwase.com

ARCHITECT + ENGINEERS:

Bancroft Architects + Engineers
700 Nicholas Blvd., Suite 403
Elk Grove Village, IL 60007
T: 847.952.9362 F: 847.952.9403

Drawing Title

Approved Project Director

Project Title
RENOVATE 3A + 3C FOR AMBULATORY CARE
Location
WILLIAM S. MIDDLETON VA HOSPITAL
MADISON, WI

Date
11/04/2016
Checked
Drawn

Project Number
607-14-106
Building Number
1
Drawing Number
S-103

Office of
Construction
and Facilities
Management

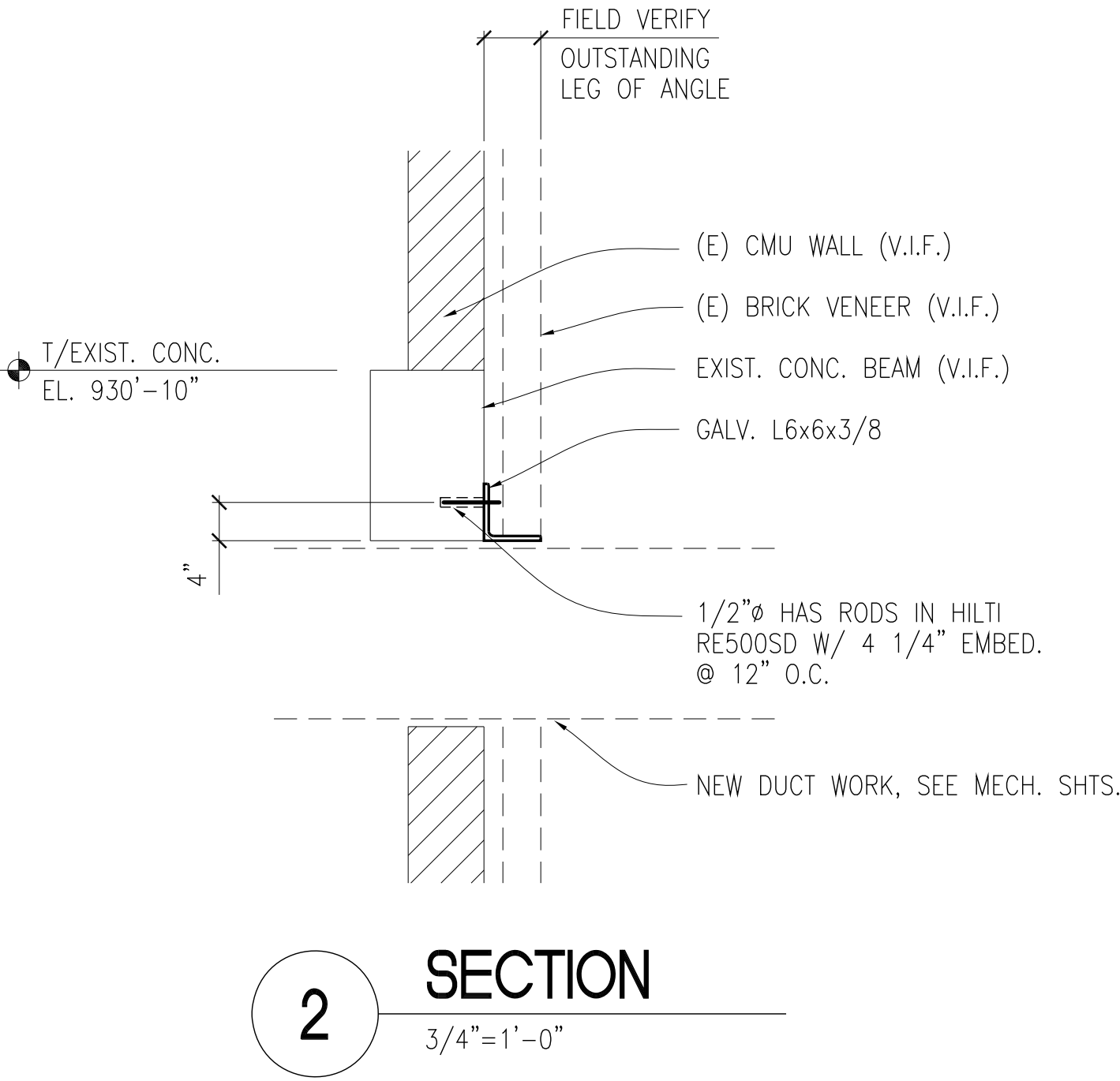
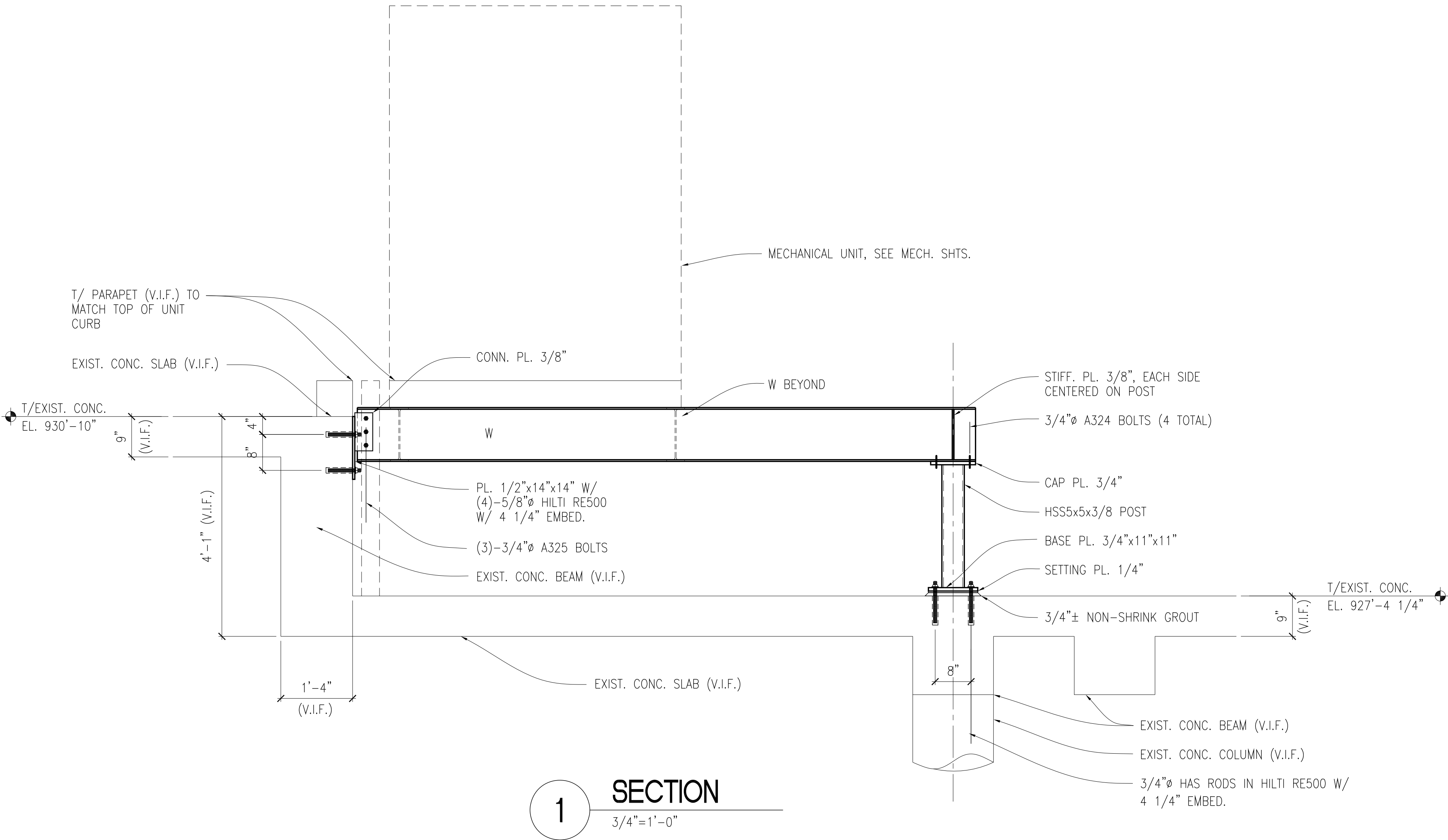


GENERAL SHEET NOTES

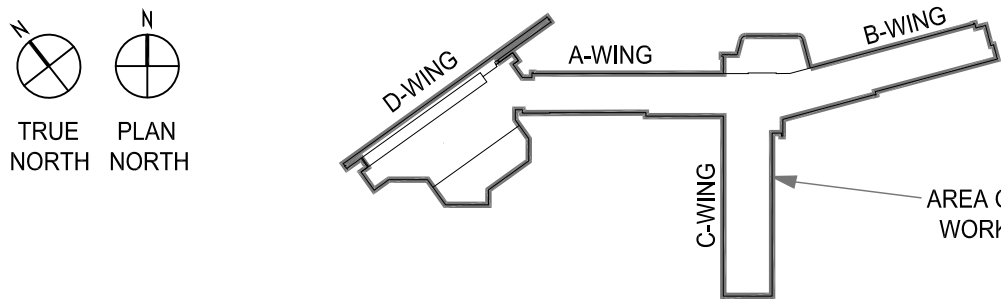
A. ALL STEEL SHALL BE GALVANIZED

ROOF KEY NOTES

1. -



KEYPLAN



ENGINEERS + CONSULTANTS:

JOHNSONWILBUR ADAMS, INC.
STRUCTURAL ENGINEERING
175 N. Washington St.
Wheaton, Illinois 60187
Telephone 630-653-9060
Fax 630-653-9059
www.jwase.com

ARCHITECT + ENGINEERS:

Bancroft
BANCROFT ARCHITECTS + ENGINEERS
700 Nicholas Blvd. Suite 403
Elk Grove Village, IL 60007
T: 847.952.9362 F: 847.952.9403

Drawing Title

2A WING - FRAMING DETAILS

Approved Project Director

Project Title

RENOVATE 3A + 3C FOR AMBULATORY CARE

Location

WILLIAM S. MIDDLETON VA HOSPITAL
MADISON, WI

Date
11/04/2016

Checked

Drawn

Project Number
607-14-106

Building Number
1

Drawing Number

S-501

Office of
Construction
and Facilities
Management



100% CONSTRUCTION DOCUMENT SUBMITTAL	11/04/2016
95% CONSTRUCTION DOCUMENT SUBMITTAL	07/06/2016
65% CONSTRUCTION DOCUMENT SUBMITTAL	04/27/2016
35% DESIGN DEVELOPMENT	02/18/2016
25% SCHEMATIC DESIGN SUBMITTAL	8/3/2015
Revisions:	Date