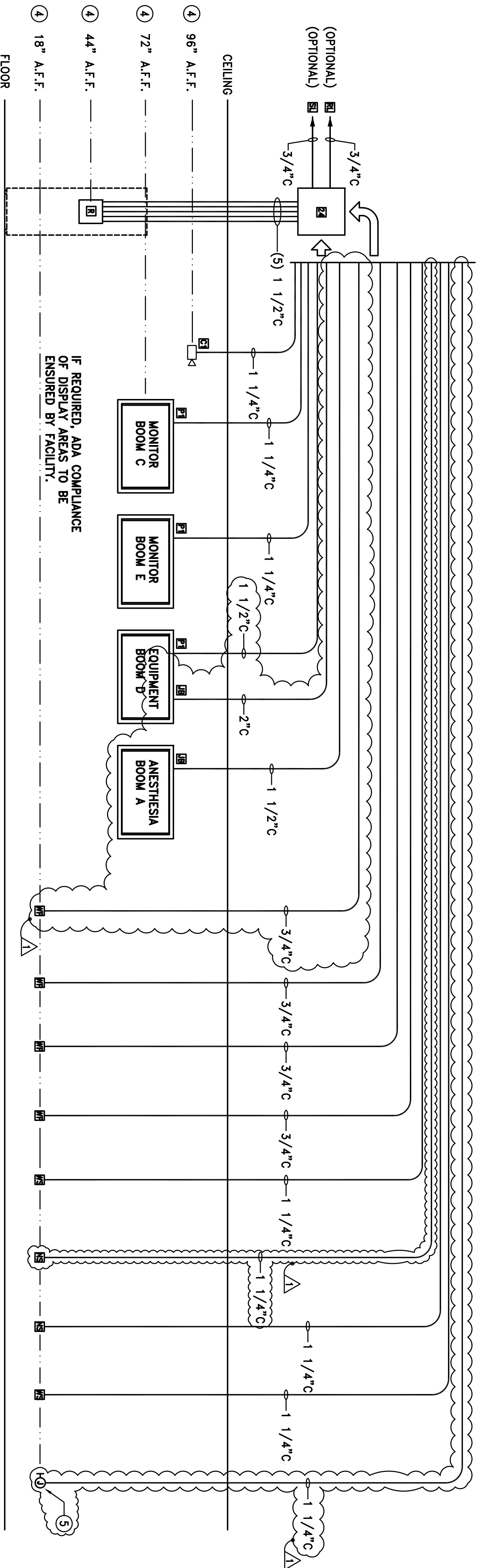


1 Enlarged Endosuite Room - AV SYSTEM DETAIL  
SCALE: 1/2"=1'-0"



2 Typical OR AV Conduit/Electrical Elevation  
SCALE: NOT TO SCALE

**SYMBOL LEGEND**

Z4 24x24x6 JUNCTION BOX (BY ELECTRICAL CONTRACTOR) ABOVE CEILING IN ACCESSIBLE LOCATION.

C1 WALL-MOUNT CAMERA: PROVIDE 4 11/16" ELECTRICAL BOX ANCHORED FIRMLY TO STUD, WITH 2GA PLASTER RING.

N3 NURSE STATION: PROVIDE (2) LINKED 4 11/16" BOXES WITH 1-GA & 2-GA WITH TOUCH SCREEN PANEL DISPLAY PLASTER RINGS FOR NURSE PC, HSTS, ETC.) PROVIDE (2) LINKED 4 11/16" BOXES WITH 1-GA PLASTER RINGS FOR NURSE PLATES. BOXES WITH 1-GA PLASTER RINGS FOR DEVICE PLATES.

P1 FLAT PANEL DISPLAY: PROVIDE 4 11/16" ELECTRICAL BOX WITH 1-GA PLASTER RING.

R 12x12x4 JUNCTION BOX (BY ELECTRICAL CONTRACTOR) IN WALL BEHIND EQUIPMENT RACK.

RU OPTIONAL ROOM LIGHTING CONTROL INTERFACE IN ACCESSIBLE LOCATION.

SL OPTIONAL SURGICAL LIGHTING CONTROL INTERFACE IN ACCESSIBLE LOCATION.

WF WALL-MOUNT CONNECTION PLATE: PROVIDE 4 11/16" ELECTRICAL BOX WITH 1GA PLASTER RING.

WS WORK STATION: (TYP FOR NURSE PC, HSTS, ETC.) PROVIDE (2) LINKED 4 11/16" BOXES WITH 1-GA PLASTER RINGS FOR DEVICE PLATES.

JB JUNCTION BOX: PROVIDE 4 11/16" ELECTRICAL BOX WITH 1-GA PLASTER RING.

W WALL MOUNT JUNCTION BOX

**SHEET NOTES**

1 CONTRACTOR SHALL VERIFY/NURSE STATION WITH AV SYSTEM VENDOR AND COTR AND ROUTE CONDUIT TO THE EXACT LOCATION FOR TOUCH SCREEN VIDEO INTEGRATED SYSTEM.

2 ROUTE CONDUIT TO MONITOR DISPLAY AT ROOM FIELD VERIFY FOR EXACT LOCATION WITH AV SYSTEM VENDOR AND COTR.

3 ROUTE CONDUIT TO JUNCTION BOX AT ROOM FIELD VERIFY FOR EXACT LOCATION WITH AV SYSTEM VENDOR AND COTR.

4 CONTRACTOR SHALL VERIFY EXACT MOUNTING HEIGHT WITH AV SYSTEM VENDOR AND COTR.

5 SIEMENS AXIS IMAGE JUNCTION BOX. FIELD VERIFY LOCATION WITH AV SYSTEM VENDOR AND COTR.

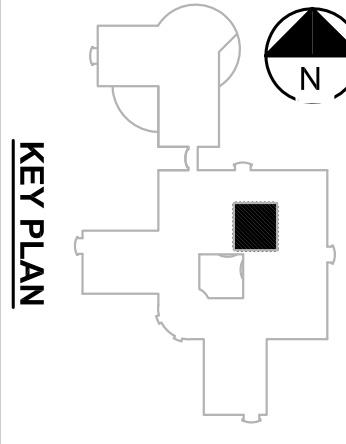
**GENERAL NOTES**

CONTRACTOR SHALL TO COORDINATE & VERIFY ALL CONDUITS LOCATION AND AV SYSTEM REQUIREMENTS WITH AV SYSTEM VENDOR AND COTR PRIOR TO INSTALLATION

**CONSULTANTS:**

|                 |            |
|-----------------|------------|
| AMENDMENT NO. 2 | 04-05-2012 |
| BID DOCUMENTS   | 07-22-2011 |
| Revisions       |            |

**F.W. ASSOCIATES, INC.**  
CONSULTING ENGINEERS  
320 PAVANIA SUITE 400, OAKLAND, CA 94607  
Phone: (510) 753-7875 Fax: (510) 753-7815



**ARCHITECT/ENGINEERS:**  
**WE**  
Architecture + Interiors  
229 9TH STREET, Suite 201  
SAN FRANCISCO, CA 94103  
T (415) 862-7776 F (415) 862-7339  
www.wellaweb.com

Drawing Title  
**ENLARGED ENDOSUITE ROOM - AV SYSTEM**

Project Title  
**RENOVATE OR FOR ENDOSUITE, BUILDING 100, 3RD FLOOR**

Approved Project Director  
Date  
JUL Y 22, 2011

Location  
3801 MIRANDA AVE, PALO ALTO CA 94304

Project Number  
**640-11-119P**  
Building Number  
**BLDG 100 / 3RD FL.**  
Drawing Number  
**E-7.5**

**Office of Facilities Management**  
Department of Veterans Affairs