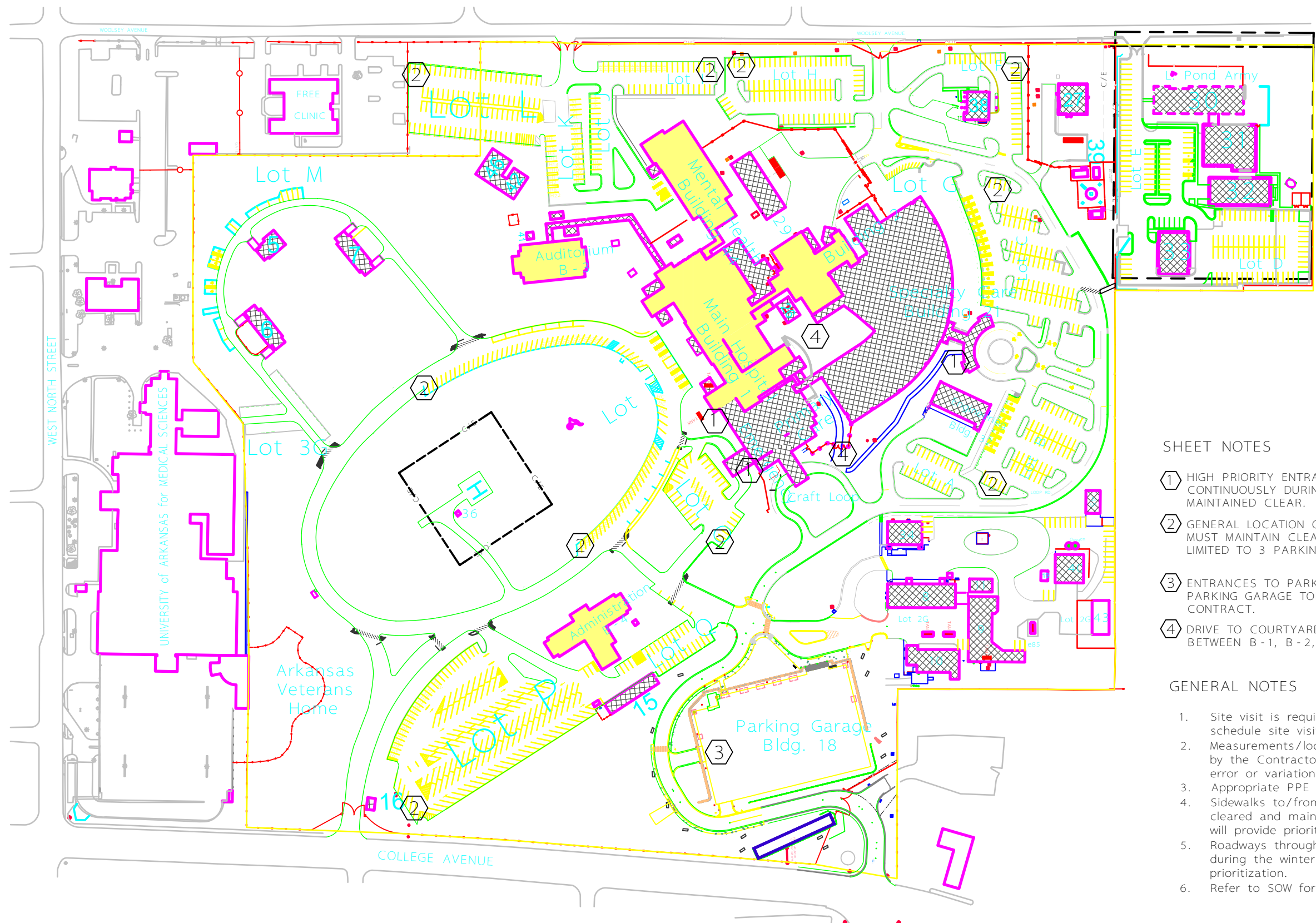


PARKING LOT LEGEND

LOT	PURPOSE
A	EMPLOYEE
B	PATIENT
C	PATIENT
D	EMPLOYEE
E	EMPLOYEE
F	EMPLOYEE & CREDIT UNION
G	MOTORCYCLE
H	EMPLOYEE
I	PATIENT AND HC EMPLOYEE
J	PATIENT
K	VOLUNTEER
L	EMPLOYEE
M	EMPLOYEE
N	PATIENT
O	PATIENT
P	EMPLOYEE
Q	PATIENT
1G	EMPLOYEE
2G	EMPLOYEE
3G	EMPLOYEE
4G	EMPLOYEE
5G	EMPLOYEE

SHEET NOTES

- ① HIGH PRIORITY ENTRANCE. MUST BE STAFFED CONTINUOUSLY DURING EVENT PRECIPITATION AND MAINTAINED CLEAR.
- ② GENERAL LOCATION OF ALLOWED SNOW PILING. ANY PILING MUST MAINTAIN CLEAR AISLE FOR CIRCULATION AND BE LIMITED TO 3 PARKING SPACES.
- ③ ENTRANCES TO PARKING GARAGE ARE TO BE CLEARED.



PARKING LOT LEGEND


LOT	PURPOSE
A	EMPLOYEE
B	PATIENT
C	PATIENT
D	EMPLOYEE
E	EMPLOYEE
F	EMPLOYEE & CREDIT UNIC
G	MOTORCYCLE
H	EMPLOYEE
I	PATIENT AND HC EMPLOY
J	PATIENT
K	VOLUNTEER
L	EMPLOYEE
M	EMPLOYEE
N	PATIENT
O	PATIENT
P	EMPLOYEE
Q	PATIENT
1G	EMPLOYEE
2G	EMPLOYEE
3G	EMPLOYEE
4G	EMPLOYEE
5G	EMPLOYEE

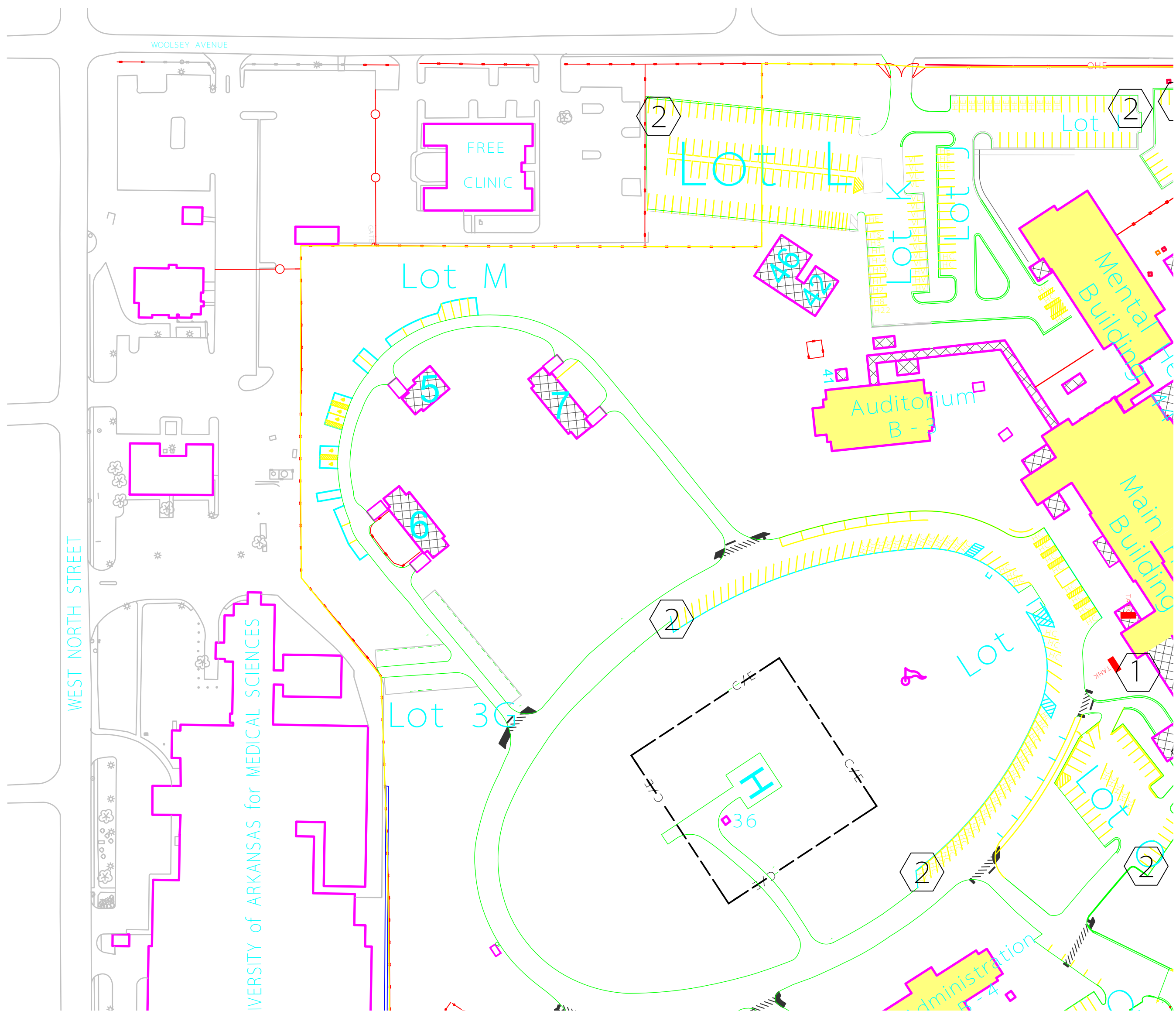
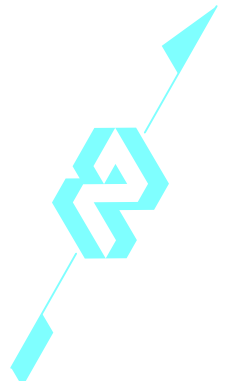
SHEET NOTES

- 1
- HIGH PRIORITY ENTRANCE. MUST BE STAFFED CONTINUOUSLY DURING EVENT PRECIPITATION AND MAINTAINED CLEAR.
- 2
- GENERAL LOCATION OF ALLOWED SNOW PILING. ANY PILING MUST MAINTAIN CLEAR AISLE FOR CIRCULATION AND BE LIMITED TO 3 PARKING SPACES.
- 3
- ENTRANCES TO PARKING GARAGE ARE TO BE CLEARED. PARKING GARAGE TOP FLOOR IS NOT INCLUDED IN THIS CONTRACT.
- 4
- DRIVE TO COURTYARD MUST BE CLEARED. COURTYARD BETWEEN B-1, B-2, B-21 MUST BE CLEARED.

GENERAL NOTES

1.
- Site visit is required for submitting proposal. CO/COR will schedule site visit prior to bid.
2.
- Measurements/locations are approximate and shall be verified by the Contractor. VA will not be held responsible for any error or variation in any measurements or other data listed.
3.
- Appropriate PPE and safety procedures required.
4.
- Sidewalks to/from entrances and parking areas must be cleared and maintained during the winter weather event. COR will provide prioritization.
5.
- Roadways throughout station must be cleared/maintained during the winter weather event. COR will provide prioritization.
6.
- Refer to SOW for additional details/specifications.

		Approved: Medical Center Facility Manager		Project Title WINTER WEATHER ON CALL SERVICE AGREEMENT		Drawing Title SITE PLAN		Project Number 564 - TBD		Engineering Service  Department of Veterans Affairs	
								Building Number STATION			
								Drawing Number S - 1			
Notes and/or Revisions:		Date		Approved: Engineering Service Chief		Measures one inch or not to scale 0 1" NTS		Location VAMC - Fayetteville, AR		Checked ENG	
								Drawn ENG		Date 07 APR 17	
										Sheet 1 of 1	



		Approved: VHSO Associate Director		Project Title		Drawing Title		Project Number		Engineering Service	
				Hospital Building		FIFTH FLOOR PLAN		564 -		Department of Veterans Affairs	
		Approved: Service Chief		Measures one inch or not to scale		Scale:		Building Number		AS100	
				0 1"		1/4" = 1' - 0"		01 (One)		Sheet 6 of 6	
Notes and/or Revisions:		Date		Location		Checked		Drawn		Date	
				VA Health Care System of the Ozarks		JCH		ENG		May 5, 2012	