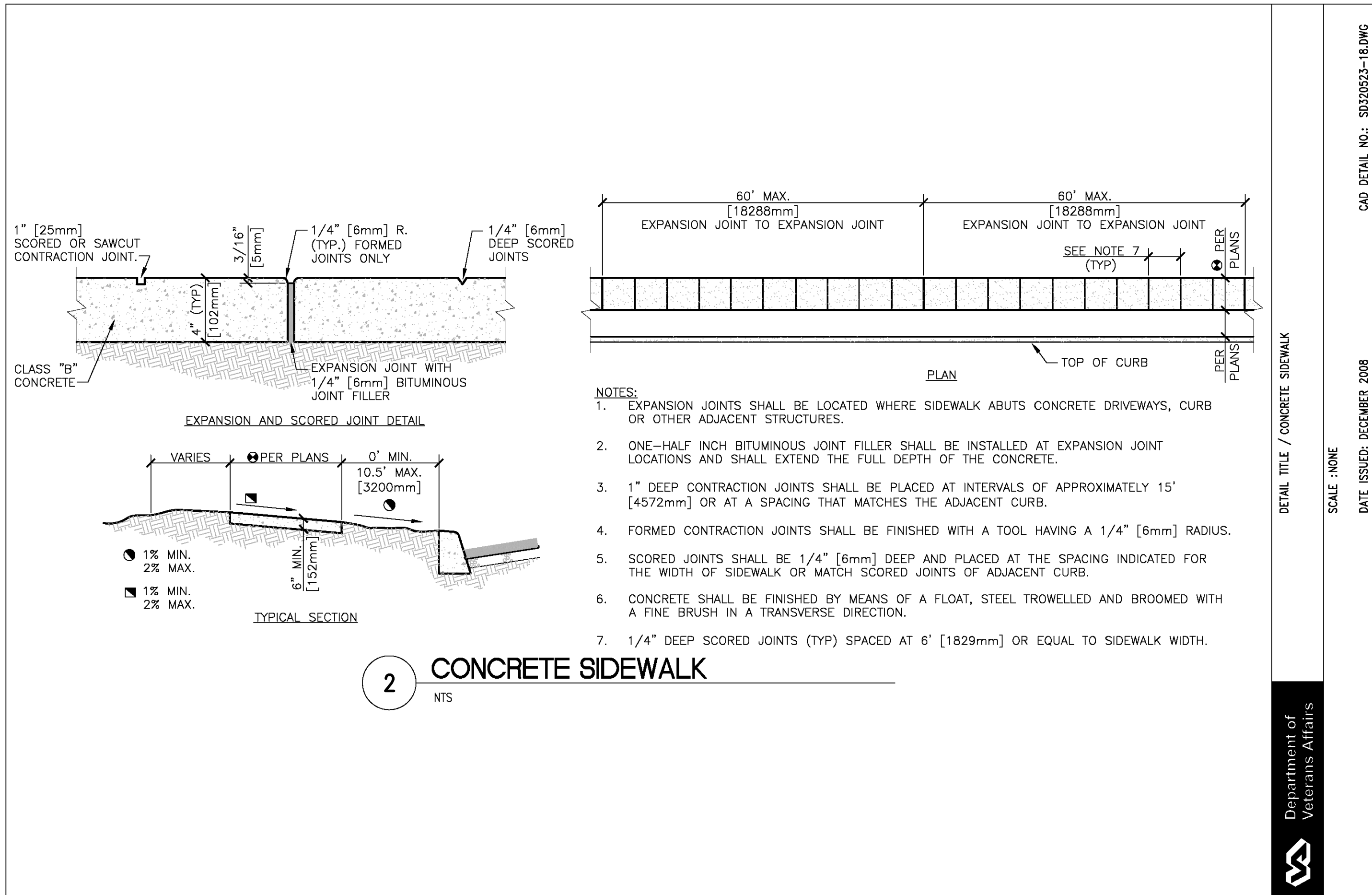
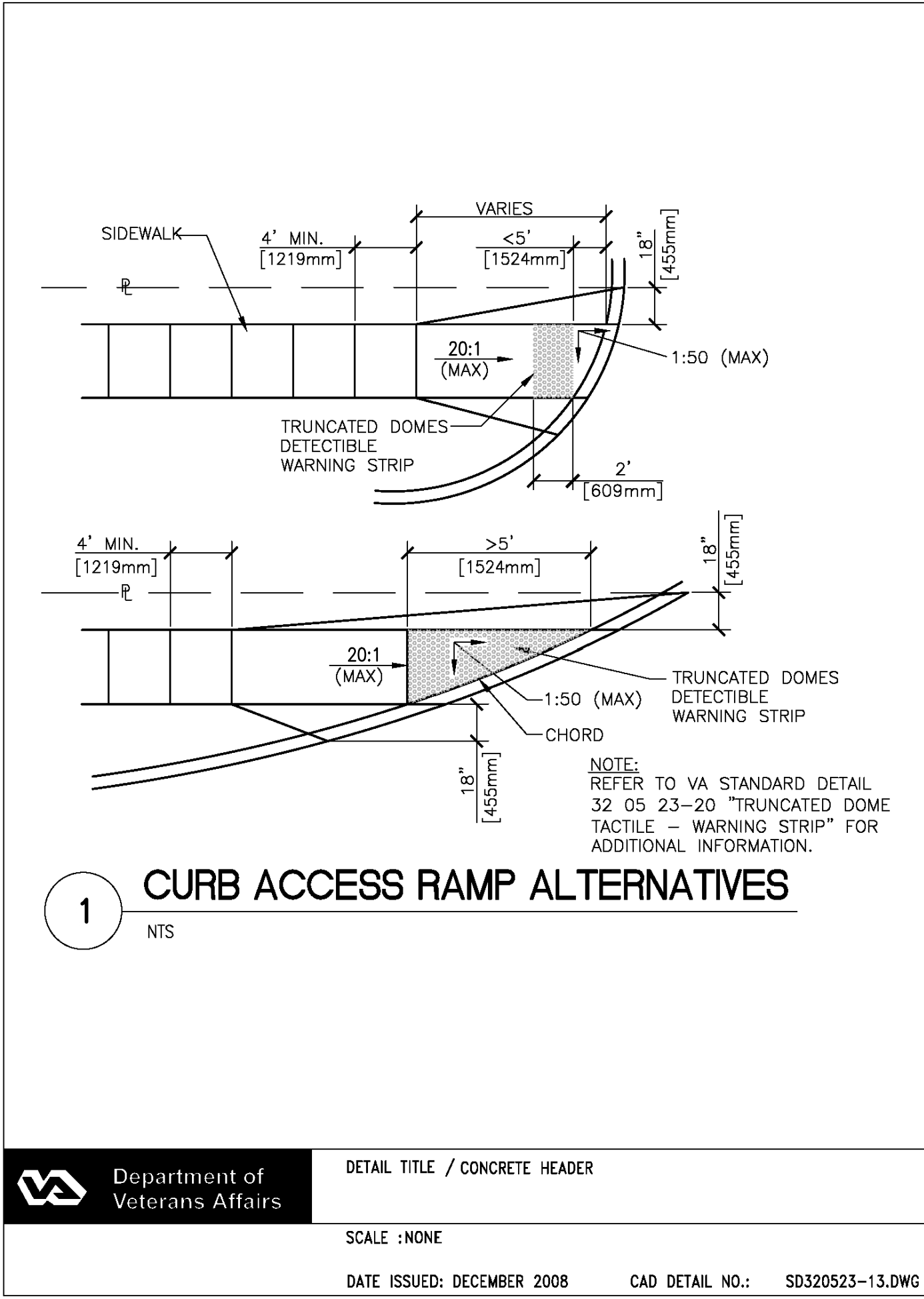






6"  
three inches = one foot  
1  
0  
6"  
one and one-half inches = one foot  
2  
0  
6"  
one inch = one foot  
2  
0  
6"  
three quarters inch = one foot  
4  
0  
6"  
one half inch = one foot  
4  
0  
6"  
three eighths inch = one foot  
8  
0  
6"  
one quarter inch = one foot  
16  
0  
6"  
one eighth inch = one foot



## CONSTRUCTION DOCUMENTS

				<b>CONSULTANTS:</b>		 <b>O'BrienEngineering, Inc.</b> Hydraulics - Hydrology - Civil Engineering		 <b>ENGINEERING CONSULTANTS</b> Experience you can build on.™		 Texas Firm Registration No. 8856 1225 N Loop W, Suite 800 HOUSTON, TX 77008 713.864.2900		<b>ARCHITECT/ENGINEERS:</b> <b>COX DESIGN ASSOCIATES</b> ARCHITECTURE PLANNING INTERIORS Austin, Chicago 512 Bee Caves Road, Suite 203 820 Davis St., Suite 452 Austin, Texas 78746 Evanston, IL 60021 F:512- 327- 4149 F:512- 454- 9434 F:512- 327- 7679 F:312- 454- 9439 bc Cox@coxdesignassociates.com bc Cox@coxdesignassociates.com		Approved: Chief of MH Date: Approved: Director Date:		Approved: Chief of FMS Date: Approved: VA Energy Engineer Date:		Drawing Title <b>STANDARD DETAILS: SITE/PAVING</b> Location: <b>TOMAH VAMC 500 E. VETERANS STREET TOMAH, WI. 54660</b>		Project Name <b>CONSTRUCT TWO CLC HOMES</b>		Project Number <b>676-324</b> Date 12/16/2016 Drawing Number <b>1-CP-501</b> Dwg. of		Office of Construction and Facilities Management Department of Veterans Affairs	
Revisions:		Date																							