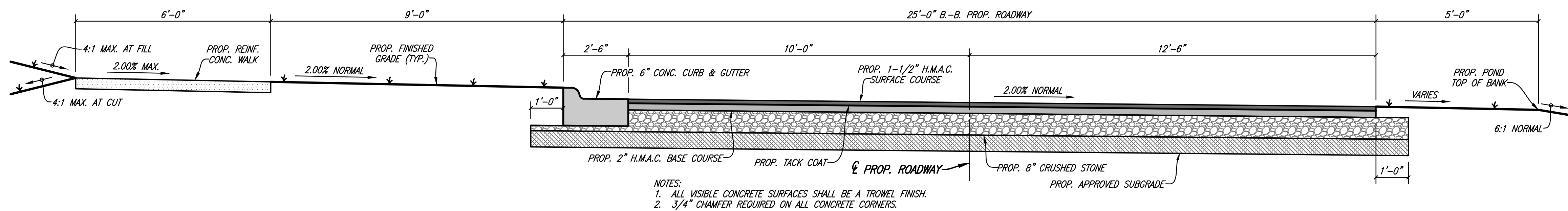
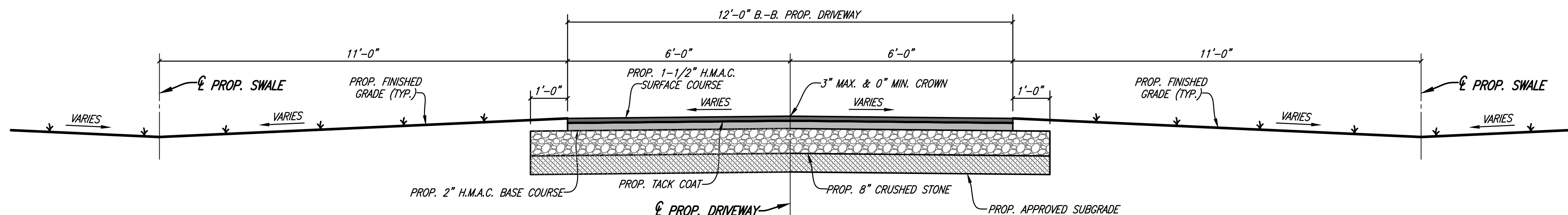


three inches = one foot  
one and one-half inches = one foot  
one inch = one foot  
three quarters inch = one foot  
one half inch = one foot  
three eighths inch = one foot  
one quarter inch = one foot  
one eighth inch = one foot



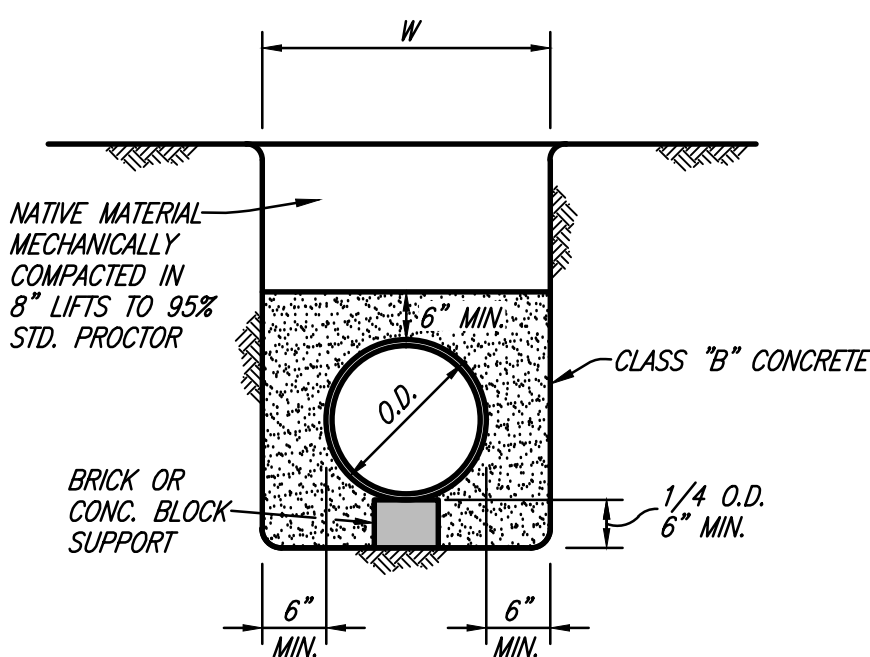
1 PROPOSED ROADWAY SECTION

NO SCALE



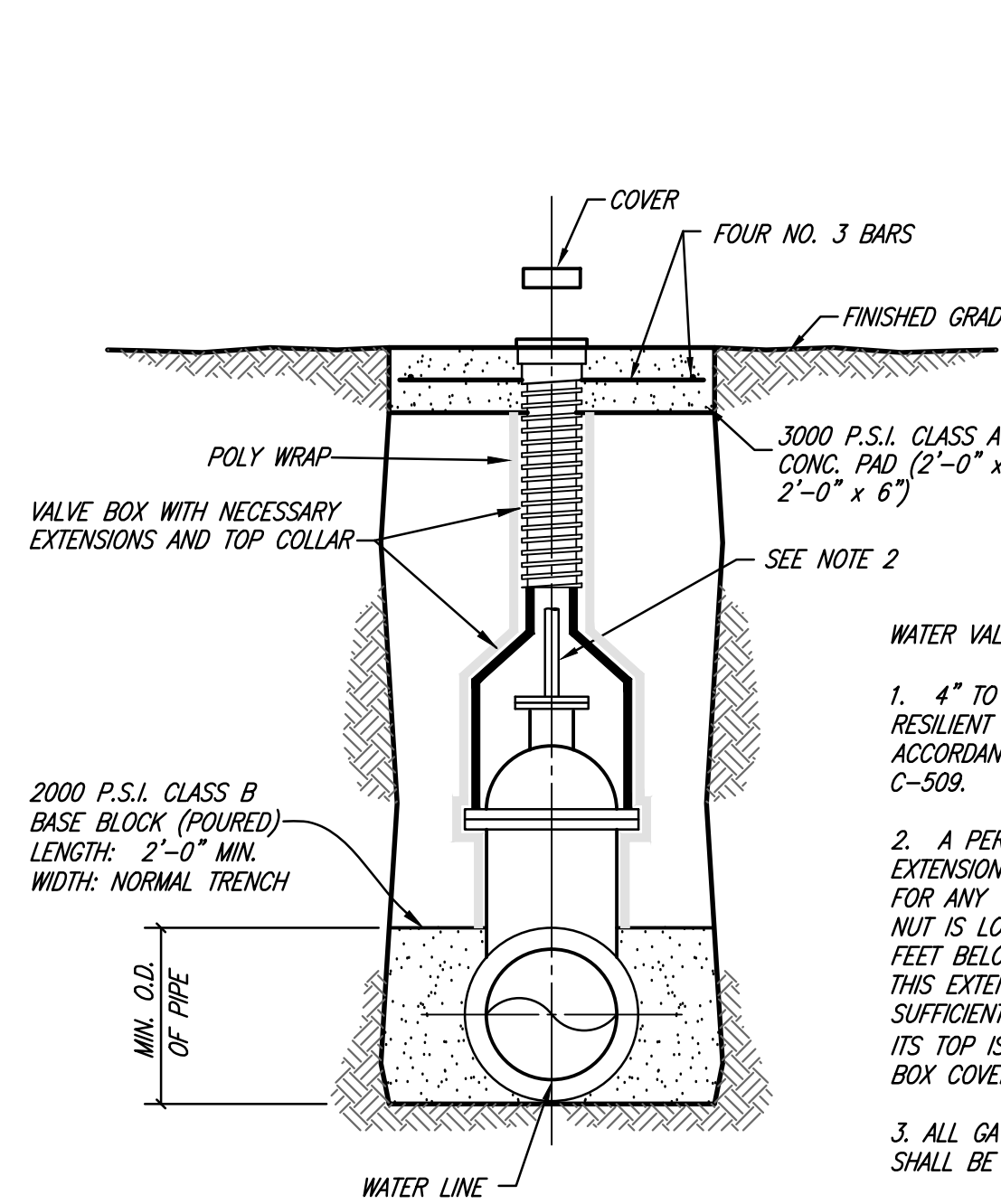
2 ASPHALT DRIVEWAY SECTION

NO SCALE



9 CLASS G EMBEDMENT

CONCRETE ENCASEMENT

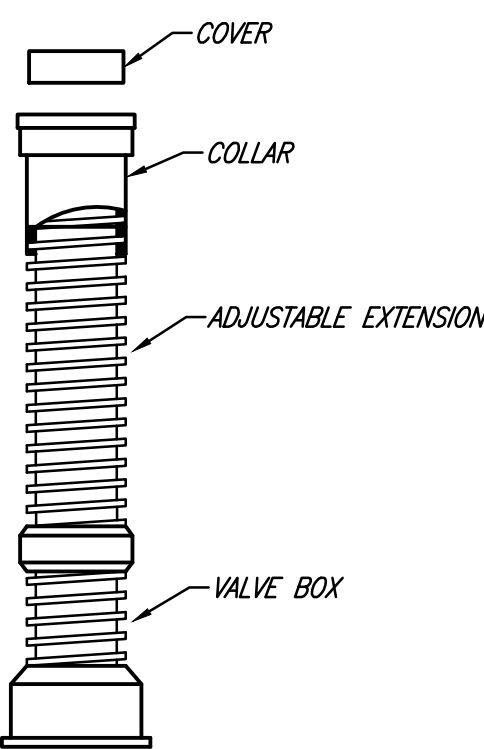
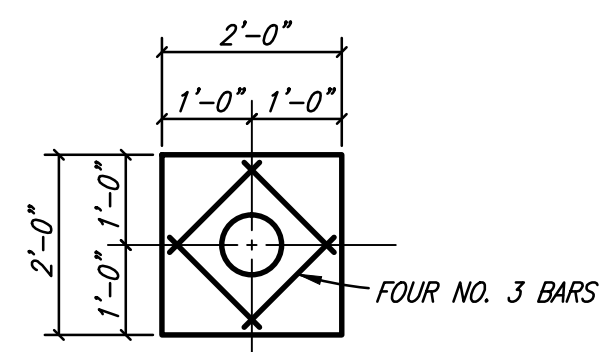


5 GATE VALVE SETTING & BOX

NO SCALE

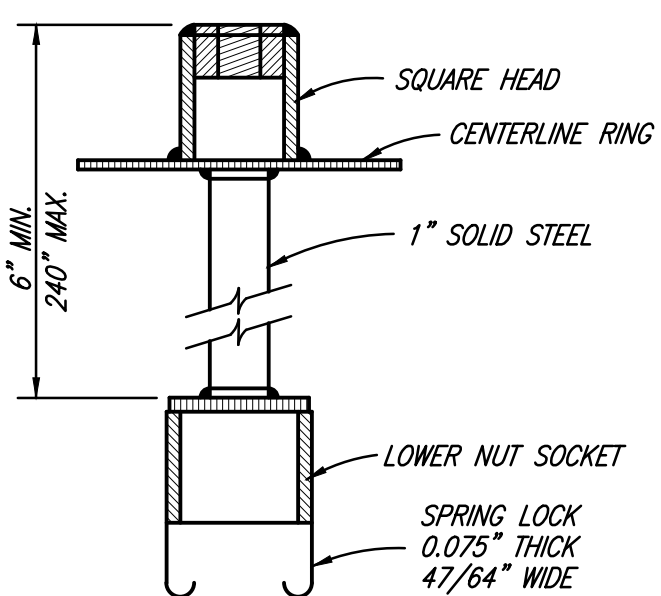
6 VALVE BOX PAD PLAN

NO SCALE



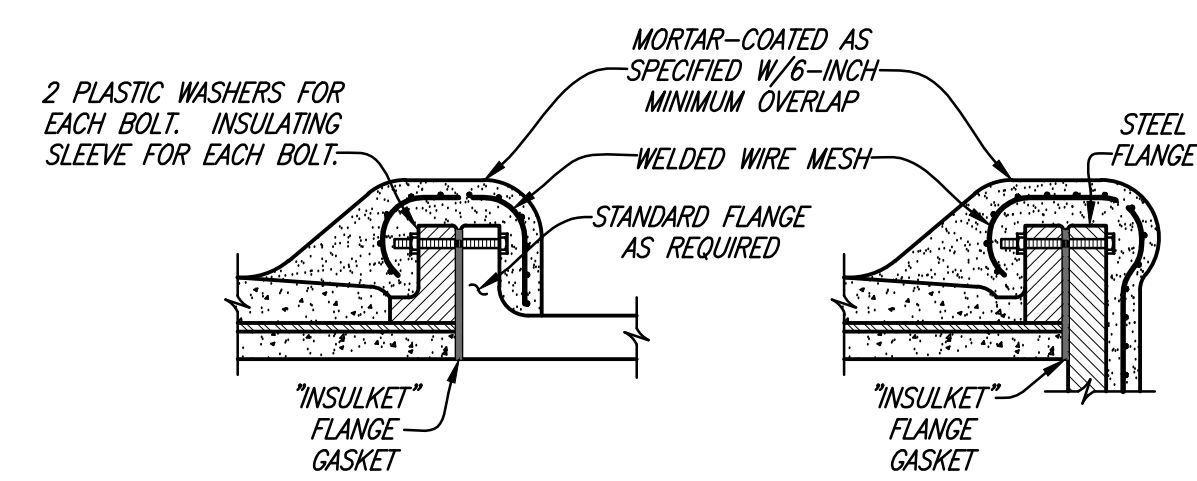
7 VALVE BOX WITH EXTENSION

NO SCALE



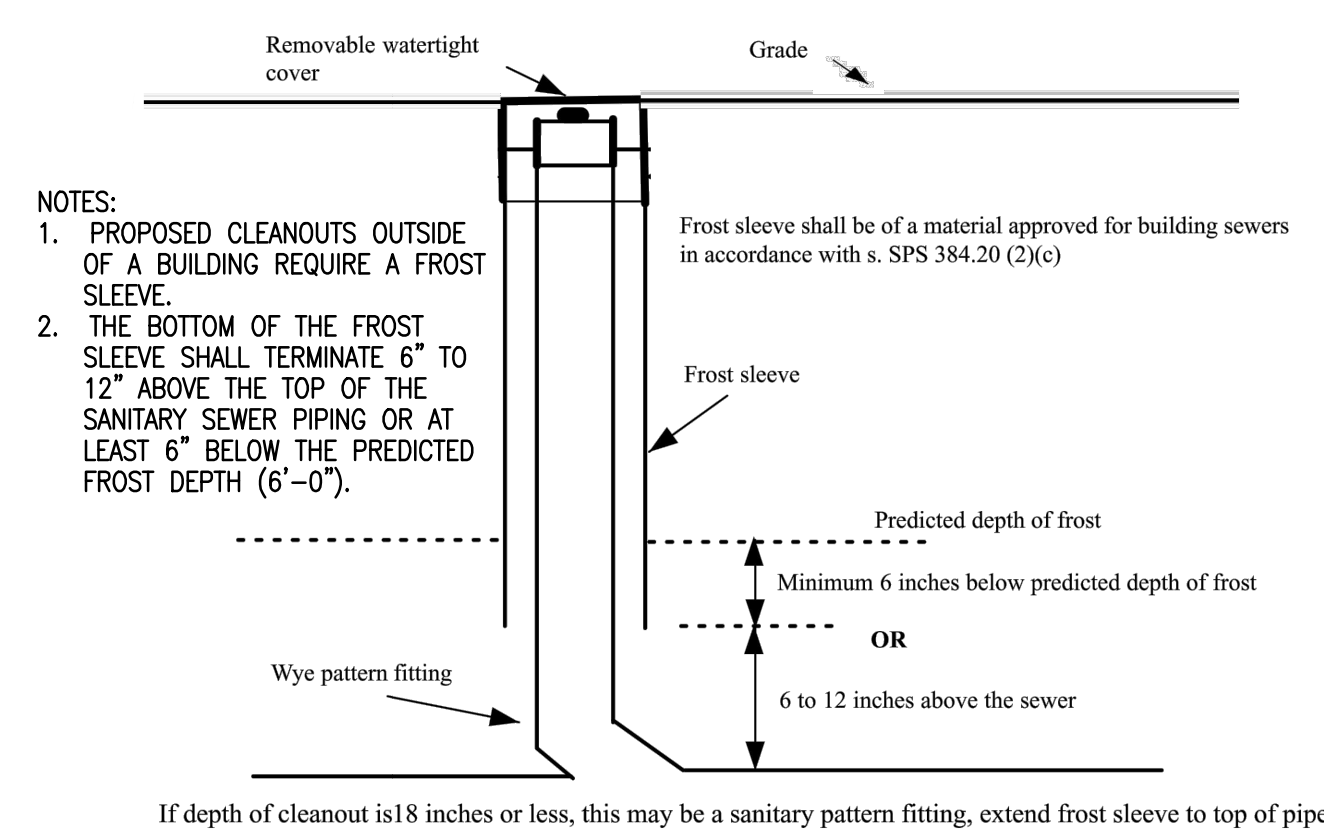
8 SPRING LOCK VALVE EXTENSION

NO SCALE



10 FLANGED CONNECTIONS

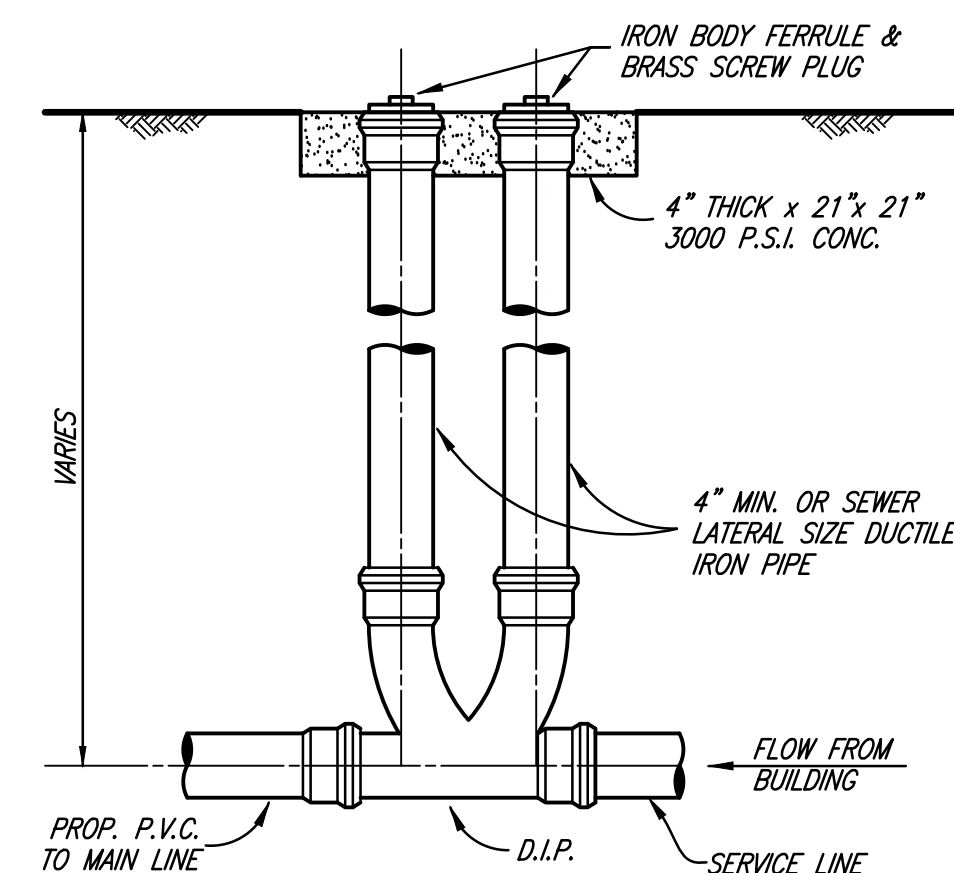
NO SCALE



3 FREEZE PROTECTION

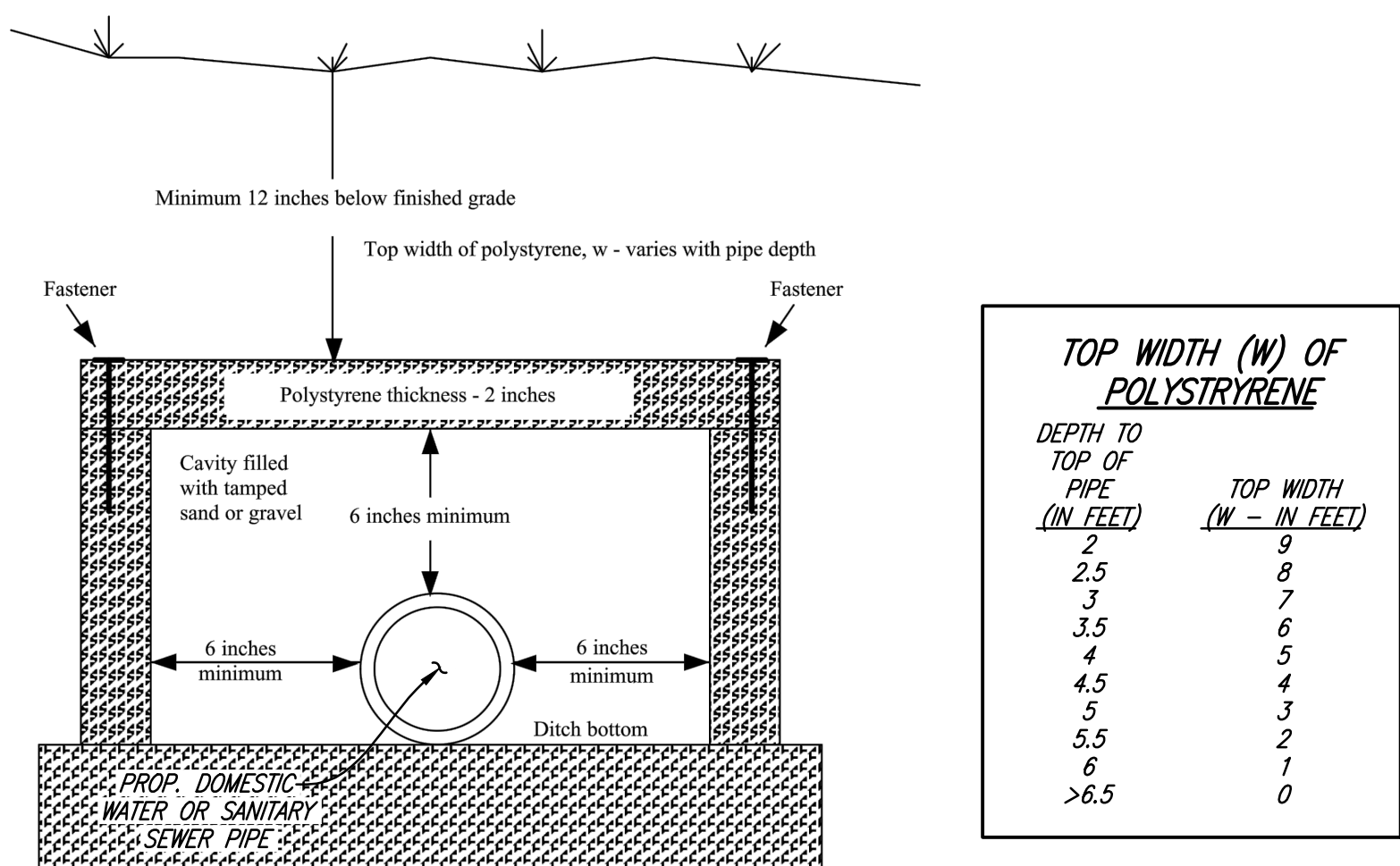
FOR SANITARY SEWER CLEANOUT  
(WISCONSIN DEPARTMENT OF SAFETY AND  
PROFESSIONAL SERVICES (SPS) REQUIREMENT)

NO SCALE



4 TYPICAL TWO WAY CLEANOUT

NO SCALE



11 FREEZE PROTECTION

FOR PROPOSED WATER OR SANITARY SEWER PIPE  
(WISCONSIN DEPARTMENT OF SAFETY AND  
PROFESSIONAL SERVICES (SPS) REQUIREMENT)

NO SCALE

## CONSTRUCTION DOCUMENTS

Revisions:		Date	CONSULTANTS:		ARCHITECT/ENGINEERS:		Approved: Chief of MH	Approved: Chief of FMS	Drawing Title	Project Name	Project Number
			O'BrienEngineering, Inc.		COX DESIGN ASSOCIATES		Date:	Date:	MISCELLANEOUS CIVIL DETAILS	CONSTRUCT TWO CLC HOMES	676-324
			K J W W ENGINEERING CONSULTANTS		ARCHITECTURE PLANNING INTERIORS		Approved: Director	Approved: VA Energy Engineer			12/16/2016
			H2B INC.		Austin 5121 Bee Caves Road, Suite 203 Austin, Texas 78746 T:312-454-9434 F:312-327-7679 bcoc@coxdesignassociates.com		Date:	Date:	Location:		Drawing Number
			Hydraulics - Hydrology - Civil Engineering		Chicago 820 Davis St., Suite 452 Evanston, IL 60201 T:312-454-9434 F:312-454-9439 bcoc@coxdesignassociates.com				TOMAH VAMC		1-CP-504
									500 E. VETERANS STREET	Building Number	Checked OEI
									TOMAH, WI. 54660	Drawn OEI	Dwg. of

Office of  
Construction  
and Facilities  
Management

Department of  
Veterans Affairs