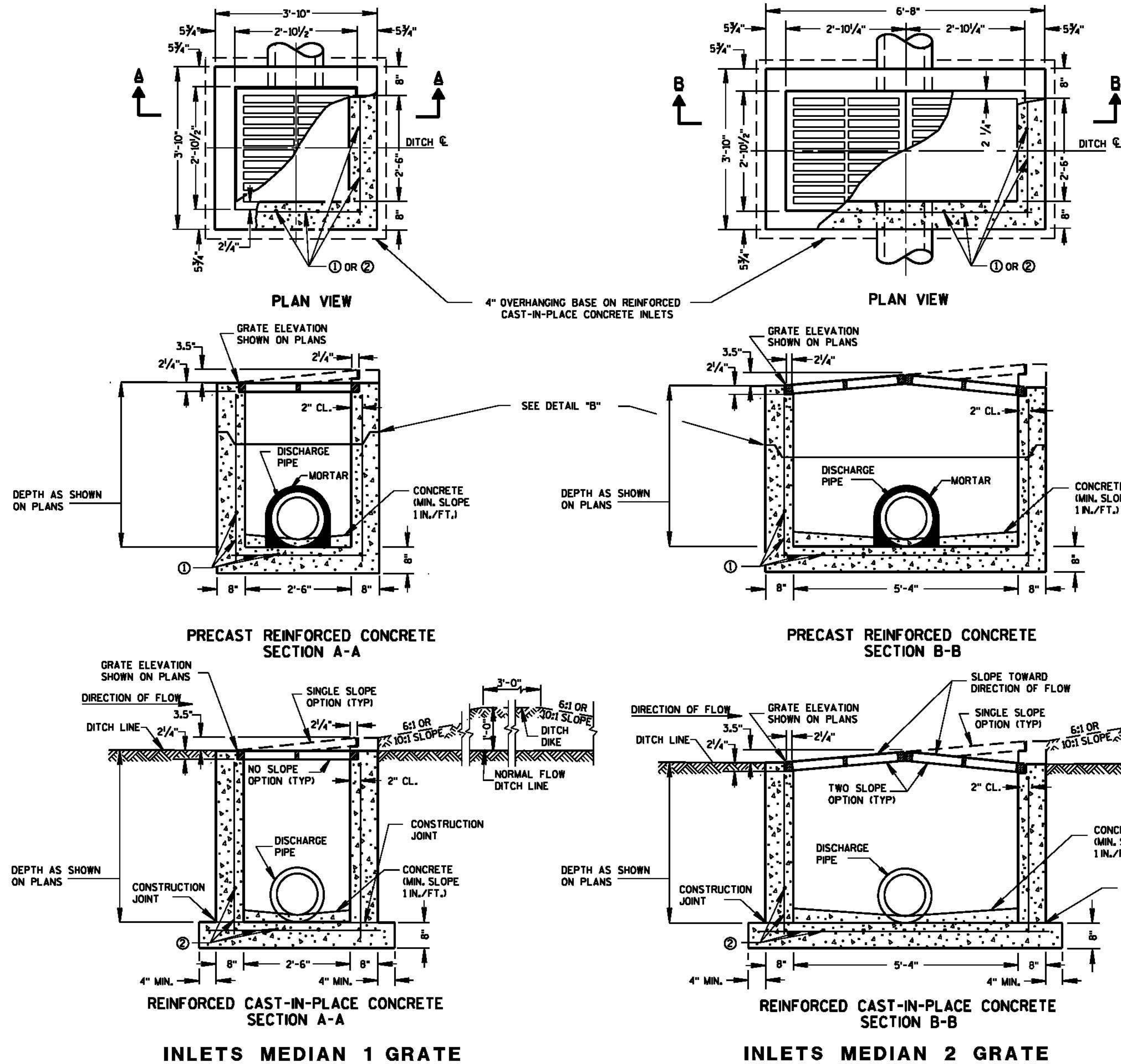


8C8: Inlets Median 1 & 2 Grate



GENERAL NOTES

DETAILS OF CONSTRUCTION, MATERIALS AND WORKMANSHIP NOT SHOWN ON THIS DRAWING SHALL CONFORM TO THE PERTINENT REQUIREMENTS OF THE STANDARD SPECIFICATIONS AND THE APPLICABLE SPECIAL PROVISIONS.

UNLESS OTHERWISE AUTHORIZED IN WRITING BY THE ENGINEER, THE CONTRACTOR SHALL NOT ORDER AND DELIVER PRECAST INLET UNITS REQUIRED FOR THE PROJECT UNTIL A LIST OF SIZES IS FURNISHED BY THE ENGINEER.

DETAILED DRAWINGS FOR PROPOSED ALTERNATE DESIGNS FOR INLETS WHICH MAY INCLUDE PRECAST REINFORCED CONCRETE INLETS, SHALL BE SUBMITTED TO THE ENGINEER FOR APPROVAL PROVIDING THAT SUCH ALTERNATE DESIGNS MAKE PROVISION FOR EQUIVALENT CAPACITY AND STRENGTH.

ALL MEDIAN INLETS ARE DESIGNATED ON THE PLANS AS "INLETS, IG-MS", ETC. THE FIRST NUMBER AND LETTER DESIGNATE THE TYPE OF STRUCTURE, AND THE FOLLOWING LETTERS DESIGNATE THE TYPE OF COVER TO BE USED TO COMPRISE THE COMPLETE UNIT.

ALL BAR STEEL REINFORCEMENT SHALL BE EMBEDDED 2 INCHES CLEAR UNLESS OTHERWISE SHOWN OR NOTED.

PRECAST REINFORCED RISERS SHALL HAVE A TONGUE AND GROOVE JOINT WITH TONGUE UP OR DOWN.

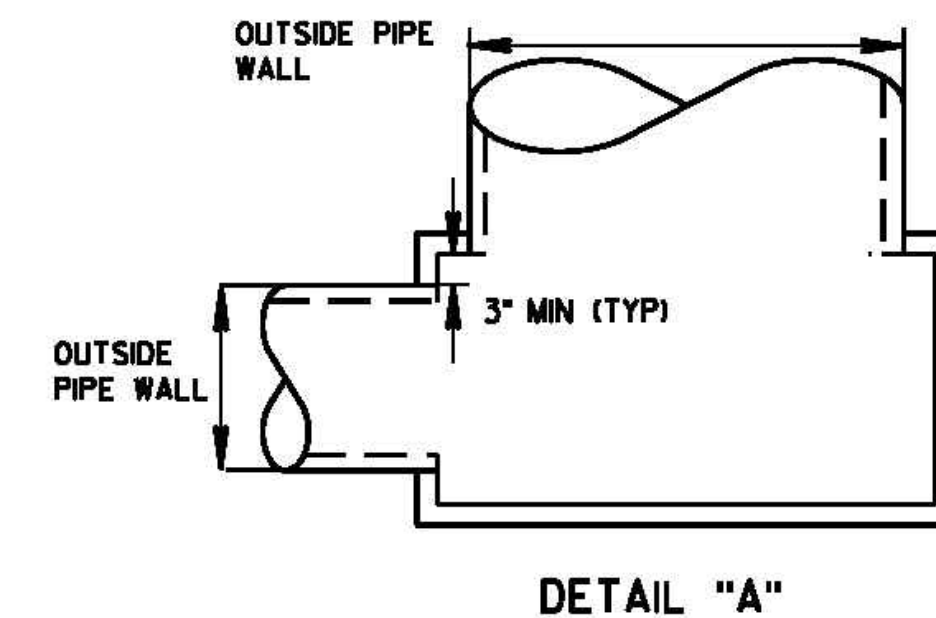
ALL PRECAST INLET UNITS SHALL CONFORM TO THE PERTINENT REQUIREMENTS OF ASTM C 913.

MAXIMUM INSIDE PIPE DIAMETER DETERMINED BY 3" CLEARANCE ON EACH SIDE OF THE OUTSIDE WALL OF THE PIPE, SEE DETAIL "A", ASSUMES PIPE ENTERS PERPENDICULAR TO THE STRUCTURE.

- FOR PRECAST INLETS PROVIDE REINFORCING STEEL IN ACCORDANCE TO ASTM C 913.
- CONTRACTOR TO PROVIDE DRAWING(S) STAMPED BY A PROFESSIONAL ENGINEER FOR STEEL REINFORCING DESIGN FOR CAST-IN-PLACE STRUCTURES.

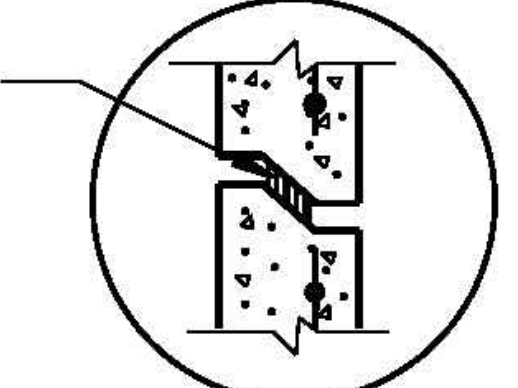
PIPE MATRIX

INLET SIZE	MAXIMUM INSIDE PIPE DIAMETER	
	WIDTH (IN)	LENGTH (IN)
1 GRATE	18	18
2 GRATE	18	42



DETAIL "A"

JOINTS TO BE SEALED WITH A BUTYL RUBBER SEAL PER SEALANT MANUFACTURERS RECOMMENDATIONS CONFORMING TO ASTM C 990 (TYP)



DETAIL "B"

1	INLETS MEDIAN 1 AND 2 GRATE
STATE OF WISCONSIN DEPARTMENT OF TRANSPORTATION	
APPROVED 6/5/2012 DATE FWHA	/S/ Jerry H. Zogg ROADWAY STANDARDS DEVELOPMENT ENGINEER

CONSTRUCTION DOCUMENTS

Revisions:	Date:	CONSULTANTS:	ARCHITECT/ENGINEERS:	Approved: Chief of MH	Approved: Chief of FMS	Drawing Title	Project Name	Project Number
		O'BrienEngineering, Inc.	COX DESIGN ASSOCIATES	Date:	Date:	STANDARD DETAILS: STORM DRAINAGE	CONSTRUCT TWO CLC HOMES	676-324
			ARCHITECTURE PLANNING INTERIORS	Approved: Director	Approved: VA Energy Engineer	Location:		Date
			Austin 5121 Bee Caves Road, Suite 203 Austin, Texas 78746 T: 512 - 327 - 4149 F: 512 - 327 - 7679 bcoc@coxdesignassociates.com	Date:	Date:	TOMAH VAMC 500 E. VETERANS STREET TOMAH, WI. 54660	Building Number	12/16/2016
			Chicago 820 Davis St., Suite 452 Evanston, IL 60201 T: 312 - 454 - 9434 F: 312 - 454 - 9439 bcoc@coxdesignassociates.com				Checked OEI	Drawing Number
							Drawn OEI	1-CU-501
								Dwg. of