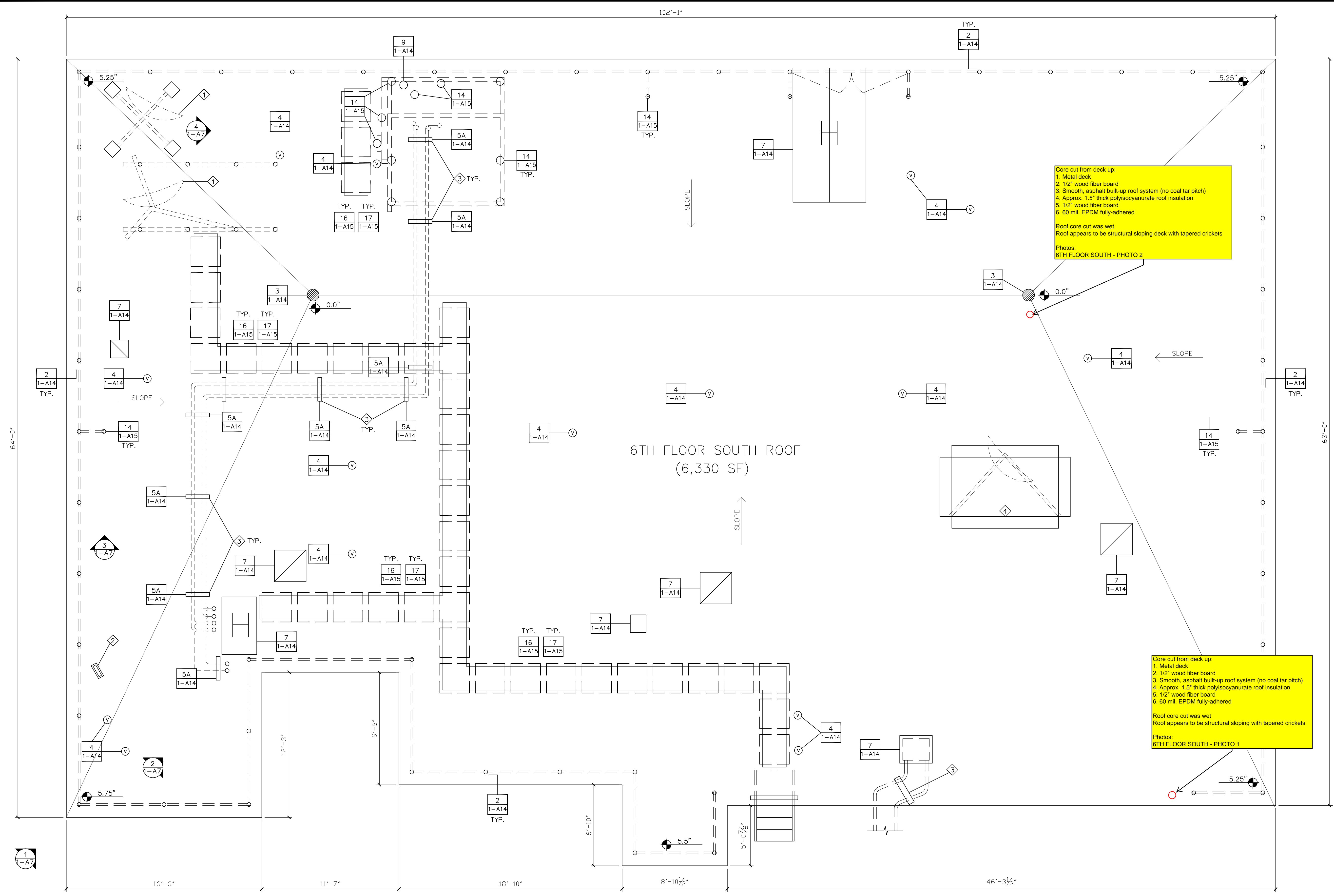


three inches = one foot  
one and one half inches = one foot  
one inch = one foot  
three quarters inch = one foot  
one half inch = one foot  
three eighths inch = one foot  
one quarter inch = one foot  
one eighth inch = one foot



- SYMBOL LEGEND:**
- ROOF PENETRATION
  - ROOF BLOCKING
  - MECHANICAL EQUIPMENT
  - ROUND ROOF PENETRATION
  - ROOF VENT
  - ROOF DRAIN
  - SCUPPER
  - ROOF HATCH
  - ROOF LADDER
  - ROOF TIE-OFF
  - DISH ANTENNA

- KEYED NOTES:**
- 1 REMOVE OBSOLETE DISH ANTENNA SYSTEMS AS IDENTIFIED BY THE VAMC.
  - 2 REMOVE OBSOLETE WINDOW WASHING TIE-BACK ASSEMBLY SYSTEM IN NORTHEAST CORNER OF ROOF.
  - 3 REMOVE EXISTING WOOD ROOF PAD AND PROVIDE NEW ROOF SUPPORT PER DETAIL 5 ON I-A14 FOR SUPPORT OF EXISTING EQUIPMENT. TEMPORARILY SUPPORT EXISTING EQUIPMENT DURING CONSTRUCTION.
  - 4 DISH ANTENNA EQUIPMENT TO REMAIN IS TO BE DISCONNECTED AND TEMPORARILY RELOCATED UNTIL NEW ROOF SYSTEM IS APPLIED AT THAT LOCATION AND THEN REINSTALLED. ALL WORK PERTAINING ROOFING AND ANCHORING IS CONTRACTORS RESPONSIBILITY. COORDINATE WITH VAMC PROJECT MANAGER.

- GENERAL NOTES:**
- CONTRACTOR IS TO ENSURE THAT ALL PERSONNEL WORKING ON THIS PROJECT ARE PROTECTED VIA FALL PROTECTION EQUIPMENT AND PROCEDURES IN ACCORDANCE WITH OSHA SAFETY STANDARDS.
  - ALL DIMENSIONS, INSULATION THICKNESSES AND ROOF SLOPES TO BE FIELD VERIFIED.
  - REMOVE ALL RUBBER WALK PADS.
  - REMOVE EXISTING ROOFTOP MECHANICAL EQUIPMENT AND PIPING SUPPORTS, BRACKETING SUPPORT SYSTEMS WITH TEMPORARY SUPPORTS TO ALLOW ROOF SYSTEM WORK AT THAT LOCATION TO PROCEED. INSTALL NEW SUPPORTS AS INDICATED IN THE DETAILS.
  - REMOVE EXISTING SINGLE-PLY ROOF SYSTEM TO SUBSTRATE.
  - DOCUMENT LOCATION, MARK, REMOVE AND STORE THE EXISTING CATHODIC PROTECTION SYSTEM. PROVIDE NEW CABLING AND ROOF ATTACHMENTS, AND REINSTALL AFTER INSTALLATION OF NEW ROOF ASSEMBLY PER DETAILS SET FORTH ON DRAWING I-A16. REMOVAL AND REINSTALLATION WORK BY A UL-CERTIFIED CONTRACTOR AND VALIGHTNING PROTECTION SPECS.
  - REMOVE EXISTING BASE FLASHING FROM ROOF PERIMETER AND AROUND ALL ROOF PENETRATIONS.

- REMOVE AND DISPOSE OF ALL DEMOLITION DEBRIS MATERIAL OFF-SITE PER VAMC GUIDELINES. REF. TO SPECIFICATION SECTION 01 74 19.
- INSTALL NEW BASE FLASHING AND COUNTER FLASHING AS SHOWN ON ROOF PENETRATION AND PERIMETER WALL DETAILS ON I-A14 AND I-A15.
- INSTALL NEW MODIFIED BITUMEN ROOFING ON ALL ROOF SURFACES THIS SHEET. NEW INSULATION THICKNESS TO AVERAGE R-13 VALUE FOR WHOLE ROOF. REF. TO SPECIFICATION SECTION 07 22 00-2. SLOPE ROOF SURFACE TO DRAINS TO ENSURE POSITIVE DRAINAGE.
- INSTALL COUNTER FLASHING AND SEALANTS AS DETAILED ON I-A14.
- INSTALL NEW ROOF DRAIN STRAINER COVERS.
- EXISTING WALKWAYS TO BE REMOVED AND REPLACED WITH NEW METAL WALKWAYS SIMILAR TO EXISTING 10TH FLOOR ROOF EAST SIDE. SUPPORT PVC SQUARE PIPE INSTALLED @ 4'-0" OC. SEE DETAIL S 16 AND 17 ON I-A15.
- REMOVE DEBRIS, EQUIPMENT AND EXTRA MATERIAL UPON COMPLETION OF WORK, LEAVING ALL SURFACES IN A CLEAN CONDITION.

**SIXTH FLOOR SOUTH ROOF**  
SCALE: 1/4"=1'-0"

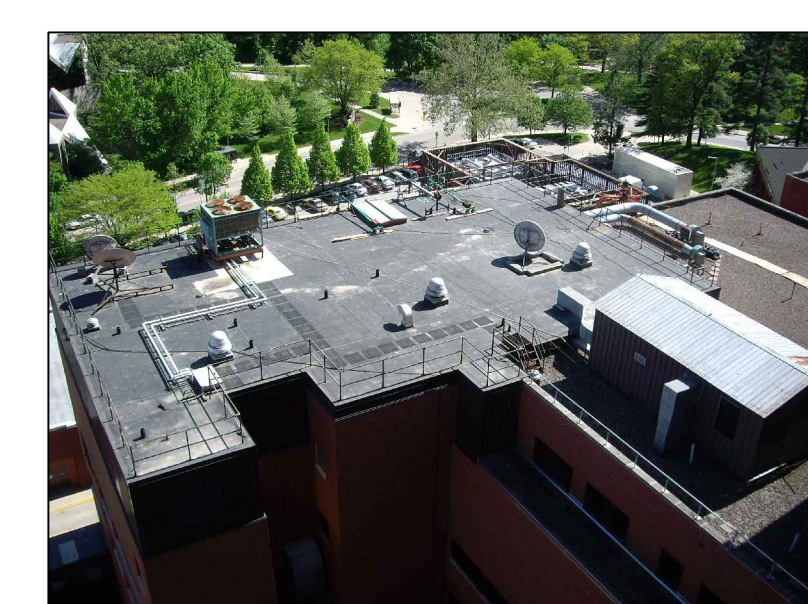


PHOTO # 1



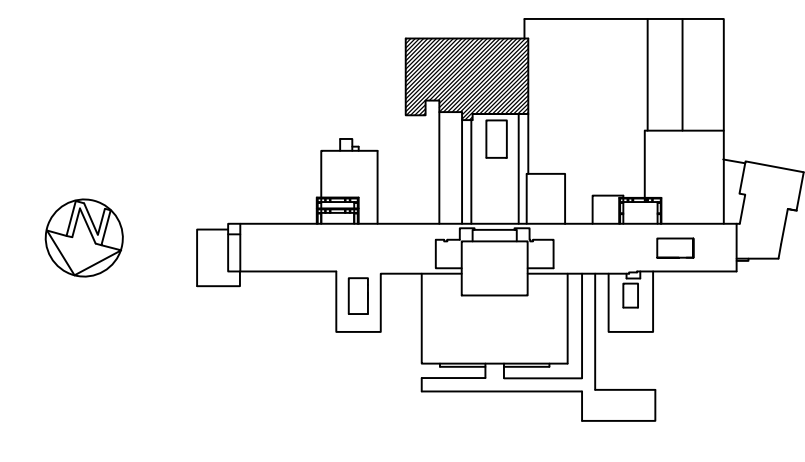
PHOTO # 2



PHOTO # 3



PHOTO # 4



<b>CONSULTANTS:</b>		<b>ARCHITECT/ENGINEERS:</b>		Drawing Title	Project Title	Project Number	Office of Construction and Facilities Management	
Roofing Consultant: Robert L. Dye, LC PO BOX 4581 Overland Park, Kansas, 66204		Industrial Hygiene Consultant: John A. Jurgiel + Associates, Inc. 1810 Craig Road, Suite 207 St. Louis, Missouri 63146		SIXTH FLOOR SOUTH ROOF PLAN	REPLACE MAJOR ROOFS BUILDING # 1	636A8-11-004		
Revisions		Date		Approved: Project Director	Location IOWA CITY VAMC, IOWA	Building Number BLDG # 1	Drawing Number 1-A7	
					Date 03-13-2012	Checked RWT	Drawn REC	Dwg. 8 of 18