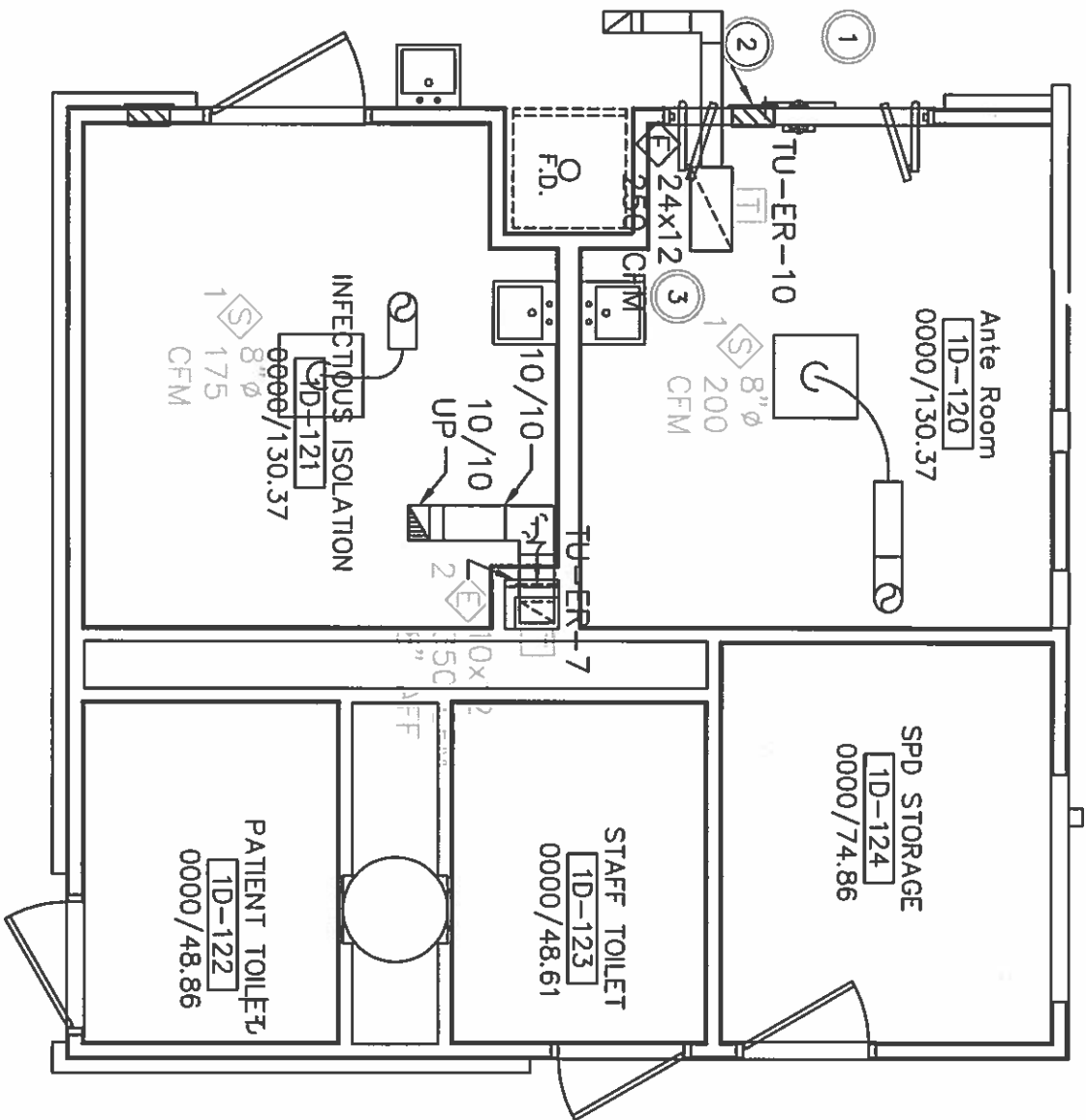


NOTES:

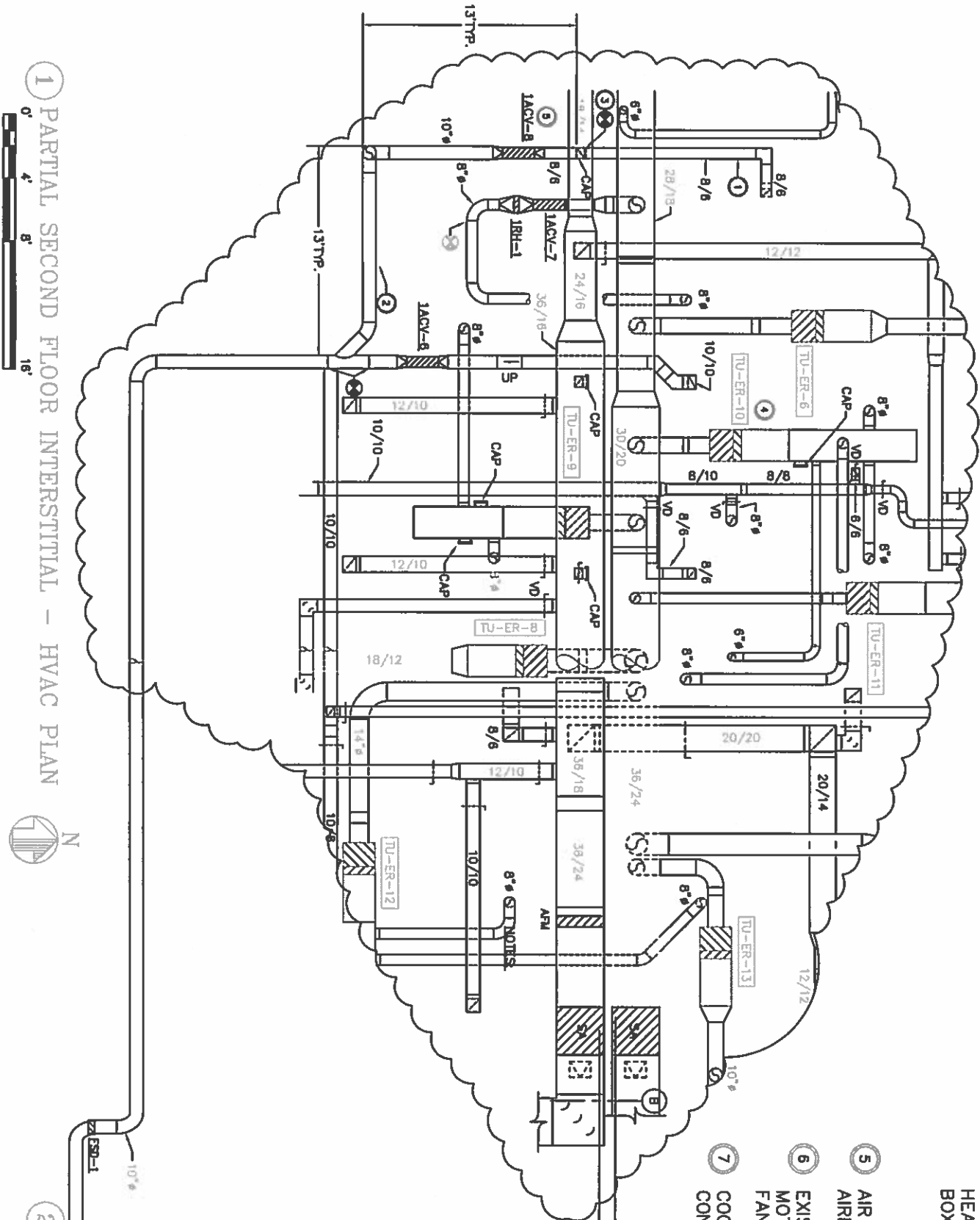
- 1 ISOLATION ROOM MONITOR PANEL. PANEL SHALL MONITOR PRESSURE DIFFERENTIAL BETWEEN ANTE ROOM AND NURSES STATION, AND ANTE ROOM AND ISOLATION ROOM.
- 2 POWER SUPPLY ABOVE CEILING FOR ISOLATION ROOM CONTROLS. COORDINATE INSTALLATION WITH ELECTRICAL CONTRACTOR.
- 3 BALANCE EXISTING DIFFUSER TO CFM SHOWN.



NOTES:

- 1 EXISTING RETURN DUCT, DISCONNECT FROM RETURN TRUNK AND REUSE AS EXHAUST.
- 2 NEW EXHAUST DUCT.
- 3 CAP DUCT IMMEDIATELY UPON REMOVAL OF DUCT SECTION TO BE DEMOLISHED. SHUTDOWNS OF EQUIPMENT FOR DISCONNECTING AND CAPPING DUCTS MUST BE COORDINATED WITH OWNER. RECONNECTION OF NEW DUCT TO EXISTING MAY BE DONE ONLY AFTER ALL DEMOLITION IS COMPLETE AND AREA IS CLEAN AND DUST FREE.
- 4 RESET TERMINAL UNIT AIRFLOW AS FOLLOWS:
SET TERMINAL BOX TO CONSTANT VOLUME.
HEATING WATER GPM SHALL REMAIN UNCHANGED.
BOXES NOT LISTED HAVE NO CHANGES.

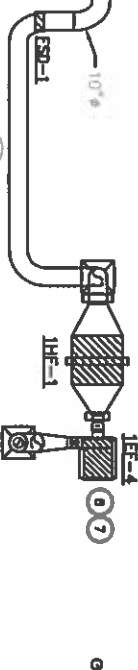
TU-ER-10 580 CFM
- 5 AIR CONTROL VALVE. SEE SCHEDULE FOR AIRFLOW.
- 6 EXISTING EXHAUST FAN ON ROOF. REPLACE MOTOR WITH NEW 1.5 HP MOTOR. UPDATE FAN NAMEPLATE FOR NEW MOTOR INFORMATION.
- 7 COORDINATE INSTALLATION WITH ELECTRICAL CONTRACTOR.



1 PARTIAL SECOND FLOOR INTERSTITIAL – HVAC PLAN



2 C WING PARTIAL ROOF – HVAC PLAN



13

14

D

C

7

6

5

4

3

2

1

