

ONE INCH = FORTY FEET (1" = 40')

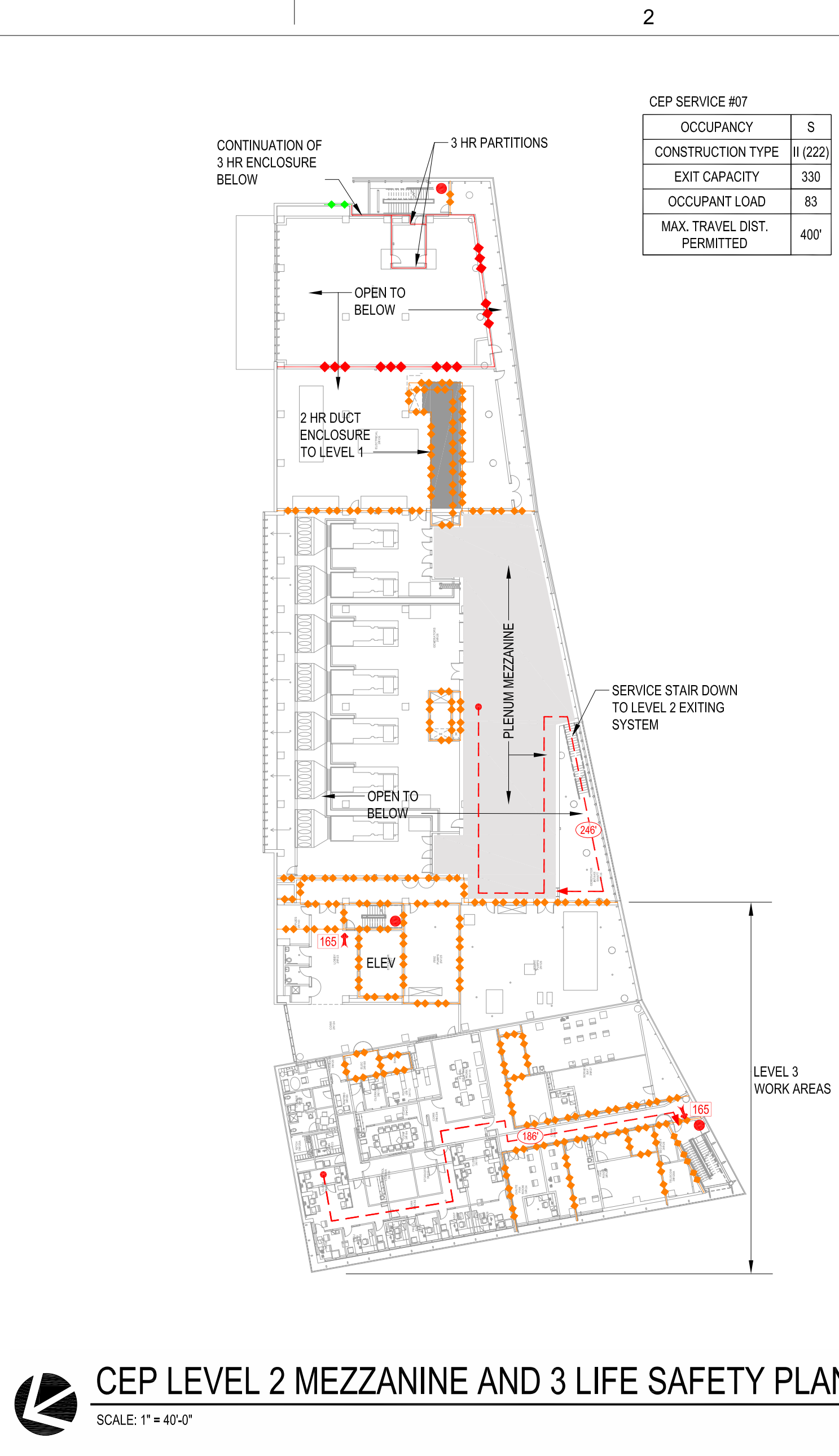
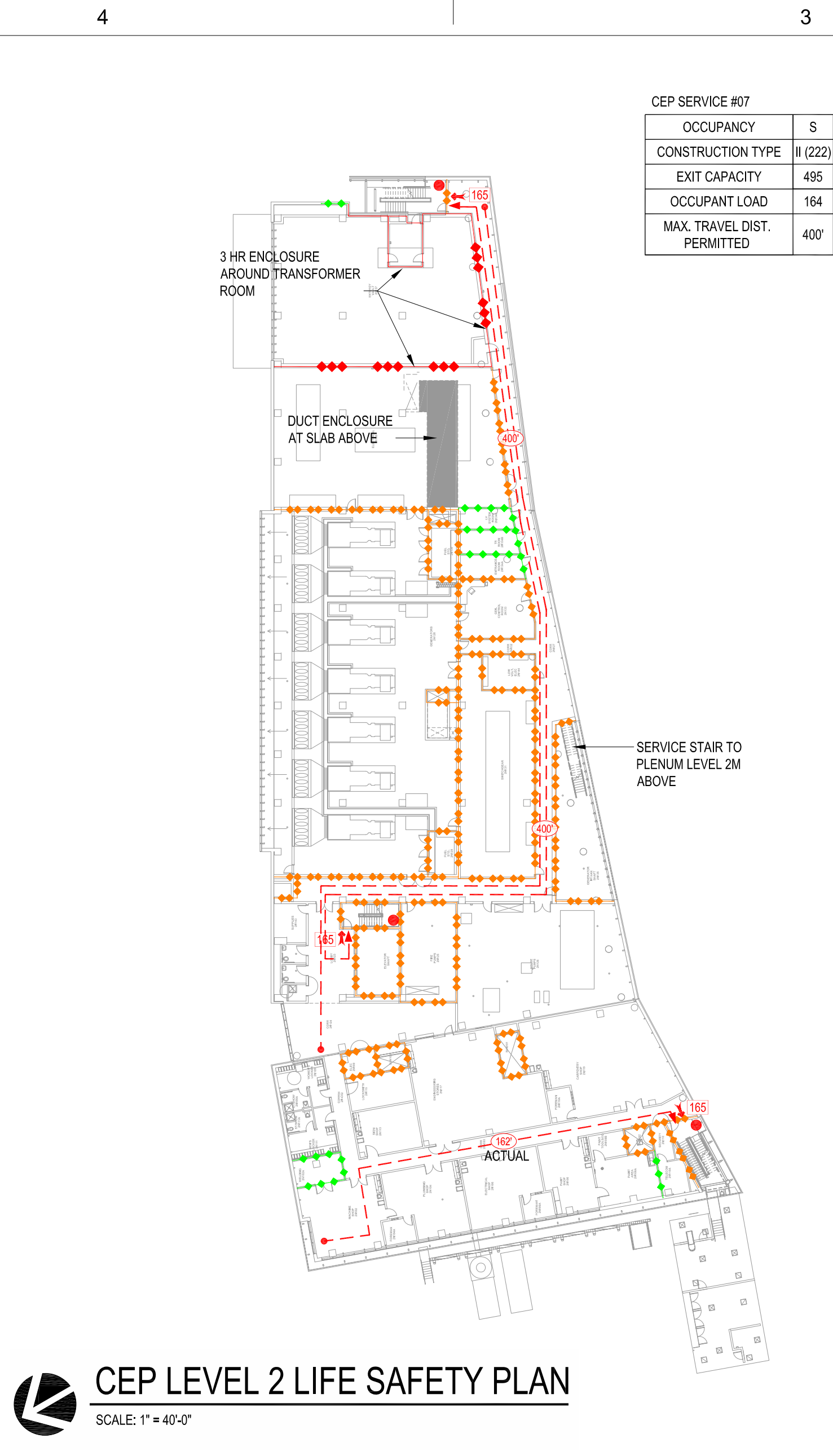
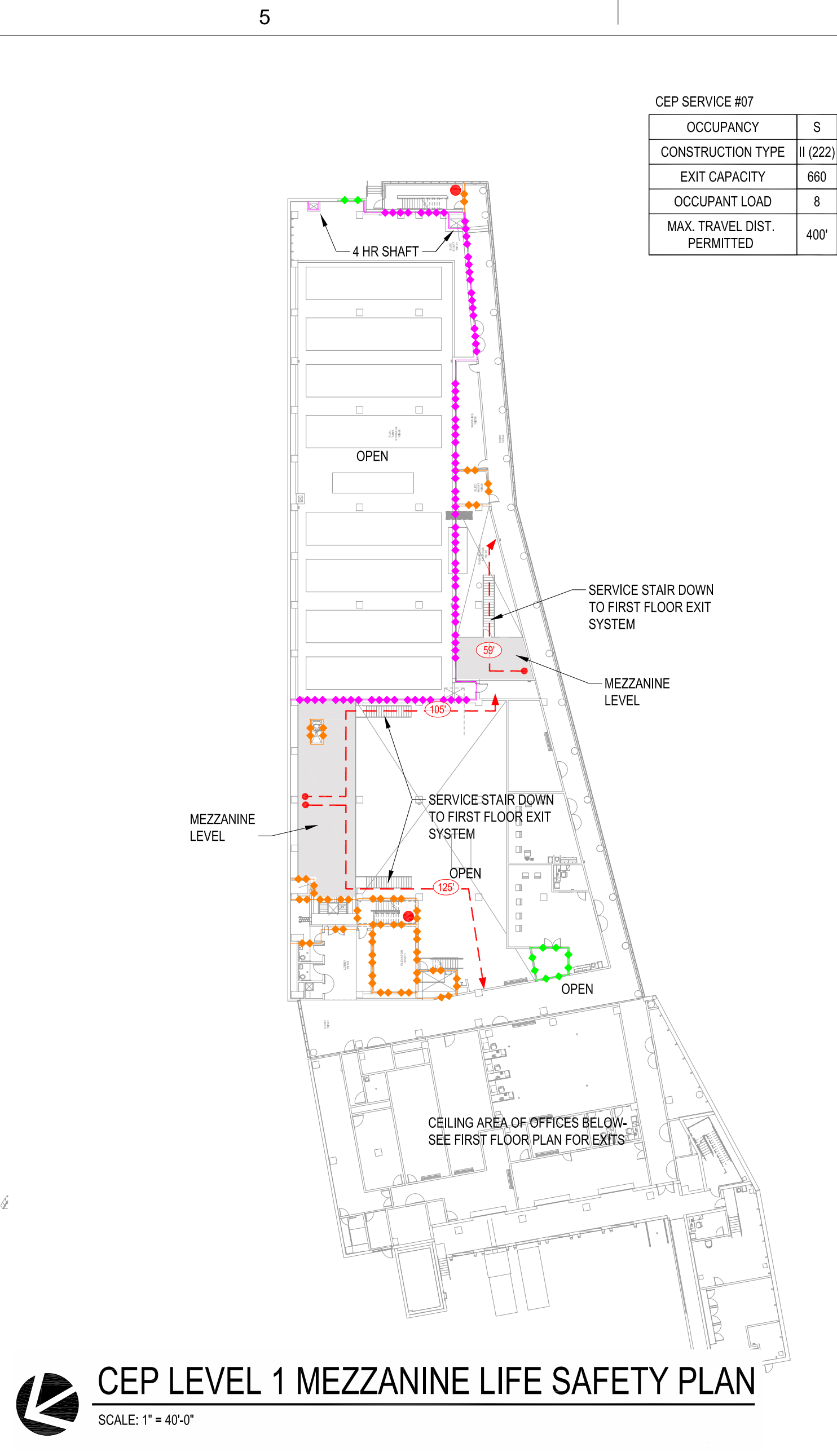
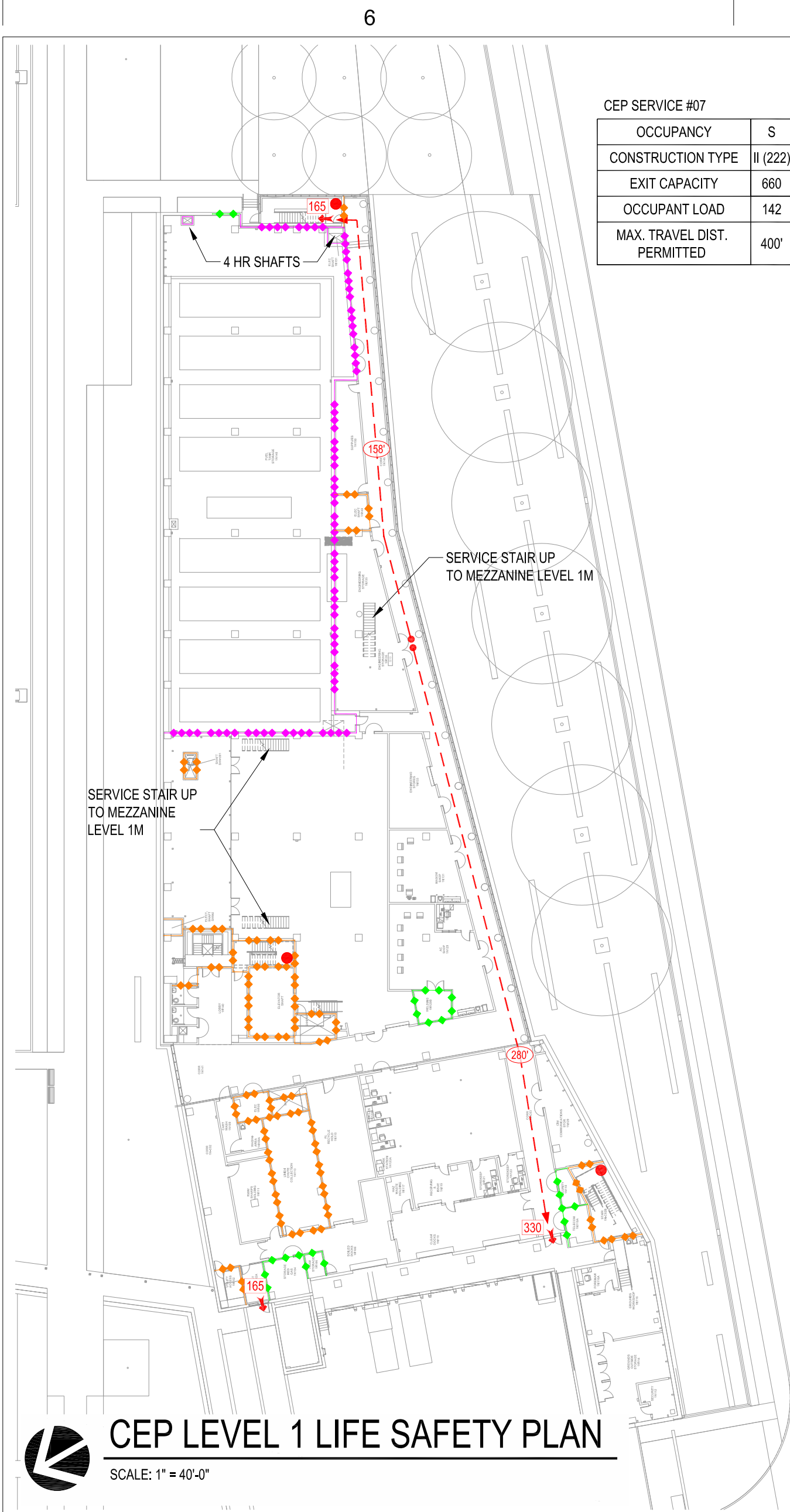
ONE AND ONE HALF INCHES = ONE FOOT

ONE HALF INCH = ONE FOOT

ONE QUARTER INCH = ONE FOOT

ONE EIGHT INCH = ONE FOOT

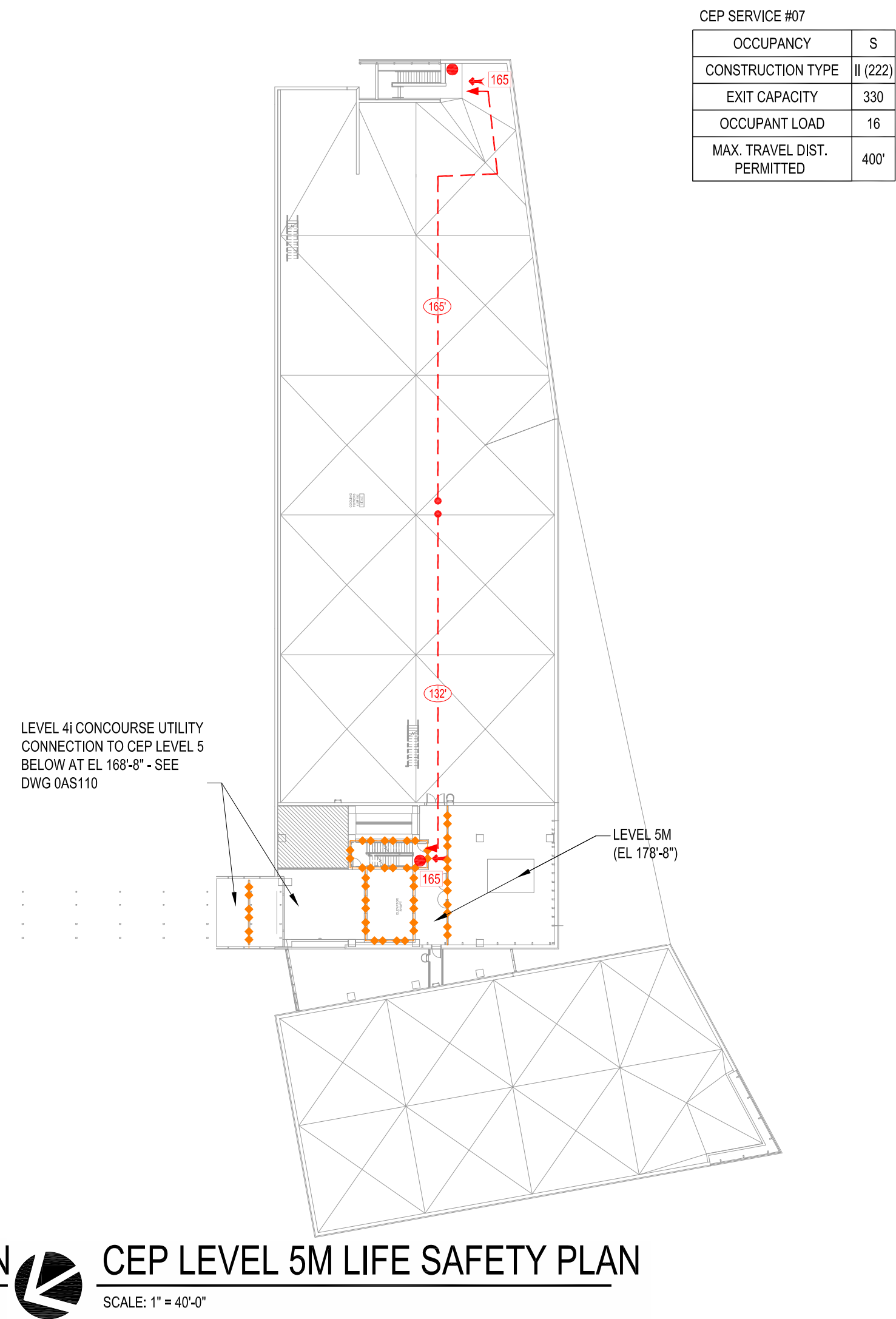
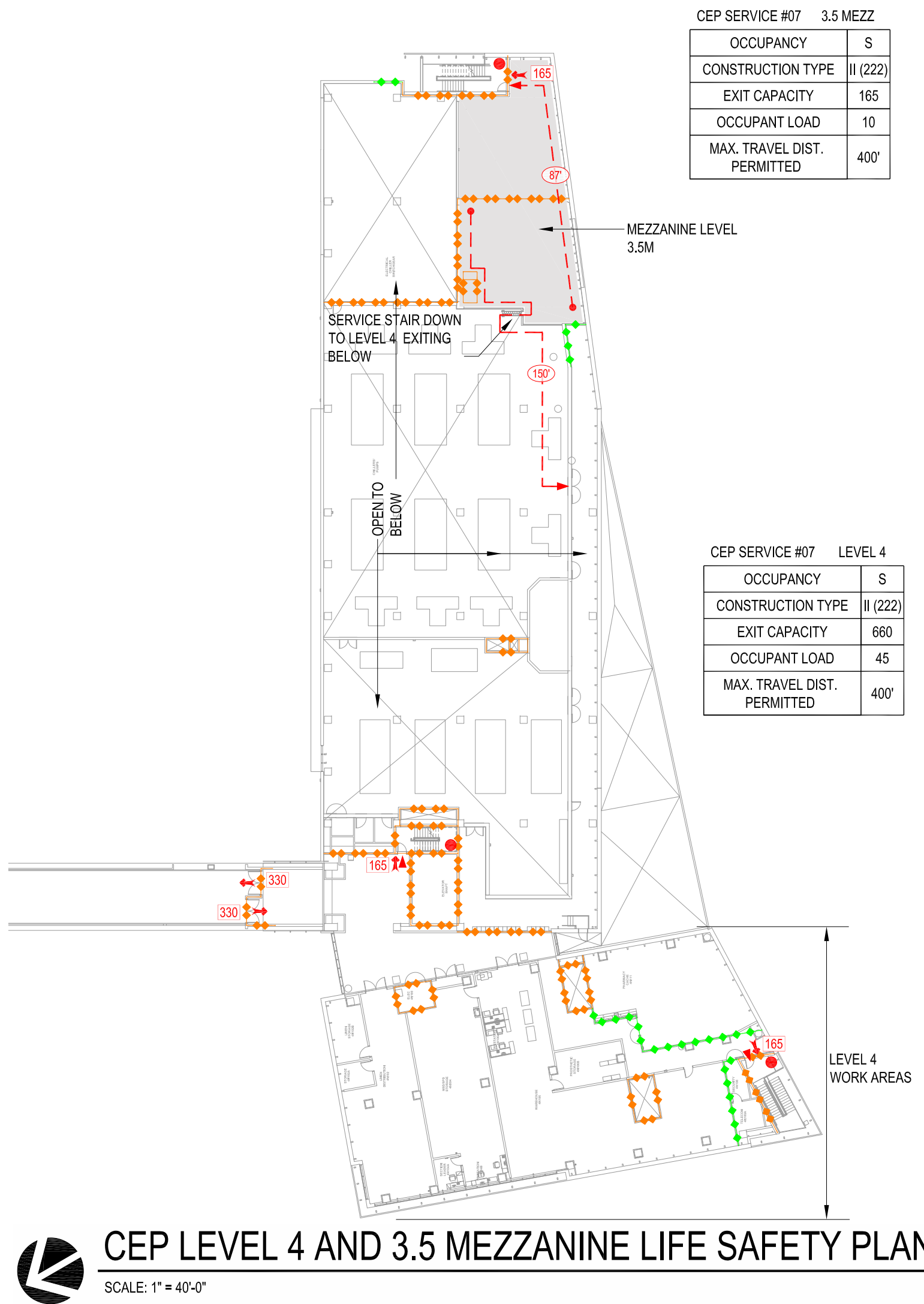
ONE SIXTEENTH INCH = ONE FOOT



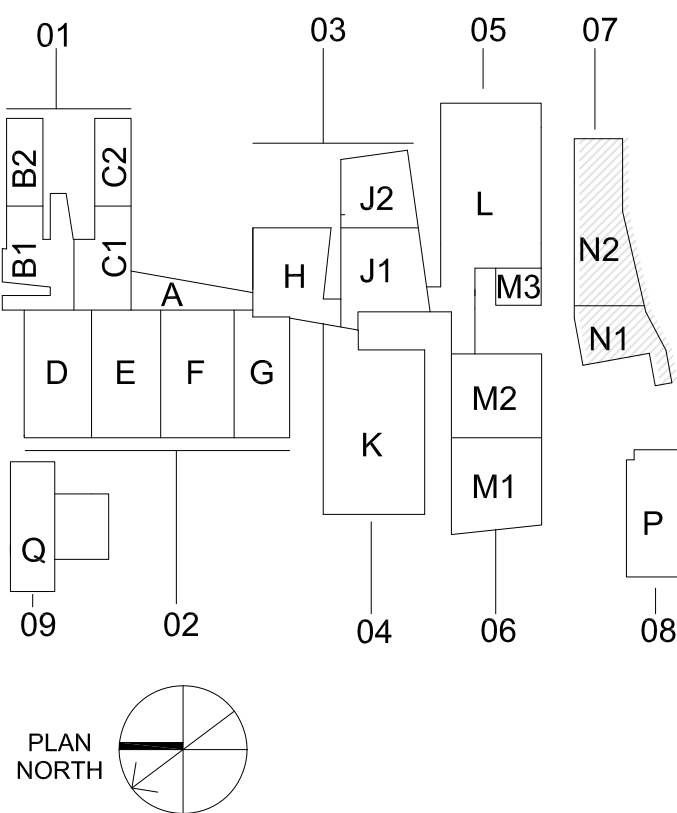
SYMBOL KEY	
	SMOKE PARTITION
	GLASS/SPRINKLER 2-HOUR ASSEMBLY (DOUBLE LINE)
	GLASS/SPRINKLER 1-HOUR ASSEMBLY (SINGLE LINE)
	1-HOUR RATED WALL
	2-HOUR RATED WALL
	3-HOUR RATED WALL
	4-HOUR RATED WALL
	1-HOUR SMOKE BARRIER
	2-HOUR SMOKE BARRIER
	MAXIMUM PERMITTED TRAVEL DISTANCE
	FIRE EXTINGUISHER (2A:10B:C)
	STANDPIPE HOSE OUTLET
	HORIZONTAL EXIT
	EXIT FLOW AND CAPACITY
	SUITE (LETTER INDICATES SUITE DESIGNATION)
	SMOKE RESISTANT CORRIDOR >= 8 FEET
	SMOKE RESISTANT CORRIDOR < 8 FEET

NOTE 1: DETAILED OCCUPANT LOAD AND EXIT CAPACITY CALCULATIONS ARE PROVIDED IN THE FIRE PROTECTION AND LIFE SAFETY ANALYSIS.

NOTE 2: FURTHER DESCRIPTION REGARDING THE BUILDING CLASSIFICATIONS, CONSTRUCTION TYPES AND FIRE RESISTANCE RATED SMOKE BARRIER WALLS IS INCLUDED IN THE NARRATIVE AND THE FIRE PROTECTION AND LIFE SAFETY ANALYSIS.



Key Plan




THIS IS A REPRESENTATION OF THE DESIGN CONCEPT.

IT SHOULD NOT BE CONSIDERED A DEFINITIVE PLAN FOR THE EXACT LOCATION OF THE PROTECTION FEATURES REPRESENTED. SEE THE APPROPRIATE PLANS FOR THE SPECIFIC DISCIPLINE FOR THE EXACT LOCATIONS.

CONSULTANTS:	
DESMAN ASSOCIATES / PARKING	
CODE CONSULTANTS, INC. / CODE CONSULTANT	
THE SEXTANT GROUP / AV & ACOUSTICAL	
HAMMER DESIGN ASSOCIATES / FOOD SERVICE	
PYBURN & ODOM / ABATEMENT	
TATA & HOWARD / TANK CONSULTANT	
I.S.C. GROUP, INC. / IRRIGATION	
DAN EUSER WATER ARCHITECTURE, INC. / WATER FEATURE	
REVISIONS:	DATE

ARCHITECT/ENGINEERS:
studio **NOVA**
SCHRENK & PETERSON CONSULTING ENGINEERS / CIVIL
KORDA/NEMETH ENGINEERING / STRUCTURAL
BR+A CONSULTING ENGINEERS / MECH. ELECT. PLUMBING, LOW VOLTAGE
ARCHITECTURAL ENGINEERING / PLUMBING
SCALES ASSOCIATES / FIRE PROTECTION

DRAWING TITLE BLDG 07 (CEP) LIFE SAFETY PLANS		PROJECT TITLE SLVHCS REPLACEMENT MEDICAL CENTER PROJECT		PROJECT NUMBER 629-HS2-401	BUILDING NUMBER
APPROVED: PROJECT DIRECTOR <i>Todd J. Anderson</i>		LOCATION NEW ORLEANS, LOUISIANA		DOCUMENT SET PACKAGE WP_08	
		DATE February 29, 2012		CHECKED NF	DRAWN PMB/MS
		DRAWING NUMBER 0AS108			
CONSTRUCTION DOCUMENTS 1 FULLY SPRINKLERED					
OFFICE OF CONSTRUCTION AND FACILITIES MANAGEMENT  Department of Veterans Affairs					