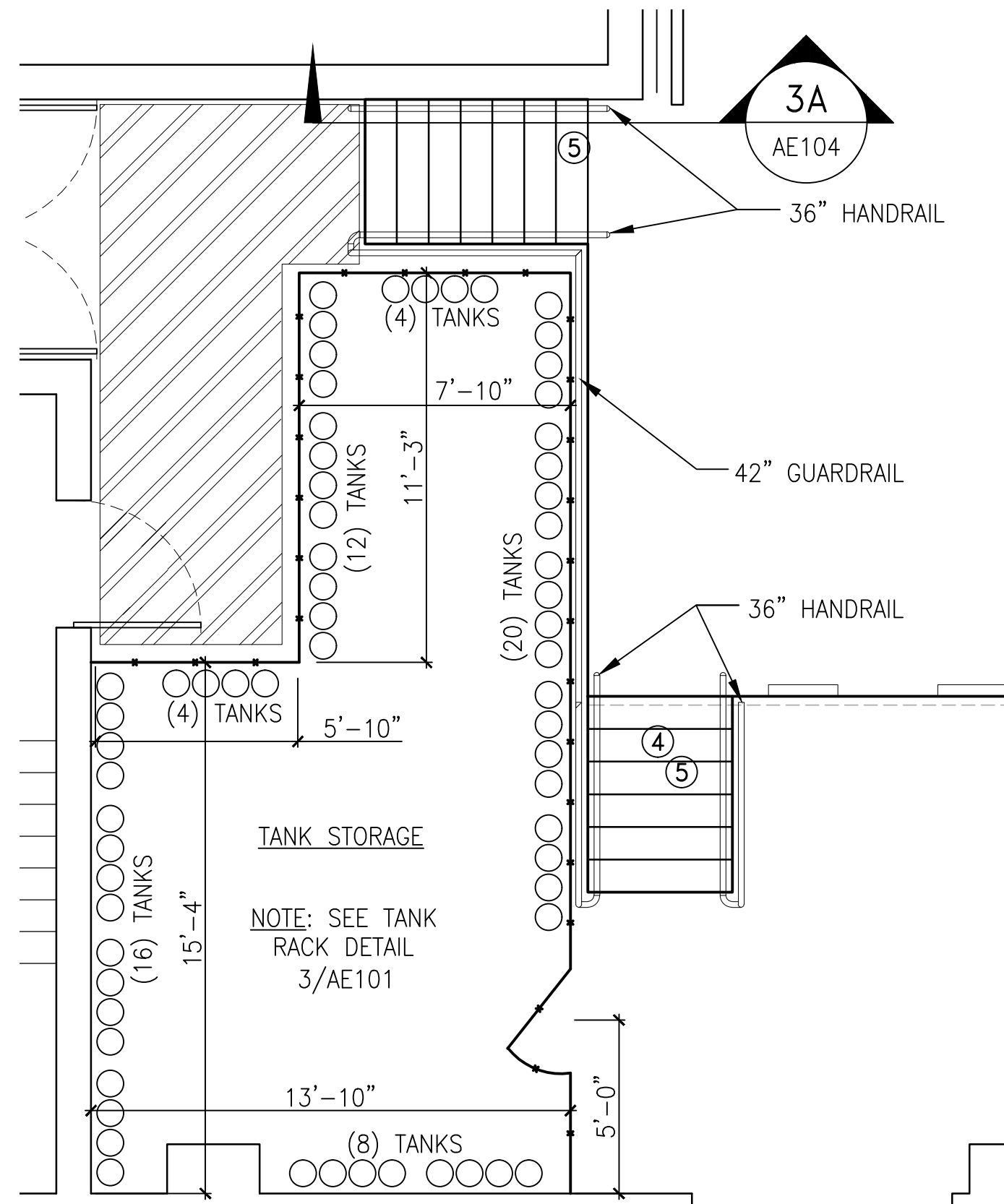
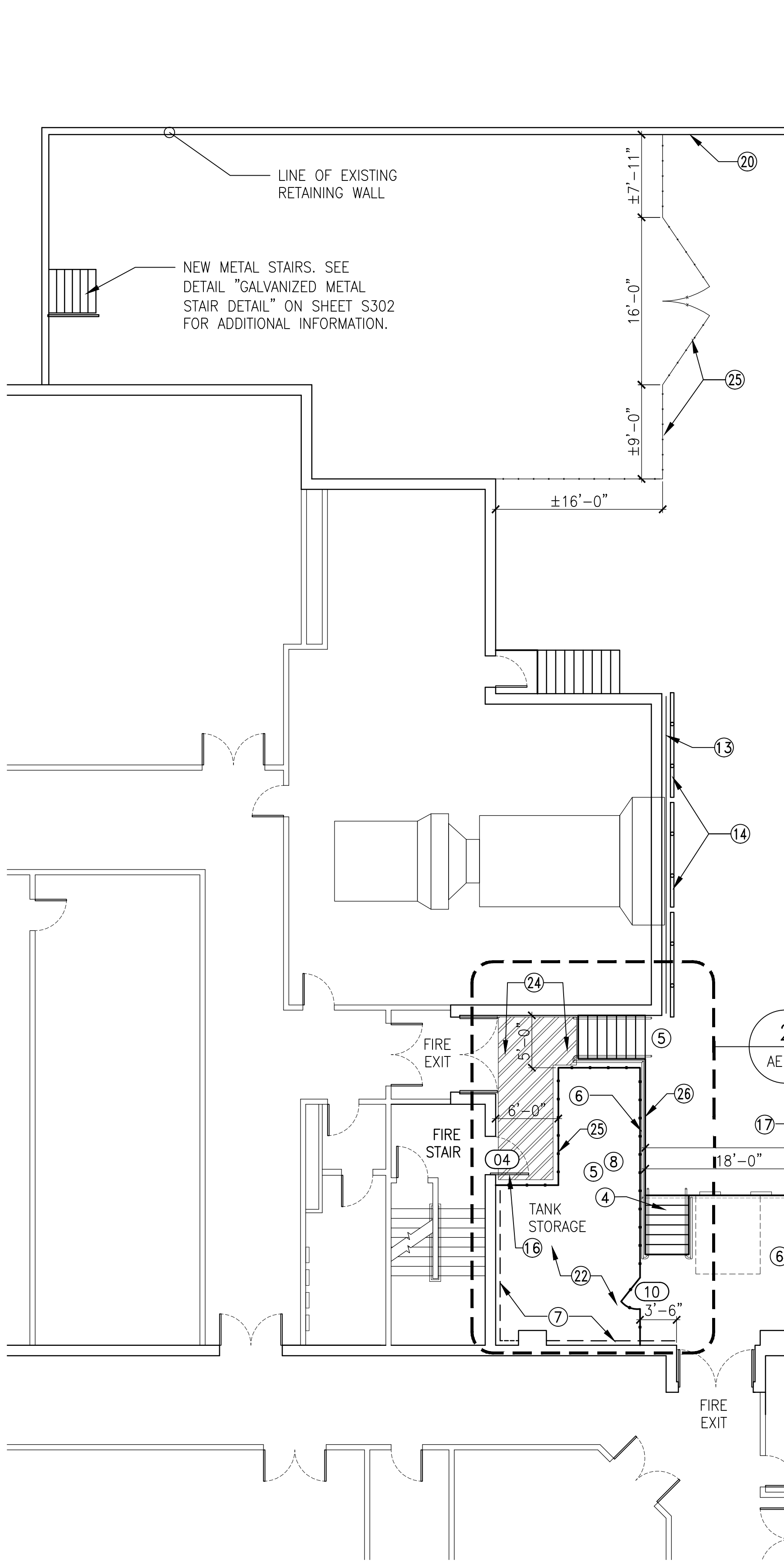
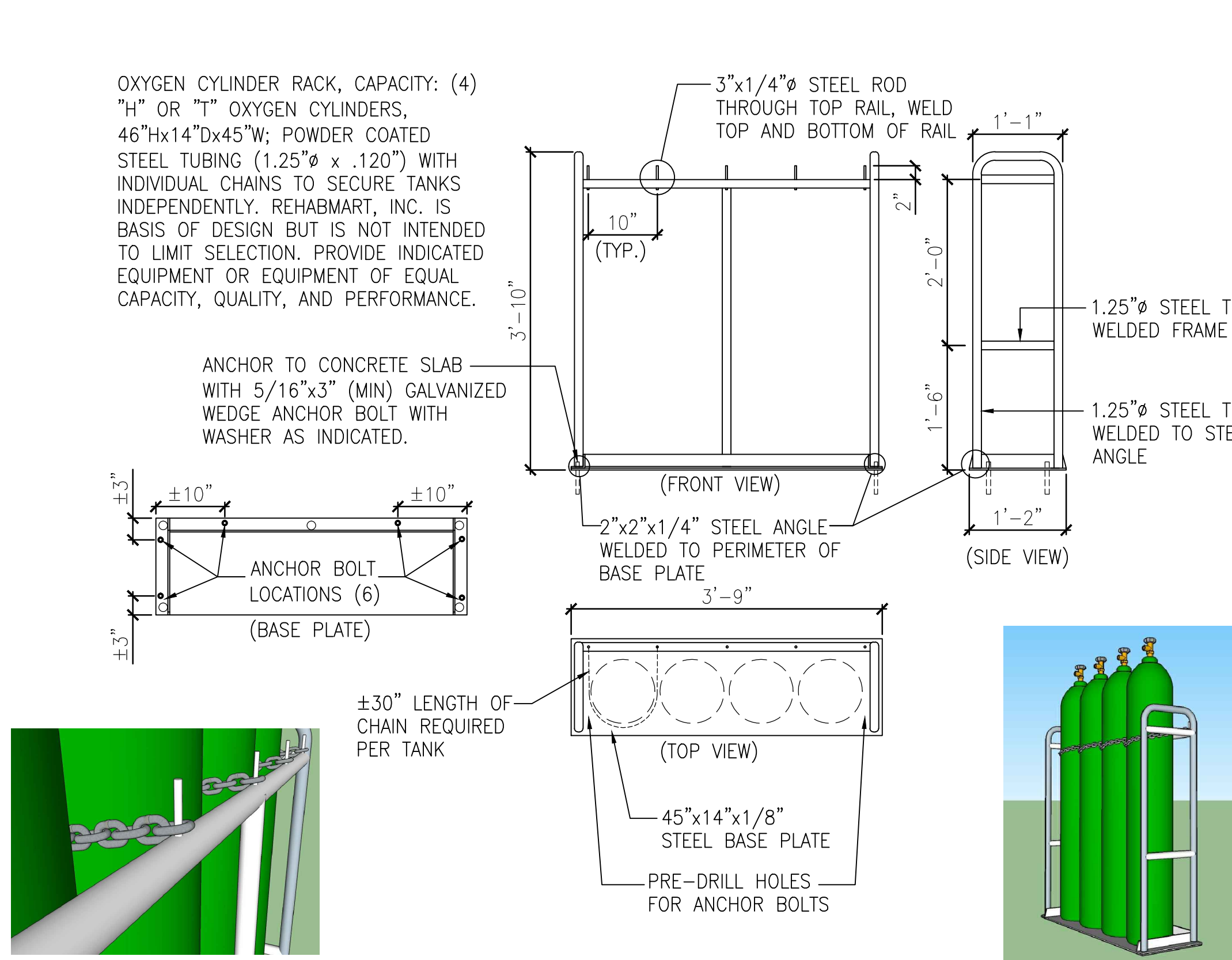


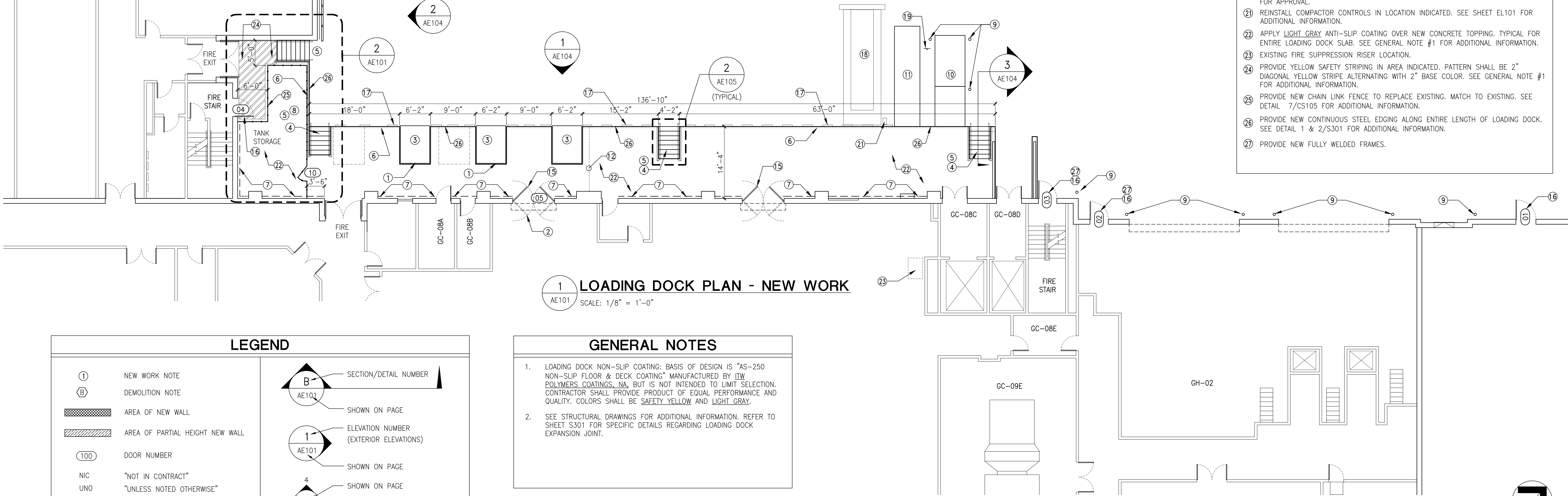
THREE INCHES = ONE FOOT
ONE AND ONE HALF INCHES = ONE FOOT
ONE INCH = ONE FOOT
THREE QUARTERS INCH = ONE FOOT
ONE HALF INCH = ONE FOOT
THREE EIGHTHS INCH = ONE FOOT
ONE QUARTER INCH = ONE FOOT
ONE EIGHTH INCH = ONE FOOT



2 ENLARGED PLAN - NEW WORK
AE101 SCALE: 1/4" = 1'-0"



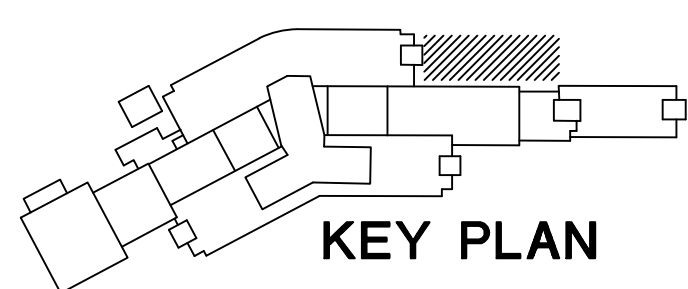
3 TANK STORAGE RACK DETAILS
AE101 SCALE: 3/4" = 1'-0"



1 LOADING DOCK PLAN - NEW WORK
AE101 SCALE: 1/8" = 1'-0"

LEGEND	
①	NEW WORK NOTE
Ⓟ	DEMOLITION NOTE
	AREA OF NEW WALL
	AREA OF PARTIAL HEIGHT NEW WALL
100	DOOR NUMBER
NIC	"NOT IN CONTRACT"
UNO	"UNLESS NOTED OTHERWISE"
LF	"LINEAR FEET"
ⓐ	PHOTO DETAIL
	SECTION/DETAIL NUMBER
	ELEVATION NUMBER (EXTERIOR ELEVATIONS)
	SHOWN ON PAGE
	SHOWN ON PAGE
	SHOWN ON PAGE
	ELEVATION NUMBER (INTERIOR ELEVATIONS)

GENERAL NOTES	
1.	LOADING DOCK NON-SLIP COATING: BASIS OF DESIGN IS "AS-250 NON-SLIP FLOOR & DECK COATING" MANUFACTURED BY ITW POLYMERS COATINGS, NA, BUT IS NOT INTENDED TO LIMIT SELECTION. CONTRACTOR SHALL PROVIDE PRODUCT OF EQUAL PERFORMANCE AND QUALITY. COLORS SHALL BE SAFETY YELLOW AND LIGHT GRAY.
2.	SEE STRUCTURAL DRAWINGS FOR ADDITIONAL INFORMATION. REFER TO SHEET S301 FOR SPECIFIC DETAILS REGARDING LOADING DOCK EXPANSION JOINT.



KEY PLAN

FINAL SUBMISSION

CONSULTANTS:		ARCHITECT/ENGINEERS:		Drawing Title		Project Title		Project Number		Office of Construction and Facilities Management Department of Veterans Affairs	
				LOADING DOCK NEW WORK		CORRECT SAFETY DEFICIENCIES AT LOADING DOCK		526-13-108			
						Building Number		N/A			
						Drawing Number		AE101			
Revisions:		Date		Approved Project Director		Location		Dwg.			
						11/07/2014		Checked RLD			
								Drawn JMA			
								21 of 38			