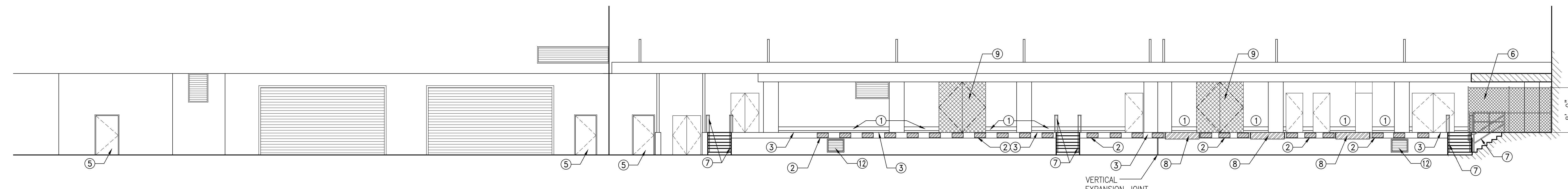
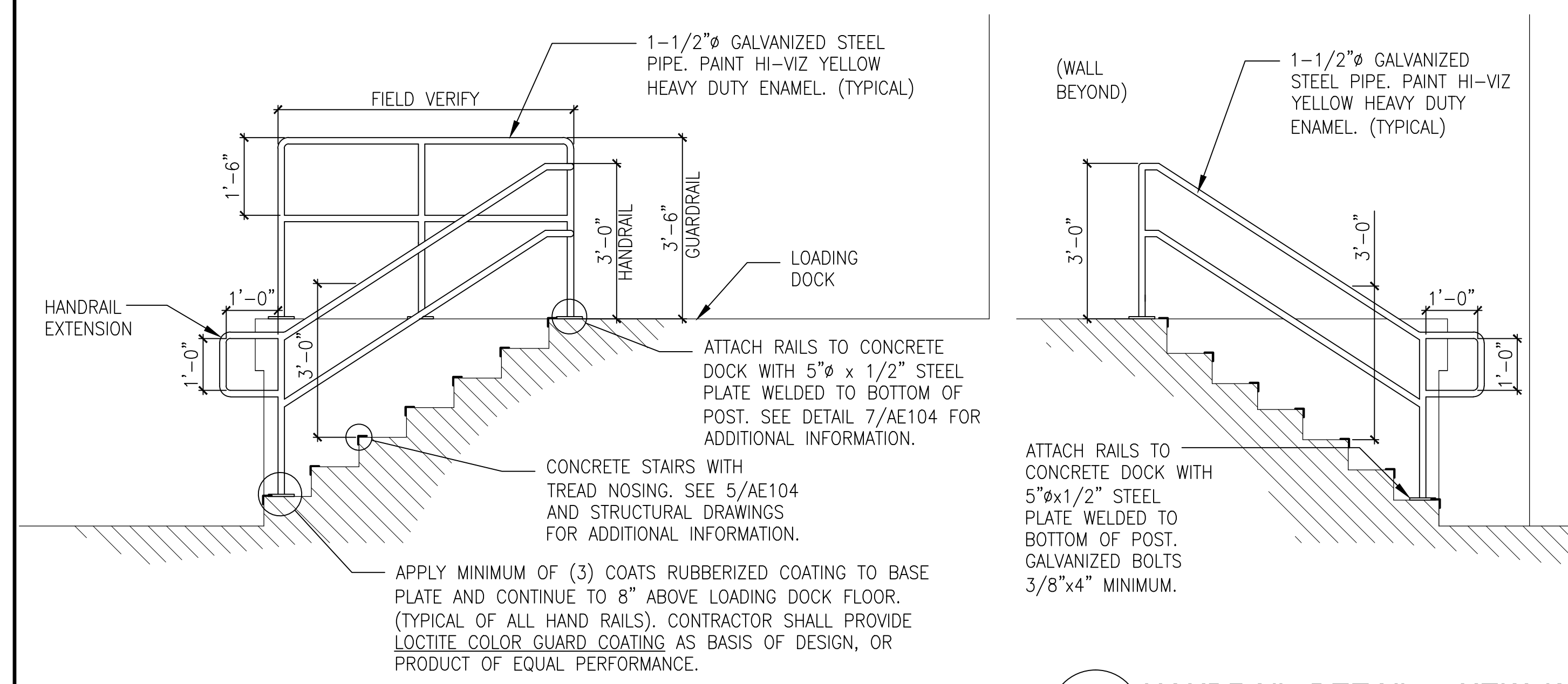


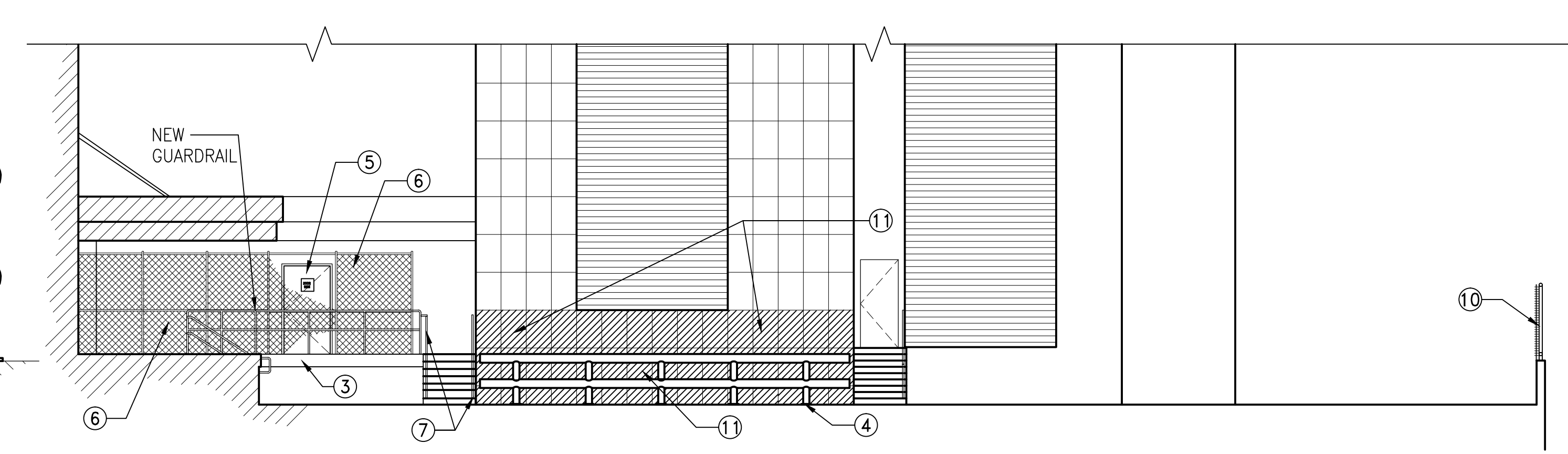
THREE INCHES = ONE FOOT
ONE AND ONE HALF INCHES = ONE FOOT
ONE INCH = ONE FOOT
THREE QUARTERS INCH = ONE FOOT
ONE HALF INCH = ONE FOOT
THREE EIGHTHS INCH = ONE FOOT
ONE QUARTER INCH = ONE FOOT
ONE EIGHTH INCH = ONE FOOT



1 ELEVATION - LOADING DOCK - NEW WORK
AE104 SCALE: 1/8" = 1'-0"



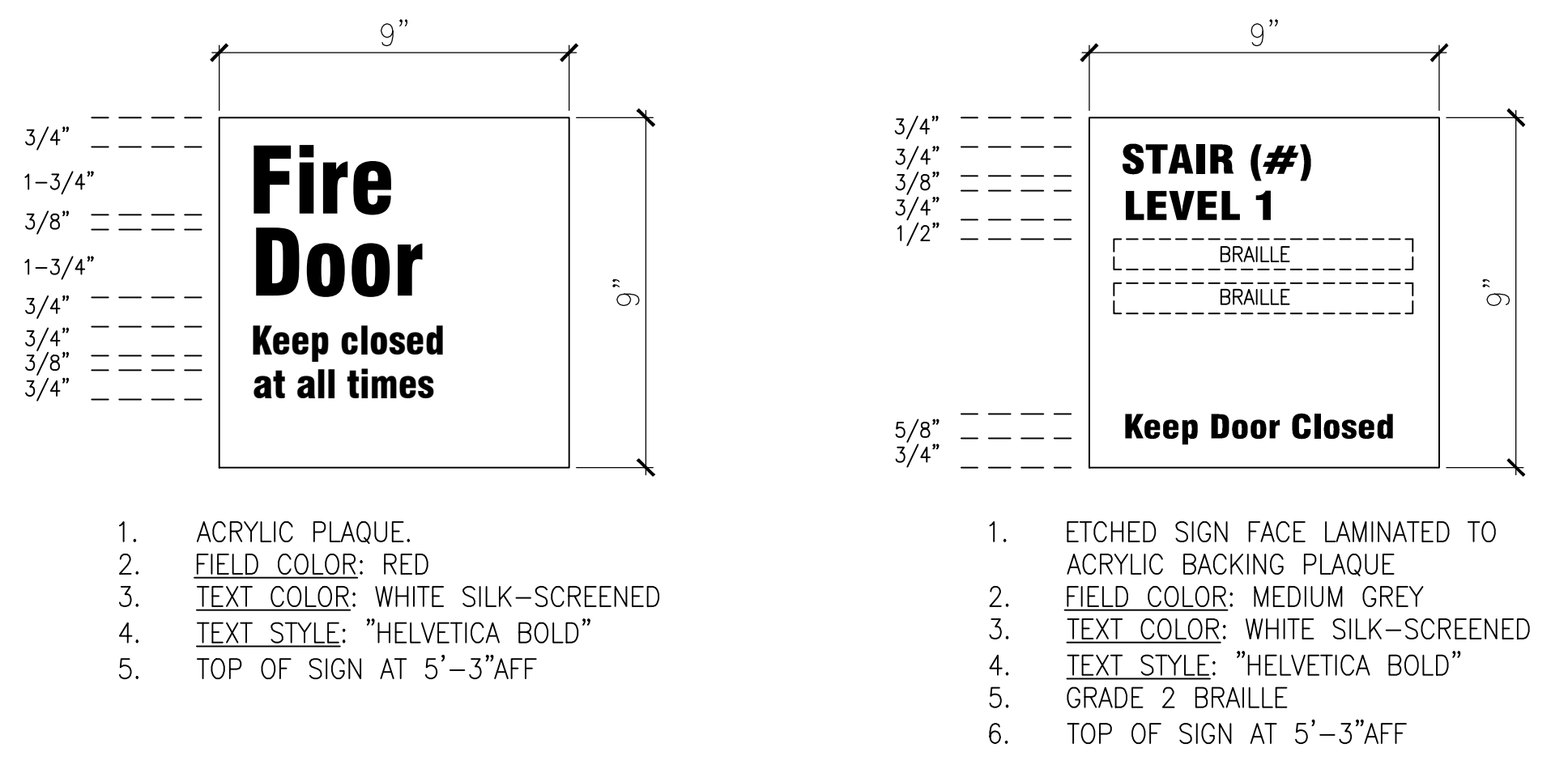
3A HANDRAIL DETAIL - NEW WORK
AE104 SCALE: NOT TO SCALE



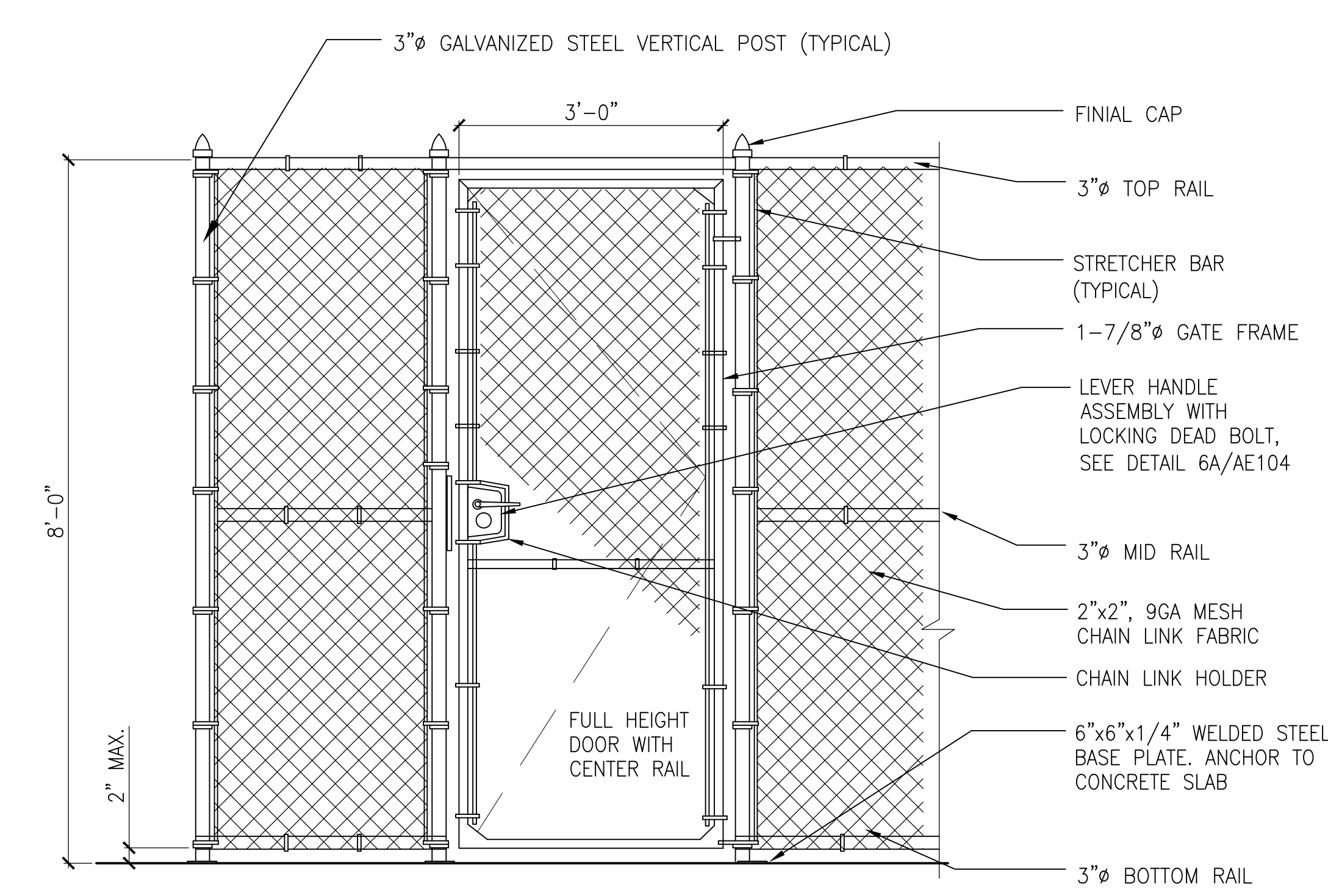
2 ELEVATION - LOADING DOCK - NEW WORK
AE104 SCALE: 1/8" = 1'-0"

- ### NEW WORK NOTE SCHEDULE
- 1 PROVIDE NEW WALL MOUNTED PROTECTIVE BUMPERS AS INDICATED. SEE DETAIL 6/QS101 FOR ADDITIONAL INFORMATION.
 - 2 PROVIDE NEW HEAVY DUTY DOCK BUMPERS ALONG EDGE OF LOADING DOCK. SEE DETAIL 7/QS101 FOR ADDITIONAL INFORMATION.
 - 3 "C" CHANNEL PROTECTIVE EDGING IS PROVIDED ALONG ENTIRE LENGTH OF LOADING DOCK. SEE STRUCTURAL DRAWING S301 FOR ADDITIONAL INFORMATION. APPLY SAFETY YELLOW ANTI-SLIP COATING PER GENERAL NOTE #1 ON SHEET AE101 PRIOR TO INSTALLATION OF DOCK BUMPERS.
 - 4 PROVIDE NEW HEAVY DUTY TRAFFIC GUARDRAIL IN FRONT OF WALL AS INDICATED. SEE DETAIL 5/QS101 FOR ADDITIONAL INFORMATION.
 - 5 PROVIDE NEW HOLLOW METAL INSULATED (HM/INSUL) DOOR AND SIGN. SEE DETAIL 4/AE104 FOR ADDITIONAL INFORMATION.
 - 6 PROVIDE NEW METAL CHAIN LINK CAGE. SEE SHEET AE101 & 6/AE104 FOR ADDITIONAL INFORMATION.
 - 7 PROVIDE NEW STEEL HANDRAILS AS INDICATED. SEE DETAILS 3 & 3A/AE104 FOR ADDITIONAL INFORMATION.
 - 8 NEW LOADING DOCK LEVELER. SEE DETAIL 4/QS101 FOR ADDITIONAL INFORMATION.
 - 9 PROVIDE SWINGING SECURITY DOORS AT EXISTING OPENINGS.
 - 10 PROVIDE NEW "HEDGELINK" SLATS WITHIN EXISTING CHAIN LINK FENCING ALONG RETAINING WALL. HEIGHT TO BE 6'-0", LENGTH AS INDICATED ON CIVIL DRAWING (CS101). CONTRACTOR SHALL PROVIDE SLATS MANUFACTURED BY PEXCO, INC. BLUE SPRUCE COLOR, AS BASIS OF DESIGN, OR SLATS OF EQUAL PERFORMANCE AND QUALITY. SLATS SHALL MATCH EXISTING. CONTRACTOR TO SUBMIT SAMPLE TO CONTRACTING OFFICER AND RESIDENT ENGINEER FOR APPROVAL PRIOR TO INSTALLATION.
 - 11 PROVIDE NEW PANELS IN AREA INDICATED, MATCH EXISTING. ANCHOR TO EXISTING CONCRETE STRUCTURE. APPROXIMATELY (38) PANELS. SEE DETAILS ON SHEET AE105 FOR ADDITIONAL INFORMATION.
 - 12 PROVIDE NEW HEAVY DUTY 36"WIDE x 28"HIGH DRAINABLE WALL LOUVER IN EXISTING OPENING. CONTRACTOR SHALL VERIFY OPENING PRIOR TO PLACING ORDER.

3 HANDRAIL DETAIL - NEW WORK
AE104 SCALE: NOT TO SCALE



4 SIGNAGE DETAIL
AE104 NOT TO SCALE



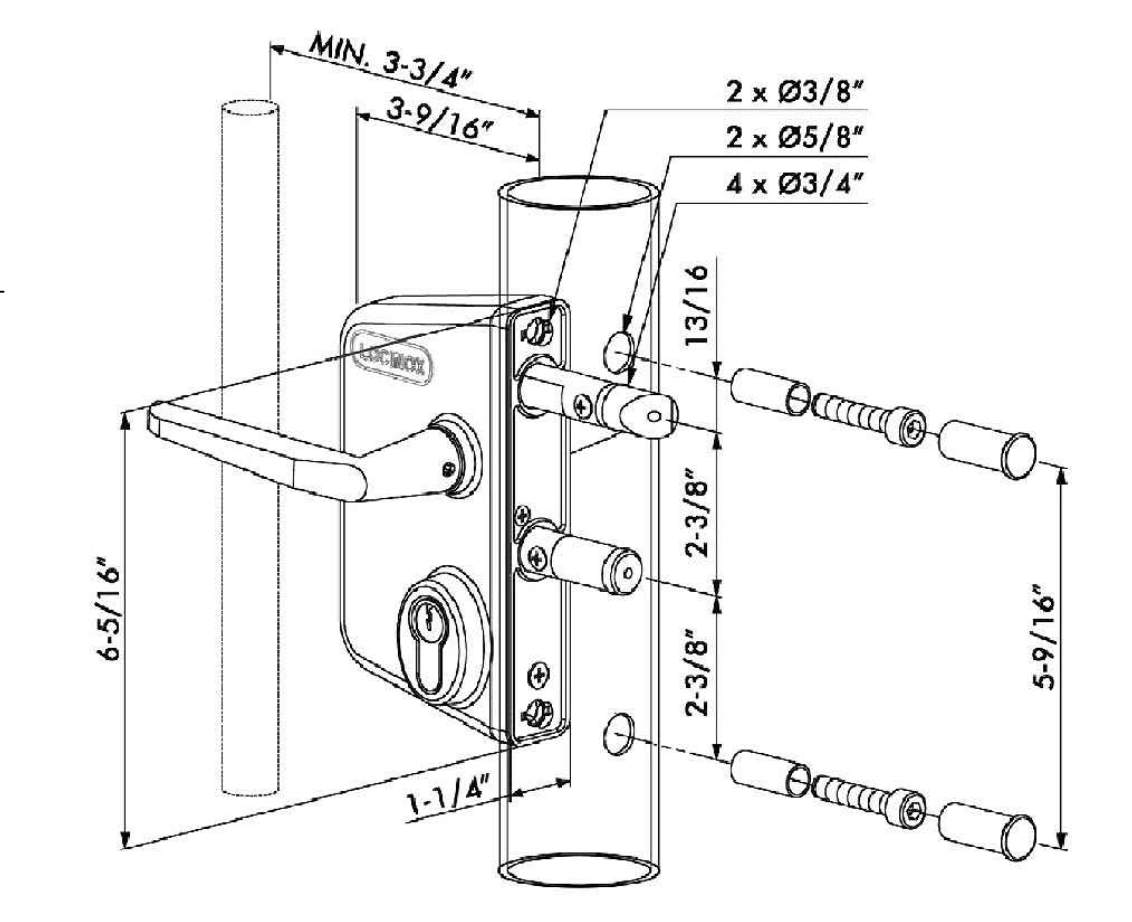
6 CHAIN LINK FENCE DETAILS
AE104 SCALE: 3/4" = 1'-0"

- ### NOTES:
- CONTRACTOR SHALL PROVIDE LOCINOX® GATE LOCK LAKO-U8 WITH SECURITY KEEPER AS BASIS OF DESIGN, OR PRODUCT OF EQUAL PERFORMANCE. LOCK CYLINDER SHALL BE STANLEY/BEST SFIC 3C CYLINDER CORE KEYED PER DIRECTION OF COR/RE.
 - SEE FLOOR PLAN AND NEW WORK NOTE #8 ON SHEET AE101 FOR ADDITIONAL INFORMATION.
 - INTERMEDIATE POST SHALL BE SPACED ACCORDING TO MANUFACTURER'S REQUIREMENTS.

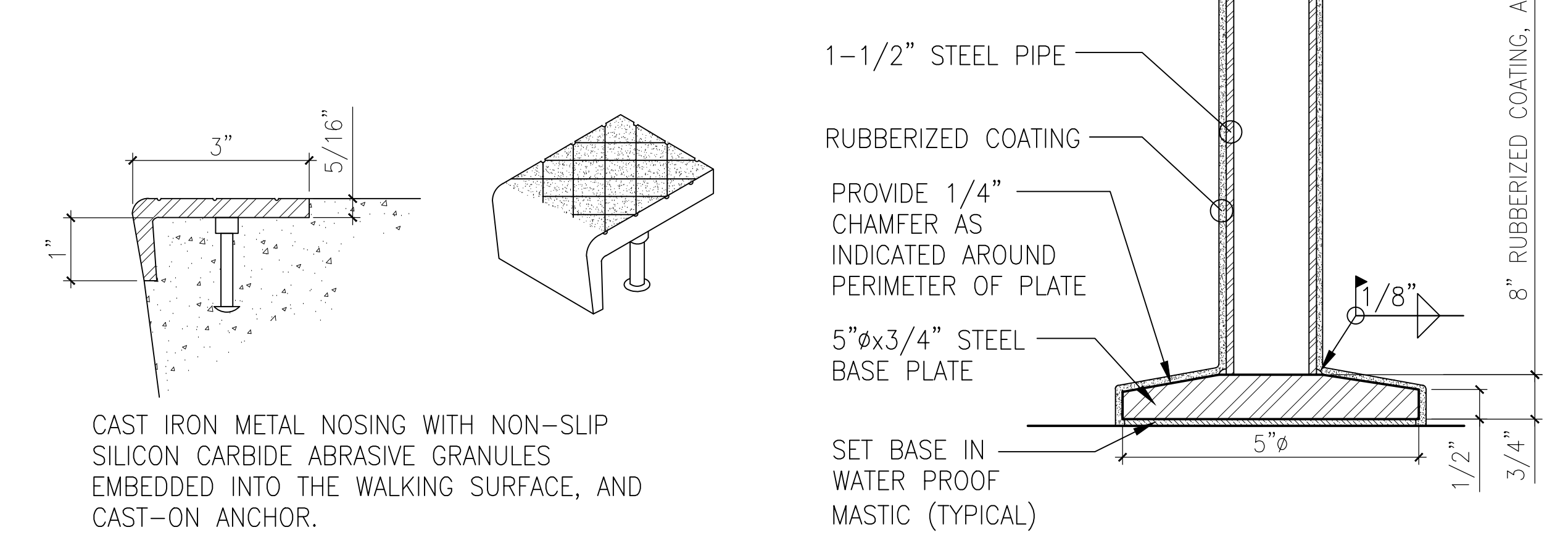
GENERAL NOTE:

(APPLIES TO ALL)

1. WHERE ITEM IS INDICATED AS "BASIS OF DESIGN" IT IS NOT INTENDED TO LIMIT SELECTION. PROVIDE INDICATED ITEM OR ITEM OF EQUAL QUALITY AND PERFORMANCE.

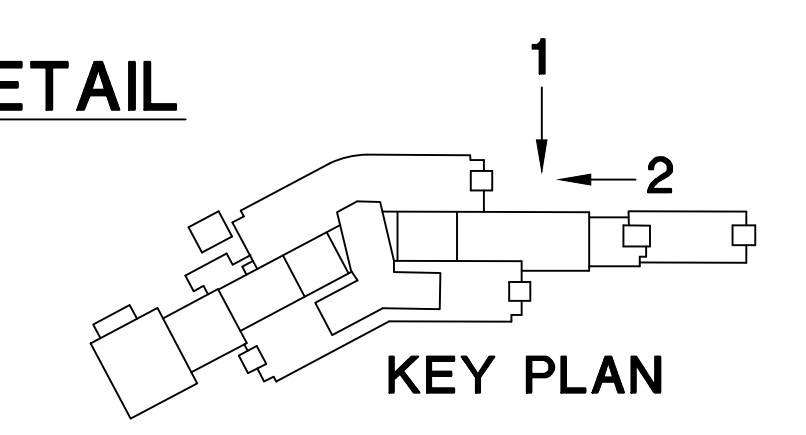


6A CHAIN LINK LOCK DETAIL
AE104 SCALE: NOT TO SCALE



5 STAIR NOSING DETAIL
AE104 NOT TO SCALE

7 HANDRAIL BASE PLATE
AE104 NOT TO SCALE



KEY PLAN FINAL SUBMISSION

CONSULTANTS:			ARCHITECT/ENGINEERS:		Drawing Title LOADING DOCK EXTERIOR ELEVATIONS AND DETAILS - NEW WORK	Project Title CORRECT SAFETY DEFICIENCIES AT LOADING DOCK JAMES PETERS MEDICAL CENTER, BRONX, NY	Project Number 526-13-108	Office of Construction and Facilities Management
			 ARCHITECTS ENGINEERS CONSTRUCTORS P.O. BOX 2060, BEAUFORT, S.C. 29901-2060 843-522-2094		Approved Project Director	Location Date: 11/07/2014 Checked: RLD Drawn: JMA	Building Number N/A	
Revisions:								