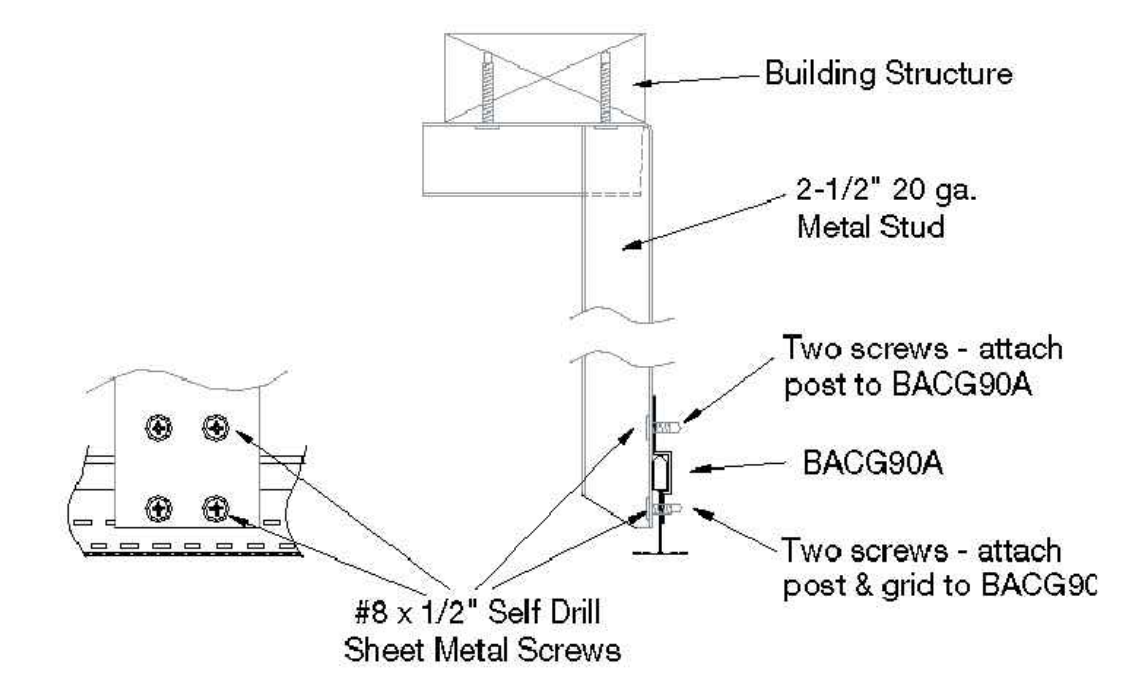
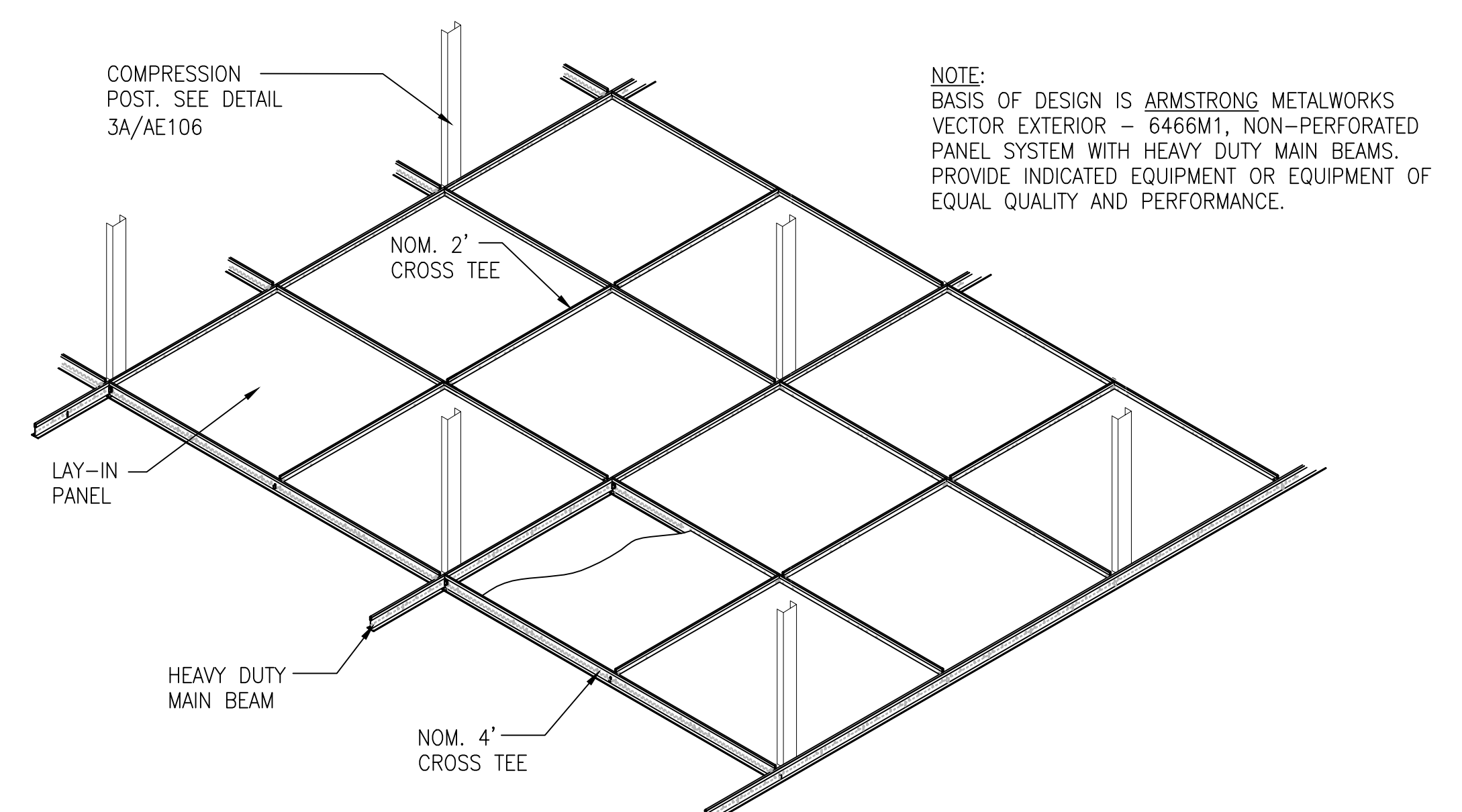


K:\2013\2013030_00>Loading Dock\Correct Safety Deficiencies at Loading Dock\DWG\2013.030.00_AE106.dwg, 12/11/2014 9:16:37 AM

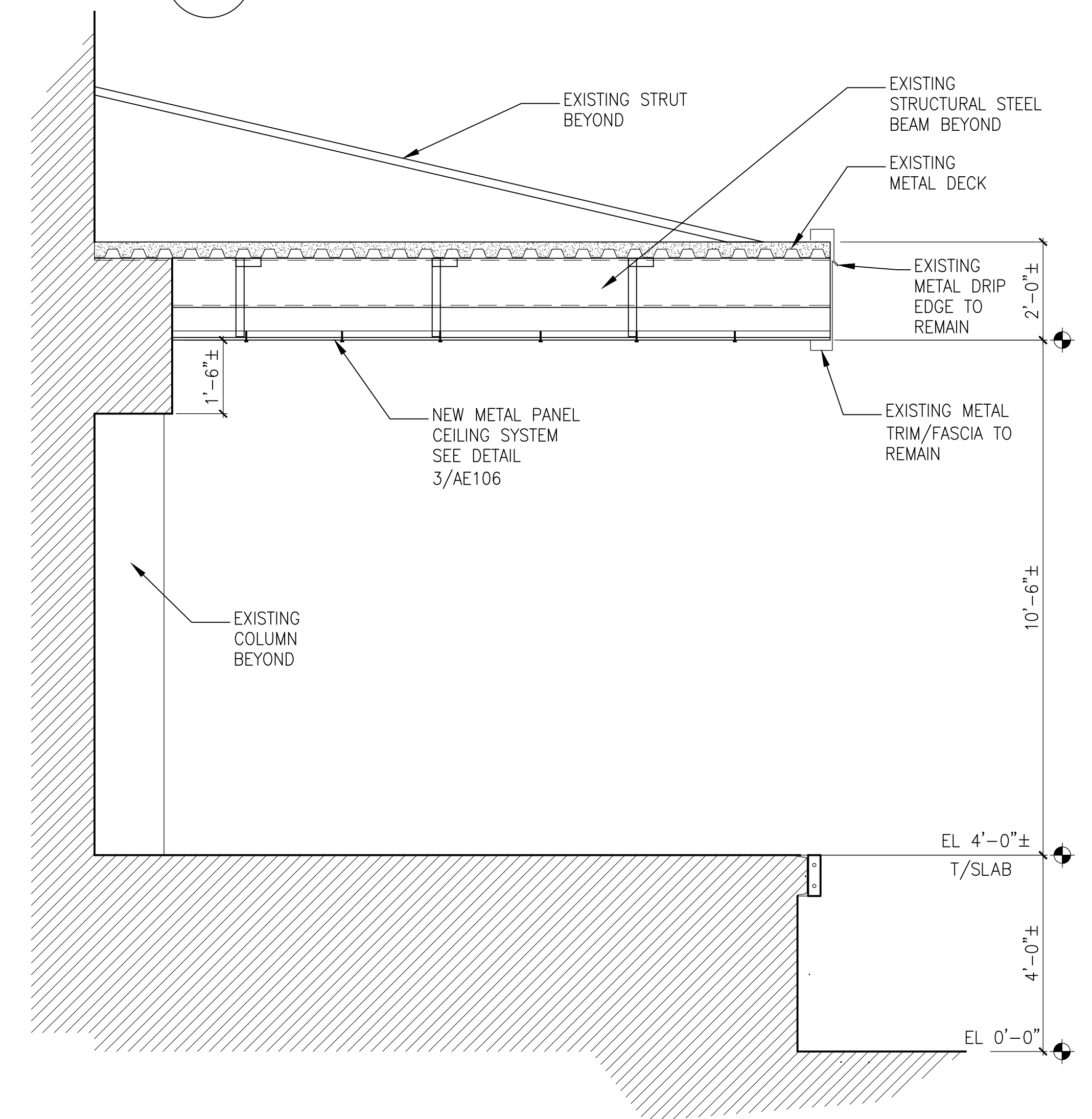
ONE EIGHTH INCH = ONE FOOT
ONE QUARTER INCH = ONE FOOT
ONE HALF INCH = ONE FOOT
THREE EIGHTHS INCH = ONE FOOT
ONE INCH = ONE FOOT
ONE AND ONE HALF INCH = ONE FOOT
TWO INCHES = ONE FOOT
THREE INCHES = ONE FOOT



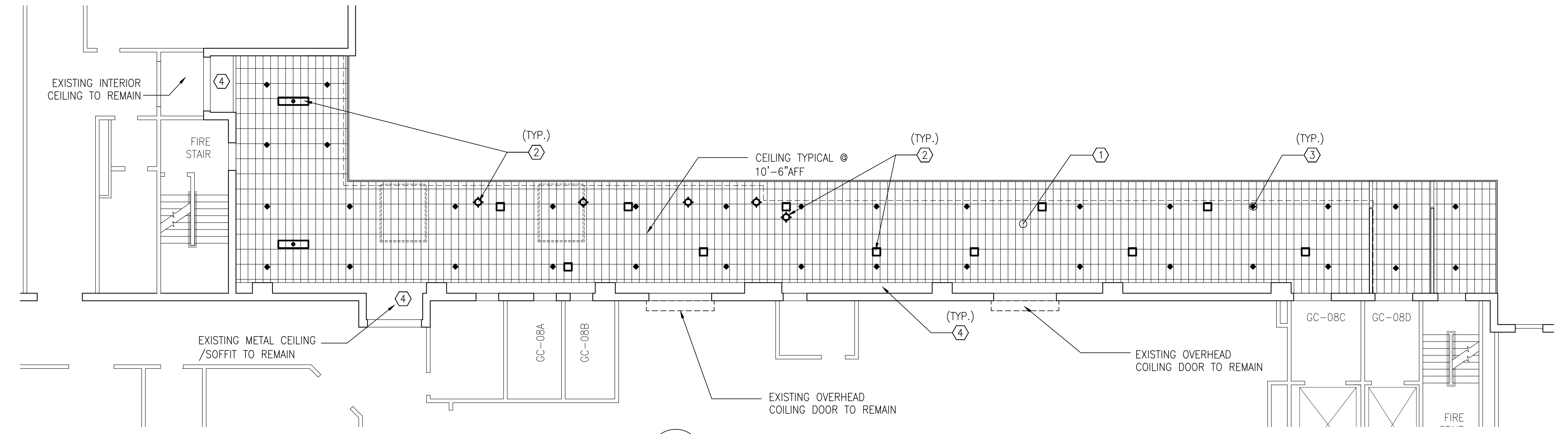
3A COMPRESSION POST DETAIL
AE106 NOT TO SCALE



3 PANEL CEILING SUSPENSION - NEW WORK
AE106 NOT TO SCALE



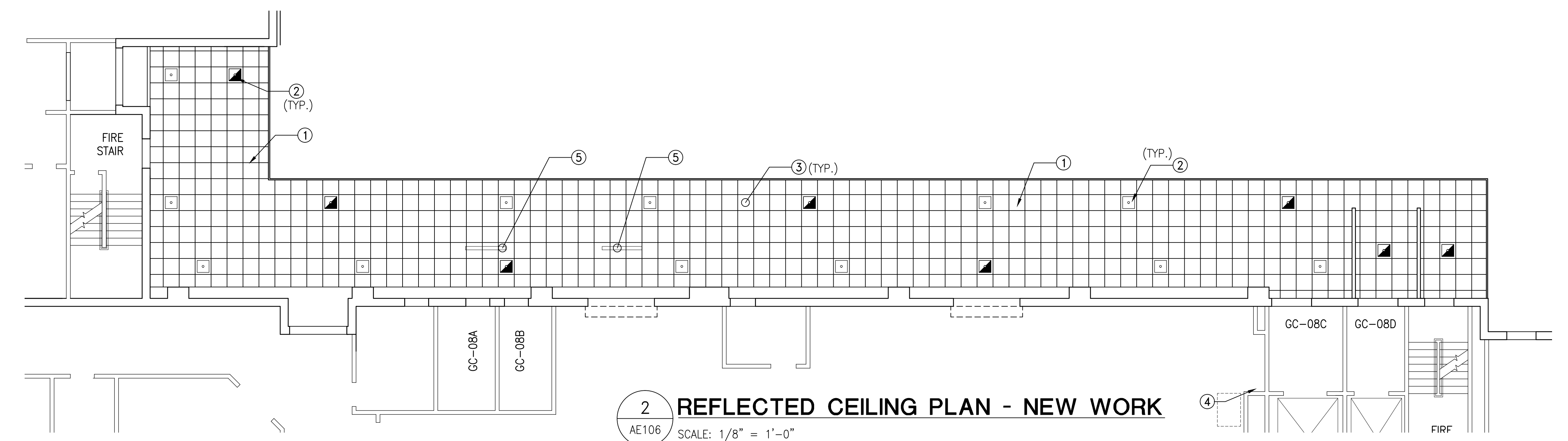
4 CANOPY SECTION - NEW WORK
AE106 SCALE: 1/2" = 1'-0"



1 REFLECTED CEILING PLAN - EXISTING & DEMOLITION
AE106 SCALE: 1/8" = 1'-0"

- DEMOLITION NOTE SCHEDULE**
- 1 DEMOLISH EXISTING 1'x2' CEILING PANELS AND SUSPENSION SYSTEM COMPLETE.
 - 2 DEMOLISH EXISTING LIGHT FIXTURES. SEE ELECTRICAL DRAWINGS FOR ADDITIONAL INFORMATION.
 - 3 DEMOLISH EXISTING SPRINKLER HEADS. SEE FIRE PROTECTION DRAWINGS FOR ADDITIONAL INFORMATION.
 - 4 EXISTING METAL PANEL CEILING/SOFFIT TO REMAIN @ 9'-0" AFF.

GENERAL NOTE:
APPROPRIATE INFECTION CONTROL MEASURES AS SPECIFIED IN SECTION 01 00 00 GENERAL REQUIREMENTS, PARAGRAPH TITLED "HISTOPLASMOSIS CONTROL" SHALL BE TAKEN DURING THE DEMOLITION AND REMOVAL OF CANOPY CEILING PANELS TO ACCOUNT FOR DISPOSAL OF BIRD EXCREMENT.

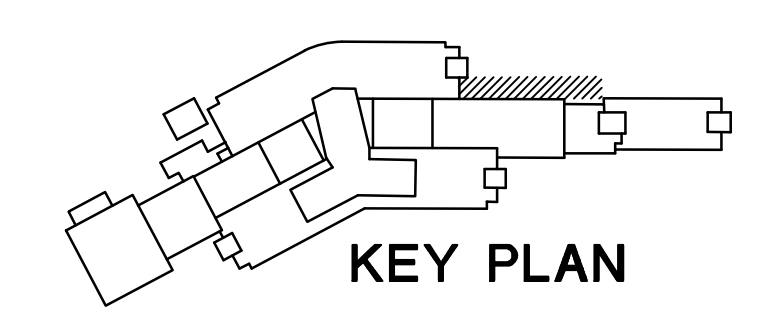


2 REFLECTED CEILING PLAN - NEW WORK
AE106 SCALE: 1/8" = 1'-0"

- NEW WORK NOTE SCHEDULE**
- 1 PROVIDE NEW 24x24 METAL PANEL CEILING SYSTEM.
 - 2 PROVIDE NEW EXTERIOR GRADE LED LIGHT FIXTURE
 - 3 PROVIDE NEW QUICK RESPONSE SPRINKLER HEAD AND ESCUTCHEON PLATE. SEE FIRE PROTECTION DRAWINGS FOR ADDITIONAL INFORMATION. SEE SHEET FP102 FOR ADDITIONAL INFORMATION.
 - 4 EXISTING FIRE SUPPRESSION RISER LOCATION.
 - 5 PROVIDE NEW INFRARED HEATER. SEE SHEET MH102 FOR ADDITIONAL INFORMATION.

LEGEND

- 12x24 CEILING GRID - EXISTING
- 24x24 CEILING GRID - NEW WORK
- 2x2 LED FIXTURE
- SUSPENDED SPOT LIGHT/PENDANT
- SPRINKLER HEAD
- EL (ELEVATION)



KEY PLAN FINAL SUBMISSION

Revisions: Date	CONSULTANTS:		ARCHITECT/ENGINEERS:	Drawing Title LOADING DOCK REFLECTED CEILING PLANS EXISTING & NEW WORK	Project Title CORRECT SAFETY DEFICIENCIES AT LOADING DOCK JAMES PETERS MEDICAL CENTER, BRONX, NY	Project Number 526-13-108	Office of Construction and Facilities Management
				 ARCHITECTS ENGINEERS CONSTRUCTORS P.O. BOX 2060, BEAUFORT, S.C. 29901-2060 843-522-2094	Approved Project Director	Location Date 11/07/2014	