

K:\2013\2013030_00>Loading Dock\Correct Society Deficiencies at Loading Dock\DWG\2013030_00_0002.dwg, 12/1/2014 9:15:44 AM

A

B

C

D

E

F

A

B

C

D

E

F

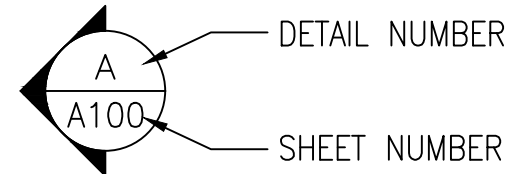
BUILDING CODES AND STANDARDS

1. VA DESIGN MANUAL (PG-18-0)
2. VA DESIGN, QUALITY, AND STANDARD ALERTS
3. VA DESIGN GUIDES (PG-18-12)
4. VA DESIGN AND CONSTRUCTION PROCEDURES (PG-18-3)
5. PHYSICAL SECURITY DESIGN MANUAL FOR VA FACILITIES
6. VA FIRE PROTECTION DESIGN MANUAL
7. VA BARRIER FREE DESIGN GUIDE (PG-18-3)
8. VA SIGNAGE DESIGN GUIDE
9. VA PARKING DESIGN GUIDE
10. NFPA 101: LIFE SAFETY CODE
11. NFPA 13: STANDARD FOR THE INSTALLATION OF SPRINKLER SYSTEMS
12. NFPA 70: NATIONAL ELECTRICAL CODE
13. ASHRAE 62.1: VENTILATION FOR ACCEPTABLE INDOOR AIR QUALITY
14. ASHRAE 90.1: ENERGY STANDARD FOR BUILDINGS EXCEPT LOW RISE RESIDENTIAL BUILDINGS
15. VA NATIONAL CAD STANDARD APPLICATION GUIDE
16. NFPA NATIONAL FIRE CODES (EXCEPT NFPA 5000 & 900)
17. VA SEISMIC DESIGN REQUIREMENTS, H-18-8
18. OSHA STANDARDS
19. BUILDING CODE REQUIREMENTS FOR REINFORCED CONCRETE, AMERICAN CONCRETE INSTITUTE AND COMMENTARY (ACI 318)
20. EPA 2005
21. VA MASTER SPECIFICATIONS
22. NEC NATIONAL ELECTRICAL CODE 2011.

SYMBOLS LEGEND

NOT ALL SYMBOLS ARE USED IN THIS DRAWING SET

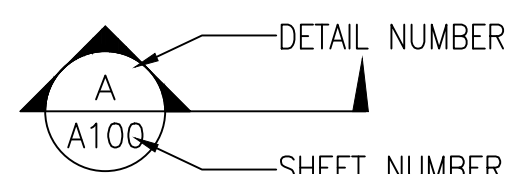
EXTERIOR ELEVATION



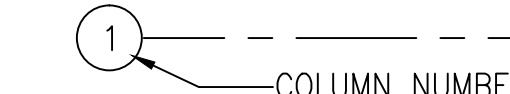
DOOR DESIGNATION



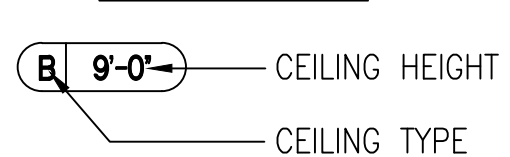
SECTION INDICATOR



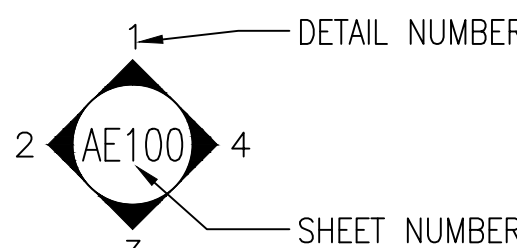
COLUMN INDICATOR



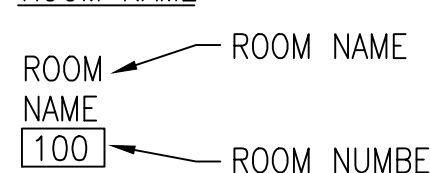
CEILING INDICATOR



INTERIOR ELEVATIONS



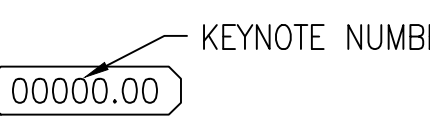
ROOM NAME



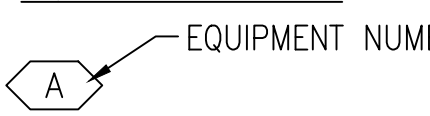
WINDOW INDICATOR



KEYNOTE INDICATOR



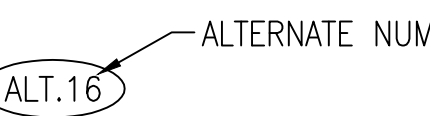
EQUIPMENT INDICATOR



WALL TYPE INDICATOR



ALTERNATE INDICATOR



3 PHOTO DETAIL

1 NEW WORK NOTE

2 DEMOLITION NOTE

DEMOLITION NOTES

DEFINITIONS:

CUTTING: REMOVAL OF IN-PLACE CONSTRUCTION NECESSARY TO PERMIT INSTALLATION OR PERFORMANCE OF OTHER WORK.

PATCHING: FITTING AND REPAIR WORK REQUIRED TO RESTORE SURFACES TO ORIGINAL CONDITIONS AFTER INSTALLATION OF OTHER WORK.

REMOVE: DETACH ITEMS FROM EXISTING CONSTRUCTION AND LEGALLY DISPOSE OF THEM OFF-SITE, UNLESS INDICATED TO BE SALVAGED OR REMOVED AND REINSTALLED.

SALVAGE: DETACH ITEMS FROM EXISTING CONSTRUCTION AND DELIVER THEM TO OWNER READY FOR REUSE.

REMOVE AND REINSTALL: DETACH ITEMS FROM EXISTING CONSTRUCTION, PREPARE THEM FOR REUSE, AND REINSTALL THEM WHERE INDICATED.

EXISTING TO REMAIN: EXISTING ITEMS OF CONSTRUCTION THAT ARE NOT TO BE REMOVED AND THAT ARE NOT OTHERWISE INDICATED TO BE REMOVED, REMOVED AND SALVAGED, OR REMOVED AND REINSTALLED.

GENERAL NOTES:

1. DEPICTION OF EXISTING CONDITIONS BASED ON ORIGINAL CONSTRUCTION DOCUMENTS AND LIMITED FIELD OBSERVATIONS. EXISTING ELEMENTS AND CONDITIONS CONCEALED BY IN-PLACE EQUIPMENT AND FINISHES WERE NOT OBSERVED OR INVESTIGATED. ONCE CUTTING AND SELECTIVE DEMOLITION WORK IS COMPLETE, REPORT ANY CONFLICTS TO COR/RE.

2. VAMC EQUIPMENT SUPPLIER TO REMOVE EXISTING UNMOUNTED AND MOUNTED EQUIPMENT PRIOR TO CONSTRUCTION. ONCE OWNER & EQUIPMENT SUPPLIER HAS REMOVED EQUIPMENT, PHOTOGRAPHICALLY DOCUMENT ENTIRE AREA OF NEW WORK. TAKE NOTE OF ANY DAMAGED SURFACES OR ELEMENTS. PREPARE WRITTEN AND PHOTOGRAPHIC REPORT OF SURVEY AND SUBMIT TO OWNER AND DESIGNER.

3. PROTECT ALL EXISTING FINISHES AND ELEMENTS TO REMAIN. REPAIR OR REPLACE DAMAGED SURFACES TO MATCH ADJACENT FINISHES.

STANDARD ABBREVIATIONS

A

A.C. AIR CONDITIONED
A.H.U. AIR HANDLING UNIT
ALT. ALTERNATIVE
ALUM. ALUMINUM
A.O. ACCESS OPENING
APPROX. APPROXIMATELY
ARCH. ARCHITECTURAL
ACMU ARCHITECTURAL CONC. MASONRY UNIT
ACT ACOUSTIC CEILING TILE
AV AUDIO VISUAL

B

BD. BOARD
BLDG. BUILDING
BM. BEAM
BOT. BOTTOM
BRG. BEARING
BOC BOTTOM OF CURB (ELEVATION)

C

CABT. CABINET
CAP. CAPACITY
CCTV CLOSED CIRCUIT TV
C.A. CEILING DIFFUSER
CEM. CEMENT

C

CIRC. CIRCULATING
C.J. CONTROL JOINT
CLG. CEILING
CMU CONCRETE MASONRY UNIT
COL. CLEAN OUT
COL. COLUMN
CONC. CONCRETE
CONN. CONNECTION
CONST. CONSTRUCTION
CONT. CONTINUOUS
COR CONTRACTING OFFICER'S REPRESENTATIVE
C.T. CERAMIC TILE
C.T.B. CERAMIC TILE BASE
C.F.C.I. CONTRACTOR FURNISH CONTRACTOR INSTALLED

D

DET. DETAIL
DEST. DESTINATION
DIA. DIAMETER
DIM. DIFFUSER
HR. DIMENSION
DN. DOWN
DR. DRAIN
DS. DOWN SPOUT
DWGs DRAWING(S)

E

EA. EACH
E.F. EXHAUST FAN
ELEV. ELEVATION
ELEC. ELECTRICAL
EQUIP. EQUIPMENT
EWC ELECTRIC WATER COOLER
EXH. EXHAUST
EXP. JT. EXPANSION JOINT
EL. EXTERIOR
EXIST. EXISTING

F

F.A. FIRE ALARM
F.D. FLOOR DRAIN
F.E. FIRE EXTINGUISHER
F.E.C. FIRE EXTINGUISHER CABINET
FIN. FINISH
FL. FLOOR
F.O. FACE OF
FR. FRAME
FT. FOOT, FEET
FTG. FOOTING

G

GA. GAGE
GAL. GALLON
GALV. GALVANIZED
GFGI GOVERNMENT FURNISHED/GOVERNMENT INSTALLED
GL. GLASS
GND. GROUND
GOV'T GOVERNMENT
G.P.H. GALLONS/HOUR
G.P.M. GALLONS/MINUTE
GR. GRILLE
G.B. GYPSUM BOARD

H

HB HOSE BIBB
H.C. HOLLOW CORE
HEWC HANDICAPPED ELECTRICAL WATER COOLER
HT. HEIGHT
H.M. HOLLOW METAL
HM/INSUL HOLLOW METAL INSULATED DOOR
HR. HOUR
HTG. HEATING
HTR. HEATER
HW HOT WATER

I

IN. INCHES
INSUL. INSULATION
INT. INTERIOR

J

J.B. JUNCTION BOX
JCT. JUNCTION
JT. JOINT

L

LB., # POUND
L.P. LIGHTING PANEL
LTG. LIGHTING

M

MAINT. MAINTENANCE
MAX. MAXIMUM
MECH. MECHANICAL
MTL. METAL
MIN. MINIMUM
MISC. MISCELLANEOUS
M.O. MASONRY OPENING
M.T. METAL THRESHOLD
MTD. MOUNTED
MTG. MOUNTING

N

N.A. NOT APPLICABLE
N.I.C. NOT IN CONTACT
NO. NUMBER
NOM. NOMINAL
NTS. NOT TO SCALE

O

O.C. ON CENTER
O.D. OUTSIDE DIAMETER
O.F.I. OWNER FURNISH CONTRACTOR INSTALL
O.F.O.I. OWNER FURNISH OWNER INSTALL
OH. OVERHEAD
OPNG. OPENING

P

PART. PARTITION
PEMB PRE-ENGINEERED MANUFACTURED BUILDING
PL. PLATE
PLBG. PLUMBING
PLYWOOD PLYWOOD
PNL. PANEL
PRES. PRESSURE
PSF POUNDS/SQUARE FOOT
PSI POUNDS/SQUARE INCH
PT. PRESSURE TREATED

Q

QTR. QUARTER

R

R.A. RETURN AIR
RAD. RADIUS
RCP. REFLECTED CEILING PLAN
RD. ROUND
REC'D RECESSED
RECP. RECEPTACLE
REINF. REINFORCING
REQ. REQUIRED
RM. ROOM

S

SAB SOUND ATTENUATION BLANKET
S.A. SUPPLY AIR
SCH. SCHEDULE
S.D. SOAP DISPENSER
SECT. SECTION
SHT. SHEET
S.J. SLIP JOINT
SPEC. SPECIFICATIONS
SQ. FT. SQUARE FEET
STL. STEEL
STOR. STORAGE
SS. SANITARY SEWER

STRUCT. STRUCTURAL
SUSP. SUSPENDED

T

T. THERMOSTAT
U. TELEPHONE
THD. THRESHOLD
TOIL. TOILET
TYP. TYPICAL
TOC TOP OF CURB (ELEVATION)

U

UNK. UNKNOWN
UNO UNLESS NOTED OTHERWISE
UNK DEST. UNKNOWN DESTINATION

V

V.T. VINYL TILE
VENT. VENTILATION
VERT. VERTICAL
VCP. VITRIFIED CLAY PIPE
VIF. VERIFY IN FIELD

W

W/ WITH
WD. WOOD

FINAL SUBMISSION

CONSULTANTS:

ARCHITECT/ENGINEERS:



BES
INCORPORATED

ARCHITECTS
ENGINEERS
CONSTRUCTORS

P.O. BOX 2060, BEAUFORT, S.C. 29901-2060 843-522-2094

Drawing Title

LEGENDS, SYMBOLS
AND ABBREVIATIONS

Approved Project Director

Project Title

CORRECT SAFETY DEFICIENCIES
AT LOADING DOCK
JAMES PETERS MEDICAL CENTER, BRONX, NY

Location

Date 11/07/2014

Checked B. COFFMAN

Drawn JMA

Project Number

526-13-108

Building Number

N/A

Drawing Number

GI002

Dwg 2 of 38

Office of
Construction
and Facilities
Management

