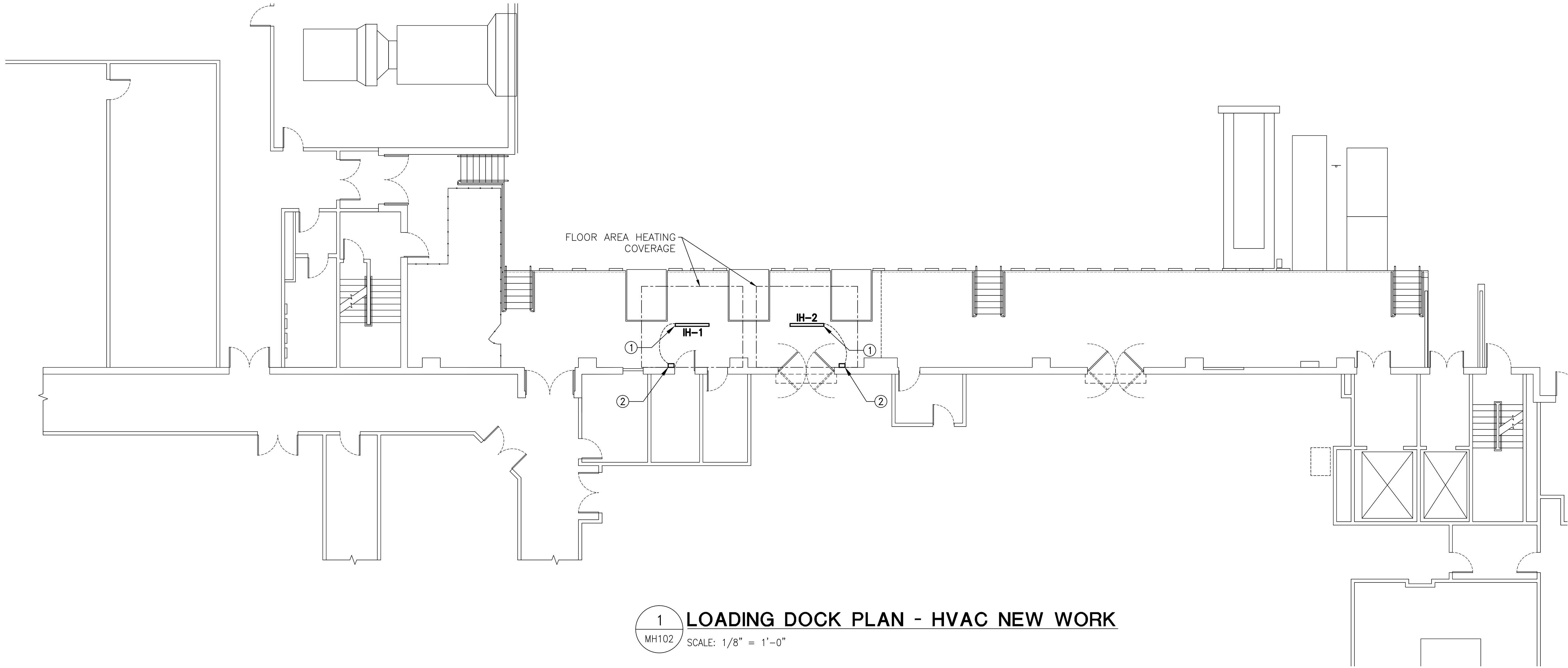
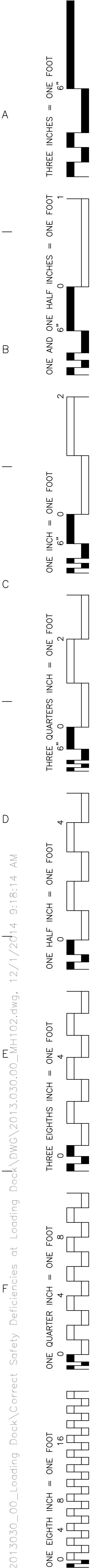
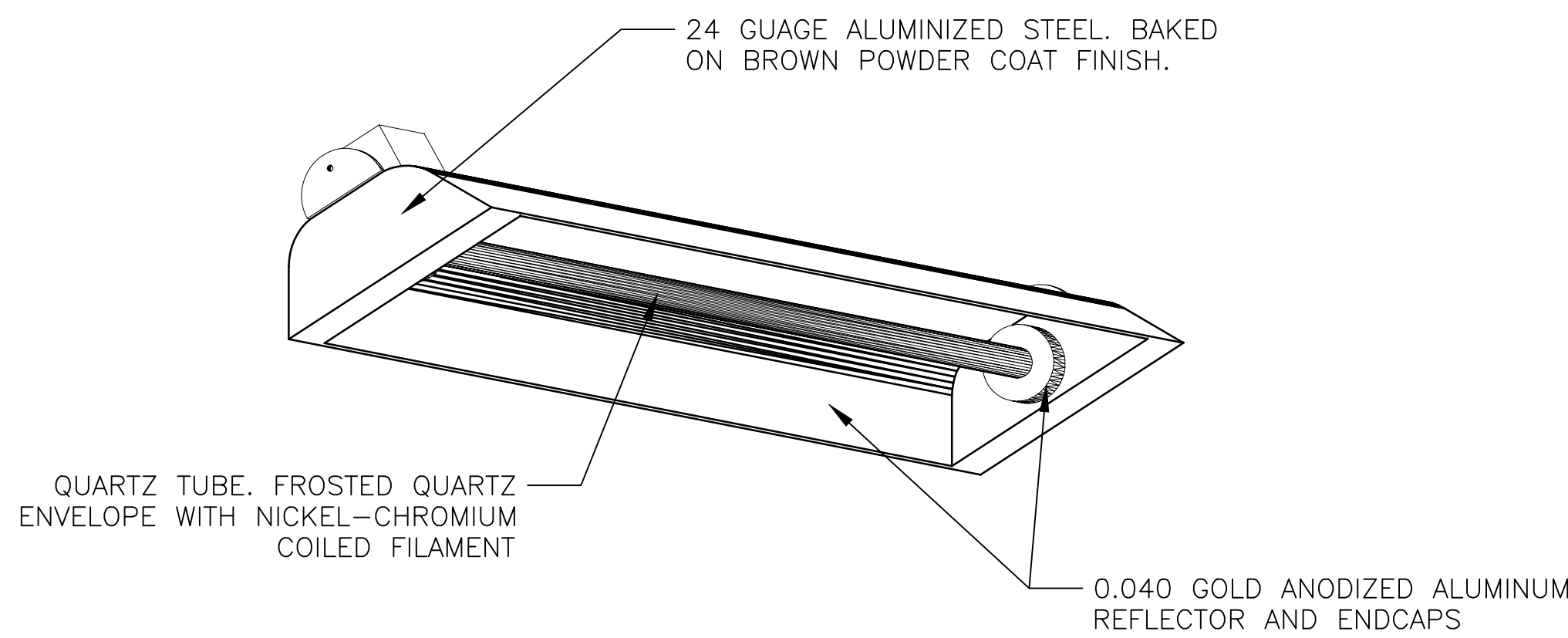


K:\2013\2013030_00>Loading Dock\Correct Safety Deficiencies at Loading Dock\DWG\2013.030.00_MH102.dwg, 12/11/2014 9:16:14 AM



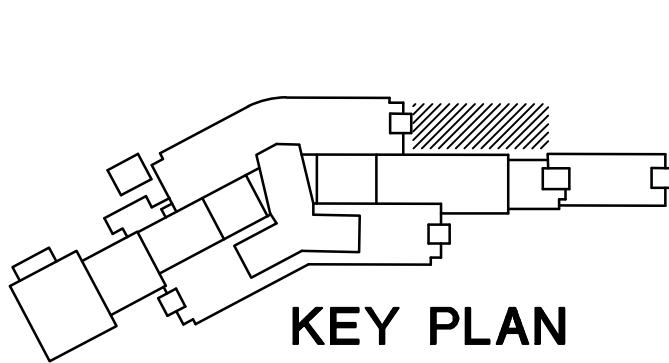
1 **LOADING DOCK PLAN - HVAC NEW WORK**
MH102 SCALE: 1/8" = 1'-0"

NEW WORK NOTE SCHEDULE	
①	PROVIDE NEW ELECTRIC, QUARTZ, INFRARED RADIANT HEATER AS SCHEDULED ON THIS SHEET INCLUDING CONTROLS, HANGERS AND SUPPORTS.
②	MOUNT TIMER AND CONTROL FOR HEATER ON WALL APPROXIMATELY WHERE SHOWN.



QUARTZ INFRARED RADIANT HEATER SCHEDULE							
MARK	DESIGN BASIS MFR & MODEL #	HEATER COVERAGE (SQFT)	WATTS	WATTS PER SQFT	MOUNTING HEIGHT	ELECTICAL VOLTS/PH/HZ	REMARKS
IH-1	MARKEL OCH-57	180	3,000	16.7	10' AFF	277/1/60	1,2,3
IH-2	MARKEL OCH-57	180	3,000	16.7	10' AFF	277/1/60	1,2,3

- NOTES:
1. BASIS OF DESIGN IS MARKEL BUT IS NOT INTENDED TO LIMIT SELECTION. PROVIDE INDICATED EQUIPMENT OR EQUIPMENT OF EQUAL PERFORMANCE, CAPACITY, AND QUALITY.
 2. PROVIDE WITH TWO-HOUR TIMER WITH INTENSITY CONTROLLER. MOUNT CONTROLLER ON WALL.
 3. MOUNT IN ACCORDANCE WITH MANUFACTURERS' WRITTEN RECOMMENDATIONS AND CLEARANCES



KEY PLAN

FINAL SUBMISSION

CONSULTANTS:			ARCHITECT/ENGINEERS:		Drawing Title LOADING DOCK HVAC NEW WORK		Project Title CORRECT SAFETY DEFICIENCIES AT LOADING DOCK JAMES PETERS MEDICAL CENTER, BRONX, NY		Project Number 526-13-108	Office of Construction and Facilities Management 	
			 ARCHITECTS ENGINEERS CONSTRUCTORS P.O. BOX 2060, BEAUFORT, S.C. 29901-2060 843-522-2094		Approved Project Director		Location		Building Number N/A		
Revisions:		Date				Date 11/07/2014		Checked RLD	Drawn TJF	Drawing Number MH102	
										Dwg. 31 of 38	