

NOTES

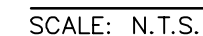
- NOTES:

CHIA
6 Campus Drive • Parsippany, NJ 07054-4406
Main: (973) 538-2120 • www.chacompanies.com



BES
INCORPORATED

P.O. BOX 2060, BEAUFORT, S.C. 29901-2060 843-522-2094



1. ROOF RAFTERS NOT SHOWN FOR CLARITY (SEE DRAWING S202).

- SCALE: N.T.S.

1. EXISTING CONCRETE SECTIONAL DETAIL IS ASSUMED, THEREFORE NOTIFY THE ENGINEER IF DIFFERENT.



- SCALE: N.T.S.



NOTES:

- FINAL SUBMISSION

Office of
Construction
and Facilities
Management

