



REVISIONS	
No.	DATE
XX	XX
XX	XX
XX	XX
XX	XX
XX	XX
XX	XX
XX	XX
XX	XX
XX	XX



VETERAN'S ADMINISTRATION
MEDICAL CENTER
EXTEND EMERGENCY POWER
2360 EAST PERSHING AVENUE
CHEYENNE, WYOMING

TITLE
15KV ONE
LINE
DIAGRAM

DATE	OCTOBER 2, 2009
SCALE	NO SCALE
APPROVED BY:	CMC
CHECKED BY:	KDM
DESIGNED BY:	KDM
DRAWN BY:	BE

FAULT CURRENT	
KEY	SHORT CIRCUIT AMPERES*
X ₁	I _{sc} = 485.38
X ₂	I _{sc} = 485.34
X ₃	I _{sc} = 485.10

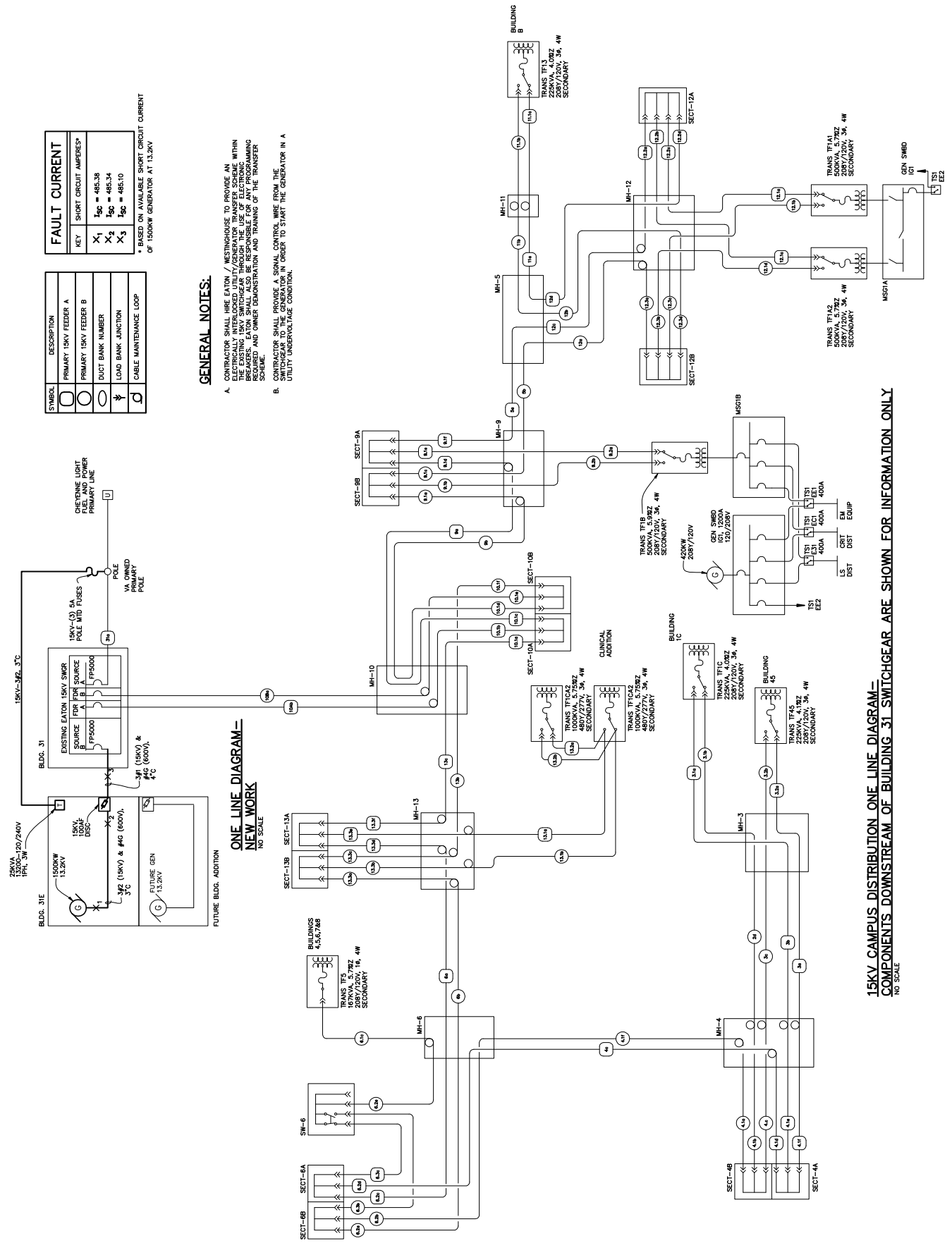
* BASED ON AVAILABLE SHORT CIRCUIT CURRENT OF 1500KW GENERATOR AT 13.2KV

SYMBOL	DESCRIPTION
○	PRIMARY 15KV FEEDER A
○	PRIMARY 15KV FEEDER B
○	DUCT BANK NUMBER
○	LOAD BANK JUNCTION
○	CABLE MAINTENANCE LOOP

GENERAL NOTES:

- CONTRACTOR SHALL HIRE EATON / WESTINGHOUSE TO PROVIDE AN ELECTRICALLY INTERLOCKED UTILITY/GENERATOR TRANSFER SCHEME WITHIN THE MEDICAL CENTER BUILDING. THE CONTRACTOR SHALL BE RESPONSIBLE FOR ANY PROGRAMMING REQUIRED AND OWNER DEMONSTRATION AND TRAINING OF THE TRANSFER SCHEME.
- CONTRACTOR SHALL PROVIDE A SIGNAL CONTROLS WIRE FROM THE SWITCHGEAR TO THE GENERATOR IN ORDER TO START THE GENERATOR IN A UNDETVOLTAGE CONDITION.

ONE LINE DIAGRAM—
NEW WORK
NO SCALE



15KV CAMPUS DISTRIBUTION ONE LINE DIAGRAM—
COMPONENTS DOWNSTREAM OF BUILDING 31 SWITCHGEAR ARE SHOWN FOR INFORMATION ONLY
NO SCALE