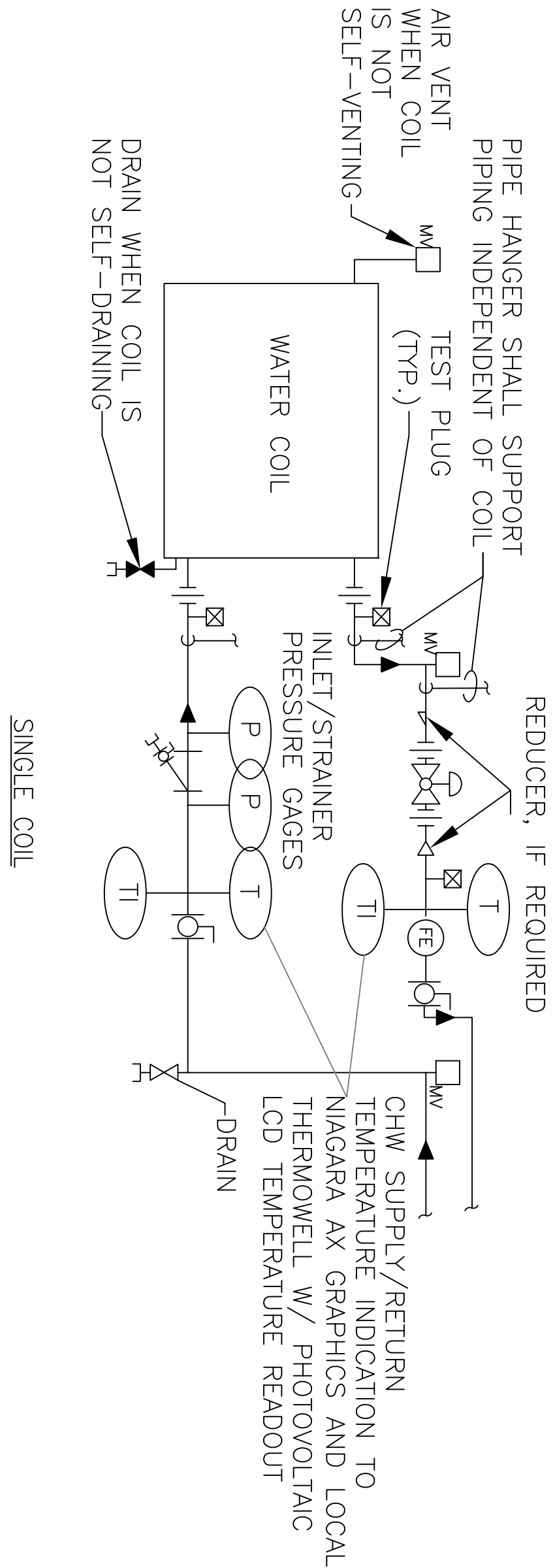
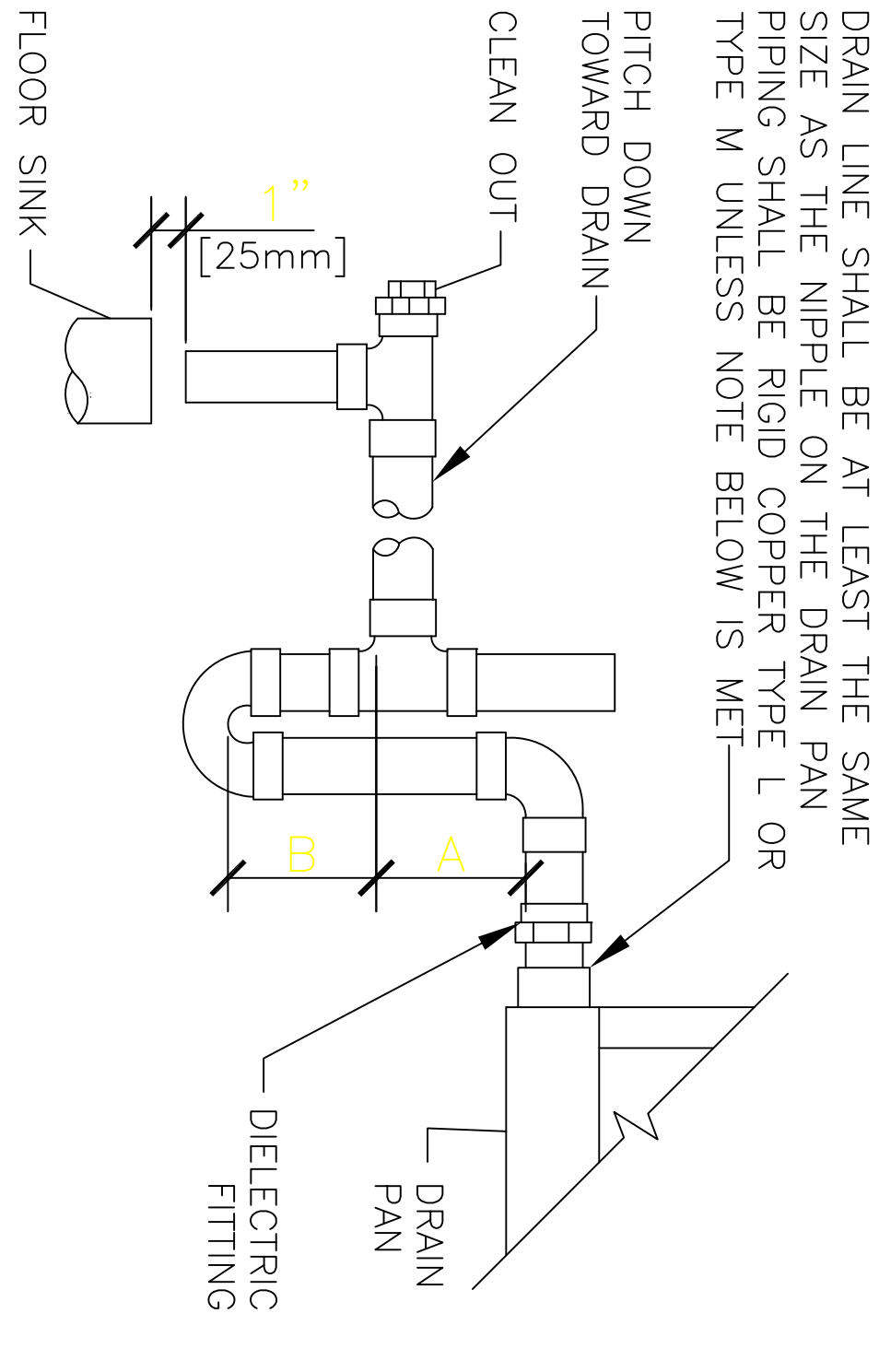


P – Pressure gage
T – DDC Thermometer
TI – Local Thermometer
WV – Manual Air Vent
FE – Flow Element/Circuit Setter



NOTE:

1. WHEN COIL IS INCLUDED IN CASING MOUNTED ON VIBRATION ISOLATORS THE FIRST 2 HANGERS FOR EACH PIPE SHALL BE SPRING & NEOPRENE TYPE. TYPE "H" FOR 4" [100mm]ø PIPE & SMALLER. TYPE "H-P" FOR 5" [125mm]ø PIPE & LARGER.
2. PIPING SHALL BE INSTALLED IN SUCH MANNER THAT IT WILL NOT BLOCK THE SWING OR USE OF ACCESS, DOORS OR PANELS; NEITHER SHALL IT BLOCK THE SERVING OF FILTERS, VALES, OR EQUIPMENT.
3. THE FLOW ELEMENT MAY BE INSTALLED IN THE SUPPLY PIPING IF THE REQUIRED MINIMUM UPSTREAM AND DOWNSTREAM DIMENSIONS CANNOT BE OBTAINED IN THE RETURN PIPING.



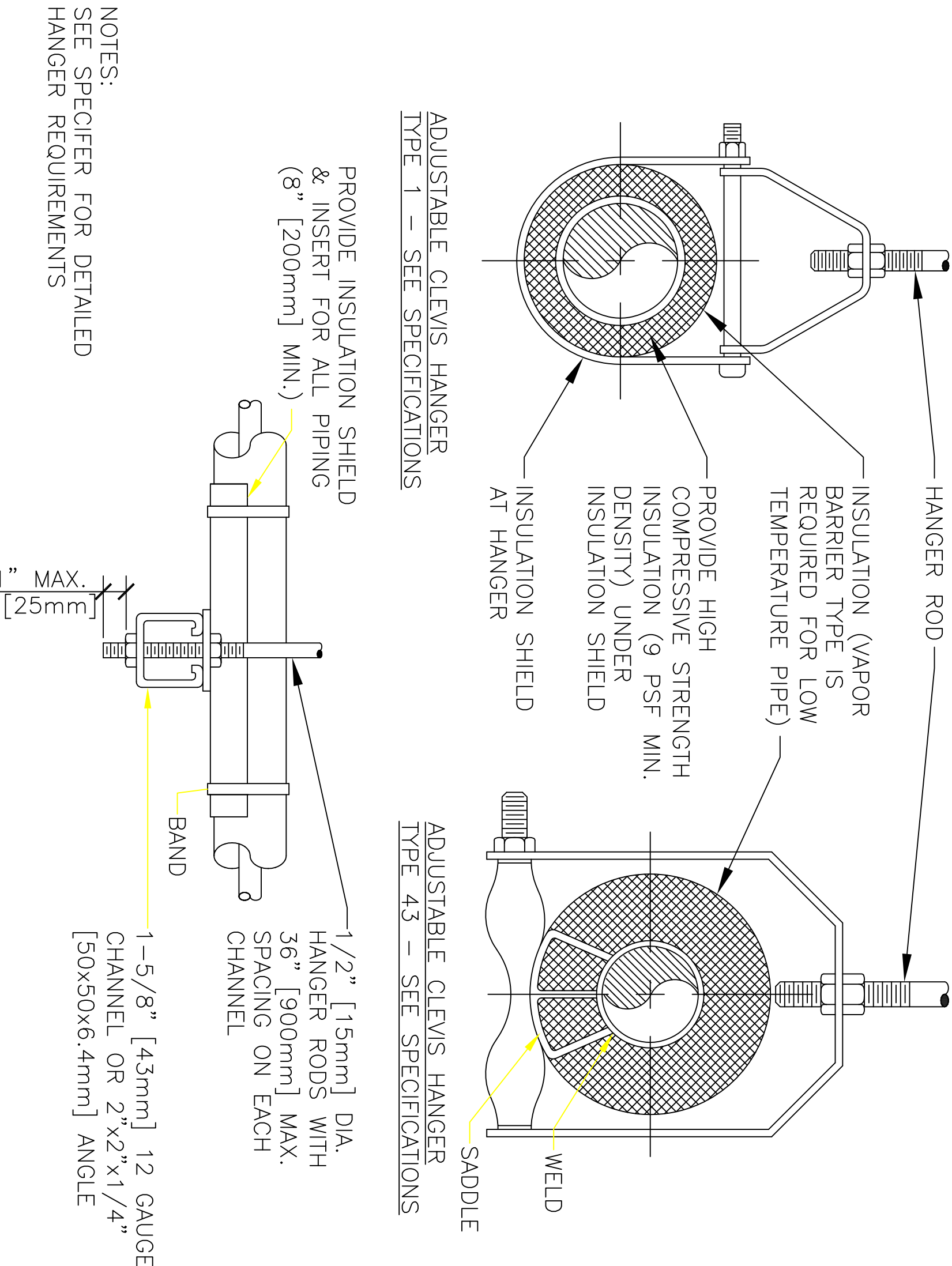
NOTE: 1. CPVC PIPE MAY BE USED ONLY IF APPROVED BY LOCAL VA AND IS INDOORS AND DOES NOT PASS THROUGH RATED BARRIERS.
2. DIELECTRIC FITTING TO BE USED WHEN TWO DISSIMILAR METALS ARE TO BE CONNECTED.

UNIT TYPE		A	B
DRAW THRU	2" [50mm]	PLUS X	X
BLOW THRU	1" [25mm] MINIMUM		2X

WHERE X = STATIC PRESSURE IN PAN

1 WATER COILS - PIPING CONNECTIONS
NTS

2 AIR HANDLING UNIT DRAIN TRAP DETAIL
NTS



MAXIMUM PIPE/TUBING SUPPORT SPACING																			
NOM. SIZE	IN.	THRU 3/4	1	1 1/4	1 1/2	2	2 1/2	3	4	5	6	8	10	12	14	16	18	20	24
FT.	THRU [20]	[25]	[32]	[40]	[50]	[63]	[75]	[100]	[125]	[150]	[200]	[250]	[300]	[350]	[400]	[450]	[500]	[600]	
PIPE	FT.	[2100]	[2100]	[2100]	[2200]	[3000]	[3400]	[3700]	[4100]	[4900]	[5200]	[5800]	[6700]	[7600]	[8200]	[8500]	[9100]	[9600]	
TUBING	FT.	5 FT	6	7	8	9	10	12	13	14	16								
	[mm]	[1500]	[1800]	[2100]	[2400]	[2700]	[3000]	[3700]	[4000]	[4100]	[4900]								
NOTE: FOR TRAPEZE HANGER TAKE SPACING OF SMALLEST SIZE ON TRAPEZE.																			

NOTE: FOR TRAPEZE HANGER TAKE SPACING OF SMALLEST SIZE ON TRAPEZE.

3 PIPE HANGERS
NTS

Unitary Computer Room Unit											
DESIGNATION	REFERENCE PRODUCT	SERIES	AEROM RATE @ 75° DB, 61°F WB				ELEC. DATA (SERVICE POINT)	Capacity@ 75° DB, 61°F WB return air, 481UH	CHW Flow Rate	EWT/ELT	REMARKS :
			DB	WB	RAE	RAE					
Liebert-3	Liebert	MODEL "CW051"	9300	460	3	46.7	60	236.7	51.2 GPM	45/55	Options: Upflow, 2-way standard pressure CHW valve, centrifugal fan, smoke detector, non-locking type disconnect, spare set of return air filters, Electric reheat, infrared humidiifier, IntelliSd Unit cord, remote temperature and humidity sensors, liquidet sensor, rear return air
Liebert-2	Replica Existing	MODEL "U025A-CAM"	460	460	3		60	10 Ton nominal			Options: Upflow, 2-way standard pressure CHW valve, centrifugal fan, smoke detector, non-locking type disconnect, spare set of return air filters, Electric reheat, infrared humidiifier, IntelliSd Unit cord, remote temperature and humidity sensors, liquidet sensor
Liebert-1	MODEL "U147C-AMM"	MODEL "U025A-CAM"	460	460	3	60		10 Ton nominal			Options: Upflow, 2-way standard pressure CHW valve, centrifugal fan, smoke detector, non-locking type disconnect, spare set of return air filters, Electric reheat, infrared humidiifier, IntelliSd Unit cord, remote temperature and humidity sensors, liquidet sensor

REVISIONS		DATE											
			<div>Dept. of Veterans Affairs Medical Center 1011 Honor Heights Drive Muskogee, OK 74401</div>										
			APPROVED: Medical Center Director		APPROVED: Chief of IT		APPROVED: Infection Control Nurse		DRAWING TITLE		PROJECT TITLE		DATE
			APPROVED: Assoc. Medical Center Director		APPROVED: Safety Manager		APPROVED: President ARS 2500		Details and Schedule		Bldg. 52 OT Server Room Backup Cooling		31Jul2015
			APPROVED: Chief of S&H		APPROVED: Industrial Hygienist		APPROVED		PROJECT NO. 623-16-108		CONTRACT NO.		SCALE
			APPROVED: Chief Engineering Service		APPROVED: Energy Manager		APPROVED		BUILDING NO. 52		ARCHITD FTE NAME 6230108 M-2		NTS
									LOCATION V.A.M.C MUSKOGEE, OK.		DRAWING NO. M-2		DWG. 3 OF 3

DEPARTMENT OF VETERANS AFFAIRS