

INFORMATION CONCERNING THE LOCATION(S) AND SIZES OF EXISTING PLUMBING LINES AND FIXTURES WAS OBTAINED FROM SIMILAR DRAWINGS AND CURSORY FIELD OBSERVATION. HOWEVER, ACTUAL "AS-BUILT" DRAWINGS WERE NOT AVAILABLE. CERTAIN INFORMATION ASSUMED IN THESE DRAWINGS (THE EXACT LOCATION(S) AND DIRECTION OF FLOW OF ALL EXISTING PLUMBING WORK IS UNKNOWN. REASONABLE FLOW WAS MADE TO ACCURATELY DEPICT THE EXISTING LOCATIONS, DIRECTION OF FLOW, DEPTH, SIZE, ETC. PRIOR TO THE CONSTRUCTION OF THE NEW PLUMBING LINES. THE FIELD CONDITIONS WERE FIELD VERIFICATION AND/OR CORRECTION.

A. EVERYTHING SHOWN IS EXISTING TO REMAIN UNLESS NOTED OTHERWISE.

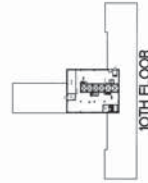
B. ALL PILING SHOWN IS LOCATED ABOVE FINISHED FLOOR UNLESS NOTED OTHERWISE.

C. CONTRACT DOCUMENTS CONSIST OF BOTH THE PROJECT MANUAL AND DRAWINGS, AND BOTH ARE INTENDED TO BE COMPLEMENTARY - ANYTHING APPEARING ON EITHER MUST BE EXECUTED THE SAME AS IF SHOWN ON BOTH.

D. THE CONTRACTOR SHALL INCLUDE IN BID PROPOSAL ALL COSTS REQUIRED TO COMPLETELY AND THOROUGHLY EXAMINE THE EXISTING CONDITIONS AND SHALL EXAMINE THE SCOPE OF WORK OF OTHER TRADES PRIOR TO SUBMITTING A BID PROPOSAL.

EX AND OR ME = EXISTING.

- 1 EXISTING MED. AIR COMPRESSOR TO BE REMOVED.
- 2 EXISTING VERTICAL RECEIVER TANK TO BE REMOVED.
- 3 REMOVE AIR SUPPLY TO THIS POINT.
- 4 EXISTING AIR DRYERS TO BE REMOVED.
- 5 EXISTING VACUUM PUMP TO BE REMOVED.
- 6 EXISTING ALARM PANELS TO BE REMOVED.
- 7 EXISTING LAB AIR COMPRESSOR TO REMAIN.
- 8 EXISTING DENTAL AIR EQUIPMENT TO REMAIN.
- 9 EXISTING CO AND DP MONITORING PANEL AND TUNING UP TO MAIN PIPE TO REMAIN.
- 10 EXISTING MOTOR STARTER PANEL, PIPING, AND CONDUNIT TO BE REMOVED. SEE ELECTRICAL SHEETS.
- 11 REMOVE SECTION OF AIR PIPING WITH MULTIPLE BLIND TEES AND GAUGES. REPLACE WITH A 12" SCHEDULE 40 STEEL OF COPPER PIPE AS REQUIRED. RECONNECT TO EXISTING MONITORING PANEL AS SECTIONED.
- 12 EXISTING VACUUM PUMP CONTROL PANEL, PIPING, AND CONDUNIT TO BE REMOVED.
- 13 REMOVE EXISTING PIPING TO THIS POINT. SEE REVISED PLAN.
- 14 REMOVE EXISTING EXHAUST FROM COMPRESSOR OVER TO RISER FLANGED. SEE REVISED DRAWINGS.
- 15 RELOCATE EXISTING TOOL CABINET. SEE SHEET PP101 FOR NEW LOCATION.
- 16 ACCESS PANELS TO 9TH FLOOR UTILITY ELEVATOR.
- 17 EXISTING FILTERS AND RTH TO REMAIN. SEE ISOMETRIC F2/PP201.
- 18 REMOVE EXISTING EXHAUST FROM COMPRESSOR OVER TO ELBOW. CAP PIPE.
- 19 REMOVE AND RELOCATE FLANGED STRAINER. SEE REVISED DRAWINGS.
- 20 RELOCATE 1/2" COPPER DRAIN AROUND NEW VACUUM EQUIPMENT AS REQUIRED.
- 21 REMOVE EXISTING COPPER DRAIN LINES LAYING ON FLOOR FROM MED AIR EQUIPMENT OVER TO FLOOR DRAIN.



KEY PLAN
NTB

BID DOCUMENTS FOR
CONSTRUCTION

paradigm

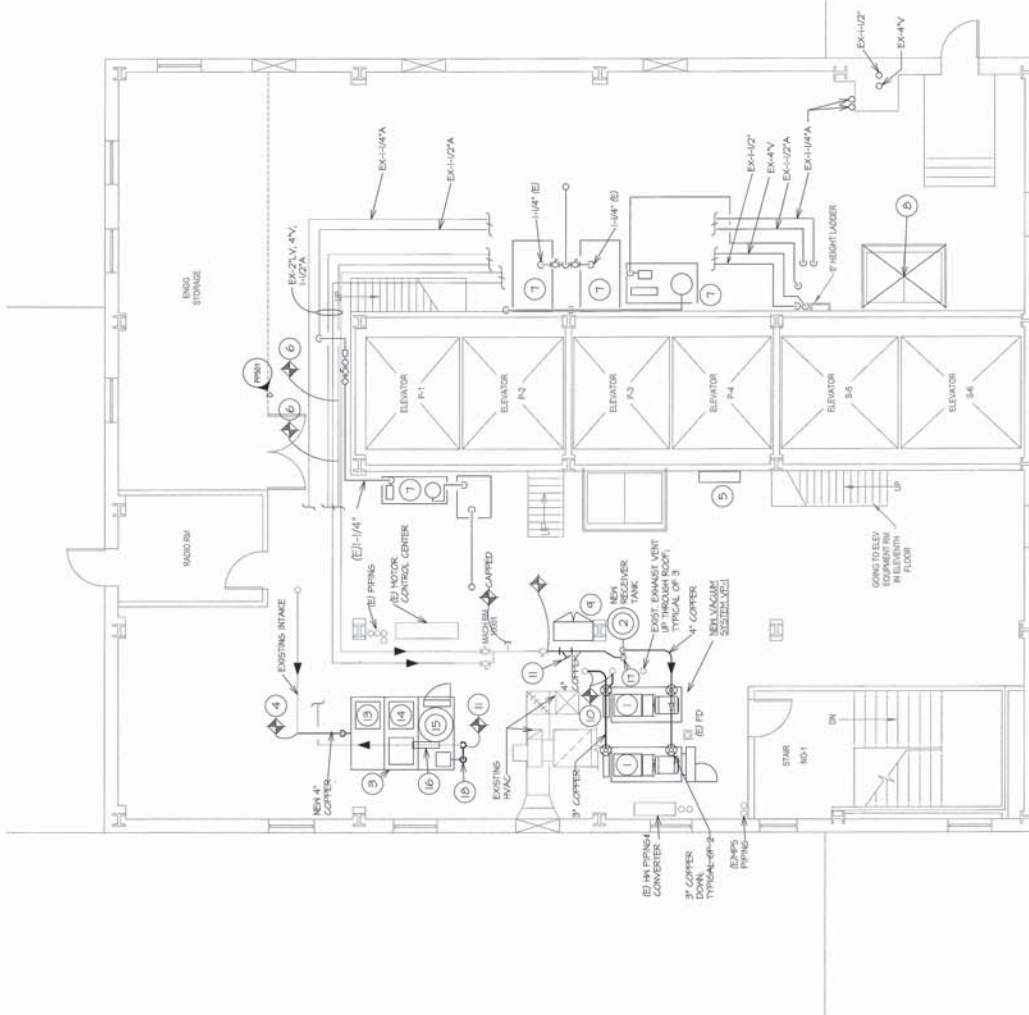
DAE

DESIGN-AIRE ENGINEERING, INC.
220 North College Avenue
Indianapolis, Indiana 46203
voice (317) 654-9090
fax (317) 654-9393
E-mail: info@design-aire.com
www.design-aire.com

PARTIAL PIPING PLAN DEMOLITION
TENTH 5 008REPLACE MEDICAL AIR
COMPRESSORS AND VACUUMProject Number
603-16-601

Office of
Construction
and Facilities
Management

Department of
Veterans Affairs



F4 PARTIAL PIPING PLAN REVISED - TENTH FLOOR

FIELD VERIFY:

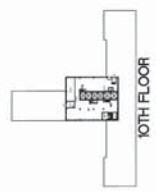
INFORMATION CONCERNING THE LOCATION(S) AND SIZES OF EXISTING PLUMBING LINES AND EQUIPMENT SHALL BE OBTAINED FROM THE OWNER'S RECORD DRAWINGS. HOWEVER, ACTUAL "AS-BUILT" DRAWINGS WERE NOT AVAILABLE. CERTAIN INFORMATION CONCERNING THE LOCATION OF THE EXISTING PLUMBING LINES AND EQUIPMENTS HAVE BEEN OBTAINED FROM THE FIELD SURVEY. THE EXISTING PLUMBING LINES AND EQUIPMENTS SHALL BE DEPICTED TO THE BEST OF THE ENGINEER'S KNOWLEDGE. THE EXISTING PLUMBING WORK IS UNKNOW. REASONABLE EFFORT WAS MADE TO ACCURATELY DEPICT THE EXISTING LOCATIONS, DIRECTION OF FLOW, DEPTH, SIZE, ETC., PRIOR TO THE FIELD SURVEY. THE EXISTING PLUMBING WORK IS UNKNOW. REASONABLE EFFORT WAS MADE TO ACCURATELY DEPICT THE EXISTING LOCATIONS, DIRECTION OF FLOW, DEPTH, SIZE, ETC., PRIOR TO THE FIELD SURVEY. THE EXISTING PLUMBING WORK IS UNKNOW. REASONABLE EFFORT WAS MADE TO ACCURATELY DEPICT THE EXISTING LOCATIONS, DIRECTION OF FLOW, DEPTH, SIZE, ETC., PRIOR TO THE FIELD SURVEY.

GENERAL NOTES:

- A. EVERYTHING SHOWN IS EXISTING TO REMAIN UNLESS NOTED OTHERWISE.
- B. ALL PIPING SHOWN IS LOCATED ABOVE FINISHED FLOOR UNLESS NOTED OTHERWISE.
- C. CONTRACT DOCUMENTS CONSIST OF BOTH THE PROJECT MANUAL AND DRAWINGS, AND BOTH ARE INTENDED TO BE COMPLEMENTARY - ANYTHING APPEARING ON EITHER MUST BE EXECUTED THE SAME AS IF SHOWN ON BOTH.
- D. THE CONTRACTOR SHALL INCLUDE IN BID PROPOSAL ALL COSTS REQUIRED TO COMPLETELY AND ACCURATELY DEPICT THE EXISTING PLUMBING WORK. THE CONTRACTOR SHALL EXAMINE THE SCOPE OF WORK OF OTHER TRADES PRIOR TO SUBMITTING A BID PROPOSAL.
- E. EX AND OR E = EXISTING.

PLAN NOTES

- 1. NEW VACUUM PUMP MODULAR SECTION OF SYSTEM VP-1.
- 2. NEW VERTICAL RECEIVER TANK OF SYSTEM VP-1.
- 3. NEW DISCHARGE MID AIR SYSTEM MDC-1.
- 4. CONNECT 4" COPPER INTAKE TO EXISTING.
- 5. NEW ALARM PANEL, MOUNTED TO WALL.
- 6. NEW SECTION OF AIR PIPING, WITH CONNECTION FOR EXISTING CO AND DP MONITORING PIPING.
- 7. EXISTING EQUIPMENT TO REMAIN.
- 8. ACCESS PANELS TO 9TH FLOOR UTILITY ELEVATOR.
- 9. RELOCATED TOOL CABINET.
- 10. CONNECT NEW 4" COPPER TO EXISTING EXHAUST RISER.
- 11. RELOCATED FLANGED STRAINER.
- 12. EXISTING CO AND DP MONITOR.
- 13. COMPRESSOR SET #1 OR SYSTEM MDC-1.
- 14. COMPRESSOR SET #2 OR SYSTEM MDC-1.
- 15. RECEIVER TANK, AIR DRIVERS, AND CONTROLS OF MDC-1.
- 16. EXISTING FILTERS AND PPM TO REMAIN. SEE SOMETHING F4/P250.
- 17. CONNECT PIPING TO INLET AND OUTLET TO RECEIVER AS REQUIRED.
- 18. INSTALL A REDUCER AND UNION FROM 1-1/4" UP TO 2" COPPER.

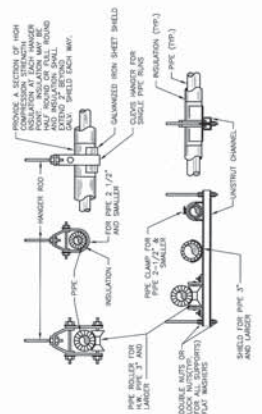


CONSULTANTS		ARCHITECT/ENGINEERS		BD DOCUMENTS FOR CONSTRUCTION	
DAE DESIGN-AIRE ENGINEERING, INC. 10000 W. 10th Ave. Suite 100 Denver, CO 80231 Tel: 303.733.4400 Fax: 303.733.4401 www.dae-engineering.com		paradigm Architecture Engineering Design-Build 300 East Colfax Ave., Suite 1000 Denver, CO 80202 Tel: 303.733.4400 Fax: 303.733.4401 www.paradigm.com		Office of Construction and Facilities Management Project Number: 600-16-001 Building Number: 1 Drawing Number: PP101 Date: 10-0-2008 Checked: DH Drawn: BE	

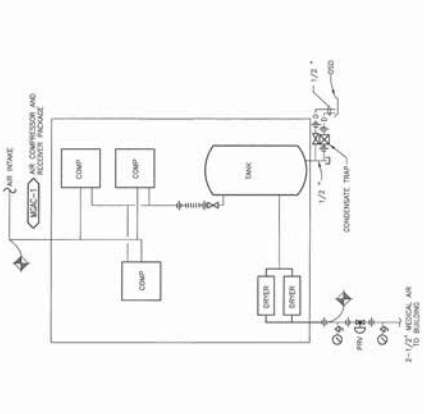
B. ALL EXISTING PIPING, DUCTWORK, SPRINKLERS, CONDUIT, LIGHTING OR OTHER CONSTRUCTION SHALL BE RELOCATED AS REQUIRED FOR ALL DEMOLITION AND INSTALLATION WORK.



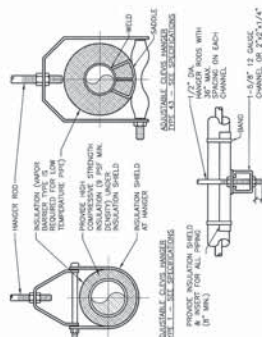
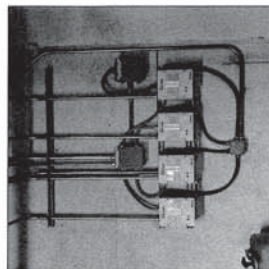
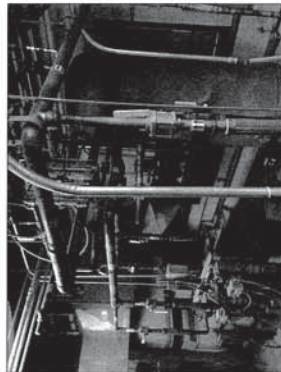
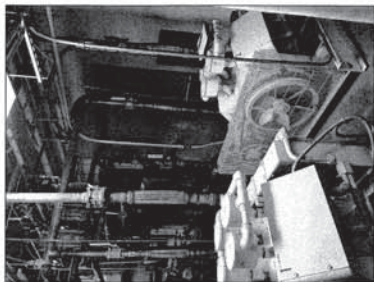
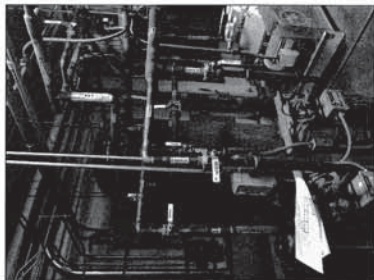
B8 TYPICAL DRAIN FOR AIR COMPRESSOR AND DRYER
NOT TO SCALE



PIPE HANGERS AND SUPPORTS DETAIL



F8 MEDICAL AIR SYSTEM - STANDARD PIPING DIAGRAM



SIDE VIEW TRAPEZE HANGER FOR UP TO

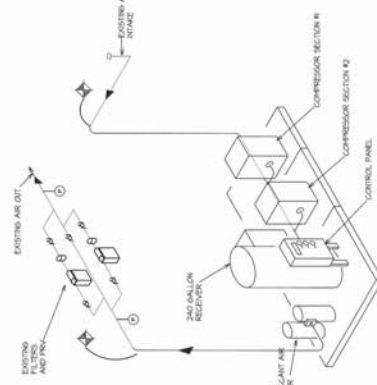
MAXIMUM PIPE/TUBING SUPPORT SPACING										
NOM. SIZE (IN.)	THRU 3/4	1	1 1/4	1 1/2	2	2 1/2	3	4	5	6
PIPE (FT.)	7	7	9	10	11	12	14	16	17	19
TUBING (FT.)	5 FT.	6	7	8	8	9	10	12	13	16

NUMBER THAT COULD BE SUBMITTED FOR TARIFF

NOTES:
SEE SPECIFICATIONS FOR DETAILS AND/OR DIMENSIONS

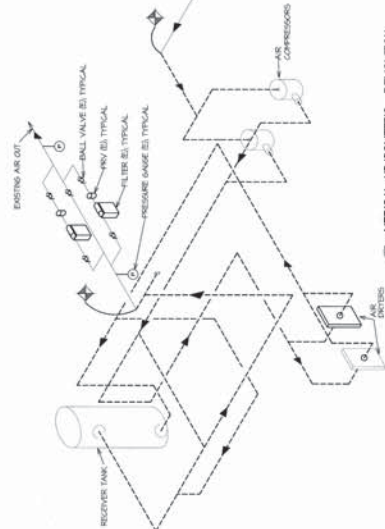
F6 PIPE HANGERS
MADE TO ORDER

EXISTING CONDITIONS PHOTOGRAPHS



F4 MEDICAL AIR ISOMETRIC - REVISED
NOT TO SCALE

©



F1 MEDICAL AIR ISOMETRIC - DEMOLITION
NOT TO SCALE



FIELD VERIFY:

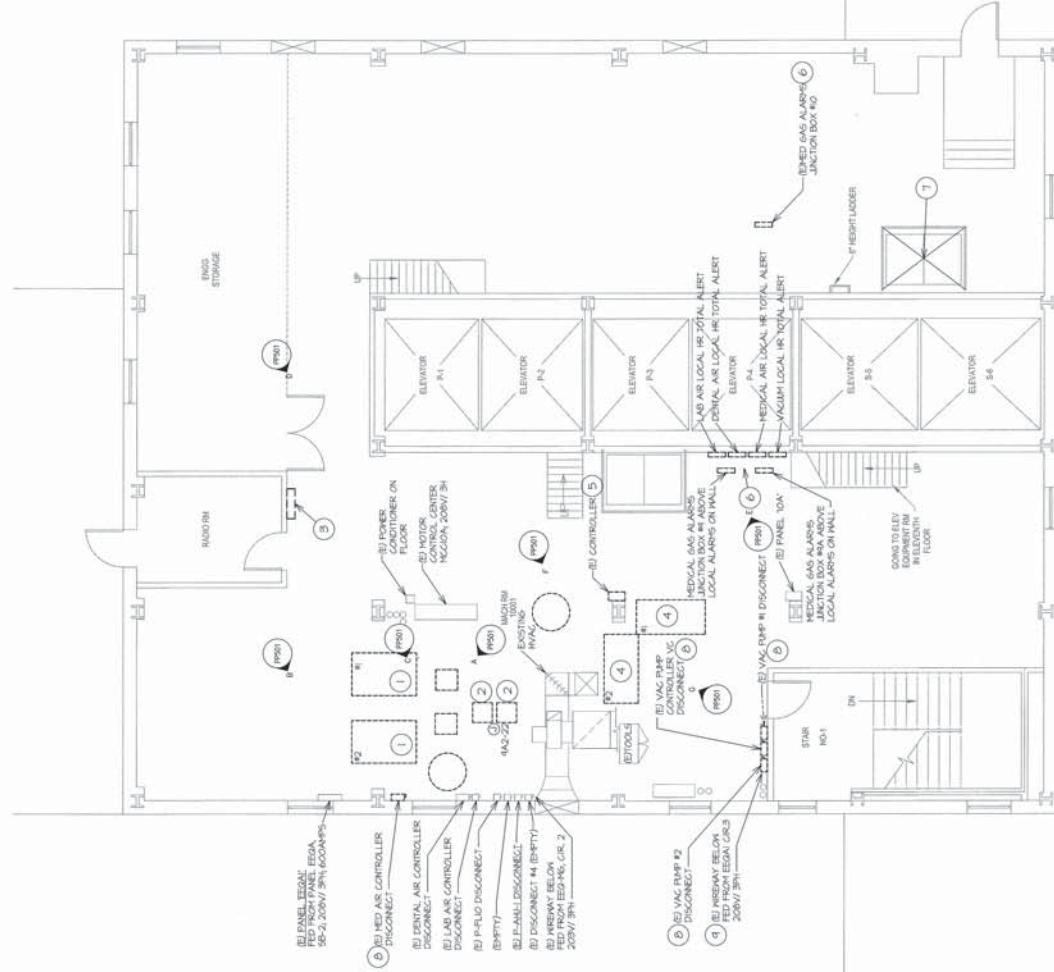
EXISTING ELECTRICAL EQUIPMENT WAS OBTAINED FROM SIMILAR BUILDING DRAWINGS AND FIELD VERIFICATION. FIELD VERIFICATION OF THE EXISTING ELECTRICAL WORK MUST BE VERIFIED IN THE FIELD TO DETERMINE THE EXACT LOCATION, DEPTH, SIZE, ETC. PRIOR TO THE START OF THE WORK. THE CONTRACTOR SHALL REPORT ANY DISCREPANCIES TO THE ARCHITECT FOR VERIFICATION AND/OR CORRECTION.

GENERAL NOTES:

- ALL WORK SHALL BE IN ACCORDANCE WITH THE BEST QUALITY STANDARDS OF THE TRADE, AND SHALL CONFORM WITH ALL FEDERAL, STATE, AND LOCAL CODES AND STANDARDS.
- CONTRACT DOCUMENTS CONSIST OF BOTH THE PROJECT MANUAL AND DRAWINGS, AND THE CONTRACTOR SHALL BE RESPONSIBLE FOR OBTAINING ANYTHING APPEARING ON EITHER MUST BE EXCLUDED FROM THE WORK.
- THE CONTRACTOR SHALL INCLUDE IN THE WORKMAN ALL COSTS REQUIRED TO COMPLETELY AND PROPERLY INSTALL ALL WORK REQUIRED FOR THIS PROJECT, AND SHALL EXAMINE THE SCOPE OF WORK OF OTHER TRADES PRIOR TO SUBMITTING A BID PROPOSAL.
- CONSTRUCTION DOCUMENTS SHALL BE FOLLOWED AS CLOSELY AS POSSIBLE. HOWEVER, THE CONTRACTOR SHALL BE RESPONSIBLE FOR OBTAINING ANYTHING APPEARING ON EITHER MUST BE EXCLUDED FROM THE WORK.
- ALL CIRCUITS OVER 100' IN LENGTH SHALL BE A MINIMUM #10 AWG CONDUCTOR.
- WIRING SYSTEM SHALL BE CONDUIT AND WIRE. MINIMUM WIRE SIZE SHALL BE #12 AWG. USE SOLID CONDUCTOR FOR #10 AWG AND SMALLER. USE STRANDED IN LARGER SIZES. MINIMUM CONDUIT SIZE SHALL BE 3/4".
- UPDATE DATA SHEET IN ALL PANELS TO REFLECT CHANGES.
- ALL UNUSED CONDUIT AND WIRE TO BE REMOVED BACK TO SOURCE.
- DEVICE SHOWN DASHED LINEWORK SHALL BE REMOVED.

PLAN NOTES:

- DISCONNECT POWER TO EXISTING MED AIR COMPRESSORS AND PREPARE FOR NEW EQUIPMENT. REMOVE ALL ASSOCIATED CONDUIT AND WIRE BACK TO THE SOURCE.
- DISCONNECT POWER TO EXISTING AIR DRYERS AND REMOVE CONDUIT AND WIRE BACK TO SOURCE POWER.
- DISCONNECT POWER TO MOTOR STARTER AND REMOVE EXISTING STARTER, PREPARE FOR NEW STARTER.
- DISCONNECT POWER TO EXISTING VACUUM PUMP AND PREPARE FOR NEW EQUIPMENT. REMOVE ALL ASSOCIATED CONDUIT AND WIRE BACK TO THE SOURCE.
- DISCONNECT POWER AND CONTROLS TO EXISTING VACUUM CONTROL PANEL.
- EXISTING ALARM PANELS TO BE REMOVED.
- ACCESS PANELS TO 9TH FLOOR UTILITY ELEVATOR.
- REMOVE EXISTING DISCONNECT SWITCH. REMOVE ALL ASSOCIATED CONDUIT AND WIRE BACK TO THE SOURCE.
- REMOVE EXISTING WIRING. REMOVE ALL ASSOCIATED CONDUIT AND WIRE BACK TO THE SOURCE.



F4 PARTIAL ELECTRICAL PLAN DEMOLITION - TENTH FLOOR



CONSULTANTS		ARCHITECT/ENGINEERS		BD DOCUMENTS FOR CONSTRUCTION	
DAE DESIGN-AIRE ENGINEERING, INC. 10000 W. 10th Ave., Suite 1000 Denver, CO 80202 Tel: (303) 440-8000 Fax: (303) 440-8001 www.dae-engineering.com		paradigm Architecture Engineering Design-Build 300 Long Creek Rd., Suite 100 Denver, CO 80202 Tel: (303) 733-8000 www.paradigm.com		Office of Construction and Facilities Management ED101 10000 W. 10th Ave., Suite 1000 Denver, CO 80202 Tel: (303) 440-8000 Fax: (303) 440-8001 www.dae-engineering.com	
Project Name: PARTIAL ELECTRICAL PLAN DEMOLITION - TENTH FLOOR		Project Number: 600-16-601		Drawing Number: 1	
Drawing Title: PARTIAL ELECTRICAL PLAN DEMOLITION - TENTH FLOOR		Location: MEDICAL CENTER		Drawing Date: 10-10-2008	
Approved Project Director: [Signature]		Checked: [Signature]		Date: 10-10-2008	
[Stamp: STATE OF COLORADO PROFESSIONAL ENGINEER]		[Stamp: STATE OF COLORADO PROFESSIONAL ARCHITECT]		[Stamp: STATE OF COLORADO PROFESSIONAL ENGINEER]	

