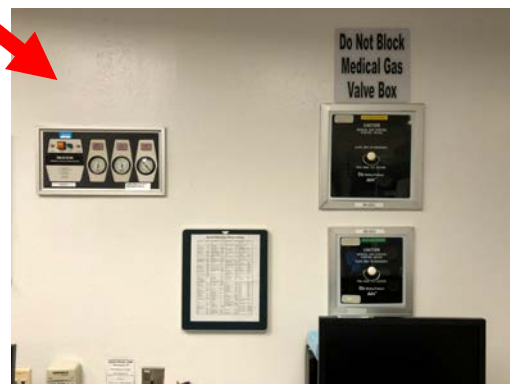
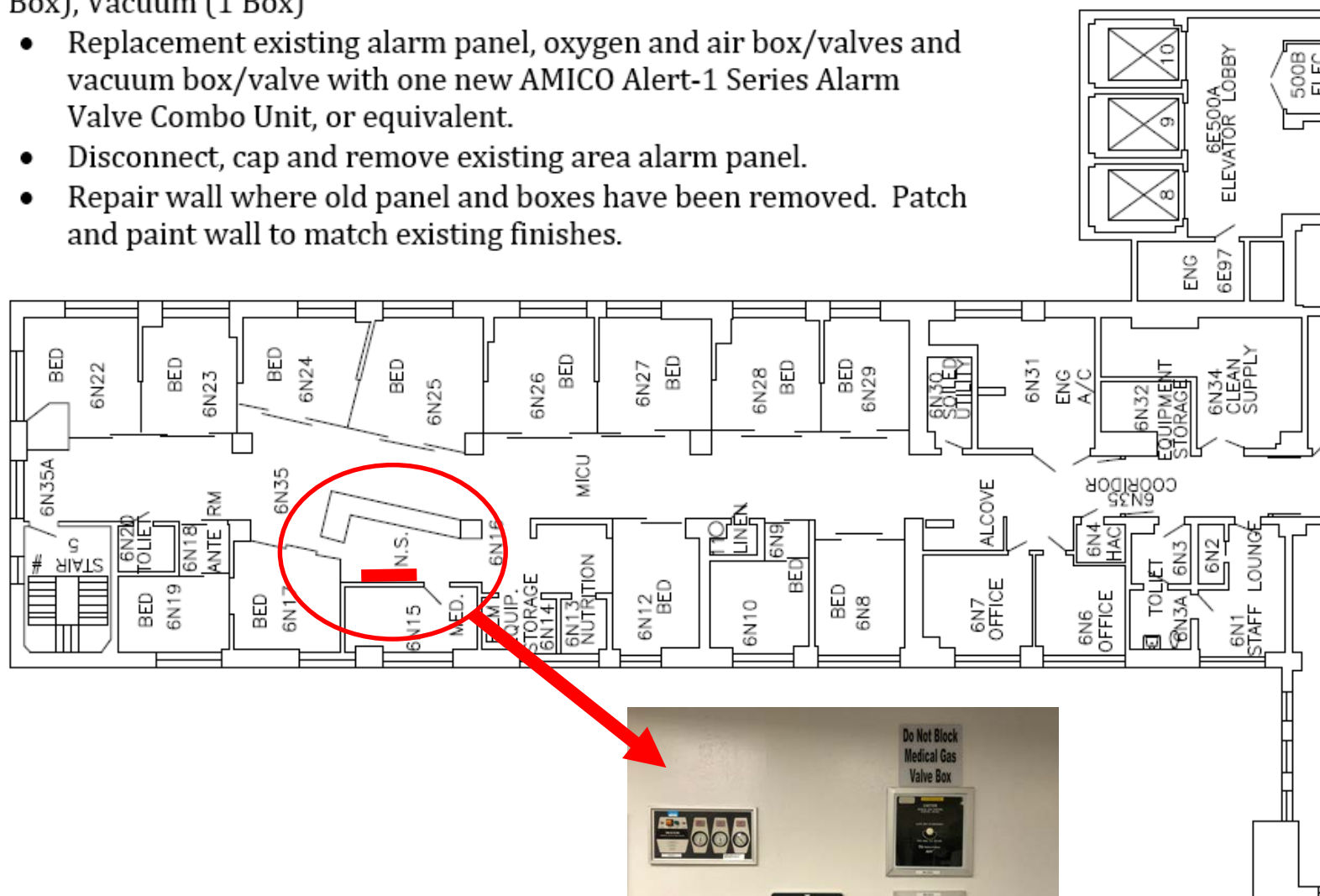


# PROJECT 667-18-114 CORRECT MEDICAL GAS & VACUUM DISCREPANCIES (Sketch 1 of 11)

- **TASK 1A:** 6N Nursing Station Existing: Alarm Panel (1), Oxygen and Air (1 Box), Vacuum (1 Box)

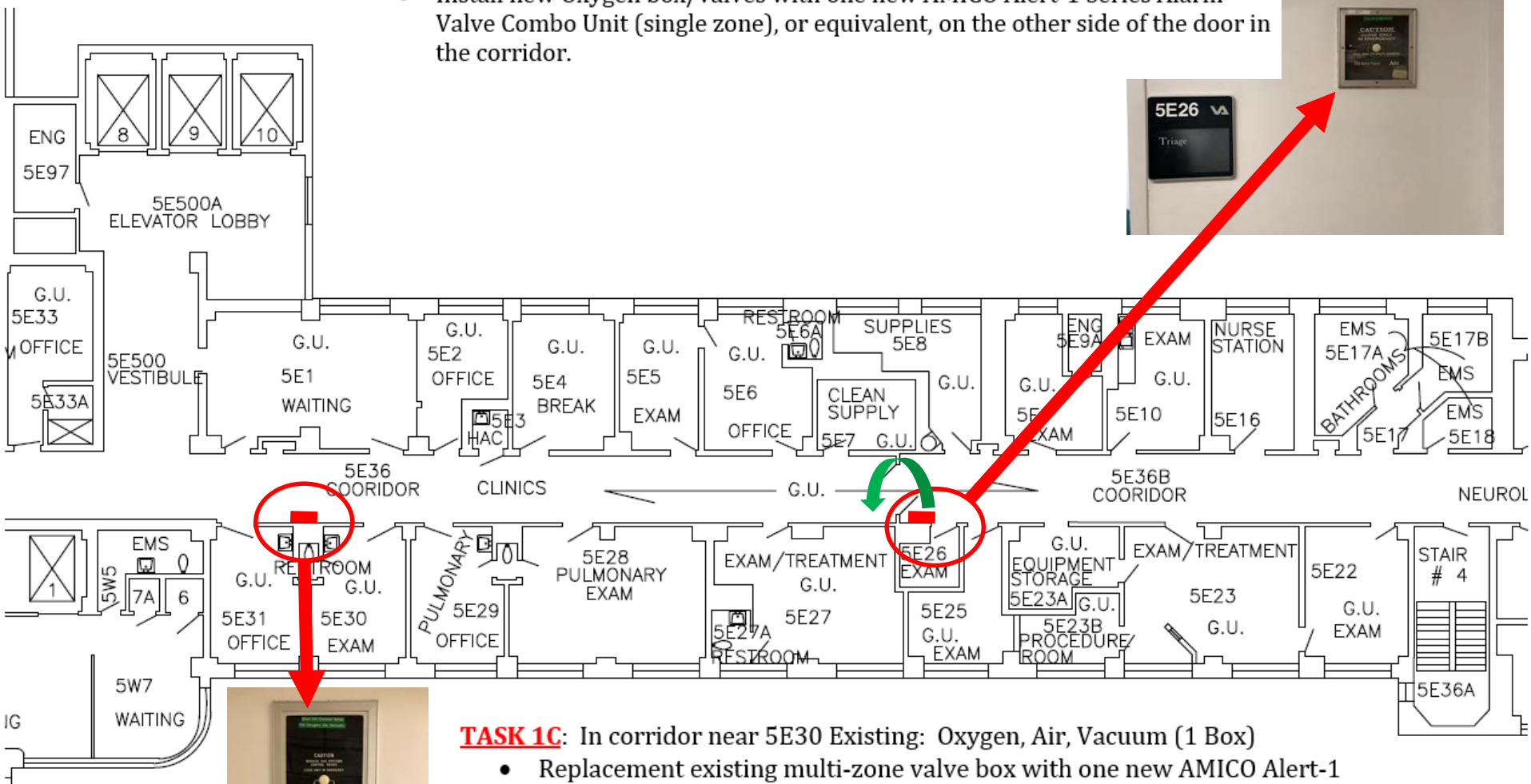
- Replacement existing alarm panel, oxygen and air box/valves and vacuum box/valve with one new AMICO Alert-1 Series Alarm Valve Combo Unit, or equivalent.
- Disconnect, cap and remove existing area alarm panel.
- Repair wall where old panel and boxes have been removed. Patch and paint wall to match existing finishes.



# PROJECT 667-18-114 CORRECT MEDICAL GAS & VACUUM DISCREPANCIES (Sketch 2 of 11)

## **TASK 1B:** In corridor near 5E26 Existing: Oxygen (1 Box)

- Disconnect, cap and remove existing Oxygen box located behind door.
- Repair wall where old box has been removed. Patch and paint wall to match existing finishes.
- Install new Oxygen box/valves with one new AMICO Alert-1 Series Alarm Valve Combo Unit (single zone), or equivalent, on the other side of the door in the corridor.



## **TASK 1C:** In corridor near 5E30 Existing: Oxygen, Air, Vacuum (1 Box)

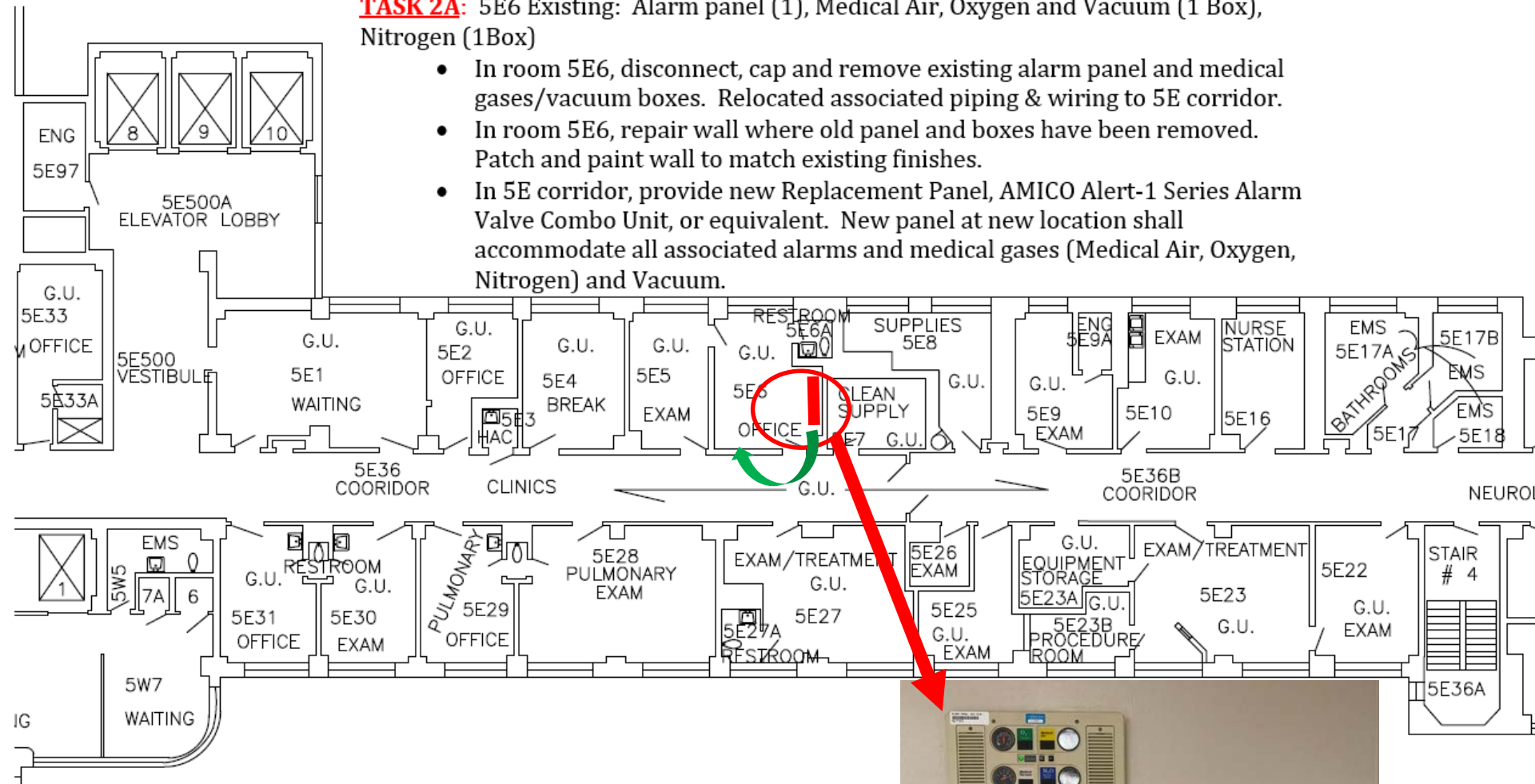
- Replacement existing multi-zone valve box with one new AMICO Alert-1 Series Alarm Valve Combo Unit, or equivalent.
- Disconnect, cap and remove existing area alarm panel.
- Repair wall (patch and paint) as necessary to match existing finishes.



# PROJECT 667-18-114 CORRECT MEDICAL GAS & VACUUM DISCREPANCIES (Sketch 3 of 11)

**TASK 2A:** 5E6 Existing: Alarm panel (1), Medical Air, Oxygen and Vacuum (1 Box), Nitrogen (1Box)

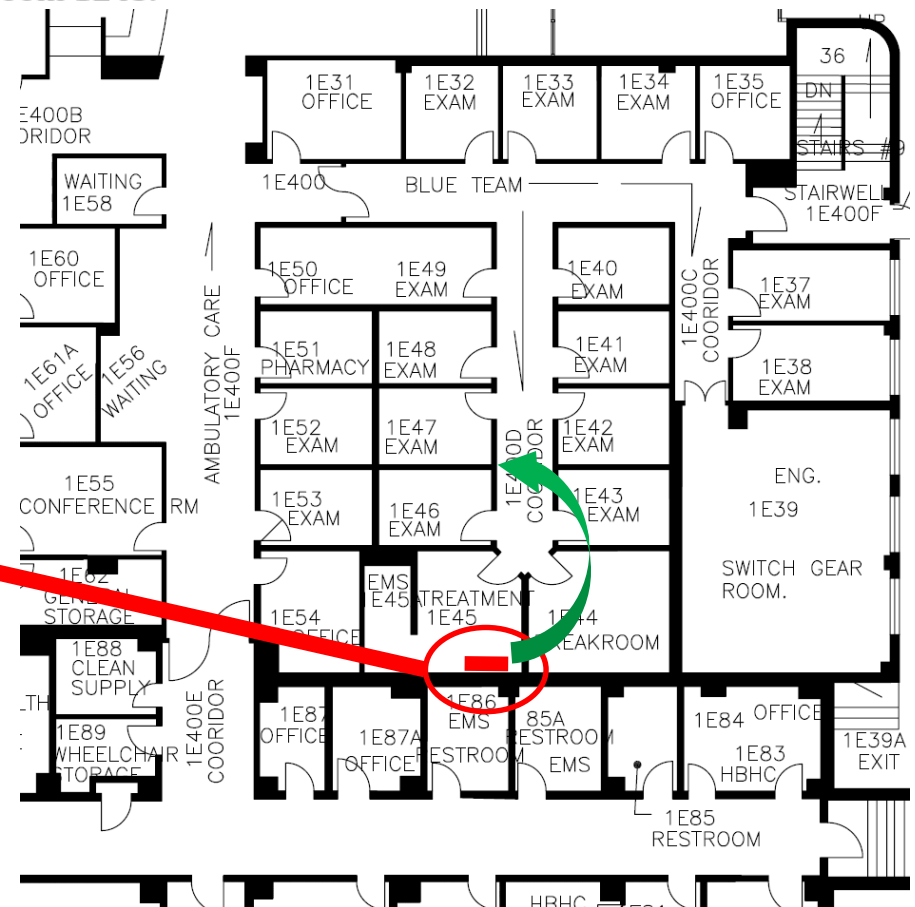
- In room 5E6, disconnect, cap and remove existing alarm panel and medical gases/vacuum boxes. Relocated associated piping & wiring to 5E corridor.
- In room 5E6, repair wall where old panel and boxes have been removed. Patch and paint wall to match existing finishes.
- In 5E corridor, provide new Replacement Panel, AMICO Alert-1 Series Alarm Valve Combo Unit, or equivalent. New panel at new location shall accommodate all associated alarms and medical gases (Medical Air, Oxygen, Nitrogen) and Vacuum.



## PROJECT 667-18-114 CORRECT MEDICAL GAS & VACUUM DISCREPANCIES (Sketch 4 of 11)

**TASK 2B:** 1E45 Existing: Alarm panel (1) and Medical Air, Oxygen and Vacuum (1 Box),

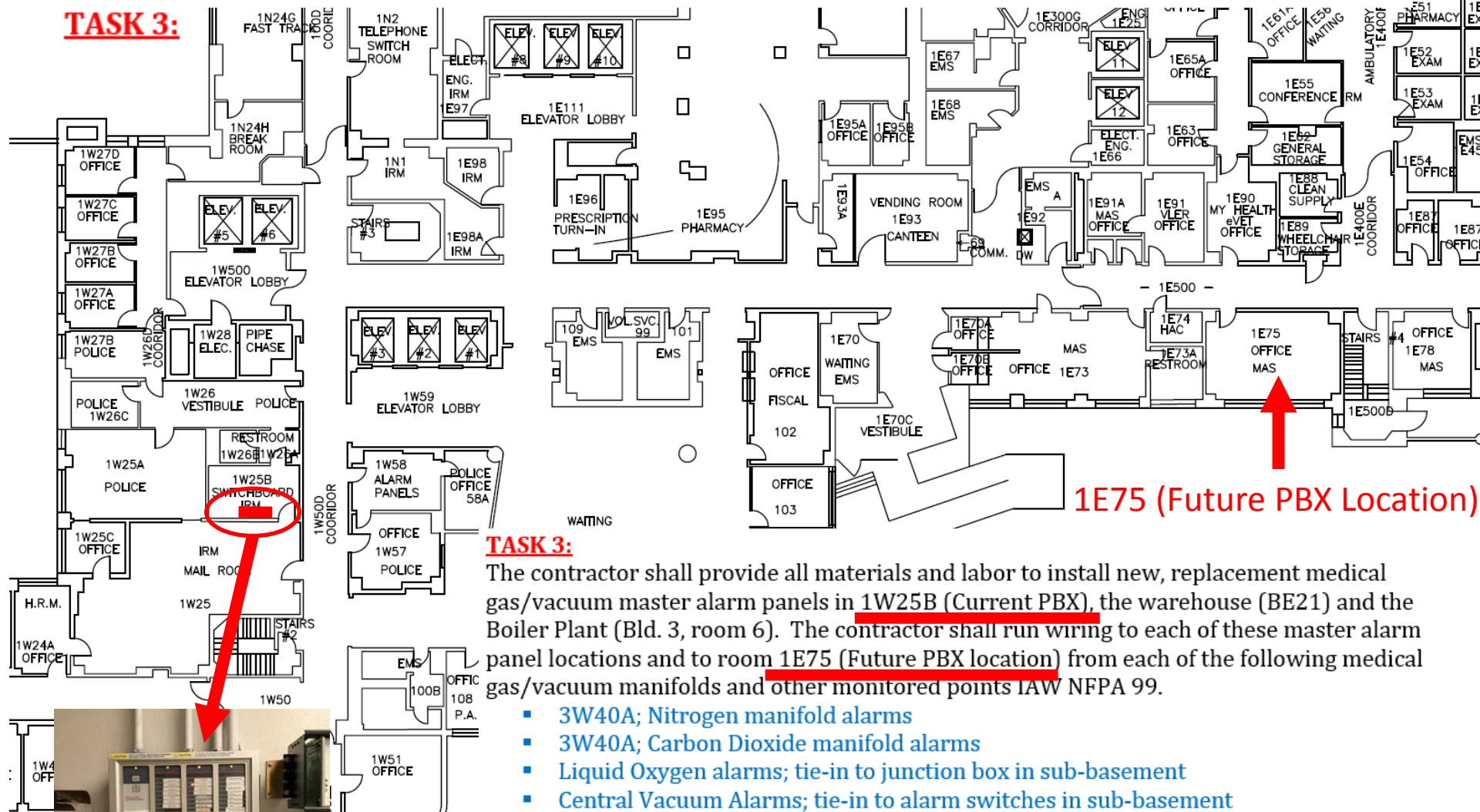
- In room 1E45, disconnect, cap and remove existing alarm panel and medical gases/vacuum boxes. Relocated associated piping corridor just outside the room. Existing alarm panel in 1E45 is not required.
- In room 1E45, repair wall where old panel and boxes have been removed. Patch and paint wall to match existing finishes.
- In 1E corridor between rooms 1E46&47, provide and install new zone valve box (AMICO Alert-1 Multiple Zone Indicator Panel, or equivalent). New valve box at new location shall accommodate all associated medical gases (Medical Air, Oxygen and Vacuum) from room 1E45.





# PROJECT 667-18-114 CORRECT MEDICAL GAS & VACUUM DISCREPANCIES (Sketch 5 of 11)

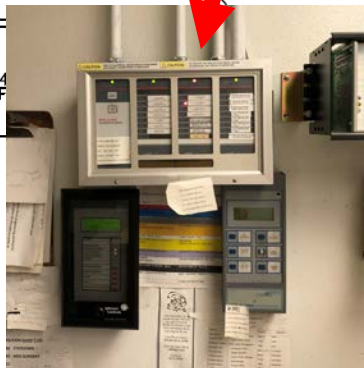
## TASK 3:



## TASK 3:

The contractor shall provide all materials and labor to install new, replacement medical gas/vacuum master alarm panels in 1W25B (Current PBX), the warehouse (BE21) and the Boiler Plant (Bld. 3, room 6). The contractor shall run wiring to each of these master alarm panel locations and to room 1E75 (Future PBX location) from each of the following medical gas/vacuum manifolds and other monitored points IAW NFPA 99.

- 3W40A; Nitrogen manifold alarms
- 3W40A; Carbon Dioxide manifold alarms
- Liquid Oxygen alarms; tie-in to junction box in sub-basement
- Central Vacuum Alarms; tie-in to alarm switches in sub-basement
- Medical Air Alarms; tie-in to alarm switches in sub-basement
- BW13; Nitrous Oxide manifold alarm
- BW14; Oxygen high, low-pressure alarm switches
- Replacement master alarm panels shall be AMICO Alert-2 Series, 40-point, Master Alarm Panels, or equivalent.
- The contractor shall also run wiring from medical gas/vacuum manifolds and other monitored points listed above to 1E75 (in preparation of eventual move of master alarm panel from PBX location). Coil at least 30' above the ceiling.



1W25B (Current PBX Location)

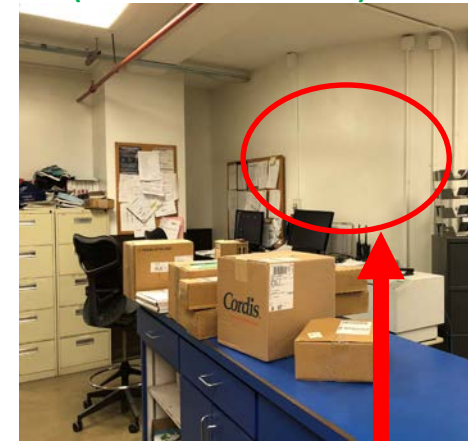
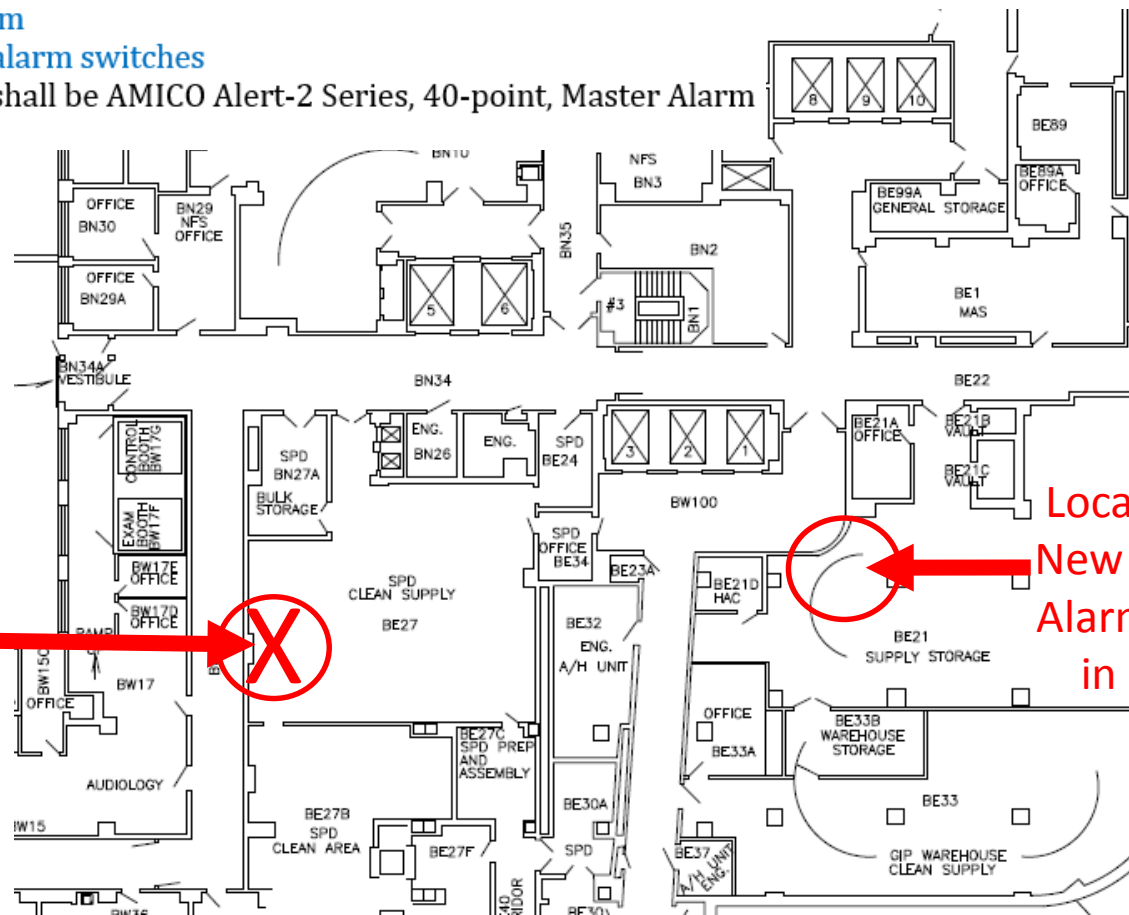
# PROJECT 667-18-114 CORRECT MEDICAL GAS & VACUUM DISCREPANCIES (Sketch 6 of 11)

## TASK 3:

The contractor shall provide all materials and labor to install new, replacement medical gas/vacuum master alarm panels in 1W25B (Current PBX), the warehouse (BE21) and the Boiler Plant (Bld. 3, room 6). The contractor shall run wiring to each of these master alarm panel locations and to room 1E75 (Future PBX location) from each of the following medical gas/vacuum manifolds and other monitored points IAW NFPA 99.

- 3W40A; Nitrogen manifold alarms
- 3W40A; Carbon Dioxide manifold alarms
- Liquid Oxygen alarms; tie-in to junction box in sub-basement
- Central Vacuum Alarms; tie-in to alarm switches in sub-basement
- Medical Air Alarms; tie-in to alarm switches in sub-basement
- BW13; Nitrous Oxide manifold alarm
- BW14; Oxygen high, low-pressure alarm switches
- Replacement master alarm panels shall be AMICO Alert-2 Series, 40-point, Master Alarm Panels, or equivalent.

Location of Existing Master Alarm Panel in BE27  
(To be removed)



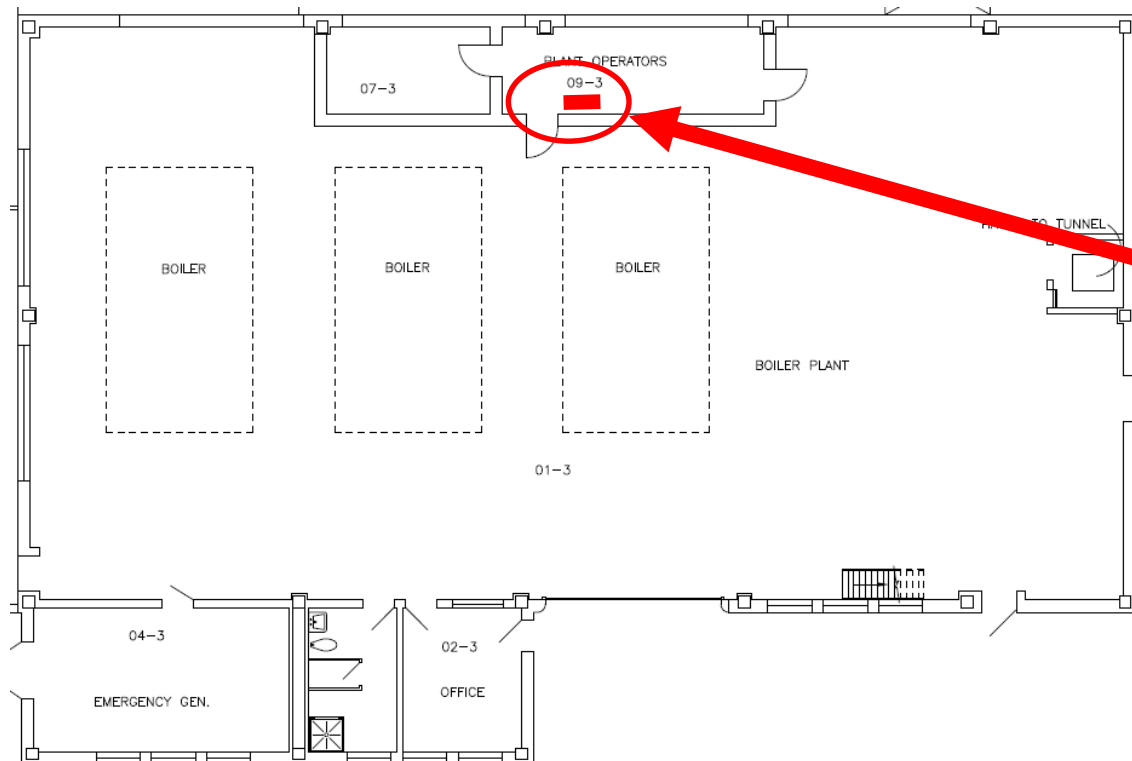
Location of New Master Alarm Panel in BE21

# PROJECT 667-18-114 CORRECT MEDICAL GAS & VACUUM DISCREPANCIES (Sketch 7 of 11)

## **TASK 3:**

The contractor shall provide all materials and labor to install new, replacement medical gas/vacuum master alarm panels in 1W25B (Current PBX), the warehouse (BE21) and the Boiler Plant (Bld. 3, room 6). The contractor shall run wiring to each of these master alarm panel locations and to room 1E75 (Future PBX location) from each of the following medical gas/vacuum manifolds and other monitored points IAW NFPA 99.

- 3W40A; Nitrogen manifold alarms
- 3W40A; Carbon Dioxide manifold alarms
- Liquid Oxygen alarms; tie-in to junction box in sub-basement
- Central Vacuum Alarms; tie-in to alarm switches in sub-basement
- Medical Air Alarms; tie-in to alarm switches in sub-basement
- BW13; Nitrous Oxide manifold alarm
- BW14; Oxygen high, low-pressure alarm switches
- Replacement master alarm panels shall be AMICO Alert-2 Series, 40-point, Master Alarm Panels, or equivalent.



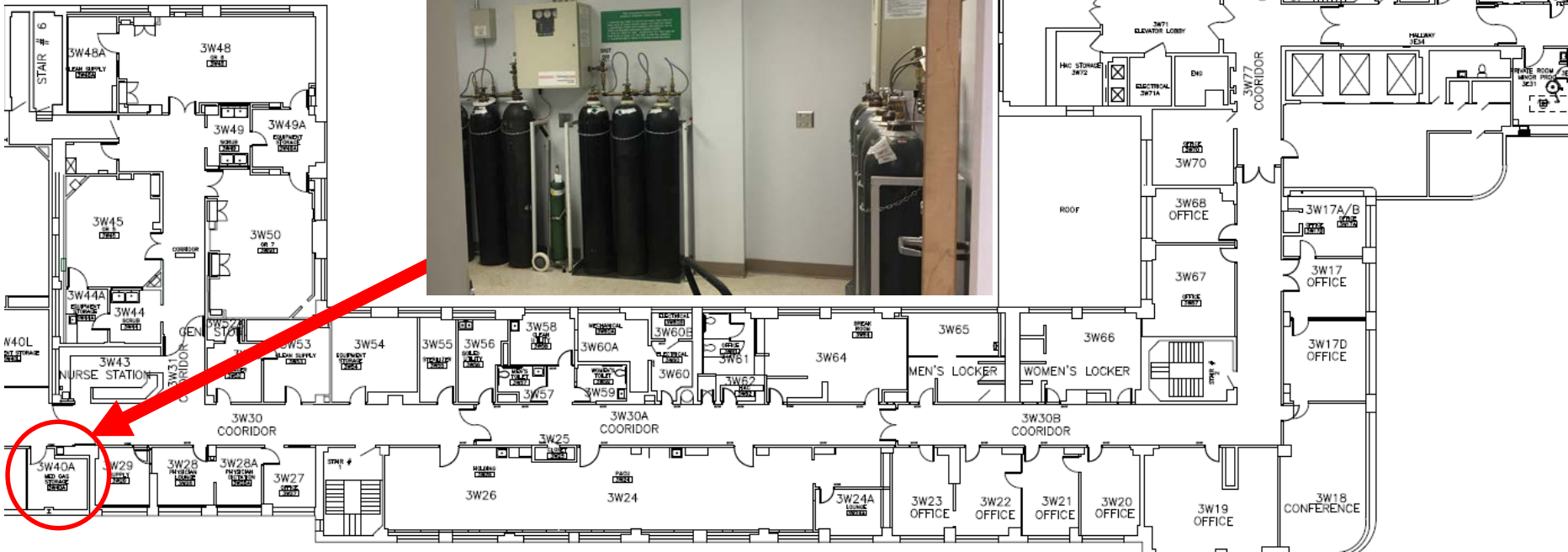


## **TASK 3:**

The contractor shall provide all materials and labor to install new, replacement medical gas/vacuum master alarm panels in 1W25B (Current PBX), the warehouse (BE21) and the Boiler Plant (Bld. 3, room 6). The contractor shall run wiring to each of these master alarm panel locations and to room 1E75 (Future PBX location) from each of the following medical gas/vacuum manifolds and other monitored points IAW NFPA 99.

- 3W40A; Nitrogen manifold alarms
- 3W40A; Carbon Dioxide manifold alarms
- Liquid Oxygen alarms; tie-in to junction box in sub-basement
- Central Vacuum Alarms; tie-in to alarm switches in sub-basement
- Medical Air Alarms; tie-in to alarm switches in sub-basement
- BW13; Nitrous Oxide manifold alarm
- BW14; Oxygen high, low-pressure alarm switches

## 3W40 – Nitrogen & Carbon Dioxide Manifolds

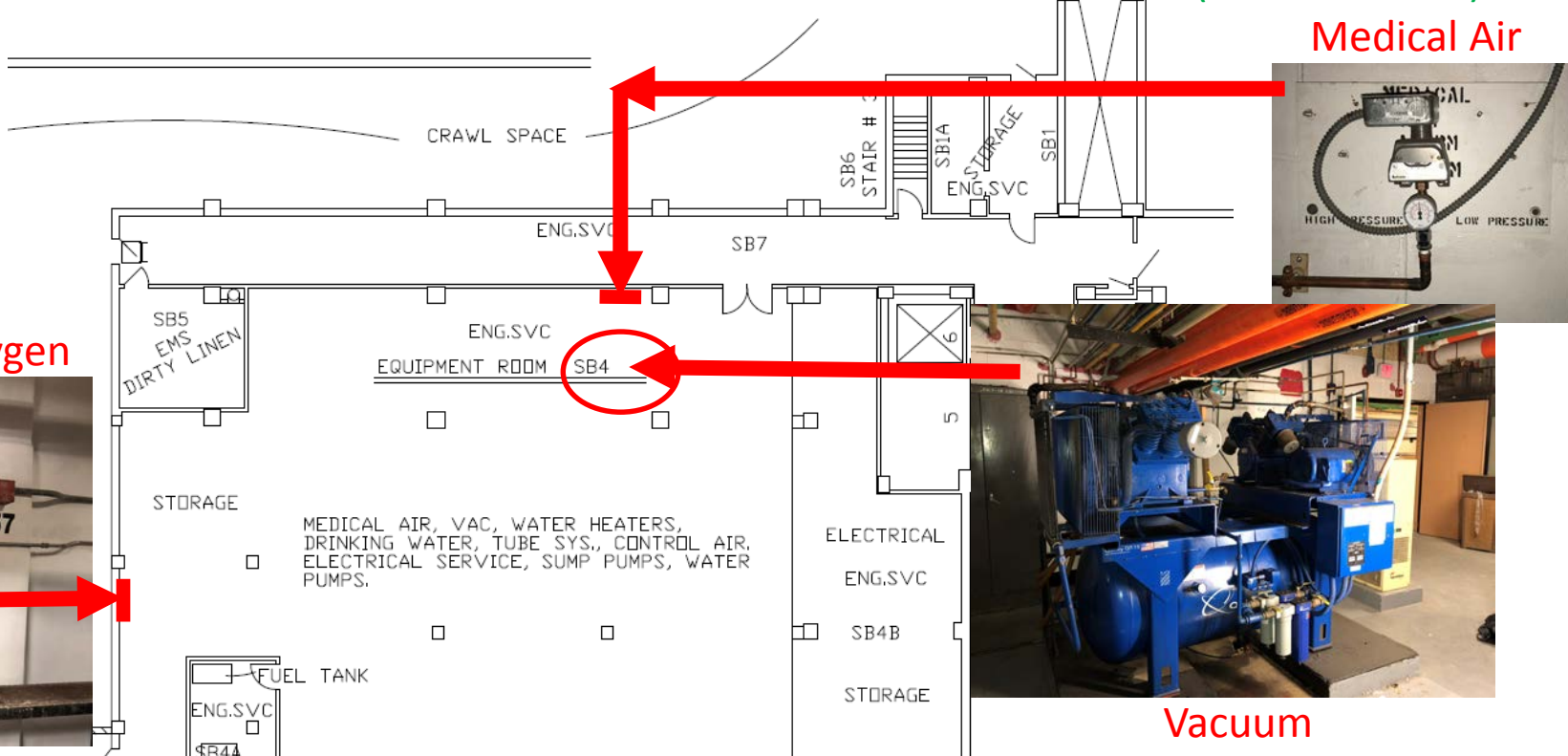
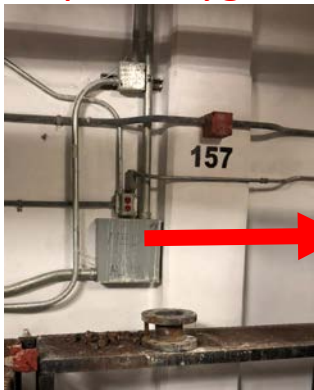




# PROJECT 667-18-114 CORRECT MEDICAL GAS & VACUUM DISCREPANCIES (Sketch 9 of 11)

## **TASK 3:**

Liquid Oxygen



Medical Air

Vacuum

## **TASK 3:**

The contractor shall provide all materials and labor to install new, replacement medical gas/vacuum master alarm panels in 1W25B (Current PBX), the warehouse (BE21) and the Boiler Plant (Bld. 3, room 6). The contractor shall run wiring to each of these master alarm panel locations and to room 1E75 (Future PBX location) from each of the following medical gas/vacuum manifolds and other monitored points IAW NFPA 99.

- 3W40A; Nitrogen manifold alarms
- 3W40A; Carbon Dioxide manifold alarms
- Liquid Oxygen alarms; tie-in to junction box in sub-basement
- Central Vacuum Alarms; tie-in to alarm switches in sub-basement
- Medical Air Alarms; tie-in to alarm switches in sub-basement
- BW13; Nitrous Oxide manifold alarm
- BW14; Oxygen high, low-pressure alarm switches



