

REC SOLAR

REC SOLAR  
810 FIERO LANE, SUITE 200  
SAN LUIS OBISPO, CA 93401  
PH (805) 477-3970  
FX (805) 540-6040  
(844) REC SOLAR

THE INFORMATION IN THIS DRAWING IS CONFIDENTIAL AND PROPRIETARY. ANY REPRODUCTION, DISCLOSURE, OR USE OF THIS RECORD IS PROHIBITED WITHOUT THE WRITTEN CONSENT OF REC SOLAR COMMERCIAL CORPORATION.

DATE	11/14/2016
PROJECT NUMBER	VALLV-14580-EPC
PROJECT MANAGER	BOB FISHER
PROJECT ENGINEER	JESSICA KENDRICK
ASSOCIATE ENGINEER	ZORAN IVANCEVIC
CHECKED BY	--

CLIENT

OFFICE OF  
CONSTRUCTION AND  
FACILITIES  
MANAGEMENT

Department of  
Veterans Affairs

CONTRACT NUMBER	VA701-14-C-0045	
CLIENT CONTACT	SEAN KAMINSKI	
CONTRACTING OFFICER (CO)	DREW DOWNEN	
REPRESENTATIVE	SCOTT ELIAS	
SPECIALIST (CS)		
REV	DATE	DESCRIPTION
14		RECORD SET
13		RECORD SET
12	11/14/16	ADD SWB-5 TO XMF-4
11	05/25/16	2ND NV ENERGY COMMENT
10	3/04/16	RELOCATE XMF-3
9	02/24/16	NV ENERGY COMMENTS
8	1/26/16	STRTU SWAP
7	8/25/15	100% SET
6	05/29/15	

PROJECT

NORTH LAS VEGAS SOLAR PV PROJECT

6900 NORTH PECOS RD  
NORTH LAS VEGAS, NV 89086

RECORD SET

SHEET TITLE

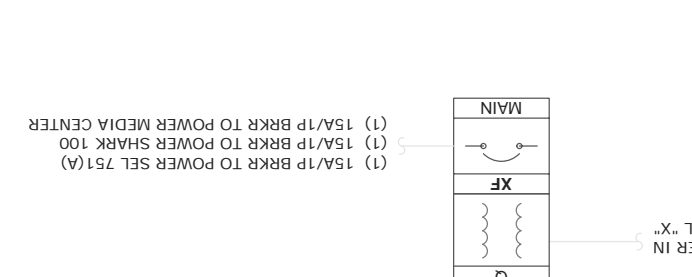
SHEET NUMBER

PV801

PROTECTION ELEMENTS - SEL 751A

58.4 Hz @ 5.0 seconds  
57.0 Hz @ 10 cycles  
57.6 Hz @ 5.0 seconds  
61.7 Hz @ 10 cycles  
27 (under voltage) element:  
80% of nominal @ 0.8 seconds  
Interlock with 52A to avoid a standing trip  
59 (overvoltage) element:  
110% of nominal @ 0.8 sec  
Close interlock:  
PV Site: HOT NV Energy/DEAD PO (Point of Interconnection)  
With:  
HOT above 90% of nominal  
DEAD below 20%

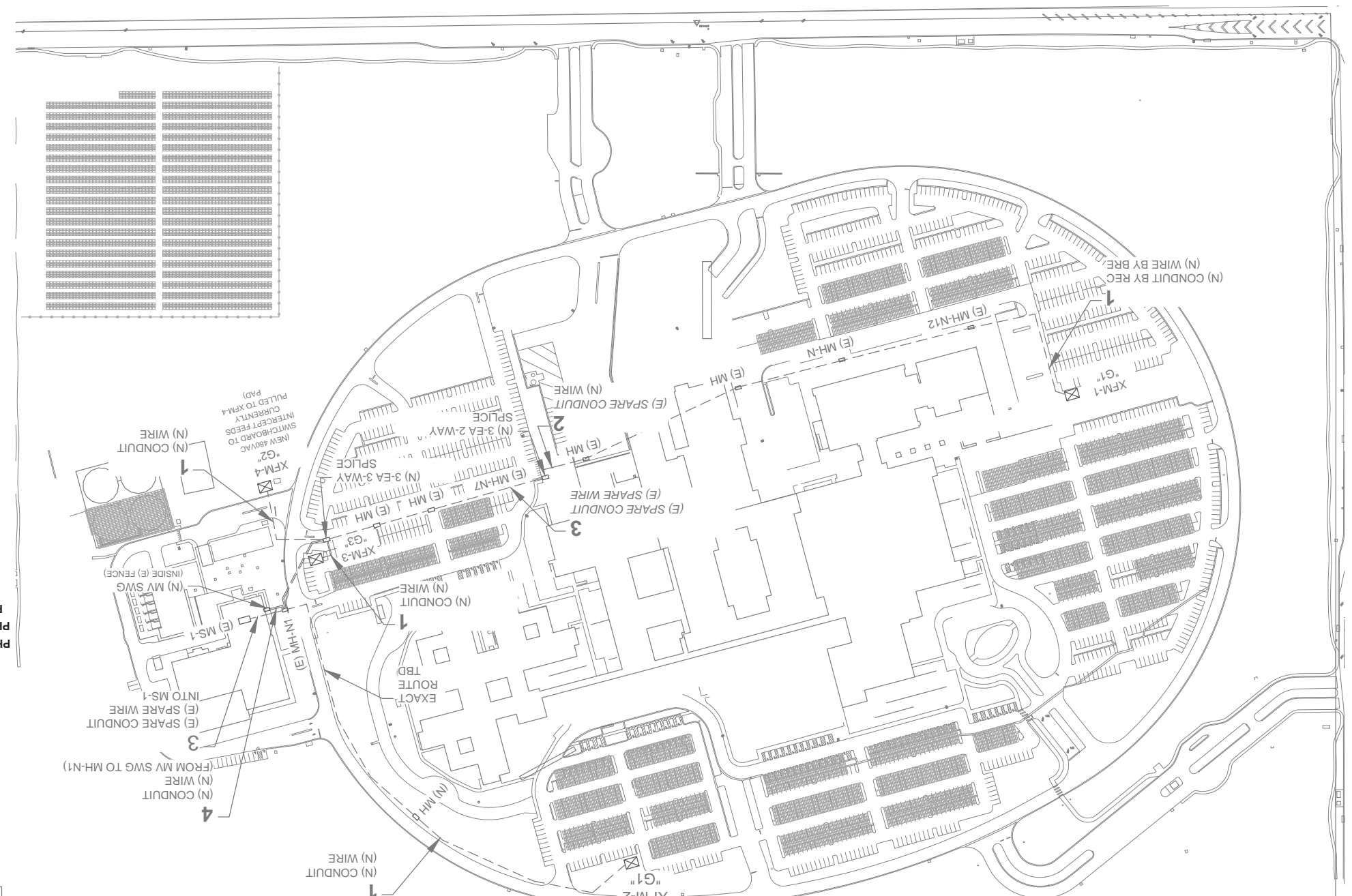
INSTRUMENT POWER



EXISTING FACILITY SERVICE

\*\* SEE SHEET PV801A FOR  
EXISTING FACILITY SERVICE \*\*

MEDIUM VOLTAGE SITE DISTRIBUTION



KEY MAP

NOTE:  
FOR OVERALL TRENCH & BORE ROUTE  
SEE SHEET PV300

ELECTRICAL SINGLE LINE - MEDIUM VOLTAGE

