

CAP THE GAS LINE AT
DEMOLISHED "GAS
METER HOUSE" LOCATION

APPROXIMATE TIE-IN LOCATION

APPROXIMATE LOCATION OF POTENTIAL PIPE
EXPOSURE SPANNING STORM WATER RUN-OFF

CONSTRUCTION NOTES:

1. CONTRACTOR SHALL VERIFY ALL DIMENSIONS AND LOCATE ALL EXISTING UTILITIES IN CONSTRUCTION AREA BEFORE CONSTRUCTION.
2. CONTRACTOR SHALL INSTALL NEW 6" POLY GAS LINE. THIS LINE SHALL TIE INTO EXISTING 6" POLY GAS LINE THAT FEEDS FACILITY AND CONNECT TO OKLAHOMA NATURAL GAS (ONG) METER THAT WILL BE LOCATED NEAR EXISTING REGULATORS.
3. ONG SHALL INSTALL NEW GAS METER AND COMPONENTS TO BE NEAR EXISTING REGULATORS. GAS METER AND REGULATORS SHALL BE SET ON MAINTENANCE CONCRETE PAD AND CONTRACTOR SHALL ENCLOSE REGULATORS AND GAS METER WITH CHAIN-LINK FENCE.
4. CONTRACTOR SHALL BURY NEW GAS LINE IN 36" DEEP AND 24" WIDE TRENCH. PIPE SHALL REST ON A MINIMUM OF 12" OF SAND AND BE COVERED WITH A MINIMUM OF 12" OF SAND.
5. CONTRACTOR WILL SPAN EXISTING STORM WATER RUN-OFF BY EXPOSING GAS LINE ABOVE GRADE. ANY AND ALL EXPOSED GAS LINE SHALL BE ENCASED IN 8" STEEL PIPE SLEEVE AND PROPERLY STABILIZED BY ENGINEERED SUPPORTS.
6. CONTRACTOR SHALL REPLACE ANY DISTURBED EROSION PROTECTION.
7. CONTRACTOR SHALL AIR PRESSURE TEST FOR 2 HOURS AT 40 PSI THE GAS LINE FROM THE SHUT-OFF VALVE AT BUILDING #6 TO THE SHUT-OFF VALVE AT THE BOILER BUILDING.
8. CONTRACTOR SHALL INSTALL A TRACER WIRE AND SAFETY TAPE ABOVE GAS LINE IN TRENCH.
9. CONTRACTOR SHALL RENOVATE EROSION CONTROLS ON INDICATED STORM WATER RUNOFF DITCHES.

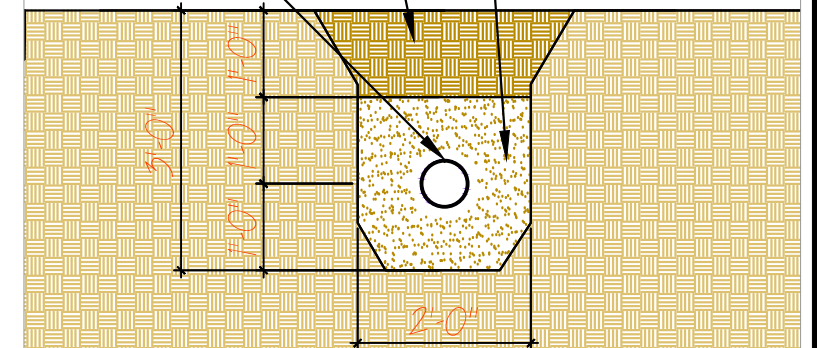
STORM WATER RUNOFF DITCHES REQUIRING EROSION CONTROLS

PROPOSED LOCATION OF NEW 6" GAS LINE

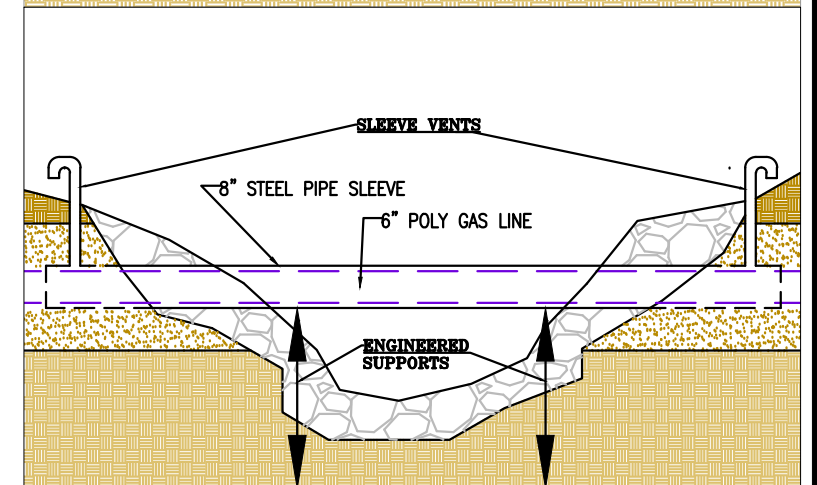
NEW GAS METER AND NEW GAS LINE CONNECTION

CAP THE GAS LINE AT
REGULATOR LOCATION

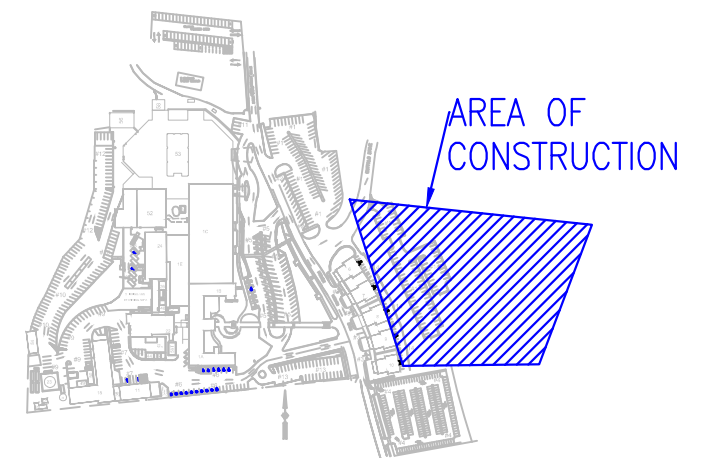
EARTH FILL WITH
EROSION PROTECTION
6" POLY GAS LINE
SAND PACK




TYP. TRENCH ELEVATION



TYP. EXPOSED GAS LINE ELEVATION



AREA OF
CONSTRUCTION

REVISIONS:	DATE	 <div>Dept. of Veterans Affairs Medical Center 1011 Honor Heights Drive Muskogee, OK. 74401</div>					APPROVED: Infectious Control Nurse-Lydia Snyder	APPROVED: Medical Center Director-Brian A. Hawkins	DRAWING TITLE		PROJECT TITLE	DATE	DEPARTMENT OF VETERANS AFFAIRS
							APPROVED: Safety Manager-Charles Horrier	APPROVED: Associate Director-Bryan Matthews	CONSTRUCTION PLAN		MAIN GAS LINE	AUG. 6, 2011	
							APPROVED: President A.F.G.E. 2250-Jeff Cowan	APPROVED: Chief of Staff-Karen H. Gribbin	PROJECT NO. 623-12-108		CONTRACT NO.	SCALE NTS	
								APPROVED: Chief Engineering Service-Jordan W. Bonware	BUILDING NO.		APPROVED FILE NAME	DRAWING NO. S-2	
									LOCATION		JACK C. MONTGOMERY VA MEDICAL CENTER	DWG.2 OF 2	