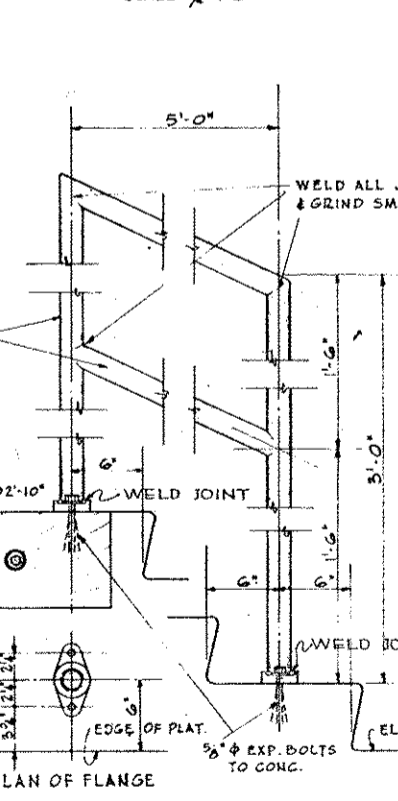
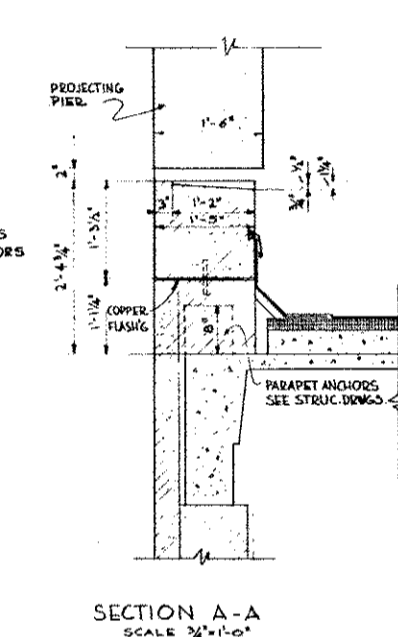
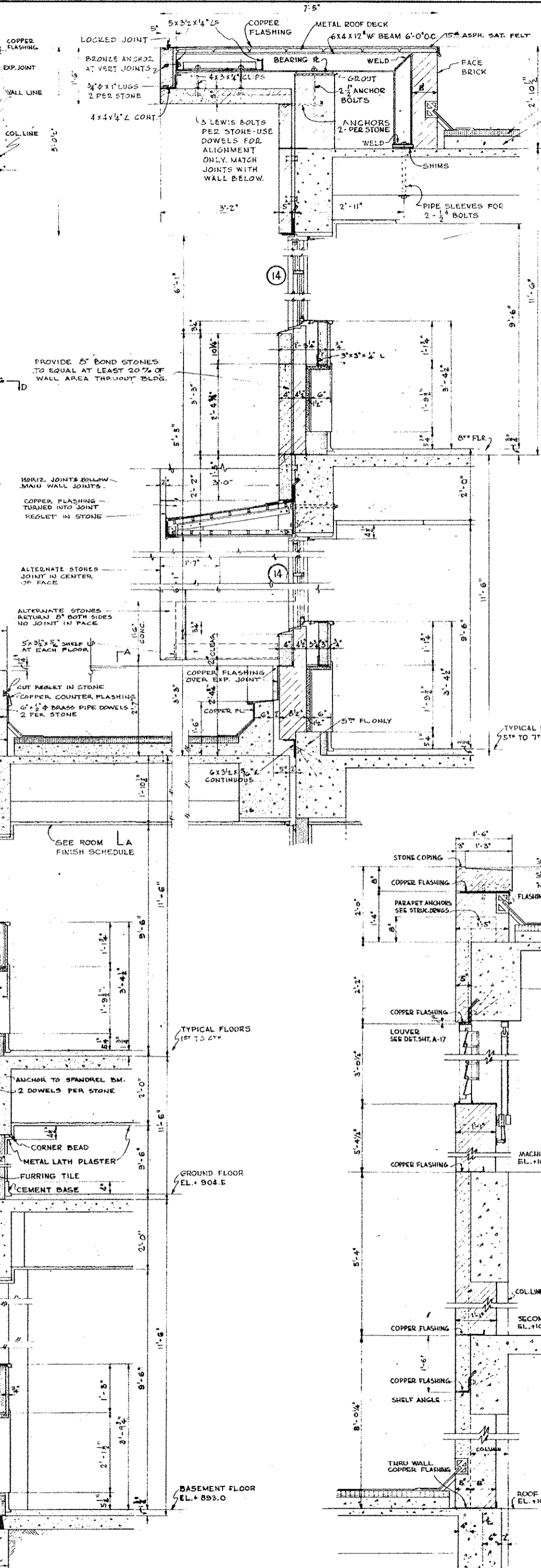
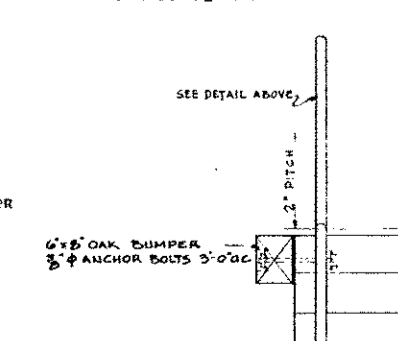


DETAILS OF EXPANSION JOINT AT PARAPET



DETAIL OF PIPE RAILING
SEE SEC. 8-B THIS SH. FOR LOCATION
SCALE: 1/2\"/>



NOTE:
PROVIDE ANCHORS & CRAMPS IN
ACCORDANCE WITH SPECIFICATIONS SO
THAT EACH STONE IS ANCHORED TO
BACKING WITH AT LEAST 2 ANCHORS.
ALL COPINGS TO HAVE 2 DOWELS PER
STONE INTO PARAPET WALLS.

