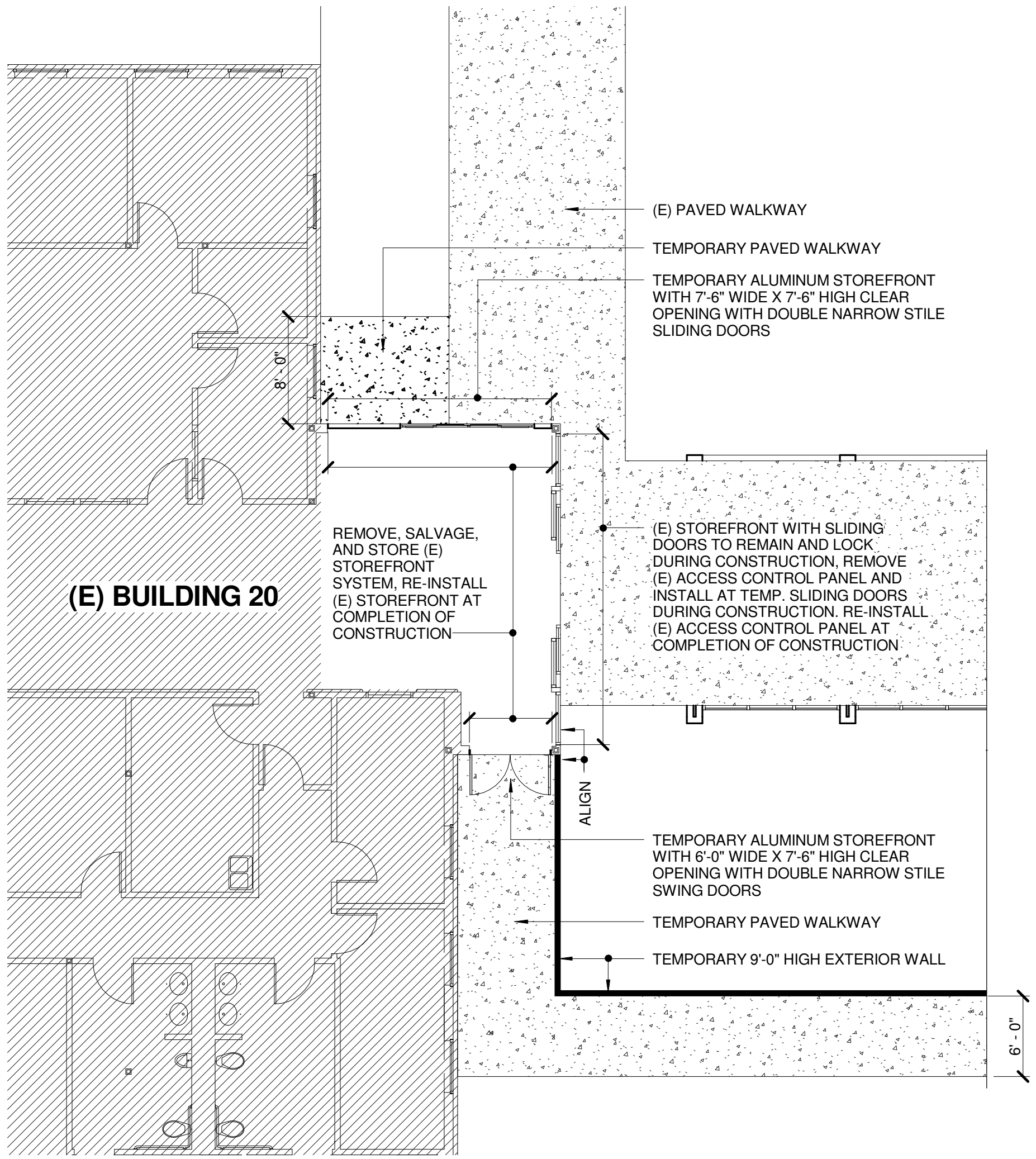
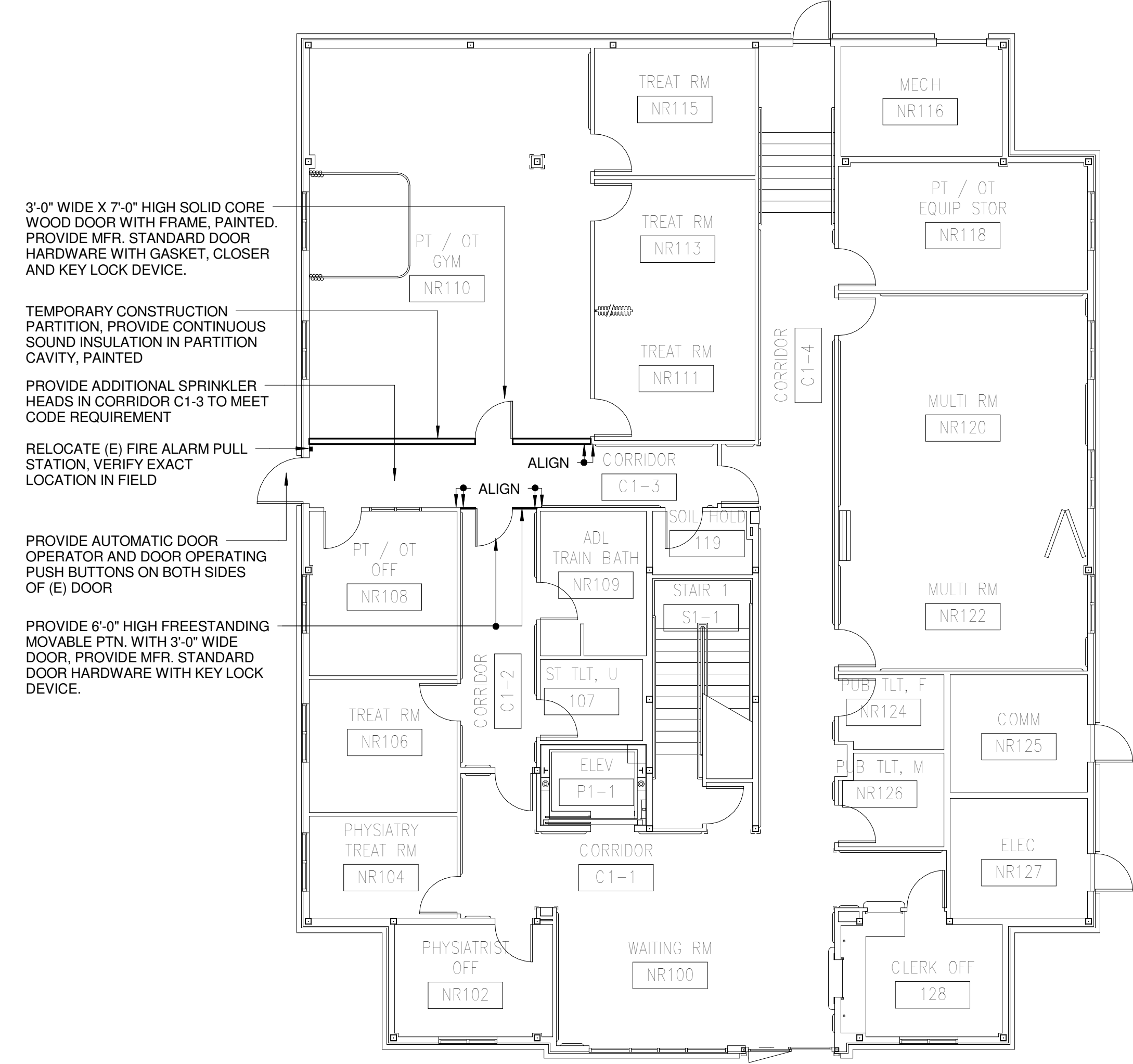


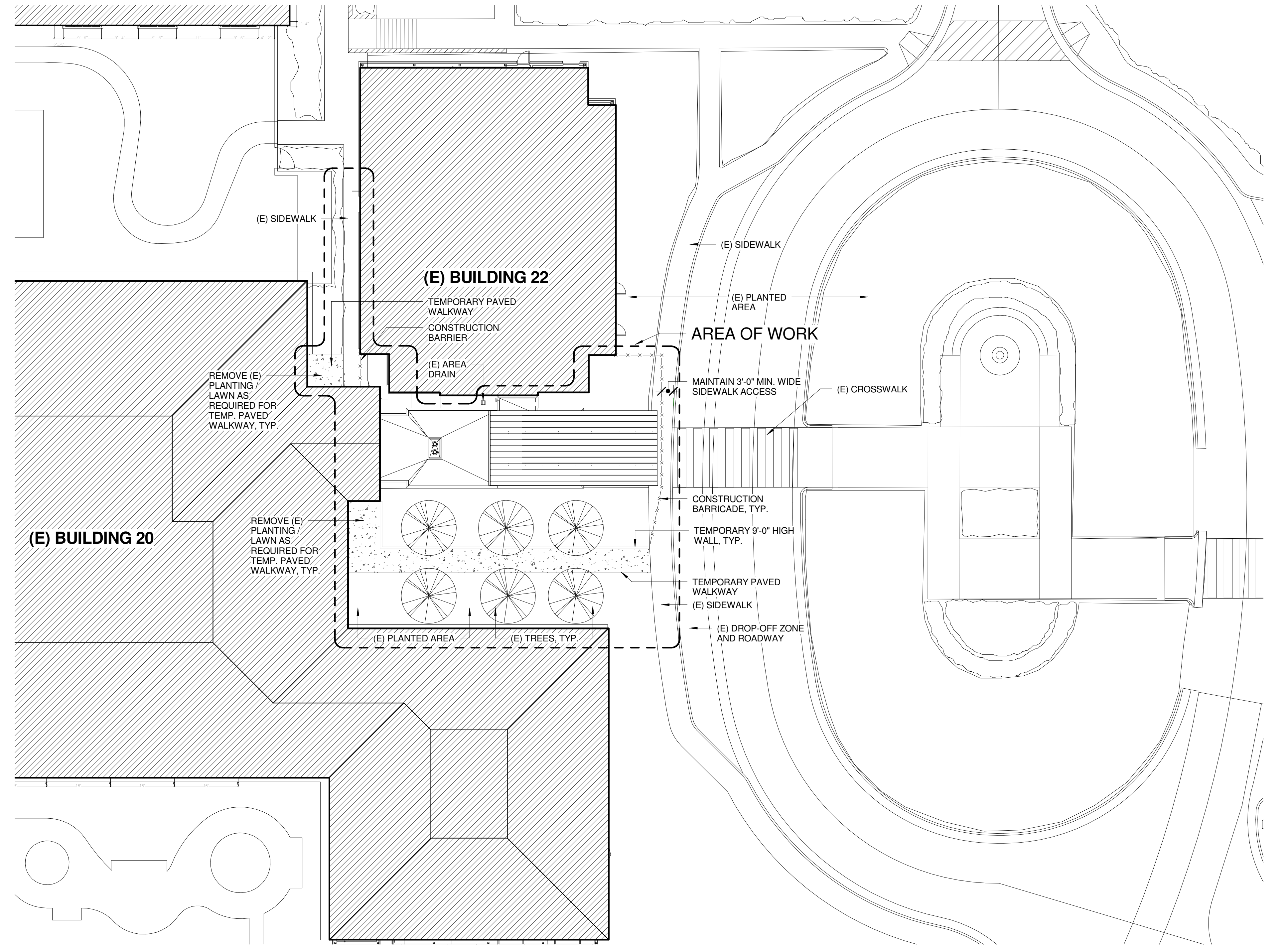
three inches = one foot
one and one half inches = one foot
one inch = one foot
three quarters inch = one foot
one half inch = one foot
three eighths inch = one foot
one quarter inch = one foot
one eighth inch = one foot



6 BLDG. 20 TEMPORARY ACCESS PLAN
1/8" = 1'-0"



8 BLDG. 22 TEMPORARY ACCESS PLAN
1/8" = 1'-0"



12 TEMPORARY ACCESS ROAD
1/16" = 1'-0"

NOTES

- DO NOT PROCEED WITH DEMOLITION OF NEW CONSTRUCTION PRIOR TO THE INSTALLATION OF TEMPORARY ACCESS AND THE INSTALLATION OF CONSTRUCTION BARRIER. RELOCATE TEMPORARY ACCESS AND AS DIRECTED BY COTR AT NO ADDITIONAL COST TO THE GOVERNMENT.
- LOCATIONS AND DIMENSIONS FOR ALL EXISTING COLUMNS, CONCRETE PAVEMENT, HARDSCAPES, TREES AND LANDSCAPES ARE APPROXIMATE AND FOR REFERENCE ONLY. CONTRACTOR SHALL OBTAIN THESE LOCATIONS AND DIMENSIONS BY FIELD MEASUREMENT.
- ALL TEMPORARY PAVED WALKWAYS, PARTITIONS, ENTRANCES, ETC. SHOWN ARE FOR REFERENCE ONLY. CONTRACTOR SHALL VERIFY EXACT LOCATIONS OF THESE ITEMS IN FIELD AND PROVIDE NECESSARY ACCESS AS DIRECTED BY COTR PRIOR TO THE INSTALLATION OF ALL TEMPORARY ACCESS ITEMS.
- WHERE TEMPORARY PAVED WALKWAYS ARE SHOWN AND PROVIDED, REMOVE EXISTING PLANTINGS, LAWNS, ETC. AS REQUIRED FOR THE INSTALLATION OF THE TEMPORARY PAVED WALKWAYS. RESTORE ALL PLANTINGS AND LAWNS AFTER REMOVAL OF THE TEMPORARY PAVED WALKWAYS. RESTORATION WORK SHALL MATCH EXISTING PLANTINGS AND LAWN IN SPECIES, SIZES, ETC.
- REMOVE ALL TEMPORARY STRUCTURES AND ITEMS, STAGING AREA EQUIPMENTS, ETC. AS DIRECTED BY COTR AT COMPLETION OF CONSTRUCTION. REPAIR AND RESTORE ALL AREA INCLUDING BUILDING EXTERIOR, SITE IMPROVEMENT, PAVEMENTS, HARDSCAPE / LANDSCAPE, PLANTING AREA, ETC. TO THEIR ORIGINAL CONDITIONS. PATCH WORK SHALL MATCH EXISTING ADJACENT AREA IN CONSTRUCTION, TYPES, MATERIALS, COLORS, AND FINISHES.
- ALL EXTERIOR TEMPORARY PAVED WALKWAYS SHALL BE CONCRETE PAVEMENT WITH NON-SLIP FINISH, MINIMUM 2% SLOPE AWAY FROM THE ENTRANCES.
- PROTECT EXISTING BUILDINGS, SITE IMPROVEMENTS, PLANTINGS, TREES, ETC. DURING CONSTRUCTION. ANY DAMAGES TO EXISTING BUILDINGS, SITE IMPROVEMENTS, PLANTING, TREE, ETC. SHALL BE RESTORE TO ITS ORIGINAL CONDITION BY THE CONTRACTOR AT NO ADDITIONAL COST TO THE GOVERNMENT.
- PROVIDE CONTINUOUS EGRESS FROM ALL EXISTING BUILDINGS. CONTRACTOR TO COORDINATE WITH COTR AND VA SAFETY OFFICER.
- PROVIDE ALL NECESSARY DIRECTIONAL SIGNAGES FOR TEMPORARY ACCESS ROUTE GUIDANCE DURING CONSTRUCTION. DIRECTIONAL SIGNAGES TO BE DETERMINED BY COTR.
- PROVIDE EXIT SIGNS, SPRINKLER HEADS, AND OTHER CEILING ACCESSORIES PER CODE REQUIREMENTS AND APPROVED SHOP DRAWINGS. ADJUST SPRINKLER HEAD LOCATIONS TO CLEAR OTHER CEILING FIXTURES AND ELEMENTS AS REQUIRED. PROVIDE ADDITIONAL SPRINKLER HEADS AS REQUIRED.
- PROVIDE SEISMIC BRACING AS REQUIRED FOR TEMPORARY ACCESS CONSTRUCTION.
- EXISTING STOREFRONT SYSTEMS AT BUILDING 20 TO BE REMOVED DURING CONSTRUCTION SHALL BE SALVAGED, PROTECTED, AND STORED AT A LOCATION DIRECTED BY COTR. AT THE COMPLETION OF CONSTRUCTION AND AT REMOVAL OF THE TEMPORARY ELEMENTS, RE-INSTALL EXISTING STOREFRONT SYSTEMS AT BUILDING 20 TO RESTORE AND MATCH EXISTING CONDITIONS. INSTALLATION OF THE EXISTING STOREFRONT SYSTEM SHALL BE WEATHER AND WATER TIGHT. ANY DAMAGES TO THE EXISTING STOREFRONT SYSTEMS SHALL BE REPAIRED AND RESTORED BY THE CONTRACTOR TO ITS ORIGINAL CONDITIONS AT NO ADDITIONAL COST TO THE GOVERNMENT.
- AT THE TEMPORARY ALUMINUM STOREFRONT WITH DOUBLE SWING DOORS, PROVIDE NARROW STILE DOORS WITH BOTTOM RAIL AT A MINIMUM OF 12-INCH HIGH. SWING DOORS SHALL EQUIP WITH LOCK FUNCTION, AUTOMATIC ACCESS CONTROL SYSTEM, WONDER GUARD SYSTEM, PANIC EXIT DEVICES.
- AT THE TEMPORARY ALUMINUM STOREFRONT WITH DOUBLE SLIDING DOORS, PROVIDE NARROW STILE. BREAKAWAY DOORS WITH BOTTOM RAIL AT A MINIMUM OF 12-INCH HIGH. SLIDING DOORS SHALL EQUIP WITH LOCK FUNCTION, AUTOMATIC ACCESS CONTROL SYSTEM, WONDER GUARD SYSTEM, PANIC EXIT DEVICES.

CONSTRUCTION DOCUMENTS BID SET	06.10.2011
Revisions:	Date

CONSULTANTS:		
STRUCTURAL E&A ENGINEERS, 20505 E. VALLEY BLVD, SUITE 110 WALNUT, CA 91789-2705 TEL: (909) 598-8045 FAX: (909) 598-8585	MECHANICAL & PLUMBING SJ ENGINEERS 300 FRANK OGAWA PLAZA, SUITE 308, OAKLAND, CA 94612 TEL: (510) 832-1505 FAX: (510) 832-1507	ELECTRICAL FWA INC. 330 FRANKLIN STREET, OAKLAND, CA 94612 TEL: (510) 763-7475 FAX: (510) 763-7033

ARCHITECT/ENGINEERS:

MEI
architecture + interiors

239 9TH STREET, Suite 201
SAN FRANCISCO, CA 94103
T: (415) 882-7376
F: (415) 882-7339
www.meiarchitects.com

SEAL: MEI-MECHANICAL ENGINEER, C-29350, 11-30-14, RENEWAL DATE, STATE OF CALIFORNIA

Drawing Title
TEMPORARY ACCESS ROAD AND PLANS

Approved: Project Director

Project Title ENTRANCE VESTIBULES AND COVERED WALKWAY AT BLDGS. 20 AND 22			Project Number 612-10-066
Location VANCHCS - MARTINEZ			Building Number BLDGS. 20 & 22
Date JUNE 10, 2011	Checked MMC	Drawn CL	Drawing Number G0-4

Office of Facilities Management
Department of Veterans Affairs