



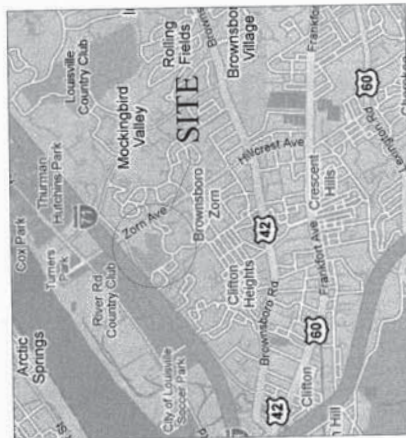
# Department of Veterans Affairs

**ROBLEY REX VA MEDICAL CENTER**  
**800 ZORN AVENUE**  
**LOUISVILLE, KY 40206**  
**PROJECT #603-16-602**  
**DENTAL GAS AND VACUUM**



Architecture | Engineering | Design-Build  
 200 Envoy Circle, Suite 201 Louisville KY 40299  
 www.paradigmusa.com

**(F) PROJECT LOCATION MAP**  
NEXT TO SCALE



**(G) PROJECT SITE MAP**  
NEXT TO SCALE



**DRAWING INDEX**

GENERAL	COVER SHEET
GD001	COVER SHEET
<b>PLUMBING ABBREVIATIONS, SYMBOLS, AND GENERAL NOTES</b>	
PD101	PLUMBING DEMOLITION PLAN - BASEMENT
PD102	PLUMBING DEMOLITION PLAN - FIRST FLOOR
PD103	PLUMBING DEMOLITION PLAN - SECOND FLOOR
PD104	PLUMBING DEMOLITION PLAN - TENTH FLOOR
PD105	PLUMBING DEMOLITION PLAN - THIRTEENTH FLOOR
PD106	PLUMBING DEMOLITION PLAN - TENTH FLOOR
PD107	PLUMBING DEMOLITION PLAN - TENTH FLOOR
PD108	PLUMBING DEMOLITION PLAN - TENTH FLOOR
PD109	PLUMBING DEMOLITION PLAN - TENTH FLOOR
PD110	PLUMBING DEMOLITION PLAN - TENTH FLOOR
PD111	PLUMBING DEMOLITION PLAN - TENTH FLOOR
PD112	PLUMBING DEMOLITION PLAN - TENTH FLOOR
PD113	PLUMBING DEMOLITION PLAN - TENTH FLOOR
PD114	PLUMBING DEMOLITION PLAN - TENTH FLOOR
PD115	PLUMBING DEMOLITION PLAN - TENTH FLOOR
PD116	PLUMBING DEMOLITION PLAN - TENTH FLOOR
PD117	PLUMBING DEMOLITION PLAN - TENTH FLOOR
PD118	PLUMBING DEMOLITION PLAN - TENTH FLOOR
PD119	PLUMBING DEMOLITION PLAN - TENTH FLOOR
PD120	PLUMBING DEMOLITION PLAN - TENTH FLOOR
PD121	PLUMBING DEMOLITION PLAN - TENTH FLOOR
PD122	PLUMBING DEMOLITION PLAN - TENTH FLOOR
PD123	PLUMBING DEMOLITION PLAN - TENTH FLOOR
PD124	PLUMBING DEMOLITION PLAN - TENTH FLOOR
PD125	PLUMBING DEMOLITION PLAN - TENTH FLOOR
PD126	PLUMBING DEMOLITION PLAN - TENTH FLOOR
PD127	PLUMBING DEMOLITION PLAN - TENTH FLOOR
PD128	PLUMBING DEMOLITION PLAN - TENTH FLOOR
PD129	PLUMBING DEMOLITION PLAN - TENTH FLOOR
PD130	PLUMBING DEMOLITION PLAN - TENTH FLOOR
PD131	PLUMBING DEMOLITION PLAN - TENTH FLOOR
PD132	PLUMBING DEMOLITION PLAN - TENTH FLOOR
PD133	PLUMBING DEMOLITION PLAN - TENTH FLOOR
PD134	PLUMBING DEMOLITION PLAN - TENTH FLOOR
PD135	PLUMBING DEMOLITION PLAN - TENTH FLOOR
PD136	PLUMBING DEMOLITION PLAN - TENTH FLOOR
PD137	PLUMBING DEMOLITION PLAN - TENTH FLOOR
PD138	PLUMBING DEMOLITION PLAN - TENTH FLOOR
PD139	PLUMBING DEMOLITION PLAN - TENTH FLOOR
PD140	PLUMBING DEMOLITION PLAN - TENTH FLOOR
PD141	PLUMBING DEMOLITION PLAN - TENTH FLOOR
PD142	PLUMBING DEMOLITION PLAN - TENTH FLOOR
PD143	PLUMBING DEMOLITION PLAN - TENTH FLOOR
PD144	PLUMBING DEMOLITION PLAN - TENTH FLOOR
PD145	PLUMBING DEMOLITION PLAN - TENTH FLOOR
PD146	PLUMBING DEMOLITION PLAN - TENTH FLOOR
PD147	PLUMBING DEMOLITION PLAN - TENTH FLOOR
PD148	PLUMBING DEMOLITION PLAN - TENTH FLOOR
PD149	PLUMBING DEMOLITION PLAN - TENTH FLOOR
PD150	PLUMBING DEMOLITION PLAN - TENTH FLOOR
PD151	PLUMBING DEMOLITION PLAN - TENTH FLOOR
PD152	PLUMBING DEMOLITION PLAN - TENTH FLOOR
PD153	PLUMBING DEMOLITION PLAN - TENTH FLOOR
PD154	PLUMBING DEMOLITION PLAN - TENTH FLOOR
PD155	PLUMBING DEMOLITION PLAN - TENTH FLOOR
PD156	PLUMBING DEMOLITION PLAN - TENTH FLOOR
PD157	PLUMBING DEMOLITION PLAN - TENTH FLOOR
PD158	PLUMBING DEMOLITION PLAN - TENTH FLOOR
PD159	PLUMBING DEMOLITION PLAN - TENTH FLOOR
PD160	PLUMBING DEMOLITION PLAN - TENTH FLOOR
PD161	PLUMBING DEMOLITION PLAN - TENTH FLOOR
PD162	PLUMBING DEMOLITION PLAN - TENTH FLOOR
PD163	PLUMBING DEMOLITION PLAN - TENTH FLOOR
PD164	PLUMBING DEMOLITION PLAN - TENTH FLOOR
PD165	PLUMBING DEMOLITION PLAN - TENTH FLOOR
PD166	PLUMBING DEMOLITION PLAN - TENTH FLOOR
PD167	PLUMBING DEMOLITION PLAN - TENTH FLOOR
PD168	PLUMBING DEMOLITION PLAN - TENTH FLOOR
PD169	PLUMBING DEMOLITION PLAN - TENTH FLOOR
PD170	PLUMBING DEMOLITION PLAN - TENTH FLOOR
PD171	PLUMBING DEMOLITION PLAN - TENTH FLOOR
PD172	PLUMBING DEMOLITION PLAN - TENTH FLOOR
PD173	PLUMBING DEMOLITION PLAN - TENTH FLOOR
PD174	PLUMBING DEMOLITION PLAN - TENTH FLOOR
PD175	PLUMBING DEMOLITION PLAN - TENTH FLOOR
PD176	PLUMBING DEMOLITION PLAN - TENTH FLOOR
PD177	PLUMBING DEMOLITION PLAN - TENTH FLOOR
PD178	PLUMBING DEMOLITION PLAN - TENTH FLOOR
PD179	PLUMBING DEMOLITION PLAN - TENTH FLOOR
PD180	PLUMBING DEMOLITION PLAN - TENTH FLOOR
PD181	PLUMBING DEMOLITION PLAN - TENTH FLOOR
PD182	PLUMBING DEMOLITION PLAN - TENTH FLOOR
PD183	PLUMBING DEMOLITION PLAN - TENTH FLOOR
PD184	PLUMBING DEMOLITION PLAN - TENTH FLOOR
PD185	PLUMBING DEMOLITION PLAN - TENTH FLOOR
PD186	PLUMBING DEMOLITION PLAN - TENTH FLOOR
PD187	PLUMBING DEMOLITION PLAN - TENTH FLOOR
PD188	PLUMBING DEMOLITION PLAN - TENTH FLOOR
PD189	PLUMBING DEMOLITION PLAN - TENTH FLOOR
PD190	PLUMBING DEMOLITION PLAN - TENTH FLOOR
PD191	PLUMBING DEMOLITION PLAN - TENTH FLOOR
PD192	PLUMBING DEMOLITION PLAN - TENTH FLOOR
PD193	PLUMBING DEMOLITION PLAN - TENTH FLOOR
PD194	PLUMBING DEMOLITION PLAN - TENTH FLOOR
PD195	PLUMBING DEMOLITION PLAN - TENTH FLOOR
PD196	PLUMBING DEMOLITION PLAN - TENTH FLOOR
PD197	PLUMBING DEMOLITION PLAN - TENTH FLOOR
PD198	PLUMBING DEMOLITION PLAN - TENTH FLOOR
PD199	PLUMBING DEMOLITION PLAN - TENTH FLOOR
PD200	PLUMBING DEMOLITION PLAN - TENTH FLOOR

<p><b>CONSULTANTS</b></p> <p><b>DAE</b>          DESIGN-AIRE ENGINEERING, INC.          200 Envoy Circle, Suite 201          Louisville, KY 40299          Mechanical, Electrical, and Energy Engineering</p>	<p><b>ARCHITECT/ENGINEERS</b></p> <p><b>paradigm</b>          Architecture   Engineering   Design-Build          200 Envoy Circle, Suite 201 Louisville, KY 40299 - Ph: 502.251.8111 - www.paradigmusa.com</p>		<p><b>COVER SHEET</b></p> <p>Approved Project Director</p>	<p><b>Project No</b></p> <p>DENTAL GAS AND VACUUM</p> <p>Location: ROBLEY REX VA MEDICAL CENTER 800 ZORN AVENUE, LOUISVILLE, KY 40206</p> <p>Date: 09-26-2018</p>	<p><b>Project Number</b></p> <p>603-16-602</p> <p><b>Sheet Number</b></p> <p>1</p> <p><b>Drawing Number</b></p> <p>GD001</p>	<p>Office of Construction and Facilities Management</p> <p>Department of Veterans Affairs</p>

VA FORM 08-4231



**FIELD VERIFY**

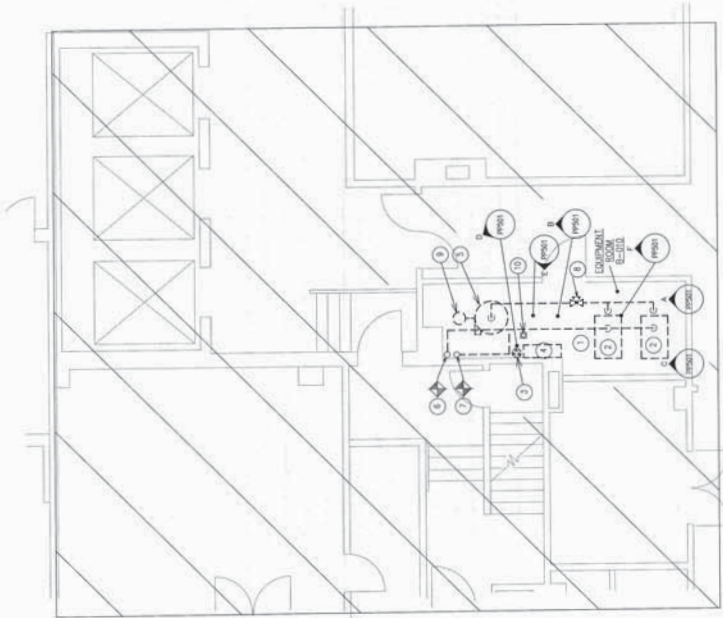
FIELD VERIFY ALL DIMENSIONS AND LOCATIONS. DIMENSIONS WAS OBTAINED FROM SIMILAR BUILDING DRAWINGS AND SURVEY FIELD OBSERVATION. HOWEVER, ACTUAL DIMENSIONS MAY VARY FROM THE DRAWINGS. CERTAIN INFORMATION, SUCH AS THE DEPTH OF THE EXISTING CONCRETE SLAB, THE EXACT LOCATION, DEPTH, SIZE, ETC. PRIOR TO STARTING CONSTRUCTION ANY CONFLICT BETWEEN THE EXISTING AND PROPOSED WORK SHALL BE REPORTED IMMEDIATELY TO THE ARCHITECT FOR VERIFICATION AND/OR CORRECTION.

**GENERAL NOTES**

- A. EVERYTHING SHOWN IS EXISTING TO REMAIN UNLESS NOTED OTHERWISE.
- B. ALL PIPING SHOWN IS LOCATED ABOVE FINISHED FLOOR UNLESS NOTED OTHERWISE.
- C. CONTRACT DOCUMENTS CONSIST OF BOTH THE PROJECT MANUAL AND DRAWINGS. ALL WORK SHALL BE PERFORMED TO CONFORM WITH THE SPECIFICATIONS AND NOTES ON OTHERS MUST BE EXECUTED THE SAME AS IF SHOWN ON BOTH.
- D. THE CONTRACTOR SHALL INCLUDE IN BID PROPOSAL ALL COSTS REQUIRED TO COMPLETELY AND PROPERLY INSTALL ALL WORK SHOWN AND TO VERIFY AND CORRECT ALL EXISTING WORK. THE CONTRACTOR SHALL BE RESPONSIBLE FOR VERIFYING THE LOCATION OF ALL OTHER TRACES PRIOR TO SUBMITTING A BID PROPOSAL.

**PLAN NOTES**

- 1. REMOVE EXISTING VACUUM PRODUCERS, WET SEPARATOR, DOWN PUMP, CONTROL PANEL AND RELATED PIPING.
- 2. REMOVE SPENCER #2410992 TURBINE VACUUM PRODUCER.
- 3. REMOVE DRAIN DOWN PUMP 1/2HP, 115/230V 1 PHASE, 11.3 GPM AT 10' TDH, AND DISCHARGE PIPE TO FLOOR DRAIN, ONE PUMP TO OWNER COORDINATE WITH COR.
- 4. REMOVE CONTROL PANEL, COORDINATE WITH E.C.
- 5. REMOVE 200 GALLON WET SEPARATOR.
- 6. REMOVE 4" COPPER EXHAUST TO THIS POINT.
- 7. REMOVE 3" PVC VACUUM LINE TO THIS POINT.
- 8. REMOVE ELECTRONIC MODULATING BLEED CONTROL ASSEMBLY.
- 9. DISCONNECT EXISTING WATER LINE TO SYSTEM AS REQUIRED. FIELD VERIFY LOCATION OF EXISTING LINE, CAP PIPE.
- 10. EXISTING FLOOR DRAIN.



E4 PARTIAL FLOOR PLAN  
R-1110



KEY PLAN - BASEMENT  
N

BD DOCUMENTS FOR CONSTRUCTION

PROJECT NO: R-1110	PROJECT TITLE: PIPING DEMOLITION PLAN BASEMENT	PROJECT NO: 600-R-602	OFFICE OF: Construction and Facilities Management
	APPROVED PROJECT DIRECTOR: [Signature]	BIDDING NUMBER: 1	
		DRAWING NUMBER: PD101	
ARCHITECT/ENGINEERS: <b>paradigm</b> Architecture   Engineering   Design-Build 200 First Drive, 20th Floor, 20th Floor, 20th Floor	CONSULTANTS: <b>DAE</b> DESIGN-AIR ENGINEERING, INC. 200 First Drive, 20th Floor, 20th Floor, 20th Floor	DATE: 09-2-2008	DESIGNED BY: [Name]
		CHECKED BY: [Name]	DATE: [Date]
		DATE: [Date]	

VA FORM 88-1231

**FIELD VERIFY**

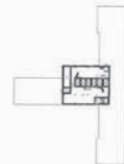
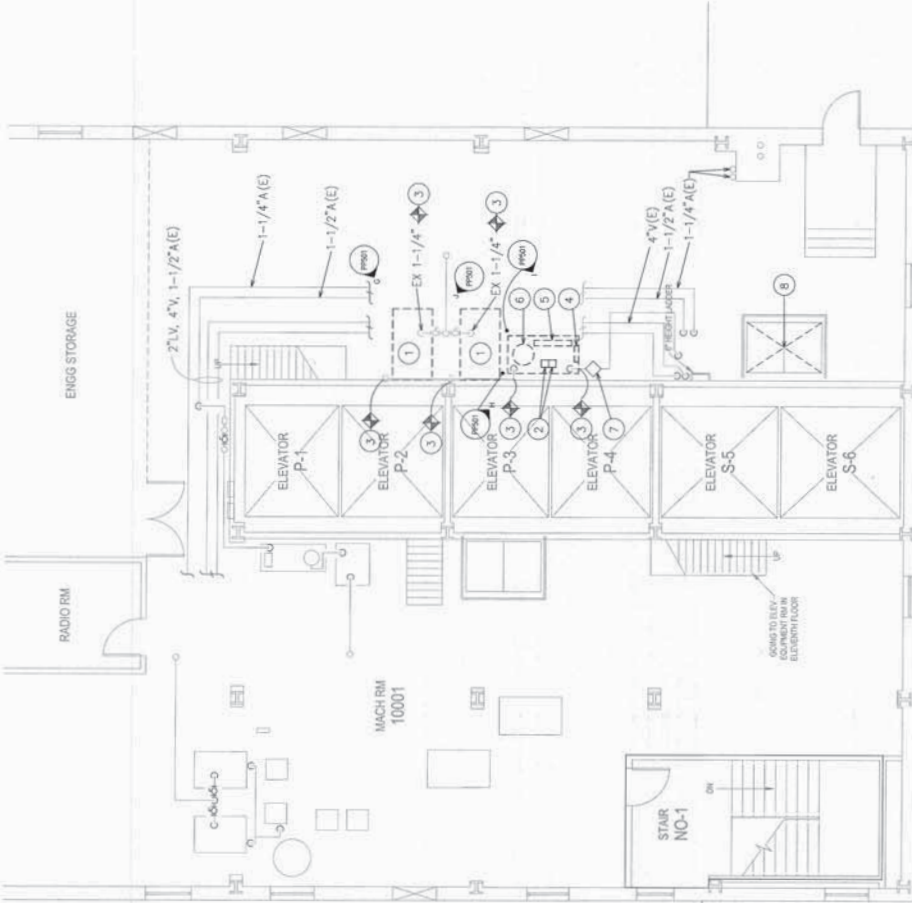
EXISTING ELECTRICAL EQUIPMENT WAS OBTAINED FROM SIMILAR BUILDING DRAWINGS AND VISUAL INSPECTION. VISUAL INSPECTION OF THE BUILDING AND AS-BUILT DRAWINGS WERE NOT AVAILABLE. CERTAIN INFORMATION CONCERNING THE LOCATION OF THE EXISTING ELECTRICAL WORK MUST BE OBTAINED FROM VISUAL INSPECTION OF THE BUILDING. THE DEPTH, SIZE, ETC. PRIOR TO STARTING CONSTRUCTION ANY CORRELATION BETWEEN THESE PLANS AND THE ACTUAL CONDITIONS SHALL BE OBTAINED PRIOR TO THE ARCHITECT FOR VERIFICATION AND/OR CORRECTION.

**GENERAL NOTES**

- A. EVERYTHING SHOWN IS EXISTING TO REMAIN UNLESS NOTED OTHERWISE.
- B. ALL PIPING SHOWN IS LOCATED ABOVE FINISHED FLOOR UNLESS NOTED OTHERWISE.
- C. CONTRACT DOCUMENTS CONSIST OF BOTH THE PROJECT MANUAL AND DRAWINGS, AND BOTH ARE INTENDED TO BE COMPLEMENTARY AND NOT CONFLICTORY. ANY CONFLICTS SHALL BE RESOLVED AS SHOWN ON BOTH.
- D. THE CONTRACTOR SHALL INCLUDE IN BID PROPOSAL ALL COSTS REQUIRED TO COMPLETE AND PROPERLY INSTALL ALL WORK REQUIRED FOR THE PROJECT, AND SHALL EXAMINE THE SCOPE OF WORK OF OTHER TRADES PRIOR TO SUBMITTING A BID PROPOSAL.

**PLAN NOTES**

- 1. EXISTING DENTAL AIR COMPRESSOR MODULES TO BE REMOVED. PUMPS ARE TO BE GIVEN TO OWNER COORDINATE WITH COR.
- 2. EXISTING DENTAL AIR DRYER MODULES TO BE REMOVED AND RETURNED TO OWNER, COORDINATE WITH COR.
- 3. DISCONNECT AIR PIPING FROM COMPRESSOR MODULES AND REMOVE AIR COMPRESSOR(S) COMPLETE.
- 4. REMOVE EXISTING HANSSON SPX AIR DRYER. CAP ALL PIPES FROM DEMO.
- 5. EXISTING DENTAL AIR CONTROL PANEL TO BE REMOVED.
- 6. EXISTING VERTICAL TANK TO BE REMOVED.
- 7. EXISTING PRESSURE MONITORING SYSTEM TO REMAIN.
- 8. EXISTING VACUUM PUMPS TO BE REMOVED. DISCONNECT EXISTING PIPING AND MAKE AVAILABLE TO EXTEND CIRCUIT TO NEW PUMP(S). SEE PIPING SHEETS.



KEY PLAN - TENTH FLOOR

F2 PARTIAL FLOOR PLAN

<p>PROJECT NAME</p>		<p>ARCHITECT/ENGINEERS</p>		<p>CONSULTANTS</p>		<p>DATE</p>	
<p>PPING DEMOLITION PLAN TENTH FLOOR</p>		<p>paradigm Architecture   Engineering   Design-Build 200 King Court #201, Lincoln, NE 68502   Ph: 402.333.8111   www.paradigm.com</p>		<p>D&amp;E DESIGN-SIZE ENGINEERING, INC. 1000 N. 17TH ST., SUITE 200 LINCOLN, NE 68502 Mechanical, Electrical, and Energy Engineering</p>		<p>DATE</p>	
<p>Project Name</p>		<p>Project Number</p>		<p>Office of Construction and Facilities Management</p>		<p>DATE</p>	
<p>DENTAL GAS AND VACUUM</p>		<p>603-16-602</p>		<p>Office of Construction and Facilities Management</p>		<p>DATE</p>	
<p>Location: ROBLEY REY VA MEDICAL CENTER</p>		<p>Sheet Number</p>		<p>Office of Construction and Facilities Management</p>		<p>DATE</p>	
<p>1000 W. 16TH ST., LINCOLN, NE 68502</p>		<p>1</p>		<p>Office of Construction and Facilities Management</p>		<p>DATE</p>	
<p>Date: 09-29-2008</p>		<p>Drawing Number</p>		<p>Office of Construction and Facilities Management</p>		<p>DATE</p>	
<p>Approved Project Director</p>		<p>FD102</p>		<p>Office of Construction and Facilities Management</p>		<p>DATE</p>	
<p>Checked: DJ</p>		<p>Drawn: DJ</p>		<p>Office of Construction and Facilities Management</p>		<p>DATE</p>	
<p>Checked: DJ</p>		<p>Drawn: DJ</p>		<p>Office of Construction and Facilities Management</p>		<p>DATE</p>	

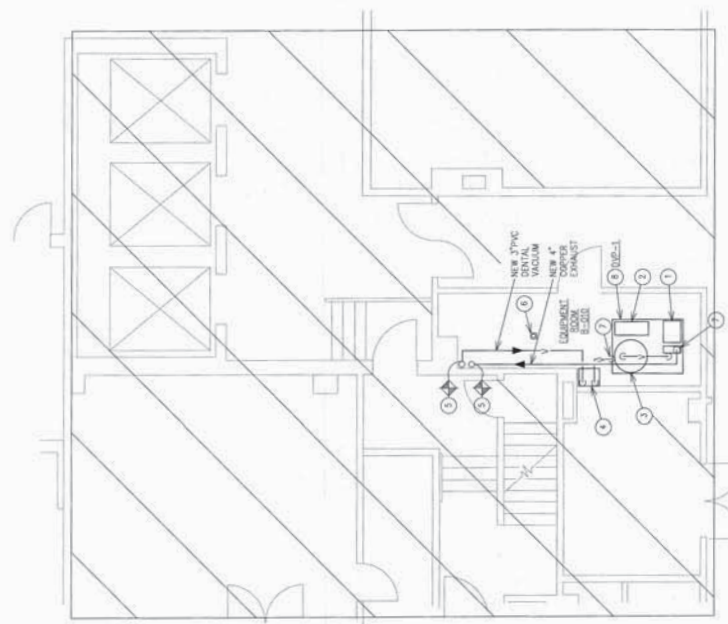
**FIELD VERIFY**  
 EXISTING ELECTRICAL EQUIPMENT WAS OBTAINED FROM SIMILAR BUILDING DRAWINGS AND CURSORY FIELD OBSERVATION. HOWEVER, ACTUAL LOCATION OF EQUIPMENT IS UNRELIABLE. THE CONTRACTOR SHALL CONDUCT A FIELD SURVEY TO VERIFY THE LOCATION OF THE EXISTING ELECTRICAL WORK. ANY DISCREPANCIES SHOULD BE REPORTED IMMEDIATELY TO THE ARCHITECT FOR VERIFICATION AND/OR CORRECTION.

**GENERAL NOTES**

- A. EXISTING WORK SHOWN IS EXISTING TO REMAIN UNLESS NOTED OTHERWISE.
- B. ALL WORK SHOWN IS LOCATED ABOVE FINISHED FLOOR UNLESS NOTED OTHERWISE.
- C. CONTRACT DOCUMENTS CONSIST OF BOTH THE PROJECT MANUAL AND DRAWINGS, AND BOTH ARE INTENDED TO BE COMPLEMENTARY -- ANYTHING APPEARING ON EITHER MUST BE EXECUTED THE SAME AS IF SHOWN ON BOTH.
- D. THE CONTRACTOR SHALL INCLUDE IN BID PROPOSAL ALL COSTS REQUIRED FOR THE PROJECT, AND SHALL EXAMINE THE SCOPE OF WORK OF OTHER TRADES PRIOR TO SUBMITTING A BID PROPOSAL.

**PLAN NOTES**

- 1. STACKED DENTAL VACUUM PUMPS.
- 2. CONTROL PANEL.
- 3. RECEIVER TANK. PIPE ALL DRAINS IN COPPER, NEAR WALL AND OVER 10 FLOOR DRINK.
- 4. NEW AMMAGAM SEPARATOR DAS-1, MOUNTED TO FLOOR.
- 5. EXISTING 4" COPPER AND 2-1/2" PPS RISERS UP TO CEILING OF 2ND FLOOR. RECONNECT EXISTING PIPING TO NEW AS REQUIRED.
- 6. EXISTING FLOOR DRAIN.
- 7. EXHAUST CONNECTION TO DVP-1 SYSTEM.
- 8. NEW MODULAR DENTAL VACUUM SYSTEM DVP-1.



**E4 PARTIAL FLOOR PLAN**



KEY PLAN - BASEMENT  
 N

<b>PROJECT #</b> 603-16-602 <b>Project Name</b> DENITAL GAS AND VACUUM <b>Location</b> ROBLEY VA MEDICAL CENTER <b>Date</b> 09-20-2018		<b>Office of Construction and Facilities Management</b> <b>Drawing Number</b> PPI01	
<b>ARCHITECT/ENGINEERS</b> <b>paradigm</b> Architecture   Engineering   Design-Build 200 One One Blvd., Lincoln VA 22081 - Ph: 502.333.8511 - www.paradigm.com		<b>CONSULTANTS</b> <b>DAE</b> <b>DESIGN-ARE ENGINEERING, INC.</b> 10000 Old Dominion Blvd., Suite 100 Norfolk, VA 23502 Mechanical, Electrical, and Energy Engineering	
<b>PROJECT #</b> 603-16-602 <b>Project Name</b> DENITAL GAS AND VACUUM <b>Location</b> ROBLEY VA MEDICAL CENTER <b>Date</b> 09-20-2018		<b>Office of Construction and Facilities Management</b> <b>Drawing Number</b> PPI01	
<b>ARCHITECT/ENGINEERS</b> <b>paradigm</b> Architecture   Engineering   Design-Build 200 One One Blvd., Lincoln VA 22081 - Ph: 502.333.8511 - www.paradigm.com		<b>CONSULTANTS</b> <b>DAE</b> <b>DESIGN-ARE ENGINEERING, INC.</b> 10000 Old Dominion Blvd., Suite 100 Norfolk, VA 23502 Mechanical, Electrical, and Energy Engineering	



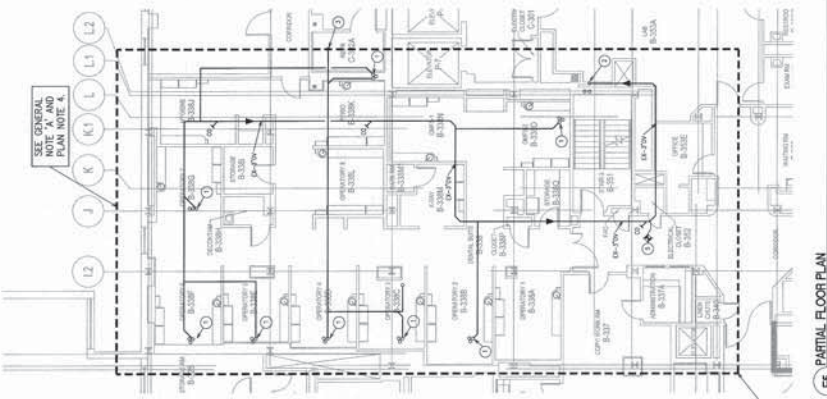


**FIELD VERIFY**

EXISTING ELECTRICAL EQUIPMENT WAS OBTAINED FROM SIMILAR BUILDING DRAWINGS AND CURSORY FIELD OBSERVATION. HOWEVER, ACTUAL "AS-BUILT" DRAWINGS WERE NOT AVAILABLE. CERTAIN INFORMATION MUST BE VERIFIED IN THE FIELD TO DETERMINE THE EXACT LOCATIONS, DEPTH, SIZE, ETC. PRIOR TO STARTING CONSTRUCTION. ANY CONFLICT REPORTED IMMEDIATELY TO THE ARCHITECT FOR VERIFICATION AND/OR CORRECTION.

**GENERAL NOTES**

- A. EVERYTHING SHOWN IS EXISTING TO REMAIN UNLESS NOTED OTHERWISE.
- B. ALL PIPING SHOWN IS LOCATED ABOVE FINISHED FLOOR UNLESS NOTED OTHERWISE.
- C. CONTRACT DOCUMENTS CONSIST OF BOTH THE PROJECT MANUAL AND THE SUPPLEMENTAL SPECIFICATIONS. ANYTHING APPEARING ON EITHER MUST BE EXERCISED THE SAME AS IF SHOWN ON BOTH.
- D. THE CONTRACTOR SHALL INCLUDE IN BID PROPOSAL ALL COSTS REQUIRED TO COMPLETELY AND PROPERLY INSTALL ALL WORK SHOWN AND TO OBTAIN ALL NECESSARY PERMITS AND INSURE ALL WORK OF OTHER TRADES PRIOR TO SUBMITTING A BID PROPOSAL.

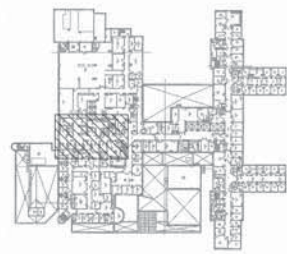


F5 PARTIAL FLOOR PLAN  
10/17/12

**SHEET INFORMATION**  
ALL VACUUM PIPING SHOWN IS LOCATED ABOVE FINISHED FLOOR UNLESS NOTED OTHERWISE. AND ABOVE 2ND FLOOR FINISHED CEILING.

**PLAN NOTES**

- 1. EXISTING 3/4" OD ORAL VACUUM 1/2" OXYGEN AND 1/2" DENTAL AIR LINE UP TO CHAIR ON THIRD FLOOR.
- 2. EXISTING PVC 2-1/2" OAL VACUUM LINE DOWN TO MECHANICAL COCKET IN BASEMENT.
- 3. EXISTING 3/4" OAL VACUUM LINE UP TO WALL OUTLET ON THIRD FLOOR.
- 4. CLEAN EXISTING VACUUM PIPING ALL THE WAY BACK DOWN TO VACUUM PUMPS IN BASEMENT.
- 5. INSTALL NEW 3" CLEANOUT IN TOP OF EXISTING 3" PVC LINE.



KEY PLAN - THIRD FLOOR  
WB

BD DOCUMENTS  
FOR CONSTRUCTION

PROJECT #6022	CONSULTANTS	ARCHITECT/ENGINEERS	 Architecture   Engineering   Design-Build 200 Drexel Drive, Suite 1201, Philadelphia, PA 19104 Tel: 215-626-1111   www.paradigmgroup.com	 D.M. Kline	Drawing Title PIPING PLAN - EXISTING THIRD FLOOR	Project Title DENTAL GAS AND VACUUM	Project Number 602-16-002	Office of Construction and Facilities Management
	Date 10/17/12	Approved Project Director 			Location ROBERT REY VA MEDICAL CENTER 80 FEDERAL TRAIL, LIBERTY, PA	Drawing Number PP102	Office DH	Designer BC

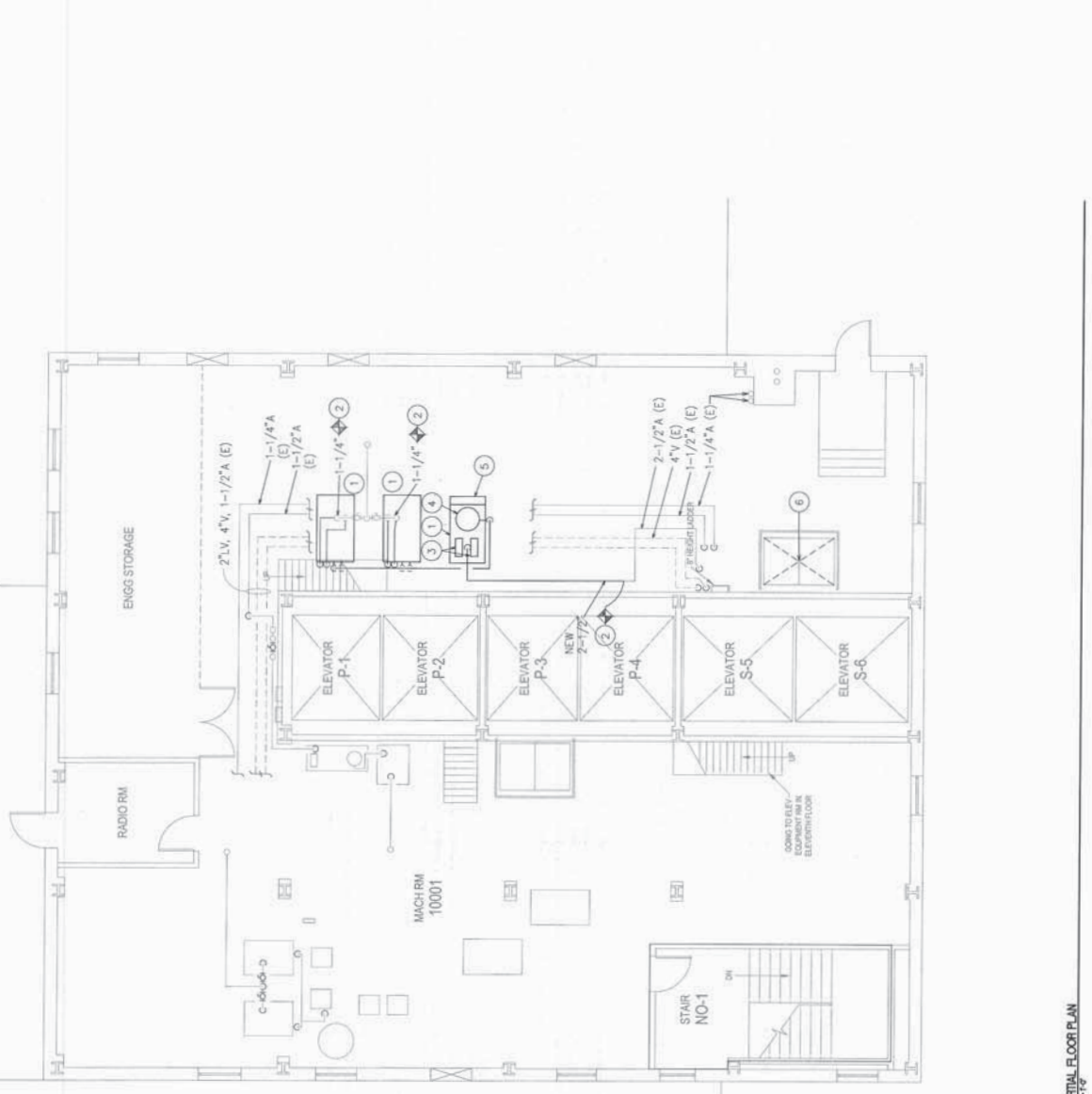
**FIELD VERIFY**  
 EXISTING ELECTRICAL EQUIPMENT WAS OBTAINED FROM SIMILAR BUILDING  
 CONSTRUCTION RECORDS. VISUAL OBSERVATION, HOWEVER, ACTUAL  
 EQUIPMENT LOCATIONS WERE NOT OBSERVED. VISUAL OBSERVATION  
 CONCERNING THE LOCATION OF THE EXISTING ELECTRICAL WORK MUST  
 BE MADE IN THE FIELD TO DETERMINE THE EXACT LOCATION, DEPTH,  
 BEYOND THESE PLANS AND THE ACTUAL CONDITIONS SHALL BE  
 CORRECTED IMMEDIATELY TO THE ARCHITECT FOR VERIFICATION AND/OR  
 CORRECTION.

**GENERAL NOTES**

- A. ALL PIPING SHOWN IS LOCATED ABOVE FINISHED FLOOR UNLESS NOTED OTHERWISE.
- B. CONTRACT DOCUMENTS CONSIST OF BOTH THE PROJECT MANUAL AND DRAWINGS, AND BOTH ARE INTENDED TO BE COMPLEMENTARY AS IF SHOWN ON BOTH.
- C. THE CONTRACT SHALL INCLUDE IN BID PROPOSAL ALL COSTS REQUIRED TO COMPLETE THE WORK SHOWN ON THESE PLANS. THE WORK OF OTHER TRADES PRIOR TO SUBMITTING A BID PROPOSAL, EVERYTHING SHOWN IS NEW UNLESS NOTED OTHERWISE.

**PLAN NOTES**

1. NEW DENTAL AIR COMPRESSOR SYSTEM/PACKAGE DAC-1.
2. RE-CONNECT DENTAL AIR PIPING TO COMPRESSORS.
3. NEW AIR DRIVERS (WITH DAC-1 PACKAGE).
4. NEW RECEIVER TANK (WITH DAC-1 PACKAGE).
5. NEW CONTROL PANEL (WITH DAC-1 PACKAGE).
6. EXISTING VACUUM PUMPS TO BE REMOVED. DISCONNECT ELECTRICAL AND PIPING. PREPARE TO EXTEND CIRCUIT TO NEW PUMPS). SEE PIPING SHEETS.



P2 PARTIAL FLOOR PLAN  
 TENTH FLOOR

KEY PLAN - TENTH FLOOR

<b>PROJECT #</b> 1022 <b>DATE</b> 08-20-2008		<b>CONSULTANTS</b> <b>DAE</b> <b>DESIGN-A-IDE ENGINEERING, INC.</b> 200 E. 13TH AVENUE, SUITE 100 DENVER, CO 80202 MECHANICAL, ELECTRICAL, AND ENERGY ENGINEERING		<b>ARCHITECT/ENGINEERS</b> <b>paradigm</b> Architecture   Engineering   Design-Build 300 East 13th Ave., Suite 1000 • Ft. Collins, CO 80521 • www.paradigm.com		<b>PROJECT #</b> 603-16-602 <b>PROJECT NAME</b> DENTAL GAS AND VACUUM <b>LOCATION</b> ROBLEY REY VA MEDICAL CENTER 800 W. 13TH AVENUE, FORT COLLINS, CO 80521 <b>DATE</b> 08-20-2008		<b>OFFICE OF</b> Construction and Facilities Management <b>PROJECT #</b> PPI03	
<b>DRAWING #</b> PFPNG PLAN - NEW WORK TENTH FLOOR <b>APPROVED PROJECT CREATOR</b>		<b>DATE</b> 08-20-2008 <b>CHANGED BY</b> <b>DATE</b>		<b>PROJECT #</b> 603-16-602 <b>PROJECT NAME</b> DENTAL GAS AND VACUUM <b>LOCATION</b> ROBLEY REY VA MEDICAL CENTER 800 W. 13TH AVENUE, FORT COLLINS, CO 80521 <b>DATE</b> 08-20-2008		<b>OFFICE OF</b> Construction and Facilities Management <b>PROJECT #</b> PPI03		<b>FOR CONSTRUCTION</b>	









**AMALGAM SEPARATOR SCHEDULE**

MARK	LOCATION	MANUFACTURER/MODEL	REMOVAL EFFICIENCY	NOTES
DAS-1	LEVEL 1	REBEC CATCH HG1000 PLUS	99.6%	ALL

NOTES:  
 1. EFFICIENCY BASED ON ISO ADA ANSI 11143-2008.  
 2. 7-YEAR WARRANTY.

**TOOL EQUIPMENT**

TAG	MANUFACTURER	MODEL NO.	NOTES
BOX-1	SNAP-ON	222 AFSP	POINT FRACTIONAL GENERAL SERVICE SET 22 TOOLS
BOX-2	SNAP-ON	144 TMPB	6 POINT METRIC/FRACTIONAL SET, 44 TOOLS, 1/4" DRIVE, CHROME
BOX-3	SNAP-ON	KRWIB5	5 LOCKING DRAWERS WITH A TOP COMPARTMENT TOOL BOX

**PACKAGED DENTAL AIR COMPRESSOR SCHEDULE**

MARK	LOCATION	SYSTEM AND/OR SERVICE	TYPE UNIT	HORSE POWER	INLET AIR FLOW	RECEIVER PRESSURE	RESERVE SIZE	ELECTRICAL POWER (60 HZ)		OPER. WEIGHT	MANUFACTURE	MODEL	REMARKS		
								NO. MOTORS	HP						
DAAC-1	10TH FLR	DENTAL AIR	QUADRUPLEX OIL-LESS RECIPROCATING	15.0	102.0	125	200	4	15	3	208	750	5820	BEACON MEDICAL LAST SET - 200V -1	NOTE 1.

NOTES:  
 1. PROVIDE PACKAGED AIR COMPRESSOR AND RECEIVER TANK WITH A DUPLEX ULTRA LOW DEMPION (-BOC) INTERNAL HEATER (DESCRANT AIR DRYER(MGAD-1)) TO MEET THE CAPACITY INDICATED. SINGLE POINT ELECTRICAL CONNECTION. COORDINATE WITH ELECTRICAL CONTRACTOR FOR ALL REQUIRED CONTROLS AND WIRING. SEE SHEET P0602.

**PACKAGE VACUUM PUMP SCHEDULE**

MARK	LOCATION	AREA AND/OR BLDG SERVED	SYSTEM AND/OR SERVICE	TYPE UNIT	CAPACITY	PUMP SYSTEM (SCHM)	PACKAGE BTUH	RECEIVER GAL	NOISE LEVEL DB	NOMINAL HP	MOTOR ELECTRICAL		WEIGHT	MANUFACTURER	MODEL	
											FLA	PHASE VOLTS				
DVP-1	LEVEL 1	3RD FLR	DENTAL SUITE	DUPLEX ROTARY VANE	37	37	10,180	60	71	5.0	33.8	3	208	1,601	1,601 lbs	BEACON MEDICAL V4 VSD-06DHD

NOTES:  
 1. WITH SINGLE POINT CONNECTION, NEMA 12 AND UL LISTED CONTROL PANEL, BACK UT LED TOUCH SCREEN, NETWORK CONNECTIONS. SEE SHEET P0602.

PROJECT: W222

DATE: \_\_\_\_\_

CONSULTANTS: **DAE**  
 DESIGN-AIRE ENGINEERING, INC.  
 200 North Park Avenue  
 Independence, MO 64650  
 Mechanical, Electrical, and Energy Engineering

ARCHITECT/ENGINEERS: **paradigm**  
 Architecture | Engineering | Design-Build  
 200 North Park Ave., Suite 200 | Independence, MO 64650 | www.paradigm.com

PLUMBING SCHEDULES

Project Title: **DENTAL GAS AND VACUUM**

Location: **ROBLEY REY VA MEDICAL CENTER**

Approved Project Director: \_\_\_\_\_

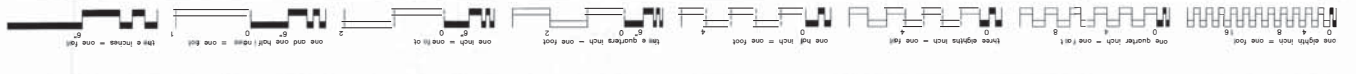
Project Number: **633-16-602**

Bidding Number: **1**

Drawing Number: **PP601**

Checklist: \_\_\_\_\_

Department of Construction and Facilities Management  
 Virginia Adams







**FIELD VERIFY**

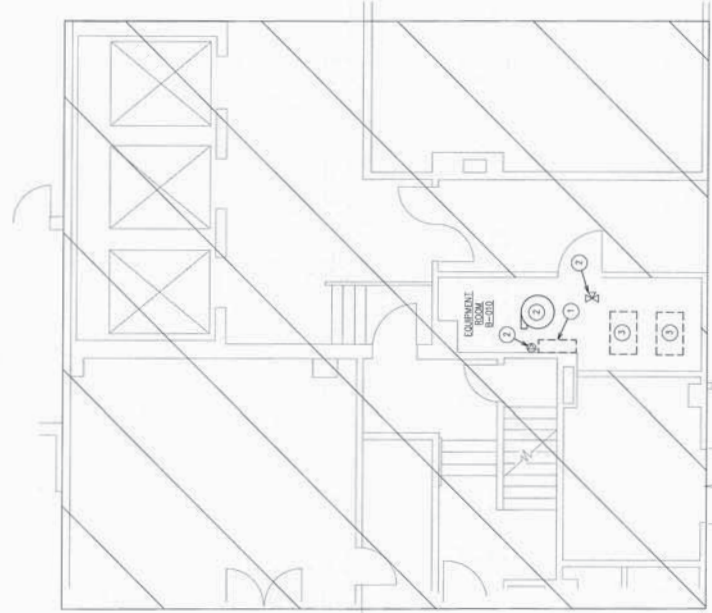
EXISTING ELECTRICAL EQUIPMENT WAS OBSERVED USING SEM IN BUILDING DRAWINGS AND CURSORY FIELD OBSERVATION. HOWEVER, ACTUAL "AS-BUILT" DRAWINGS WERE NOT AVAILABLE. CERTAIN INFORMATION CONCERNING THE EXISTING ELECTRICAL SYSTEMS AND WORK DEPTH, SIZE, ETC. PRIOR TO STARTING CONSTRUCTION ANY CONTACT WITH ANY EXISTING ELECTRICAL EQUIPMENT SHALL BE REPORTED IMMEDIATELY TO THE ARCHITECT FOR VERIFICATION AND/OR CORRECTION.

**GENERAL NOTES**

- ALL WORK SHALL BE IN ACCORDANCE WITH THE BEST QUALITY STANDARDS OF THE TRADE, AND SHALL CONFORM WITH ALL FEDERAL, STATE, AND LOCAL CODES AND STANDARDS.
- CONTRACT DOCUMENTS CONSIST OF BOTH THE PROJECT MANUAL AND THESE DRAWINGS. ANYTHING APPEARING ON EITHER MUST BE EXECUTED THE SAME AS IF SHOWN ON BOTH.
- THE CONTRACTOR SHALL INCLUDE IN BID PROPOSAL ALL COSTS FOR THE REMOVAL OF EXISTING ELECTRICAL SYSTEMS AND WORK REQUIRED FOR THE PROJECT. THIS SHALL INCLUDE THE WORK OF OTHER TRADES PRIOR TO SUBMITTING A BID PROPOSAL. POSSIBLE, HOWEVER, SYSTEMS HAVE BEEN SHOWN FOR CLARITY. ADDITIONAL FITTINGS AND/OR IMPROVEMENTS REQUIRED TO PROVIDE A COMPLETE AND COORDINATED SYSTEM SHALL BE BORNE BY THE CONTRACTOR.
- ALL CIRCUITS OVER 100' IN LENGTH SHALL BE A MINIMUM #10 AWG CONDUCTOR.
- WIRING SYSTEM SHALL BE CONDUIT AND WIRE. MINIMUM WIRE SIZE SHALL BE #10 AWG UNLESS OTHERWISE NOTED. ALL WIRE SHALL BE STRANDED UNLESS OTHERWISE NOTED.
- ALL COVER PLATES FOR ELECTRICAL DEVICES SHALL BE OF A COLOR TO MATCH THE AREA COLOR SCHEME AS DIRECTED BY THE OWNER.
- UPDATE DATA SHEET IN ALL PANELS TO REFLECT CHANGES.
- ALL UNUSED CONDUIT AND WIRE TO BE REMOVED BACK TO SOURCE.

**PLAN NOTES**

- EXISTING CONTROL PANEL TO BE REMOVED. DISCONNECT ALL WIRING FROM EXISTING PANEL AND EXTEND CIRCUIT TO NEW CONTROL PANEL. SEE PIPING SHEETS.
- RECONNECT AND REWIRE ALL CONTROL WIRING, POWER AND LOW VOLTAGE FROM EQUIPMENT AS REQUIRED, BACK TO SOURCE.
- EXISTING VACUUM PUMPS TO BE REMOVED. DISCONNECT ELECTRICAL WIRING FROM EXISTING PUMPS AND PREPARE TO EXTEND CIRCUIT TO NEW PUMP(S). SEE PIPING SHEETS.



**EA PARTIAL FLOOR PLAN**



**KEY PLAN - BASEMENT**



<b>PROJECT REF ID</b>	<b>ARCHITECT/ENGINEERS</b>		<b>CONSULTANTS</b>		<b>DATE</b>
	Architecture   Engineering   Design-Build 200 King Street East, Lakeside, NY 12549-1511   www.paradigm.com		DESIGN-A-IZE ENGINEERING, INC. 200 King Street East, Lakeside, NY 12549-1511 Mechanical, Electrical, and Energy Engineering		
<b>Drawing Title</b>	<b>Project Title</b>	<b>Project Number</b>	<b>Office of Construction and Facilities Management</b>	<b>DATE</b>	
ELECTRICAL DEMOLITION PLAN - BASEMENT	DENTAL GAS AND VACUUM	603-95-602	Office of Construction and Facilities Management	10/23/2011	
Approved Project Director	<b>Location</b>	<b>Drawing Number</b>		<b>DATE</b>	
	ROBLEY VA MEDICAL CENTER 400 22nd St. Lakeside, NY 12549	EDJ01		10/23/2011	

BD DOCUMENTS FOR CONSTRUCTION

**FIELD VERIFY**

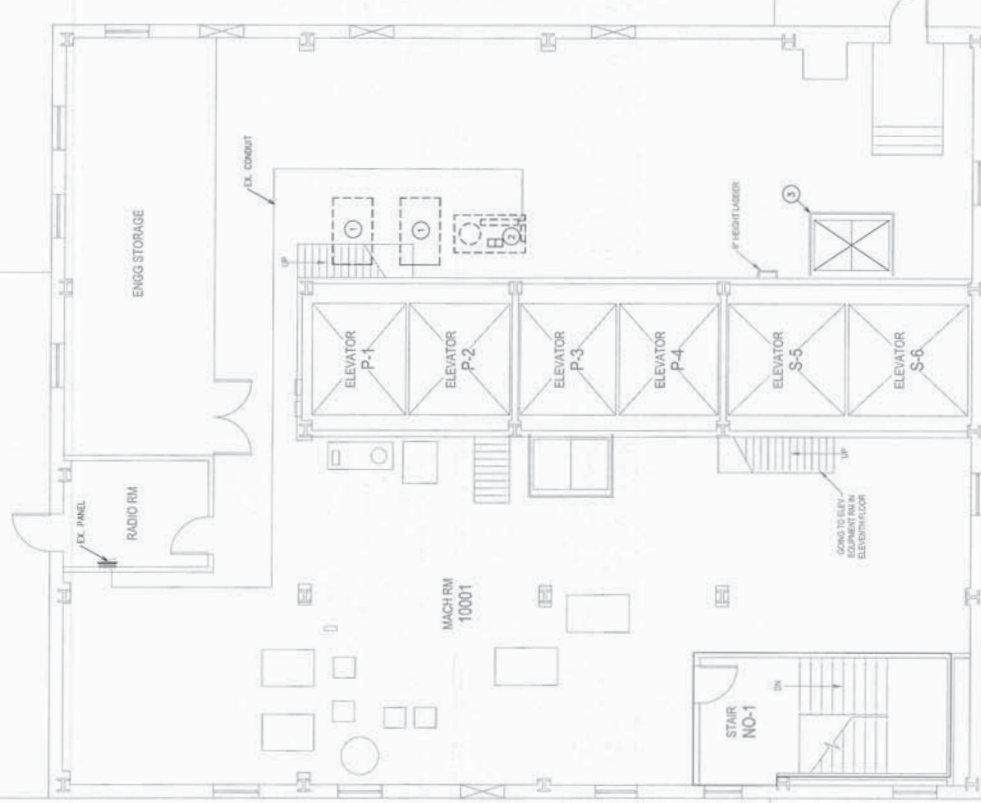
FIELD VERIFY ALL ELECTRICAL EQUIPMENT HAS BEEN REMOVED FROM THE BUILDING DRAWINGS AND CURRENT FIELD OBSERVATION. THE CONTRACTOR SHALL VERIFY ALL AS-BUILT DRAWINGS WERE NOT AVAILABLE. CERTAIN INFORMATION IS MISSING FROM THE AS-BUILT DRAWINGS. THE CONTRACTOR SHALL VERIFY THE DEPTH, SIZE, ETC. PRIOR TO STARTING CONSTRUCTION. ANY CONFLICT BETWEEN THE AS-BUILT DRAWINGS AND THE ACTUAL CONDITIONS SHALL BE REPORTED IMMEDIATELY TO THE ARCHITECT FOR VERIFICATION AND/OR CORRECTION.

**GENERAL NOTES**

- ALL WORK SHALL BE IN ACCORDANCE WITH THE BEST QUALITY STANDARDS OF THE TRADE, AND SHALL CONFORM WITH ALL FEDERAL, STATE, AND LOCAL CODES AND STANDARDS.
- CONTRACT DOCUMENTS CONSIST OF BOTH THE PROJECT MANUAL AND THESE SPECIFICATIONS. ANYTHING APPEARING ON EITHER MUST BE EXECUTED THE SAME AS IF SHOWN ON BOTH.
- THE CONTRACTOR SHALL INCLUDE IN BID PROPOSAL ALL COSTS FOR THE CONTRACT WORK. THE CONTRACTOR SHALL BE RESPONSIBLE FOR THE PROTECTION OF ALL EXISTING UTILITIES AND EQUIPMENT. THE CONTRACTOR SHALL BE RESPONSIBLE FOR THE PROTECTION OF ALL EXISTING UTILITIES AND EQUIPMENT. THE CONTRACTOR SHALL BE RESPONSIBLE FOR THE PROTECTION OF ALL EXISTING UTILITIES AND EQUIPMENT.
- CONSTRUCTION DOCUMENTS SHALL BE FOLLOWED AS CLOSELY AS POSSIBLE. HOWEVER, SYSTEMS HAVE BEEN SHOWN. THE CONTRACTOR SHALL BE RESPONSIBLE FOR OBTAINING ALL NECESSARY PERMITS, APPROVALS, AND/OR APPROPRIATELY REQUIRED TO PROVIDE A COMPLETE AND COORDINATED SYSTEM SHALL BE BORNE BY THE CONTRACTOR.
- ALL CIRCUITS OVER 100' IN LENGTH SHALL BE A MINIMUM #10 AWG CONDUCTOR.
- WIRING SYSTEM SHALL BE CONDUIT AND WIRE. MINIMUM WIRE SIZE SHALL BE #10 AWG CONDUCTOR FOR #10 AWG AND SMALLER WIRE STRANDS IN LARGER SIZES.
- ALL COVER PLATES FOR ELECTRICAL PANELS SHALL BE OF A COLOR TO MATCH THE AREA COLOR SCHEME AS DIRECTED BY THE OWNER.
- UPDATE DATA SHEET IN ALL PANELS TO REFLECT CHANGES.
- ALL UNUSED CONDUIT AND WIRE TO BE REMOVED BACK TO SOURCE.

**PLAN NOTES**

- DISCONNECT POWER FROM EXISTING COMPRESSORS AND PREPARE FOR RECONNECTION OF NEW EQUIPMENT. SEE PIPING SHEETS.
- DISCONNECT POWER FROM EXISTING AIR DRIVERS AND CONTROL PANEL AND PREPARE FOR RECONNECTION OF NEW EQUIPMENT. SEE PIPING SHEETS.
- ACCESS PANELS TO 9TH FLOOR UTILITY ELEVATOR.



10TH FLOOR ELECTRICAL PLAN - DEMOLITION

F2 PARTIAL FLOOR PLAN



<p>PROJECT #1022</p>		<p>CONSULTANTS</p> <p><b>DAE</b></p> <p>DESIGN-A-IZE ENGINEERING, INC.          220 WEST 10TH AVENUE          DENVER, CO 80202          MECHANICAL, ELECTRICAL, AND ENERGY ENGINEERING</p>		<p>ARCHITECT/ENGINEERS</p> <p><b>paradigm</b></p> <p>Architecture   Engineering   Design-Build          200 West Cook Field, Suite 400 • Denver, CO 80202 • www.paradigm.com</p>		<p>DRIVING TITLE</p> <p>ELECTRICAL DEMOLITION PLAN          TENTH FLOOR</p> <p>APPROVED PROJECT DIRECTOR</p>		<p>PROJECT FILE</p> <p>DENTAL GAS AND VACUUM</p> <p>LOCATION: ROBERT VA MEDICAL CENTER          800 228th AVENUE, DENVER, CO 80202</p> <p>DATE: 08-20-2008</p>		<p>PROJECT NUMBER</p> <p>603-95-6022</p> <p>DRAWING NUMBER</p> <p>EDJ02</p>		<p>OFFICE OF CONSTRUCTION AND FACILITIES MANAGEMENT</p> <p>UNIVERSITY OF COLORADO</p>	
----------------------	--	--	--	--	--	--	--	--	--	---	--	---	--

BD DOCUMENTS FOR CONSTRUCTION



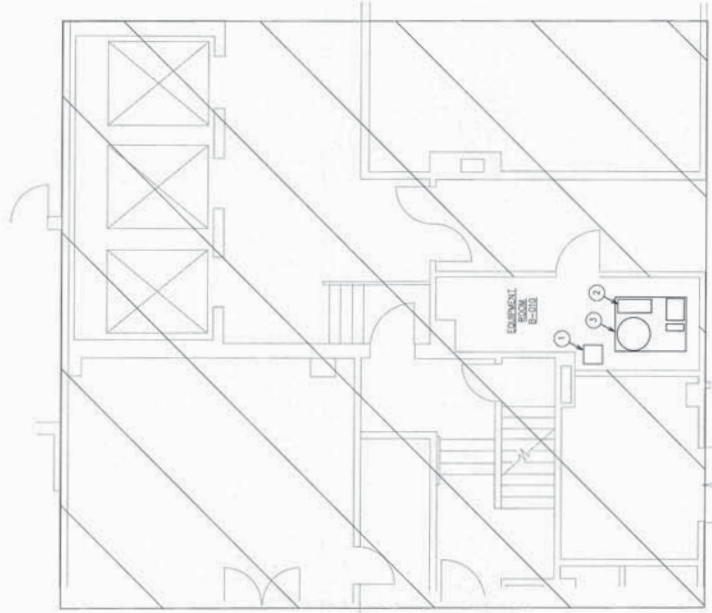
**FIELD VERIFY**  
 EXISTING ELECTRICAL EQUIPMENT WAS OBTAINED FROM SIMILAR BUILDING DRAWINGS AND COURTESY FIELD OBSERVATION. HOWEVER, ACTUAL "AS-BUILT" DRAWINGS WERE NOT AVAILABLE. CERTAIN INFORMATION, INCLUDING BUT NOT LIMITED TO, THE EXACT LOCATION OF THE DEPTH, SIZE, ETC. PRIOR TO STARTING CONSTRUCTION, ANY CONFLICT REPORTED IMMEDIATELY TO THE ARCHITECT FOR VERIFICATION AND/OR CORRECTION.

**GENERAL NOTES**

- A. ALL WORK SHALL BE IN ACCORDANCE WITH THE BEST QUALITY STANDARDS OF TRADE AND SHALL CONFORM WITH ALL FEDERAL, STATE, AND LOCAL CODES AND STANDARDS.
- B. CONSTRUCTION SHALL BE THE RESPONSIBILITY OF BOTH THE ARCHITECT AND DRAWINGS AND BOTH ARE TO BE COORDINATED AS IF SHOWN ON BOTH.
- C. THE CONTRACTOR SHALL INCLUDE IN BID PROPOSAL ALL COSTS NECESSARY TO COMPLETE THE WORK AND SHALL EXAMINE THE SCOPE OF WORK OF OTHER TRADES PRIOR TO SUBMITTING A BID PROPOSAL.
- D. CONSTRUCTION DOCUMENTS SHALL BE FOLLOWED AS CLOSELY AS POSSIBLE. HOWEVER, SYSTEMS HAVE BEEN SHOWN FOR CLARITY. ANY OFFSETS, ADDITIONAL FITTINGS AND/OR APPURTENANCES REQUIRED TO PROVIDE A COMPLETE AND COORDINATED SYSTEM SHALL BE DONE BY THE CONTRACTOR.
- E. ALL CIRCUITS OVER 100' IN LENGTH SHALL BE A MINIMUM #10 AWG CONDUCTOR.
- F. WIRING SYSTEM SHALL BE CONDUIT AND WIRE. MINIMUM WIRE SIZE SHALL BE #10 AWG. ALL WIRING SHALL BE STRANDED IN LARGER SIZES.
- G. ALL COVER PLATES FOR ELECTRICAL DEVICES SHALL BE OF A COLOR TO MATCH THE AREA COLOR SCHEME AS DIRECTED BY THE OWNER.
- H. UPDATE DATA SHEET IN ALL PANELS TO REFLECT CHANGES.
- I. ALL UNUSED CONDUIT AND WIRE TO BE REMOVED BACK TO SOURCE.

**PLAN NOTES**

- 1. NEW AMALGAM SEPARATOR, CONNECT TO EXISTING 120V CIRCUIT.
- 2. NEW COVERS, PANELS, EXTENDING EXISTING CIRCUIT AND RECONNECT TO NEW CONTROL PANEL AS REQUIRED.
- 3. NEW MODULAR DENTAL VACUUM SYSTEM DVP-11. SEE PLUMBING SPECS.



**E0 PARTIAL FLOOR PLAN**



**KEY PLAN - BASEMENT**

<b>BD DOCUMENTS FOR CONSTRUCTION</b>		<b>Office of Construction and Facilities Management</b> <small>Department of Water and Urban Affairs</small>	
<b>Project Title</b>	DENTAL GAS AND VACUUM	<b>Project Number</b>	603-16-602
<b>Location</b>	ROBLEY REVA MEDICAL CENTER	<b>Building Number</b>	1
<b>Date</b>	08-29-2016	<b>Drawing Number</b>	EE/01
<b>Contractor</b>	DK	<b>Drawn By</b>	DK
<b>Checked By</b>	DK	<b>Reviewed By</b>	DK
<b>Approved Project Director</b>			
<b>ARCHITECT/ENGINEERS</b>			
 <b>paradigm</b> Architecture   Engineering   Design-Build <small>200 King Street, Baltimore, MD 21201-3311 • www.paradigmeng.com</small>			
<b>CONSULTANTS</b>			
 <b>DAE</b> <b>DESIGN-A-IZE ENGINEERING, INC.</b> <small>2000 15111 44th Avenue, Suite 200, Richmond, VA 23234-4400          (800) 331-1111 • www.dae.com</small> Mechanical, Electrical, and Energy Engineering			
<b>PROJECT #</b>		<b>DATE</b>	

**FIELD VERIFY**

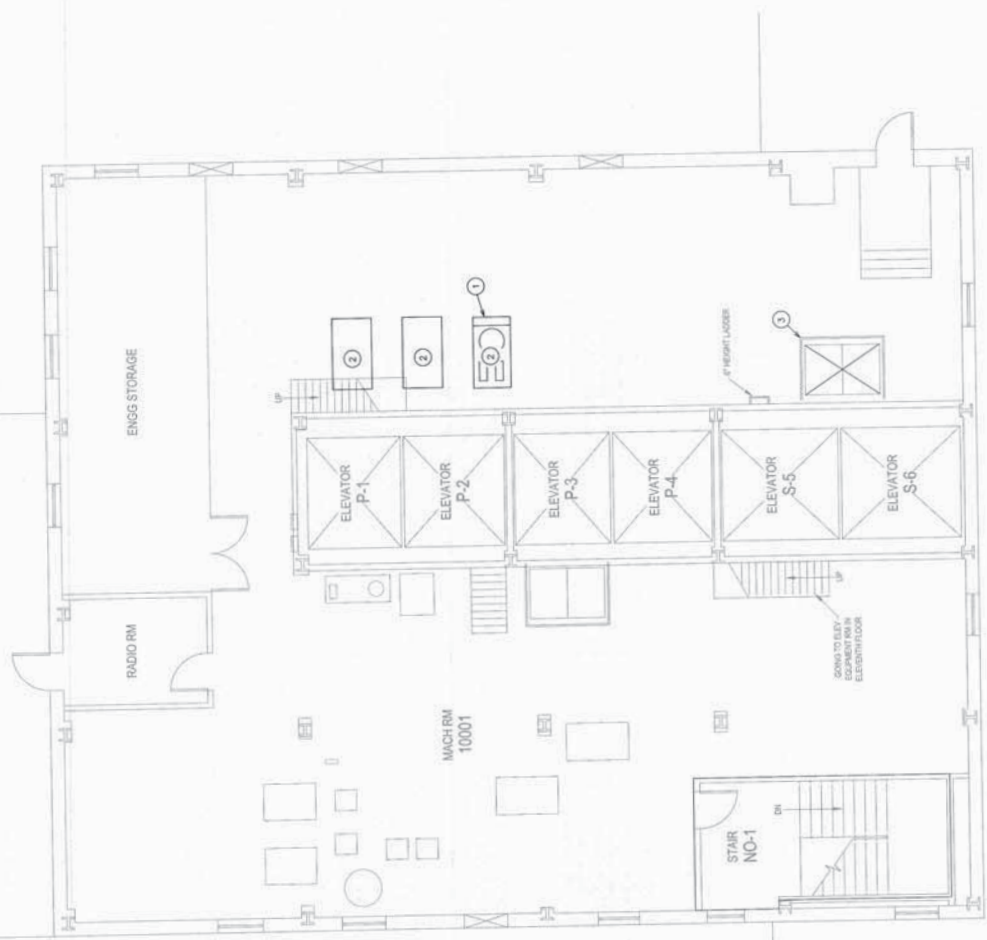
EXISTING ELECTRICAL EQUIPMENT WAS OBTAINED FROM SIMILAR BUILDING DRAWINGS AND CURSORY FIELD OBSERVATION. HOWEVER, ACTUAL "AS-BUILT" DRAWINGS WERE NOT AVAILABLE. THEREFORE, THE EXISTING ELECTRICAL WORK MUST BE VERIFIED IN THE FIELD TO DETERMINE THE EXACT LOCATIONS, DEPTHS, TYPES, PANELS AND THE ACTUAL CONDITIONS SHALL BE REPORTED IMMEDIATELY TO THE ARCHITECT FOR VERIFICATION AND/OR CORRECTION.

**GENERAL NOTES**

- A. ALL WORK SHALL BE IN ACCORDANCE WITH THE BEST QUALITY MATERIALS AND METHODS AS SPECIFIED IN THE CONTRACT, FEDERAL, STATE, AND LOCAL CODES AND STANDARDS.
- B. CONTRACT DOCUMENTS CONSIST OF BOTH THE PROJECT MANUAL AND DRAWINGS, AND BOTH ARE INTENDED TO BE COMPLEMENTARY - ANYTHING APPEARING ON EITHER MUST BE EXECUTED THE SAME AS IT'S SHOWN ON BOTH.
- C. THE CONTRACTOR SHALL INCLUDE IN HIS PERSONAL ALL COSTS REQUIRED FOR THE PROJECT, AND SHALL EXAMINE THE SCOPE OF WORK OF OTHER TRADES PRIOR TO SUBMITTING A BID PROPOSAL.
- D. CONSTRUCTION DOCUMENTS SHALL BE FOLLOWED AS CLOSELY AS POSSIBLE. ANY OMISSIONS, ADDITIONAL FITTINGS, AND/OR APPROPRIATE REVISIONS SHALL BE MADE BY THE CONTRACTOR. COORDINATED SYSTEM SHALL BE DONE BY THE CONTRACTOR.
- E. CONDUIT OVER 100' IN LENGTH SHALL BE A MINIMUM #10 AWG CONDUIT.
- F. WIRING SYSTEM SHALL BE CONDUIT AND WIRE. MINIMUM WIRE SIZE SHALL BE #12 AWG. USE SOLID CONDUCTOR FOR #10 AWG AND SMALLER, USE STRANDED IN LARGER SIZES.
- G. ALL COVER PLATES FOR ELECTRICAL DEVICES SHALL BE OF A COLOR TO MATCH THE AREA COLOR SCHEME AS DIRECTED BY THE OWNER.
- H. UPDATE DATA SHEET IN ALL PANELS TO REFLECT CHANGES.
- I. ALL UNUSED CONDUIT AND WIRE TO BE REMOVED BACK TO SOURCE.

**PLAN NOTES**

1. RECONNECT EXISTING POWER TO SINGLE POINT CONNECTION OF NEW EQUIPMENT AS REQUIRED.
2. PACKAGED DENVAL AIR SYSTEM. SEE SHEET PP102.
3. ACCESS PANELS TO 8TH FLOOR UTILITY ELEVATOR.



10TH FLOOR ELECTRICAL PLAN - REVISED



F2 PARTIAL FLOOR PLAN

BD DOCUMENTS FOR CONSTRUCTION

<b>CONSULTANTS</b>  <b>DAE</b> DESIGN-AIRE ENGINEERING, INC. 200 West Orange Avenue Suite 1000 Jacksonville, FL 32202 www.dae-engineering.com Mechanical, Electrical, and Energy Engineering	<b>ARCHITECT/ENGINEERS</b>  <b>paradigm</b> Architecture   Engineering   Design-Build 300 Energy Center Blvd., Suite 400   Ft. Lauderdale, FL 33301   www.paradigm.com		Project No. DENVAL GAS AND VACUUM	Project Number 603-16-602
			Drawing No. ELECTRICAL PLAN - NEW WORK TENTH FLOOR	Drawing Number EE102
Approved Project Director 		Location ROBLEY REEVE MEDICAL CENTER	Checked DH	Date 09-20-2008