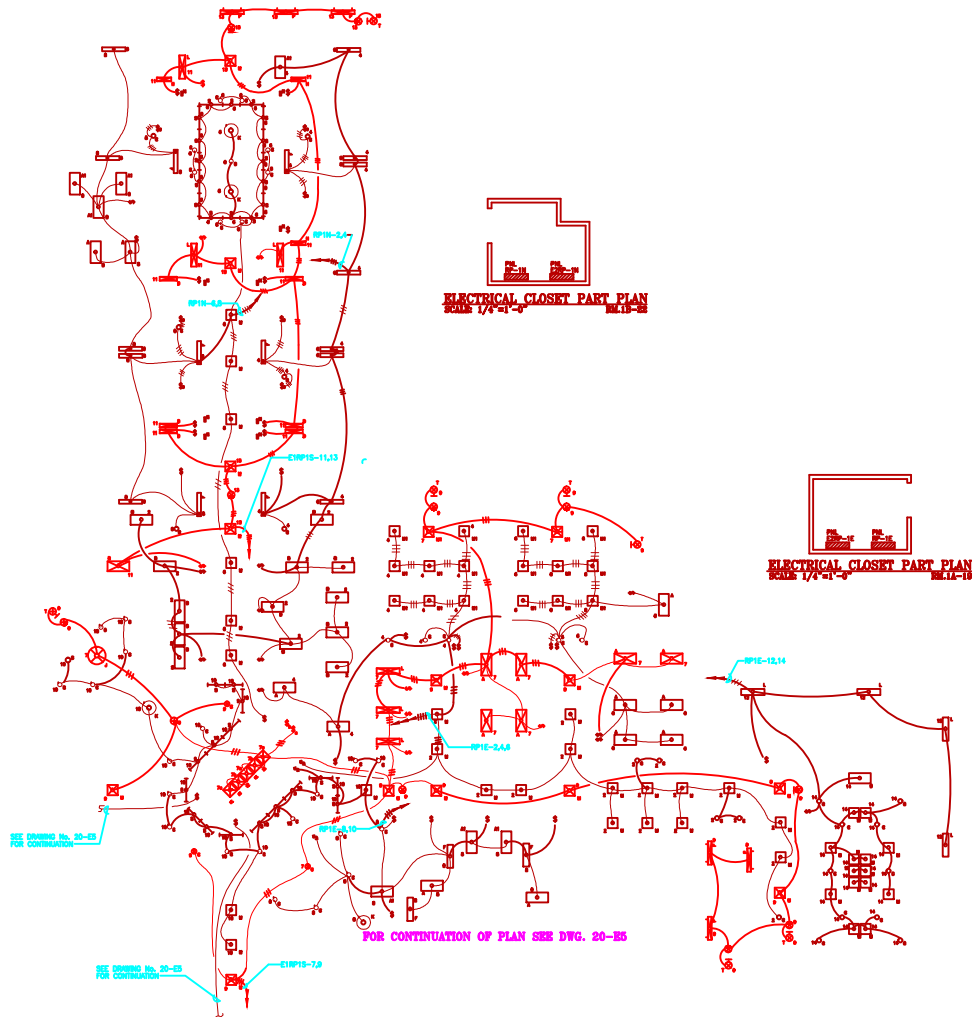


NOTES:

1. FOR LOCATION OF PANEL "CAPP-15", SEE DRAWING No. 20-ES.
2. NIGHT LIGHTS IN PATIENT ROOMS IN THE NORTH WING SHALL ALL BE CONNECTED TO CIRCUIT No. NP16-10, VIA A TIME CLOCK LOCATED IN ELECTRICAL CLOSET 18-ES.

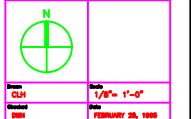


FULLY SPRINKLERED

ALL MATERIALS, EQUIPMENT AND WORK SHALL BE IN ACCORDANCE WITH THE LATEST EDITIONS OF THE NFPA 70, NATIONAL ELECTRICAL CODE, AND THE NFPA 96, NATIONAL FIRE PROTECTION ASSOCIATION, STANDARD FOR AUTOMATIC FIRE EXTINGUISHING SYSTEMS FOR COMMERCIAL KITCHENS. THE CONTRACTOR SHALL BE RESPONSIBLE FOR OBTAINING ALL NECESSARY PERMITS AND INSURANCE.

Zeldner Roberts Partnership Inc.  
ARCHITECTS  
100 N. W. 10th St., Suite 200  
Baltimore, MD 21201

BALTIMORE VA  
REHAB. & EXTENDED  
CARE CENTER  
BALTIMORE



First Floor Plan  
NORTH EAST  
LIGHTING

Drawn by	CUH	Scale	1/8" = 1'-0"
Checked by	DBH	Date	FEBRUARY 28, 1995
Project No.	9404	Sheet No.	20-E4 0