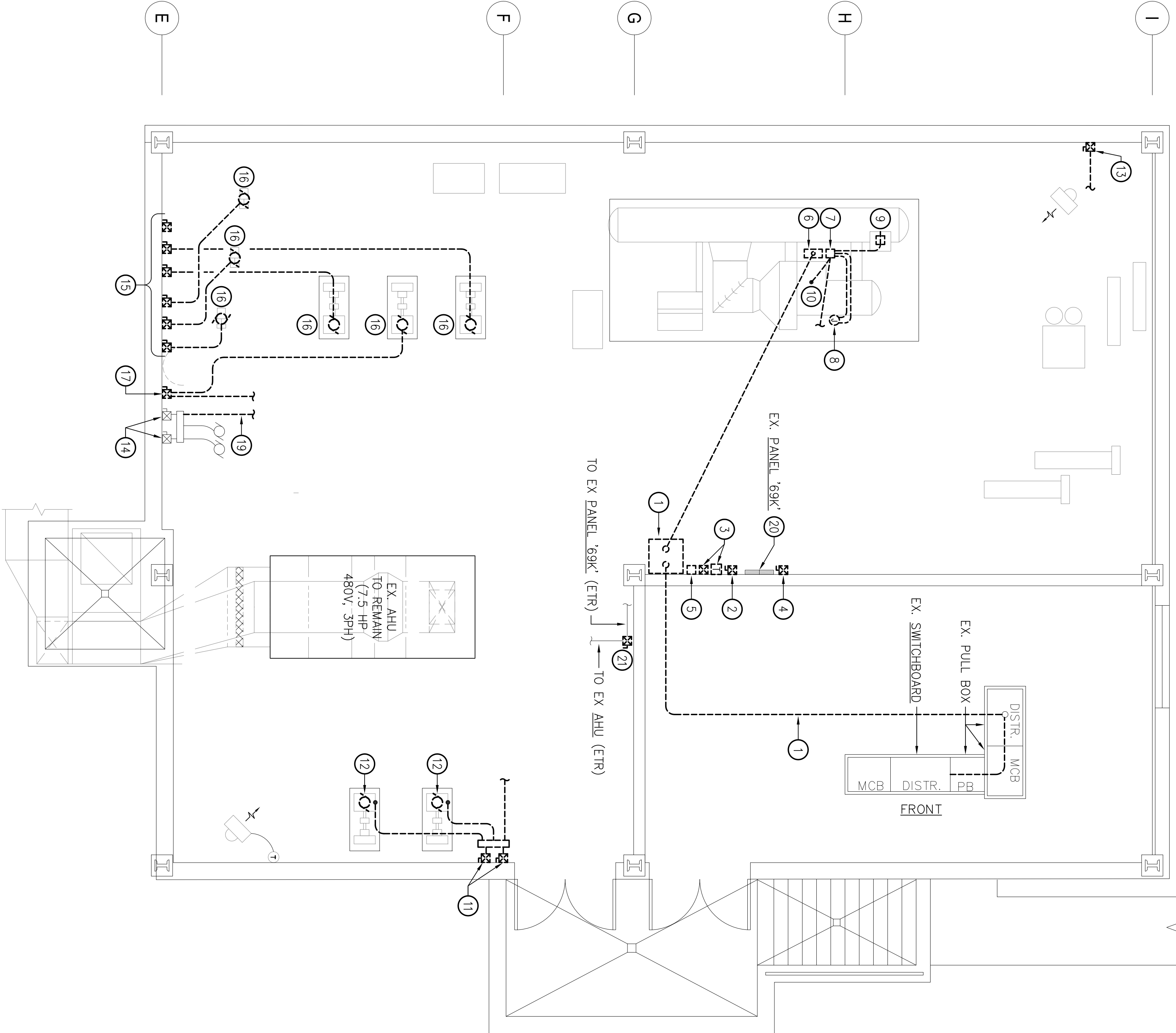


|                           |                       |                   |       |                |            |                         |     |           |  |
|---------------------------|-----------------------|-------------------|-------|----------------|------------|-------------------------|-----|-----------|--|
| EX. PANEL: 69K            |                       | RATING: 400       |       | AMPS MAIN: M/O |            | VOLTAGE: 480 V/ 277 V   |     | 3 PH, 4 W |  |
| A/C: 14K                  |                       | MOUNTING: SURFACE |       |                |            | NOTE: GE A-SERIES       |     |           |  |
| LOCATION: MECHANICAL ROOM |                       |                   |       |                |            | EXISTING CONNECTIONS    |     |           |  |
| CKT                       | EQUIPMENT SERVED      | LOAD (KVA)        | BUS   |                | LOAD (KVA) | EQUIPMENT SERVED        | CKT |           |  |
|                           |                       | Aø Bø Cø          | A B C | CB             | Aø Bø Cø   |                         |     |           |  |
| 1                         | SUMP PUMP (ETR)       | -                 | 30    | →              | 30         | COOLING TOWER FAN (RX)  | 2   |           |  |
| 3                         | -                     | -                 | →     | →              | -          | -                       | 4   |           |  |
| 5                         | -                     | -                 | →     | →              | -          | -                       | 6   |           |  |
| 7                         | COND. WATER PUMP (RX) | -                 | 20    | →              | 20         | CHILLER CONTROL (RX)    | 8   |           |  |
| 9                         | -                     | -                 | →     | →              | -          | -                       | 10  |           |  |
| 11                        | -                     | -                 | →     | →              | -          | -                       | 12  |           |  |
| 13                        | SPARE                 | -                 | 20    | →              | 20         | CHILLER OIL PUMP (RX)   | 14  |           |  |
| 15                        | -                     | -                 | →     | →              | -          | -                       | 16  |           |  |
| 17                        | -                     | -                 | →     | →              | -          | -                       | 18  |           |  |
| 19                        | HALLWAY H/V UNIT      | -                 | 20    | →              | 20         | HOT WATER PUMPS (RX)    | 20  |           |  |
| 21                        | -                     | -                 | →     | →              | -          | -                       | 22  |           |  |
| 23                        | -                     | -                 | →     | →              | -          | -                       | 24  |           |  |
| 25                        | LARGE FAN (RX)        | -                 | 20    | →              | 20         | AIR COMPRESSOR (ETR)    | 26  |           |  |
| 27                        | -                     | -                 | →     | →              | -          | -                       | 28  |           |  |
| 29                        | -                     | -                 | →     | →              | -          | -                       | 30  |           |  |
| 31                        | SPARE (ETR)           | -                 | 20    | →              | 20         | SPARE                   | 32  |           |  |
| 33                        | -                     | -                 | →     | →              | -          | -                       | 34  |           |  |
| 35                        | -                     | -                 | →     | →              | -          | -                       | 36  |           |  |
| 37                        | SPARE (ETR)           | -                 | 20    | →              | 20         | CHILLED WATER PUMP (RX) | 38  |           |  |
| 39                        | -                     | -                 | →     | →              | -          | -                       | 40  |           |  |
| 41                        | ↓                     | -                 | 20    | →              | 20         | AHU-MECH. RM. (ETR)     | 42  |           |  |
| 43                        | SPARE (ETR)           | -                 | →     | →              | -          | -                       | 44  |           |  |
| 45                        | -                     | -                 | →     | →              | -          | -                       | 46  |           |  |
| 47                        | -                     | -                 | →     | →              | -          | -                       | 48  |           |  |
| 49                        | SPARE (ETR)           | -                 | 20    | →              | 20         | LTO-MECH. RM. (ETR)     | 50  |           |  |
| 51                        | SPARE (ETR)           | -                 | 20    | →              | 20         | SPARE (ETR)             | 52  |           |  |
| 53                        | SPARE (ETR)           | -                 | 20    | →              | 20         | SPARE (ETR)             | 54  |           |  |
| 55                        | SPARE (ETR)           | -                 | 20    | →              | 20         | SPARE (ETR)             | 56  |           |  |
| 57                        | SPARE (ETR)           | -                 | 20    | →              | 20         | SPARE (ETR)             | 58  |           |  |
| 59                        | SPARE (ETR)           | -                 | 20    | →              | 20         | SPARE (ETR)             | 60  |           |  |
| 61                        | TESTER OUTLET (ETR)   | -                 | 60    | →              | 60         | SPARE (ETR)             | 62  |           |  |
| 63                        | -                     | -                 | →     | →              | -          | -                       | 64  |           |  |
| 65                        | -                     | -                 | →     | →              | -          | -                       | 66  |           |  |
| 67                        | SPARE (ETR)           | -                 | →     | →              | -          | -                       | 68  |           |  |
| 69                        | -                     | -                 | →     | →              | -          | -                       | 70  |           |  |
| 71                        | -                     | -                 | →     | →              | -          | -                       | 72  |           |  |
| 73                        | -                     | -                 | →     | →              | -          | -                       | 74  |           |  |
| 75                        | -                     | -                 | →     | →              | -          | -                       | 76  |           |  |
| 77                        | -                     | -                 | →     | →              | -          | -                       | 78  |           |  |
| 79                        | -                     | -                 | →     | →              | -          | -                       | 80  |           |  |
| 81                        | -                     | -                 | →     | →              | -          | -                       | 82  |           |  |
| 83                        | ↓                     | -                 | →     | →              | -          | -                       | 84  |           |  |
| SUB-TOTALS                |                       |                   |       |                |            |                         |     |           |  |
| CONNECTED LOAD:           |                       |                   |       |                |            |                         |     |           |  |
| Aø: -                     | KVA= -                | A                 |       |                |            |                         |     |           |  |
| Bø: -                     | KVA= -                | A                 |       |                |            |                         |     |           |  |
| Cø: -                     | KVA= -                | A                 |       |                |            |                         |     |           |  |



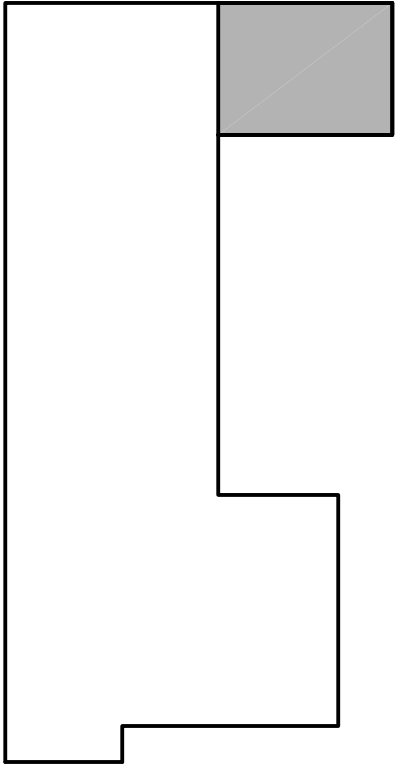
1 BASEMENT FLOOR PLAN - ELECTRICAL - DEMOLITION  
SCALE: 1/4" = 1'-0"

GENERAL NOTES:

- REFER TO DRAWING 69-E1 FOR ELECTRICAL LEGEND, ABBREVIATIONS AND GENERAL NOTES.

DRAWING NOTES:

- RX. REDUCED VOLTAGE CHILLER STARTER AND ASSOCIATED FEEDER BACK TO SWITCHBOARD. LABEL: 400A, 3Ø. CIRCUIT BREAKER SERVING AS "SPARE". SEAL ALL OPENINGS IN WALLS, PULL BOXES, ETC. CREATED BY REMOVAL OF CONDUIT. ALL PATCHING & FINISHING SHALL MATCH ADJACENT SURFACES.
- RX. STARTER SERVING CHILLER OIL PUMP AND ASSOCIATED BRANCH CIRCUIT BACK TO PANEL 69K.
- RX. XFMR. AND STARTER SERVING CHILLER CONTROL AND ASSOCIATED BRANCH CIRCUIT BACK TO PANEL 69K.
- RX. STARTER SERVING COOLING TOWER FAN (CONDENSER FAN) & ASSOCIATED BRANCH CIRCUIT BACK TO PANEL 69K.
- RX. JUNCTION BOX.
- RX. CONNECTION TO CHILLER MOTOR TERMINAL BOX AND ASSOCIATED FEEDER BACK TO REDUCED VOLTAGE STARTER.
- RX. OIL PUMP AND CONTROLS JUNCTION BOX AND ASSOCIATED BRANCH CIRCUITS BACK TO REDUCED VOLTAGE STARTER.
- RX. CONNECTION TO CHILLER CONTROL PANEL.
- RX. SINGLE RECEPTACLE SURFACE MOUNTED ON CHILLER.
- RX. CONNECTION TO CHILLER CONTROLS.
- RX. (2) COMBINATION STARTERS SERVING (2) CONDENSER WATER PUMPS. (1) JUNCTION PUSHBUTTON STATION AND ASSOCIATED BRANCH CIRCUIT BACK TO PANEL 69K.
- RX. CONNECTION TO CONDENSER WATER PUMP BEING REMOVED.
- RX. COMBINATION STARTER ABANDONED IN PLACE (LOAD SIDE CONNECTION REMOVED) AND ASSOCIATED BRANCH CIRCUIT BACK TO PANEL 69K.
- EX. (2) SUMP PUMPS, STARTERS, WIRE TROUGH & BRANCH CIRCUIT TO MOTORS TO REMAIN.
- RX. (6) COMBINATION STARTERS & TROUGH BELOW SERVING CHILLED/HOT WATER PUMPS AND ASSOCIATED BRANCH CIRCUITS BACK TO PANEL 69K.
- RX. CONNECTION TO CHILLED/HOT WATER PUMP BEING REMOVED.
- RX. COMBINATION STARTER SERVING CHILLED/HOT WATER PUMP AND ASSOCIATED BRANCH CIRCUIT BACK TO PANEL 69K.
- RX. CONNECTION TO CIRCUIT BREAKER SERVING HEATING/VENTILATING UNIT BEING REPLACED. EXISTING CIRCUIT BREAKER SHALL REMAIN FOR REUSE. REFER TO NEW WORK PLAN.
- RX. HOMERUN SERVING SUMP PUMPS FROM WIRE TROUGH BACK TO PANEL 69K. CIRCUIT #1 (CONDUIT RUN BELOW SLAB). REMOVE EXISTING EXPOSED CONDUIT IN ITS ENTIRETY. SEAL OPENING IN BOTTOM OF WIRE TROUGH AND PATCH & FINISH FLOOR OPENINGS TO MATCH ADJACENT SURFACES. REFER TO NEW WORK PLAN FOR RECONNECTION.
- EX. BRANCH CIRCUITS EXISTING BOTTOM OF PANEL & RUNNING UNDER SLAB SERVE EQUIPMENT BEING REMOVED WITH EXCEPTION OF SUMP PUMPS. (SEE CIRCLES #1 & 2). REMOVE EXISTING EXPOSED CONDUITS IN THEIR ENTIRETY. SEAL OPENINGS IN PANEL CABINET & PATCH & FINISH FLOOR SLAB TO MATCH ADJACENT SURFACES.
- RX. NEUA SIZE "1" COMBINATION STARTER / DISCONNECT. EXISTING LOAD SIDE & LINE SIDE BRACH CIRCUITS SHALL REMAIN FOR REUSE. REFER TO NEW WORK PLAN.



KEY PLAN  
NO SCALE

Revisions

1

2

3

4

5

6

7

8

9

Consistants

DERBY ENTERPRISES  
ARCHITECTURE  
ENGINEERING  
1301 ENTERPRISE COURT, SUITE 103-C  
BEL AIR, MARYLAND 21014-1847  
410.837.0079  
410.838.1603

Seal

Burdette, Koehler, Murphy & Associates, Inc.  
Mechanical / Electrical Consulting Engineers  
1423 Oakview Road  
Suite 200  
Baltimore, Maryland 21209  
P: 410.377.2843  
www.bkma.com

Drawing Title  
BASEMENT FLOOR PLAN  
ELECTRICAL - DEMOLITION

Project Title  
BUILDING 69  
HVAC UPGRADE

Approved: Facilities Engineering Service Chief  
Approved: Medical Center Director

Building Number  
69

Checked  
RAM

Drawn  
MB/LSP

Date  
MARCH 14, 2012

Project No.  
542-09-102

Drawing No.  
69-E2

Dwg. 19 of 22

DEPARTMENT OF  
VETERANS AFFAIRS