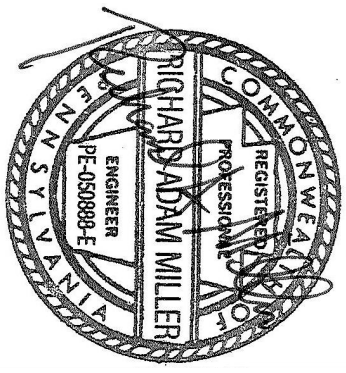



Revisions	Date

**DERBY ENTERPRISES**

ARCHITECTURE  
PLANNING  
ENGINEERING

1201 ENTERPRISE COURT SUITE 102-C1  
DEER PARK, ILLINOIS 60015-1047  
TEL: 410.603.0029 FAX: 410.603.0623



 **bkm**

**Engineering Life Spaces**

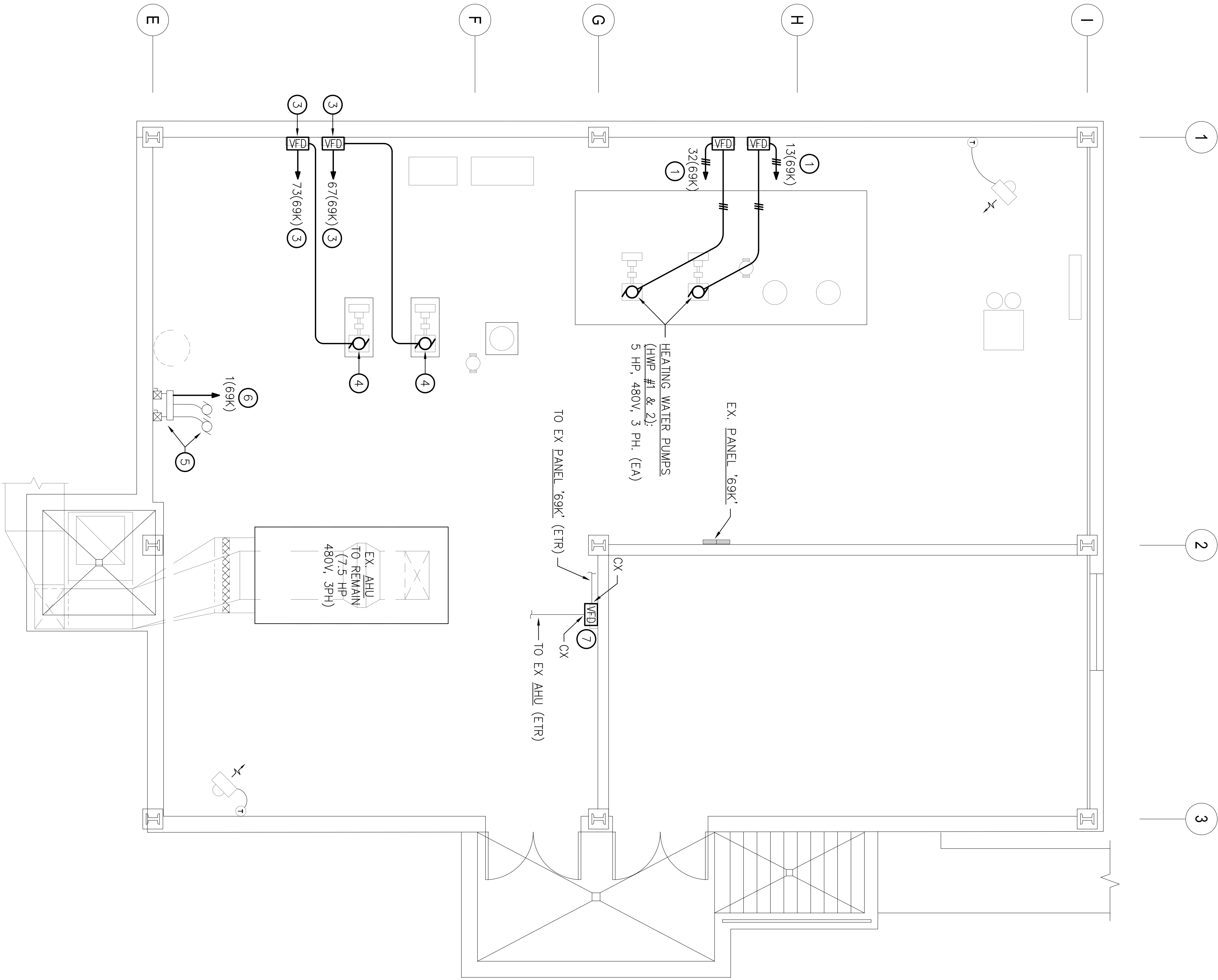
---

**Burdette, Koehler, Murphy & Associates, Inc.**  
Mechanical/Electrical Consulting Engineers

1423 Clarkinway Road  
Suite 500  
Baltimore, Maryland 21210

p: 410.323.0600  
f: 410.317.2543  
www.bkma.com

Drawing Title <b>BASEMENT FLOOR PLAN POWER – NEW WORK</b>	Project Title		Date
	BUILDING 69 HVAC UPGRADE		MARCH 14, 2012
Approved: Facilities Engineering Services Chief	Building Number	Checked	Project No.
	69	LSP/RAH	542-09-102
Approved: Medical Center Director	Location	Drawing No.	
	COATESVILLE, PENNSYLVANIA	69-E4	
Dwg. 21 of 22			



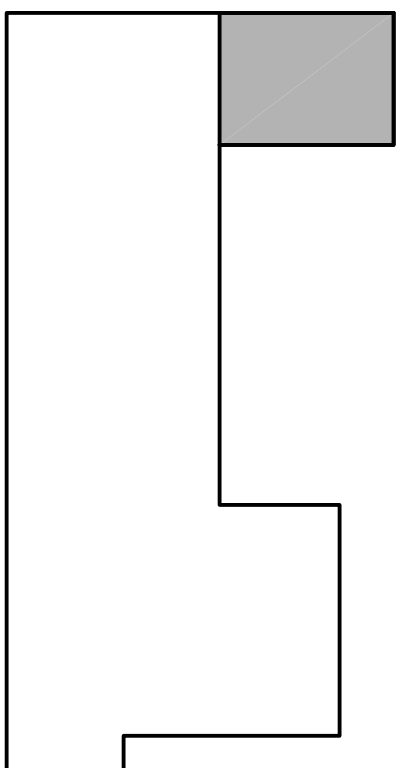
EX. PANEL: 69K		RATING: 400		AMPS MAIN: M.L.O.		VOLTAGE: 480 V, 277 V		3 PH, 4 W			
A/C: 14K		MOUNTING: SURFACE				NOTE: GE A-SERIES					
LOCATION: MECHANICAL ROOM				REVISED CONNECTIONS							
OKT	EQUIPMENT SERVED	LOAD (KVA)			CB	BUS	CB	LOAD (KVA)		EQUIPMENT SERVED	OKT
		A#	B#	C#				A#	B#	C#	
1	SUMP PUMP (ETR)	4.2	4.2		30	A B C	30			SPARE	2
3					20		20				4
7	SPARE				20		20			SPARE	6
9					20		20			SPARE	8
11					20		20			SPARE	10
13	PUMP HWP-1	21	21		20		20			SPARE	12
15					20		20			SPARE	14
17					20		20			SPARE	16
19	HALLWAY H/V UNIT	1.3	21		20		20			SPARE	18
21					20		20			SPARE	20
23					20		20			SPARE	22
25	SPARE				20		20			AIR COMPRESSOR (ETR)	24
27					20		20			SPARE	26
29					20		20			SPARE	28
31	SPARE (ETR)				20		20			PUMP HWP-2	30
33					20		20			SPARE	32
35					20		20			SPARE	34
37	SPARE (ETR)				20		20			SPARE	36
39					20		20			SPARE	38
41					20		20			SPARE	40
43	SPARE (ETR)				20		20			AHU-MECH. RM. (ETR)	42
45					20		20			SPARE	44
47					20		20			SPARE	46
49	SPARE (ETR)				20		20			L.T.O.-MECH. RM. (ETR)	48
51	SPARE (ETR)				20		20			SPARE (ETR)	50
53	SPARE (ETR)				20		20			SPARE (ETR)	52
55	SPARE (ETR)				20		20			SPARE (ETR)	54
57	SPARE (ETR)				20		20			SPARE (ETR)	56
59	SPARE (ETR)				20		20			SPARE (ETR)	58
61	TESTER OUTLET (ETR)				20		20			SPARE (ETR)	60
63					20		20			SPARE (ETR)	62
65					20		20			SPARE (ETR)	64
67	PUMP CHWP #1	31	31		20		20			SPARE	66
69					20		20			SPARE	68
71					20		20			SPARE	70
73	PUMP CHWP #2				20		20			SPARE	72
75					20		20			SPARE	74
77					20		20			SPARE	76
79	PANEL 69L*	3.9	3.2		20		20			SPARE	78
81					20		20			SPARE	80
83					20		20			SPARE	82
CONNECTED LOAD:											84
14.6 13.9 12.6											
SUB-TOTALS											
8.1 5.1 5.1											

## GENERAL NOTES:

1. REFER TO DRAWING 69-E1 FOR ELECTRICAL LEGEND, ABBREVIATIONS AND GENERAL NOTES.

### DRAWING NOTES:

- ① CONNECT TO EXISTING 20A, 3P CIRCUIT BREAKER INDICATED.
- ② PROVIDE NEW CIRCUIT BREAKER AS INDICATED.
- ③ CONNECT TO CIRCUIT BREAKER INDICATED. EXTEND 3 #12, 1 #12 GW IN 3/4" CONDUIT FROM MOTOR TO YFD & FROM YFD TO PANEL 59C.
- ④ CHILLED WATER PUMPS (CHWP #1 & 2): 7.5 HP, 480V, 3 PH, (E.A).
- ⑤ EX. (2) SLUMP PUMPS, STARTERS & WIRE TROUGH.
- ⑥ CONNECT TO EXISTING 30A, 3P CIRCUIT BREAKER PREVIOUSLY SERVING SLUMP PUMPS. EXTEND 3 #10, 1 #10 GW IN 3/4" CONDUIT & RECONNECT TO EXISTING BRANCH CIRCUIT WIRING WITHIN WIRE TROUGH.
- ⑦ PROVIDE YFD TO CONTROL EXISTING AHU FAN INDICATED. MODIFY EXISTING LINE & LOAD SIDE WIRING AS REQUIRED.



## KEY PLAN

