

three inches = one foot  
one and one half inches = one foot  
one inch = one foot  
three quarters inch = one foot  
one half inch = one foot  
three eighths inch = one foot  
one quarter inch = one foot  
one eighth inch = one foot

G:\MO-Eng-Projects\2018 Projects\18-509 Abote Mold & Asbestos B8 Basement\Design\100% Drawings - Mark.dwg 9-15-17 11:27:26 AM VHCADOWNEM



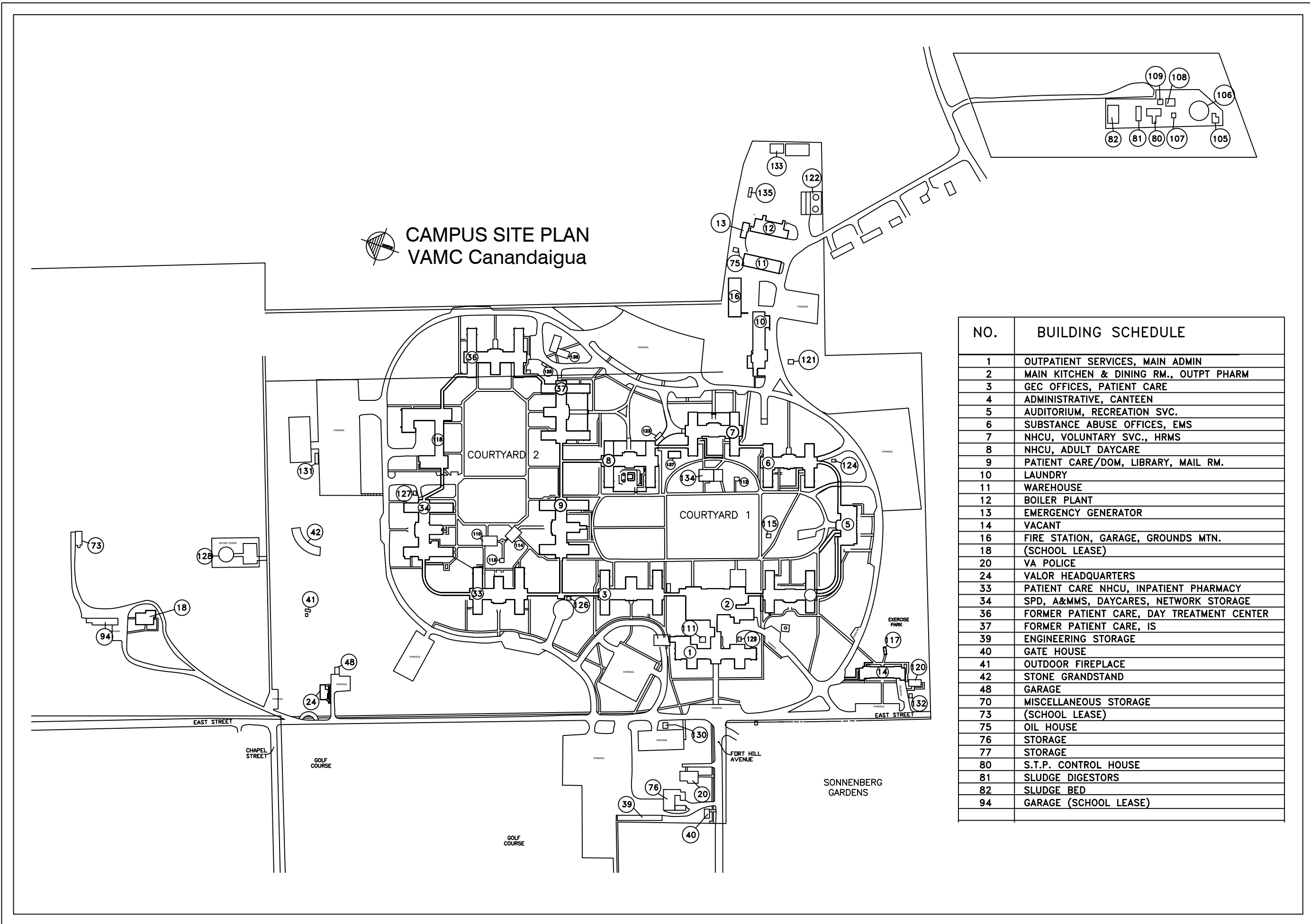
SITE LOCATION  
SCALE: NONE

# MOLD/ASBESTOS REMEDIAATION B8

DEPARTMENT OF VETERANS AFFAIRS  
PROJECT NO. 528-A5-18-509  
BUILDING #8  
CANANDAIGUA, NY



Department of  
Veterans Affairs



NO.	BUILDING SCHEDULE
1	OUTPATIENT SERVICES, MAIN ADMIN
2	MAIN KITCHEN & DINING RM., OUTPT. PHARM
3	SEC OFFICES, PATIENT CARE
4	ADMINISTRATIVE CENTER
5	AUDITORIUM, RECREATION SVC.
6	SUBSTANCE ABUSE OFFICES, LMS
7	INCL. VOLUNTARY SVC. - HHS
8	INCL. ADULT DAYCARE
9	PATIENT CARE/CLIN. LIBRARY, MAIL RM.
10	LAUNDRY
11	WAREHOUSE
12	BOILER PLANT
13	EMERGENCY GENERATOR
14	VACANT
15	FIRE STATION, GARAGE, GROUNDS MTH.
16	VA POLICE
17	(SCHOOL LEASE)
18	VA POLICE
19	VA POLICE
20	VA POLICE
21	VA POLICE
22	VA POLICE
23	VA POLICE
24	VALOR HEADQUARTERS
25	PATIENT CARE INCL. INPATIENT PHARMACY
26	SPS, ANKAMP, DAYCARES, NETWORK STORAGE
27	FORMER PATIENT CARE, DAY TREATMENT CENTER
28	FORMER PATIENT CARE, IS
29	ENGINEERING STORAGE
30	ENGINEERING STORAGE
31	ENGINEERING STORAGE
32	ENGINEERING STORAGE
33	ENGINEERING STORAGE
34	ENGINEERING STORAGE
35	ENGINEERING STORAGE
36	ENGINEERING STORAGE
37	ENGINEERING STORAGE
38	ENGINEERING STORAGE
39	ENGINEERING STORAGE
40	GATE HOUSE
41	OUTDOOR FIREPLACE
42	STONE GRANDSTAND
43	GARAGE
44	GARAGE
45	MISCELLANEOUS STORAGE
46	(SCHOOL LEASE)
47	GIL HOUSE
48	STORAGE
49	STORAGE
50	STORAGE
51	STORAGE
52	STORAGE
53	STORAGE
54	STORAGE
55	STORAGE
56	STORAGE
57	STORAGE
58	STORAGE
59	STORAGE
60	STORAGE
61	STORAGE
62	STORAGE
63	STORAGE
64	STORAGE
65	STORAGE
66	STORAGE
67	STORAGE
68	STORAGE
69	STORAGE
70	STORAGE
71	STORAGE
72	STORAGE
73	STORAGE
74	STORAGE
75	STORAGE
76	STORAGE
77	STORAGE
78	STORAGE
79	STORAGE
80	STORAGE
81	STORAGE
82	STORAGE
83	STORAGE
84	STORAGE

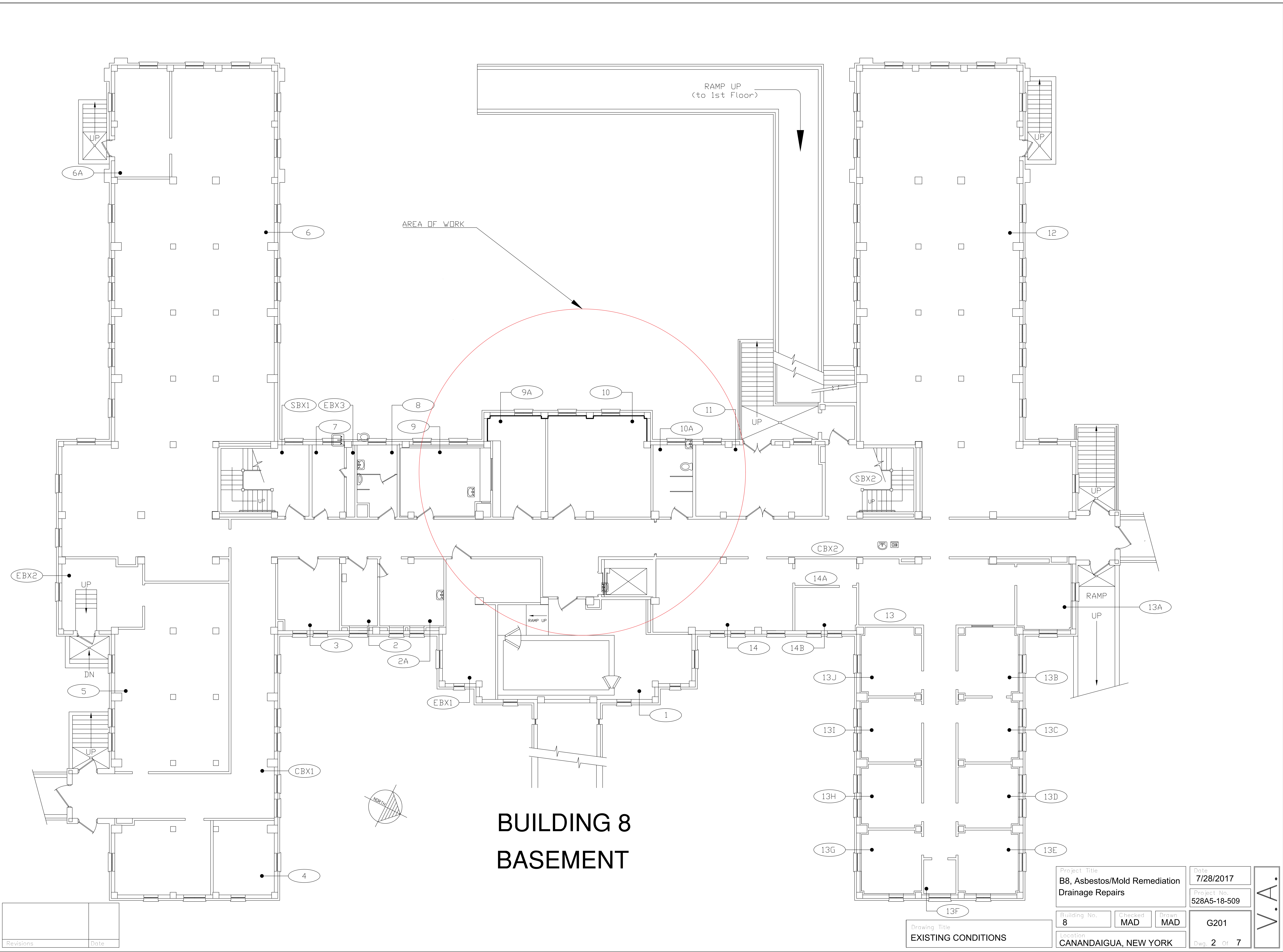
SITE PLAN  
SCALE: NONE

## DRAWING INDEX

DISCIPLINE/ SHEET NO.	DESCRIPTION
G101	COVER SHEET AND DRAWING INDEX
G201	EXISTING CONDITIONS
G301	INTERIOR DEMOLITION & RECONSTRUCTION
A101	EXTERIOR ELEVATION VIEW
C101	TRENCH PLAN VIEW
P101	DRAINAGE TILE DETAILS
P201	NEW STORM LINE INSTALL

Revisions:	Date:	CONSULTANT	ARCHITECT/ENGINEER OF RECORD	STAMP	Office of Construction and Facilities Management  VA U.S. Department of Veterans Affairs	Drawing Title Cover Sheet and Drawing Index  Approved:	Phase 100% DESIGN  NOTE: USERS OF THESE DRAWINGS ARE RESPONSIBLE FOR VERIFYING EXISTING DIMENSIONS AND CONDITIONS IN THE FIELD	Project Title B8, Mold & Asbestos Remediation and Drainage Repairs  Location Canandaigua, NY  Issue Date 28 July 2017	Checked MAD	Drawn MAD	Project Number 528A5-18-509  Building Number 8  Drawing Number G101 Dwg. 1 Of 7
------------	-------	------------	------------------------------	-------	--	---	---	---	----------------	--------------	---





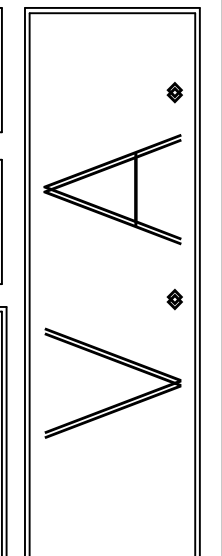
BUILDING 8  
BASEMENT

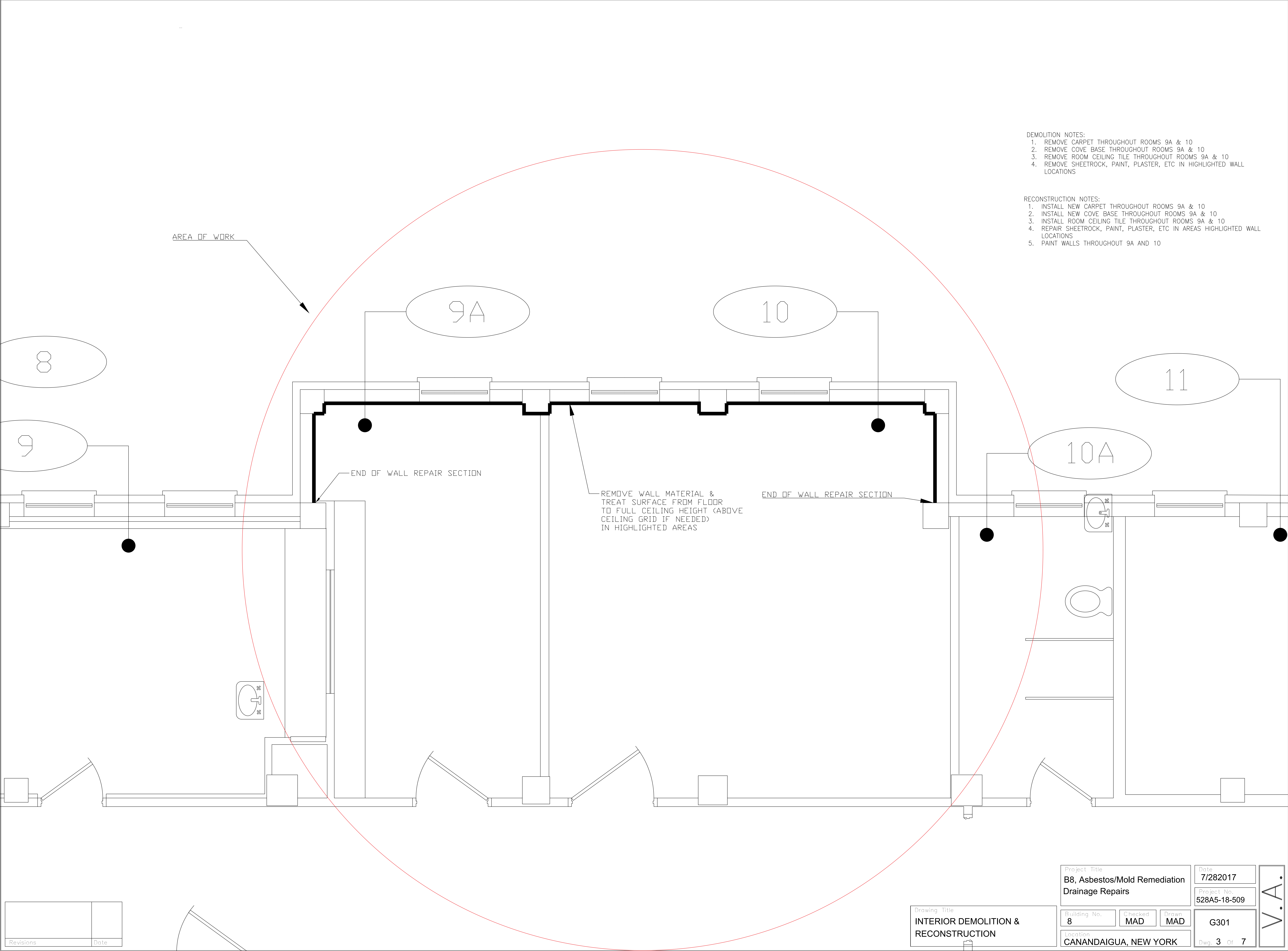
Revisions	Date

Drawing Title  
EXISTING CONDITIONS

Project Title B8, Asbestos/Mold Remediation Drainage Repairs		
Building No. 8	Checked MAD	Drawn MAD
Location CANANDAIGUA, NEW YORK		

Date 7/28/2017
Project No. 528A5-18-509
G201
Dwg. 2 Of 7





- DEMOLITION NOTES:
- 1. REMOVE CARPET THROUGHOUT ROOMS 9A & 10
  - 2. REMOVE COVE BASE THROUGHOUT ROOMS 9A & 10
  - 3. REMOVE ROOM CEILING TILE THROUGHOUT ROOMS 9A & 10
  - 4. REMOVE SHEETROCK, PAINT, PLASTER, ETC IN HIGHLIGHTED WALL LOCATIONS

- RECONSTRUCTION NOTES:
- 1. INSTALL NEW CARPET THROUGHOUT ROOMS 9A & 10
  - 2. INSTALL NEW COVE BASE THROUGHOUT ROOMS 9A & 10
  - 3. INSTALL ROOM CEILING TILE THROUGHOUT ROOMS 9A & 10
  - 4. REPAIR SHEETROCK, PAINT, PLASTER, ETC IN AREAS HIGHLIGHTED WALL LOCATIONS
  - 5. PAINT WALLS THROUGHOUT 9A AND 10

Revisions	Date

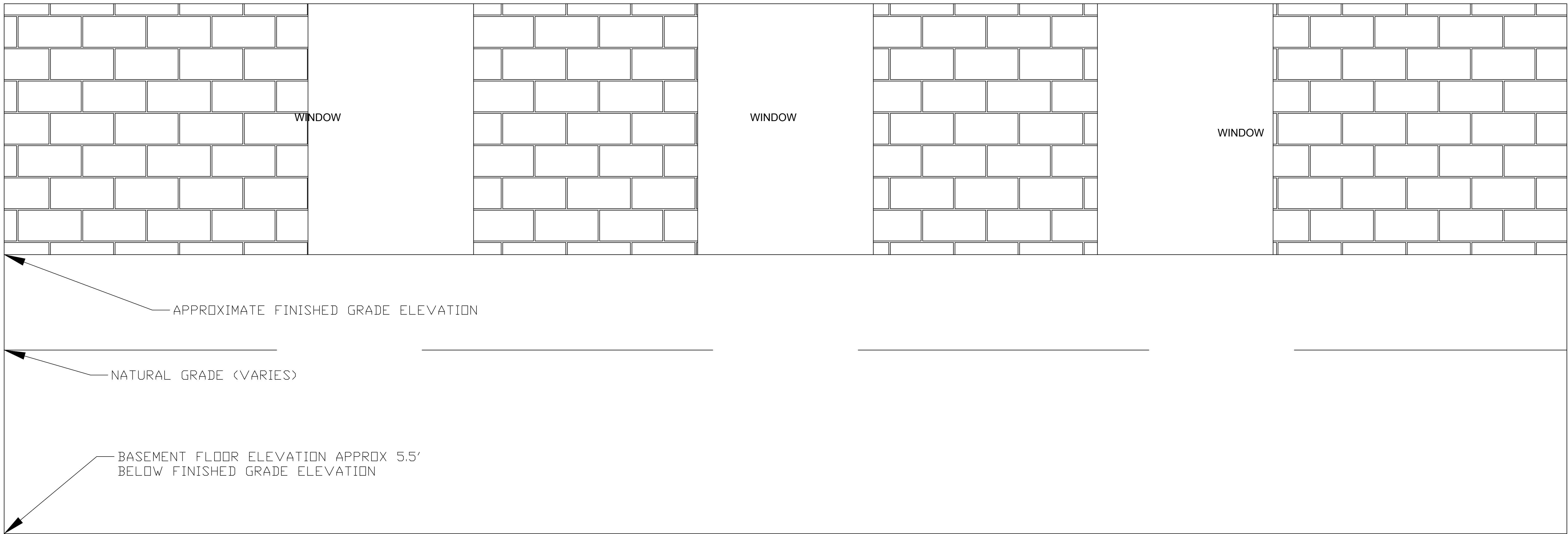
Drawing Title
INTERIOR DEMOLITION & RECONSTRUCTION

Project Title	
B8, Asbestos/Mold Remediation Drainage Repairs	
Building No.	8
Location	CANANDAIGUA, NEW YORK

Date	7/282017
Project No.	528A5-18-509
Checked	MAD
Drawn	MAD
G301	
Dwg.	3 Of 7

V.A.

EXTERIOR ELEVATION VIEW



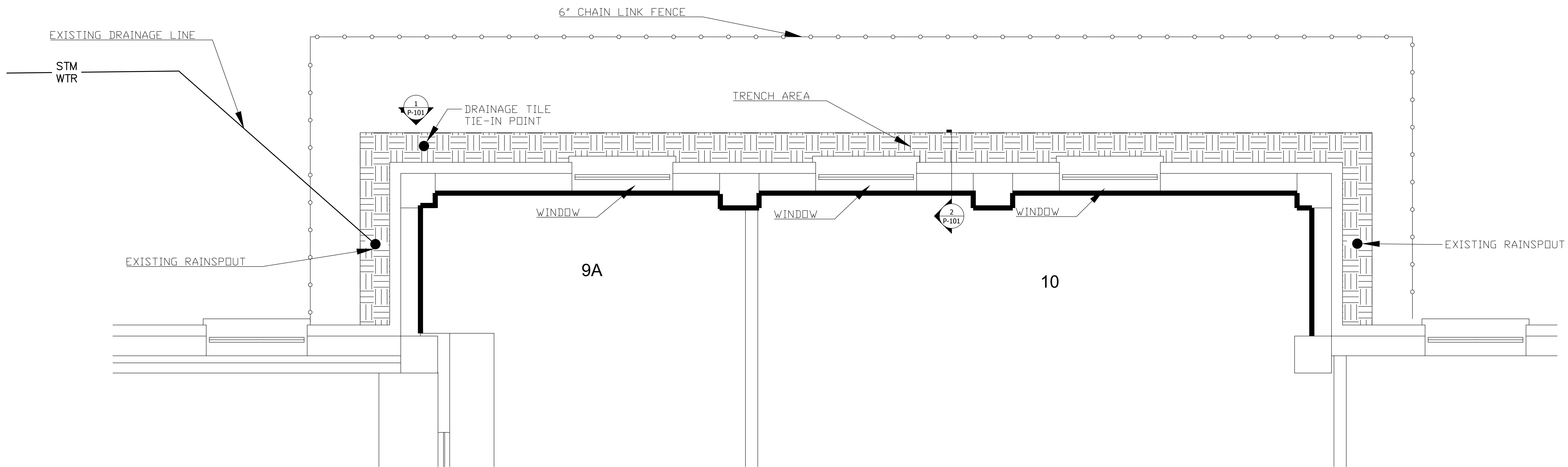
Revisions	Date

Drawing Title
EXTERIOR ELEVATION VIEW

Project Title	7/28/2017
B8, Asbestos/Mold Remediation Drainage Repairs	
Building No.	Checked MAD
8	Drawn MAD
Location	A101
CANANDAIGUA, NEW YORK	

Project No.	528A5-18-509
Dwg.	4 Of 7

W.A.



1 TRENCH PLAN VIEW  
C-101 SCALE: 3/4"=1'

SHEET NOTES:

1. CHAIN LINK FENCE TO BE IN PLACE PRIOR TO WORK START.

LEGEND:

STM WTR EXISTING DRAIN LINE

TRENCH

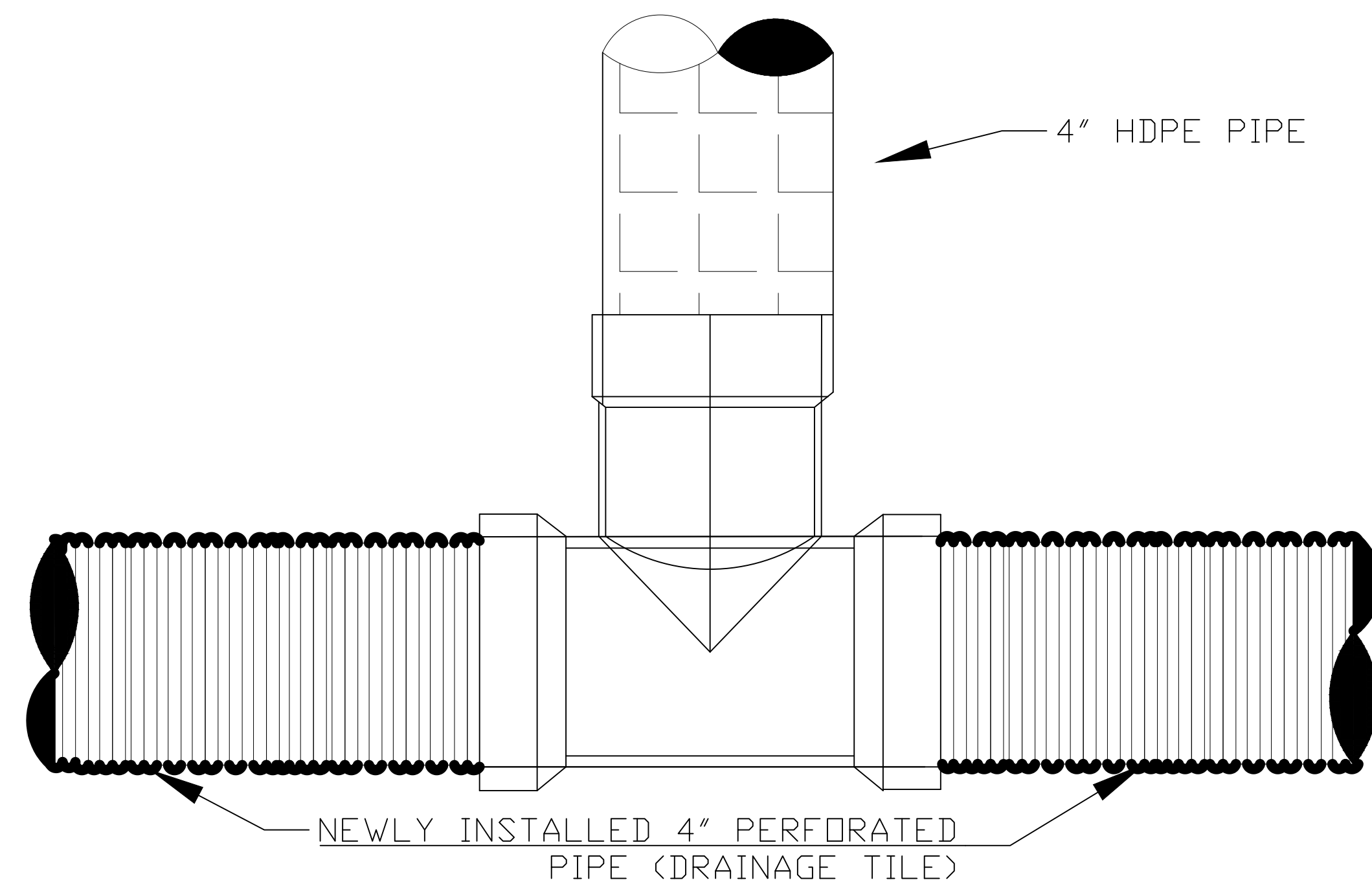
Revisions	Date

Drawing Title  
TRENCH PLAN VIEW

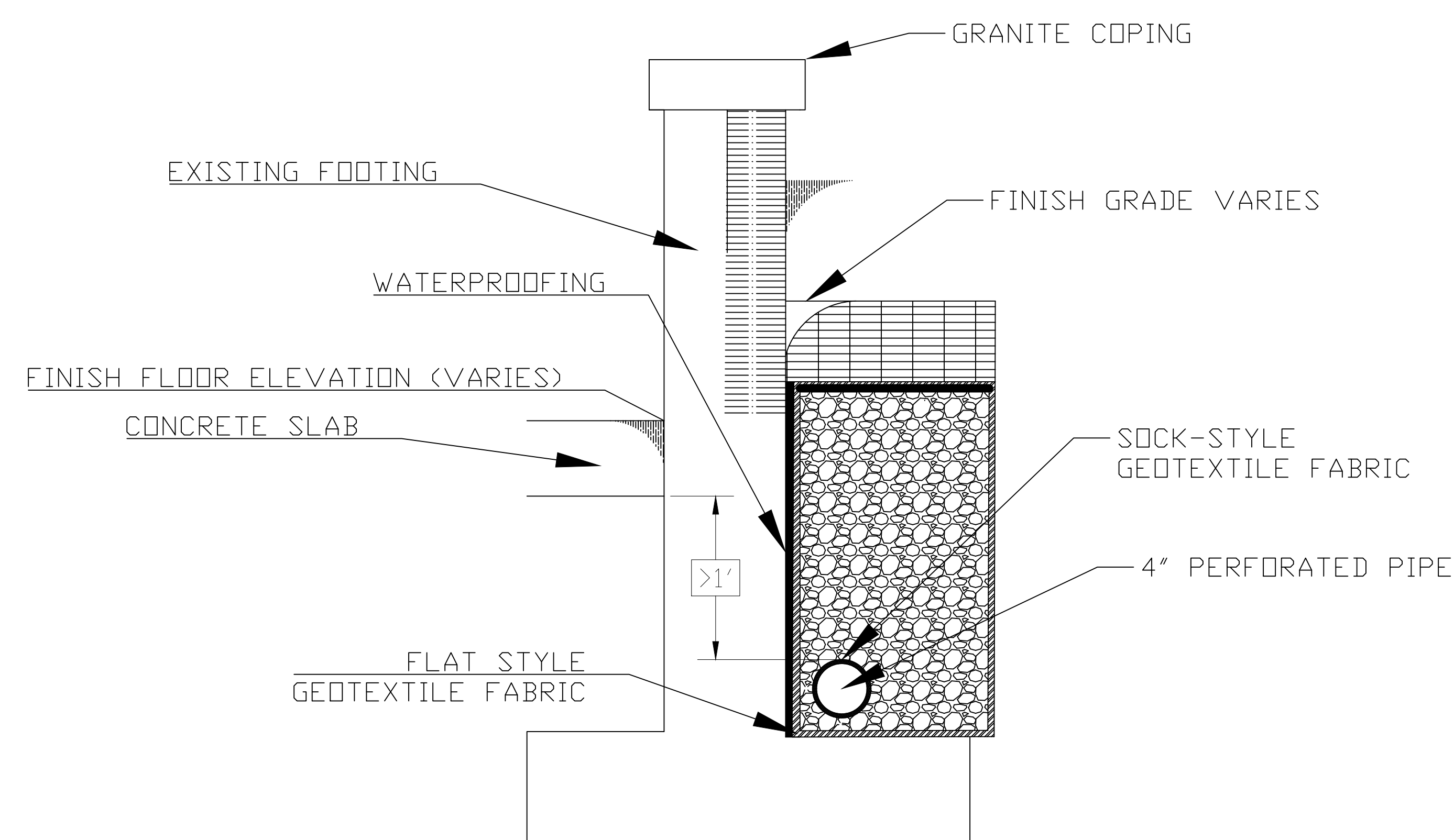
Project Title B8, Asbestos/Mold Remediation Drainage Repairs			Date 7/28/2017
Building No. 8	Checked MAD	Drawn MAD	Project No. 528A5-18-509
Location CANANDAIGUA, NEW YORK			C101

Dwg. 5 Of 7

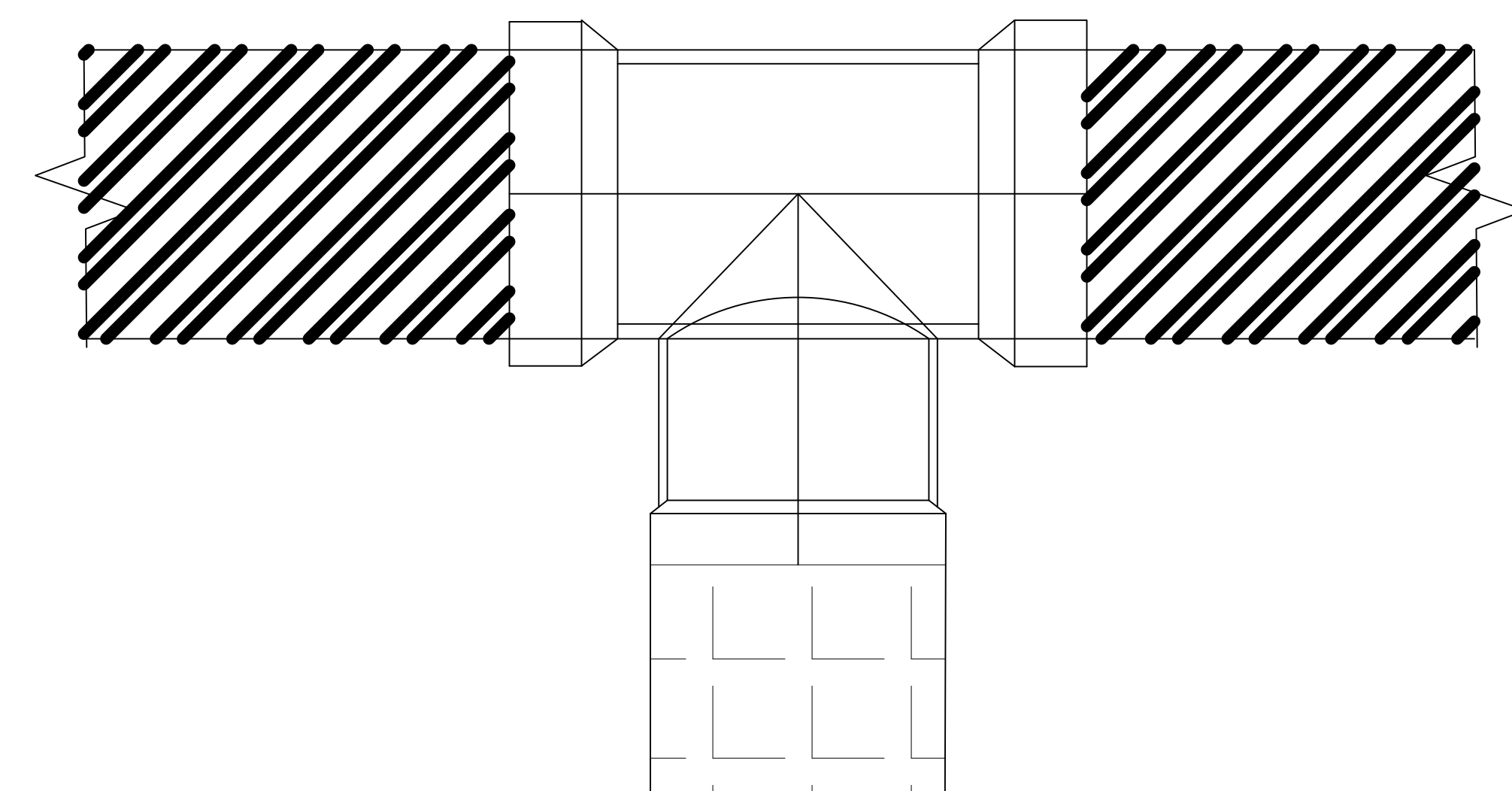
V.A.



1 DRAINAGE TIE IN DETAIL  
C-101 SCALE: 6"=1'



2 TRENCH AND DRAINAGE SECTION DETAIL  
C-101 SCALE: 3"=1'

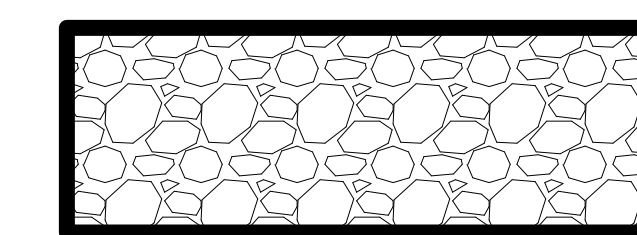


3 NEW STORM LINE TIE-IN SECTION DETAIL  
P-201 SCALE: 6"=1'

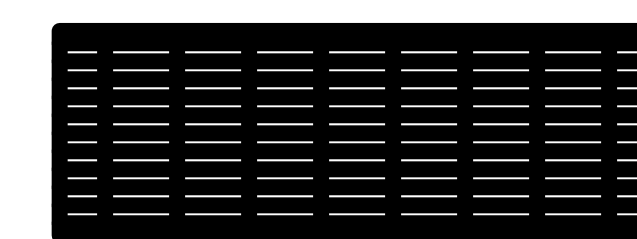
#### DETAIL NOTES:

1. PLACE 1" SPACE BELOW 4" PERFORATED PIPE AND ON THE BUILDING SIDE OF THE PERFORATED PIPE.
2. INSTALL WATERPROOFING ALONG ENTIRE EXPOSED CONCRETE/BRICK PORTION OF FOOTER
3. INSTALL HDPE FITTING AT PERFORATED PIPE CONNECTION LOCATION SHOWN ON DRAWINGS. CONNECT TO PERFORATED PIPE.
4. DISTANCE BETWEEN TOP OF PERFORATED PIPE AND BOTTOM OF BASEMENT SLAB MUST BE > 1' AS SHOWN IN DETAIL 2

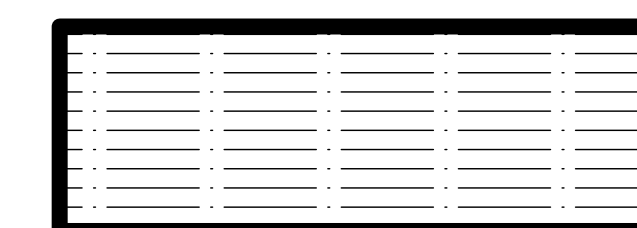
#### LEGEND:



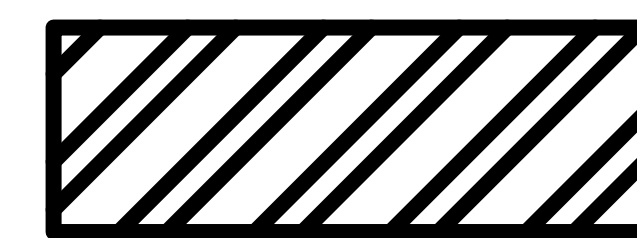
1" WASHED GRAVEL



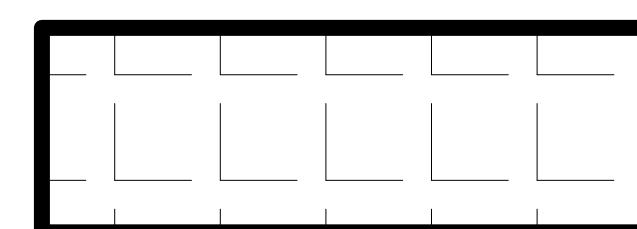
TOPSOIL



EXISTING BRICK



EXISTING BLACK IRON



4" HDPE PIPE

Revisions	Date

Drawing Title  
DRAINAGE TILE DETAILS

Project Title  
B8, Asbestos/Mold Remediation  
Drainage Repairs

Date  
7/28/2017  
Project No.  
528A5-18-509

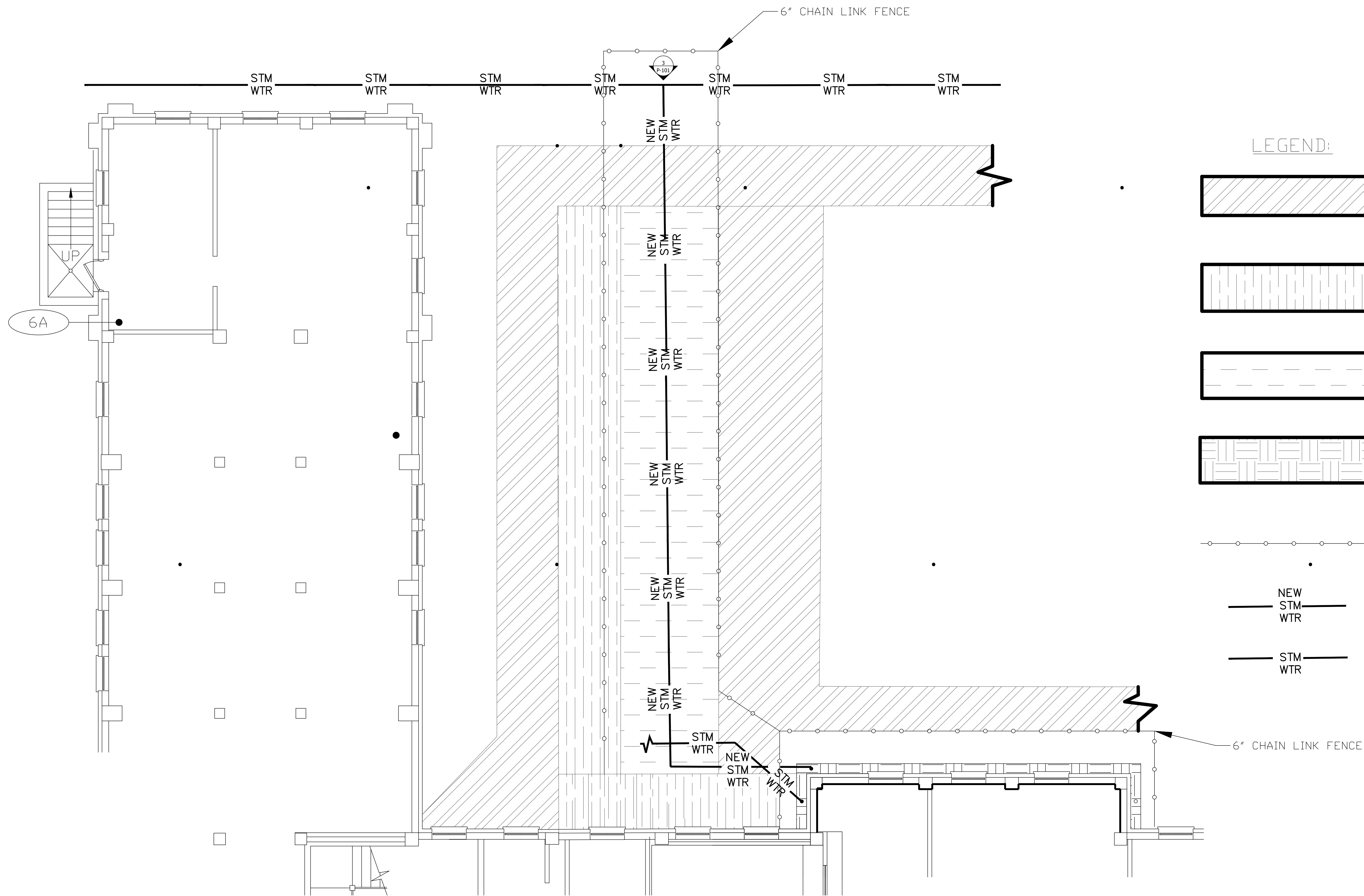
Building No.  
8  
Location  
CANANDAIGUA, NEW YORK

Checked  
MAD  
Drawn  
MAD

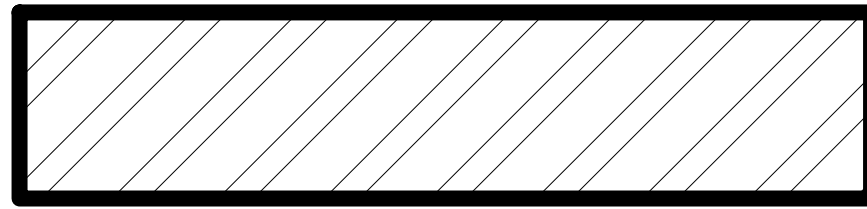
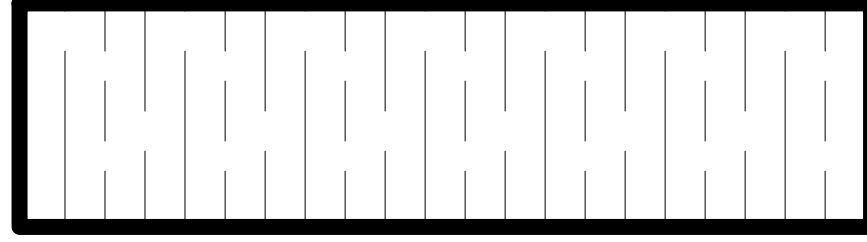
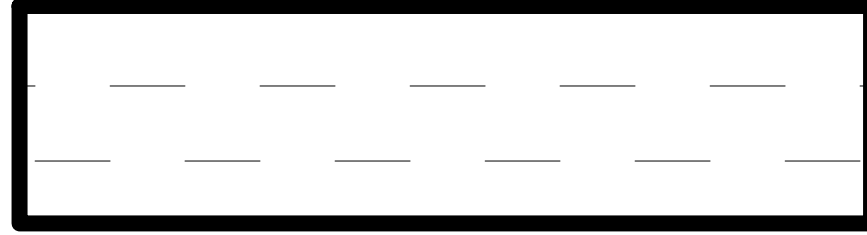
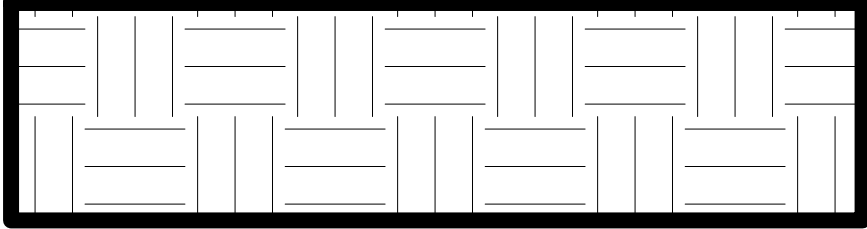
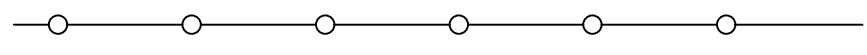


P101

Dwg. 6 Of 7

V.A.



LEGEND:

-  CONCRETE
-  RAISED BED
-  GRASS
-  TRENCH
-  CHAIN LINK FENCE
-  NEW STM WTR
-  STM WTR

SHEET NOTES:

1. STORM WATER LINE RUN IS TO BE PLACED IN THE MIDDLE OF THE GRASSED AREA AS SHOWN

1 NEW STORM DRAIN LINE PLAN VIEW  
P-101 SCALE: 1/4"=1'

Revisions	Date

Drawing Title  
NEW STORM LINE INSTALL

Project Title B8, Asbestos/Mold Remediation Drainage Repairs			Date 7/28/2017
Building No. 8	Checked MAD	Drawn MAD	Project No. 528A5-18-509
Location CANANDAIGUA, NEW YORK			P201

Dwg. 7 Of 7

V.A.