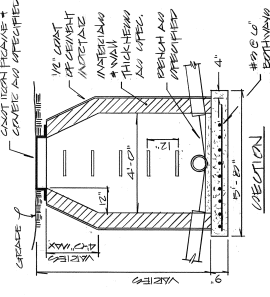
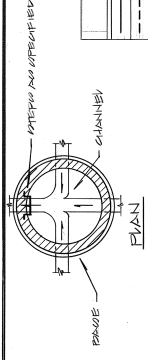
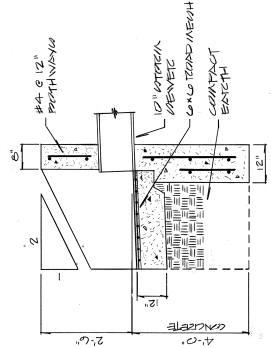


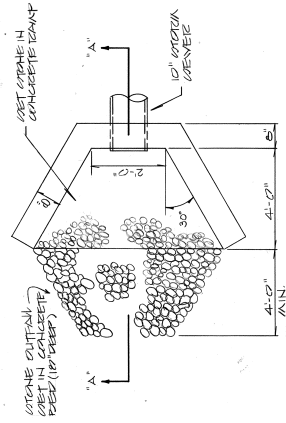
PLUMBING SYMBOL SCHEDULE	
--- SANITARY WASTE	
--- SANITARY VENT	
--- LOTION	
--- F- FICE VINE	
--- F- FICE OFFICER LINE	
--- G- GAO VINE	
--- G- GAO WATER	
--- HOT WATER	
--- HOT WATER RETURN	
--- GATE VALVE (NEW)	
--- GATE VALVE	
--- ANGLE VALVE	
--- CHECK VALVE	
--- BALL VALVE	
--- PRESSURE-TEMPERATURE RELIEF	
--- WATER FLOW SWITCH	
--- VALVE IN TUBERC	
--- FICE DEPARTMENT CONNECTION	
--- BACKFLOW PREVENTER	
--- GAO VALVE	
--- CONNECTION DRAINING + SHUT OFF	
--- RELIEF VALVE	
--- TIGHT DRAIN - (R.D.)	
--- FLOOR DRAIN - (R.D.)	
--- PLUMB DRAIN - (R.D.)	
--- RUNNING TRAP	
--- CLEANOUT - EXPOSED	
--- CLEANOUT - FLOOR W/ FINISHED FLOOR	
--- UNION	
--- PIPE ANCHOR	
--- EXPANSION JOINT	
--- OTICANER	
--- OUTSIDE GLEEN + YAKE VALVE (NEW)	
--- PRESSURE GAGE W/ GASK	
--- THERMOMETER	
--- WASH HYDRANT	
--- CAP	
--- ELL UP	
--- ELL DOWN	
--- TEE UP	
--- TEE DOWN	
--- NEW CONNECTION TO EXISTING	
--- VENT THRU TRAP	
--- UNDER SIDE	
--- DRAIN CONDUCOR	
--- VERTICAL DRAIN CONDUCOR	
--- VENT THRU TRAP	
--- GAO WATER	
--- HOT WATER	
--- HOT WATER RETURN	
--- VALVE	
--- VENT	
--- WASTE VENT	
--- MANHOLE (NEW)	
--- INDICATOR POST & VALVE	



MANHOLE DETAIL  
NO SCALE



SECTION "A-A"

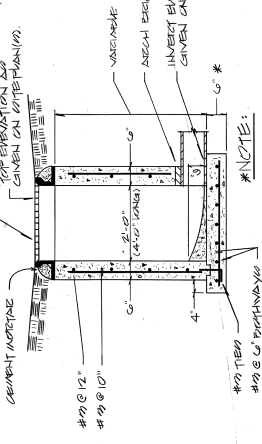


PLAN

ENDWALL DETAIL  
NO SCALE



SITE PLAN  
1" = 30'-0"



CATCH BASIN DETAIL  
NO SCALE

<b>Veterans Administration</b> Project Title: CENTRAL LAUNDRY FACILITY Facility: VETERANS ADMINISTRATION MED CENTER Building Number: 32 Location: HOSPITAL DRIVE V.A.M.C. PITTSBURGH (MD) PA.		Date: 6-1-74 Project No: 645-017 Drawing No: 32-W-2 Date: 6-1-74
<b>SITE PLAN &amp; DETAILS</b> Approved: <i>[Signature]</i> Project Director:		Drawn: R.E.B. Checked: H.B.B.
DODSON ENGINEERING, INC. 301 NORTH AVENUE PITTSBURGH, PA. 15222 (412) 281-5505 (412) 281-5505	CARL G. BAKER CORPORATION 1010 NORTH AVENUE PITTSBURGH, PA. 15222 (412) 281-5505 (412) 281-5505	BRACE ENGINEERING, INC. 1010 NORTH AVENUE PITTSBURGH, PA. 15222 (412) 281-5505 (412) 281-5505