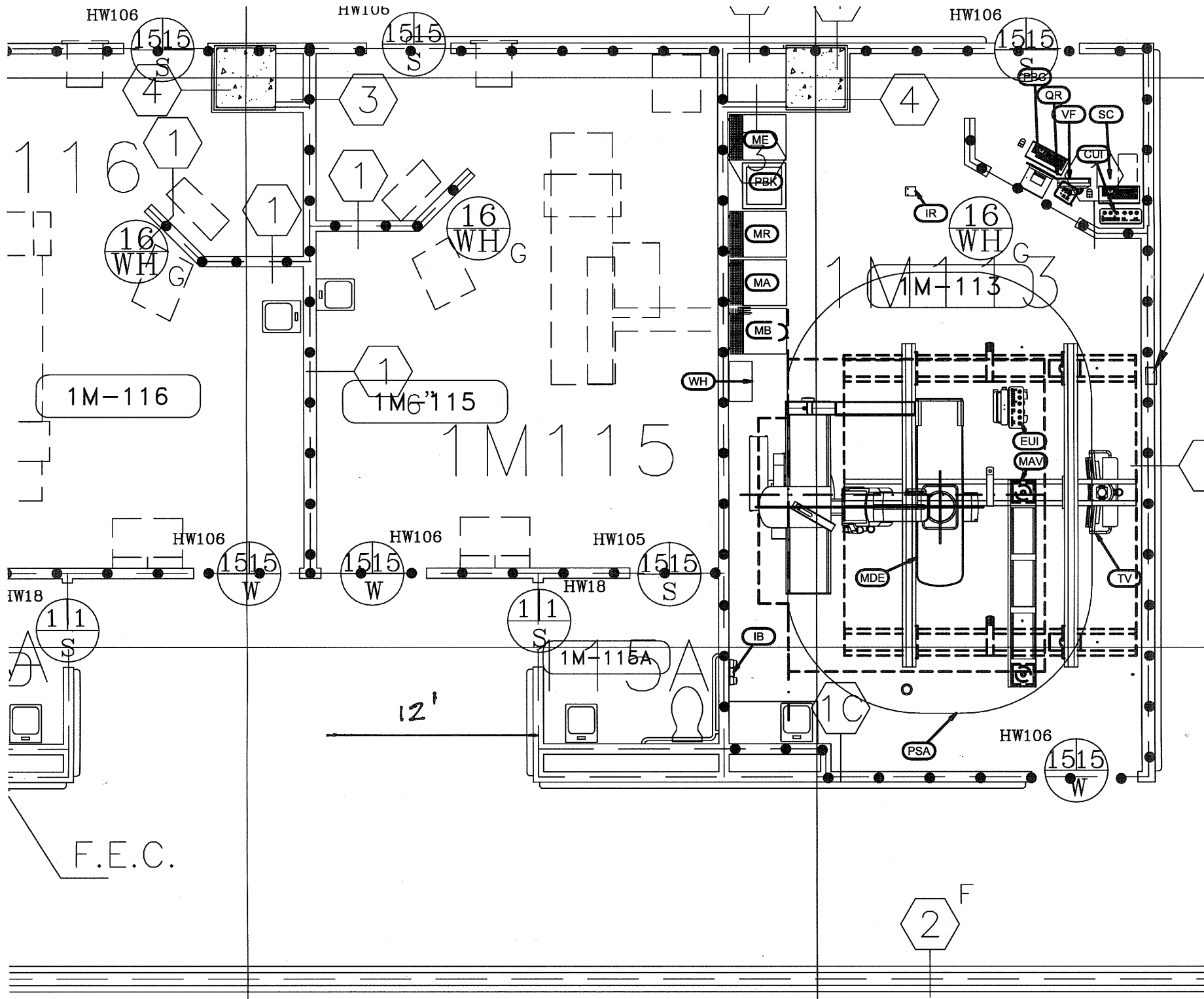


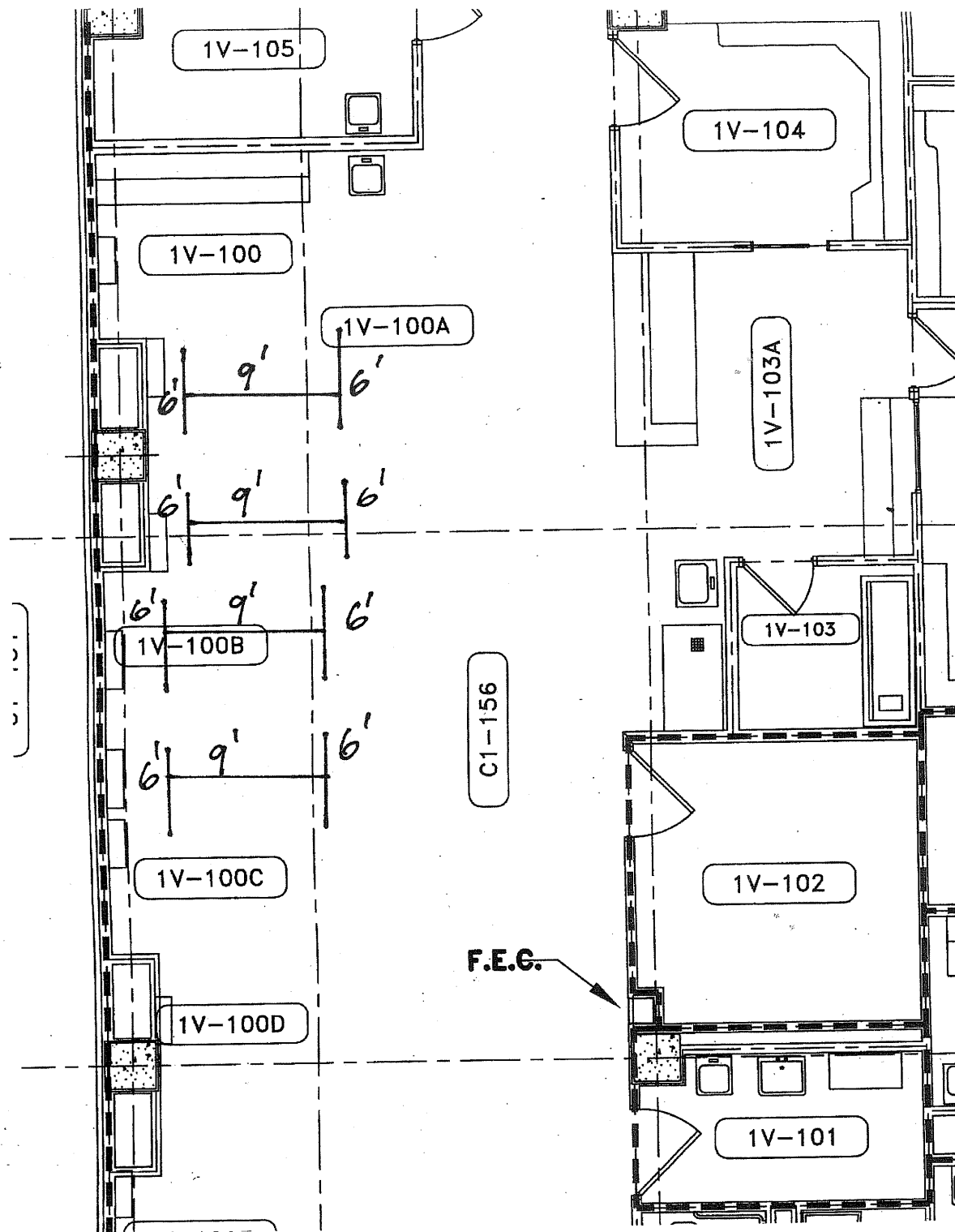
### **Project# 12-114 Safe Patient Handling - Phase 3**

The PDF drawings furnished by the VA are provided for bidding purposes only and are not to be used as construction documents.

These are conceptual layout drawings and are not to scale.

The layout drawings are provided as the overall intent of the VA's requirements. They provide the lift orientation and room coverage locations as determined by the VA Engineering Project Manager. As a Design-Build (D-B) project, the Contractor shall ultimately design each ceiling lift to each space to provide the optimum coverage. This may require a substantially different design or orientation than the layout drawings provided.





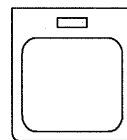
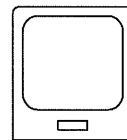
1V-107C

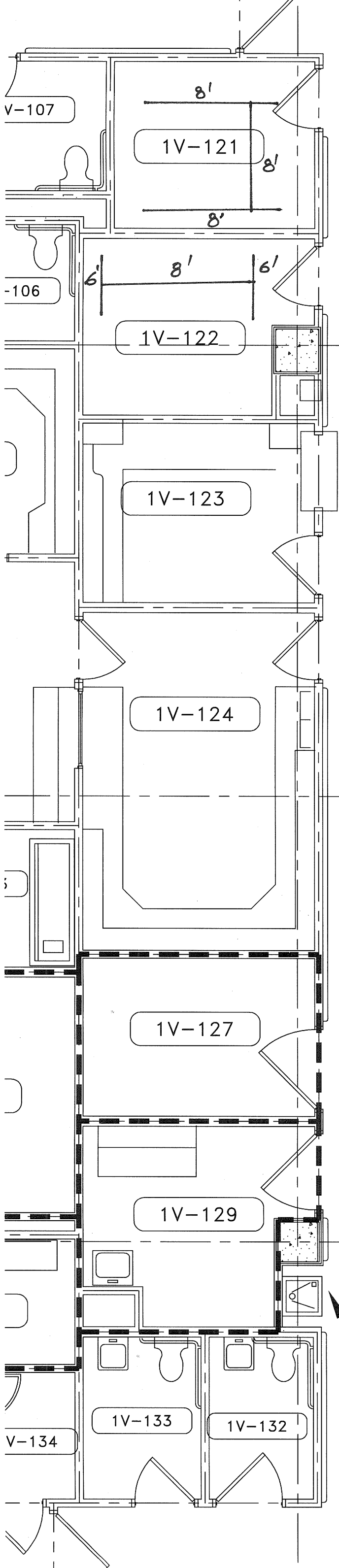
1V-105

6'

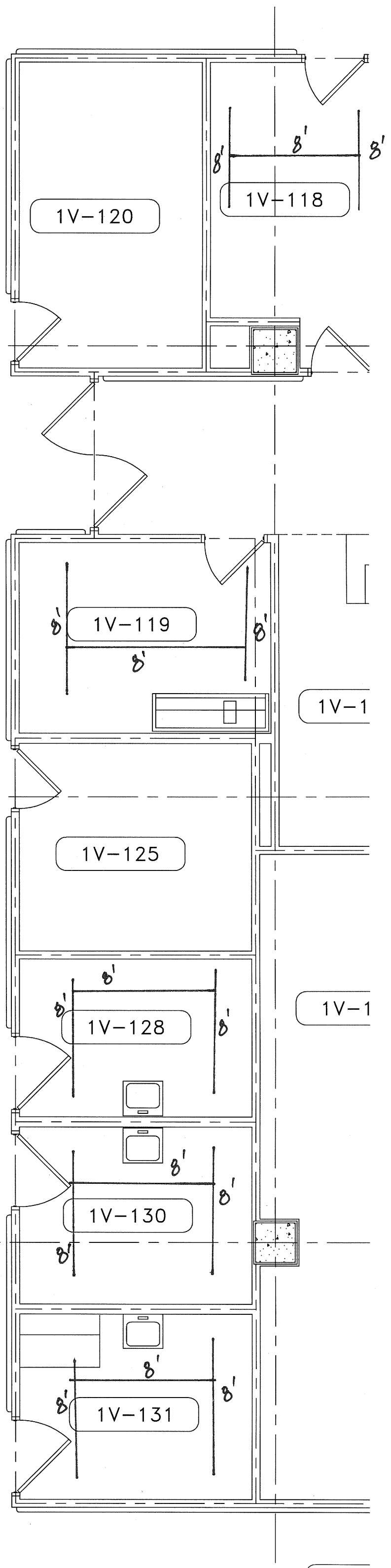
7'

6'

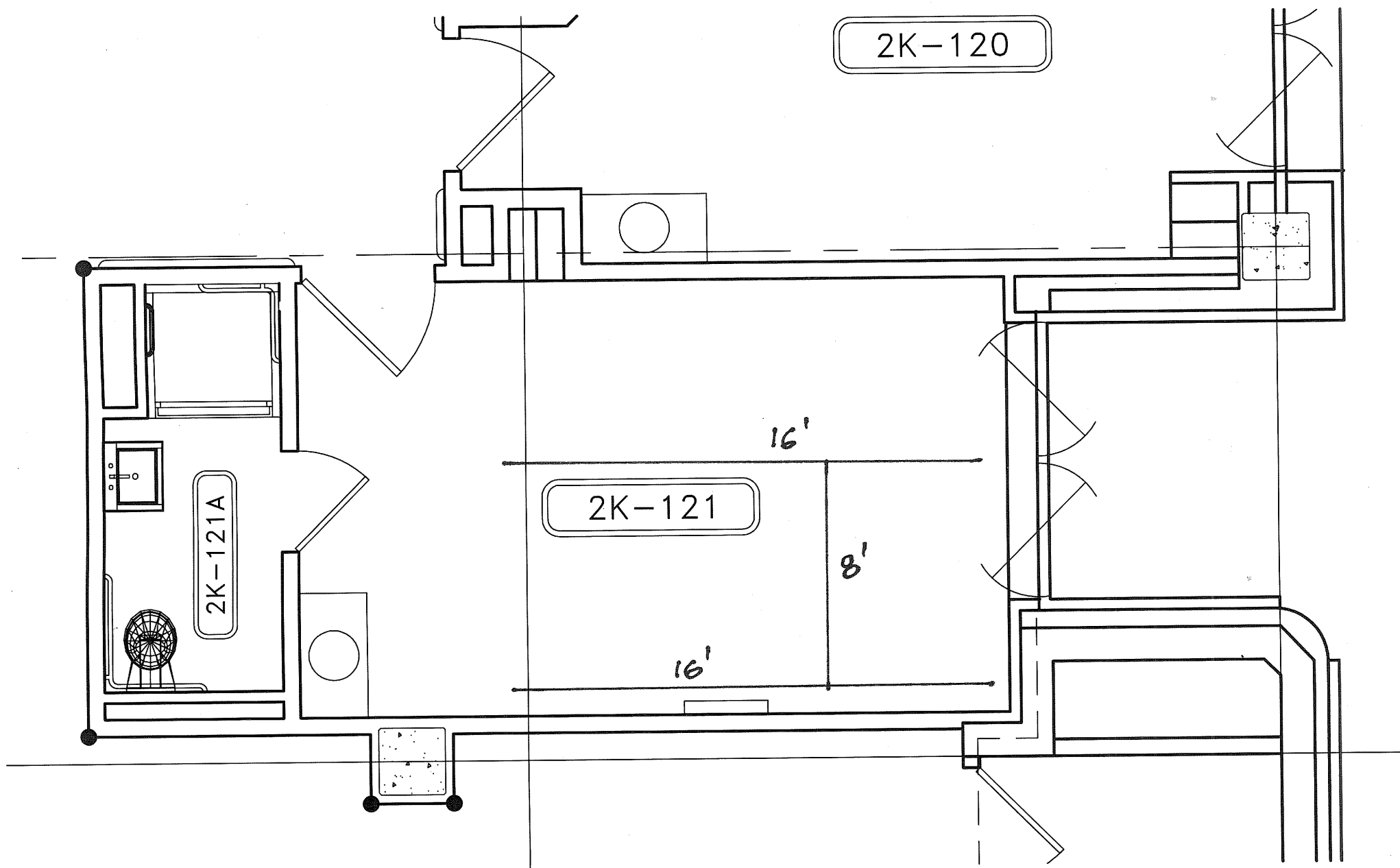


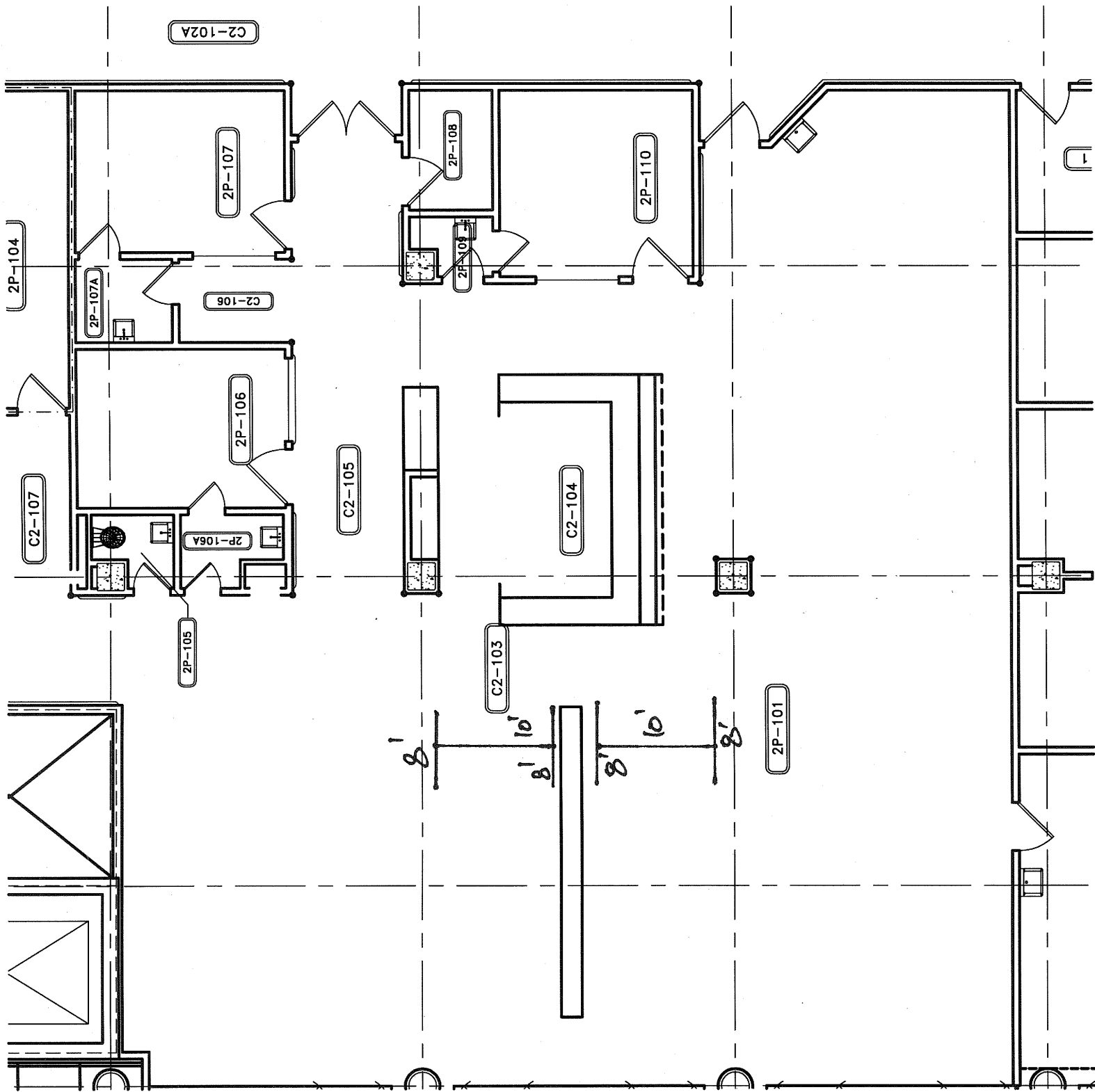


C1-175

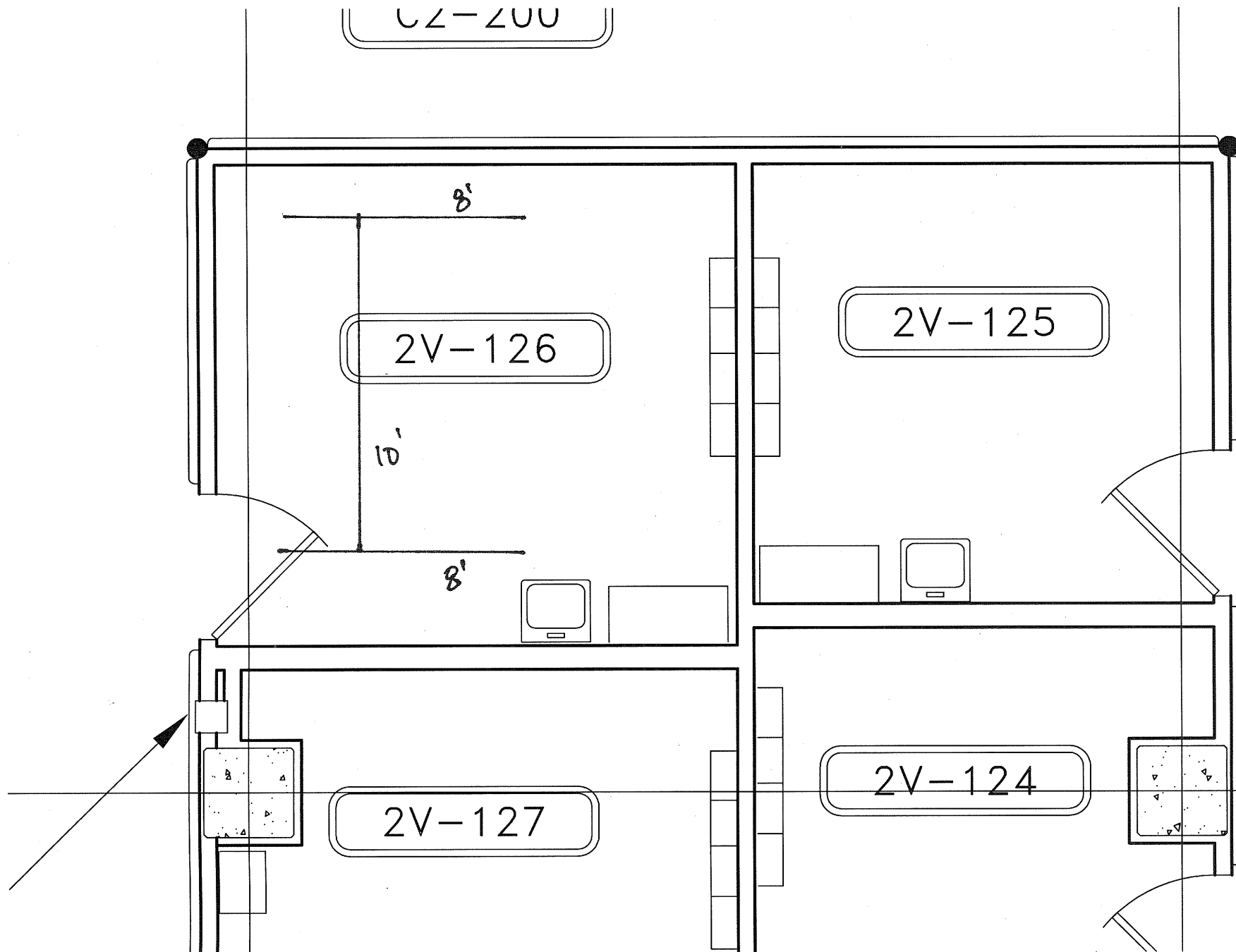


D.F.

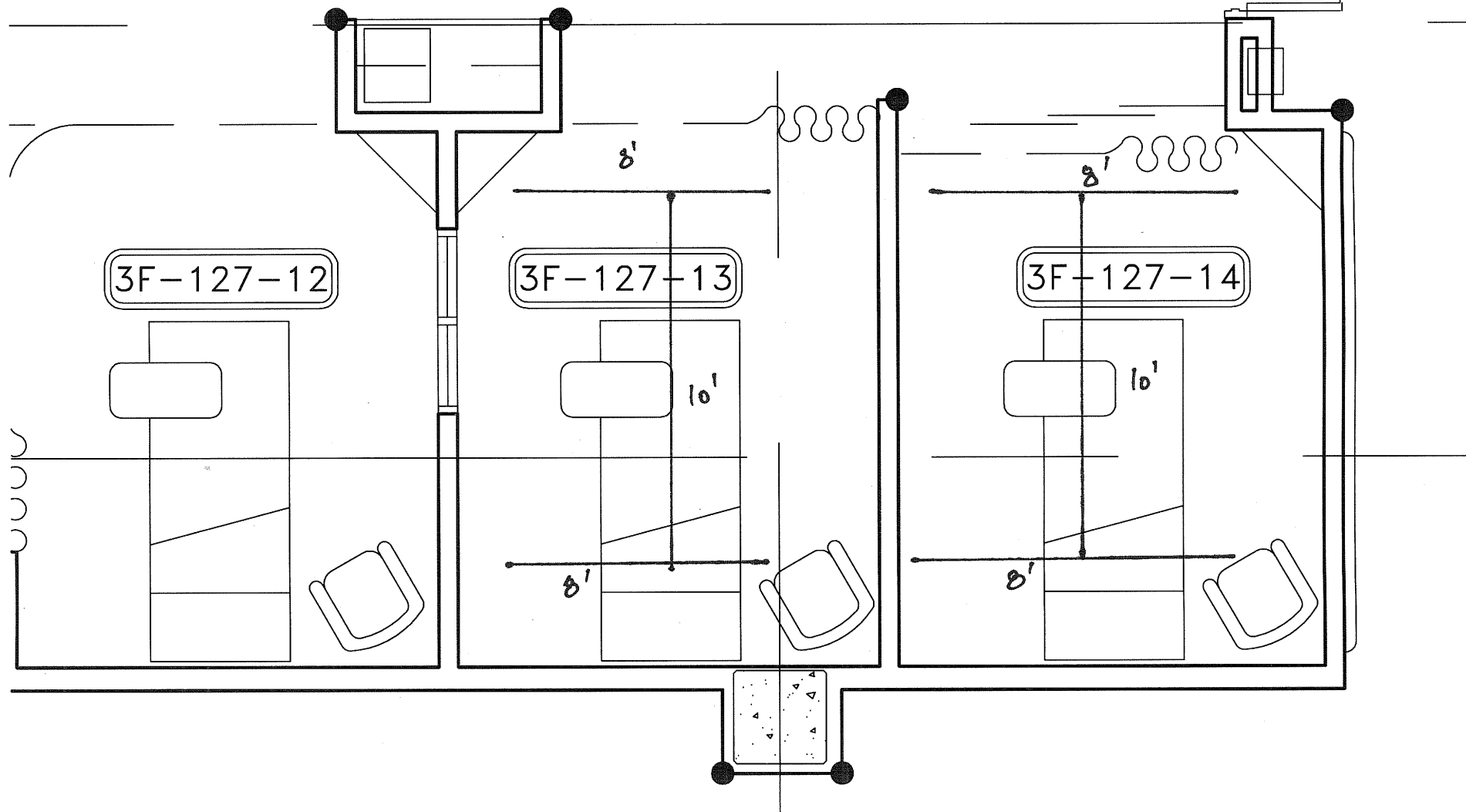
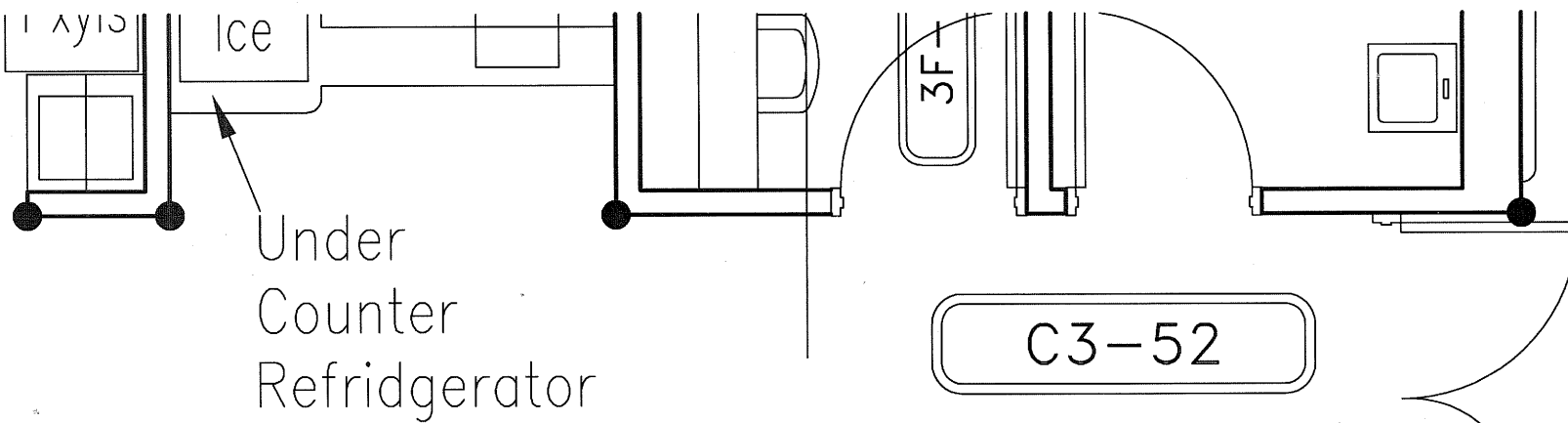


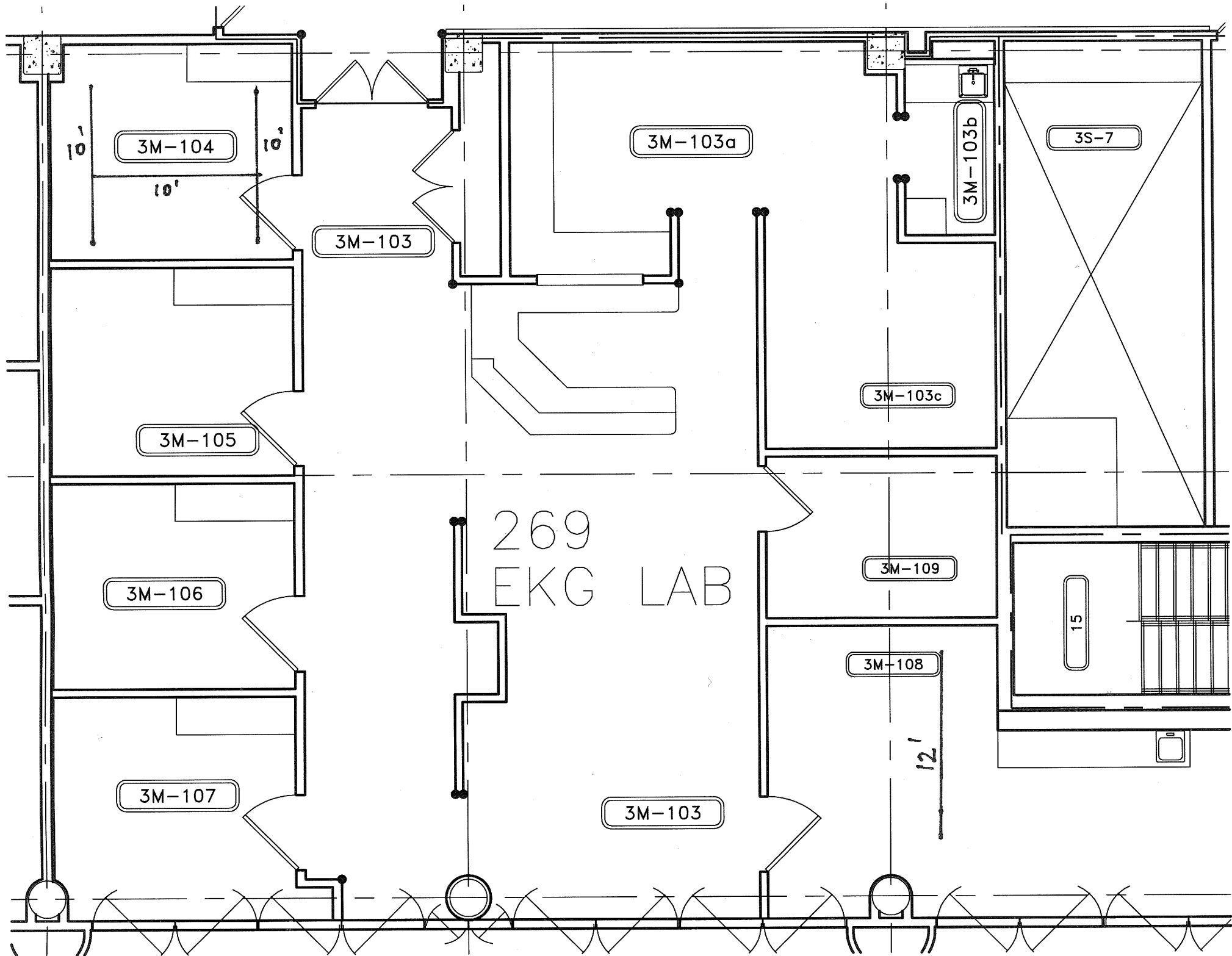


CZ-200









3R-136

3R-135

3R-137

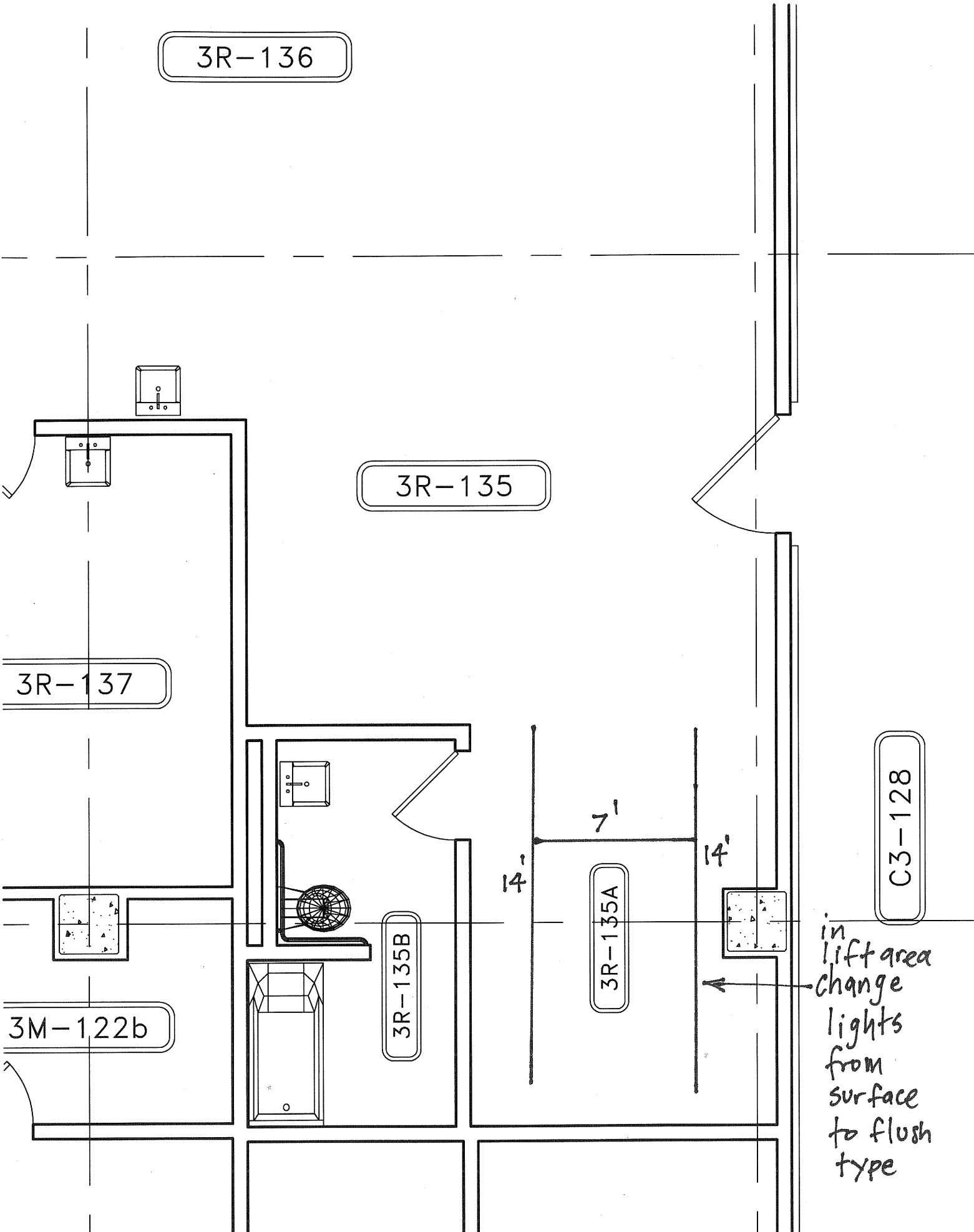
3M-122b

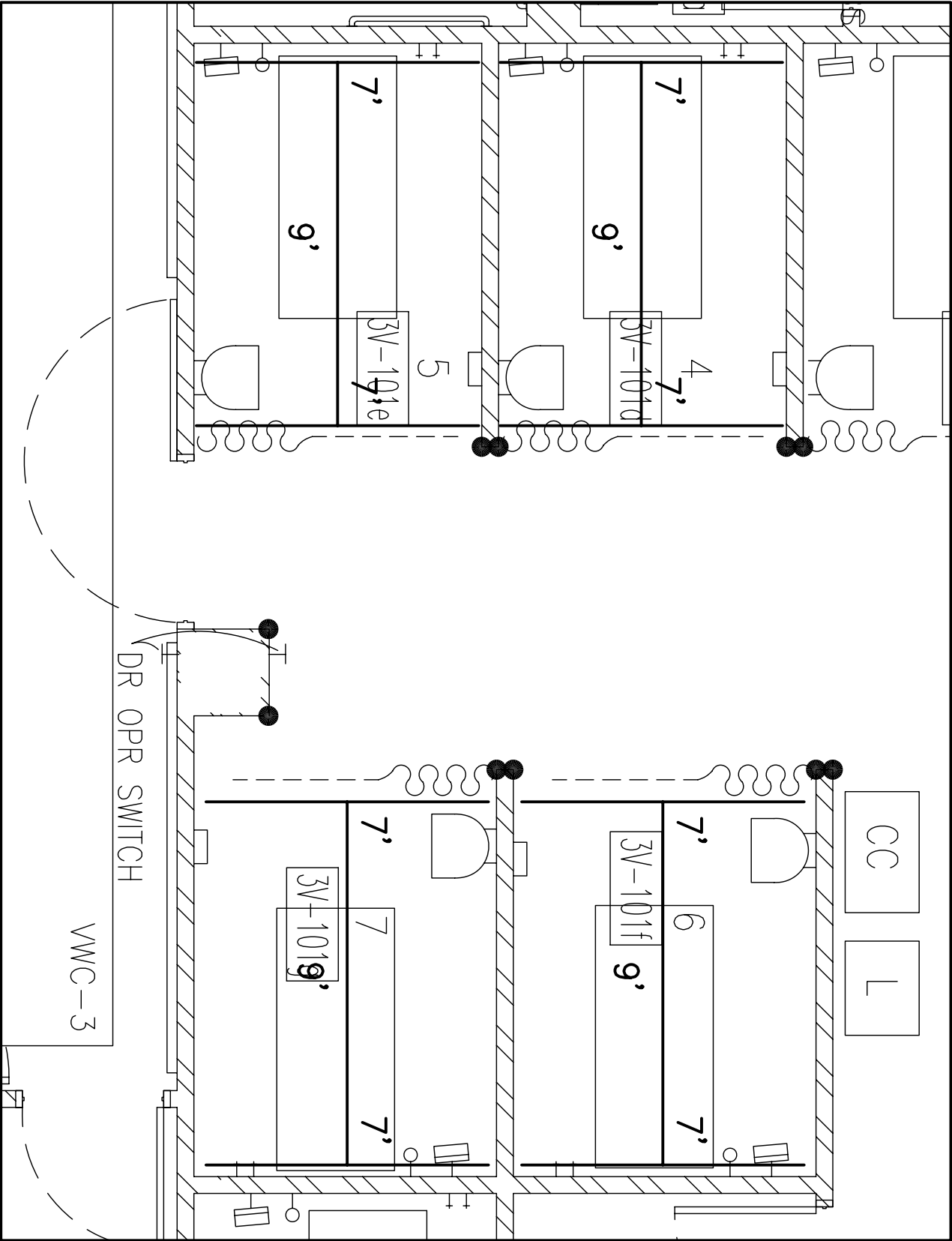
3R-135B

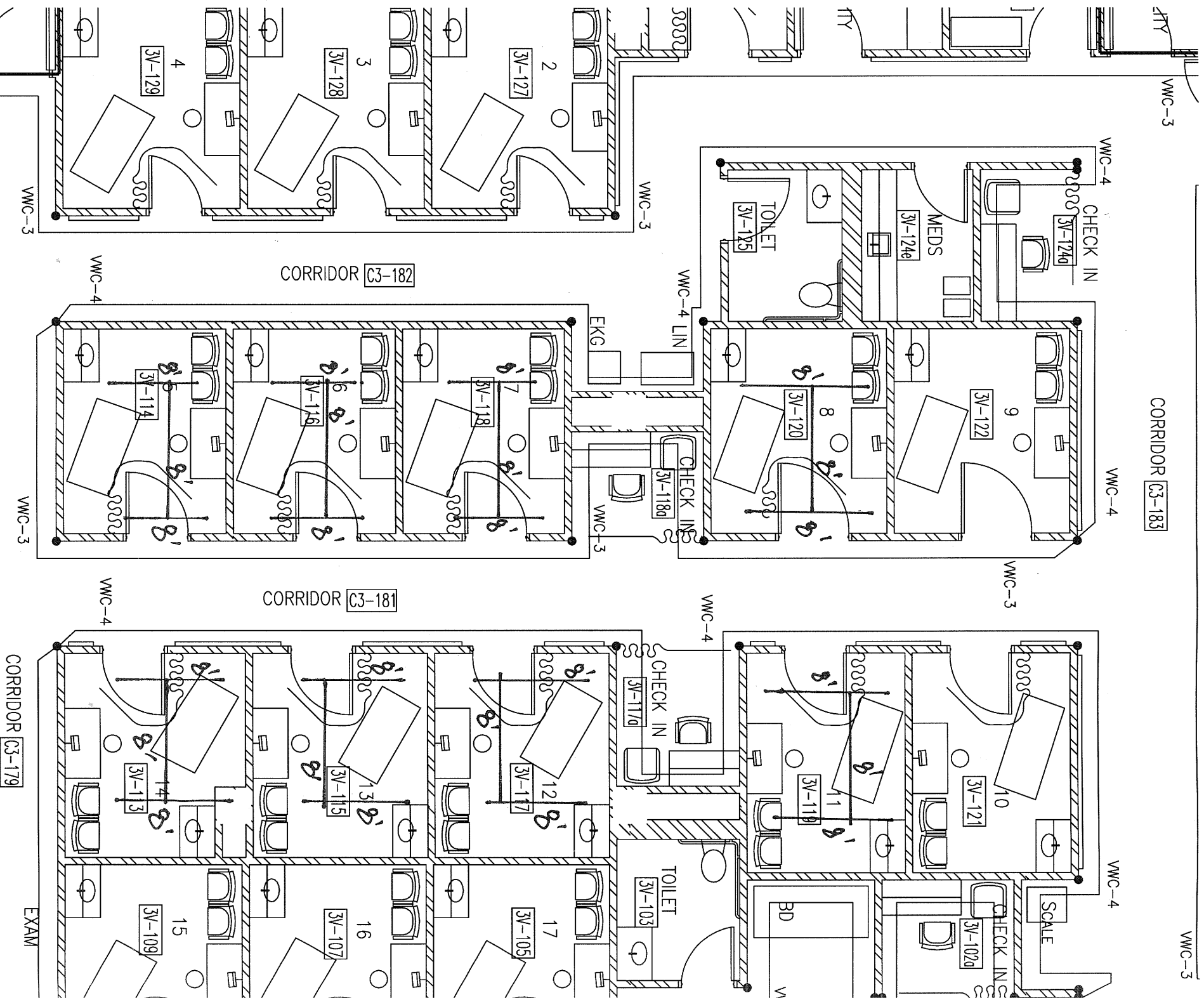
3R-135A

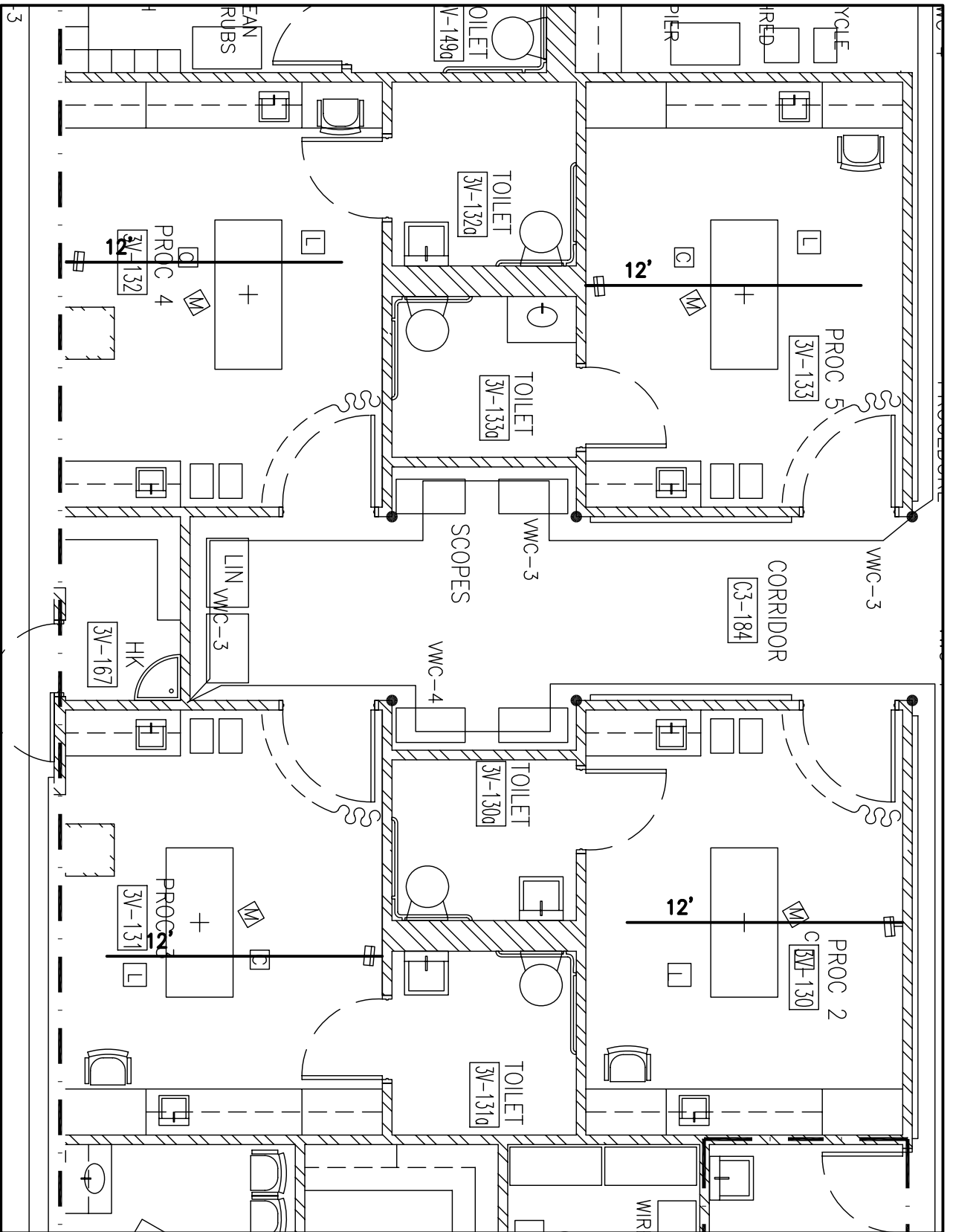
C3-128

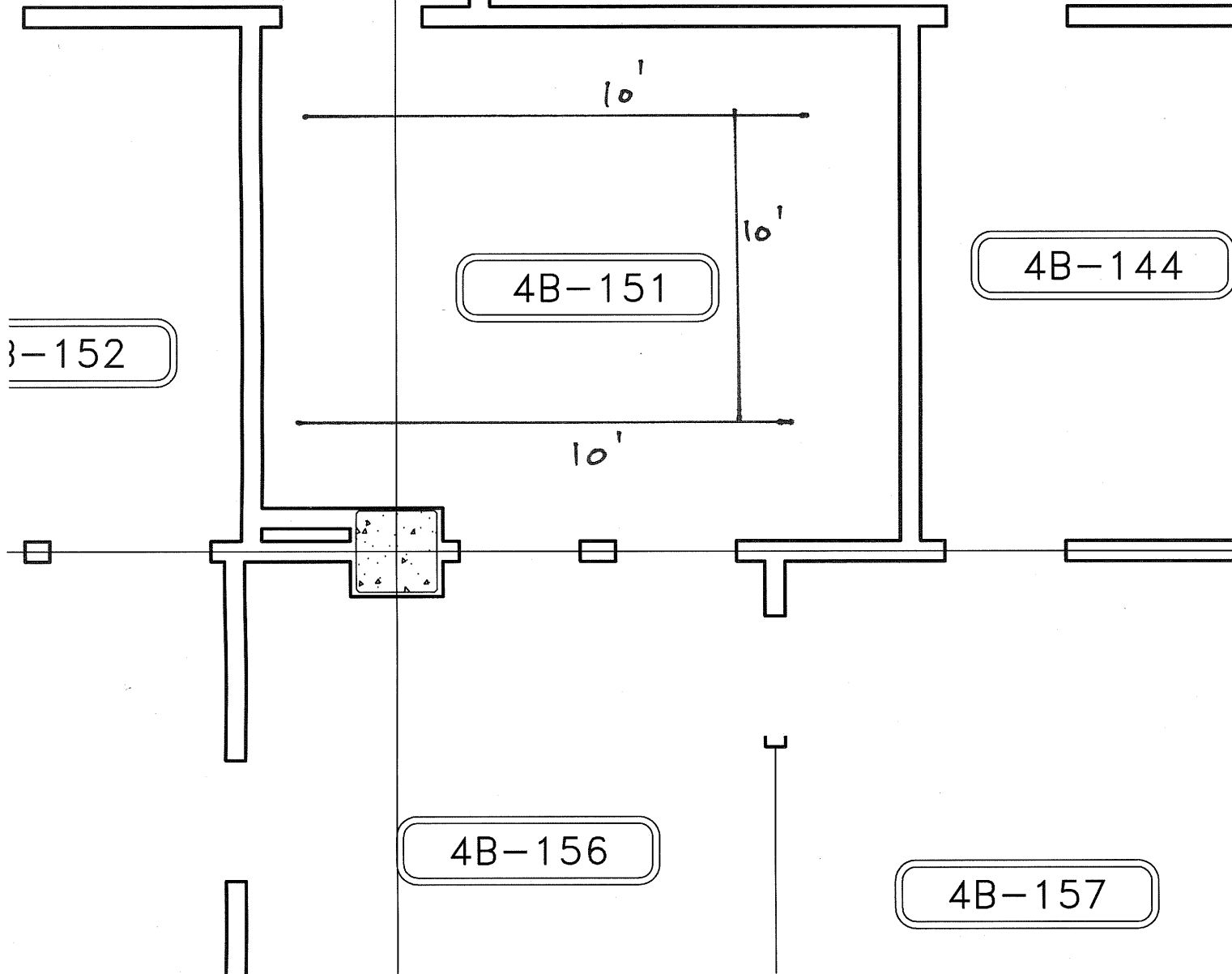
in lift area  
change  
lights  
from  
surface  
to flush  
type











4B-152

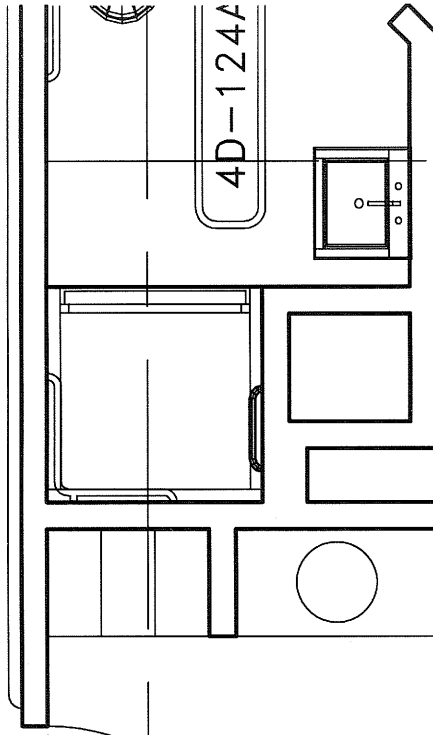
4B-151

4B-144

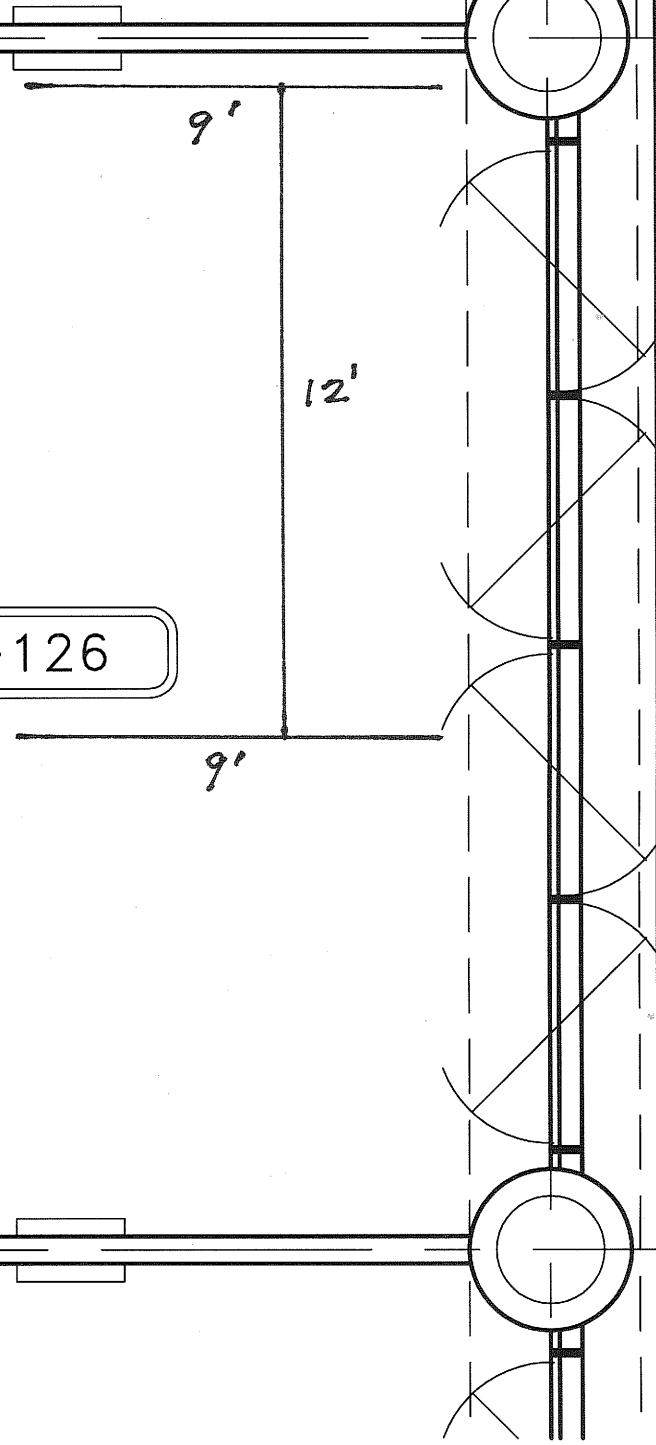
4B-156

4B-157

4D-124A



4D-126



4D-126A

