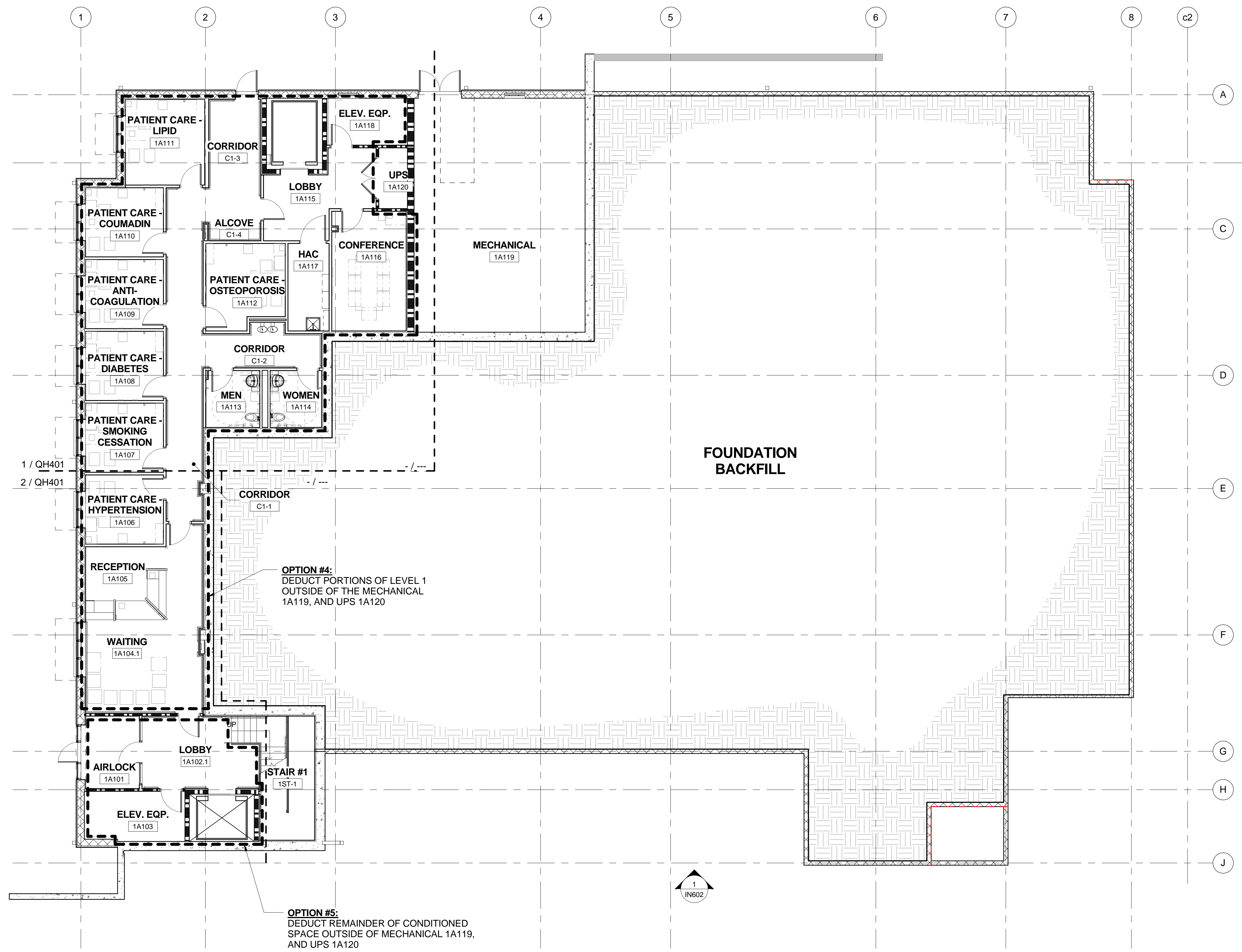


A three inches = one foot
 B one and one half inches = one foot
 C one inch = one foot
 D three quarters inch = one foot
 E one half inch = one foot
 F three eighths inch = one foot
 G one quarter inch = one foot
 H one eighth inch = one foot



1 LEVEL 1 - OVERALL EQUIPMENT PLAN
 1/8" = 1'-0"

GENERAL EQUIPMENT PLAN NOTES

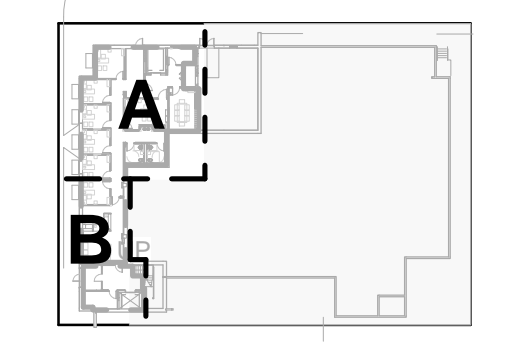
- A SEE 'EQUIPMENT MOUNTING LEGEND' ON SHEET GI003 FOR TOILET ACCESSORY MOUNTING REQUIREMENTS.
- B ALL DRAWERS AND CABINETS PATIENTS HAVE ACCESS TO NEED TO BE LOCKABLE.
- C JSN (JOINT SCHEDULE NUMBERS) ARE BASED ON MIL-STD 1691 MASTER EQUIPMENT LIST
- D SEE DETAILS 2, 3, 4, & 6 ON SHEET AE516 FOR WALL PROTECTION (WP-01, WP-02, & WP-03) DETAILS.

LEVEL 1 - EQUIPMENT SCHEDULE

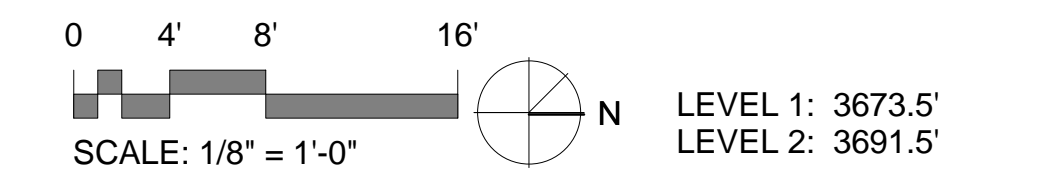
JSN	DESCRIPTION	JSN ACQ/INS ASSIGNMENT
A-ARCHITECTURAL		
A1000	CABINET; FIRE EXTINGUISHER; RECESSED	C/C
A1015	TELEPHONE; DESK; MULTIPLE LINE	V/V
A1017	TELEPHONE; WALL MOUNTED; MULTIPLE LINE	V/V
E-MODULAR CASEWORK		
E0210	WORKSURFACE; W/OVERHEAD CAB; WALL MTD; 48 W	V/V
F-FURNITURE AND FURNISHINGS		
F0120	BOOKCASE; EXECUTIVE; 3 SHELF; WOOD	V/V
F0205	CHAIR; SIDE; WITH ARMS	V/V
F0210	CHAIR; SIDE; WITHOUT ARMS	V/V
F0300	CHAIR; TASK; SWIVEL; WITH ARMS	V/V
F0305	CHAIR; WAITING ROOM; SINGLE	V/V
F0305.1	CHAIR; WAITING ROOM; SINGLE BARIATRIC	V/V
F0305.2	CHAIR; WAITING ROOM; SINGLE HIP	V/V
F0690	WORKSTATION; COMPUTER; ENCLOSED; WITH LOCK	V/V
F0740.1	TABLE; OCCASIONAL; LAMP	V/V
F0755	TABLE; CONFERENCE; WOOD	V/V
F2000.1	BASKET; WASTEPAPER; ROUND; METAL	V/V
F2000.2	BASKET; WASTEPAPER; RECTANGULAR; PLASTIC	V/V
F2010	BASKET; WASTE; STEP-ON; RECTANGULAR; PLASTIC	V/V
F3010	BOARD; BULLETIN 36 WIDE	V/V
M-MISCELLANEOUS		
M0011	SMARTBOARD; INTERACTIVE	V/V
M1801	COMPUTER; MICROPROCESSING; W/FLAT PANEL MONITOR	V/V

LEVEL 1 - TOILET ACCESSORY SCHEDULE

JSN	DESCRIPTION	JSN ACQ/INS ASSIGNMENT
TA-TOILET ACCESSORY		
GB-36	A5109 GRAB BAR; 1-1/4 DIA.; SS; 2 WALL; W/C ACCESSIBLE	C/C
GB-42	A5109 GRAB BAR; 1-1/4 DIA.; SS; 2 WALL; W/C ACCESSIBLE	C/C
HK-1	A5145 HOOK; GARMENT; DOUBLE; SS; SURFACE MOUNTED	C/C
MR-1	A1066 MIRROR; FLOAT GLASS; WITH SS FRAME	C/C
PTD-1	A5080 DISPENSER; PAPER TOWEL; SS; SURFACE MOUNTED	V/V
RCK-1	A5135 SHELF; UTILITY W/ MOP/BROOM HOLDERS; SS; SURF MNTD	C/C
SD-1	A5075 DISPENSER; SOAP; DISPOSABLE	V/V
SHLF-01	SHELF; FOLD DOWN; STAINLESS STEEL	C/C
SND-1	A5090 - DISPOSAL, SANITARY NAPKINS; SURFACE MNTD	V/V
TPD-1	A5200 DISPENSER; TOILET TISSUE; SS; 2-ROLL; SURFACE MNTD	V/V



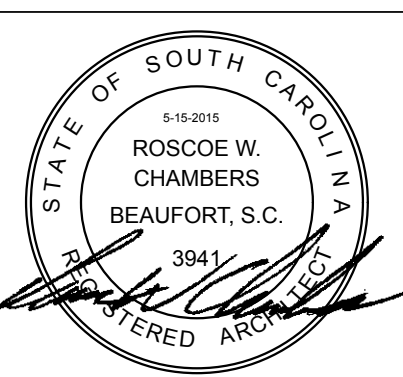
KEY PLAN



Revisions:

Revisions:	Date

CONSULTANTS:



ARCHITECT/ENGINEERS:

BES DESIGN/BUILD

BES DESIGN/BUILD, LLC
 766 Middle St, Fairhope, AL 36532
 Phone: 251.990.5778
 Fax: 251.990.3716

Drawing Title
LEVEL 1 - OVERALL EQUIPMENT PLAN

Approved: Project Director

Project Title
PRIMARY CARE ADDITION PHASE 1

Project Number
504-222

Building Number
48

Location
**THOMAS CREEK VA MEDICAL CENTER
 AMARILLO, TEXAS**

Date
2015.05.15

Drawn
JDB

Checked
RWC

Drawing Number
QH101

Dwg. 72 of 137



GENERAL EQUIPMENT PLAN NOTES

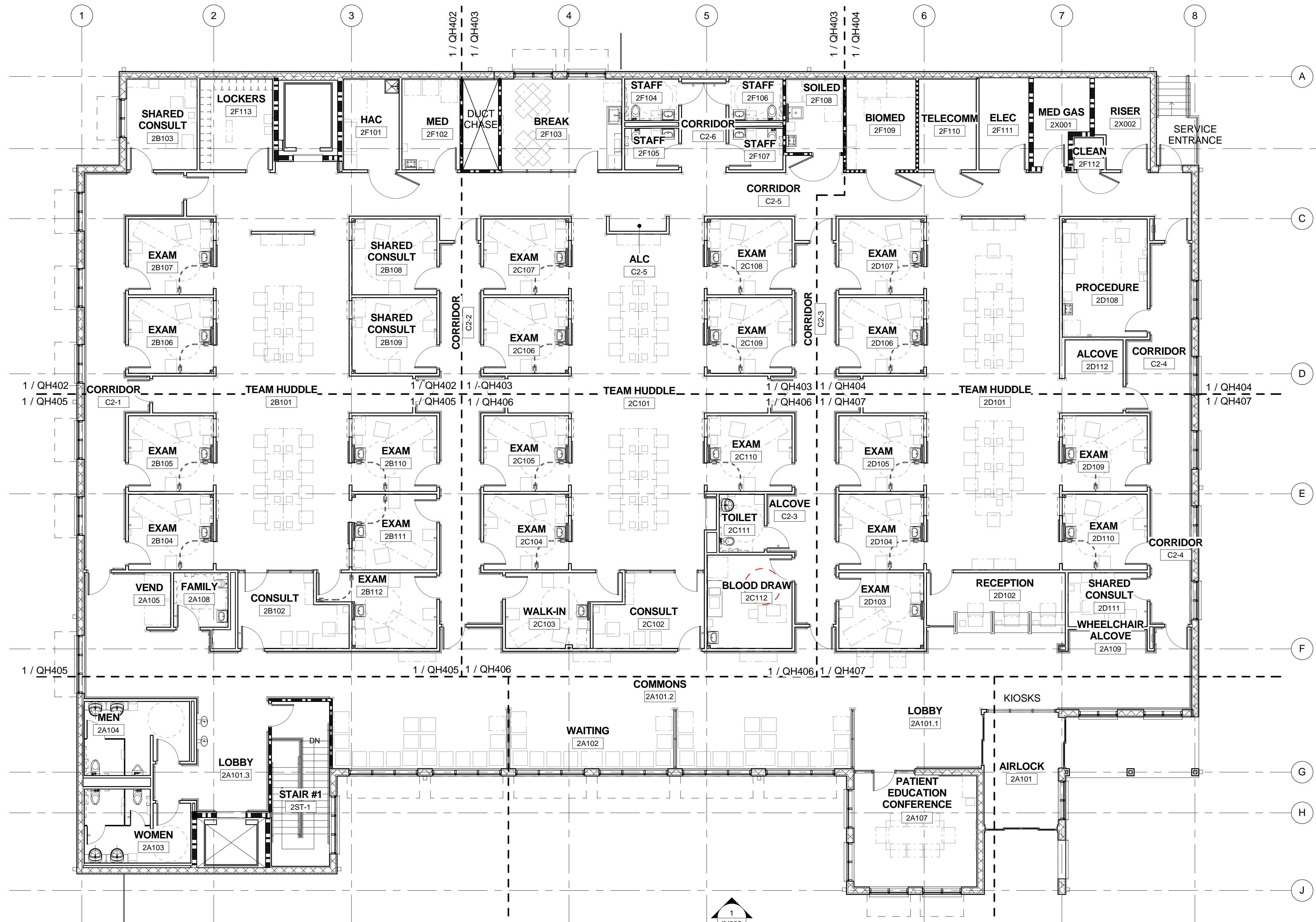
- A SEE 'EQUIPMENT MOUNTING LEGEND' ON SHEET G1003 FOR TOILET ACCESSORY MOUNTING REQUIREMENTS.
- B ALL DRAWERS AND CABINETS PATIENTS HAVE ACCESS TO NEED TO BE LOCKABLE.
- C JSN (JOINT SCHEDULE NUMBERS) ARE BASED ON MIL-STD 1691 MASTER EQUIPMENT LIST
- D SEE DETAILS 2, 3, 4, & 6 ON SHEET AE516 FOR WALL PROTECTION (WP-01, WP-02, & WP-03) DETAILS.

LEVEL 2 - TOILET ACCESSORY SCHEDULE

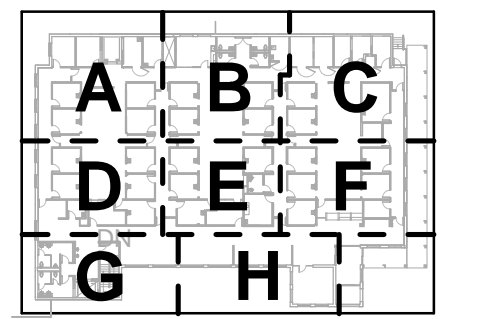
JSN	DESCRIPTION	JSN ACO/INS ASSIGNMENT
TA-TOILET ACCESSORY		
BCS-1	A4985 TABLE; DIAPER CHANGING; WALL MOUNTED	C/C
GB-36	A5109 GRAB BAR; 1-1/4 DIA.; SS; 2 WALL; W/C ACCESSIBLE	C/C
GB-42	A5109 GRAB BAR; 1-1/4 DIA.; SS; 2 WALL; W/C ACCESSIBLE	C/C
HK-1	A5145 HOOK; GARMENT; DOUBLE; SS; SURFACE MOUNTED	C/C
HSD-1	A5071 DISPENSER; HAND SANITIZER; SURFACE MOUNTED; DISPOSAL	V/V
MR-1	A1066 MIRROR; FLOAT GLASS; WITH SS FRAME	C/C
MR-2	A1080 MIRROR; POSTURE; WALL MOUNTED	C/C
PTD-1	A5080 DISPENSER; PAPER TOWEL; SS; SURFACE MOUNTED	V/V
SD-1	A5075 DISPENSER; SOAP; DISPOSABLE	V/V
SHLF-01	SHELF; FOLD DOWN; STAINLESS STEEL	C/C
SND-1	A5090 - DISPOSAL, SANITARY NAPKINS; SURFACE MNTD	V/V
TPD-1	A5200 DISPENSER; TOILET TISSUE; SS; 2-ROLL; SURFACE MNTD	V/V

LEVEL 2 - EQUIPMENT SCHEDULE

JSN	DESCRIPTION	JSN ACO/INS ASSIGNMENT
A-ARCHITECTURAL		
A1000	CABINET; FIRE EXTINGUISHER; RECESSED	C/C
A1015	TELEPHONE; DESK; MULTIPLE LINE	V/V
A1017	TELEPHONE; WALL MOUNTED; MULTIPLE LINE	V/V
A1035	LOCKER; 2 TIER METAL WARDROBE WITH SLOPED TOP	C/C
A5020	BENCH; LOCKER ROOM; FLOOR MOUNTED	V/V
A5085	DISPENSER; PAPER CUP; SS; SURFACE MOUNTED	C/C
A5106	WASTE DISPOSAL UNIT; SHARPS W/ GLOVE DISPENSER	V/V
A5107	DISPENSER; GLOVE; SURGICAL/EXAMINATION; WALL MNTD	V/V
A5108	WASTE DISPOSAL UNIT; SHARPS	V/V
A5108.2	WASTE DISPOSAL UNIT; SHARPS; MOBILE; 18 GALLON	V/V
A5180	CUBICAL CURTAIN	C/C
A6030	MACHINE; VENDING	V/V
E-MODULAR CASEWORK		
E0210	WORKSURFACE; W/OVERHEAD CAB; WALL MTD; 48 W	V/V
E0210.1	WORKSTATION; HUDDLE; 42"	V/V
E0210.2	WORKSTATION; HUDDLE; 60"	V/V
E0948	CART; GENERAL STORAGE; MOBILE	V/V
F-FURNITURE AND FURNISHINGS		
F0120	BOOKCASE; EXECUTIVE; 3 SHELF; WOOD	V/V
F0120.1	BOOKCASE; EXECUTIVE; 5 SHELF; WOOD	V/V
F0205	CHAIR; SIDE; WITH ARMS	V/V
F0210	CHAIR; SIDE; WITHOUT ARMS	V/V
F0225	CHAIR; DINING ROOM	V/V
F0230	CHAIR; DRAFTING; ROTARY	V/V
F0300	CHAIR; TASK; SWIVEL; WITH ARMS	V/V
F0305	CHAIR; WAITING ROOM; SINGLE	V/V
F0305.1	CHAIR; WAITING ROOM; SINGLE BARIATRIC	V/V
F0305.2	CHAIR; WAITING ROOM; SINGLE HIP	V/V
F0340	STOOL; SELF ADJUSTING	V/V
F0500	CART; JANITOR'S	V/V
F0510	CART; LINEN; SOILED	V/V
F0535	CART; UTILITY	V/V
F0690	WORKSTATION; COMPUTER; ENCLOSED; WITH LOCK	V/V
F0740.1	TABLE; OCCASIONAL; LAMP	V/V
F0740.2	TABLE; OCCASIONAL; LAMP	V/V
F0755	TABLE; CONFERENCE; WOOD	V/V
F0795	TABLE; DINING	V/V
F2000.1	BASKET; WASTEPAPER; ROUND; METAL	V/V
F2000.2	BASKET; WASTEPAPER; RECTANGULAR; PLASTIC	V/V
F2010	BASKET; WASTE; STEP-ON; RECTANGULAR; PLASTIC	V/V
F2017	WASTE RECEPTACLE; 24 GAL	V/V
F3010	BOARD; BULLETIN 36 WIDE	V/V
F3200	CLOCK; BATTERY; 12 DIAMETER	V/V
K-KITCHEN EQUIPMENT		
K1552	BREWER; COFFEE; AUTO; ELECT; 3 BURNER; FRONT/BACK	V/V
K4660	OVEN; MICROWAVE; HEAVY DUTY; 1000 WATTS	V/V
L-LABORATORY EQUIPMENT		
L1200.1	CABINET; PASS THRU; WALL MOUNTED	C/C
L1200.2	CABINET; WALL MOUNTED	C/C
L1350	CENTRIFUGE; TABLE; SMALL; 3200 RPM; 6 PLACE	V/V
M-MISCELLANEOUS		
M0011	SMARTBOARD; INTERACTIVE	V/V
M0500	TELEVISION 32" FLAT PANEL LCD W/BKT	V/V
M0506	TELEVISION, FLAT SCREEN	V/V
M0506.1	INTERACTIVE KIOSK	V/V
M0512	TELEVISION, HDTV 60"	V/V
M1410	CHAIR; LABORATORY; BLOOD DRAWING; W/STORAGE	V/V
M1801	COMPUTER; MICROPROCESSING; W/FLAT PANEL MONITOR	V/V
M2050	SHELVING; STORAGE; 75H X 36W X 14D	V/V
M2600	VACUUM; WET/DRY; HEPA FILTRATION	V/V
M2650	SCRUBBER; FLOOR; AUTOMATIC; RECHARGEABLE	V/V
M3070	HAMPER; LINEN; MOBILE; W/LID	V/V
M3150	DISTRIBUTION SYSTEM; MEDICATION; AUTOMATIC	V/V
M4100	SPHYGMOMANOMETER; WALL MOUNTED	V/V
M4200	OTOSCOPE / OPHTHALMOSCOPE; WALL MOUNTED	V/V
M5020	WORKBENCH; FABRICATION/MAINTENANCE	V/V
M7250	CART; MEDICATION; UNIT DOSE	V/V
M7401	LIGHT; EXAM; MOBILE; SPOTLIGHT; MOBILE STAND	V/V
M8320	TABLE; TREATMENT; HI/LO	V/V
M9025	TABLE; EXAMINATION/TREATMENT; WITH CABINET	V/V
R-REFRIGERATION		
R7000	REFRIGERATOR; 14 CUBIC FEET	V/V
R7250	REFRIGERATOR/ FREEZER; 20 CUBIC FEET	V/V
X-XRAY EQUIPMENT AND ACCESSORIES		
X3930.2	ILLUMINATOR; FILM; DOUBLE; WALL MOUNTED	V/V



1 LEVEL 2 OVERALL EQUIPMENT PLAN
1/8" = 1'-0"



0 4' 8' 16'
SCALE: 1/8" = 1'-0" N
LEVEL 1: 3673.5'
LEVEL 2: 3691.5'

BID DOCUMENTS FULLY SPRINKLERED

<p>CONSULTANTS:</p>	<p>ARCHITECT/ENGINEERS:</p> <div style="text-align: center;"> BES DESIGN/BUILD BES DESIGN/BUILD, LLC 766 Middle St, Fairhope, AL 36532 Phone: 251.990.5778 Fax: 251.990.3716 </div>	<p>Drawing Title LEVEL 2 - OVERALL EQUIPMENT PLAN</p> <p>Project Title PRIMARY CARE ADDITION PHASE 1</p> <p>Location THOMAS CREEK VA MEDICAL CENTER AMARILLO, TEXAS</p>	<p>Project Number 504-222</p> <p>Building Number 48</p> <p>Drawing Number QH102</p> <p>Dwg. 73 of 137</p>	<p>Approved: Project Director</p> <p>Date 2015.05.15</p> <p>Drawn JDB</p> <p>Checked RWC</p>
---------------------	--	--	--	---

A three inches = one foot
 B one and one half inches = one foot
 C one inch = one foot
 D three quarters inch = one foot
 E one half inch = one foot
 F one quarter inch = one foot
 G one eighth inch = one foot

GENERAL EQUIPMENT PLAN NOTES

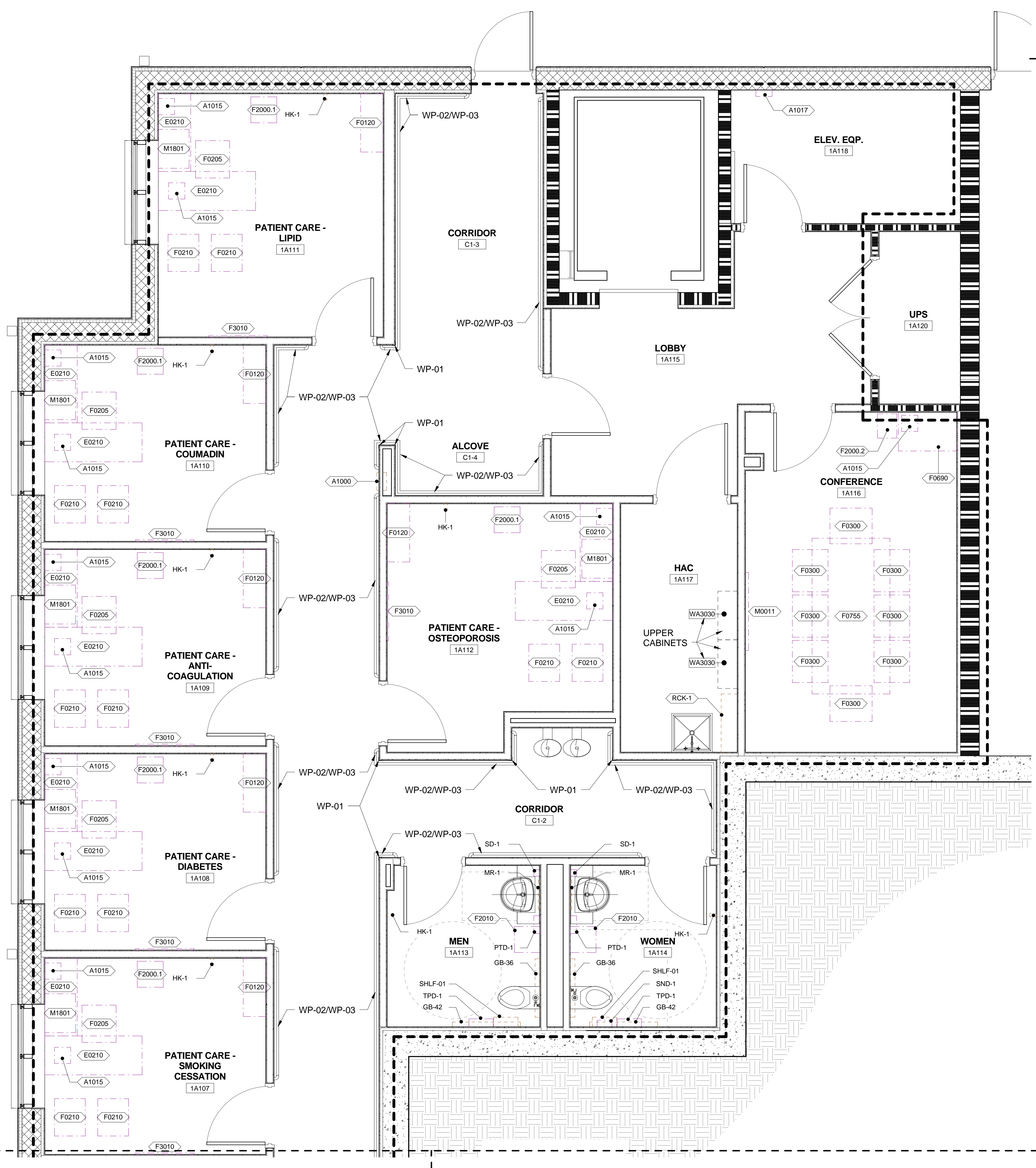
- A SEE 'EQUIPMENT MOUNTING LEGEND' ON SHEET GI003 FOR TOILET ACCESSORY MOUNTING REQUIREMENTS
- B ALL DRAWERS AND CABINETS PATIENTS HAVE ACCESS TO NEED TO BE LOCKABLE.
- C JSN (JOINT SCHEDULE NUMBERS) ARE BASED ON MIL-STD 1691 MASTER EQUIPMENT LIST
- D SEE DETAILS 2, 3, 4, & 6 ON SHEET AE516 FOR WALL PROTECTION (WP-01, WP-02, & WP-03) DETAILS.

EQUIPMENT SCHEDULE

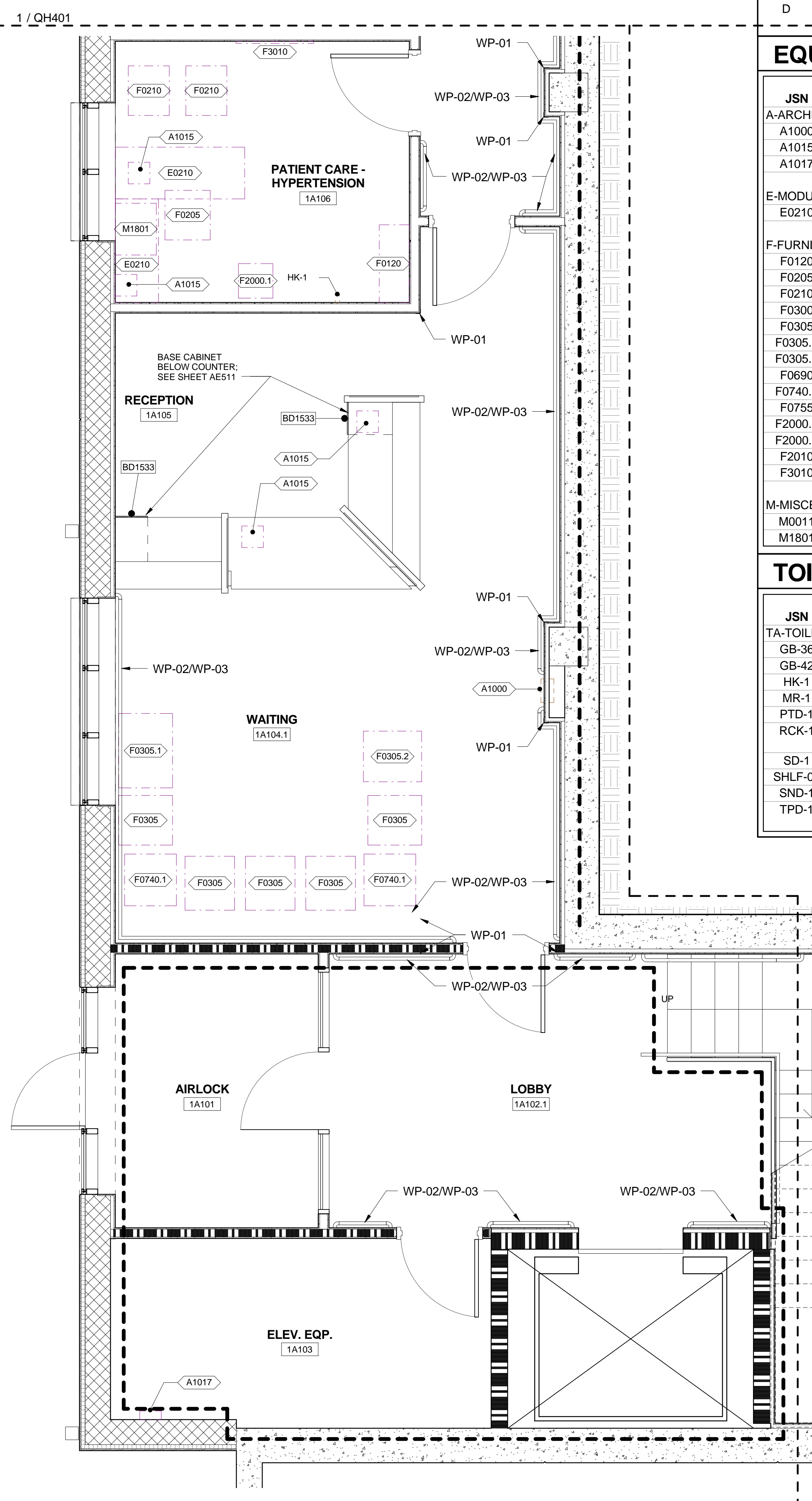
JSN	DESCRIPTION	JSN ACQ/INS ASSIGNMENT
A-ARCHITECTURAL		
A1000	CABINET; FIRE EXTINGUISHER; RECESSED	C/C
A1015	TELEPHONE; DESK; MULTIPLE LINE	V/V
A1017	TELEPHONE; WALL MOUNTED; MULTIPLE LINE	V/V
E-MODULAR CASEWORK		
E0210	WORKSURFACE; W/OVERHEAD CAB; WALL MTD; 48 W	V/V
F-FURNITURE AND FURNISHINGS		
F0120	BOOKCASE; EXECUTIVE; 3 SHELF; WOOD	V/V
F0205	CHAIR; SIDE; WITH ARMS	V/V
F0210	CHAIR; SIDE; WITHOUT ARMS	V/V
F0300	CHAIR; TASK; SWIVEL; WITH ARMS	V/V
F0305	CHAIR; WAITING ROOM; SINGLE	V/V
F0305.1	CHAIR; WAITING ROOM; SINGLE BARIATRIC	V/V
F0305.2	CHAIR; WAITING ROOM; SINGLE HIP	V/V
F0690	WORKSTATION; COMPUTER; ENCLOSED; WITH LOCK	V/V
F0740.1	TABLE; OCCASIONAL; LAMP	V/V
F0755	TABLE; CONFERENCE; WOOD	V/V
F2000.1	BASKET; WASTEPAPER; ROUND; METAL	V/V
F2000.2	BASKET; WASTEPAPER; RECTANGULAR; PLASTIC	V/V
F2010	BASKET; WASTE; STEP-ON; RECTANGULAR; PLASTIC	V/V
F3010	BOARD; BULLETIN 36 WIDE	V/V
M-MISCELLANEOUS		
M0011	SMARTBOARD; INTERACTIVE	V/V
M1801	COMPUTER; MICROPROCESSING; W/FLAT PANEL MONITOR	V/V

TOILET ACCESSORY SCHEDULE

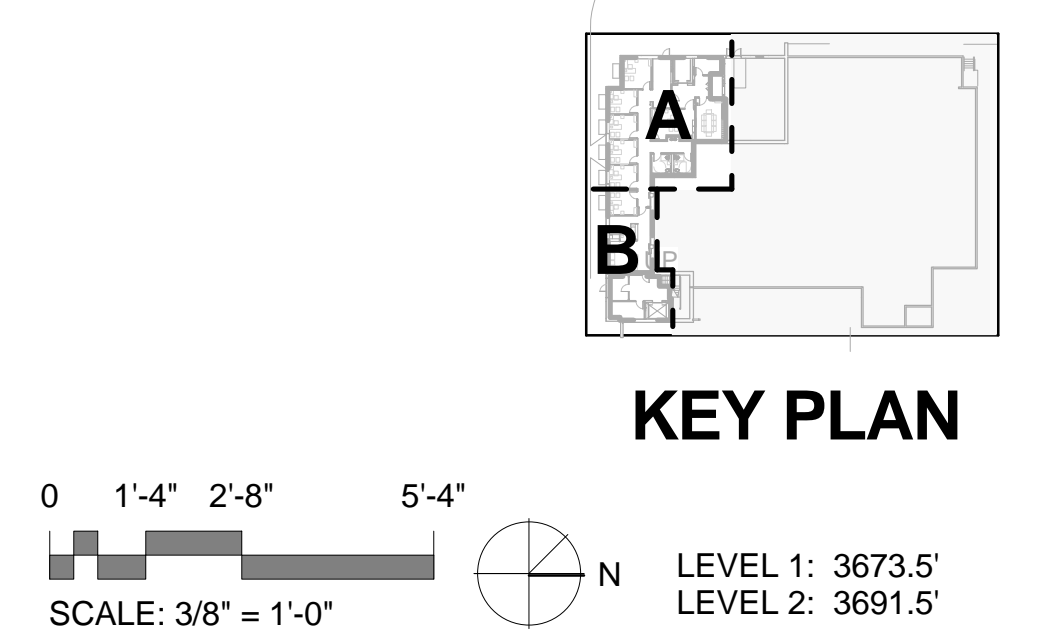
JSN	DESCRIPTION	JSN ACQ/INS ASSIGNMENT
TA-TOILET ACCESSORY		
GB-36	A5109 GRAB BAR; 1-1/4 DIA.; SS; 2 WALL; W/C ACCESSIBLE	C/C
GB-42	A5109 GRAB BAR; 1-1/4 DIA.; SS; 2 WALL; W/C ACCESSIBLE	C/C
HK-1	A5145 HOOK; GARMENT; DOUBLE; SS; SURFACE MOUNTED	C/C
MR-1	A1066 MIRROR; FLOAT GLASS; WITH SS FRAME	C/C
PTD-1	A5080 DISPENSER; PAPER TOWEL; SS; SURFACE MOUNTED	V/V
RCK-1	A5135 SHELF; UTILITY W/ MOP/BROOM HOLDERS; SS; SURF MNTD	C/C
SD-1	A5075 DISPENSER; SOAP; DISPOSABLE	V/V
SHLF-01	SHELF; FOLD DOWN; STAINLESS STEEL	C/C
SND-1	A5090 - DISPOSAL; SANITARY NAPKINS; SURFACE MNTD	V/V
TPD-1	A5200 DISPENSER; TOILET TISSUE; SS; 2-ROLL; SURFACE MNTD	V/V



1 LEVEL 1 - AREA A EQUIPMENT PLAN
 3/8" = 1'-0"

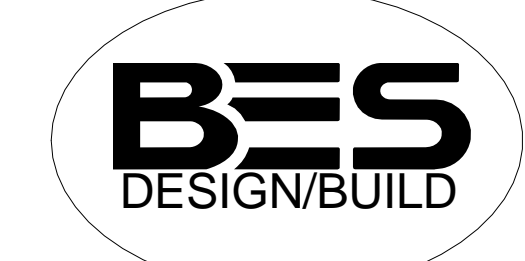
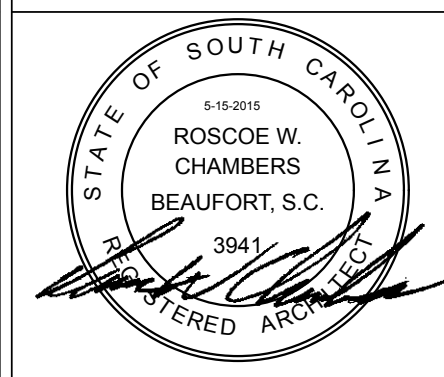


2 LEVEL 1 - AREA B EQUIPMENT PLAN
 3/8" = 1'-0"



CONSULTANTS:

ARCHITECT/ENGINEERS:



BES DESIGN/BUILD, LLC
 766 Middle St, Fairhope, AL 36532
 Phone: 251.990.5778
 Fax: 251.990.3716

Drawing Title
LEVEL 1 - AREAS A & B EQUIPMENT PLAN

Approved: Project Director

Project Title
PRIMARY CARE ADDITION PHASE 1

Location
THOMAS CREEK VA MEDICAL CENTER AMARILLO, TEXAS

Date
 2015.05.15

Project Number
504-222

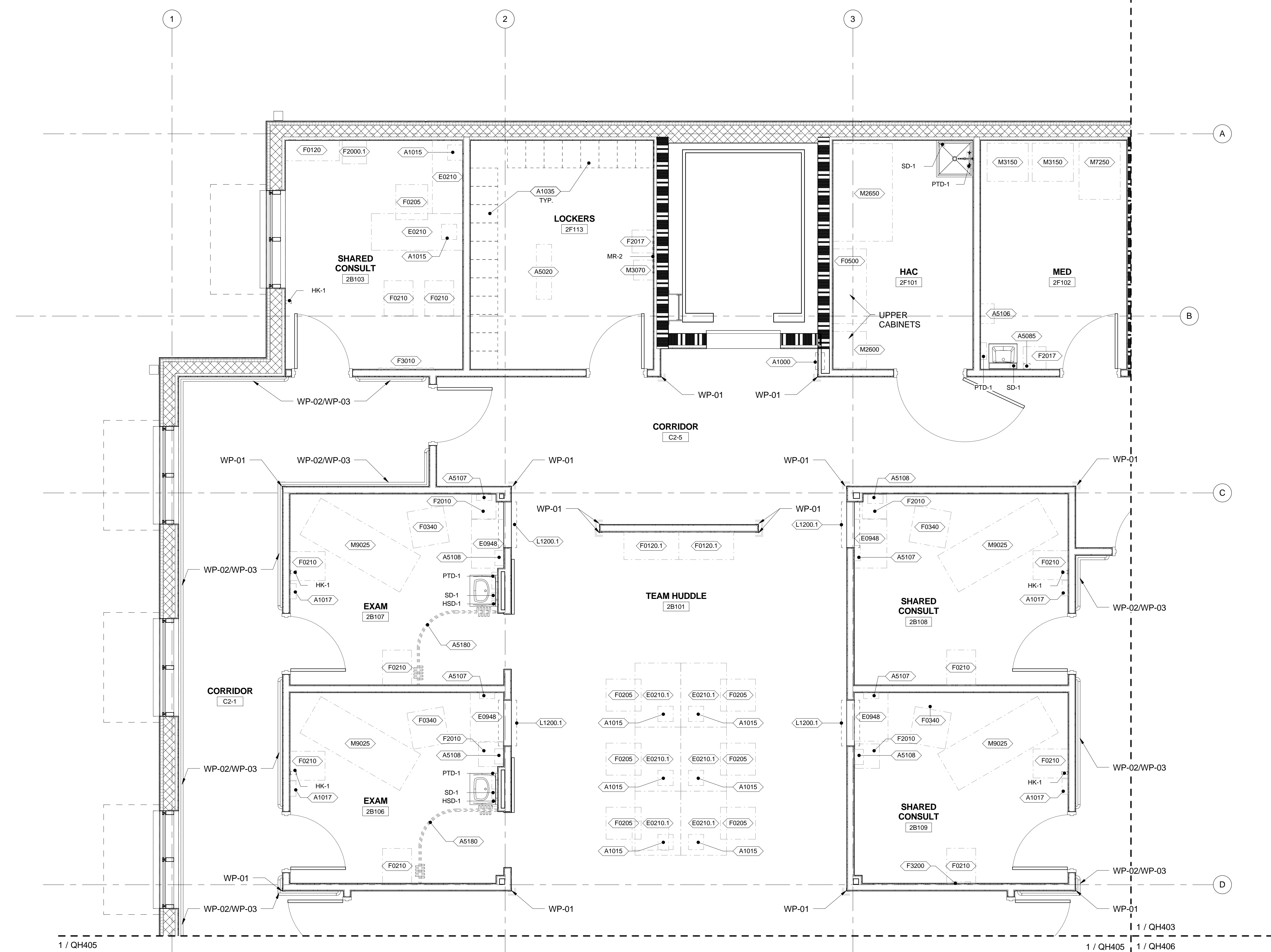
Building Number
48

Drawing Number
QH401

AMARILLO VA HEALTH CARE SYSTEM



A three inches = one foot
 B one and one half inches = one foot
 C three quarters inch = one foot
 D one half inch = one foot
 E three eighths inch = one foot
 F one quarter inch = one foot
 G one eighth inch = one foot



1 LEVEL 2 - AREA A EQUIPMENT PLAN
 3/8" = 1'-0"

GENERAL EQUIPMENT PLAN NOTES

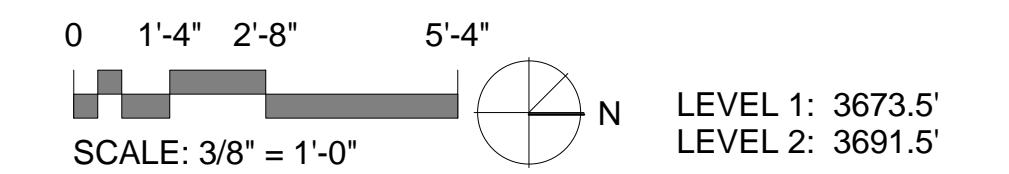
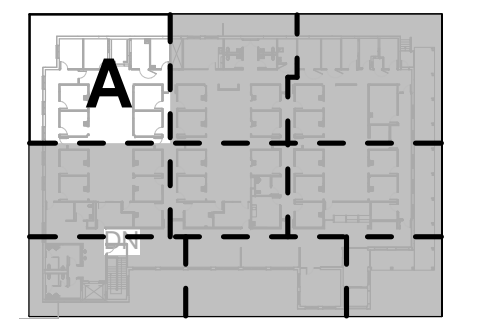
- A SEE 'EQUIPMENT MOUNTING LEGEND' ON SHEET GI003 FOR TOILET ACCESSORY MOUNTING REQUIREMENTS.
- B ALL DRAWERS AND CABINETS PATIENTS HAVE ACCESS TO NEED TO BE LOCKABLE.
- C JSN (JOINT SCHEDULE NUMBERS) ARE BASED ON MIL-STD 1691 MASTER EQUIPMENT LIST
- D SEE DETAILS 2, 3, 4, & 6 ON SHEET AE516 FOR WALL PROTECTION (WP-01, WP-02, & WP-03) DETAILS.

EQUIPMENT SCHEDULE

JSN	DESCRIPTION	JSN ACQ/INS ASSIGNMENT
A-ARCHITECTURAL		
A1000	CABINET; FIRE EXTINGUISHER; RECESSED	C/C
A1015	TELEPHONE; DESK; MULTIPLE LINE	V/V
A1017	TELEPHONE; WALL MOUNTED; MULTIPLE LINE	V/V
A1035	LOCKER; 2 TIER METAL WARDROBE WITH SLOPED TOP	C/C
A5020	BENCH; LOCKER ROOM; FLOOR MOUNTED	V/V
A5085	DISPENSER; PAPER CUP; SS; SURFACE MOUNTED	C/C
A5106	WASTE DISPOSAL UNIT; SHARPS W/ GLOVE DISPENSER	V/V
A5107	DISPENSER; GLOVE; SURGICAL/EXAMINATION; WALL MNTD	V/V
A5108	WASTE DISPOSAL UNIT; SHARPS	V/V
A5180	CUBICAL CURTAIN	C/C
E-MODULAR CASEWORK		
E0210	WORKSURFACE; W/OVERHEAD CAB; WALL MTD; 48 W	V/V
E0210.1	WORKSTATION; HUDDLE; 42"	V/V
E0948	CART; GENERAL STORAGE; MOBILE	V/V
F-FURNITURE AND FURNISHINGS		
F0120	BOOKCASE; EXECUTIVE; 3 SHELF; WOOD	V/V
F0120.1	BOOKCASE; EXECUTIVE; 5 SHELF; WOOD	V/V
F0205	CHAIR; SIDE; WITH ARMS	V/V
F0210	CHAIR; SIDE; WITHOUT ARMS	V/V
F0340	STOOL; SELF ADJUSTING	V/V
F0500	CART; JANITOR'S	V/V
F2000.1	BASKET; WASTEPAPER; ROUND; METAL	V/V
F2010	BASKET; WASTE; STEP-ON; RECTANGULAR; PLASTIC	V/V
F2017	WASTE RECEPTACLE; 24 GAL	V/V
F3010	BOARD; BULLETIN 36 WIDE	V/V
F3200	CLOCK; BATTERY; 12 DIAMETER	V/V
L-LABORATORY EQUIPMENT		
L1200.1	CABINET; PASS THRU; WALL MOUNTED	C/C
M-MISCELLANEOUS		
M1801	COMPUTER; MICROPROCESSING; W/FLAT PANEL MONITOR	V/V
M2600	VACUUM; WET/DRY; HEPA FILTRATION	V/V
M2650	SCRUBBER; FLOOR; AUTOMATIC; RECHARGEABLE	V/V
M3070	HAMPER; LINEN; MOBILE; W/LID	V/V
M3150	DISTRIBUTION SYSTEM; MEDICATION; AUTOMATIC	V/V
M7250	CART; MEDICATION; UNIT DOSE	V/V
M9025	TABLE; EXAMINATION/TREATMENT; WITH CABINET	V/V

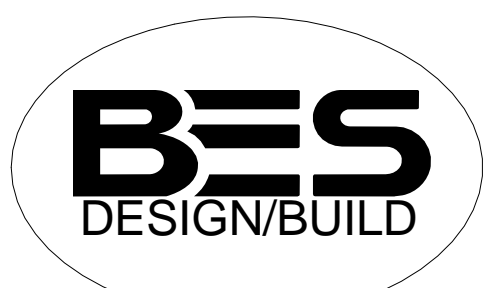
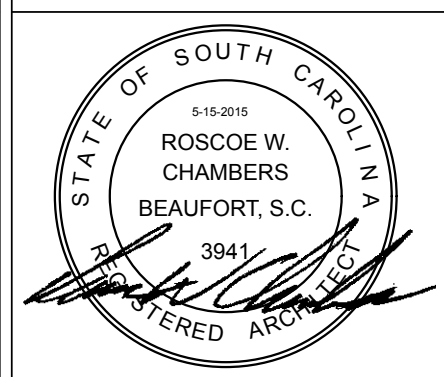
TOILET ACCESSORY SCHEDULE

JSN	DESCRIPTION	JSN ACQ/INS ASSIGNMENT
TA-TOILET ACCESSORY		
HK-1	A5145 HOOK; GARMENT; DOUBLE; SS; SURFACE MOUNTED	C/C
HSD-1	A5071 DISPENSER; HAND SANITIZER; SURFACE MOUNTED; DISPOSAL	V/V
MR-2	A1080 MIRROR; POSTURE; WALL MOUNTED	C/C
PTD-1	A5080 DISPENSER; PAPER TOWEL; SS; SURFACE MOUNTED	V/V
SD-1	A5075 DISPENSER; SOAP; DISPOSABLE	V/V



CONSULTANTS:

ARCHITECT/ENGINEERS:



BES DESIGN/BUILD, LLC
 766 Middle St, Fairhope, AL 36532
 Phone: 251.990.5778
 Fax: 251.990.3716

Drawing Title
LEVEL 2 - AREA A EQUIPMENT PLAN

Project Title
**PRIMARY CARE ADDITION
 PHASE 1**

Project Number
504-222
 Building Number
48

**AMARILLO VA
 HEALTH CARE
 SYSTEM**

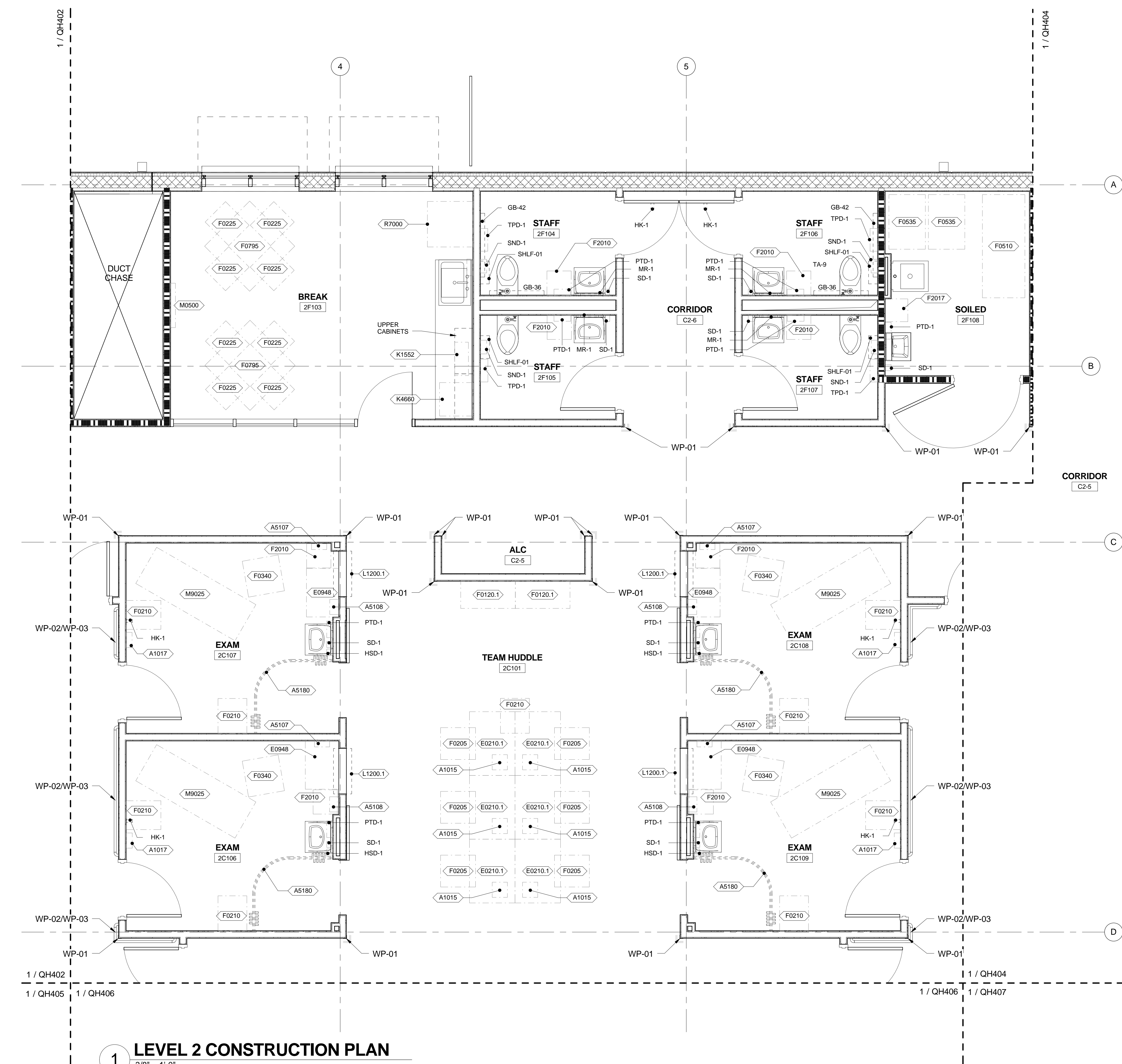
Approved: Project Director

Location
**THOMAS CREEK VA MEDICAL CENTER
 AMARILLO, TEXAS**

Drawing Number
QH402



A three inches = one foot
 B one and one half inches = one foot
 C one inch = one foot
 D three quarters inch = one foot
 E one half inch = one foot
 F three eighths inch = one foot
 G one quarter inch = one foot
 H one eighth inch = one foot



1 LEVEL 2 CONSTRUCTION PLAN
 3/8" = 1'-0"

GENERAL EQUIPMENT PLAN NOTES

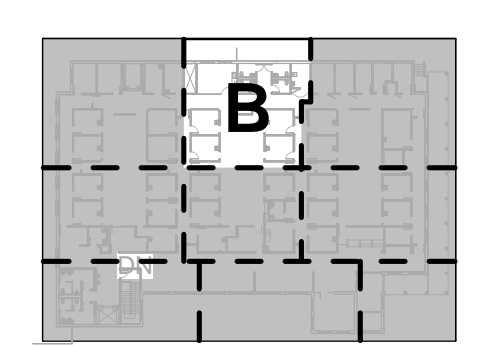
- A SEE 'EQUIPMENT MOUNTING LEGEND' ON SHEET GI003 FOR TOILET ACCESSORY MOUNTING REQUIREMENTS.
- B ALL DRAWERS AND CABINETS PATIENTS HAVE ACCESS TO NEED TO BE LOCKABLE.
- C JSN (JOINT SCHEDULE NUMBERS) ARE BASED ON MIL-STD 1691 MASTER EQUIPMENT LIST
- D SEE DETAILS 2, 3, 4, & 6 ON SHEET AE516 FOR WALL PROTECTION (WP-01, WP-02, & WP-03) DETAILS.

EQUIPMENT SCHEDULE

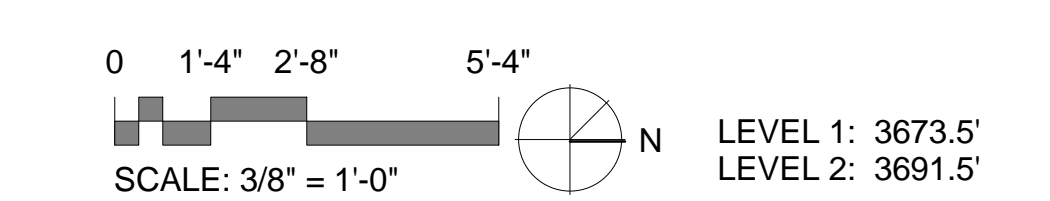
JSN	DESCRIPTION	JSN ACQ/INS ASSIGNMENT
A-ARCHITECTURAL		
A1015	TELEPHONE; DESK; MULTIPLE LINE	V/V
A1017	TELEPHONE; WALL MOUNTED; MULTIPLE LINE	V/V
A5107	DISPENSER; GLOVE; SURGICAL/EXAMINATION; WALL MNTD	V/V
A5108	WASTE DISPOSAL UNIT; SHARPS	V/V
A5180	CUBICAL CURTAIN	C/C
E-MODULAR CASEWORK		
E0210.1	WORKSTATION; HUDDLE; 42"	V/V
E0948	CART; GENERAL STORAGE; MOBILE	V/V
F-FURNITURE AND FURNISHINGS		
F0120.1	BOOKCASE; EXECUTIVE; 5 SHELF; WOOD	V/V
F0205	CHAIR; SIDE; WITH ARMS	V/V
F0210	CHAIR; SIDE; WITHOUT ARMS	V/V
F0225	CHAIR; DINING ROOM	V/V
F0340	STOOL; SELF ADJUSTING	V/V
F0510	CART; LINEN; SOILED	V/V
F0535	CART; UTILITY	V/V
F0795	TABLE; DINING	V/V
F2010	BASKET; WASTE; STEP-ON; RECTANGULAR; PLASTIC	V/V
F2017	WASTE RECEPTACLE; 24 GAL	V/V
K-KITCHEN EQUIPMENT		
K1552	BREWER; COFFEE; AUTO; ELECT; 3 BURNER; FRONT/BACK	V/V
K4660	OVEN; MICROWAVE; HEAVY DUTY; 1000 WATTS	V/V
L-LABORATORY EQUIPMENT		
L1200.1	CABINET; PASS THRU; WALL MOUNTED	C/C
M-MISCELLANEOUS		
M0500	TELEVISION 32" FLAT PANEL LCD W/BKT	V/V
M9025	TABLE; EXAMINATION/TREATMENT; WITH CABINET	V/V
R-REFRIGERATION		
R7000	REFRIGERATOR; 14 CUBIC FEET	V/V

TOILET ACCESSORY SCHEDULE

JSN	DESCRIPTION	JSN ACQ/INS ASSIGNMENT
TA-TOILET ACCESSORY		
GB-36	A5109 GRAB BAR; 1-1/4 DIA.; SS; 2 WALL; W/C ACCESSIBLE	C/C
GB-42	A5109 GRAB BAR; 1-1/4 DIA.; SS; 2 WALL; W/C ACCESSIBLE	C/C
HK-1	A5145 HOOK; GARMENT; DOUBLE; SS; SURFACE MOUNTED	C/C
HSD-1	A5071 DISPENSER; HAND SANITIZER; SURFACE MOUNTED; DISPOSAL	V/V
MR-1	A1066 MIRROR; FLOAT GLASS; WITH SS FRAME	C/C
PTD-1	A5080 DISPENSER; PAPER TOWEL; SS; SURFACE MOUNTED	V/V
SD-1	A5075 DISPENSER; SOAP; DISPOSABLE	V/V
SHLF-01	SHELF; FOLD DOWN; STAINLESS STEEL	C/C
SND-1	A5090 - DISPOSAL; SANITARY NAPKINS; SURFACE MNTD	V/V
TPD-1	A5200 DISPENSER; TOILET TISSUE; SS; 2-ROLL; SURFACE MNTD	V/V



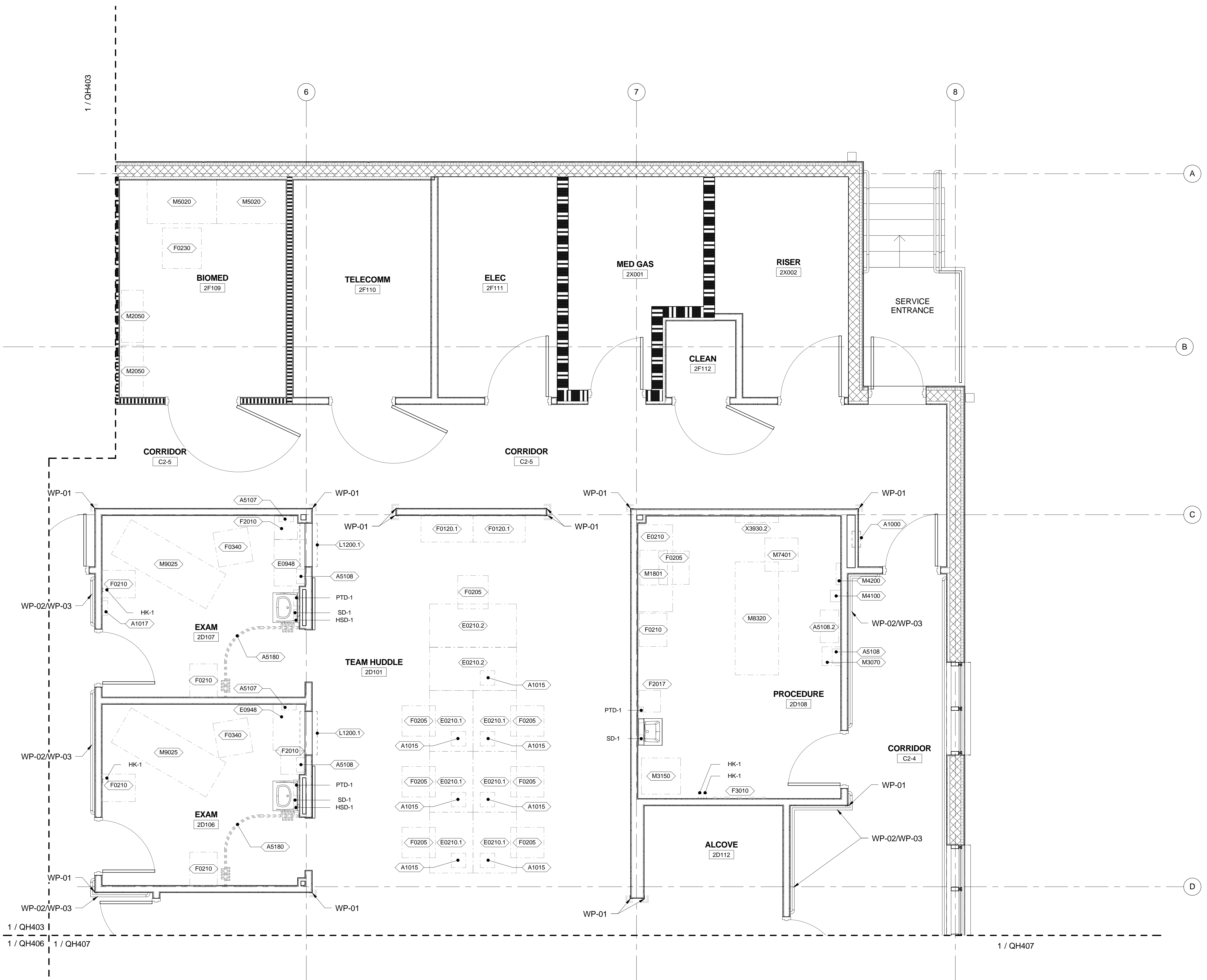
KEY PLAN



LEVEL 1: 3673.5'
 LEVEL 2: 3691.5'

BID DOCUMENTS FULLY SPRINKLERED

Revisions: Date:	CONSULTANTS:		ARCHITECT/ENGINEERS: BES DESIGN/BUILD, LLC 766 Middle St, Fairhope, AL 36532 Phone: 251.990.5778 Fax: 251.990.3716	Drawing Title: LEVEL 2 - AREA B EQUIPMENT PLAN	Project Title: PRIMARY CARE ADDITION PHASE 1	Project Number: 504-222 Building Number: 48 Drawing Number: QH403 Dwg. 76 of 137	 Department of Veterans Affairs
---------------------	---------------------	--	---	--	--	---	------------------------------------



1 LEVEL 2 - AREA C EQUIPMENT PLAN
3/8" = 1'-0"

GENERAL EQUIPMENT PLAN NOTES

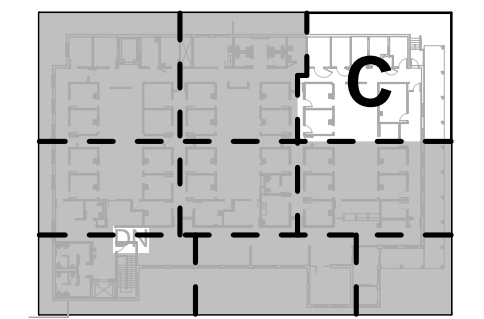
- A SEE 'EQUIPMENT MOUNTING LEGEND' ON SHEET GI003 FOR TOILET ACCESSORY MOUNTING REQUIREMENTS.
- B ALL DRAWERS AND CABINETS PATIENTS HAVE ACCESS TO NEED TO BE LOCKABLE.
- C JSN (JOINT SCHEDULE NUMBERS) ARE BASED ON MIL-STD 1691 MASTER EQUIPMENT LIST
- D SEE DETAILS 2, 3, 4, & 6 ON SHEET AE516 FOR WALL PROTECTION (WP-01, WP-02, & WP-03) DETAILS.

EQUIPMENT SCHEDULE

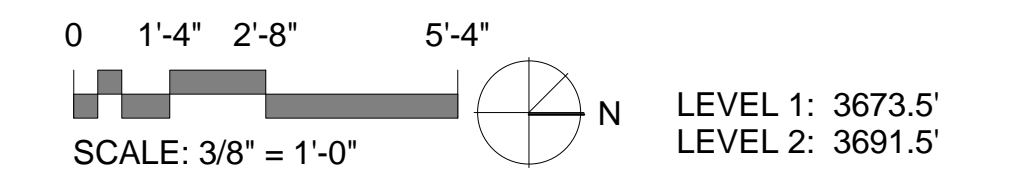
JSN	DESCRIPTION	JSN ACQ/INS ASSIGNMENT
A-ARCHITECTURAL		
A1000	CABINET; FIRE EXTINGUISHER; RECESSED	C/C
A1015	TELEPHONE; DESK; MULTIPLE LINE	V/V
A1017	TELEPHONE; WALL MOUNTED; MULTIPLE LINE	V/V
A5107	DISPENSER; GLOVE; SURGICAL/EXAMINATION; WALL MNTD	V/V
A5108	WASTE DISPOSAL UNIT; SHARPS	V/V
A5108.2	WASTE DISPOSAL UNIT; SHARPS; MOBILE; 18 GALLON	V/V
A5180	CUBICAL CURTAIN	C/C
E-MODULAR CASEWORK		
E0210	WORKSURFACE; W/OVERHEAD CAB; WALL MTD; 48 W	V/V
E0210.1	WORKSTATION; HUDDLE; 42"	V/V
E0210.2	WORKSTATION; HUDDLE; 60"	V/V
E0948	CART; GENERAL STORAGE; MOBILE	V/V
F-FURNITURE AND FURNISHINGS		
F0120.1	BOOKCASE; EXECUTIVE; 5 SHELF; WOOD	V/V
F0205	CHAIR; SIDE; WITH ARMS	V/V
F0210	CHAIR; SIDE; WITHOUT ARMS	V/V
F0230	CHAIR; DRAFTING; ROTARY	V/V
F0340	STOOL; SELF ADJUSTING	V/V
F2010	BASKET; WASTE; STEP-ON; RECTANGULAR; PLASTIC	V/V
F2017	WASTE RECEPTACLE; 24 GAL	V/V
F3010	BOARD; BULLETIN 36 WIDE	V/V
L-LABORATORY EQUIPMENT		
L1200.1	CABINET; PASS THRU; WALL MOUNTED	C/C
M-MISCELLANEOUS		
M1801	COMPUTER; MICROPROCESSING; W/FLAT PANEL MONITOR	V/V
M2050	SHELVING; STORAGE; 75H X 36W X 14D	V/V
M3070	HAMPER; LINEN; MOBILE; W/LID	V/V
M3150	DISTRIBUTION SYSTEM; MEDICATION; AUTOMATIC	V/V
M4100	SPHYGMOMANOMETER; WALL MOUNTED	V/V
M4200	OTOSCOPE / OPHTHALMOSCOPE; WALL MOUNTED	V/V
M5020	WORKBENCH; FABRICATION/MAINTENANCE	V/V
M7401	LIGHT; EXAM; MOBILE; SPOTLIGHT; MOBILE STAND	V/V
M8320	TABLE; TREATMENT; HI/LO	V/V
M9025	TABLE; EXAMINATION/TREATMENT; WITH CABINET	V/V
X-XRAY EQUIPMENT AND ACCESSORIES		
X3930.2	ILLUMINATOR; FILM; DOUBLE; WALL MOUNTED	V/V

TOILET ACCESSORY SCHEDULE

JSN	DESCRIPTION	JSN ACQ/INS ASSIGNMENT
TA-TOILET ACCESSORY		
HK-1	A5145 HOOK; GARMENT; DOUBLE; SS; SURFACE MOUNTED	C/C
HSD-1	A5071 DISPENSER; HAND SANITIZER; SURFACE MOUNTED; DISPOSAL	V/V
PTD-1	A5080 DISPENSER; PAPER TOWEL; SS; SURFACE MOUNTED	V/V
SD-1	A5075 DISPENSER; SOAP; DISPOSABLE	V/V



KEY PLAN

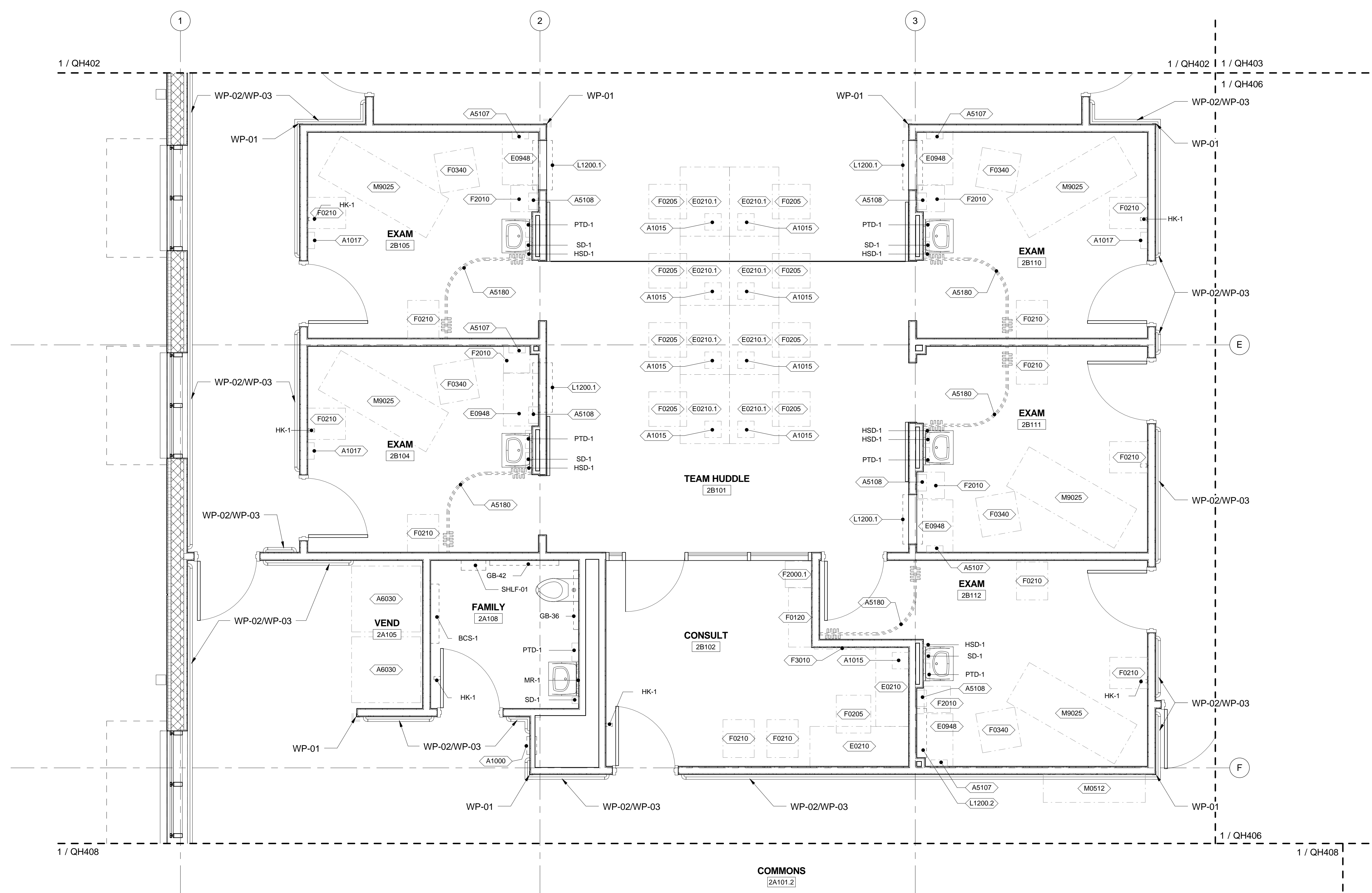


LEVEL 1: 3673.5'
LEVEL 2: 3691.5'

BID DOCUMENTS FULLY SPRINKLERED

<p>CONSULTANTS:</p>		<p>ARCHITECT/ENGINEERS:</p> <p>BES DESIGN/BUILD</p> <p>BES DESIGN/BUILD, LLC 766 Middle St, Fairhope, AL 36532 Phone: 251.990.5778 Fax: 251.990.3716</p>	<p>Drawing Title LEVEL 2 - AREA C EQUIPMENT PLAN</p> <p>Approved: Project Director</p>	<p>Project Title PRIMARY CARE ADDITION PHASE 1</p> <p>Location THOMAS CREEK VA MEDICAL CENTER AMARILLO, TEXAS</p> <p>Date 2015.05.15</p> <p>Drawn JDB</p> <p>Checked RWC</p>	<p>Project Number 504-222</p> <p>Building Number 48</p> <p>Drawing Number QH404</p> <p>Dwg. 77 of 137</p>	<p>AMARILLO VA HEALTH CARE SYSTEM</p>
---------------------	--	---	---	--	--	--

A three inches = one foot
 B one and one half inches = one foot
 C one inch = one foot
 D three quarters inch = one foot
 E one half inch = one foot
 F three eighths inch = one foot
 G one quarter inch = one foot
 H one eighth inch = one foot



1 LEVEL 2 - AREA D EQUIPMENT PLAN
 3/8" = 1'-0"

GENERAL EQUIPMENT PLAN NOTES

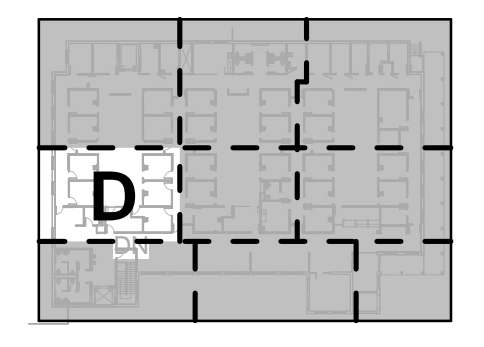
- A SEE 'EQUIPMENT MOUNTING LEGEND' ON SHEET G1003 FOR TOILET ACCESSORY MOUNTING REQUIREMENTS.
- B ALL DRAWERS AND CABINETS PATIENTS HAVE ACCESS TO NEED TO BE LOCKABLE.
- C JSN (JOINT SCHEDULE NUMBERS) ARE BASED ON MIL-STD 1691 MASTER EQUIPMENT LIST
- D SEE DETAILS 2, 3, 4, & 6 ON SHEET AE516 FOR WALL PROTECTION (WP-01, WP-02, & WP-03) DETAILS.

EQUIPMENT SCHEDULE

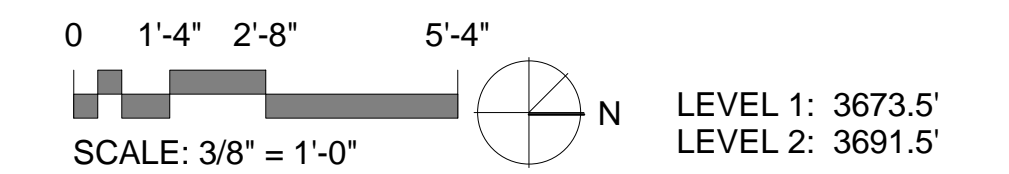
JSN	DESCRIPTION	JSN ACQ/INS ASSIGNMENT
A-ARCHITECTURAL		
A1000	CABINET; FIRE EXTINGUISHER; RECESSED	C/C
A1015	TELEPHONE; DESK; MULTIPLE LINE	V/V
A1017	TELEPHONE; WALL MOUNTED; MULTIPLE LINE	V/V
A5107	DISPENSER; GLOVE; SURGICAL/EXAMINATION; WALL MNTD	V/V
A5108	WASTE DISPOSAL UNIT; SHARPS	V/V
A5180	CUBICAL CURTAIN	C/C
A6030	MACHINE; VENDING	V/V
E-MODULAR CASEWORK		
E0210	WORKSURFACE; W/OVERHEAD CAB; WALL MTD; 48 W	V/V
E0210.1	WORKSTATION; HUDDLE; 42"	V/V
E0948	CART; GENERAL STORAGE; MOBILE	V/V
F-FURNITURE AND FURNISHINGS		
F0120	BOOKCASE; EXECUTIVE; 3 SHELF; WOOD	V/V
F0205	CHAIR; SIDE; WITH ARMS	V/V
F0210	CHAIR; SIDE; WITHOUT ARMS	V/V
F0340	STOOL; SELF ADJUSTING	V/V
F2000.1	BASKET; WASTE/PAPER; ROUND; METAL	V/V
F2010	BASKET; WASTE; STEP-ON; RECTANGULAR; PLASTIC	V/V
F3010	BOARD; BULLETIN 36 WIDE	V/V
F3200	CLOCK; BATTERY; 12 DIAMETER	V/V
L-LABORATORY EQUIPMENT		
L1200.1	CABINET; PASS THRU; WALL MOUNTED	C/C
L1200.2	CABINET; WALL MOUNTED	C/C
M-MISCELLANEOUS		
M0512	TELEVISION; HDTV 60"	V/V
M9025	TABLE; EXAMINATION/TREATMENT; WITH CABINET	V/V

TOILET ACCESSORY SCHEDULE

JSN	DESCRIPTION	JSN ACQ/INS ASSIGNMENT
TA-TOILET ACCESSORY		
BCS-1	A4995 TABLE; DIAPER CHANGING; WALL MOUNTED	C/C
GB-36	A5109 GRAB BAR; 1-1/4 DIA.; SS; 2 WALL; W/C ACCESSIBLE	C/C
GB-42	A5109 GRAB BAR; 1-1/4 DIA.; SS; 2 WALL; W/C ACCESSIBLE	C/C
HK-1	A5145 HOOK; GARMENT; DOUBLE; SS; SURFACE MOUNTED	C/C
HSD-1	A5071 DISPENSER; HAND SANITIZER; SURFACE MOUNTED; DISPOSAL	V/V
MR-1	A1066 MIRROR; FLOAT GLASS; WITH SS FRAME	C/C
PTD-1	A5080 DISPENSER; PAPER TOWEL; SS; SURFACE MOUNTED	V/V
SD-1	A5075 DISPENSER; SOAP; DISPOSABLE	V/V
SHLF-01	SHELF; FOLD DOWN; STAINLESS STEEL	C/C
TPD-1	A5200 DISPENSER; TOILET TISSUE; SS; 2-ROLL; SURFACE MNTD	V/V



KEY PLAN



LEVEL 1: 3673.5'
 LEVEL 2: 3691.5'

BID DOCUMENTS FULLY SPRINKLERED

CONSULTANTS: Revisions: _____ Date _____		ARCHITECT/ENGINEERS: BES DESIGN/BUILD, LLC 766 Middle St, Fairhope, AL 36532 Phone: 251.990.5778 Fax: 251.990.3716	Drawing Title LEVEL 2 - AREA D EQUIPMENT PLAN Approved: Project Director	Project Title PRIMARY CARE ADDITION PHASE 1 Location THOMAS CREEK VA MEDICAL CENTER AMARILLO, TEXAS Date 2015.05.15 Drawn JDB Checked RWC	Project Number 504-222 Building Number 48 Drawing Number QH405 Dwg. 78 of 137
---	--	--	---	--	--



A three inches = one foot
 B one and one half inches = one foot
 C one inch = one foot
 D three quarters inch = one foot
 E one half inch = one foot
 F three eighths inch = one foot
 G one quarter inch = one foot
 H one eighth inch = one foot

GENERAL EQUIPMENT PLAN NOTES

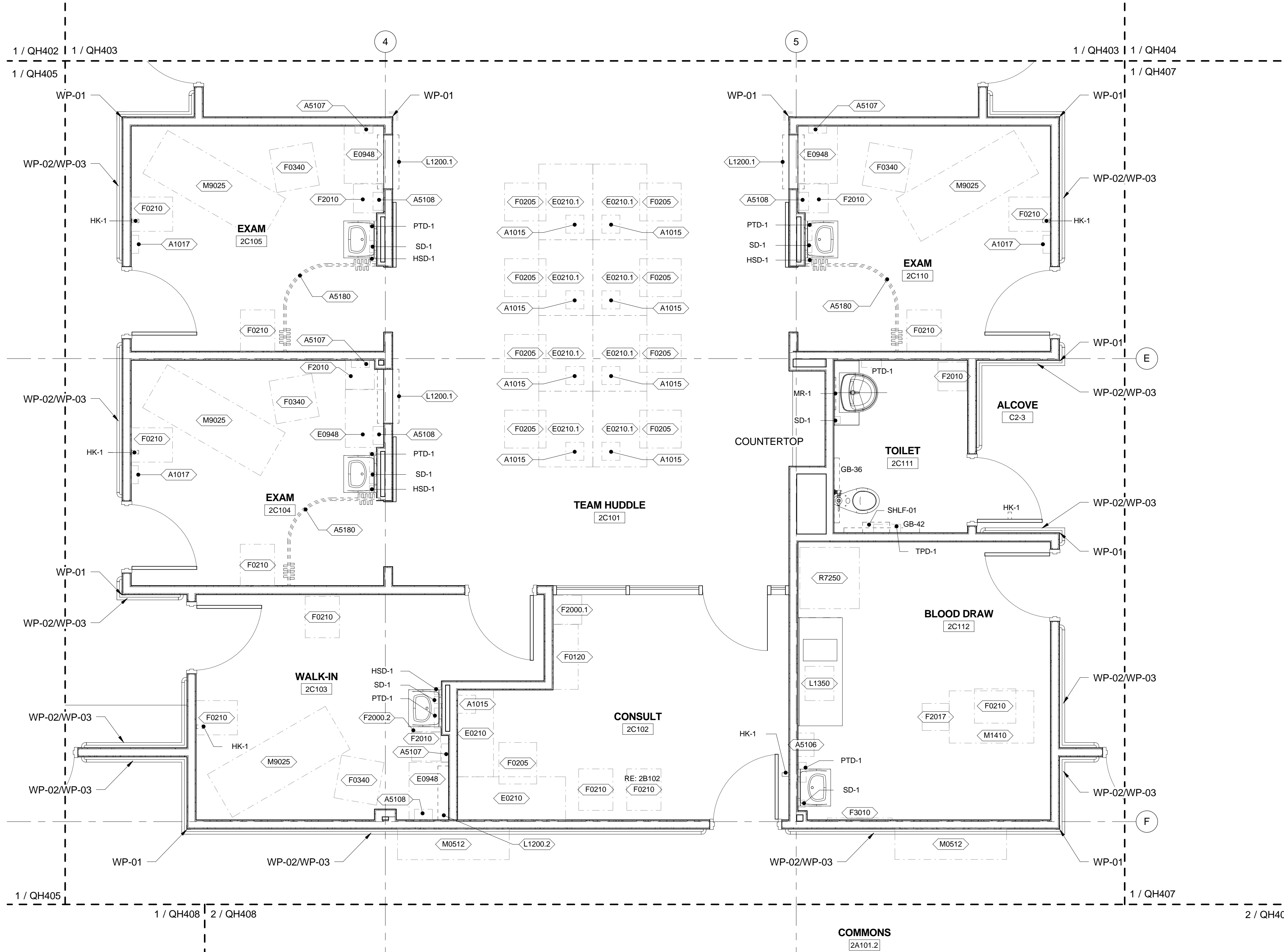
- A SEE 'EQUIPMENT MOUNTING LEGEND' ON SHEET GI003 FOR TOILET ACCESSORY MOUNTING REQUIREMENTS.
- B ALL DRAWERS AND CABINETS PATIENTS HAVE ACCESS TO NEED TO BE LOCKABLE.
- C JSN (JOINT SCHEDULE NUMBERS) ARE BASED ON MIL-STD 1691 MASTER EQUIPMENT LIST
- D SEE DETAILS 2, 3, 4, & 6 ON SHEET AE516 FOR WALL PROTECTION (WP-01, WP-02, & WP-03) DETAILS.

EQUIPMENT SCHEDULE

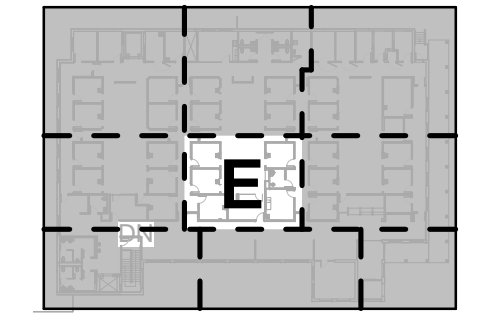
JSN	DESCRIPTION	JSN ACQ/INS ASSIGNMENT
A-ARCHITECTURAL		
A1015	TELEPHONE; DESK; MULTIPLE LINE	V/V
A1017	TELEPHONE; WALL MOUNTED; MULTIPLE LINE	V/V
A5106	WASTE DISPOSAL UNIT; SHARPS W/ GLOVE DISPENSER	V/V
A5107	DISPENSER; GLOVE; SURGICAL/EXAMINATION; WALL MNTD	V/V
A5108	WASTE DISPOSAL UNIT; SHARPS	V/V
A5180	CUBICAL CURTAIN	C/C
E-MODULAR CASEWORK		
E0210	WORKSURFACE; W/OVERHEAD CAB; WALL MTD; 48 W	V/V
E0210.1	WORKSTATION; HUDDLE; 42"	V/V
E0948	CART; GENERAL STORAGE; MOBILE	V/V
F-FURNITURE AND FURNISHINGS		
F0120	BOOKCASE; EXECUTIVE; 3 SHELF; WOOD	V/V
F0205	CHAIR; SIDE; WITH ARMS	V/V
F0210	CHAIR; SIDE; WITHOUT ARMS	V/V
F0340	STOOL; SELF ADJUSTING	V/V
F2000.1	BASKET; WASTEPAPER; ROUND; METAL	V/V
F2000.2	BASKET; WASTEPAPER; RECTANGULAR; PLASTIC	V/V
F2010	BASKET; WASTE; STEP-ON; RECTANGULAR; PLASTIC	V/V
F2017	WASTE RECEPTACLE; 24 GAL	V/V
F3010	BOARD; BULLETIN 36 WIDE	V/V
F3200	CLOCK; BATTERY; 12 DIAMETER	V/V
L-LABORATORY EQUIPMENT		
L1200.1	CABINET; PASS THRU; WALL MOUNTED	C/C
L1200.2	CABINET; WALL MOUNTED	C/C
L1350	CENTRIFUGE; TABLE; SMALL; 3200 RPM; 6 PLACE	V/V
M-MISCELLANEOUS		
M0512	TELEVISION, HDTV 60"	V/V
M1410	CHAIR; LABORATORY; BLOOD DRAWING; W/STORAGE	V/V
M9025	TABLE; EXAMINATION/TREATMENT; WITH CABINET	V/V
R-REFRIGERATION		
R7250	REFRIGERATOR/ FREEZER; 20 CUBIC FEET	V/V

TOILET ACCESSORY SCHEDULE

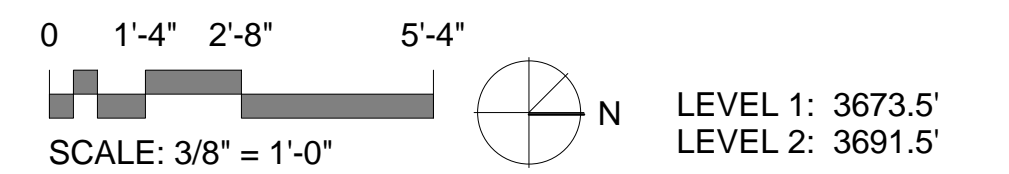
JSN	DESCRIPTION	JSN ACQ/INS ASSIGNMENT
TA-TOILET ACCESSORY		
HK-1	A5145 HOOK; GARMENT; DOUBLE; SS; SURFACE MOUNTED	C/C
HSD-1	A5071 DISPENSER; HAND SANITIZER; SURFACE MOUNTED; DISPOSAL	V/V
PTD-1	A5080 DISPENSER; PAPER TOWEL; SS; SURFACE MOUNTED	V/V
SD-1	A5075 DISPENSER; SOAP; DISPOSABLE	V/V



1 LEVEL 2 - AREA D EQUIPMENT PLAN
 3/8" = 1'-0"



KEY PLAN



BID DOCUMENTS FULLY SPRINKLERED

Revisions: _____ Date _____ Date	CONSULTANTS: 		ARCHITECT/ENGINEERS: BES DESIGN/BUILD, LLC 766 Middle St, Fairhope, AL 36532 Phone: 251.990.5778 Fax: 251.990.3716	Drawing Title: LEVEL 2 - AREA E EQUIPMENT PLAN Approved: Project Director _____	Project Title: PRIMARY CARE ADDITION PHASE 1 Location: THOMAS CREEK VA MEDICAL CENTER AMARILLO, TEXAS Date: 2015.05.15 Drawn: JDB Checked: RWC	Project Number: 504-222 Building Number: 48 Drawing Number: QH406 Dwg. 79 of 137	Department of Veterans Affairs
--	-----------------------------	--	---	---	---	---	--------------------------------

A three inches = one foot
 B one and one half inches = one foot
 C one inch = one foot
 D three quarters inch = one foot
 E one half inch = one foot
 F three eighths inch = one foot
 G one quarter inch = one foot
 H one eighth inch = one foot

GENERAL EQUIPMENT PLAN NOTES

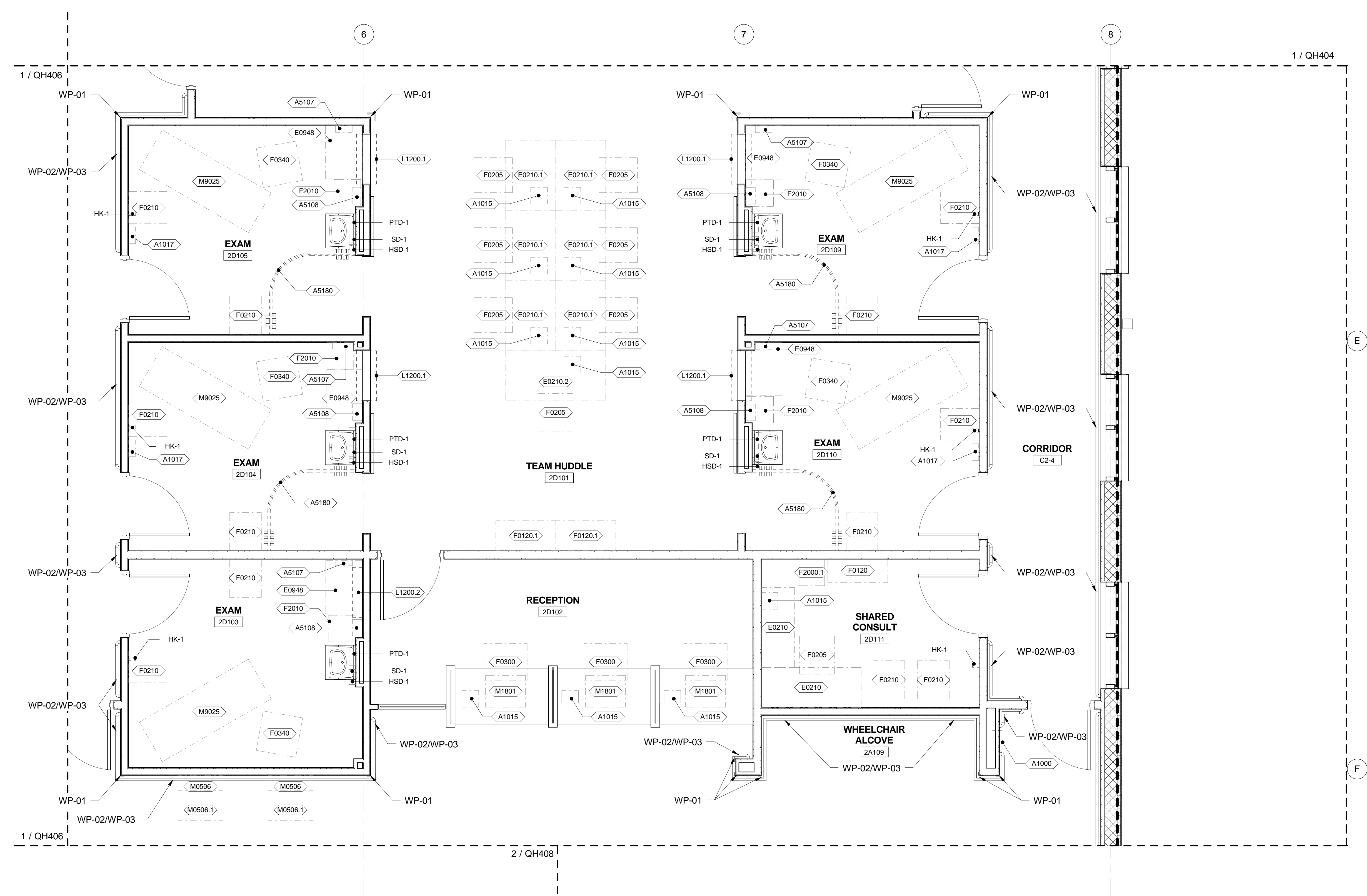
- A SEE 'EQUIPMENT MOUNTING LEGEND' ON SHEET G1003 FOR TOILET ACCESSORY MOUNTING REQUIREMENTS.
- B ALL DRAWERS AND CABINETS PATIENTS HAVE ACCESS TO NEED TO BE LOCKABLE.
- C JSN (JOINT SCHEDULE NUMBERS) ARE BASED ON MIL-STD 1691 MASTER EQUIPMENT LIST
- D SEE DETAILS 2, 3, 4, & 6 ON SHEET AE516 FOR WALL PROTECTION (WP-01, WP-02, & WP-03) DETAILS.

EQUIPMENT SCHEDULE

JSN	DESCRIPTION	JSN ACQ/INS ASSIGNMENT
A-ARCHITECTURAL		
A1000	CABINET; FIRE EXTINGUISHER; RECESSED	C/C
A1015	TELEPHONE; DESK; MULTIPLE LINE	V/V
A1017	TELEPHONE; WALL MOUNTED; MULTIPLE LINE	V/V
A5107	DISPENSER; GLOVE; SURGICAL/EXAMINATION; WALL MNTD	V/V
A5108	WASTE DISPOSAL UNIT; SHARPS	V/V
A5180	CUBICAL CURTAIN	C/C
E-MODULAR CASEWORK		
E0210	WORKSURFACE; W/OVERHEAD CAB; WALL MTD; 48 W	V/V
E0210.1	WORKSTATION; HUDDLE; 42"	V/V
E0210.2	WORKSTATION; HUDDLE; 60"	V/V
E0948	CART; GENERAL STORAGE; MOBILE	V/V
F-FURNITURE AND FURNISHINGS		
F0120	BOOKCASE; EXECUTIVE; 3 SHELF; WOOD	V/V
F0120.1	BOOKCASE; EXECUTIVE; 5 SHELF; WOOD	V/V
F0205	CHAIR; SIDE; WITH ARMS	V/V
F0210	CHAIR; SIDE; WITHOUT ARMS	V/V
F0300	CHAIR; TASK; SWIVEL; WITH ARMS	V/V
F0340	STOOL; SELF ADJUSTING	V/V
F2000.1	BASKET; WASTEPAPER; ROUND; METAL	V/V
F2010	BASKET; WASTE; STEP-ON; RECTANGULAR; PLASTIC	V/V
L-LABORATORY EQUIPMENT		
L1200.1	CABINET; PASS THRU; WALL MOUNTED	C/C
L1200.2	CABINET; WALL MOUNTED	C/C
M-MISCELLANEOUS		
M0506	TELEVISION; FLAT SCREEN	V/V
M0506.1	INTERACTIVE KIOSK	V/V
M1801	COMPUTER; MICROPROCESSING; W/FLAT PANEL MONITOR	V/V
M9025	TABLE; EXAMINATION/TREATMENT; WITH CABINET	V/V

TOILET ACCESSORY SCHEDULE

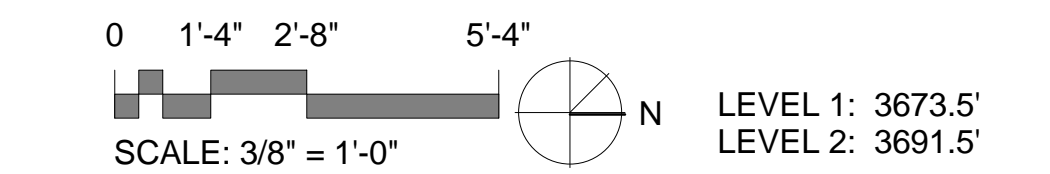
JSN	DESCRIPTION	JSN ACQ/INS ASSIGNMENT
TA-TOILET ACCESSORY		
HK-1	A5145 HOOK; GARMENT; DOUBLE; SS; SURFACE MOUNTED	C/C
HSD-1	A5071 DISPENSER; HAND SANITIZER; SURFACE MOUNTED; DISPOSAL	V/V
PTD-1	A5080 DISPENSER; PAPER TOWEL; SS; SURFACE MOUNTED	V/V
SD-1	A5075 DISPENSER; SOAP; DISPOSABLE	V/V



1 LEVEL 2 - AREA F EQUIPMENT PLAN
 3/8" = 1'-0"



KEY PLAN

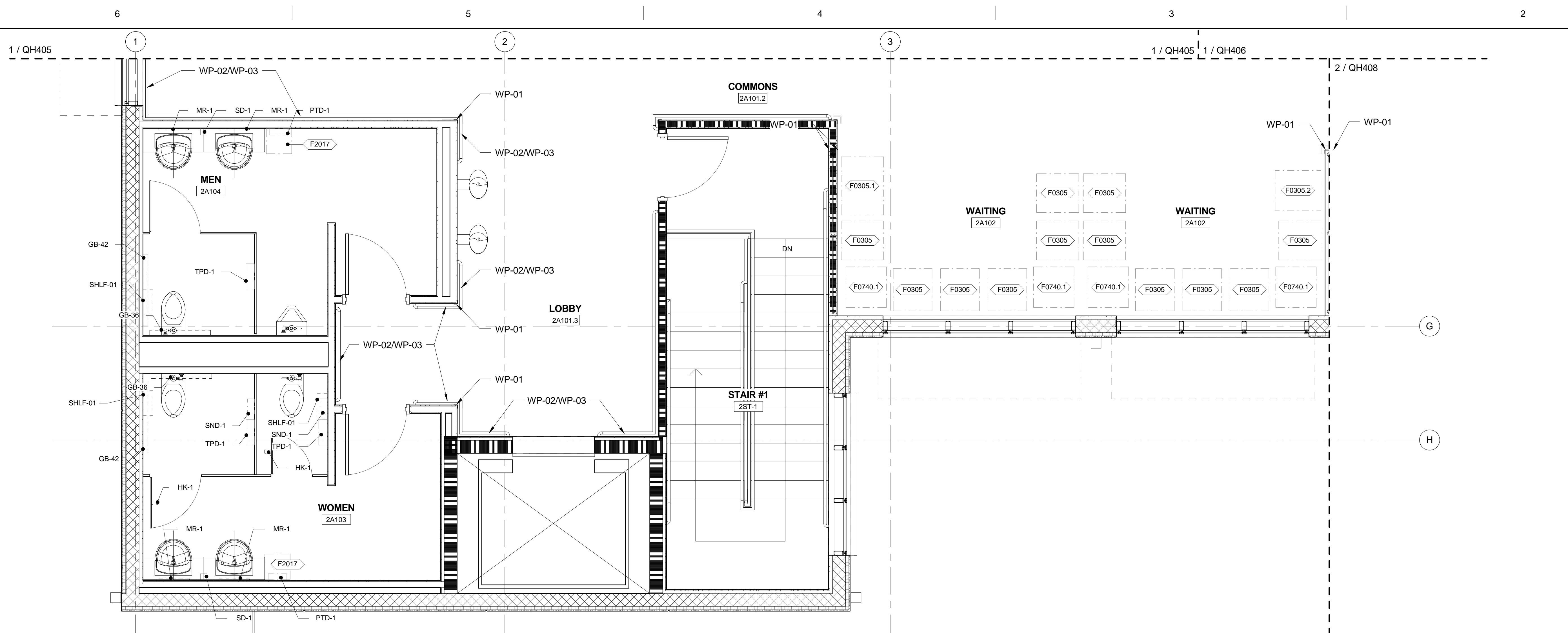


LEVEL 1: 3673.5'
 LEVEL 2: 3691.5'

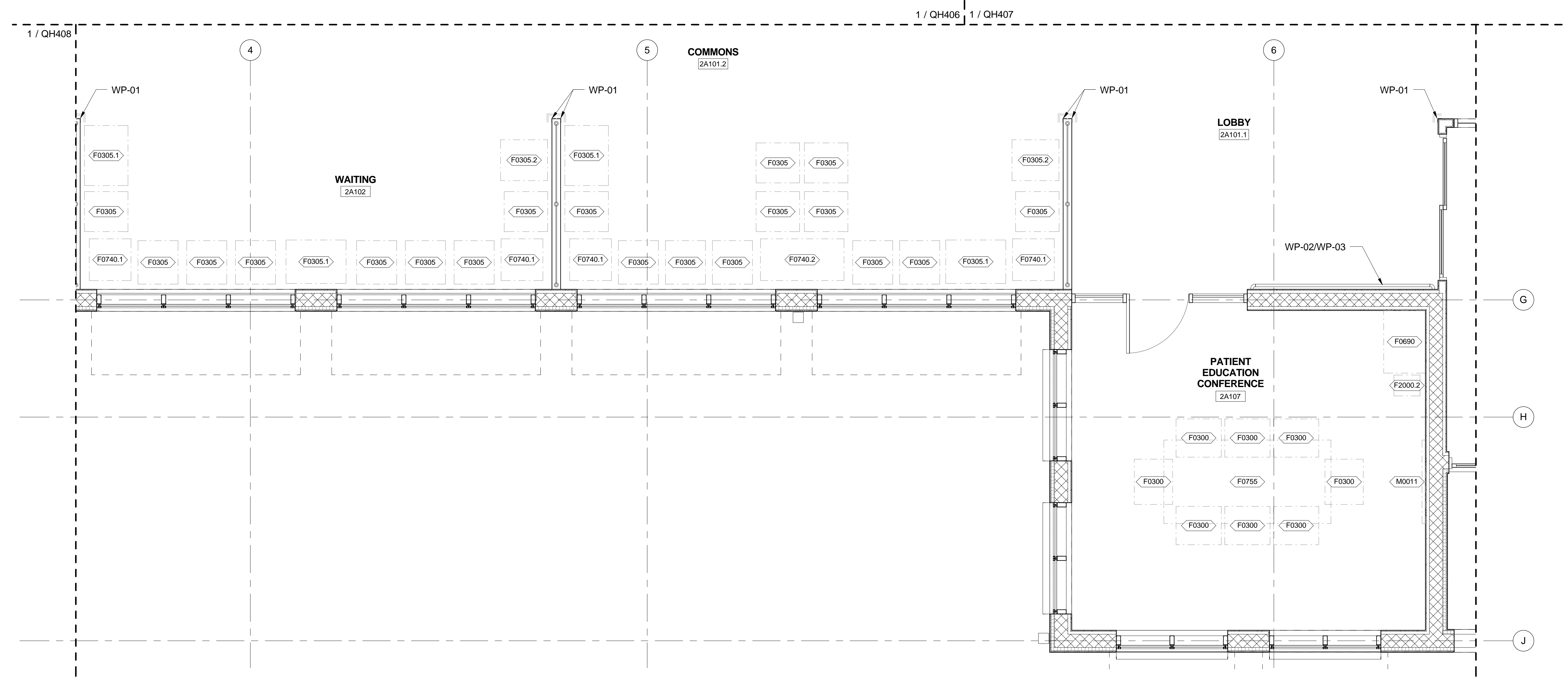
BID DOCUMENTS FULLY SPRINKLERED

<p>Revisions:</p> <table border="1"> <tr> <th>No.</th> <th>Description</th> <th>Date</th> </tr> <tr> <td> </td> <td> </td> <td> </td> </tr> </table>	No.	Description	Date				<p>CONSULTANTS:</p>		<p>ARCHITECT/ENGINEERS:</p> <p>BES DESIGN/BUILD, LLC 766 Middle St, Fairhope, AL 36532 Phone: 251.990.5778 Fax: 251.990.3716</p>	<p>Drawing Title LEVEL 2 - AREA F EQUIPMENT PLAN</p> <p>Approved: Project Director</p>	<p>Project Title PRIMARY CARE ADDITION PHASE 1</p> <p>Location THOMAS CREEK VA MEDICAL CENTER AMARILLO, TEXAS</p> <p>Date 2015.05.15</p>	<p>Project Number 504-222</p> <p>Building Number 48</p> <p>Drawing Number QH407</p> <p>Dwg. 80 of 137</p>	<p>AMARILLO VA HEALTH CARE SYSTEM</p>
No.	Description	Date											

A three inches = one foot
 B one and one half inches = one foot
 C one inch = one foot
 D three quarters inch = one foot
 E one half inch = one foot
 F three eighths inch = one foot
 G one quarter inch = one foot
 H one eighth inch = one foot



1 LEVEL 2 - AREA G EQUIPMENT PLAN
3/8" = 1'-0"



2 LEVEL 2 - AREA H EQUIPMENT PLAN
3/8" = 1'-0"

GENERAL EQUIPMENT PLAN NOTES

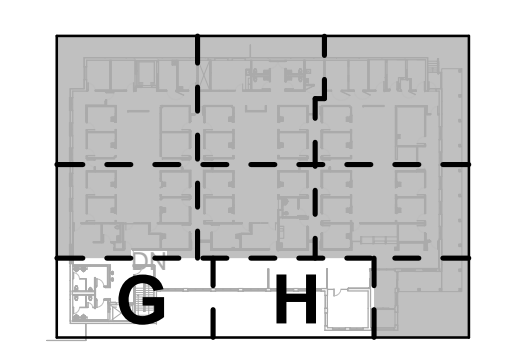
- A SEE 'EQUIPMENT MOUNTING LEGEND' ON SHEET GI003 FOR TOILET ACCESSORY MOUNTING REQUIREMENTS.
- B ALL DRAWERS AND CABINETS PATIENTS HAVE ACCESS TO NEED TO BE LOCKABLE.
- C JSN (JOINT SCHEDULE NUMBERS) ARE BASED ON MIL-STD 1691 MASTER EQUIPMENT LIST
- D SEE DETAILS 2, 3, 4, & 6 ON SHEET AE516 FOR WALL PROTECTION (WP-01, WP-02, & WP-03) DETAILS.

EQUIPMENT SCHEDULE

JSN	DESCRIPTION	JSN ACQ/INS ASSIGNMENT
F-FURNITURE AND FURNISHINGS		
F0300	CHAIR; TASK; SWIVEL; WITH ARMS	V/V
F0305	CHAIR; WAITING ROOM; SINGLE	V/V
F0305.1	CHAIR; WAITING ROOM; SINGLE BARIATRIC	V/V
F0305.2	CHAIR; WAITING ROOM; SINGLE HIP	V/V
F0690	WORKSTATION; COMPUTER; ENCLOSED; WITH LOCK	V/V
F0740.1	TABLE; OCCASIONAL; LAMP	V/V
F0740.2	TABLE; OCCASIONAL; LAMP	V/V
F0755	TABLE; CONFERENCE; WOOD	V/V
F2000.2	BASKET; WASTE/PAPER; RECTANGULAR; PLASTIC	V/V
F2017	WASTE RECEPTACLE; 24 GAL	V/V
M-MISCELLANEOUS		
M0011	SMARTBOARD; INTERACTIVE	V/V

TOILET ACCESSORY SCHEDULE

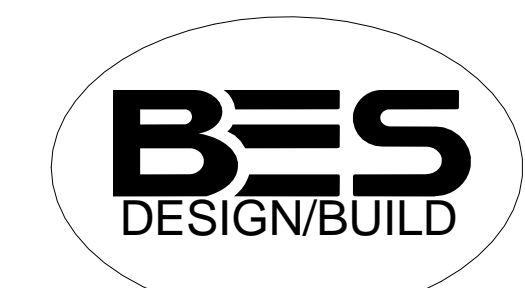
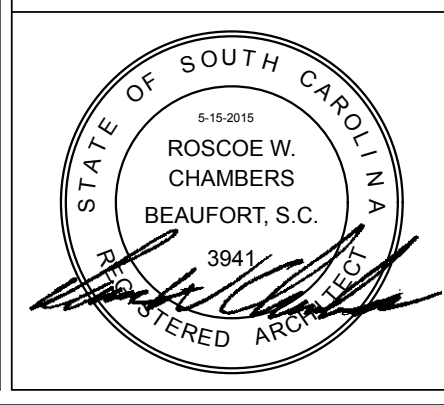
JSN	DESCRIPTION	JSN ACQ/INS ASSIGNMENT
TA-TOILET ACCESSORY		
GB-36	A5109 GRAB BAR; 1-1/4 DIA.; SS; 2 WALL; W/C ACCESSIBLE	C/C
GB-42	A5109 GRAB BAR; 1-1/4 DIA.; SS; 2 WALL; W/C ACCESSIBLE	C/C
HK-1	A5145 HOOK; GARMENT; DOUBLE; SS; SURFACE MOUNTED	C/C
MR-1	A1066 MIRROR; FLOAT GLASS; WITH SS FRAME	C/C
PTD-1	A5080 DISPENSER; PAPER TOWEL; SS; SURFACE MOUNTED	V/V
SD-1	A5075 DISPENSER; SOAP; DISPOSABLE	V/V
SHLF-01	SHELF; FOLD DOWN; STAINLESS STEEL	C/C
SND-1	A5090 - DISPOSAL, SANITARY NAPKINS; SURFACE MNTD	V/V
TPD-1	A5200 DISPENSER; TOILET TISSUE; SS; 2-ROLL; SURFACE MNTD	V/V



0 1'-4" 2'-8" 5'-4"
 SCALE: 3/8" = 1'-0"
 LEVEL 1: 3673.5'
 LEVEL 2: 3691.5'

CONSULTANTS:

ARCHITECT/ENGINEERS:



BES DESIGN/BUILD, LLC
 766 Middle St, Fairhope, AL 36532
 Phone: 251.990.5778
 Fax: 251.990.3716

Drawing Title
LEVEL 2 - AREAS G & H EQUIPMENT PLANS

Approved: Project Director

Project Title
PRIMARY CARE ADDITION PHASE 1

Location
THOMAS CREEK VA MEDICAL CENTER AMARILLO, TEXAS

Date
2015.05.15

Drawn
JDB

Checked
RWC

Project Number
504-222

Building Number
48

Drawing Number
QH408

Dwg. 81 of 137

AMARILLO VA HEALTH CARE SYSTEM



MASTER TOILET ACCESSORY SCHEDULE

Table with columns: JSN, DESCRIPTION, JSN ACQ/INS ASSIGNMENT. Lists items like BCS-1, GB-36, GB-42, HK-1, HSD-1, MR-1, MR-2, PTD-1, RCK-1, SD-1, SHLF-01, SND-1, TPD-1.

GENERAL EQUIPMENT NOTES

- A SEE 'EQUIPMENT MOUNTING LEGEND' ON SHEET G1003 FOR TOILET ACCESSORY MOUNTING REQUIREMENTS.
B ALL DRAWERS AND CABINETS PATIENTS HAVE ACCESS TO NEED TO BE LOCKABLE.
C JSN (JOINT SCHEDULE NUMBERS) ARE BASED ON MIL-STD 1691 MASTER EQUIPMENT LIST
D SEE DETAILS 2, 3, 4, & 6 ON SHEET AE516 FOR WALL PROTECTION (WP-01, WP-02, & WP-03) DETAILS.

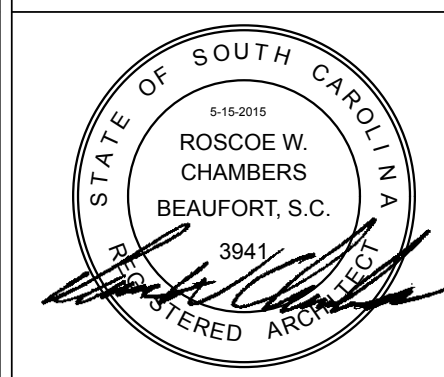
MASTER EQUIPMENT SCHEDULE

Table with columns: JSN, DESCRIPTION, JSN ACQ/INS ASSIGNMENT. Lists equipment categories: A-ARCHITECTURAL, E-MODULAR CASEWORK, F-FURNITURE AND FURNISHINGS, K-KITCHEN EQUIPMENT, L-LABORATORY EQUIPMENT, M-MISCELLANEOUS, R-REFRIGERATION, X-XRAY EQUIPMENT AND ACCESSORIES.



CONSULTANTS:

ARCHITECT/ENGINEERS:



BES DESIGN/BUILD, LLC
766 Middle St, Fairhope, AL 36532
Phone: 251.990.5778
Fax: 251.990.3716

Drawing Title: MASTER EQUIPMENT SCHEDULE

Project Title: PRIMARY CARE ADDITION PHASE 1

Project Number: 504-222
Building Number: 48

Approved: Project Director

Location: THOMAS CREEK VA MEDICAL CENTER AMARILLO, TEXAS

Drawing Number: QH601

Date: 2015.05.15

Drawn: JDB, Checked: RWC

Dwg. 82 of 137

BID DOCUMENTS FULLY SPRINKLERED
AMARILLO VA HEALTH CARE SYSTEM
Department of Veterans Affairs