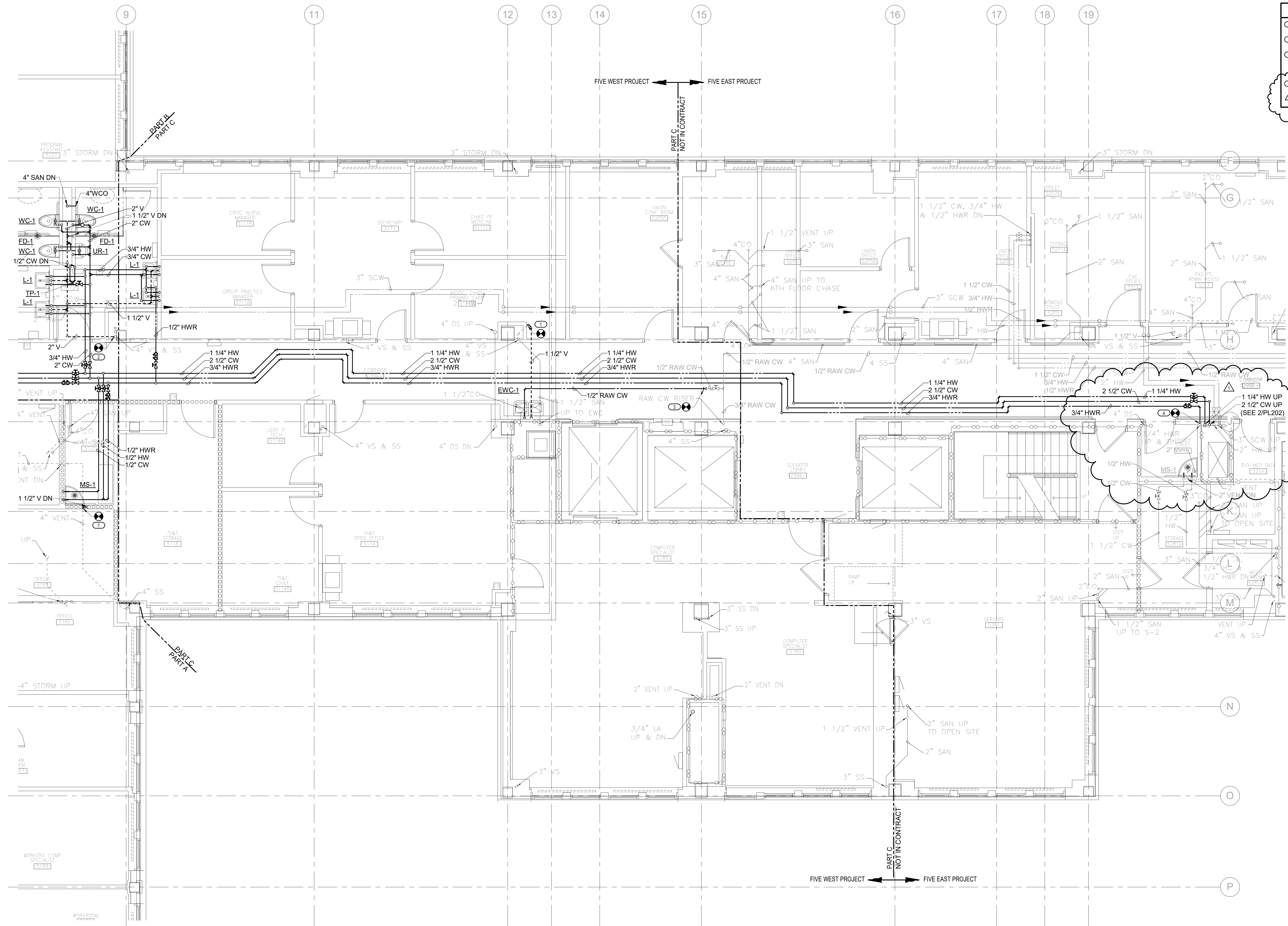
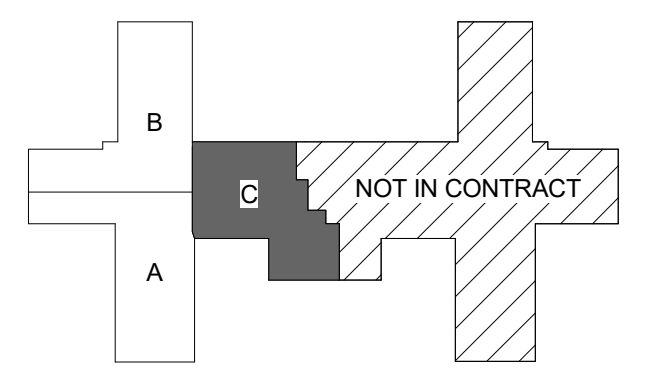


- KEYED NOTES**
- ① CONNECT NEW 1 1/2" VENT TO EXISTING VENT.
 - ② CONNECT NEW 2" VENT TO EXISTING VENT.
 - ③ PROVIDE 1/2" RAW CW CAPPED AND VALVED FOR FUTURE. VERIFY SIZE AND LOCATION OF EXISTING VALVE.
 - ④ CONNECT NEW 3/4" HWR TO EXISTING HWR MAIN IN CHASE ABOVE CIRCULATION PUMP. VERIFY SIZE & LOCATION OF EXISTING MAIN.



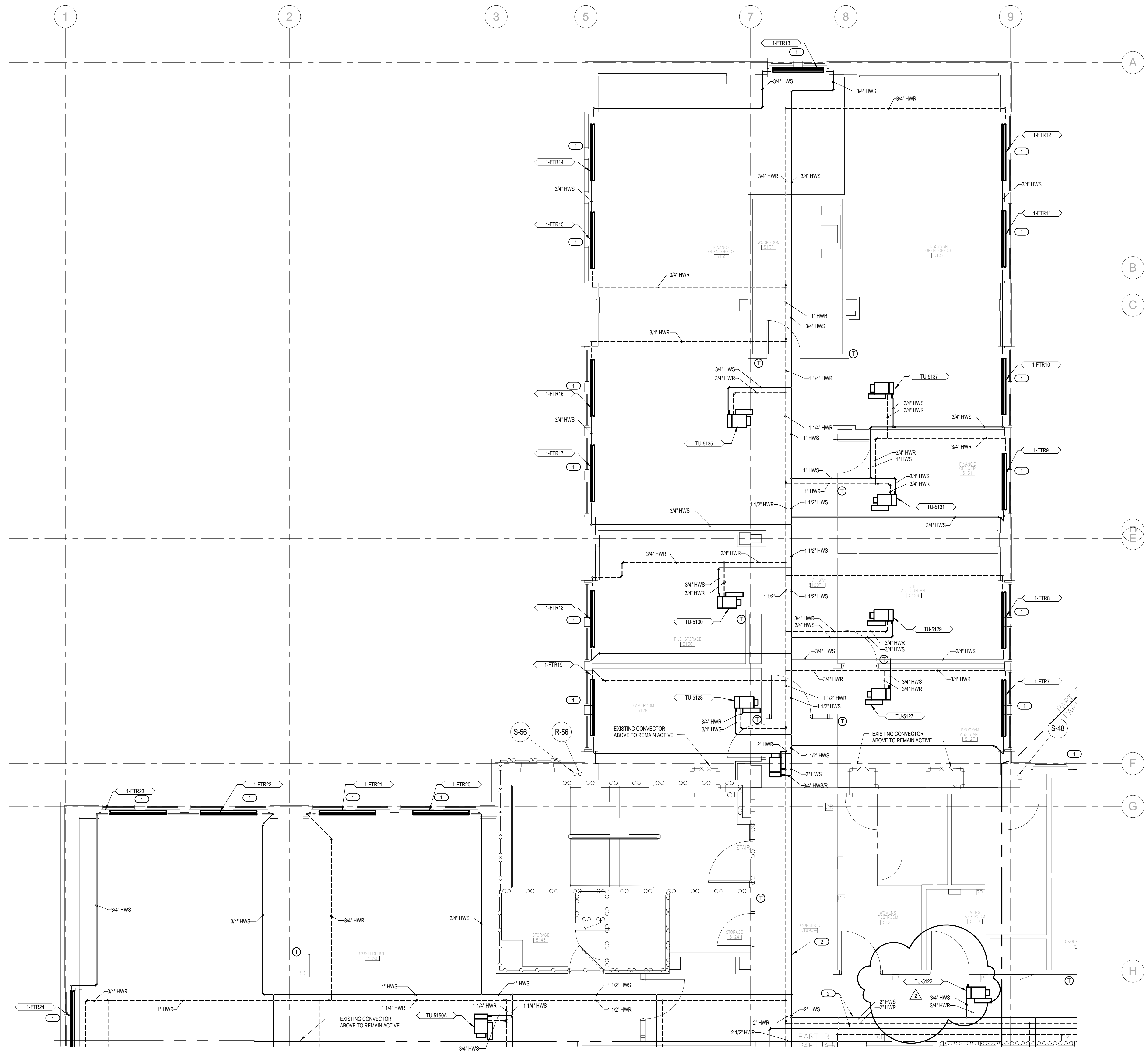
1 5TH FLOOR PLUMBING PLAN - PART C
1/4" = 1'-0"



KEY PLAN
NOT TO SCALE

Addendum #1 Revisions:	12/08/2017 Date	CONSULTANTS: engineers consultants commissioning MEP Associates, LLC 2750 Arbor Court Eau Claire, WI 54701 Phone: 715.832.5680 Fax: 715.832.5668 www.mepassociates.com MEP PROJECT NO.: N08.13.04	 ARCHITECT/ENGINEERS: 420 RAIL STREET NEGAUNEE, MI 49866 PHONE: 906-475-6616 FAX: 906-475-6954 NDW PROJECT NUMBER: 1210	Drawing Title 5TH FLOOR PLUMBING PLAN - PART C - WEST	Project Title Renovate Five West	Project Number 585-12-113	Office of Construction and Facilities Management
	Approved: Project Director			Location IRON MOUNTAIN, MICHIGAN	Building Number 1	Drawing Number PL203	

three inches = one foot
 one and one half inches = one foot
 one inch = one foot
 three quarters inch = one foot
 one half inch = one foot
 three eighths inch = one foot
 one quarter inch = one foot
 one eighth inch = one foot
 one sixteenth inch = one foot

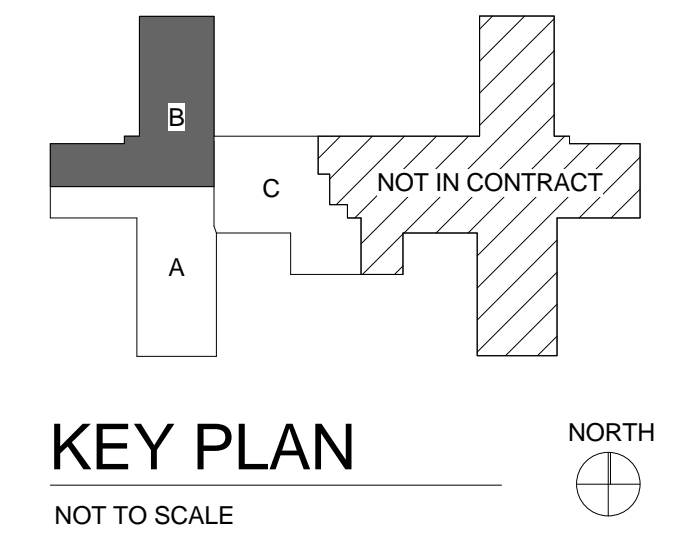


GENERAL NOTES


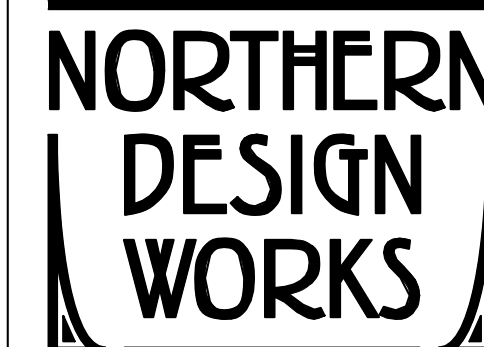

- SEE ARCHITECTURAL SHEET A002 LIFE SAFETY PLAN FOR FIRE/SMOKE RATINGS. ALL PIPES THROUGH RATED WALLS SHALL BE SEALED WITH AN APPROVED PENETRATION ASSEMBLY. SEE SPECIFICATION FOR MORE INFORMATION.
- A FULL TEST AND BALANCE OF THE WATERSIDE SYSTEM SHALL BE PERFORMED AFTER EACH PHASE OF WORK AND THEN A FINAL FULL (NOT PARTIAL) TEST AND BALANCE OF ALL FIFTH FLOOR SERVED BY AHU-11 AND ERU-2 SHALL OCCUR. THIS SHALL INCLUDE A FINAL TEST AND BALANCE OF EACH DUCT TAKEOFF OFF THE RISERS FOR AHU-11 AND ERU-2 ON ALL FLOORS. THE INTENT IS TO MAKE SURE ALL EXISTING AND NEW SPACE SERVED BY THESE SPACE REMAIN AT CURRENT/DESIGN CONDITIONS WHILE WORK IS BE PERFORMED.
- SEE DETAIL SHEET FOR TERMINAL UNIT PIPING DETAIL.
- PROVIDE BALANCING VALVE ON RETURN FOR EACH HOT WATER CONVECTOR.

KEYED NOTES
 (NOTES PERTAIN TO MP102 - MP104)

- NEW HOT WATER CONVECTOR, ENCLOSURE AND COVER. PROVIDE RECESSED FRAMING AND RETROFIT EXISTING OPENING AS REQUIRED FOR INSTALLATION.
- PROVIDE CAP AT PHASE BOUNDARY.
- PROVIDE HOT WATER SUPPLY TAKEOFF IN CEILING AND CAP. THIS WILL SERVE FUTURE HOT WATER FINNED TUBE RADIATION ON 6TH FLOOR.
- PROVIDE HOT WATER RETURN TAKEOFF AND ASSOCIATED CONTROL VALVE. THIS WILL SERVE FUTURE HOT WATER FINNED TUBE RADIATION ON 6TH FLOOR.
- 4\"/>



1 5TH FLOOR MECHANICAL PIPING PLAN - PART B
 1/4" = 1'-0"

<p>CONSULTANTS:</p>  <p>engineers consultants commissioning MEP Associates, LLC 2750 Arbor Court Eau Claire, WI 54701 Phone: 715.832.5580 Fax: 715.832.5668 www.mepassociates.com MEP PROJECT NO.: N06.13.04</p>		<p>ARCHITECT/ENGINEERS:</p>  <p>420 RAIL STREET NEGAUNEE, MI 49866 PHONE: 906-475-6616 FAX: 906-475-6954 NDW PROJECT NUMBER: 1210</p>		<p>Drawing Title 5TH FLOOR MECHANICAL PIPING PLAN - PART B</p> <p>Approved: Project Director</p>		<p>Project Title Renovate Five West</p> <p>Location IRON MOUNTAIN, MICHIGAN</p>		<p>Project Number 585-12-113</p> <p>Building Number 1</p> <p>Drawing Number MP103 Dwg. 79 of 112</p>		<p>Office of Construction and Facilities Management</p> 	
<p>Addendum #1 Revisions:</p>		<p>12/08/2017 Date</p>		<p>06/12/2017 Date</p>		<p>Checked JRM</p>		<p>Drawn AMD</p>		<p>12/08/2017 Date</p>	

