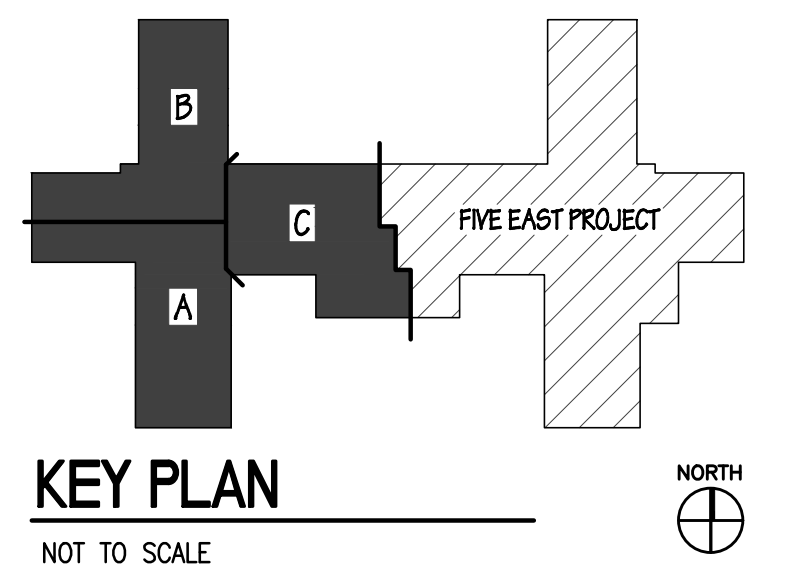


1 FIRE ALARM PLAN - OVERALL
1/8" = 1'-0"

KEYED NOTES	

GENERAL NOTES	
1.	SEE SHEET A003 FOR DETAILED PHASING PLAN.



one eighth inch = one foot
one quarter inch = one foot
one half inch = one foot
three eighths inch = one foot
three quarters inch = one foot
one inch = one foot
one and one half inches = one foot
two inches = one foot
three inches = one foot

Addendum #1	12/08/2017
100% Construction	06/12/2017
Revisions:	Date

CONSULTANTS:

engineers | consultants | commissioning
MEP Associates, LLC | 2750 Arbor Court | Eau Claire, WI 54701
Phone: 715.832.5680 | Fax: 715.832.5668 | www.mepassociates.com
MEP PROJECT NO.: N08.13.04



ARCHITECT/ENGINEERS:

420 RAIL STREET
NEGAUNEE, MI 49866
PHONE: 906-475-6616
FAX: 906-475-6954
NDW PROJECT NUMBER: 1210

Drawing Title ELECTRICAL FIRE ALARM PLAN FIFTH FLOOR WEST OVERALL	
Approved: Project Director	

Project Title Renovate Five West		Project Number 585-12-113	
Location IRON MOUNTAIN, MICHIGAN		Building Number 1	
Date 06/12/2017	Checked SW	Drawn TDM	Drawing Number FA100 Dwg. 108 of 111

Office of
Construction
and Facilities
Management

Department of
Veterans Affairs

