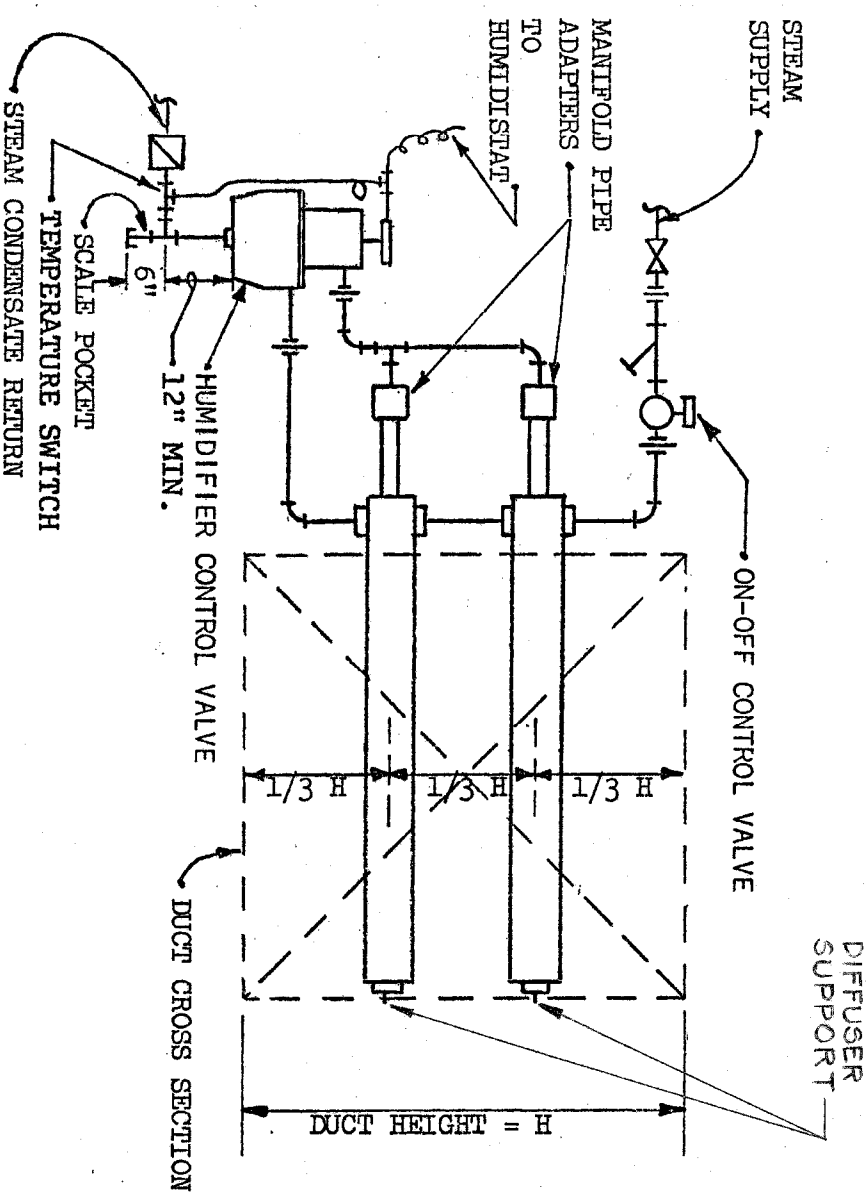
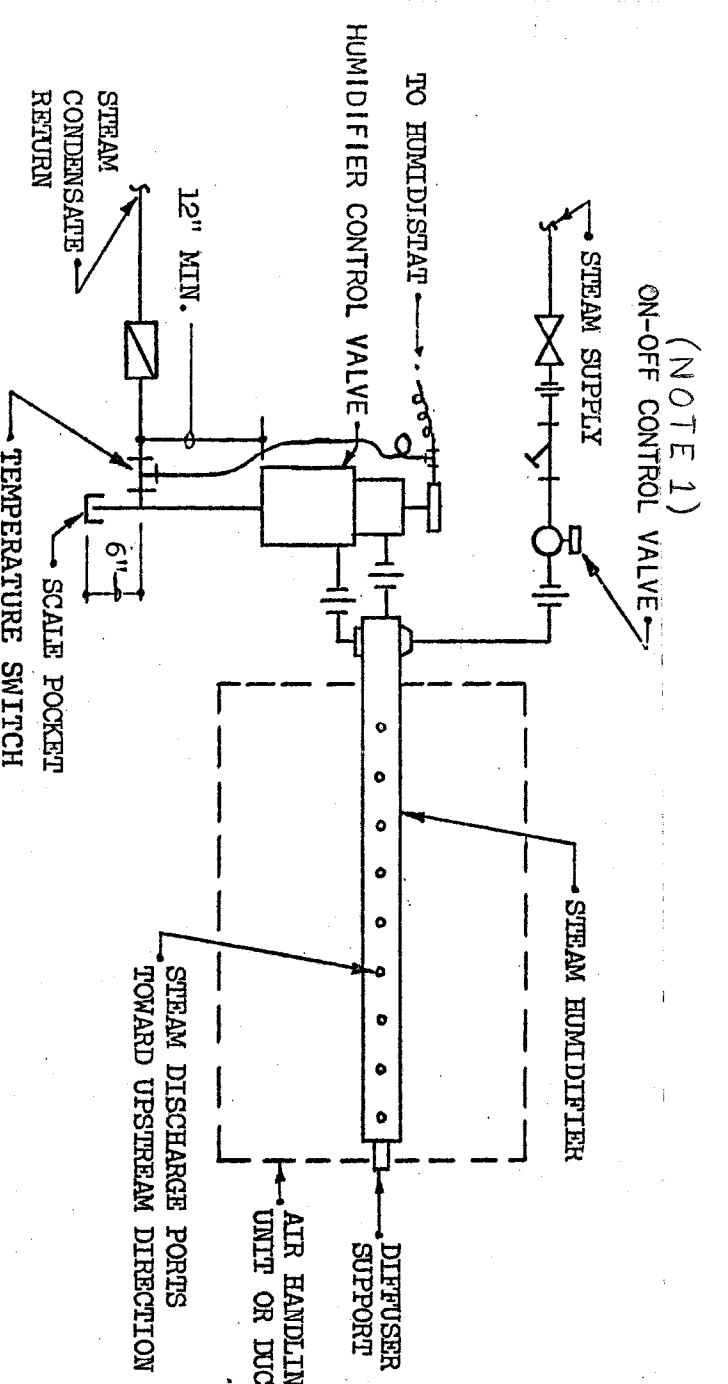


NOTES:
1. WHEN CONDENSATE PUMP IS INSTALLED IN RT MOUNT, MAKE SURE IT IS LOCATED OUTSIDE OF FTH SEE PLANS FOR LOCATION.

TYPICAL CONNECTIONS TO CONDENSATE PUMP

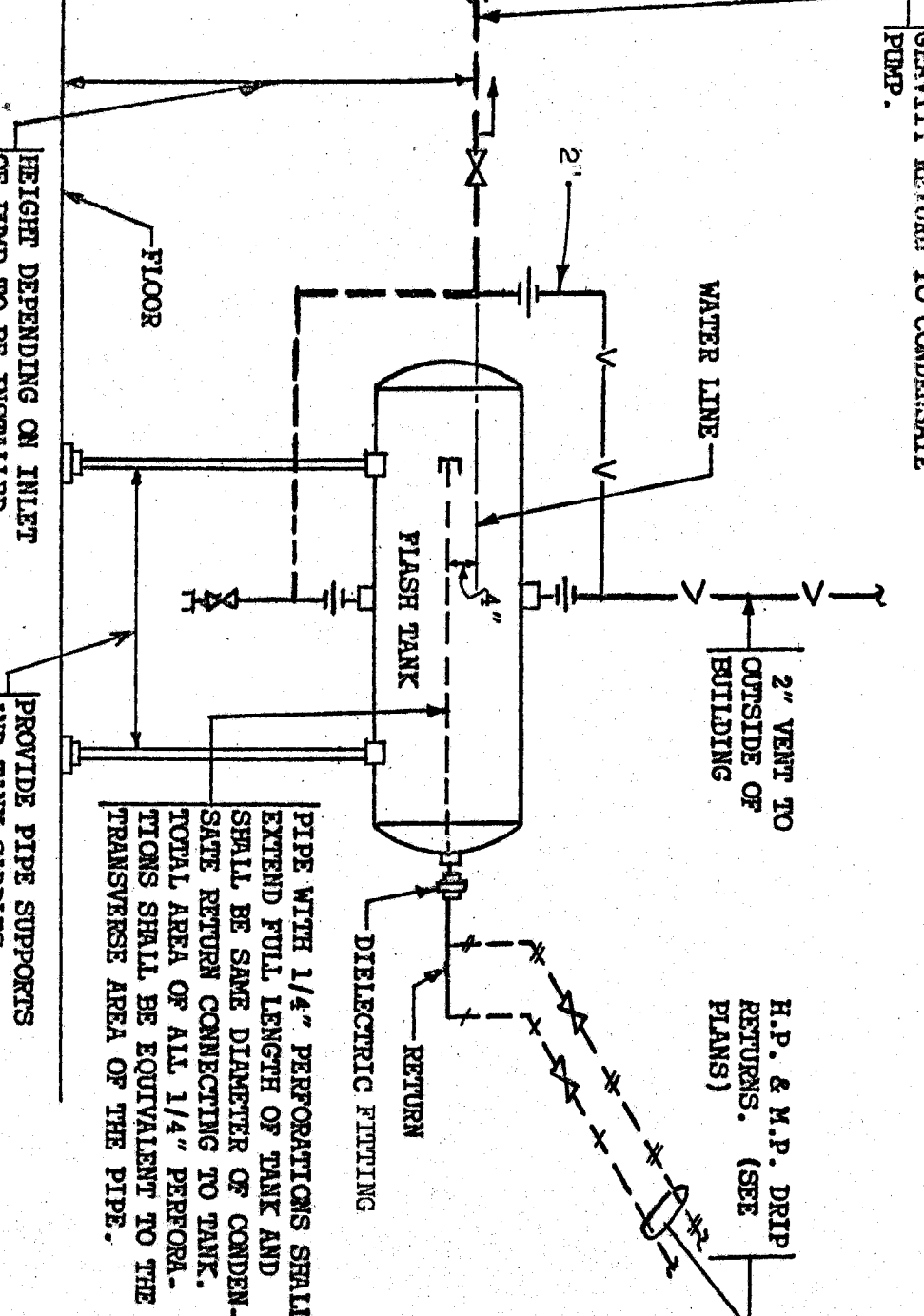


TYPICAL CONNECTIONS TO MANIFOLD
MANIFOLD STEAM PIPE HANGERS



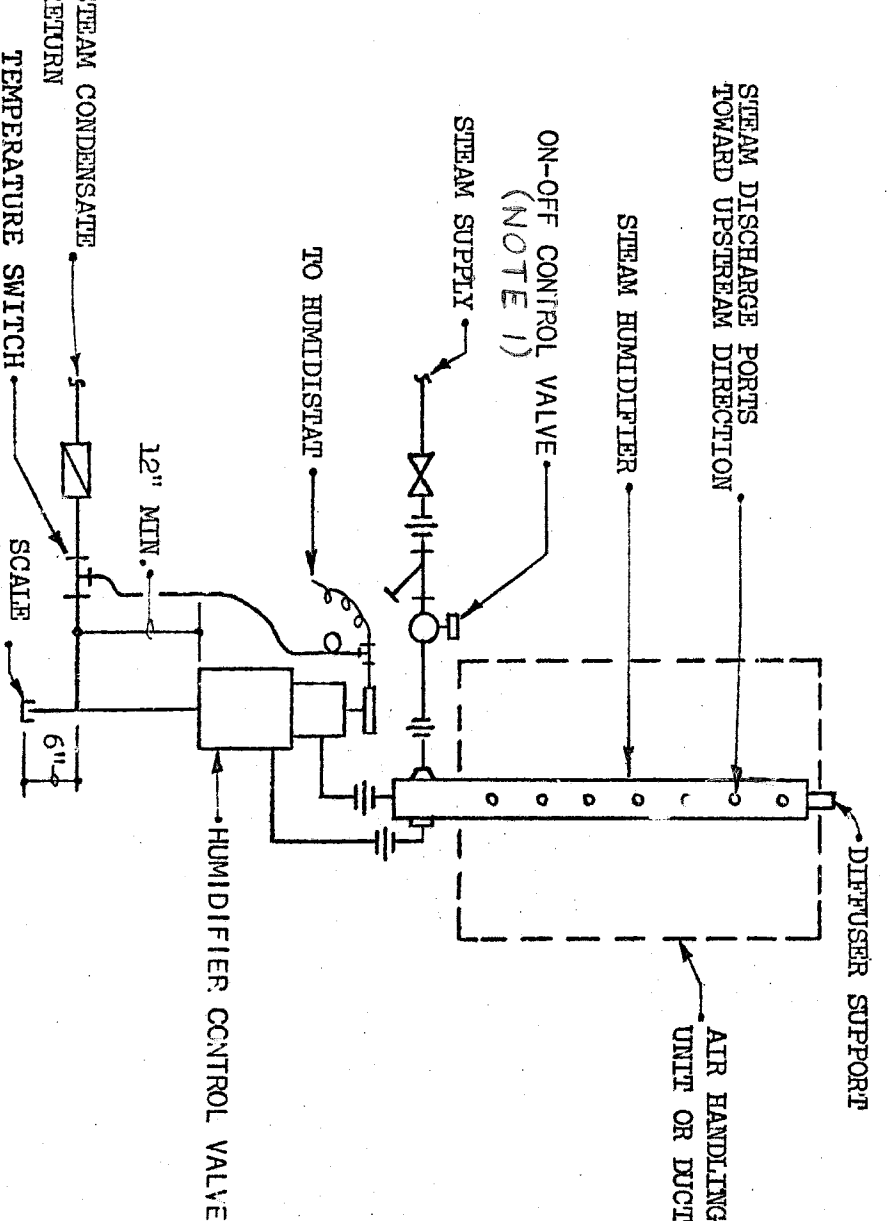
1. VALVE NOT REQUIRED FOR TERMINAL HUMIDIFIERS WITH TYPE III TERMINALS & CONTROL.

TYPICAL CONNECTIONS TO HUMIDIFIER



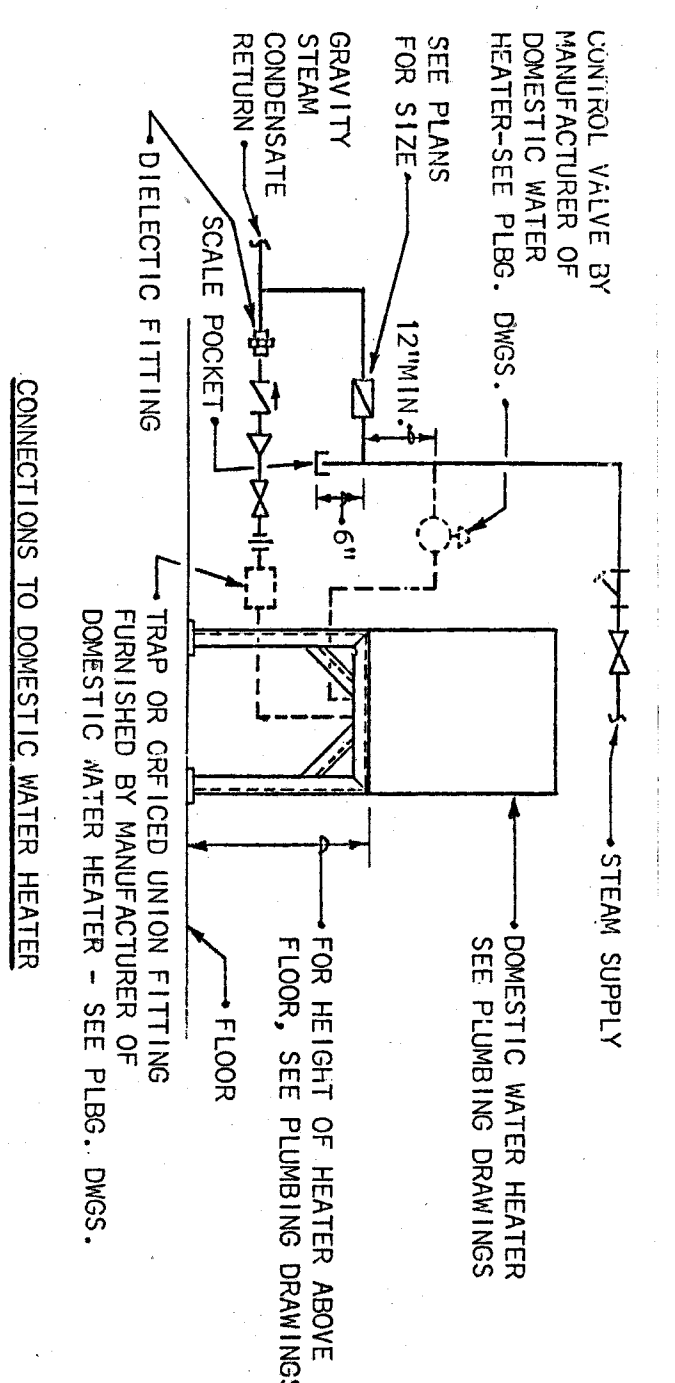
CONDENSATE PUMP CAPACITY - GPM	APPROX. CAPACITY OF FLASH TANK - GALLONS	SIZE OF FLASH TANK - INCHES
0 TO 15	16	14 DIA. X 24 LONG
16 " 22 1/2	24	14 " X 36 "
23 " 30	31	16 " X 36 "
31 " 37	37	16 " X 42 "
38 " 45	42	18 " X 48 "
46 " 60	61	18 " X 54 "
61 " 75	75	24 " X 66 "
76 " 97 1/2	95	24 " X 78 "
98 " 150	155	24 " X 94 "

TYPICAL CONNECTIONS TO FLASH TANK



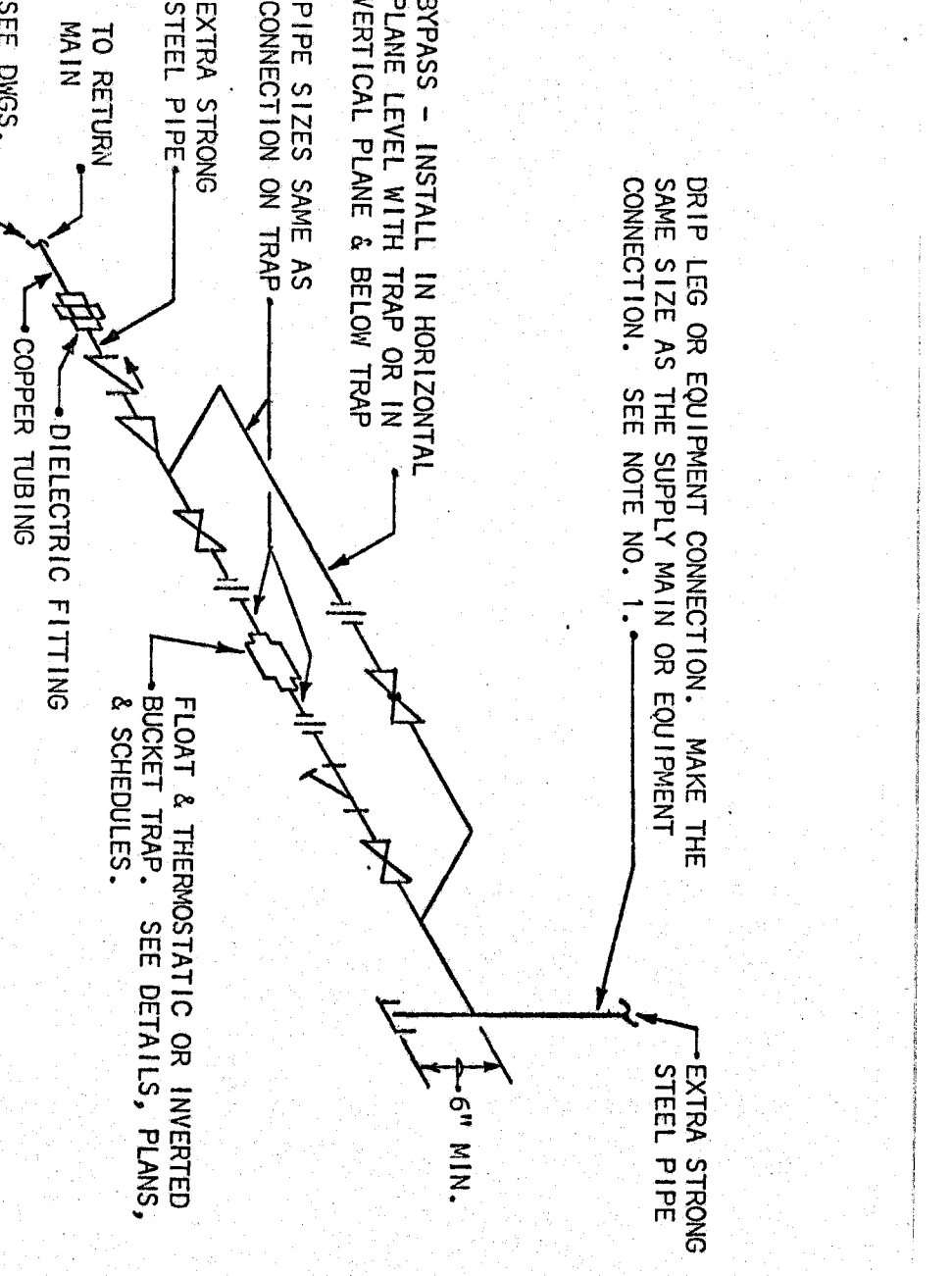
NOTE 1: VALVE NOT REQUIRED FOR TERMINAL HUMIDIFIERS WITH TYPE III TERMINALS & CONTROL.

TYPICAL CONNECTIONS TO HUMIDIFIER



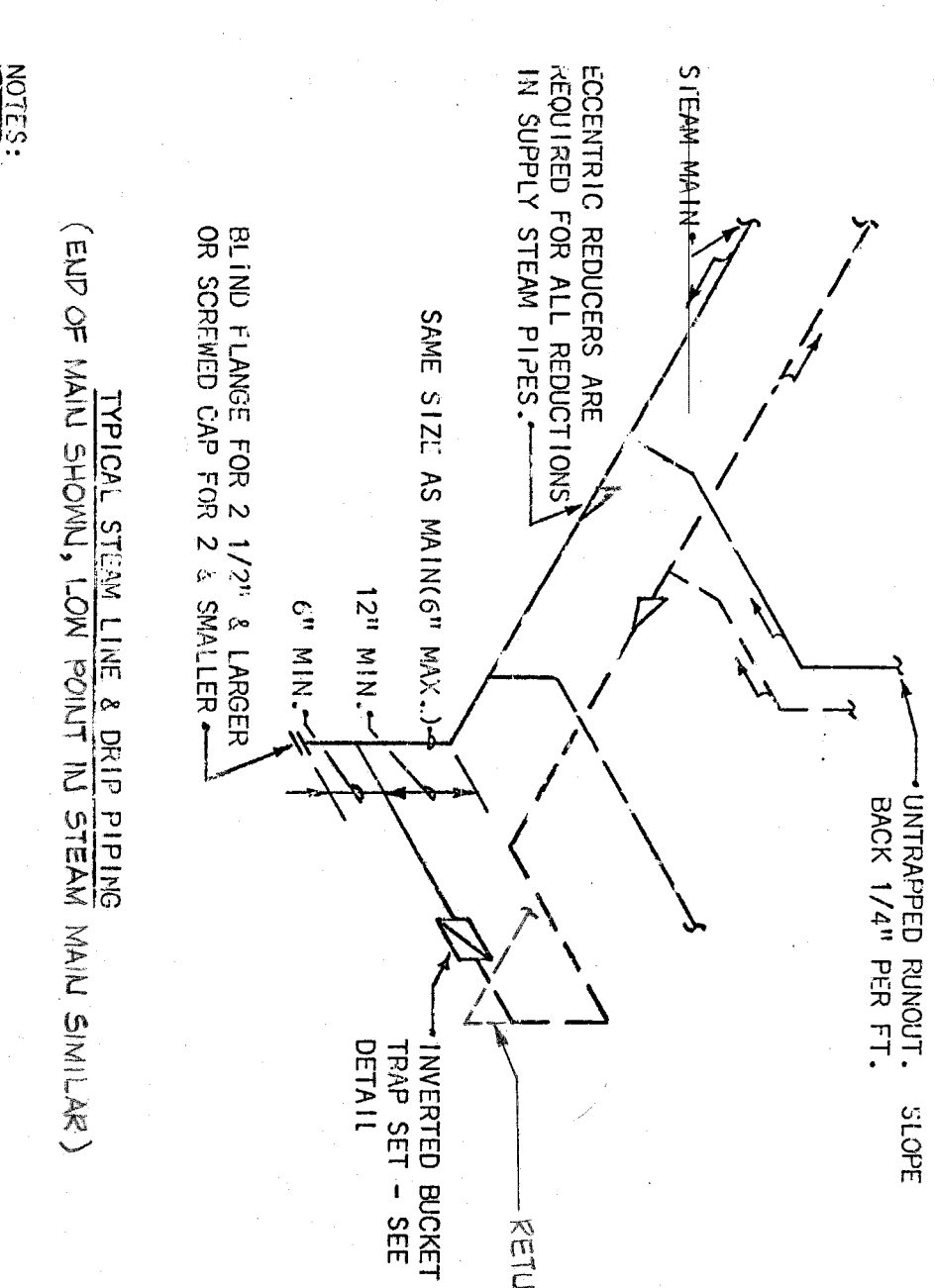
NOTES:
1. VERTICAL COIL TYPE DOMESTIC WATER HEATER IS SHOWN. IF HORIZONTAL TUBE BUNDLE TYPE IS PROVIDED, PIPING SHALL BE SIMILAR.
2. SEE PLUMBING DRAWINGS FOR PLUMBING CONNECTIONS.

TYPICAL CONNECTIONS TO DOMESTIC WATER HEATER



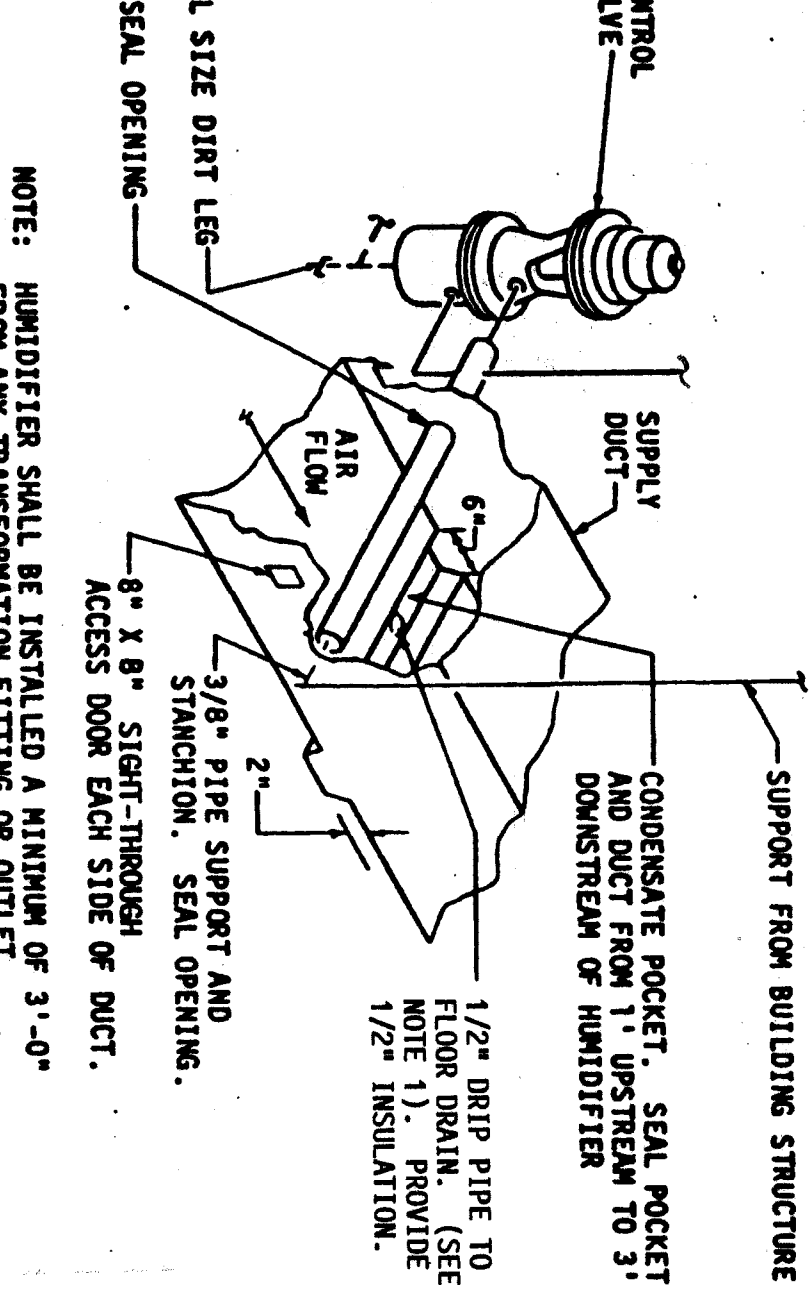
NOTES:
1. ALL DRIP POINTS ON STEAM MAINS SHALL BE PROVIDED WITH A 1/2" MINIMUM HIGH DRIP LEG FROM BOTTOM OF STEAM MAIN TO TRAP INLET. DRIP LEG SHALL HAVE 6" SCALE POCKET BELOW TRAP INLET.
2. NO BYPASS IS REQUIRED ON THE TRAP SET PROVIDED FOR THE DIPPING OF LOW PRESSURE SUPPLY MAINS (15 PSIG OR LESS).
3. NO CHECK VALVE IS REQUIRED FOR LOW PRESSURE STEAM SYSTEM WITH GRAVITY RETURN.
4. NO BYPASS OR STRAINER IS REQUIRED ON TRAP SETS IN PARALLEL FOR PRE-HEATING. ONLY ONE CHECK VALVE & ONE DIELECTRIC FITTING IS REQUIRED.

TYPICAL CONNECTIONS TO HUMIDIFIER



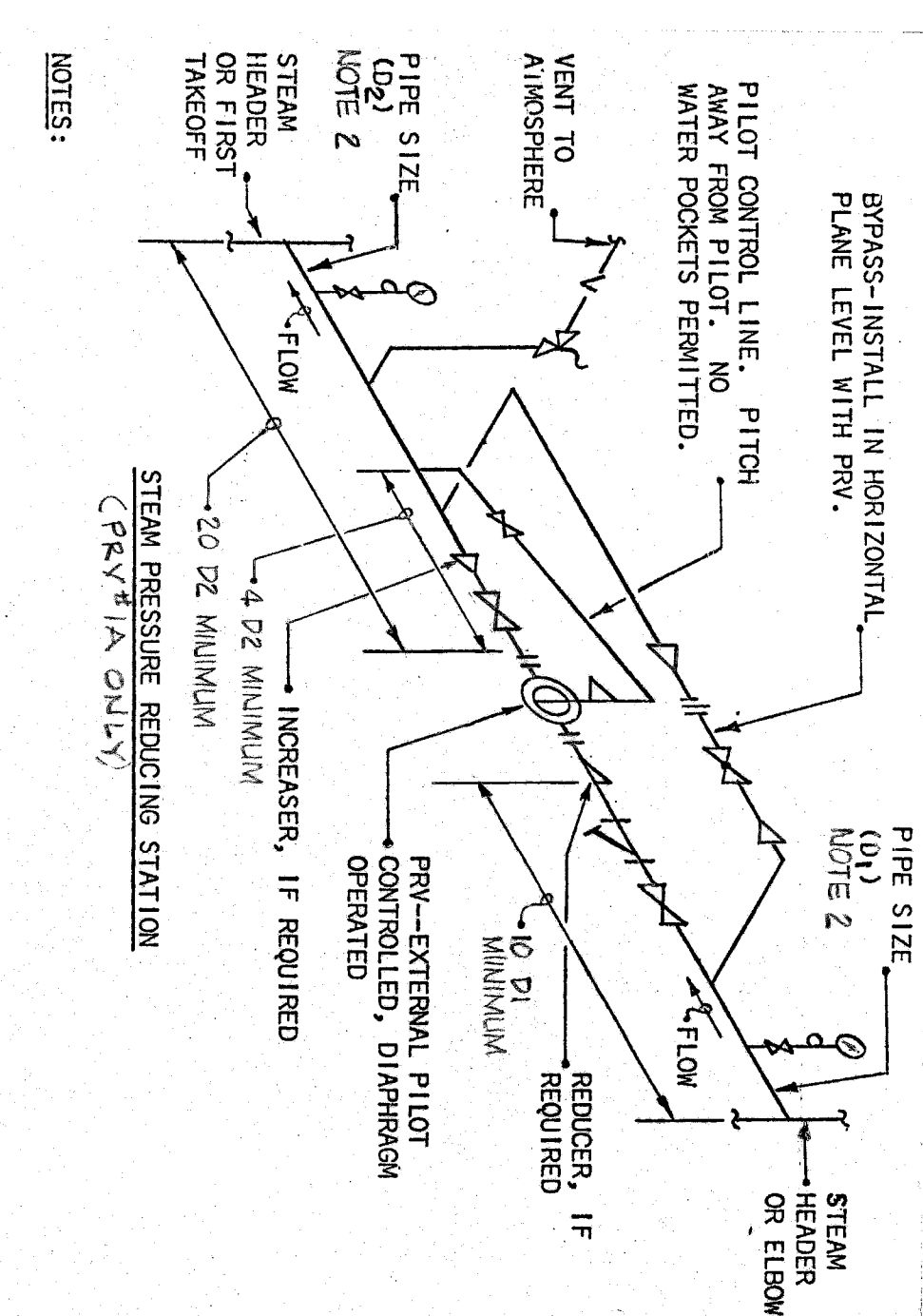
NOTE 1: SLOPE MAINS & BRANCHES DOWN 1" PER 40 FEET IN DIRECTION OF FLOW UNLESS SHOWN OTHERWISE.

TYPICAL CONNECTIONS TO HUMIDIFIER



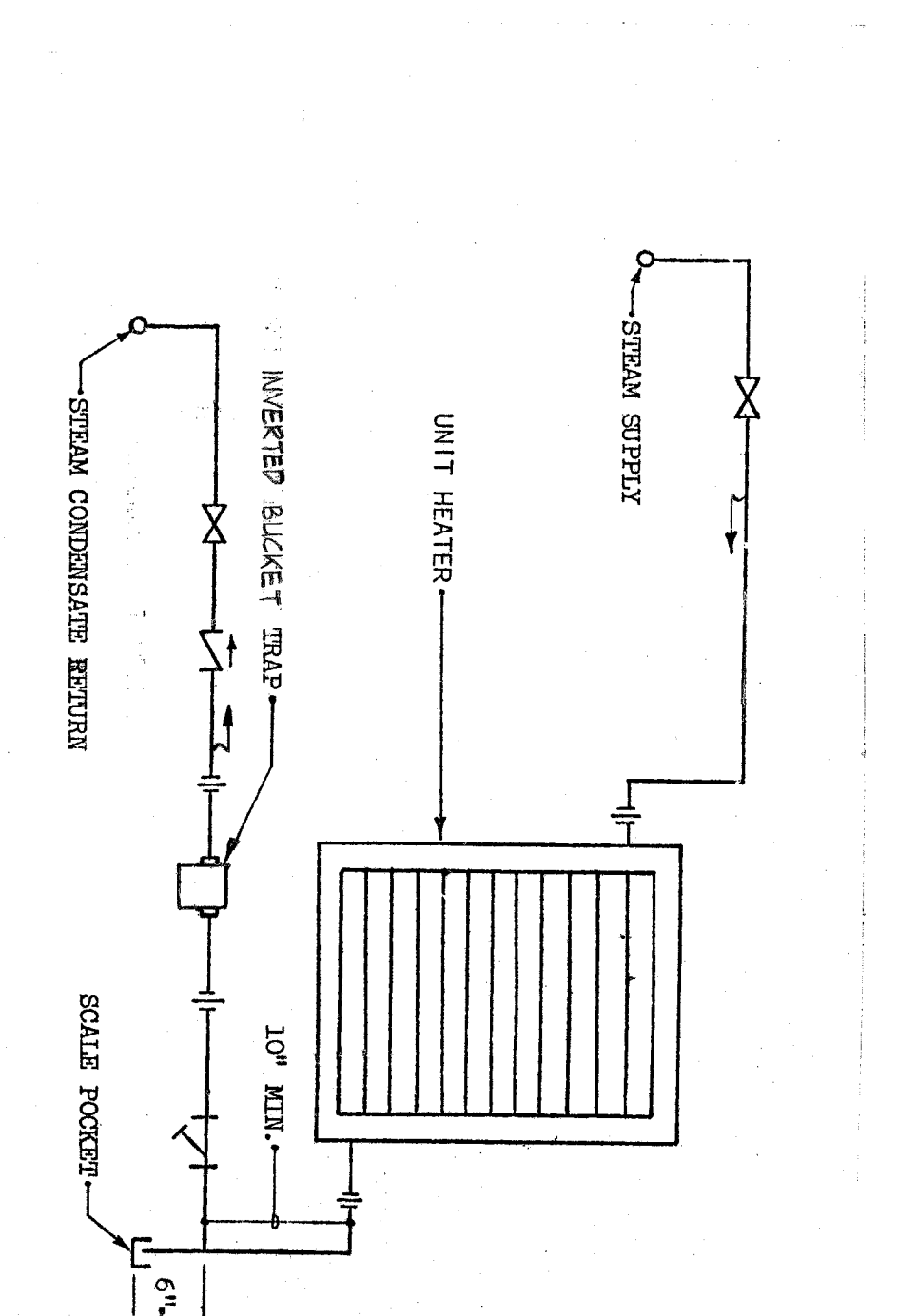
NOTE: HUMIDIFIER SHALL BE INSTALLED A MINIMUM OF 3'-0" FROM ANY TRANSFORMATION FITTING OR OUTLET.

TYPICAL CONNECTIONS TO HUMIDIFIER



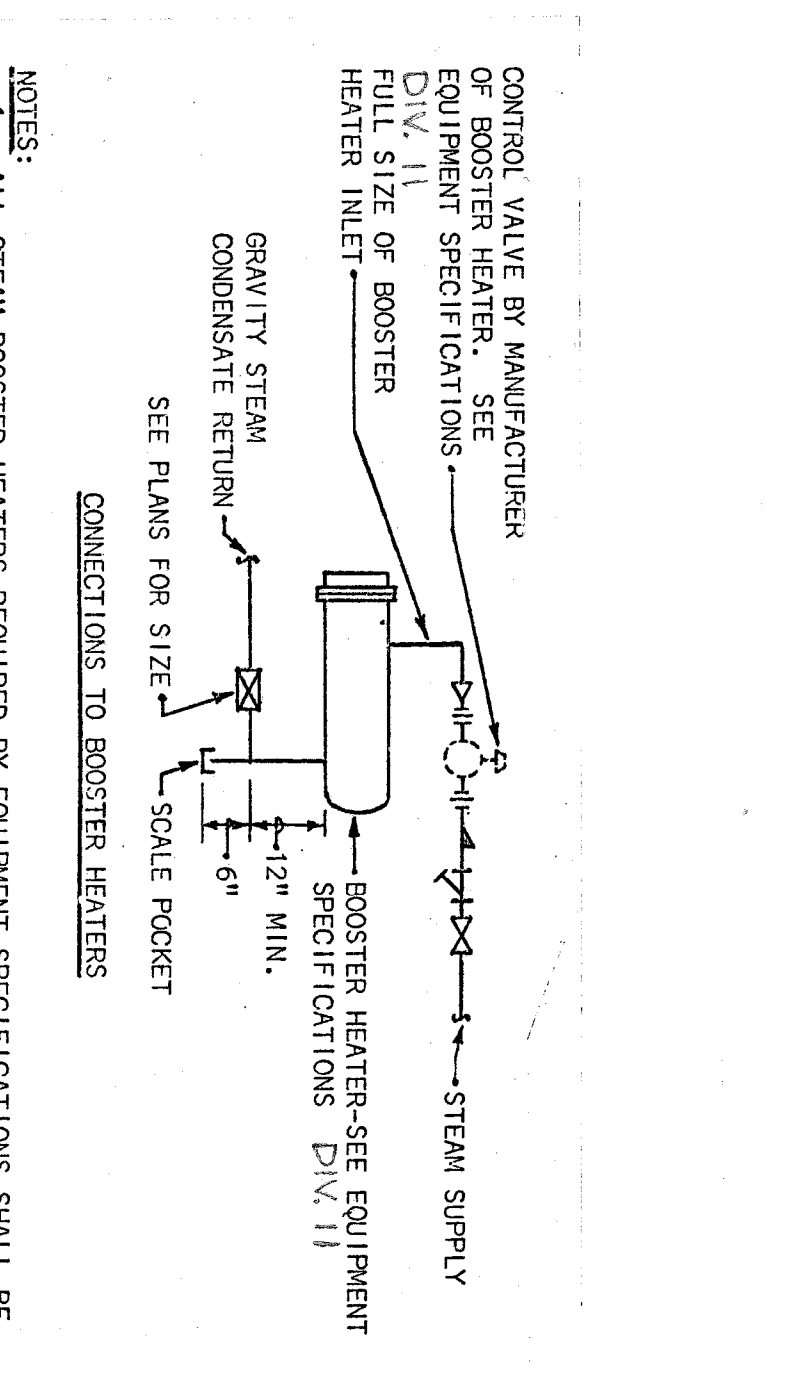
NOTES:
1. PROVIDE REQUIRED UNIONS TO REMOVE PIN WHEN PIN HAS SCREENED CONNECTIONS.
2. FOR SIZES OF PIPING FITTINGS, VALVES, STRAINERS, BYPASSES, & HEATING CAPACITIES, SEE SCHEDULES.
3. PIPE BEDS MAY BE USED ON BYPASSES.
4. PRESSURE REDUCING VALVES SHALL BE SIZED FOR INITIAL AND FINAL PRESSURES AND CAPACITIES AS GIVEN IN SCHEDULES ON THE DRAWINGS.
5. SAFETY VALVES SHALL BE SIZED SO AS TO RELIEVE AT PRESSURES OF 5 TO 10 LB. ABOVE THE MAXIMUM CAPACITY OF THE SYSTEM. THEY SHALL HAVE A SET POINT NOT TO BE LESS THAN ONE PIPE SIZE LARGER THAN SAFETY VALVE DISCHARGE AND SHALL FURTHER BE SIZED SO THAT FRICTIONAL RESISTANCE OR VELOCITY DOES NOT EXCEED VELOCITY IN SAFETY DISCHARGE. VENTS FROM SAFETY VALVES SHALL BE SIZED TO DISCHARGE TO THE OUTSIDE. VENTS FROM SAFETY VALVES SHALL BE SIZED TO DISCHARGE TO THE OUTSIDE. VENTS FROM SAFETY VALVES SHALL BE SIZED TO DISCHARGE TO THE OUTSIDE. VENTS FROM SAFETY VALVES SHALL BE SIZED TO DISCHARGE TO THE OUTSIDE.

TYPICAL CONNECTIONS TO HUMIDIFIER



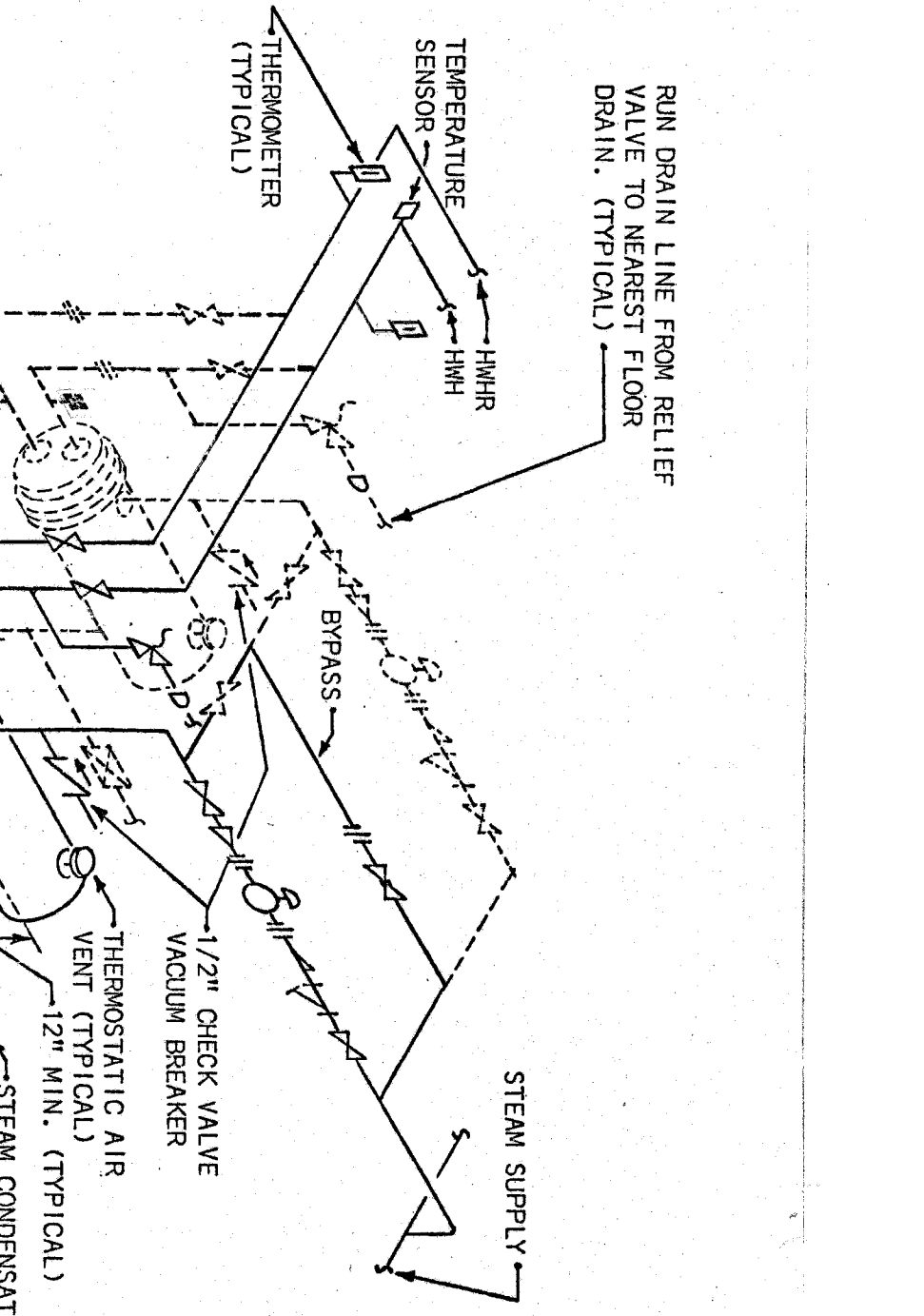
NOTE 1: SLOPE MAINS & BRANCHES DOWN 1" PER 40 FEET IN DIRECTION OF FLOW UNLESS SHOWN OTHERWISE.

TYPICAL CONNECTIONS TO HUMIDIFIER



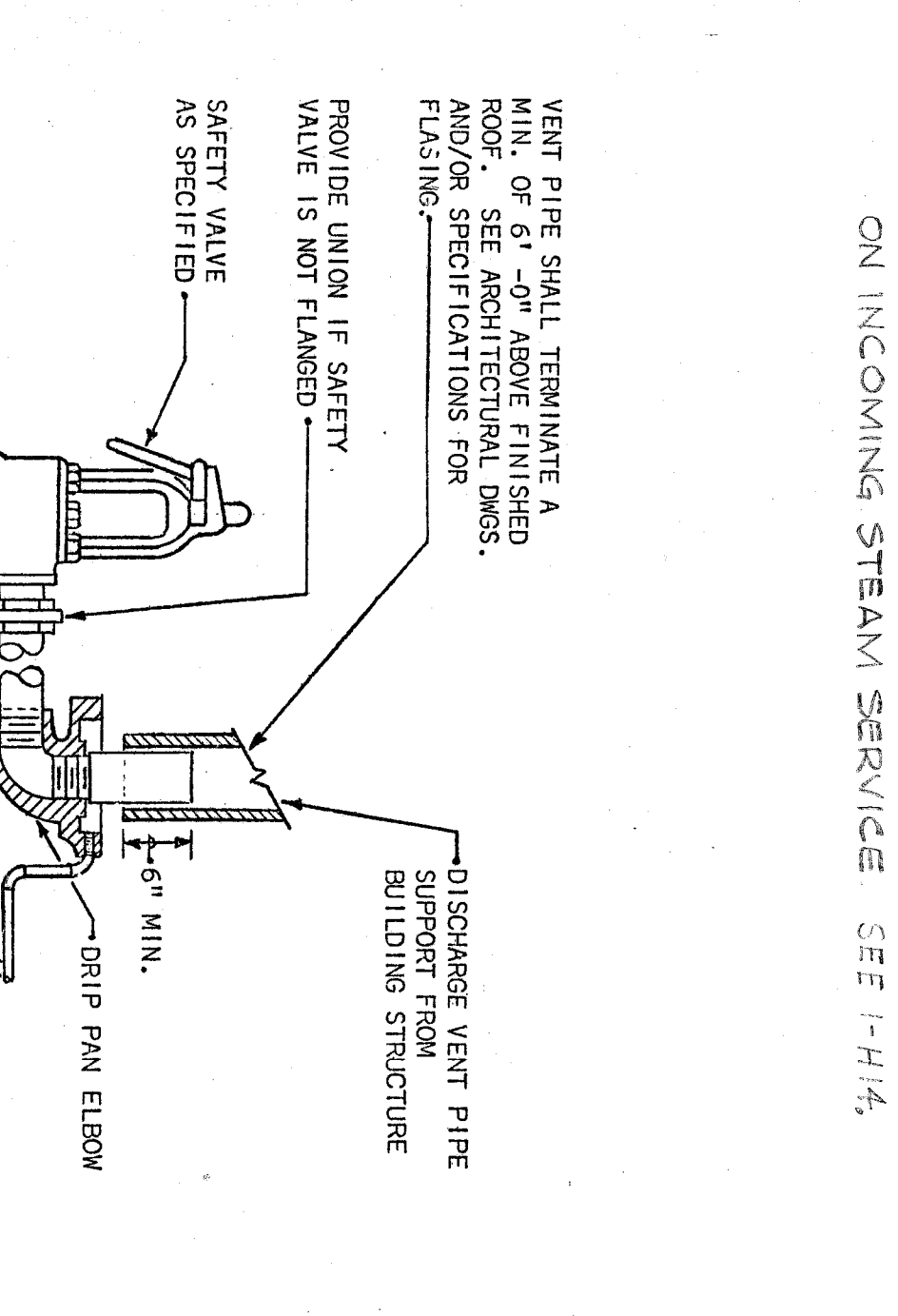
NOTES:
1. ALL STEAM BOOSTER HEATERS REQUIRED BY EQUIPMENT SPECIFICATIONS SHALL BE SIZED AS SHOWN ON PLANS AND IN PLUMBING DRAWINGS FOR PLUMBING PIPING CONNECTIONS.
2. SEE PLUMBING DRAWINGS FOR PLUMBING CONNECTIONS.

TYPICAL CONNECTIONS TO HUMIDIFIER



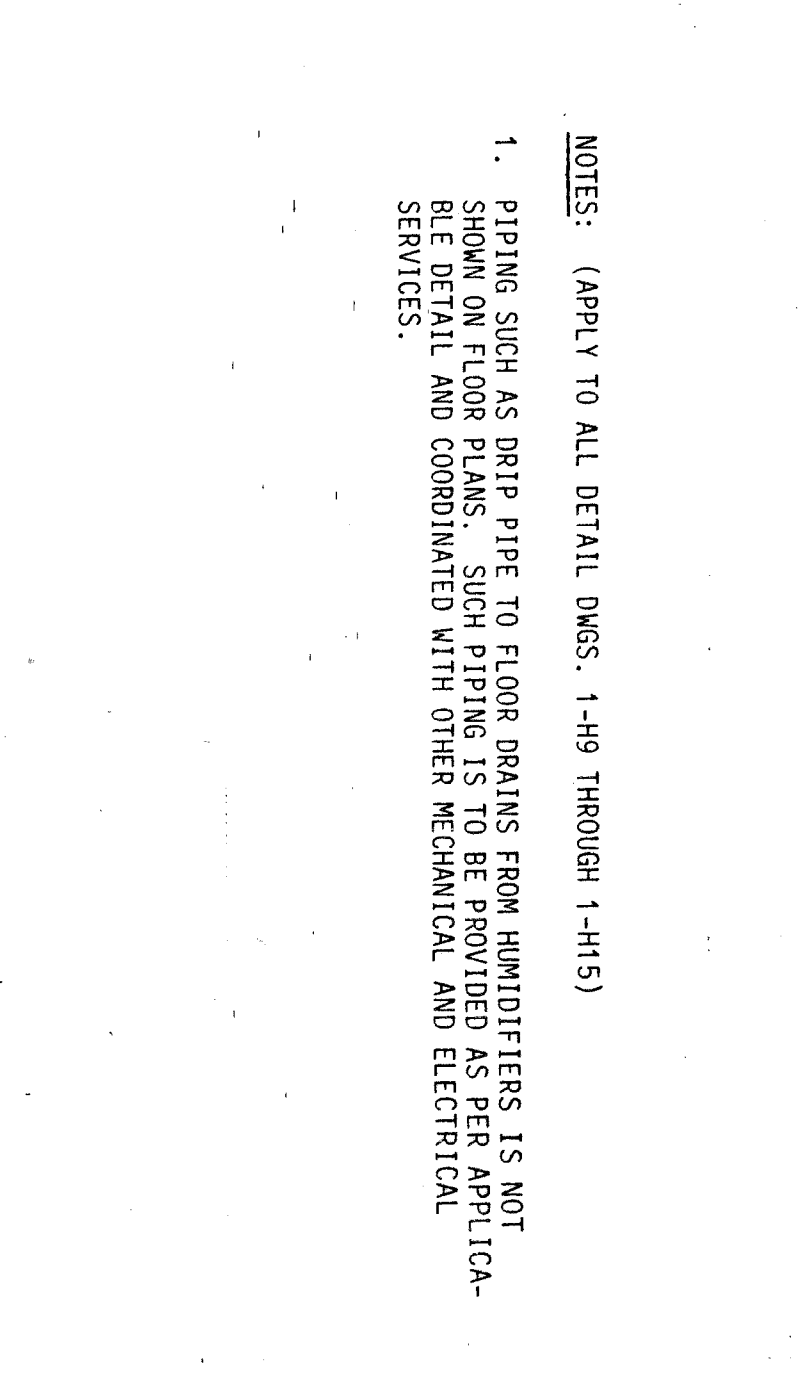
NOTES:
1. THE ABOVE DETAIL SHOWS REQUIRED PIPING FOR TWO CONVERTERS IN PARALLEL. GLYCOL WATER HEATING IS REQUIRED.
2. PROVIDE SADDLE SUPPORTS AND LEGS OR HANGERS FOR CONVERTER.
3. MAKE THE BYPASS THE SAME SIZE AS THE CONNECTIONS TO THE CONTROL VALVES.
4. PROVIDE TWO STEAM CONTROL VALVES FOR EACH CONVERTER.
5. TOTAL OF 8 CONVERTERS REQUIRED, 4 SYSTEMS, EACH CONVERTER IS SIZED FOR 50% OF THE SYSTEM.

TYPICAL CONNECTIONS TO HUMIDIFIER



NOTE: APPLIES ALL S.V. OTHER THAN B.T.E. ON INCOMING STEAM SERVICE. SEE I-H-14.

TYPICAL CONNECTIONS TO HUMIDIFIER



NOTES:
1. PIPING SUCH AS DRIP PIPES TO FLOOR DRAIN FROM HUMIDIFIERS IS NOT REQUIRED.
2. SEE PLUMBING DRAWINGS FOR PLUMBING CONNECTIONS.

TYPICAL CONNECTIONS TO HUMIDIFIER

Revisions: 1. 6-17-79

RECORD DRAWING
CORRECTED ON BASIS OF DATA
FURNISHED BY THE RESIDENT ENGINEER

RTI/CSD/HENRY ADAMS (L.V.)
ARCHITECTS AND ENGINEERS
400 E. PRATT STREET
BALTIMORE, MD 21202

Approved Project Director: [Signature]

Scale: NONE
Checked: NONE
Location: 1
Building Number: 1

Project Title: 324-BED REPLACEMENT HOSPITAL - PHASE II

Date: 9/1/88
Project No.: 511-001D
Drawing No.: I-H-9
Dwg. 2 of 12

Veterans Administration

B-0-1-1242