

SPECIAL NOTES: (APPLY TO THIS DRAWING ONLY)

- 1 2-1/2" FNW AT FLOOR LANDING. LOCATE VALVE 60" AFF.
- 2 3" UP TO 3" RD.
- 3 HVAC EQUIPMENT. SEE H-SERIES DWGS.
- 4 NOT USED.
- 5 TRAP IN PIPING SHALL PROVIDE 2" AIR SPACE IN TOP OF ECONOMIZER SHELL.
- 6 TO EXPANSION TANK. SEE H-SERIES DWGS.

165

16

155

15

13

12

11

10

9

8

A

B

B2

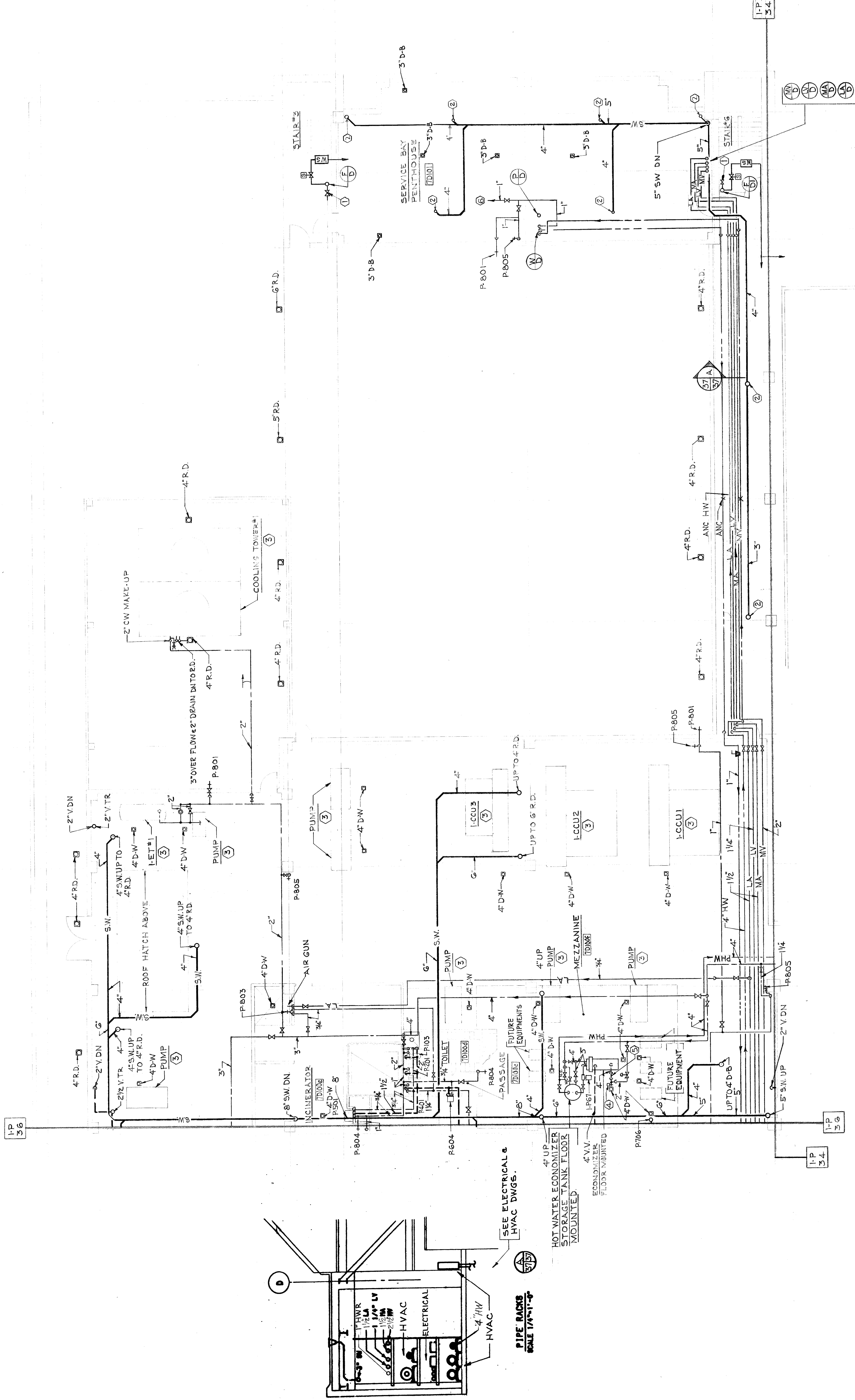
B3

C

C7

C8

D



8-0-1-1196

| | | | | | | | | | |
|---|--|---|--|---|--|--------------------|--|-----------------------------|--|
| Veterans Administration | | Date 9/1/88 | | Project No. 511-001D | | Drawing No. I-P 37 | | Dwg. 38 of 74 | |
| Project Title 324-BED REPLACEMENT HOSPITAL-PHASE II | | Building Number | | Checked | | Drawn | | Location VAMC-BALTIMORE, MD | |
| Drawing Title 7TH FLOOR PLAN AREA D PLUMBING | | Approved Project Director | | RTKL/CS&D/HENRY ADAMS (J.V.) ARCHITECTS AND ENGINEERS 400 E. PRATT STREET BALTIMORE, MD 21202 | | North | | Key Plan | |
| RECORD DRAWING | | CORRECTED ON BASIS OF DATA FURNISHED BY THE RESIDENT ENGINEER | | 6/17/94 | | Date | | H.A. JOB NO. V0022A0 | |