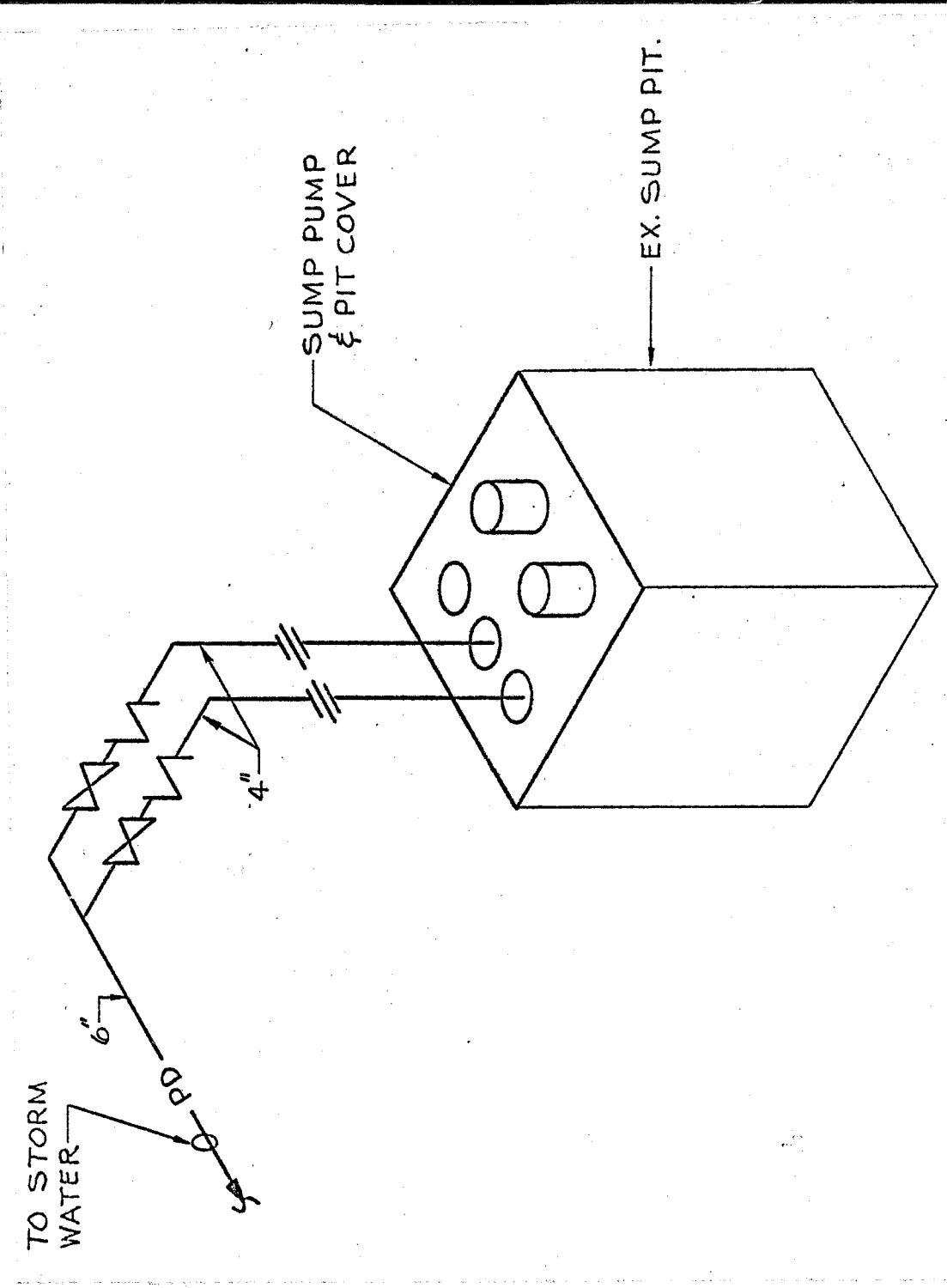
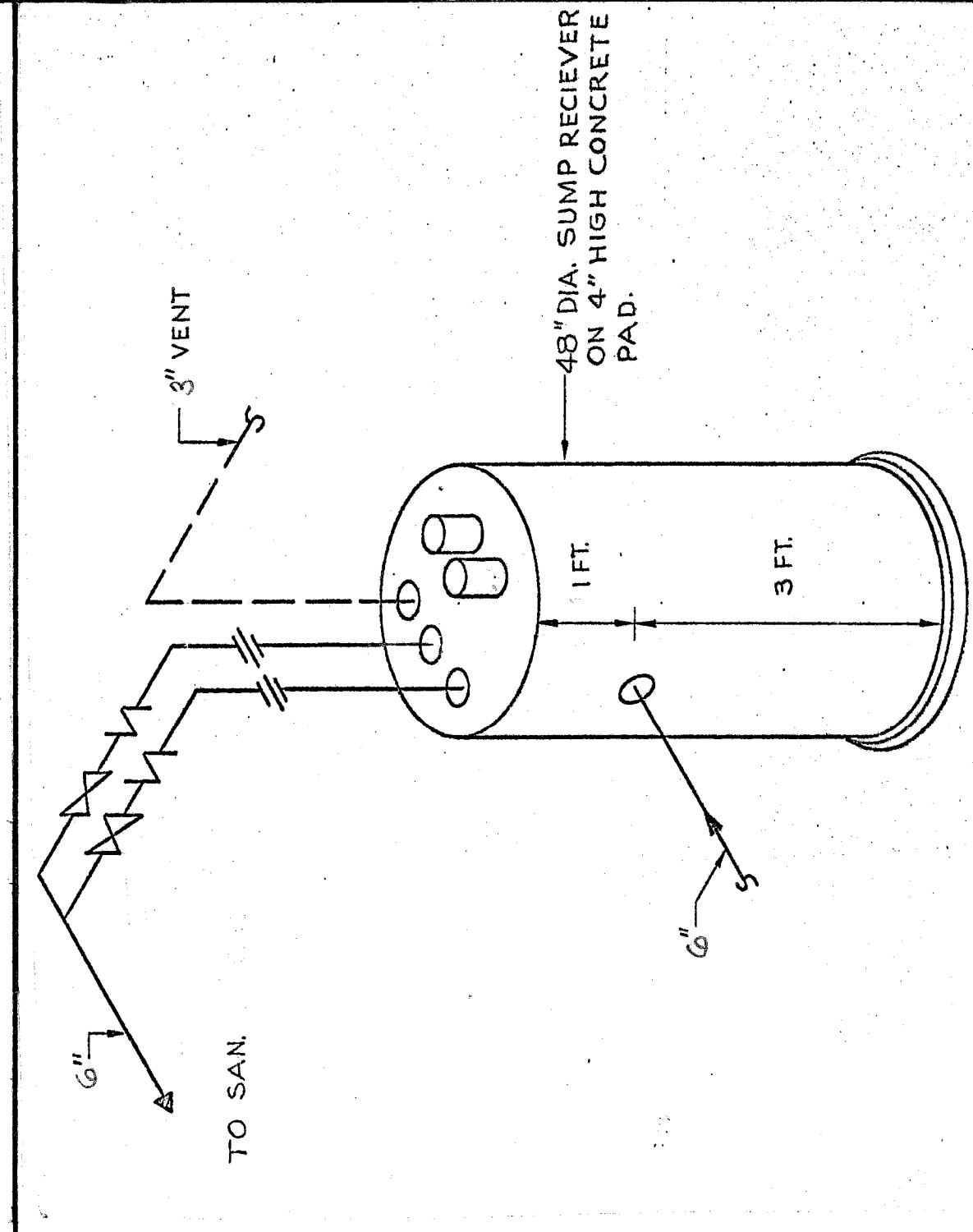


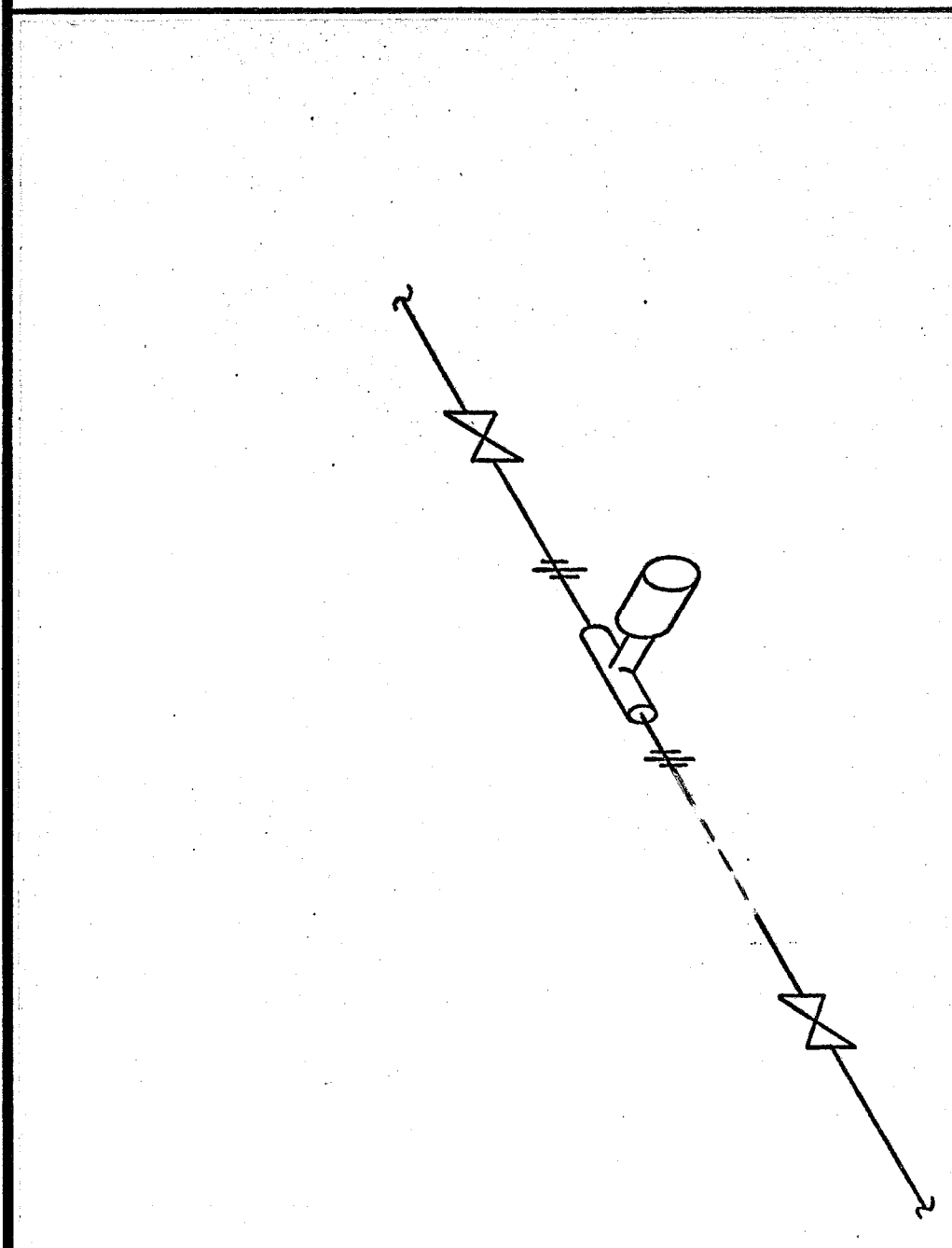
DEWATERING SUMP PUMP DETAIL  
TYPICAL FOR PUMPS  
I-P50 THRU I-P55  
NOT TO SCALE



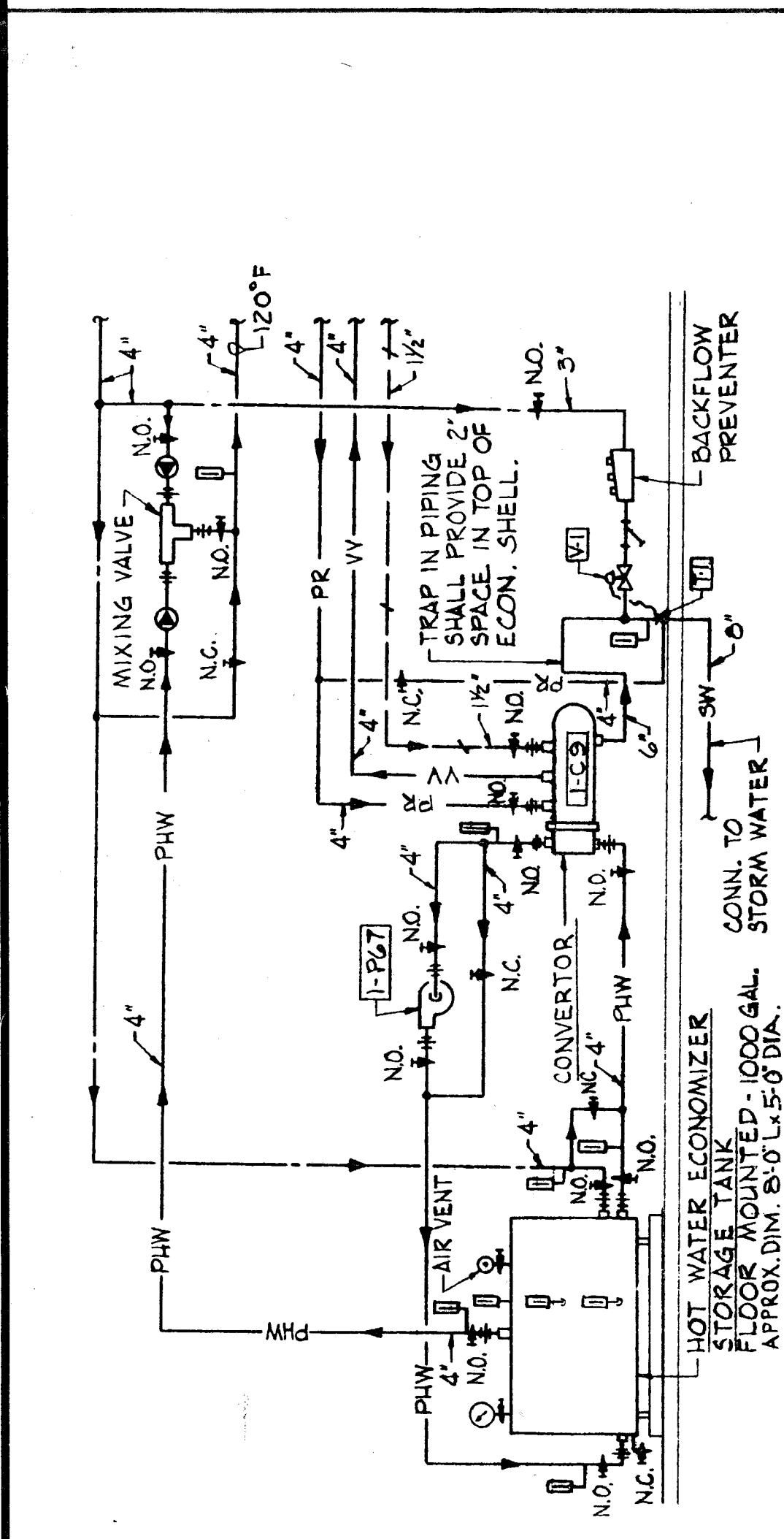
SUMP PUMP DETAIL  
FOR I-P36  
NOT TO SCALE



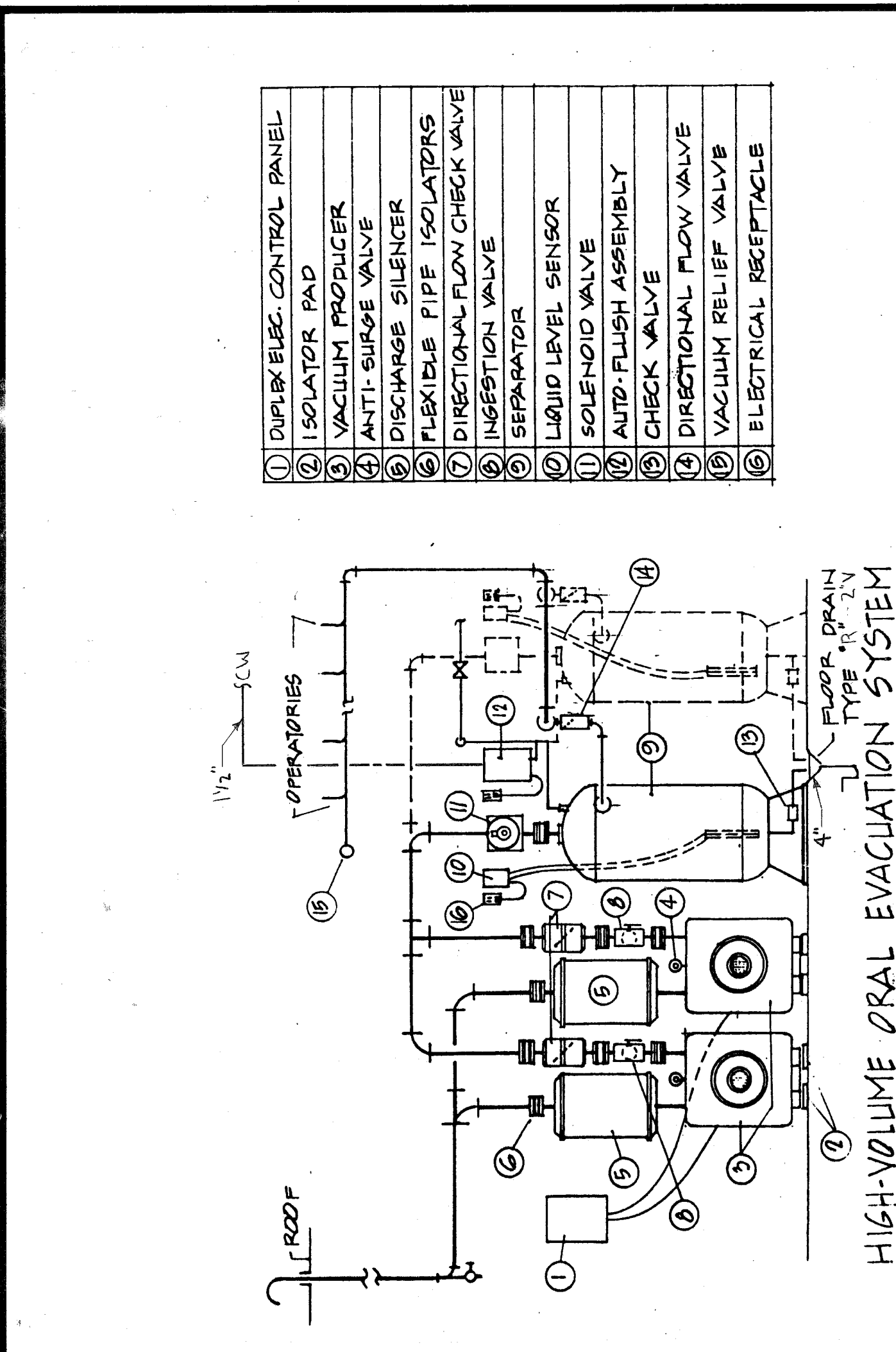
SEWAGE EJECTOR DETAIL  
PUMP I-P57  
NOT TO SCALE



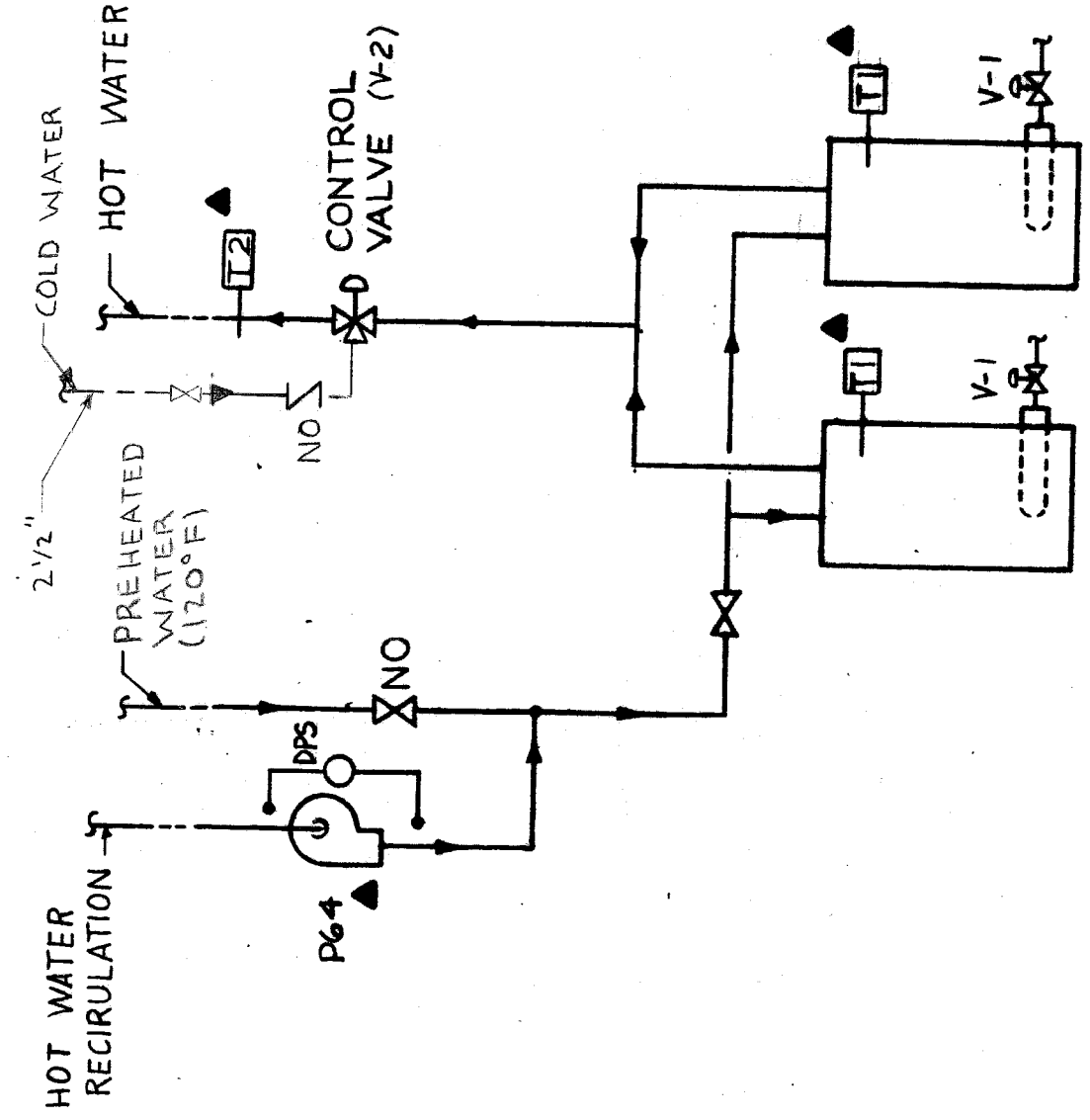
IN-LINE CIRCULATOR DETAIL  
PUMP I-P64 & I-P67  
NOT TO SCALE



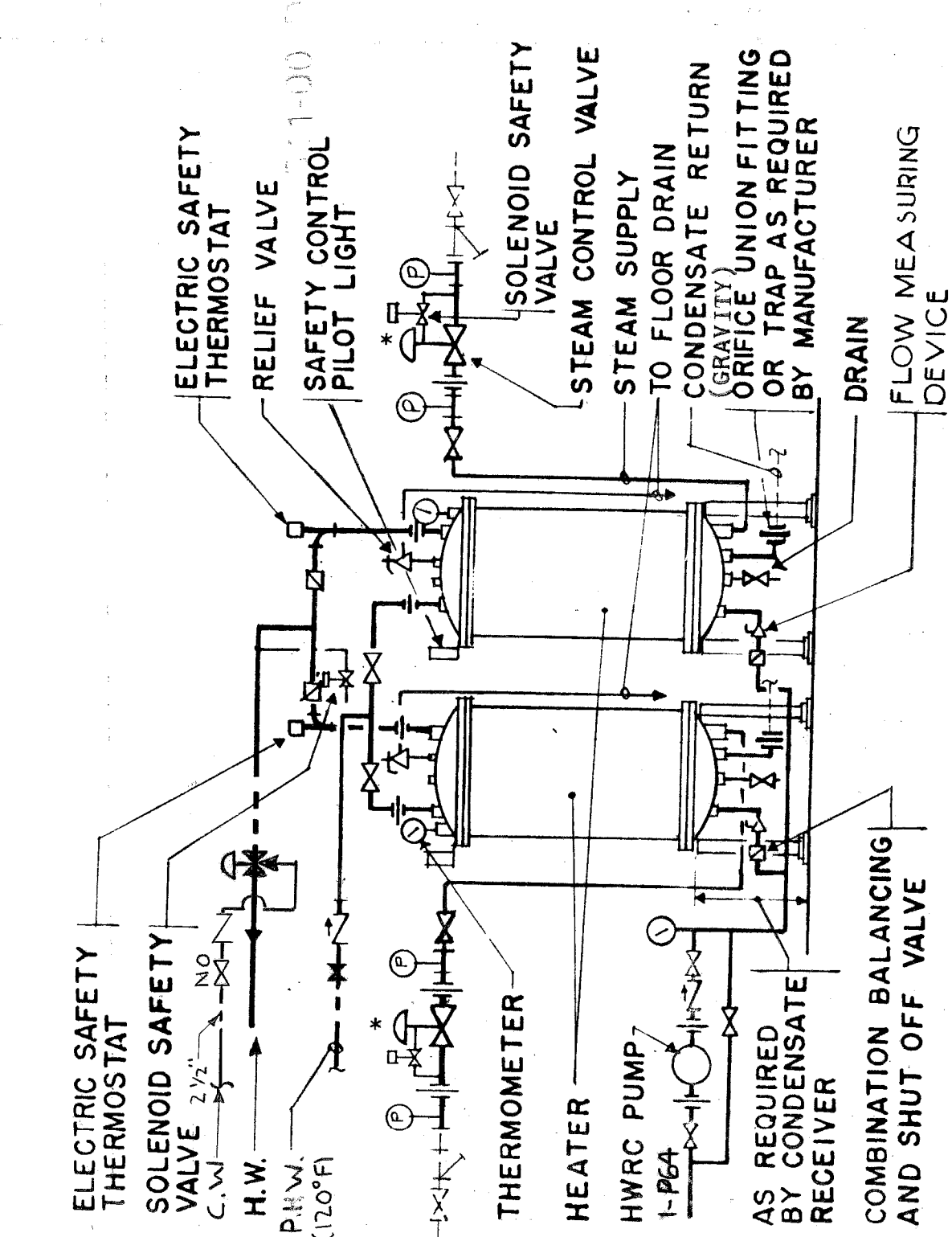
ECONOMIZER PIPING AND CONTROL DETAIL  
NOT TO SCALE  
CONTROL NOTES:  
1. T-1 TO SENSE CONDENSATE TEMPERATURE AND MODULATE COLD WATER VALVE.  
2. T-2 TO MAINTAIN 140°F CONDENSATE TO STORM WATER SYSTEM.  
3. PRE-HEATED WATER PUMP I-P67 SHALL RUN CONTINUOUSLY.  
4. MIXING VALVE TO LIMIT PRE-HEATED WATER TO HEATER SYSTEM TO 120°F.



HIGH-VOLUME ORAL EVACUATION SYSTEM



TWO DOMESTIC WATER HEATERS



NOTES

1. EACH HEATER SHALL HEAT 165 GPM FROM 60° TO 140° F.
2. LOCATE VALVES AND UNIONS AS REQUIRED FOR MAINTENANCE
3. COORDINATE HEIGHT TO INSURE GRAVITY CONDENSATE DRAINAGE TO CONDENSATE RECEIVER
4. \* INSTALL CONTROL VALVE 6" TO 12" ABOVE BOTTOM FLANGE OF HEATER.

PIPING ARRANGEMENT FOR  
HEATERS WITH VERTICAL COILS  
(SHELL AND STEAM COIL HEATERS)  
NOT TO SCALE

RECORD DRAWING  
CORRECTED ON BASIS OF DATA  
FURNISHED BY THE RESIDENT ENGINEER



Henry Adams, Inc.  
Consulting Engineers  
Baltimore, Maryland

RTKL/CSD/HENRY ADAMS (JLV)  
ARCHITECTS AND ENGINEERS  
400 E. PRATT STREET  
BALTIMORE, MD 21202

Project Title	324-BED REPLACEMENT HOSPITAL - PHASE II
Drawing No.	I-P71
Date	9/1/88
Project No.	511-001D
Building Number	1
Location	VAMC - BALTIMORE, MD
Scale	NONE
Checked	
Approved Project Director	<i>Robert M. Adams</i>

B-O-1-1226