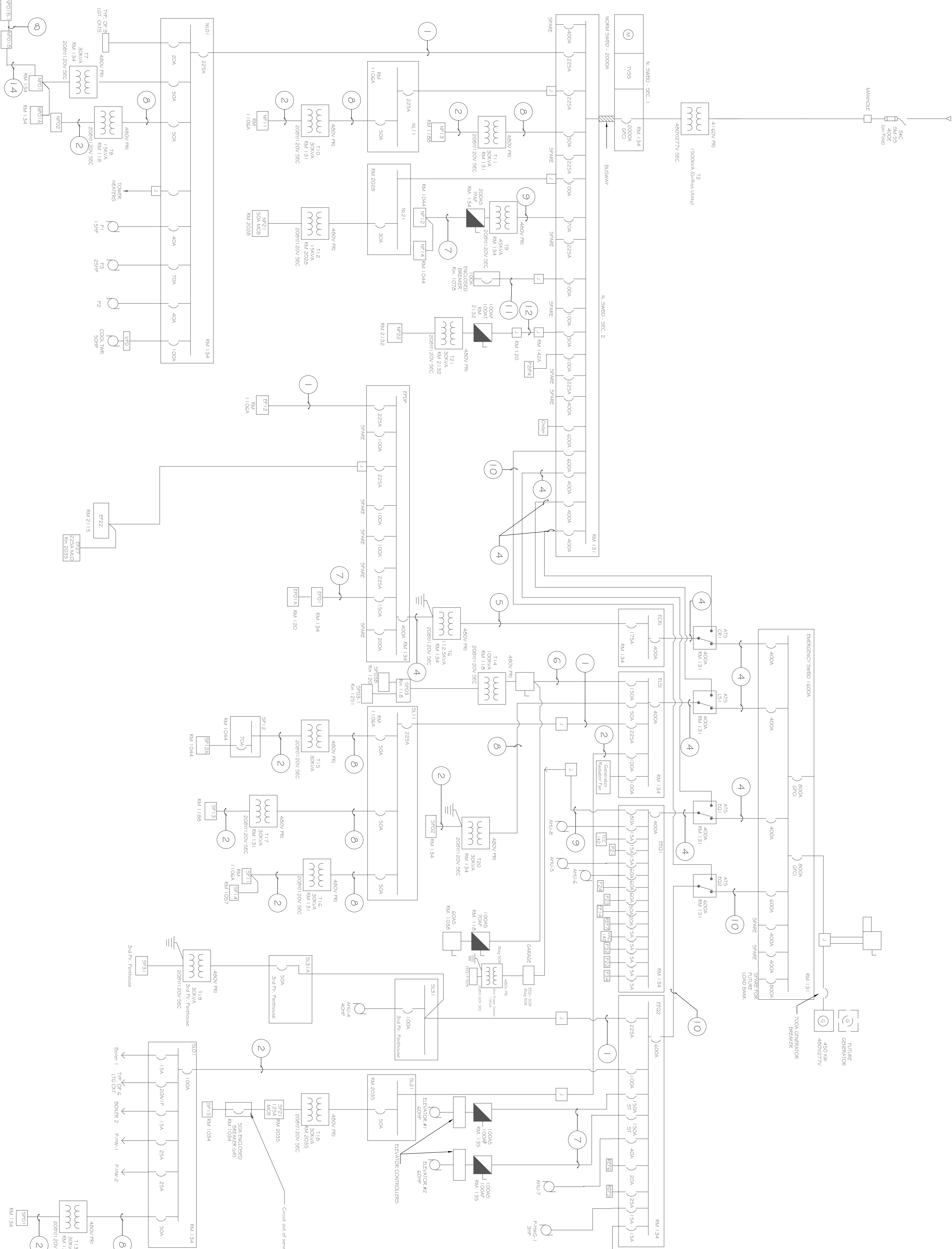


GLISC 399 CONTRIBUTION
6103 SWGR, RM = 7.31



FEDER No.	PHASE CONDUCTOR	NEUTRAL CONDUCTOR	GROUND	RACWAY	NOTES
1	3 #4/0	1 #4/0	1 #4	2-1/2"	-
2	3 #3	1 #3	1 #3	1-1/4"	-
3	3 #3/0	1 #3/0	1 #6	2"	-
4	3 500 KCMIL	1 500 KCMIL	1 #1/0	4"	-
5	3 #2/0	-	1 #6	2"	-
6	3 #1/0	-	1 #6	2"	-
7	3 #1/0	1 #1/0	1 #6	2"	-
8	3 #9	-	1 #1/0	3/4"	-
9	3 #4	1 #4	1 #8	1-1/4"	-
10	3 350 KCMIL	1 350 KCMIL	1 #1	4"	PROVIDE 2 SETS
11	3 #2/0	1 #2/0	1 #6	2"	-
12	3 #6	1 #6	1 #1/0	2 1/2"	-
13	3 #6	1 #6	1 #1/0	1"	-
14	3 #2	1 #2	1 #6	1 1/4"	-

REVISION	DATE

REVISION	DATE

REVISION	DATE

Project Title Test and Calibrate Swgr 2018	Project No. 529A7-18-710
Approved: Facility Director _____	Checked: ASU _____
Reviewed: Facility Manager _____	Drawn: ASU _____
Reviewed: MGR Foreman _____	Location ROME NEW YORK

Date: 10/31/2017

DRAWING NO: E-1

1 OF 1

Department of Veterans Affairs