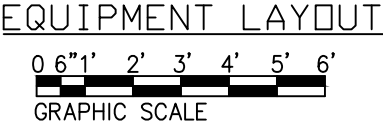
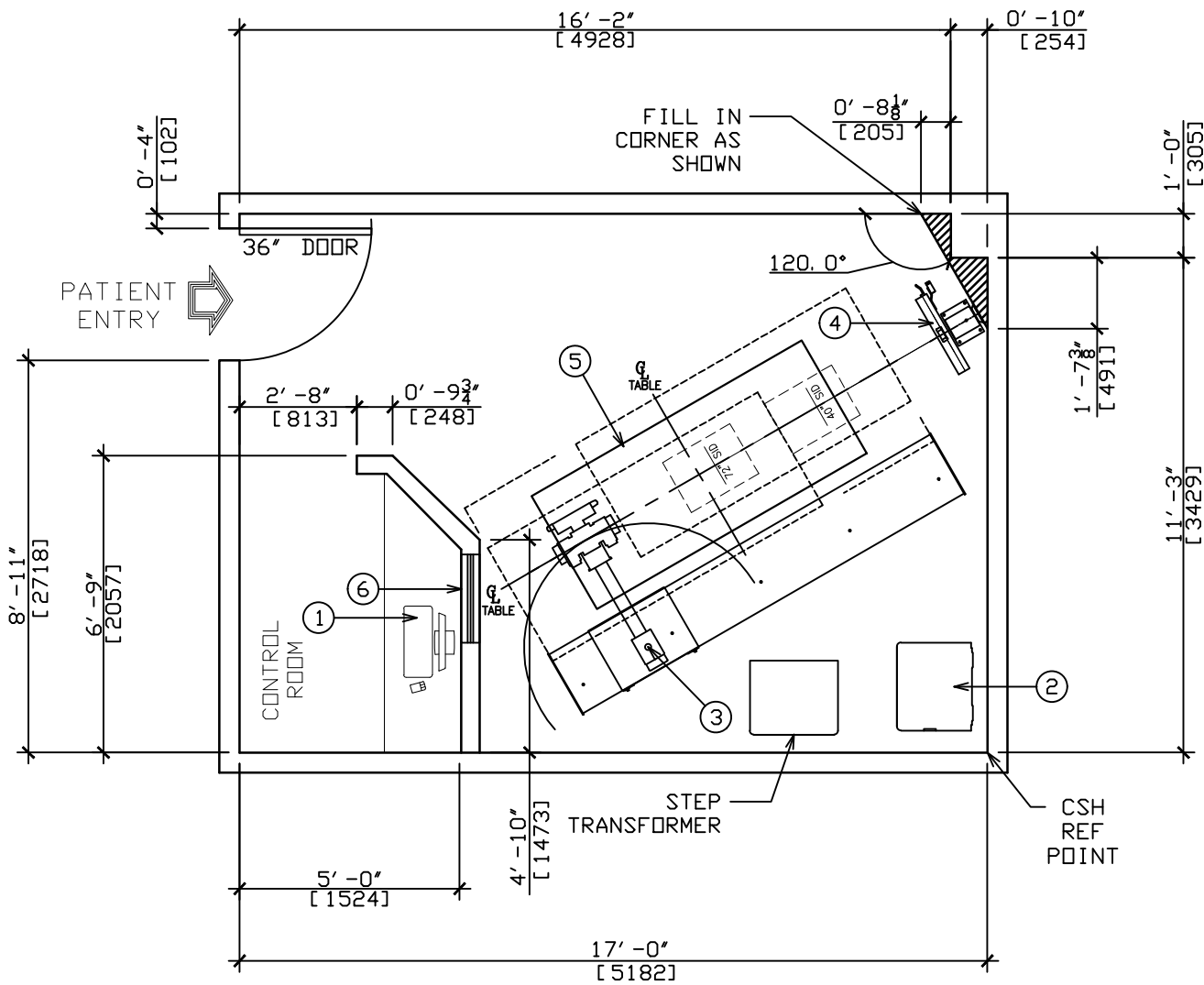




REV	DESCRIPTION	DATE/DFTR
P1	PRELIMINARY DRAWING.	04-12-2013 MASSARO
F1	CREATED FINAL DRAWING PACKAGE BASED ON PM EMAIL.	09.02.2014 LABARR
F2	CREATED FINAL DRAWING PACKAGE, REVISED BASED ON CUSTOMER ROOM CHANGE, PM COMMENTS	09.18.2014 RUECKEL
F3	RELOCATED & REVISED CONTROL ROOM & ROTATED SYSTEM BASED ON CONVERSATIONS WITH PM.	10.01.2014 LABARR
F4	RELOCATED SYSTEM BASED ON SAMETIME MEETING WITH PM.	10.06.2014 LABARR
F5	REVISED PER PM EMAIL MARKUP: RELOCATED JB2 TO CORNER OF CONTROL ROOM; UPDATE NOTES.	04.01.2015 RUECKEL

CUSTOMER SIGNATURE:		DRAWN BY:	MASSARO
		DATE:	04-12-2013
DATE:		PROJECT MGR:	BARTOSCH
		CHECKED BY:	BARTOSCH
PROJECT:		DATE:	04. 01. 2015
		SHT.	C 1
VA FORT PIERCE CLINIC X-RAY FORT PIERCE, FL 34950		REV.	F 5
		SIZE:	B
TITLE:		DRX-ASCEND	
		SCALE:	SEE DRAWING SCALE
SHEET:		1 OF 5	



EQUIPMENT LEGEND

ITEM	SUPPLIED/INSTALLED BY CARESTREAM HEALTH	BTU/hr lb	wt lb	W in	L in	H in
① CNTRL	X-RAY CONTROL-COMPUTER & SYSTEM CONSOLE	130	45	8.5	20	15
② GEN	QUANTUM GENERATOR	3600	500	24	26.6	34.7
③ QFS	QUANTUM QS-550 FLOOR MOUNTED TUBE STAND WITH 10' FLOOR RAIL	200	600	111	47.3	96
④ WSTAND	QW-420 VERTI-Q BUCKY WALL STAND	50	225	27.5	13	83.7
⑤ TBL	QT-750 QUIET-LIFT 4 WAY FLOAT TABLE	400	500	85	35.5	32.5

ITEM	SUPPLIED/INSTALLED BY CUSTOMER
⑥ LED	WINDOW - GLASS, LEAD LINED

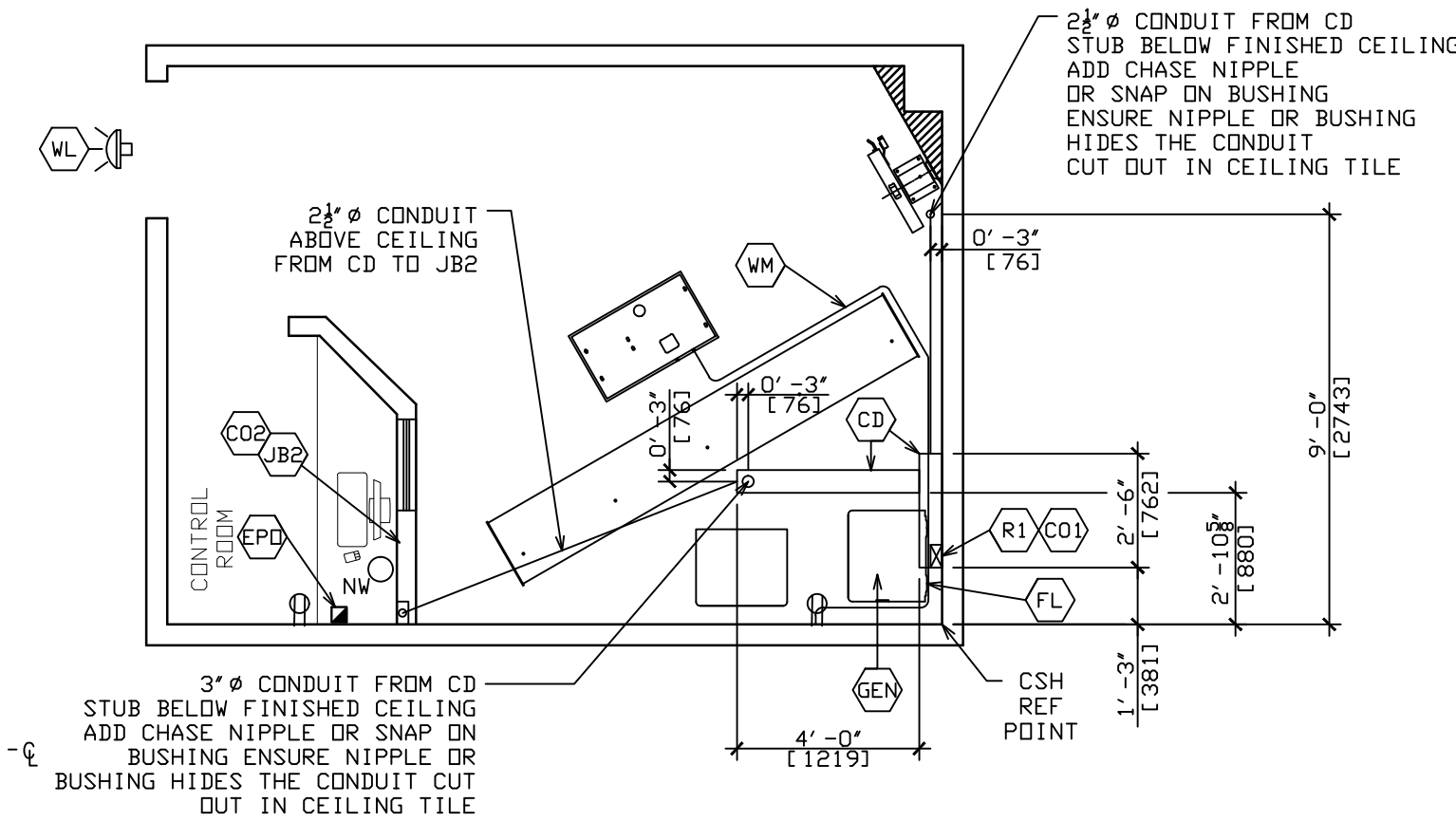
<u>DRX-QRAD SYS. OPERATING ENVIRONMENT REQUIREMENTS</u>	
AMBIENT TEMPERATURE:	-10°C TO +40°C
RELATIVE HUMIDITY:	15-75%
ATMOSPHERIC PRESSURE:	700 hPa to 1060 hpa
<u>DRX-QRAD SYS. TRANS AND NON-OPERATING ENVIRONMENT</u>	
AMBIENT TEMPERATURE:	-25°C TO +55°C
RELATIVE HUMIDITY:	5-95%
ATMOSPHERIC PRESSURE:	500 hPa to 1060 hpa

<u>MINIMUM CEILING HEIGHT:</u>	
FEET-IN:	8' - 0"
INCHES:	96"

CUSTOMER SIGNATURE:	DRAWN BY:	MASSARD
	DATE:	04-12-2013
DATE:	PROJECT MGR:	BARTSCH
	CHECKED BY:	BARTSCH
	DATE:	04. 01. 2015

PROJECT:		SHT.
VA FORT PIERCE CLINIC X-RAY		A1
FORT PIERCE, FL 34950		REV. F5

SIZE:	TITLE:
B	DRX-ASCEND
SCALE: SEE DRAWING SCALE	
SHEET: 2 OF 5	



ELECTRICAL LAYOUT

0 6" 1' 2' 3' 4' 5' 6'

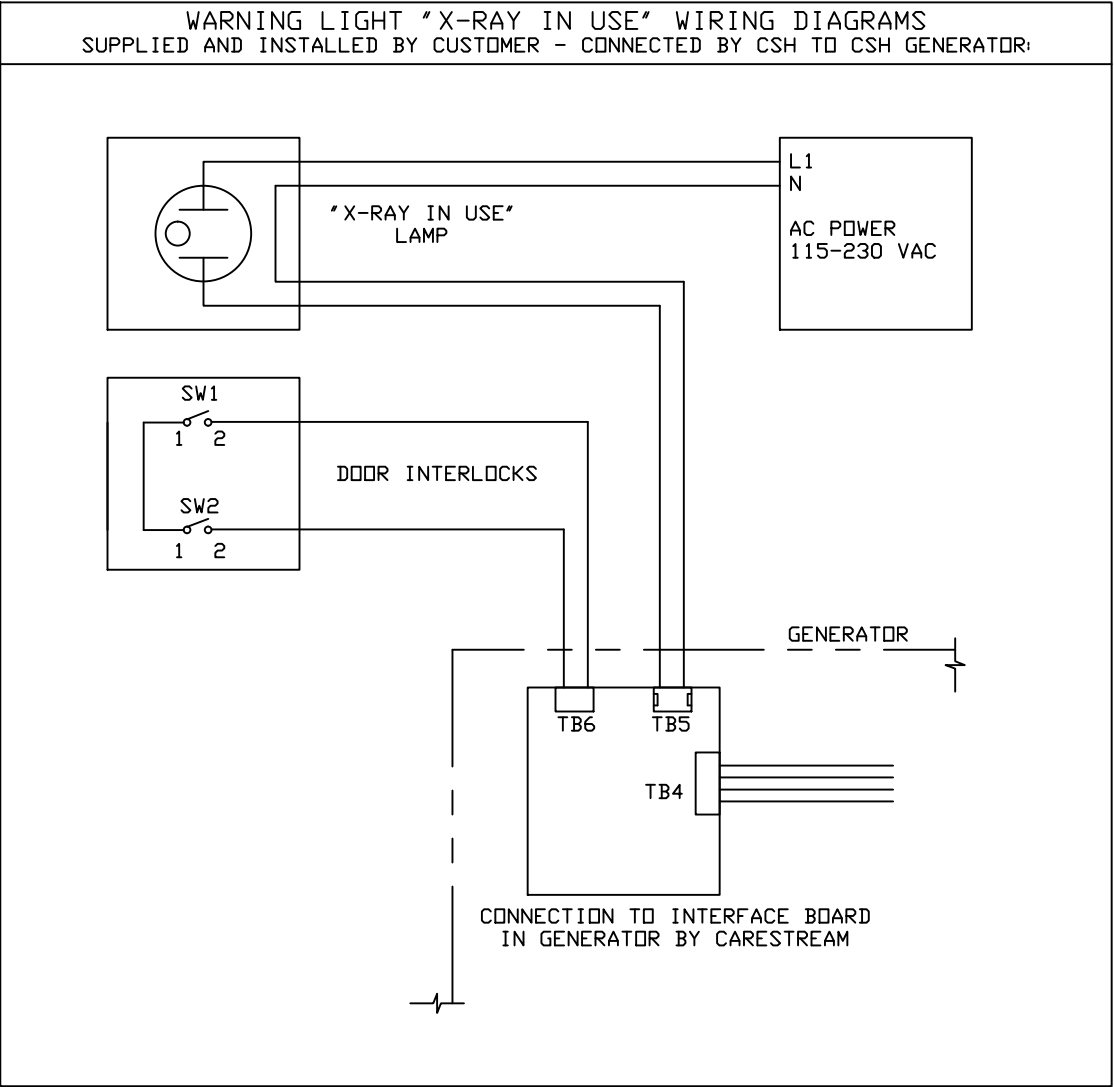
GRAPHIC SCALE

ELECTRICAL LEGEND

SYM.	SUPPLIED/INSTALLED BY CUSTOMER/CONTRACTOR
R1	RISER - 6" X 3" SURFACE MOUNTED WITH REMOVABLE COVERS FROM CD TO FINISHED FLOOR.
JB2	JUNCTION BOX - 6"X6" FLUSH MOUNTED IN CONTROL ROOM WALL - BOTTOM AT 12" A. F. F.
CD1	CUT-OUT - INSTALL RISER COVERS TO LEAVE A 4" OPENING "GAP" BETWEEN COVERS @ 24" A. F. F INCLUDE EDGE GROMMET.
CD2	CUT-OUT - 2 1/2" Ø WITH GROMMET ON FACE OF JB2
CD	CEILING DUCT - 6" X 3" ABOVE FINISHED CEILING, WITH REMOVABLE COVERS. PROVIDE DIVIDERS PER LOCAL CODE.
WM	WIRE MOLD - 2"X1" FROM TABLE TO GENERATOR AND 120 VAC OUTLET. ADHERE TO FLOOR APPROX. AS SHOWN.
GEN	GENERATOR - SEE SHEET E2
WL	"X-RAY IN USE" LIGHT PER CODE. CUSTOMER TO PROVIDE FIXTURE AND POWER, 120V AND 2 CONTACTS TO CSH GENERATOR.
EPD	OPTIONAL EPD SWITCH TO CUSTOMER SUPPLIED MAIN DISCONNECT. EXACT LOCATION PER LOCAL CODES OR BY CUSTOMER.
FL	CUSTOMER PROVIDED, 1 1/2" Ø SEAL-TIGHT, INCLUDE FITTINGS TO 480 VAC MAIN SUPPLY CABLES TO CARESTREAM GENERATOR. WIP LENGTH TO BE 6FT. OR PER LOCAL CODE. INSTALLED BY CUSTOMER ELECTRICIAN WHEN CONNECTING 480 VAC MAIN POWER TO CARESTREAM GENERATOR.
NOTE: ALL ELECTRICAL DUCTS AND CONNECTIONS MUST CONFORM TO THE N.E.C. CODES, IN ADDITION TO STATE AND LOCAL REGULATIONS FOR THE COUNTRY OR LOCALITY IN WHICH THE EQUIPMENT IS INSTALLED. SITE IS RESPONSIBLE TO DETERMINE ELECTRICAL DESIGN, INCLUDING NUMBER OF DIVIDERS IN CABLE TROUGH PER CODE.	
⊖	120 VAC OUTLET - EXACT LOCATION PER CUSTOMER.
○NW	NETWORK DROP

CUSTOMER SIGNATURE:		DRAWN BY:	MASSARD
		DATE:	04-12-2013
DATE:		PROJECT MGR:	BARTOSCH
		CHECKED BY:	BARTOSCH
		DATE:	04. 01. 2015
PROJECT:			SHT.
VA FORT PIERCE CLINIC			E 1
X-RAY			REV.
FORT PIERCE, FL 34950			F 5
SIZE:	TITLE:		
B	DRX-ASCEND		
SCALE: SEE DRAWING SCALE			SHEET: 3 OF 5

ELECTRICAL POWER REQUIREMENTS							
SYM.	GEN MODEL NO.	MAX POWER OUTPUT (kWh)	NOMINAL LINE VOLTAGE (VAC)	DISCONNECT TO GENERATOR 15FT. (5M) MAX.	MAIN DISCONNECT	RECOMMENDED DISTRIBUTION TRANSFORMER CAPACITY	MAX. INPUT LINE RESISTANCE (AT FULL-LOAD RMS)
GEN	QG-80	80	480	#4 AWG	100 AMPS	100 KVA	0.16 ohms
*NOTE: ALL INSTALLATIONS MUST MEET THE REQUIREMENTS OF LOCAL ELECTRICAL CODES. THE ABOVE VALUES ARE RECOMMENDED AS TYPICAL (UNLESS OTHERWISE SPECIFIED).							
DESCRIPTION; SUPPLIED AND INSTALLED BY CUSTOMERS' CONTRACTOR.							
1. ALL WIRE MUST BE COPPER. 2. ACTUAL WIRE SIZE DEPENDS ON POWER QUALITY AND DISTANCE BETWEEN MAINS POWER AND THE GENERATOR. 3. ALL WIRING AND GROUNDING MUST BE IN ACCORDANCE WITH NATIONAL ELECTRIC CODE (NFPA#70) OR LOCAL ELECTRICAL CODES. 4. THE DISCONNECT SWITCH MUST BE LOCATED WITHIN REACH OF THE OPERATOR. 5. INPUT VOLTAGE: 380-480 (±5%) VAC 50/60 Hz (CONFIGURED AT TIME OF INSTALLATION). 6. VOLTAGE IS THREE-PHASE Y-CONFIGURATION, MEASURED LINE-TO-LINE, BALANCED TO EARTH GROUND. (NOTE: ADDITIONAL NEUTRAL WIRE MAY BE USED IF REQUIRED BY LOCAL ELECTRICAL CODE.) 7. LINE REGULATION: 5% AT FULL LOAD. 8. GROUND WIRE IS 4 AWG. 9. CUSTOMER PROVIDED 1½" Ø SEALTIGHT WITH (2) 90° ELBOWS FROM WALL TO CARESTREAM GENERATOR. INSTALLED BY CUSTOMER ELECTRICIAN WHEN WIRING 480V POWER TO CARESTREAM GENERATOR 10. SPECIFICATIONS RE SUBJECT TO CHANGE.							



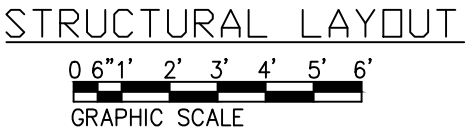
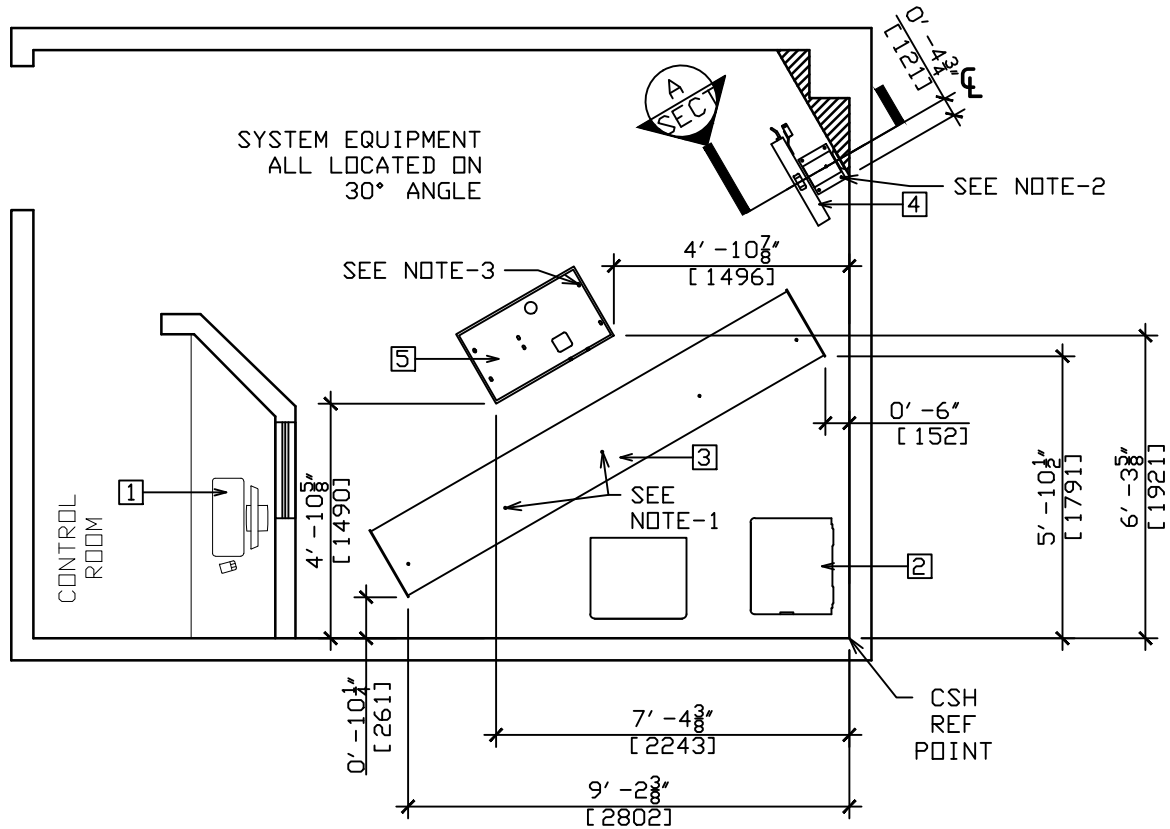
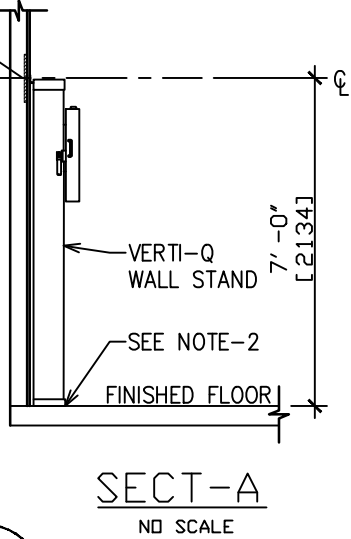
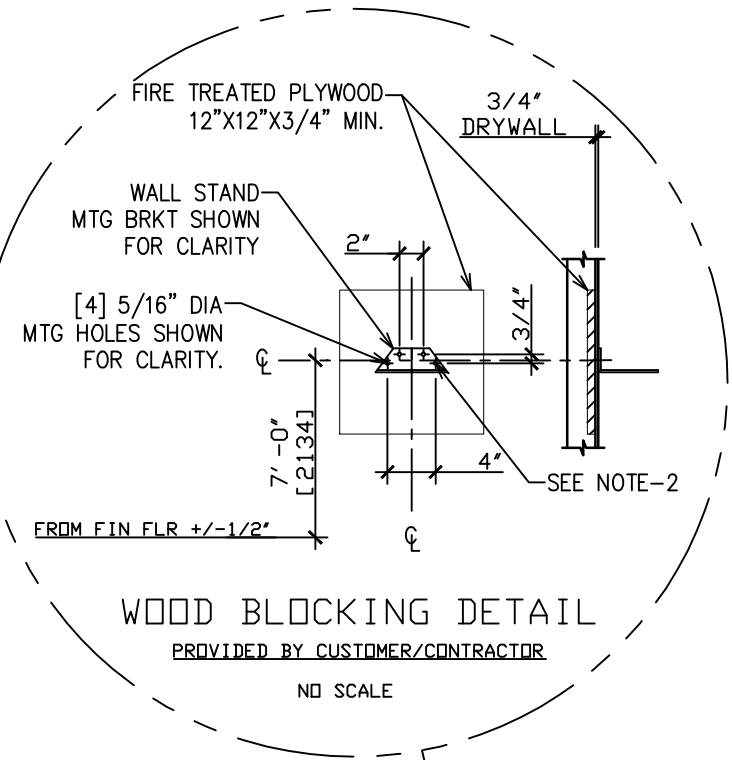
ELECTRICAL DETAIL

CUSTOMER SIGNATURE:		DRAWN BY: MASSARD	
		DATE: 04-12-2013	
		PROJECT MGR: BARTSCH	
DATE:		CHECKED BY: BARTSCH	
		DATE: 04. 01. 2015	
PROJECT: VA FORT PIERCE CLINIC X-RAY FORT PIERCE, FL 34950		SHT. E2	
		REV. F5	
SIZE: B	TITLE: DRX-ASCEND		
SCALE: SEE DRAWING SCALE		SHEET: 4 OF 5	

- NOTES:
1. 5X QS-550 BASE TRACK MOUNTING POINTS
MUST WITHSTAND 200 lbf [90.72 kg] PULL FORCE.
 2. 4X QW-420 VERTI-Q MOUNTING POINTS
MUST WITHSTAND 150 lbf [68.04 kg] PULL FORCE.
 3. 4X QT-750 QUIET LIFT TABLE MOUNTING POINTS
MUST WITHSTAND 500 lbf [226.80 kg] PULL FORCE.

STRUCTURAL LEGEND

ITEM	SUPPLIED/INSTALLED BY CARESTREAM HEALTH INC.
1	X-RAY CONTROL-COMPUTER & SYSTEM CONSOLE
2	QUANTUM GENERATOR
3	QS-550 FLOOR MOUNTED TUBE STAND WITH 10' FLR RAIL
4	QW-420 VERTI-Q BUCKY WALL STAND
5	QT-750 QUIET-LIFT 4 WAY FLOAT TABLE



CUSTOMER SIGNATURE:		DRAWN BY:	MASSARD
		DATE:	04-12-2013
		PROJECT MGR:	BARTSCH
DATE:		CHECKED BY:	BARTSCH
		DATE:	04. 01. 2015
PROJECT:			SHT.
VA FORT PIERCE CLINIC X-RAY			S1
FORT PIERCE, FL 34950			REV.
			F5
SIZE:	TITLE:		
B	DRX-ASCEND		
SCALE: SEE DRAWING SCALE			SHEET: 5 OF 5