

SECTION 26 51 00
INTERIOR LIGHTING

PART 1 - GENERAL

1.1 DESCRIPTION:

- A. This section specifies the furnishing, installation, and connection of the interior lighting systems. The terms "lighting fixture," "fixture," and "luminaire" are used interchangeably.

1.2 RELATED WORK

- A. Section 01 74 19, CONSTRUCTION WASTE MANAGEMENT: Disposal of lamps.
B. Section 02 41 00, DEMOLITION: Removal and disposal of lamps and ballasts.
C. Section 26 05 11, REQUIREMENTS FOR ELECTRICAL INSTALLATIONS: Requirements that apply to all sections of Division 26.
D. Section 26 05 19, LOW-VOLTAGE ELECTRICAL POWER CONDUCTORS AND CABLES: Low-voltage conductors.
E. section 26 27 26, WIRING DEVICES: Wiring devices used for control of the lighting systems.

1.3 QUALITY ASSURANCE

- A. Refer to Paragraph, QUALIFICATIONS (PRODUCTS AND SERVICES), in Section 26 05 11, REQUIREMENTS FOR ELECTRICAL INSTALLATIONS.

1.4 SUBMITTALS

- A. Submit six copies of the following in accordance with Section 26 05 11, REQUIREMENTS FOR ELECTRICAL INSTALLATIONS.

1. Shop Drawings:

- a. Submit the following information for each type of lighting fixture designated on the LIGHTING FIXTURE SCHEDULE, arranged in order of lighting fixture designation.
- b. Material and construction details, include information on housing and optics system.
- c. Physical dimensions and description.
- d. Wiring schematic and connection diagram.
- e. Installation details.
- f. Energy efficiency data.
- g. Photometric data based on laboratory tests complying with IES Lighting Measurements testing and calculation guides.

- ### 1.5 APPLICABLE PUBLICATIONS

- 26 51 00 - 2

F. Illuminating Engineering Society (IES):

- LM-79-08 Electrical and Photometric Measurements of
Solid-State Lighting Products
- LM-80-08 Measuring Lumen Maintenance of LED Light
Sources
- LM-82-12 Characterization of LED Light Engines and LED
Lamps for Electrical and Photometric Properties
as a Function of Temperature

G. Institute of Electrical and Electronic Engineers (IEEE):

- C62.41-91 Surge Voltages in Low Voltage AC Power Circuits

H. International Code Council (ICC):

- IBC-12 International Building Code

I. National Fire Protection Association (NFPA):

- 70-11 National Electrical Code (NEC)
- 101-12 Life Safety Code

J. National Electrical Manufacturer's Association (NEMA):

- C82.1-04 Lamp Ballasts - Line Frequency Fluorescent Lamp
Ballasts
- C82.2-02 Method of Measurement of Fluorescent Lamp
Ballasts
- C82.4-02 Lamp Ballasts - Ballasts for High-Intensity
Discharge and Low-Pressure Sodium (LPS) Lamps
(Multiple-Supply Type)
- C82.11-11 Lamp Ballasts - High Frequency Fluorescent Lamp
Ballasts
- LL-9-09 Dimming of T8 Fluorescent Lighting Systems
- SSL-1-10 Electronic Drivers for LED Devices, Arrays, or
Systems

K. Underwriters Laboratories, Inc. (UL):

- 496-08 Lampholders
- 542-0599 Fluorescent Lamp Starters
- 844-12 Luminaires for Use in Hazardous (Classified)
Locations
- 924-12 Emergency Lighting and Power Equipment
- 935-01 Fluorescent-Lamp Ballasts
- 1029-94 High-Intensity-Discharge Lamp Ballasts
- 1029A-06 Ignitors and Related Auxiliaries for HID Lamp
Ballasts

1598-08 Luminaires
1574-04 Track Lighting Systems
2108-04 Low-Voltage Lighting Systems
8750-09 Light Emitting Diode (LED) Light Sources for
Use in Lighting Products

SPEC WRITER NOTE: Delete between
// ---- // if not applicable to project.
Also delete any other item or paragraph
not applicable to the section and
renumber the paragraphs.

PART 2 - PRODUCTS

2.1 LIGHTING FIXTURES

- A. Shall be in accordance with NFPA, UL, as shown on drawings, and as specified.
- B. Sheet Metal:
 - 1. Shall be formed to prevent warping and sagging. Housing, trim and lens frame shall be true, straight (unless intentionally curved), and parallel to each other as designed.
 - 2. Wireways and fittings shall be free of burrs and sharp edges, and shall accommodate internal and branch circuit wiring without damage to the wiring.
 - 3. When installed, any exposed fixture housing surface, trim frame, door frame, and lens frame shall be free of light leaks.
 - 4. Hinged door frames shall operate smoothly without binding. Latches shall function easily by finger action without the use of tools.
- C. Ballasts and lamps shall be serviceable while the fixture is in its normally installed position. Ballasts shall not be mounted to removable reflectors or wireway covers unless so specified.
- D. Lamp Sockets:
 - 1. Fluorescent: Single slot entry type, requiring a one-quarter turn of the lamp after insertion. Lampholder contacts shall be the biting edge type.
 - 2. Compact Fluorescent: 4-pin.
 - 3. High Intensity Discharge (HID): Porcelain.
- E. Recessed fixtures mounted in an insulated ceiling shall be listed for use in insulated ceilings.
- F. Mechanical Safety: Lighting fixture closures (lens doors, trim frame, hinged housings, etc.) shall be retained in a secure manner by captive screws, chains, aircraft cable, captive hinges, or fasteners such that

they cannot be accidentally dislodged during normal operation or routine maintenance.

G. Metal Finishes:

1. The manufacturer shall apply standard finish (unless otherwise specified) over a corrosion-resistant primer, after cleaning to free the metal surfaces of rust, grease, dirt and other deposits. Edges of pre-finished sheet metal exposed during forming, stamping or shearing processes shall be finished in a similar corrosion resistant manner to match the adjacent surface(s). Fixture finish shall be free of stains or evidence of rusting, blistering, or flaking, and shall be applied after fabrication.
2. Interior light reflecting finishes shall be white with not less than 85 percent reflectances, except where otherwise shown on the drawing.
3. Exterior finishes shall be as shown on the drawings.

H. Lighting fixtures shall have a specific means for grounding metallic wireways and housings to an equipment grounding conductor.

I. Light Transmitting Components for Fluorescent Fixtures:

1. Shall be 100 percent virgin acrylic.
2. Flat lens panels shall have not less than 3 mm (1/8 inch) of average thickness.
3. Unless otherwise specified, lenses, reflectors, diffusers, and louvers shall be retained firmly in a metal frame by clips or clamping ring in such a manner as to allow expansion and contraction without distortion or cracking.

J. Lighting fixtures in hazardous areas shall be suitable for installation in Class and Division areas as defined in NFPA 70.

K. Compact fluorescent fixtures shall be manufactured specifically for compact fluorescent lamps with ballast integral to the fixture.

Assemblies designed to retrofit incandescent fixtures are prohibited except when specifically indicated for renovation of existing fixtures.

2.2 BALLASTS

SPEC WRITER NOTE: The designer shall specify instant start ballasts for use in low ambient temperature environments. The designer shall not specify instant start ballasts where lighting is controlled by occupancy sensors.

- A. Linear Fluorescent Lamp Ballasts: Multi-voltage (120 - 277V), electronic rapid-start type, designed for type and quantity of lamps indicated. Ballasts shall be designed for full light output unless dimmer or bi-level control is indicated. Ballasts shall include the following features:
1. Lamp end-of-life detection and shutdown circuit (T5 lamps only).
 2. Automatic lamp starting after lamp replacement.
 3. Sound Rating: Class A.
 4. Total Harmonic Distortion (THD): 10 percent or less.
 5. Transient Voltage Protection: IEEE C62.41.1 and IEEE C62.41.2, Category A or better.
 6. Operating Frequency: 20 kHz or higher.
 7. Lamp Current Crest Factor: 1.7 or less.
 8. Ballast Factor: 0.87 or higher unless otherwise indicated.
 9. Power Factor: 0.98 or higher.
 10. EMR/RFI Interference: Comply with CFR Title 47 Part 18 for limitations on electromagnetic and radio-frequency interference for non-consumer equipment.
 11. To facilitate multi-level lamp switching, lamps within fixture shall be wired with the outermost lamp at both sides of the fixture on the same ballast, the next inward pair on another ballast and so on to the innermost lamp (or pair of lamps). Within a given room, each switch shall uniformly control the same corresponding lamp (or lamp pairs) in all fixture units that are being controlled.
 12. Where three-lamp fixtures are indicated, unless switching arrangements dictate otherwise, utilize a common two-lamp ballast to operate the center lamp in pairs of adjacent units that are mounted in a continuous row. The ballast fixture and slave-lamp fixture shall be factory wired with leads or plug devices to facilitate this circuiting. Individually mounted fixtures and the odd fixture in a row shall utilize a single-lamp ballast for operation of the center lamp.
 13. Dimming ballasts shall be as per above, except dimmable from 100% to 5% of rated lamp lumens. Dimming ballasts shall be fully compatible with the dimming controls.
- B. Low-Frequency Linear T8 Fluorescent Lamp Ballasts (allowed for Surgery Suites, Critical Care Units, and Animal Labs): Multi-voltage (120 - 277V), hybrid electronic-electromagnetic rapid-start type, designed for

type and quantity of lamps indicated. Ballast shall be designed for full light output. Ballasts shall include the following features:

1. Automatic lamp starting after lamp replacement.
 2. Sound Rating: Class A.
 3. Total Harmonic Distortion (THD): 20 percent or less.
 4. Transient Voltage Protection: IEEE C62.41.1 and IEEE C62.41.2, Category A or better.
 5. Operating Frequency: 60 Hz.
 6. Lamp Current Crest Factor: 1.7 or less.
 7. Ballast Factor: 0.85 or higher unless otherwise indicated.
 8. Power Factor: 0.90 or higher.
 9. Interference: Comply with CFR Title 47 Part 18 for limitations on electromagnetic and radio-frequency interference for non-consumer equipment.
 10. To facilitate multi-level lamp switching, lamps within fixture shall be wired with the outermost lamp at both sides of the fixture on the same ballast, the next inward pair on another ballast and so on to the innermost lamp (or pair of lamps). Within a given room, each switch shall uniformly control the same corresponding lamp (or lamp pairs) in all fixture units that are being controlled.
 11. Where three-lamp fixtures are indicated, unless switching arrangements dictate otherwise, utilize a common two-lamp ballast to operate the center lamp in pairs of adjacent units that are mounted in a continuous row. The ballast fixture and slave-lamp fixture shall be factory wired with leads or plug devices to facilitate this circuiting. Individually mounted fixtures and the odd fixture in a row shall utilize a single-lamp ballast for operation of the center lamp.
- C. Compact Fluorescent Lamp Ballasts: Multi-voltage (120 - 277V), electronic programmed rapid-start type, designed for type and quantity of lamps indicated. Ballast shall be designed for full light output unless dimmer or bi-level control is indicated. Ballasts shall include the following features:
1. Lamp end-of-life detection and shutdown circuit.
 2. Automatic lamp starting after lamp replacement.
 3. Sound Rating: Class A.
 4. Total Harmonic Distortion (THD): 10 percent or less.

5. Transient Voltage Protection: IEEE C62.41.1 and IEEE C62.41.2, Category A or better.
 6. Operating Frequency: 20 kHz or higher.
 7. Lamp Current Crest Factor: 1.7 or less.
 8. Ballast Factor: 0.95 or higher unless otherwise indicated.
 9. Power Factor: 0.98 or higher.
 10. Interference: Comply with CFR Title 47 Part 18 for limitations on electromagnetic and radio-frequency interference for non-consumer equipment.
 11. Dimming ballasts shall be as per above, except dimmable from 100% to 5% of rated lamp lumens. Dimming ballasts shall be fully compatible with the dimming controls.
- D. Ballasts for HID fixtures: Multi-tap voltage (120 - 480V) electromagnetic ballast for high intensity discharge lamps. Include the following features unless otherwise indicated:
1. Ballast Circuit: Constant-wattage autotransformer or regulating high-power-factor type.
 2. Minimum Starting Temperature: Minus 22 deg F (Minus 30 deg C) for single-lamp ballasts.
 3. Rated Ambient Operating Temperature: 104 deg F (40 deg C).
 4. Open-circuit operation that will not reduce average life.
 5. Low-Noise Ballasts: Manufacturers' standard epoxy-encapsulated models designed to minimize audible fixture noise.
- E. Electronic ballast for HID metal-halide lamps shall include the following features unless otherwise indicated:
1. Minimum Starting Temperature: Minus 20 deg F (Minus 29 deg C) for single-lamp ballasts.
 2. Rated Ambient Operating Temperature: 130 deg F (54 deg C).
 3. Lamp end-of-life detection and shutdown circuit.
 4. Sound Rating: Class A.
 5. Total Harmonic Distortion (THD): 20 percent or less.
 6. Transient Voltage Protection: IEEE C62.41.1 and IEEE C62.41.2, Category A or better.
 7. Lamp Current Crest Factor: 1.5 or less.
 8. Power Factor: 0.90 or higher.
 9. Interference: Comply with CFR Title 47 Part 18 for limitations on electromagnetic and radio-frequency interference for non-consumer equipment.

10. Protection: Resettable thermal.

2.3 FLUORESCENT EMERGENCY BALLAST

- A. Self-contained, modular, battery-inverter unit, factory mounted within lighting fixture housing and compatible with ballast.
 1. Emergency Connection: Operate one fluorescent lamp(s) continuously at an output of 1100 lumens each. Connect unswitched circuit to battery-inverter unit and switched circuit to fixture ballast.
 2. Test Push Button and Indicator Light: Visible and accessible without opening fixture or entering ceiling space.
 - a. Push Button: Push-to-test type, in unit housing, simulates loss of normal power and demonstrates unit operability.
 - b. Indicator Light: LED indicates normal power on. Normal glow indicates trickle charge; bright glow indicates charging at end of discharge cycle.
 3. Battery: Sealed, maintenance-free, nickel-cadmium type.
 4. Charger: Fully automatic, solid-state, constant-current type with sealed power transfer relay.
 5. Integral Self-Test: Automatically initiates test of unit emergency operation at required intervals. Test failure is annunciated by an integral audible alarm and a flashing LED.

2.4 EMERGENCY LIGHTING UNIT

- A. Complete, self-contained unit with batteries, battery charger, one or more local or remote lamp heads with lamps, under-voltage relay, and test switch.
 1. Enclosure: Shall be cast aluminum. Enclosure shall be suitable for the environmental conditions in which installed.
 2. Lamp Heads: Horizontally and vertically adjustable, mounted on the face of the unit, except where otherwise indicated.
 3. Lamps: Shall be sealed-beam MR-16 halogen, rated not less than 12 watts at the specified DC voltage.
 4. Battery: Shall be maintenance-free nickel-cadmium. Minimum normal life shall be minimum of 10 years.
 5. Battery Charger: Dry-type full-wave rectifier with charging rates to maintain the battery in fully-charged condition during normal operation, and to automatically recharge the battery within 12 hours following a 1-1/2 hour continuous discharge.

6. Integral Self-Test: Automatically initiates test of unit emergency operation at required intervals. Test failure is annunciated by an integral audible alarm and a flashing LED.

2.5 LAMPS

A. Linear and U-shaped T5 and T8 Fluorescent Lamps:

1. Except as indicated below, lamps shall be low-mercury energy saving type, have a color temperature between 3500° and 4100°K, a Color Rendering Index (CRI) equal or greater than 80, average rated life equal to or greater than 24,000 hours when used with an instant start ballast and 30,000 hours when used with a programmed or rapid start ballast (based on 3 hour starts), and be suitable for use with dimming ballasts, unless otherwise indicated.
 - a. Over the beds in Intensive Care, Coronary Care, Recovery, Life Support, and Observation and Treatment areas; Electromyographic, Autopsy (Necropsy), Surgery, and certain dental rooms (Examination, Oral Hygiene, Oral Surgery, Recovery, Labs, Treatment, and X-Ray) use color corrected lamps having a CRI of 85 or above and a correlated color temperature between 5000 and 6000°K, as shown on the drawings.
 - b. Other areas as shown on the drawings.
2. Lamps shall comply with EPA Toxicity Characteristic Leachate Procedure (TCLP) requirements.

B. Compact Fluorescent Lamps:

1. T4, CRI 80 (minimum), color temperature 3500°K, average rated life equal to or greater than 12,000 hours (based on 3 hour starts), and suitable for use with dimming ballasts, unless otherwise indicated.
2. Lamps shall comply with EPA Toxicity Characteristic Leachate Procedure (TCLP) requirements.

C. High Intensity Discharge Lamps:

1. High-Pressure Sodium Lamps: CRI 21 (minimum), color temperature 1900°K, and average rated life of 24,000 hours.
 - a. Lamps shall comply with EPA Toxicity Characteristic Leachate Procedure (TCLP) requirements.
2. Pulse-Start, Metal-Halide Lamps: Minimum CRI 65 (minimum), color temperature 4000°K, and average rated life of 15,000 hours (based on 10 hour starts).

3. Ceramic, Pulse-Start, Metal-Halide Lamps: CRI 80 (minimum), color temperature 4000°K, and average rated life of 12,000 hours (based on 10 hour starts).

2.6 RADIO-INTERFERENCE-FREE FLUORESCENT FIXTURES

- A. Shall be specially designed for suppressing radio-frequency energy produced within the fixtures, and shall comply with Department of Defense MIL-STD-461F and IEC IP65.
- B. Lenses shall have metal mesh to prevent or reduce radio-frequency interference. The effective light transmittance of the lenses shall be a minimum of 75 percent.
- C. Fixture finish shall be anti-microbial.
- D. Provide RFI line filters integral to the fixtures and wired in series with the supply circuit conductors.
- E. Ballasts shall be as specified in this Section.

2.7 WALL MOUNTED FLUORESCENT BEDLIGHT FIXTURES

- A. Fixtures shall be lensed.
- B. Fixtures shall be rated for 120 Volt operation, and be powered through the patient wall unit per Section 10 25 13, PATIENT BED SERVICE WALLS.
- C. Provide 4-position, pull cord switch to control the upward and downward portion of the light separately and simultaneously. Include an off position, except in single bed rooms where the switch shall energize and de-energize the downward light only. In the single bed rooms, provide a 2-position pull cord switch for "on-off" control of the downward lamps.

2.8 LED EXIT LIGHT FIXTURES

- A. Exit light fixtures shall meet applicable requirements of NFPA and UL.
- B. Housing and door shall be die-cast aluminum.
- C. For general purpose exit light fixtures, door frame shall be hinged, with latch. For vandal-resistant exit light fixtures, door frame shall be secured with tamper-resistant screws.
- D. Finish shall be satin or fine-grain brushed aluminum.
- E. There shall be no radioactive material used in the fixtures.
- F. Fixtures:
 1. Inscription panels shall be cast or stamped aluminum a minimum of 2.25 mm (0.090 inch) thick, stenciled with 150 mm (6 inch) high letters, baked with red color stable plastic or fiberglass. Lamps

shall be luminous Light Emitting Diodes (LED) mounted in center of letters on red color stable plastic or fiberglass.

2. Double-Faced Fixtures: Provide double-faced fixtures where required or as shown on drawings.
3. Directional Arrows: Provide directional arrows as part of the inscription panel where required or as shown on drawings.
Directional arrows shall be the "chevron-type" of similar size and width as the letters and meet the requirements of NFPA 101.

G. Voltage: Multi-voltage (120 - 277V).

2.10 LED LIGHT FIXTURES

A. General:

1. LED light fixtures shall be in accordance with IES, NFPA, UL, as shown on the drawings, and as specified.
2. LED light fixtures shall be Reduction of Hazardous Substances (RoHS)-compliant.
3. LED drivers shall include the following features unless otherwise indicated:
 - a. Minimum efficiency: 85% at full load.
 - b. Minimum Operating Ambient Temperature: -20° C. (-4° F.)
 - c. Input Voltage: 120 - 277V (±10%) at 60 Hz.
 - d. Integral short circuit, open circuit, and overload protection.
 - e. Power Factor: ≥ 0.95.
 - f. Total Harmonic Distortion: ≤ 20%.
 - g. Comply with FCC 47 CFR Part 15.
4. LED modules shall include the following features unless otherwise indicated:
 - a. Comply with IES LM-79 and LM-80 requirements.
 - b. Minimum CRI 80 and color temperature 3000° K unless otherwise specified in LIGHTING FIXTURE SCHEDULE.
 - c. Minimum Rated Life: 50,000 hours per IES L70.
 - d. Light output lumens as indicated in the LIGHTING FIXTURE SCHEDULE.

B. LED Downlights:

1. Housing, LED driver, and LED module shall be products of the same manufacturer.

C. LED Troffers:

1. LED drivers, modules, and reflector shall be accessible, serviceable, and replaceable from below the ceiling.

2. Housing, LED driver, and LED module shall be products of the same manufacturer.

PART 3 - EXECUTION

3.1 INSTALLATION

- A. Installation shall be in accordance with the NEC, manufacturer's instructions, and as shown on the drawings or specified.
- B. Align, mount, and level the lighting fixtures uniformly.
- C. Wall-mounted fixtures shall be attached to the studs in the walls, or to a 20 gauge metal backing plate that is attached to the studs in the walls. Lighting fixtures shall not be attached directly to gypsum board.
- D. Lighting Fixture Supports:
 1. Shall provide support for all of the fixtures. Supports may be anchored to channels of the ceiling construction, to the structural slab or to structural members within a partition, or above a suspended ceiling.
 2. Shall maintain the fixture positions after cleaning and relamping.
 3. Shall support the lighting fixtures without causing the ceiling or partition to deflect.
 4. Hardware for recessed fluorescent fixtures:
 - a. Where the suspended ceiling system is supported at the four corners of the fixture opening, hardware devices shall clamp the fixture to the ceiling system structural members, or plaster frame at not less than four points in such a manner as to resist spreading of the support members and safely lock the fixture into the ceiling system.
 - b. Where the suspended ceiling system is not supported at the four corners of the fixture opening, hardware devices shall independently support the fixture from the building structure at four points.
 5. Hardware for surface mounting fluorescent fixtures to suspended ceilings:
 - a. In addition to being secured to any required outlet box, fixtures shall be bolted to a grid ceiling system at four points spaced near the corners of each fixture. The bolts shall be not less than 6 mm (1/4 inch) secured to channel members attached to and spanning the tops of the ceiling structural grid members. Non-

turning studs may be attached to the ceiling structural grid members or spanning channels by special clips designed for the purpose, provided they lock into place and require simple tools for removal.

- b. In addition to being secured to any required outlet box, fixtures shall be bolted to ceiling structural members at four points spaced near the corners of each fixture. Pre-positioned 6 mm (1/4 inch) studs or threaded plaster inserts secured to ceiling structural members shall be used to bolt the fixtures to the ceiling. In lieu of the above, 6 mm (1/4 inch) toggle bolts may be used on new or existing ceiling provided the plaster and lath can safely support the fixtures without sagging or cracking.

SPEC WRITER NOTE: Include the following paragraph for projects in seismic areas of moderate-high, high and very high seismicities as listed in Table 4 of VA Handbook H-18-8, Seismic Design Requirements. Coordinate with the structural engineer.

6. Hardware for recessed lighting fixtures:

- a. All fixture mounting devices connecting fixtures to the ceiling system or building structure shall have a capacity for a horizontal force of 100 percent of the fixture weight and a vertical force of 400 percent of the fixture weight.
- b. Mounting devices shall clamp the fixture to the ceiling system structure (main grid runners or fixture framing cross runners) at four points in such a manner as to resist spreading of these supporting members. Each support point device shall utilize a screw or approved hardware to "lock" the fixture housing to the ceiling system, restraining the fixture from movement in any direction relative to the ceiling. The screw (size No. 10 minimum) or approved hardware shall pass through the ceiling member (T-bar, channel or spline), or it may extend over the inside of the flange of the channel (or spline) that faces away from the fixture, in a manner that prevents any fixture movement.
- c. In addition to the above, the following is required for fixtures exceeding 9 kg (20 pounds) in weight.
 - 1) Where fixtures mounted in ASTM Standard C635 "Intermediate Duty" and "Heavy Duty" ceilings and weigh between 9 kg and 25 kg (20 pounds and 56 pounds), provide two 12 gauge safety

hangers hung slack between diagonal corners of the fixture and the building structure.

- 2) Where fixtures weigh over 25 kg (56 pounds), they shall be independently supported from the building structure by approved hangers. Two-way angular bracing of hangers shall be provided to prevent lateral motion.

- d. Where ceiling cross runners are installed for support of lighting fixtures, they must have a carrying capacity equal to that of the main ceiling runners and be rigidly secured to the main runners.

7. Surface mounted lighting fixtures:

- a. Fixtures shall be bolted against the ceiling independent of the outlet box at four points spaced near the corners of each unit. The bolts (or stud-clips) shall be minimum 6 mm (1/4 inch) bolt, secured to main ceiling runners and/or secured to cross runners. Non-turning studs may be attached to the main ceiling runners and cross runners with special non-friction clip devices designed for the purpose, provided they bolt through the runner, or are also secured to the building structure by 12 gauge safety hangers. Studs or bolts securing fixtures weighing in excess of 25 kg (56 pounds) shall be supported directly from the building structure.
- b. Where ceiling cross runners are installed for support of lighting fixtures, they must have a carrying capacity equal to that of the main ceiling runners and be rigidly secured to the main runners.
- c. Fixtures less than 6.8 kg (15 pounds) in weight and occupying less than 3715 sq cm (two square feet) of ceiling area may, when designed for the purpose, be supported directly from the outlet box when all the following conditions are met.
 - 1) Screws attaching the fixture to the outlet box pass through round holes (not key-hole slots) in the fixture body.
 - 2) The outlet box is attached to a main ceiling runner (or cross runner) with approved hardware.
 - 3) The outlet box is supported vertically from the building structure.
- d. Fixtures mounted in open construction shall be secured directly to the building structure with approved bolting and clamping devices.

8. Single or double pendant-mounted lighting fixtures:

- a. Each stem shall be supported by an approved outlet box mounted swivel joint and canopy which holds the stem captive and provides spring load (or approved equivalent) dampening of fixture oscillations. Outlet box shall be supported vertically from the building structure.
- 9. Outlet boxes for support of lighting fixtures (where permitted) shall be secured directly to the building structure with approved devices or supported vertically in a hung ceiling from the building structure with a nine gauge wire hanger, and be secured by an approved device to a main ceiling runner or cross runner to prevent any horizontal movement relative to the ceiling.
- E. Furnish and install the new lamps as specified for all lighting fixtures installed under this project, and for all existing lighting fixtures reused under this project.
- F. The electrical and ceiling trades shall coordinate to ascertain that approved lighting fixtures are furnished in the proper sizes and installed with the proper devices (hangers, clips, trim frames, flanges, etc.), to match the ceiling system being installed.
- G. Bond lighting fixtures to the grounding system as specified in Section 26 05 26, GROUNDING AND BONDING FOR ELECTRICAL SYSTEMS.
- H. At completion of project, replace all defective components of the lighting fixtures at no cost to the Government.

3.2 ACCEPTANCE CHECKS AND TESTS

A. Perform the following:

1. Visual Inspection:

- a. Verify proper operation by operating the lighting controls.
- b. Visually inspect for damage to fixtures, lenses, reflectors, diffusers, and louvers. Clean fixtures, lenses, reflectors, diffusers, and louvers that have accumulated dust, dirt, or fingerprints during construction.

2. Electrical tests:

- a. Exercise dimming components of the lighting fixtures over full range of dimming capability by operating the control device(s) in the presence of the COTR. Observe for visually detectable flicker over full dimming range, and replace defective components at no cost to the Government.
- b. Burn-in all lamps that require specific aging period to operate properly, prior to occupancy by Government. Burn-in period to be

FTR2 series

WALL / CEILING MOUNT

PRODUCT HIGHLIGHTS

- Designed for either wall, ceiling or pendant mounting.
- Versatile linear choice. The cross-section dimensions allow this efficient luminaire to fit into most architectural spaces conveniently and unobtrusively.
- The entire series is a singular cross-section, allowing for long row composition.
- Designed around T5 and T8 lamps.
- Diffuser is available in either acrylic or polycarbonate. Both diffusers incorporate a well-defined linear prism design.

CONSTRUCTION - The housing and end plates are die-formed 20 gauge cold-rolled steel.

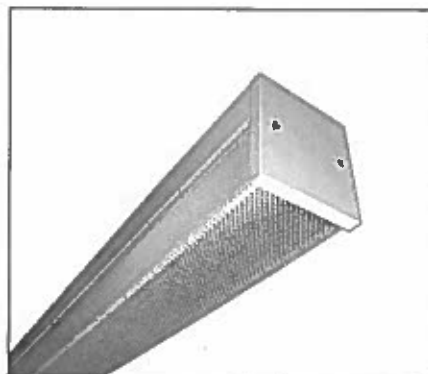
SHIELDING - One-piece clear extruded wrap around acrylic prismatic lens standard. Also available with optional polycarbonate lens.

ELECTRICAL - Solid-state electronic ballast. Polycarbonate sockets.

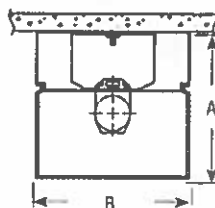
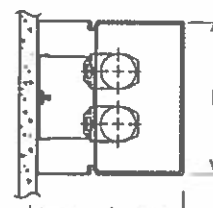
FINISH - All reflective surfaces are finished with a high reflectance, lighting fixture white polyester powder.

LISTING - UL Listed to U.S. and Canadian safety standards. Suitable for damp locations. IBEW Union made in the U.S.A.

PHOTOMETRICS - Please visit our web site at www.lsi-industries.com for detailed photometric data.



DIMENSIONS

CEILING
MOUNTWALL
MOUNT

Fixture	(A)	(B)	LENGTH
W44-2'	4-11/16" (119mm)	4-3/8" (109mm)	24-3/16" (614mm)
W44-4'	4-11/16" (119mm)	4-3/8" (109mm)	48-3/16" (1223mm)
W44-8'	4-11/16" (119mm)	4-3/8" (109mm)	96-3/16" (2442mm)

ORDERING INFORMATION

TYPICAL ORDER EXAMPLE: **W44 4 2 28 SS5 EM UE**

Prefix	Length	Lamps In Cross-Section	Lamp Type	Ballasts	Options	Voltage
W44	2 - 2'	1	14 - 14W 22' T5	SSB - Biac Instant Start SSBR - Biac Program Rapid Start SS5 - T5 Instant Start SS5R - T5 Rapid Start SS5D - T5 Dimming (specify type) SS5HO - T5HO SS5D - T8 Dimming (specify type) SS5L - T8 Low Watt SS5HL - T8 High Power Factor SS5R - T8 Rapid Start SS510 - T8 <10% THD Instant Start (For dual ballasts add "2" Example: SS02)	F - Fusing EM - Emergency Pack EMDL - Emergency Pack Damp Location GFI - GFI Outlet (120v only) LX - Polycarbonate Lens PS - Pull Switch (120v only) PS4 - 4-position Switch PM - Prewired Plug-in (See options page) SSW - Separate Switching TPH - Tamperproof Hardware TS - Toggle Switch	UE - Universal Electronic (120-277V)
		2	17 - 17W 24' T8			
	4 - 4'	1	40BX - 40W Biac 50BX - 50W Biac 55BX - 55W Biac			
		2	28 - 28W 45' T5 32 - 32W 48' T8			
	8 - 8'	2	28 - 28W 45' T5 32 - 32W 48' T8			
		2	28 - 28W 45' T5 32 - 32W 48' T8			

1- Available on 2-lamp/ballast unit only

ACCESSORY ORDERING INFORMATION	
Description	Order Number
Joiner Band	JB-W44

12/10/08

© 2009

LSI INDUSTRIES INC

Project Name _____ Fixture Type _____

Catalog # _____



FTR2a

Industrial Work Light

60W-nondim-277V

FTR2a

Surface (slotted channel framing, ceiling, or other substrate as detailed by Architect—see architectural drawings for details) mounted linear fluorescent utility light shall be about 0 feet/4¼ inches in depth by 0 feet/4¼ inches in width by 4 feet/0 inches in overall length (see respective Vendor's current datasheets for actual dimensions). Luminaire shall consist of a formed steel housing with an opal acrylic lens. Luminaire metal components shall be factory finished in white antimicrobial paint. In all equipment rooms, Contractor shall coordinate mounting surface with Architect and shall coordinate layout with other equipment. Luminaire shall exhibit two lamps in cross section and shall be furnished with fused integral, metal-cased, high power factor (0.98 or greater), 0.88 ballast factor, THD \leq 10%, program-start electronic fluorescent nondim ballast(s) (Universal #B232PUNVHP-A) with end-of-lamp-life protection mode suitable for operation at 277V. Luminaire shall be lamped with two [2] GE F32T8/XL/SPX35/HL/ECO (#10326) or Philips F32T8/ADV835/ALTO (#13988-1) or Sylvania FO32/835/XPS/ECO (#21697) 32-watt, 3,500K color temperature, 3100-lumen, 85CRI, 30,000-hour rated life linear T8 fluorescent lamps. Lampholders shall be for rapid-start/program-start operation and contacts shall be the knife-edge type, shall be of the single slot entry type requiring a one quarter turn of the lamp after insertion, and shall conform to the applicable requirements of UL 542. Luminaire shall be UL/NRTL listed and labeled for application.

- ▶ Legion [see luminaire schedule on plans for catalog number]
- ▶ LSI [see luminaire schedule on plans for catalog number]
- ▶ Prudential [see luminaire schedule on plans for catalog number]
- ▶ Williams [see luminaire schedule on plans for catalog number]

1 2 3 4 5 6 7 8 9 10 11 12 13 14 15 16 17 18 19 20 21 22 23 24 25 26 27 28 29 30 31 32 33 34 35 36 37 38 39 40 41 42 43 44 45 46 47 48 49 50 51 52 53 54 55 56 57 58 59 60 61 62 63 64 65 66 67 68 69 70 71 72 73 74 75 76 77 78 79 80 81 82 83 84 85 86 87 88 89 90 91 92 93 94 95 96 97 98 99 100 101 102 103 104 105 106 107 108 109 110 111 112 113 114 115 116 117 118 119 120 121 122 123 124 125 126 127 128 129 130 131 132 133 134 135 136 137 138 139 140 141 142 143 144 145 146 147 148 149 150 151 152 153 154 155 156 157 158 159 160 161 162 163 164 165 166 167 168 169 170 171 172 173 174 175 176 177 178 179 180 181 182 183 184 185 186 187 188 189 190 191 192 193 194 195 196 197 198 199 200 201 202 203 204 205 206 207 208 209 210 211 212 213 214 215 216 217 218 219 220 221 222 223 224 225 226 227 228 229 230 231 232 233 234 235 236 237 238 239 240 241 242 243 244 245 246 247 248 249 250 251 252 253 254 255 256 257 258 259 260 261 262 263 264 265 266 267 268 269 270 271 272 273 274 275 276 277 278 279 280 281 282 283 284 285 286 287 288 289 290 291 292 293 294 295 296 297 298 299 300 301 302 303 304 305 306 307 308 309 310 311 312 313 314 315 316 317 318 319 320 321 322 323 324 325 326 327 328 329 330 331 332 333 334 335 336 337 338 339 340 341 342 343 344 345 346 347 348 349 350 351 352 353 354 355 356 357 358 359 360 361 362 363 364 365 366 367 368 369 370 371 372 373 374 375 376 377 378 379 380 381 382 383 384 385 386 387 388 389 390 391 392 393 394 395 396 397 398 399 400 401 402 403 404 405 406 407 408 409 410 411 412 413 414 415 416 417 418 419 420 421 422 423 424 425 426 427 428 429 430 431 432 433 434 435 436 437 438 439 440 441 442 443 444 445 446 447 448 449 450 451 452 453 454 455 456 457 458 459 460 461 462 463 464 465 466 467 468 469 470 471 472 473 474 475 476 477 478 479 480 481 482 483 484 485 486 487 488 489 490 491 492 493 494 495 496 497 498 499 500 501 502 503 504 505 506 507 508 509 510 511 512 513 514 515 516 517 518 519 520 521 522 523 524 525 526 527 528 529 530 531 532 533 534 535 536 537 538 539 540 541 542 543 544 545 546 547 548 549 550 551 552 553 554 555 556 557 558 559 560 561 562 563 564 565 566 567 568 569 570 571 572 573 574 575 576 577 578 579 580 581 582 583 584 585 586 587 588 589 590 591 592 593 594 595 596 597 598 599 600 601 602 603 604 605 606 607 608 609 610 611 612 613 614 615 616 617 618 619 620 621 622 623 624 625 626 627 628 629 630 631 632 633 634 635 636 637 638 639 640 641 642 643 644 645 646 647 648 649 650 651 652 653 654 655 656 657 658 659 660 661 662 663 664 665 666 667 668 669 670 671 672 673 674 675 676 677 678 679 680 681 682 683 684 685 686 687 688 689 690 691 692 693 694 695 696 697 698 699 700 701 702 703 704 705 706 707 708 709 710 711 712 713 714 715 716 717 718 719 720 721 722 723 724 725 726 727 728 729 730 731 732 733 734 735 736 737 738 739 740 741 742 743 744 745 746 747 748 749 750 751 752 753 754 755 756 757 758 759 760 761 762 763 764 765 766 767 768 769 770 771 772 773 774 775 776 777 778 779 780 781 782 783 784 785 786 787 788 789 790 791 792 793 794 795 796 797 798 799 800 801 802 803 804 805 806 807 808 809 810 811 812 813 814 815 816 817 818 819 820 821 822 823 824 825 826 827 828 829 830 831 832 833 834 835 836 837 838 839 840 841 842 843 844 845 846 847 848 849 850 851 852 853 854 855 856 857 858 859 860 861 862 863 864 865 866 867 868 869 870 871 872 873 874 875 876 877 878 879 880 881 882 883 884 885 886 887 888 889 890 891 892 893 894 895 896 897 898 899 900 901 902 903 904 905 906 907 908 909 910 911 912 913 914 915 916 917 918 919 920 921 922 923 924 925 926 927 928 929 930 931 932 933 934 935 936 937 938 939 940 941 942 943 944 945 946 947 948 949 950 951 952 953 954 955 956 957 958 959 960 961 962 963 964 965 966 967 968 969 970 971 972 973 974 975 976 977 978 979 980 981 982 983 984 985 986 987 988 989 990 991 992 993 994 995 996 997 998 999 1000 1001 1002 1003 1004 1005 1006 1007 1008 1009 1010 1011 1012 1013 1014 1015 1016 1017 1018 1019 1020 1021 1022 1023 1024 1025 1026 1027 1028 1029 1030 1031 1032 1033 1034 1035 1036 1037 1038 1039 104

FTR2b

Industrial Work Light

120W-nondim-277V

FTR2b

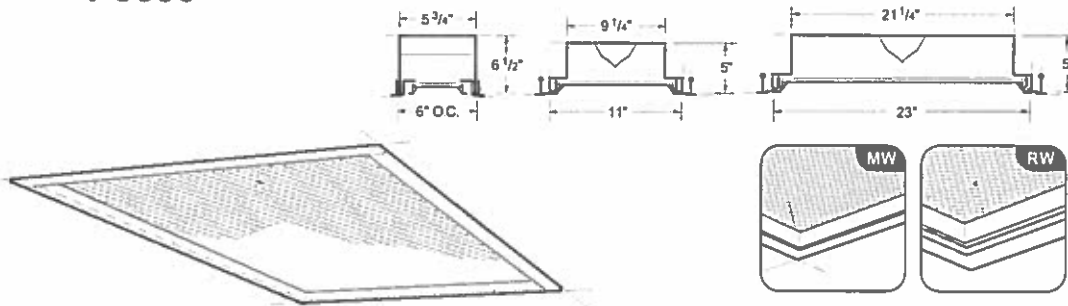
Surface (slotted channel framing, ceiling, or other substrate as detailed by Architect—see architectural drawings for details) mounted linear fluorescent utility light shall be similar to Type FTR2a, except for possible mounting surface and details, shall be 8 feet/0 inches in overall length, shall be furnished with fused integral, metal-cased, high power factor (0.98 or greater), 0.88 ballast factor, THD \leq 10%, program-start electronic fluorescent nondim ballast(s) (Universal #B232PUNVHP-A) with end-of-lamp-life protection mode suitable for operation at 277V, and shall be lamped with four [4] GE F32T8/XL/SPX35/HL/ECO (#10326) or Philips F32T8/ADV835/ALTO (#13988-1) or Sylvania FO32/835/XPS/ECO (#21697) 32-watt, 3,500K color temperature, 3100-lumen, 85CRI, 30,000-hour rated life linear T8 fluorescent lamps. Lampholders shall be for rapid-start/program-start operation and contacts shall be the knife-edge type, shall be of the single slot entry type requiring a one quarter turn of the lamp after insertion, and shall conform to the applicable requirements of UL 542. Luminaire shall be UL/NRTL listed and labeled for application.

- ▶ Legion [see luminaire schedule on plans for catalog number]
- ▶ LSI [see luminaire schedule on plans for catalog number]
- ▶ Prudential [see luminaire schedule on plans for catalog number]
- ▶ Williams [see luminaire schedule on plans for catalog number]

[illegible]

FTG3 series

Type
Job Name
Catalog Number

P8600 Recessed

ordering

series	lamp rows	shielding	frame style/color	reflector system	circuiting	voltage	ceiling system	options
P8604	6" x 4"	1T8 2T8	PRA ^a prismatic acrylic lens	DW flush frame (steel) white or	W ^a white S ^a specular Miro [®] IV alu-minum	SC single circuit 277 DC ^a dual circuit 347 UNV ^a	X1 ^a T-bar (exposed)	AL 20G PAF CR EML ^a EMH ^a DM RSE 10THD B ₁ SC 2SC TRS MR FH 1PL ^a
P8614	1' x 4"	2T8 3T8 4T8	P19A prismatic acrylic lens, pattern 19	DB black SW flush frame (aluminum) white or			X3A ^a hard ceiling (swing arm)	
P8622	2' x 2'	2T8 2T8U6 2BX_w ^a	PWS minicube louver silver (1/2" x 1/2" x 1/2")	SB black	*standard *available on series P8614, P8622 & P8644, 2 or 1 lamp only	*120-277	X3B hard ceiling (overhead mounting brackets)	
P8624 ^a	2' x 4'	2T8 3T8 4T8 6T8	PW2S minicube louver silver (1/2" x 1/2" x 1")	RW 1/2"-deep regressed frame (aluminum) white or			X4B hard ceiling ("C" channel)	
P8633	3' x 3'	4T8 6T8	WA white acrylic diffuser	RB black			X5A T-bar (concealed)	
P8644	4' x 4'	4T8 6T8 8T8	*standard	MW regressed frame (aluminum) with black reveal			*standard *except P8604	

^asee options to specify master remote wiring

^alist, specify 50w, 100w, 50w or 55w

Note: fixture body flange finished in gloss white on mounting styles X1A, X3B & X4B

*consult factory for fixture lengths < 4' 1P-8644 only

Applications Corridors, offices, retail, healthcare, schools.

Features A premium-quality lensed troffer with 5"-deep body. This versatile fixture is available in various lamp types and can be used in most grid styles or ceiling types. A .110 prismatic acrylic lens is standard, but numerous lenses can be accommodated. It features mitered door corners, spring-loaded latches and reversible hinges. The heavy-duty doorframe is available in four styles: 1/2" regressed aluminum, flat aluminum, flat steel or floating 1/2" regressed aluminum. It can also be fitted with stainless steel flanges and doorframes.

Construction The body, available in 6" x 4", 1' x 4", 2' x 2', 2' x 4', 3' x 3' and 4' x 4', is constructed of die-formed, 22-gauge steel.

Finish The standard housing color is gloss white (YGW) in polyester powder paint. The standard doorframe color is gloss white (YGW) or matte black (YBB) as specified in ordering matrix.

Electrical T8 fixtures have instant-start electronic ballasts with less

Prudential reserves the right to change design specifications or materials without notice

than 20% THD. Fixtures are U.L. Damp labeled (non-emergency) and I.B.E.W. manufactured. Maximum ballast size available: 2.4" width x 1.5" height.

Mounting Fixture is to be recess-mounted into exposed T-bar, concealed T-bar or hard ceiling application(s).

Options AL: aluminum body; 20G: 20-gauge housing; PAF: painted after fabrication; CR: continuous-row installation; EML: emergency battery (600-700 lumens); EMH: emergency battery (1100-1400 lumens); DM: dimming - specify manufacturer, voltage, and other requirements; RSE: rapid-start electronic; 10THD: ballast with < 10% total harmonic distortion; B₁: specific ballast, specify manufacturer and catalog number (consult factory); SC: side-mounted ballast; 2SC: double side-mounted ballast; TRS: tamper-resistant screws; MR: master remote with 11' whip; FH: fixture fusing (slow blow); 1PL: one-piece lens (P8644 only).

0601

Prudential Ltd., 1737 East 22nd Street, Los Angeles, CA 90058 7/11

Recessed P8600

FTG3g

2x4 Task/Ambient Light

47W-nondim-277V

FTG3g

Recessed (ceiling substrate as detailed by Architect) mounted fluorescent luminaire shall be nominally 2 feet/0 inches in width by 4 feet/0 inches in length by about 0 feet/6 inches in overall recessed depth (see respective Vendor's current datasheets for actual dimensions) and shall be similar to Type FTG3a except for possible ceiling substrate, shall exhibit 2 lamps in cross section, shall exhibit single-level-switching of all lamps together, and shall be furnished with electrically fused, integral, metal-cased, high power factor (0.95 or greater), 0.71 ballast factor, THD $\leq 10\%$, program-start electronic fluorescent nondim ballast (GE #96720) with end-of-lamp-life protection mode suitable for operation at 277V. Luminaire shall be lamped with two [2] GE F32T8/XL/SPX35/HL/ECO (#10326) or Philips F32T8/ADV835/ALTO (#13988-1) or Sylvania FO32/835/XPS/ECO (#21697) 32-watt, 3,500K color temperature, 3100-lumen, 85CRI, 30,000-hour rated life linear T8 fluorescent lamps. Lampholders shall be for rapid-start/program-start operation and contacts shall be the knife-edge type, shall be of the single slot entry type requiring a one quarter turn of the lamp after insertion, and shall conform to the applicable requirements of UL 542. Luminaire shall be UL/NRTL listed and labeled for application.

- ▶ LSI [see luminaire schedule on plans for catalog number]
- ▶ Prudential [see luminaire schedule on plans for catalog number]
- ▶ Williams [see luminaire schedule on plans for catalog number]

2000 2001 2002 2003 2004 2005 2006 2007 2008 2009 2010 2011 2012 2013 2014 2015 2016 2017 2018 2019 2020 2021 2022 2023 2024 2025 2026 2027 2028 2029 2030 2031 2032 2033 2034 2035 2036 2037 2038 2039 2040 2041 2042 2043 2044 2045 2046 2047 2048 2049 2050 2051 2052 2053 2054 2055 2056 2057 2058 2059 2060 2061 2062 2063 2064 2065 2066 2067 2068 2069 2070 2071 2072 2073 2074 2075 2076 2077 2078 2079 2080 2081 2082 2083 2084 2085 2086 2087 2088 2089 2090 2091 2092 2093 2094 2095 2096 2097 2098 2099 2100 2101 2102 2103 2104 2105 2106 2107 2108 2109 2110 2111 2112 2113 2114 2115 2116 2117 2118 2119 2120 2121 2122 2123 2124 2125 2126 2127 2128 2129 2130 2131 2132 2133 2134 2135 2136 2137 2138 2139 2140 2141 2142 2143 2144 2145 2146 2147 2148 2149 2150 2151 2152 2153 2154 2155 2156 2157 2158 2159 2160 2161 2162 2163 2164 2165 2166 2167 2168 2169 2170 2171 2172 2173 2174 2175 2176 2177 2178 2179 2180 2181 2182 2183 2184 2185 2186 2187 2188 2189 2190 2191 2192 2193 2194 2195 2196 2197 2198 2199 2200 2201 2202 2203 2204 2205 2206 2207 2208 2209 2210 2211 2212 2213 2214 2215 2216 2217 2218 2219 2220 2221 2222 2223 2224 2225 2226 2227 2228 2229 2230 2231 2232 2233 2234 2235 2236 2237 2238 2239 2240 2241 2242 2243 2244 2245 2246 2247 2248 2249 2250 2251 2252 2253 2254 2255 2256 2257 2258 2259 2260 2261 2262 2263 2264 2265 2266 2267 2268 2269 2270 2271 2272 2273 2274 2275 2276 2277 2278 2279 2280 2281 2282 2283 2284 2285 2286 2287 2288 2289 2290 2291 2292 2293 2294 2295 2296 2297 2298 2299 2300 2301 2302 2303 2304 2305 2306 2307 2308 2309 2310 2311 2312 2313 2314 2315 2316 2317 2318 2319 2320 2321 2322 2323 2324 2325 2326 2327 2328 2329 2330 2331 2332 2333 2334 2335 2336 2337 2338 2339 2340 2341 2342 2343 2344 2345 2346 2347 2348 2349 2350 2351 2352 2353 2354 2355 2356 2357 2358 2359 2360 2361 2362 2363 2364 2365 2366 2367 2368 2369 2370 2371 2372 2373 2374 2375 2376 2377 2378 2379 2380 2381 2382 2383 2384 2385 2386 2387 2388 2389 2390 2391 2392 2393 2394 2395 2396 2397 2398 2399 2400 2401 2402 2403 2404 2405 2406 2407 2408 2409 2410 2411 2412 2413 2414 2415 2416 2417 2418 2419 2420 2421 2422 2423 2424 2425 2426 2427 2428 2429 2430 2431 2432 2433 2434 2435 2436 2437 2438 2439 2440 2441 2442 2443 2444 2445 2446 2447 2448 2449 2450 2451 2452 2453 2454 2455 2456 2457 2458 2459 2460 2461 2462 2463 2464 2465 2466 2467 2468 2469 2470 2471 2472 2473 2474 2475 2476 2477 2478 2479 2480 2481 2482 2483 2484 2485 2486 2487 2488 2489 2490 2491 2492 2493 2494 2495 2496 2497 2498 2499 2500 2501 2502 2503 2504 2505 2506 2507 2508 2509 2510 2511 2512 2513 2514 2515 2516 2517 2518 2519 2520 2521 2522 2523 2524 2525 2526 2527 2528 2529 2530 2531 2532 2533 2534 2535 2536 2537 2538 2539 2540 2541 2542 2543 2544 2545 2546 2547 2548 2549 2550 2551 2552 2553 2554 2555 2556 2557 2558 2559 2560 2561 2562 2563 2564 2565 2566 2567 2568 2569 2570 2571 2572 2573 2574 2575 2576 2577 2578 2579 2580 2581 2582 2583 2584 2585 2586 2587 2588 2589 2590 2591 2592 2593 2594 2595 2596 2597 2598 2599 2600 2601 2602 2603 2604 2605 2606 2607 2608 2609 2610 2611 2612 2613 2614 2615 2616 2617 2618 2619 2620 2621 2622 2623 2624 2625 2626 2627 2628 2629 2630 2631 2632 2633 2634 2635 2636 2637 2638 2639 2640 2641 2642 2643 2644 2645 2646 2647 2648 2649 2650 2651 2652 2653 2654 2655 2656 2657 2658 2659 2660 2661 2662 2663 2664 2665 2666 2667 2668 2669 2670 2671 2672 2673 2674 2675 2676 2677 2678 2679 2680 2681 2682 2683 2684 2685 2686 2687 2688 2689 2690 2691 2692 2693 2694 2695 2696 2697 2698 2699 2700 2701 2702 2703 2704 2705 2706 2707 2708 2709 2710 2711 2712 2713 2714 2715 2716 2717 2718 2719 2720 2721 2722 2723 2724 2725 2726 2727 2728 2729 2730 2731 2732 2733 2734 2735 2736 2737 2738 2739 2740 2741 2742 2743 2744 2745 2746 2747 2748 2749 2750 2751 2752 2753 2754 2755 2756 2757 2758 2759 2760 2761 2762 2763 2764 2765 2766 2767 2768 2769 2770 2771 2772 2773 2774 2775 2776 2777 2778 2779 2780 2781 2782 2783 2784 2785 2786 2787 2788 2789 2790 2791 2792 2793 2794 2795 2796 2797 2798 2799 2800 2801 2802 2803 2804 2805 2806 2807 2808 2809 2810 2811 2812 2813 2814 2815 2816 2817 2

FTG3h

2x4 Task/Ambient Light

58W-nondim-277V

FTG3h

Recessed (ceiling substrate as detailed by Architect) mounted fluorescent luminaire shall be nominally 2 feet/0 inches in width by 4 feet/0 inches in length by about 0 feet/6 inches in overall recessed depth (see respective Vendor's current datasheets for actual dimensions) and shall be similar to Type FTG3a except for possible ceiling substrate, shall exhibit 2 lamps in cross section, shall exhibit single-level-switching of all lamps together, and shall be furnished with electrically fused, integral, metal-cased, high power factor (0.96 or greater), 0.89 ballast factor, THD $\leq 10\%$, program-start electronic fluorescent nondim ballast (GE #96714) with end-of-lamp-life protection mode suitable for operation at 277V. Luminaire shall be lamped with two [2] GE F32T8/XL/SPX35/HL/ECO (#10326) or Philips F32T8/ADV835/ALTO (#13988-1) or Sylvania FO32/835/XPS/ECO (#21697) 32-watt, 3,500K color temperature, 3100-lumen, 85CRI, 30,000-hour rated life linear T8 fluorescent lamps. Lampholders shall be for rapid-start/program-start operation and contacts shall be the knife-edge type, shall be of the single slot entry type requiring a one quarter turn of the lamp after insertion, and shall conform to the applicable requirements of UL 542. Luminaire shall be UL/NRTL listed and labeled for application.

- ▶ LSI [see luminaire schedule on plans for catalog number]
- ▶ Prudential [see luminaire schedule on plans for catalog number]
- ▶ Williams [see luminaire schedule on plans for catalog number]

[illegible]