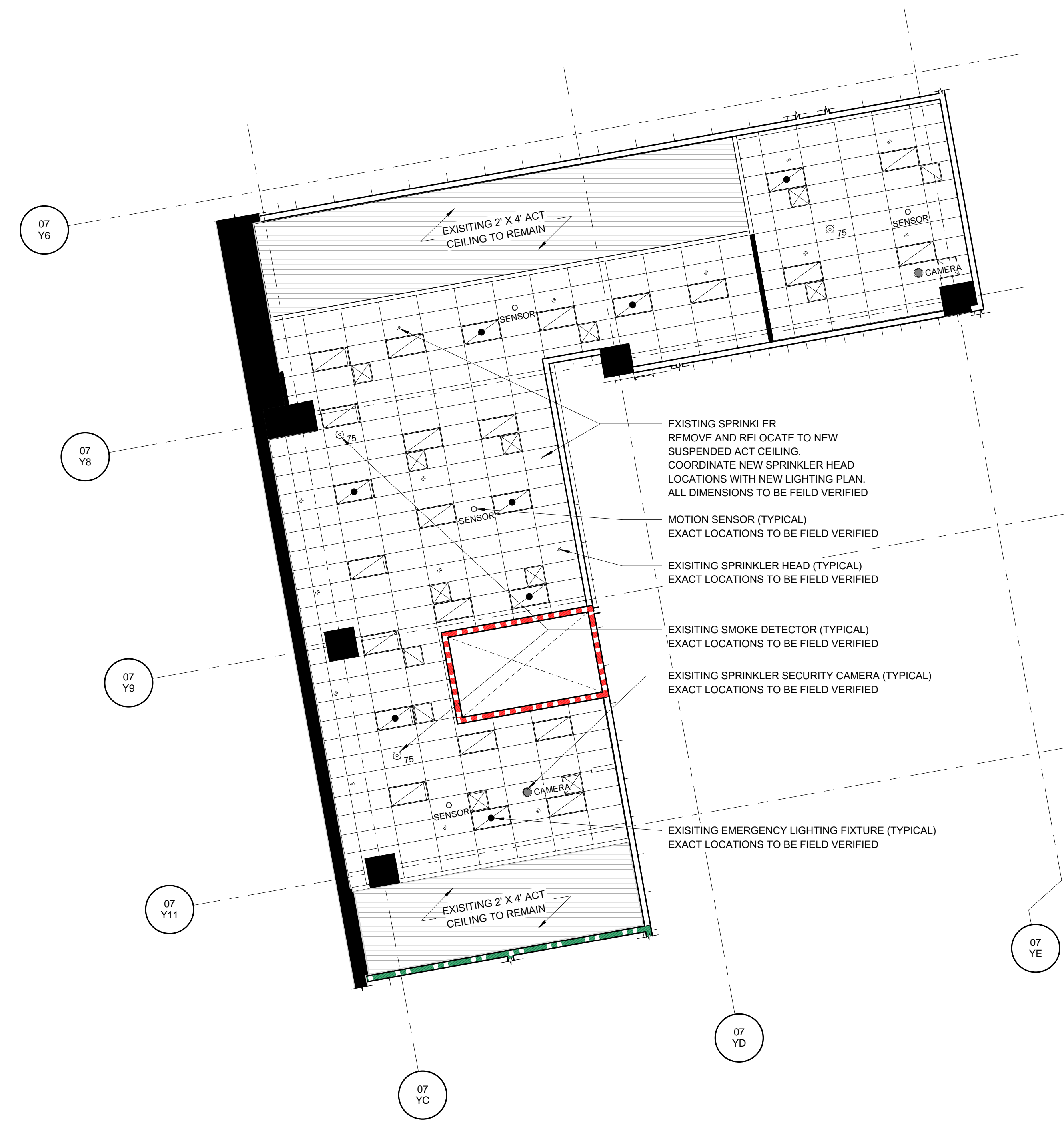
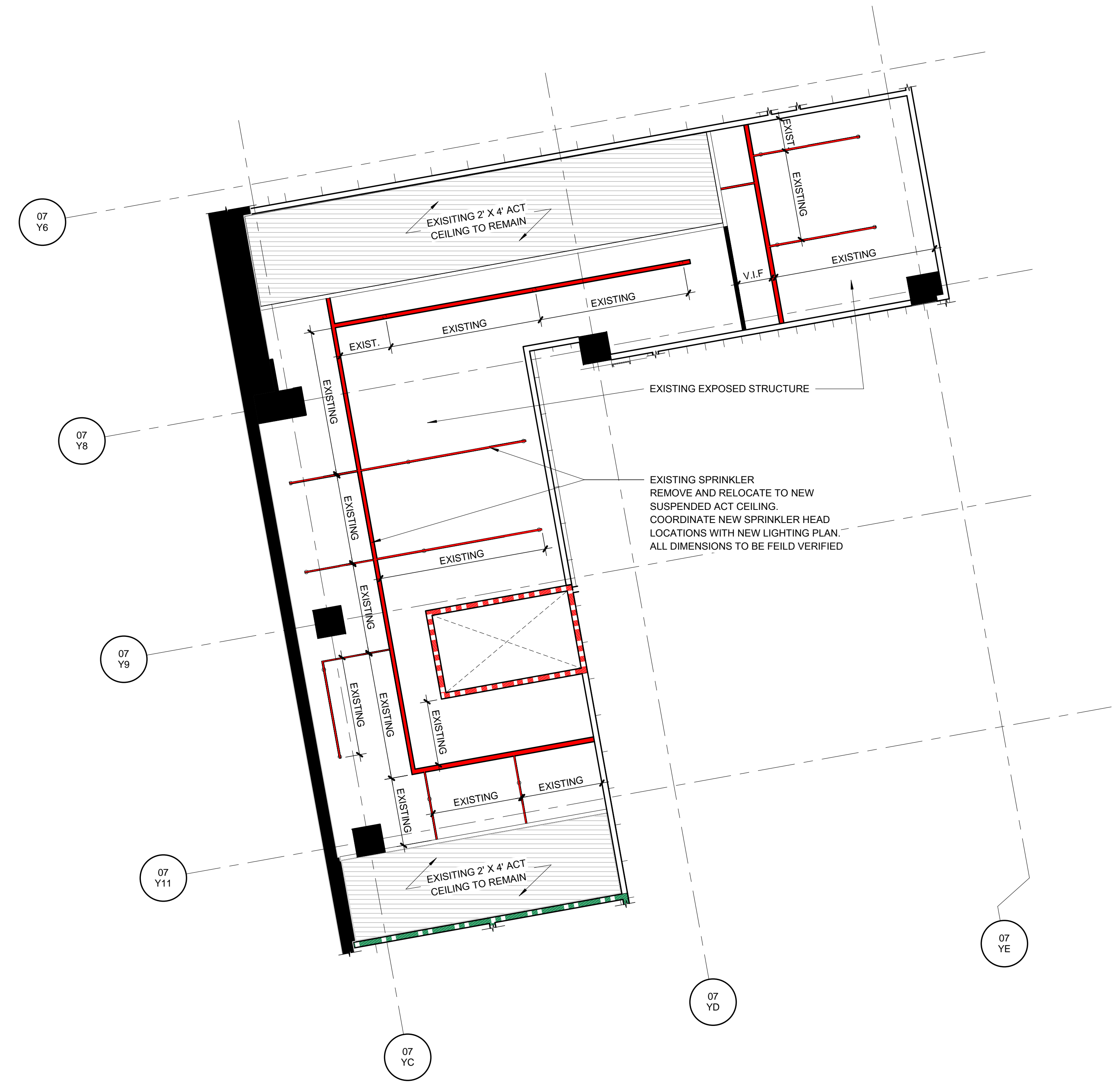


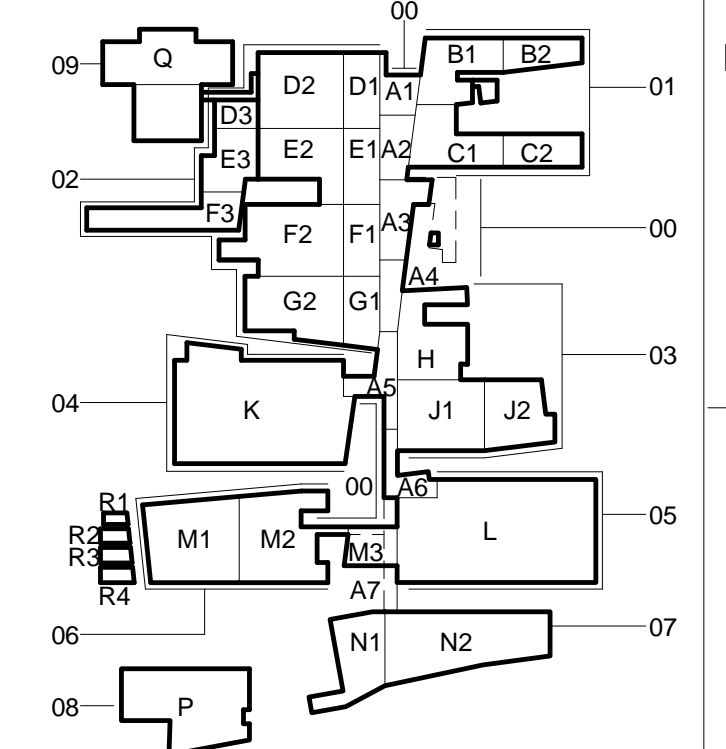
ONE INCH = FORTY FEET (1" = 40')  
0' 15' 30'  
6"  
THREE INCHES = ONE FOOT  
6"  
ONE AND ONE HALF INCHES = ONE FOOT  
6"  
THREE QUARTERS INCH = ONE FOOT  
6"  
ONE HALF INCH = ONE FOOT  
6"  
ONE QUARTER INCH = ONE FOOT  
6"  
ONE EIGHT INCH = ONE FOOT  
6"  
ONE SIXTEENTH INCH = ONE FOOT  
6"



1 RM.4N107 RCP REVISION - LIFE SAFETY  
SCALE: 1/8" = 1'-0"



2 RM.4N107 RCP REVISION - FIRE PROTECTION  
SCALE: 1/8" = 1'-0"



CONSULTANTS:		ARCHITECT/ENGINEERS:		DRAWING TITLE CEP ROOM 4N107 CEILING PROJECT- LIFE SAFETY AND FIRE PROTECTION		PROJECT TITLE SLVHCS REPLACEMENT MEDICAL CENTER PROJECT		PROJECT NUMBER 629-18-XXXX		BUILDING NUMBER		OFFICE OF CONSTRUCTION AND FACILITIES MANAGEMENT Department of Veterans Affairs	
REVISIONS:				APPROVED: PROJECT DIRECTOR		LOCATION NEW ORLEANS, LOUISIANA		DOCUMENT SET PACKAGE		DRAWING NUMBER			
DATE						DATE 09/21/17		CHECKED FEMI		DRAWN FEMI			