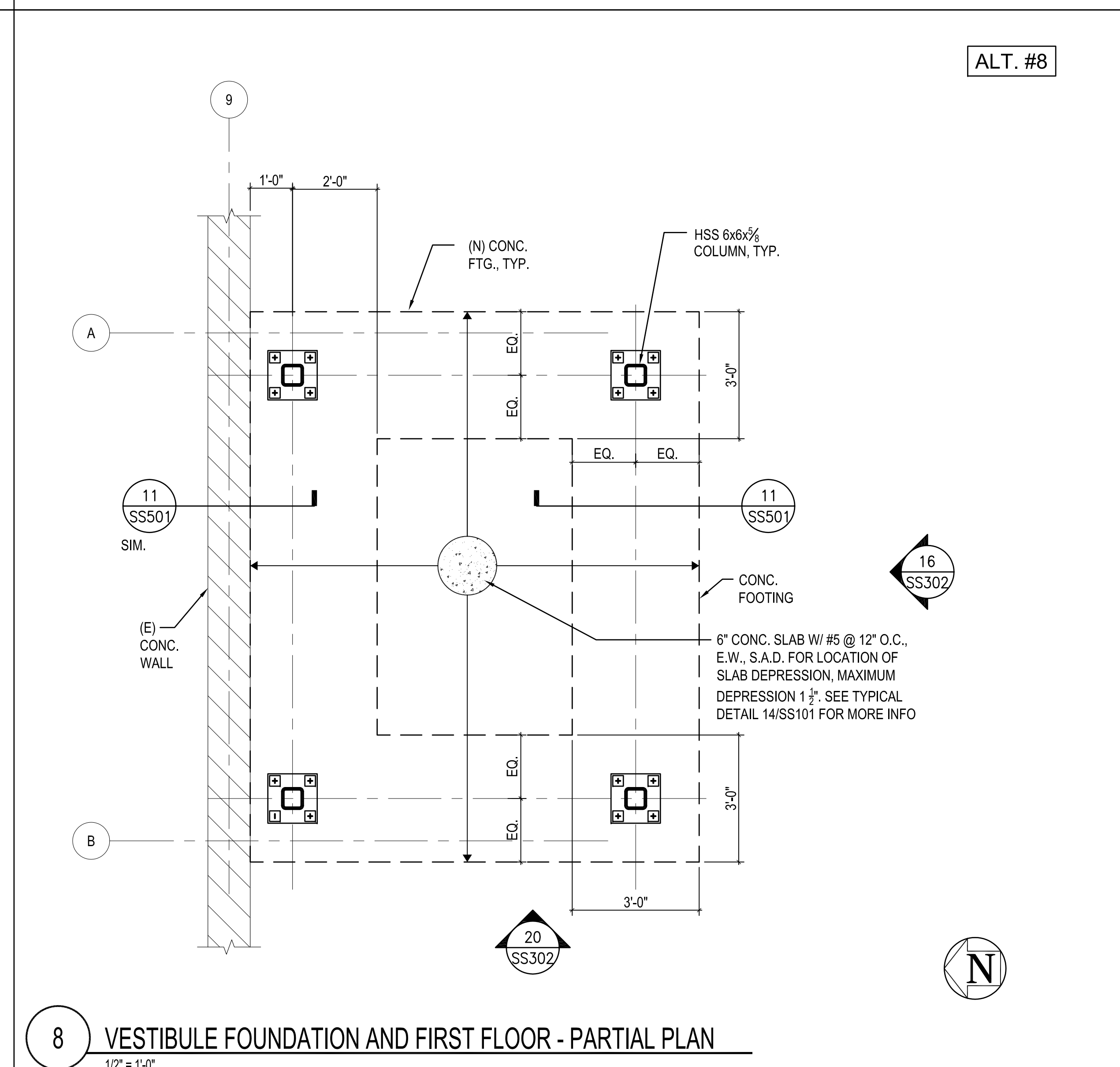
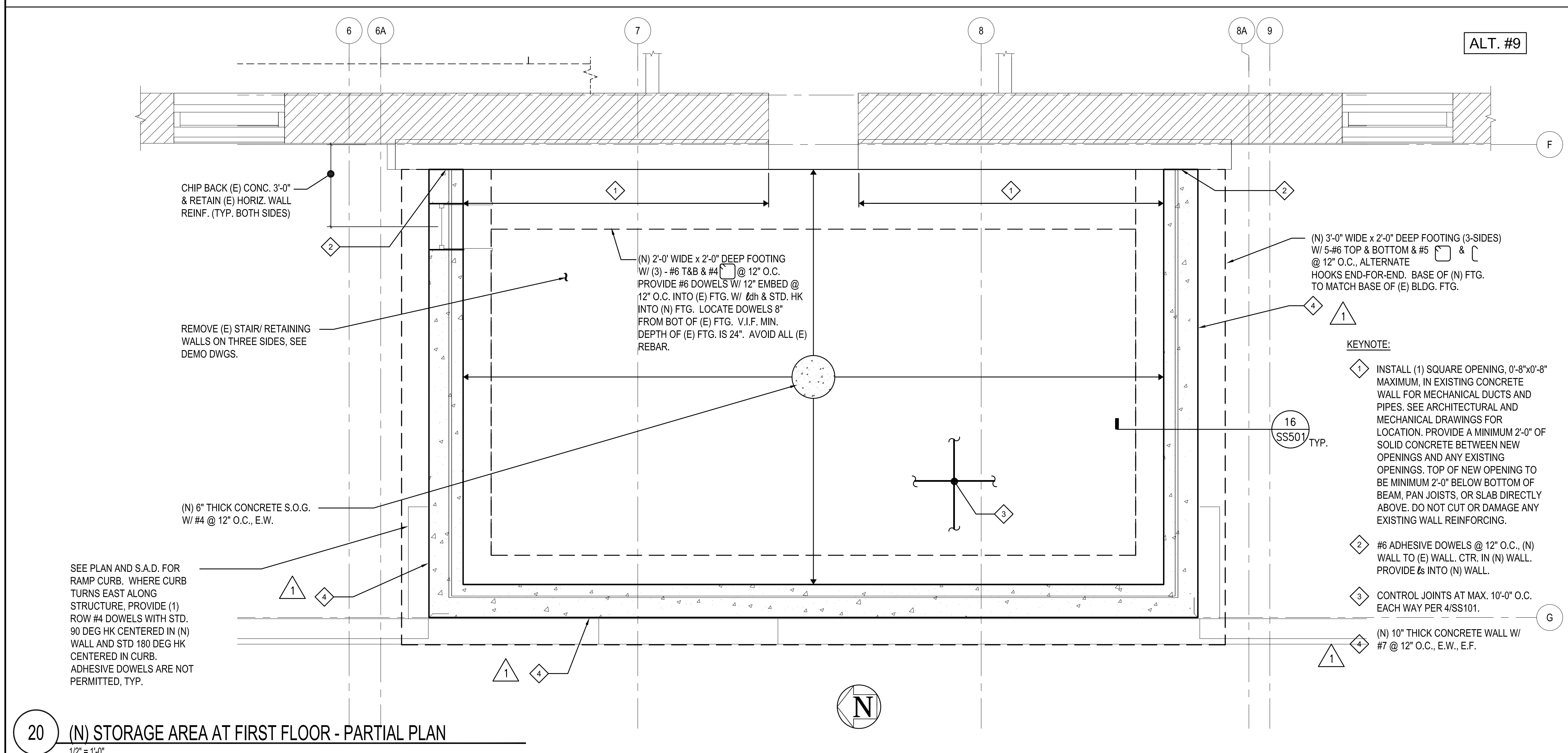
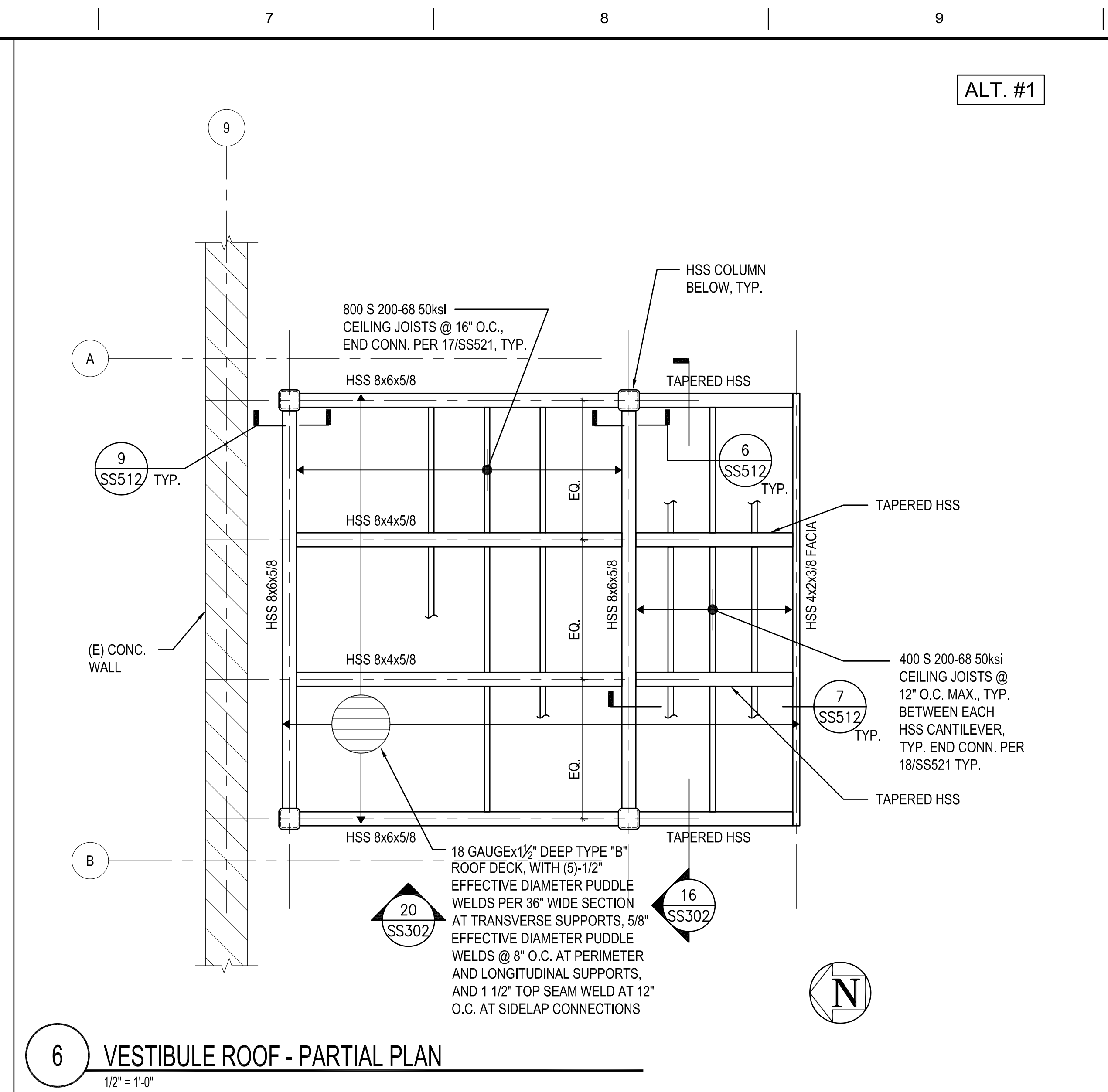
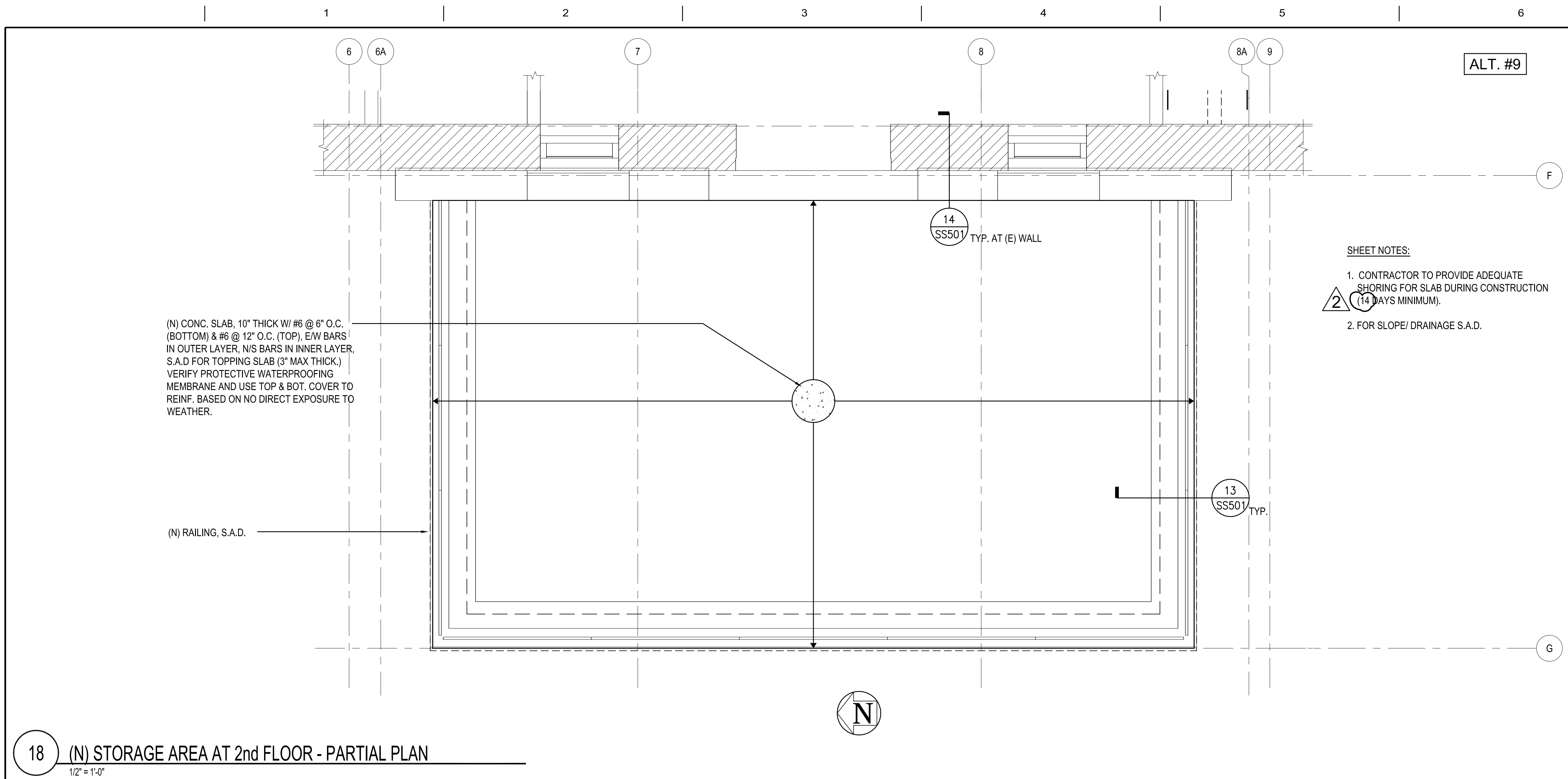


three inches = one foot
one and one half inch = one foot
one inch = one foot
three quarters inch = one foot
one half inch = one foot
three eighths inch = one foot
one quarter inch = one foot
one eighth inch = one foot



AMENDMENT # 1 AMENDMENT # 2	6/22/2012 7/9/2012	Consultants Degenkolb DEGENKOLB ENGINEERS 235 Montgomery Street, Suite 500 San Francisco, CA 94104 415.392.6952 Phone 415.381.3157 Fax www.degenkolb.com B0584008.00	Reviewing Agency - Fire Protection AON Aon Risk Solutions Global Risk Consulting Fire Protection Engineering 11715 Wilshire Boulevard, Suite 150 Los Angeles, CA 90025 1-800-671-3545 1-800-671-3546 aonfire.com Project 2010114 Fire Protection Code Risk Life Safety Security Consulting	Architects/Engineers RBB ARCHITECTS INC 10980 Wilshire Boulevard Los Angeles, California 90024-3905 Telephone 310 473 3555 Facsimile 310 473 3555 www.rbbinc.com 917 7th St. 2nd Floor Ste. 3 Sacramento, California 95814 Telephone 310 473 3555 Facsimile 310 473 3555 www.rbbinc.com	Drawing Title PARTIAL PLANS Scale AS NOTED Approved Project Director	Project Title VA SIERRA NEVADA HEALTHCARE SYSTEM BLDG 1A SEISMIC CORRECTIONS Project No. RBB #1013700 Location 975 KIRMAN AVE., RENO, NEVADA 89502 Date 06/08/2012 Checked WG Drawn MM	VA Project No. 654-336 Building No. 1A Drawing No. SS403	Office of Construction and Facilities Management
--------------------------------	-----------------------	---	--	---	---	--	--	---